

New Hampshire Broadband Mapping and Planning Program

March, 2011

Data Verification: Project Speed Tests

Map Key

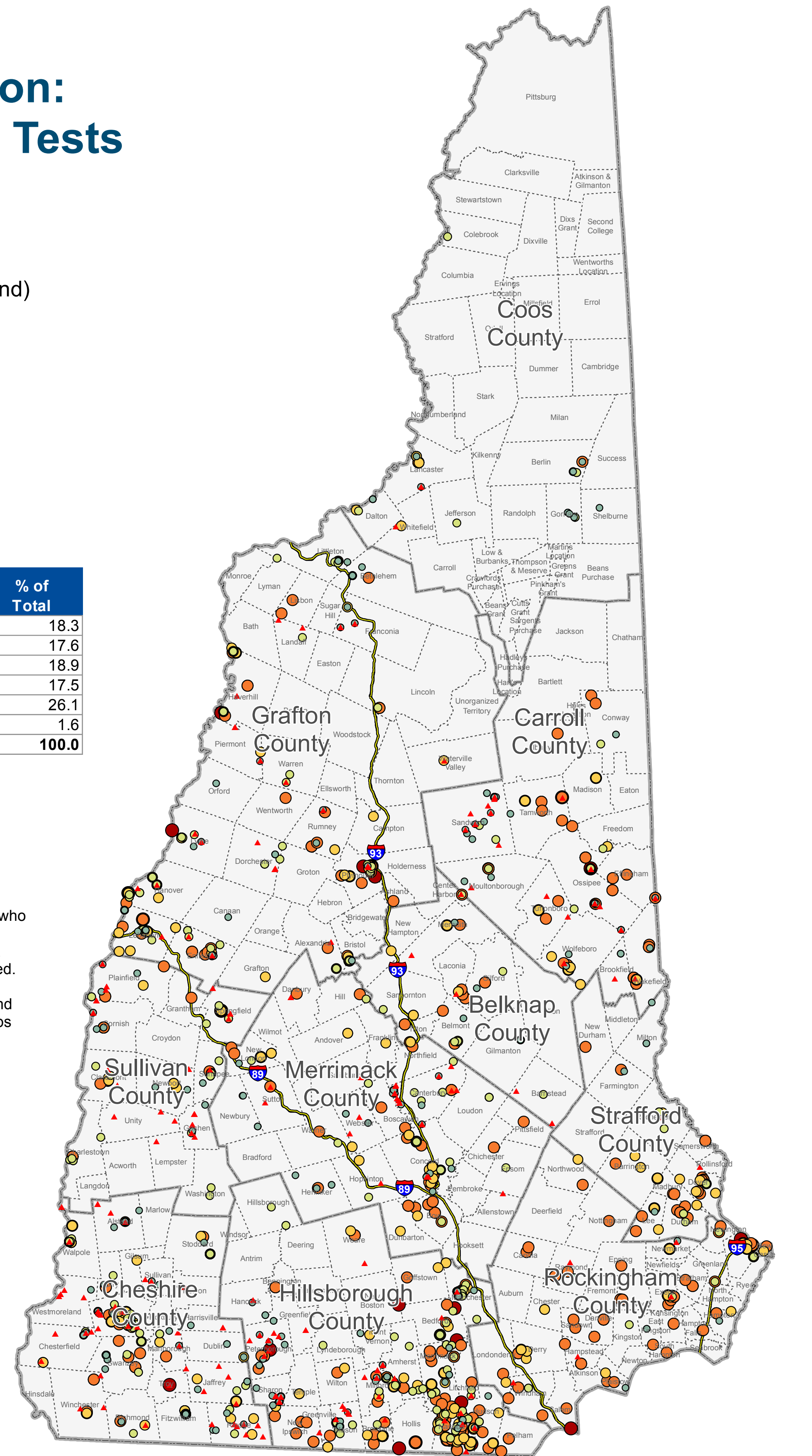
- Download Speed
- ▲ < 768 kbps (no broadband)
 - 768 kbps - 1.5 mbps
 - 1.5 - 3 mbps
 - 3 - 6 mbps
 - 6 - 10 mbps
 - >= 10 mbps

Summary Statistics

Download Speed	Number of Tests	% of Total
< 768 kbps	313	18.3
768 kbps - 1.5 mbps	302	17.6
1.5 - 3 mbps	323	18.9
3 - 6 mbps	299	17.5
6 - 10 mbps	447	26.1
> 10 mbps	28	1.6
Total	1,712	100.0

This map displays the distribution of users who took the NHBMP speed test prior to 3/31/2011. Only the 1,712 speed tests that geocoded at the address level are presented.

For the purposes of this program, broadband is defined as access that is at least 768 kbps downstream and 200 kbps upstream.



Data Verification: Distribution of Surveys

Map Key

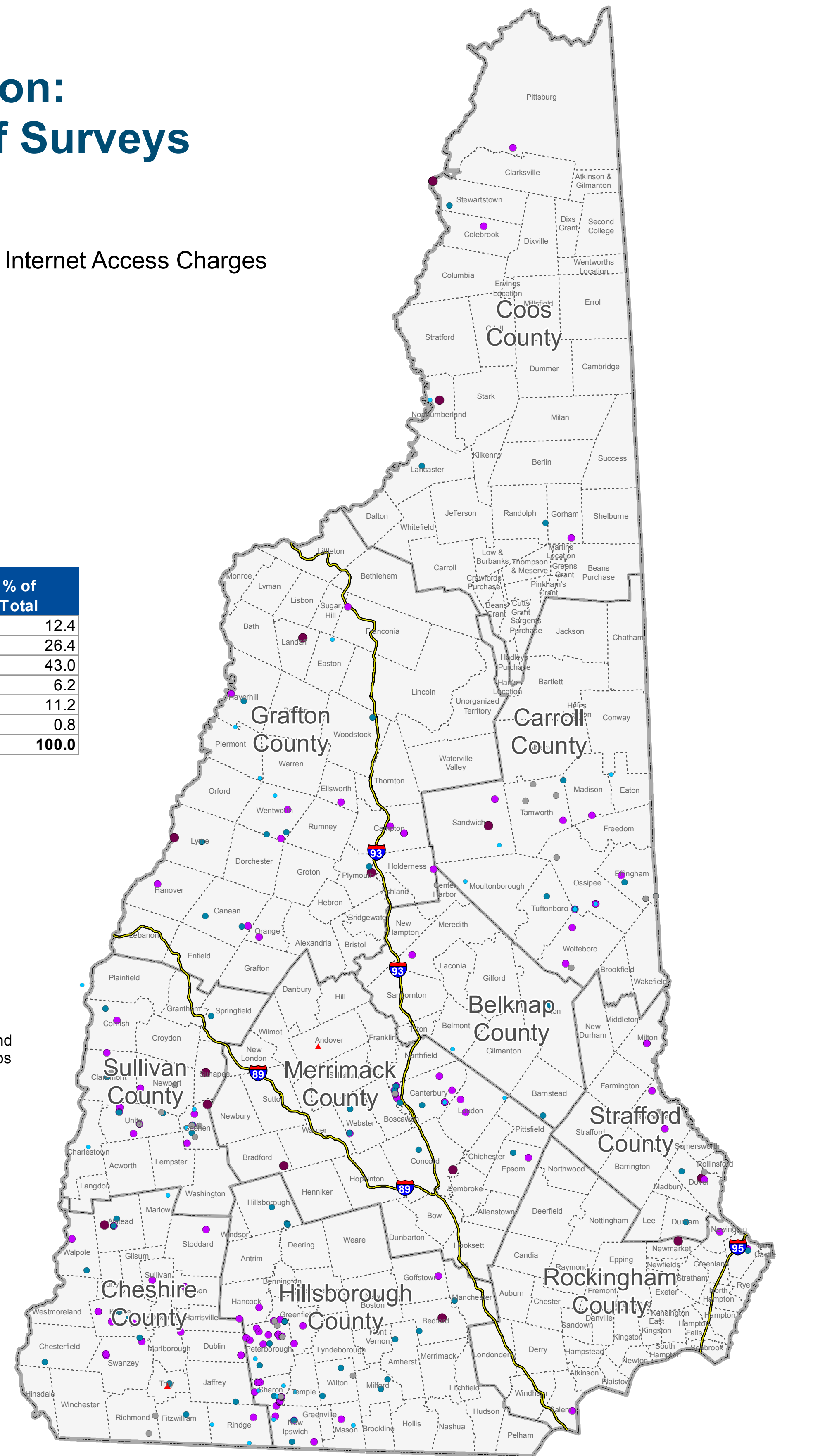
- Survey Locations - Monthly Internet Access Charges
- Less than \$19.99
 - \$20.00 - \$49.99
 - \$50.00 - \$99.99
 - \$100.00 or more
 - ▲ No Internet Access
 - Don't Know

Summary Statistics

Monthly Charge	Number of Surveys	% of Total
Less than \$19.99	30	12.4
\$20.00 - \$49.99	64	26.4
\$50.00 - \$99.99	104	43.0
\$100 or More	15	6.2
Don't Know	27	11.2
No Internet Access	2	0.8
Total	242	100.0

This map displays broadband access information provided to the NH Broadband Mapping & Planning Program (NHBMP) as of March 31, 2011. Data was submitted via an online survey on the NHBMP website.

For the purposes of this program, broadband is defined as access that is at least 768 kbps downstream and 200 kbps upstream.



Community Anchor Institutions: Survey of Satellite BB Dishes (Selected Rural Areas)

Map Key

- Location of Broadband Satellite Dish
- Town Surveyed

This map displays the locations of the 659 broadband satellite dishes mapped based on data collected via windshield surveys of selected rural areas in NH. Data was collected in the fall/winter of 2010 and is being used to assist in the verification of coverage area information submitted by broadband providers.

For the purposes of this program, broadband is defined as access that is at least 768 kbps downstream and 200 kbps upstream.

