

New Hampshire Broadband Mapping and Planning Program

March, 2011

Broadband Availability: Wireline Service

Map Key

Wireline Services

- Optical Carrier/Fiber to the End User
- Other Copper
- DSL
- Cable

Areas Partially or Not Served

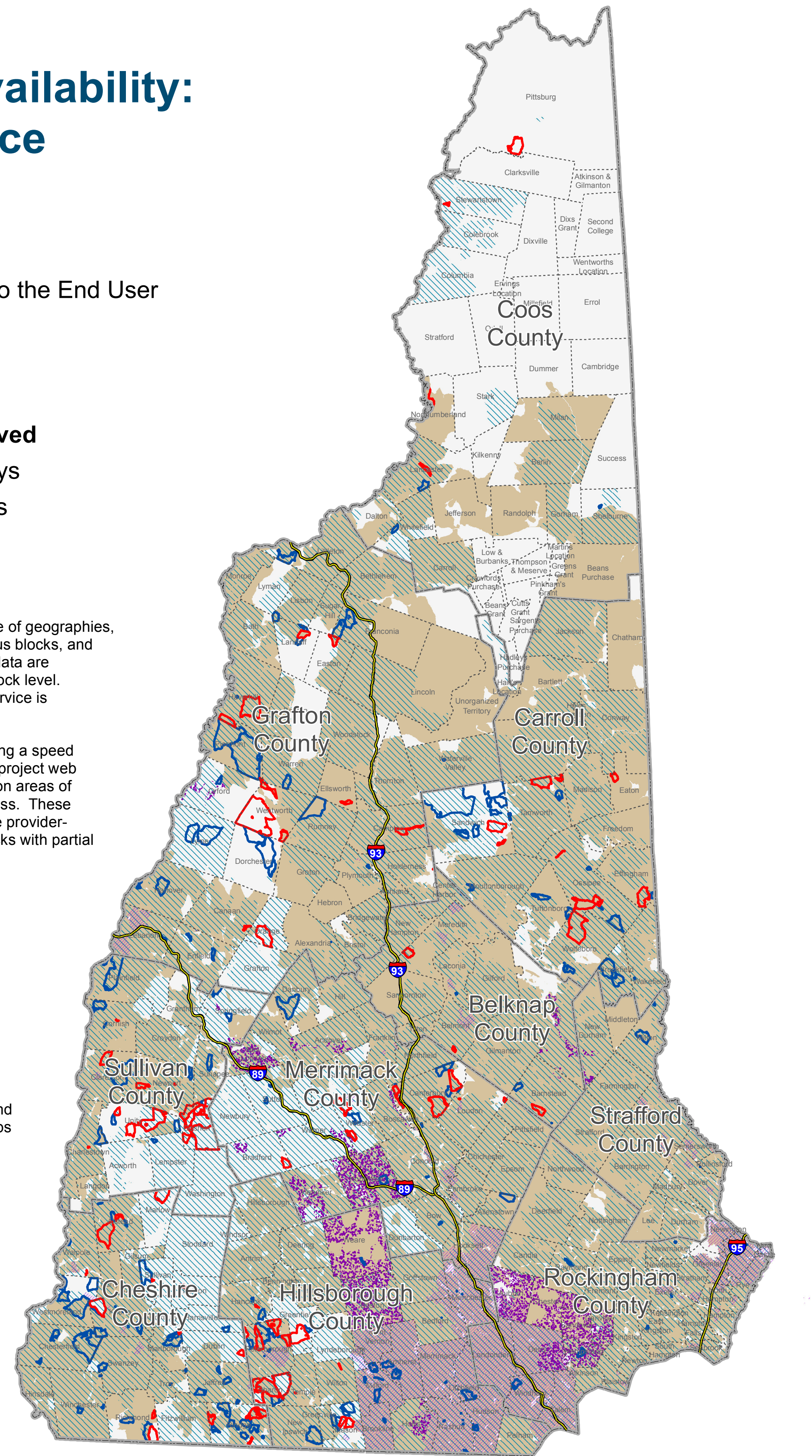
- Based on User Surveys
- Based on Speed Tests

Service providers submitted data in a range of geographies, including addresses, road segments, census blocks, and census tracts. For mapping purposes, all data are aggregated and displayed at the census block level. A census block is mapped as "served" if service is delivered to any part of the block.

Various sources of verification data, including a speed test and a consumer survey hosted on the project web site, have delivered additional information on areas of the state with limited or no broadband access. These data points are used in conjunction with the provider-reported information to identify census blocks with partial coverage.

This map displays broadband access information provided to the NH Broadband Mapping & Planning Program (NHBMP) as of March 31, 2011.

For the purposes of this program, broadband is defined as access that is at least 768 kbps downstream and 200 kbps upstream.



Broadband Availability: Fixed-Wireless Service

Map Key

Service Areas

- Fixed-Wireless Service Areas

Areas Partially or Not Served

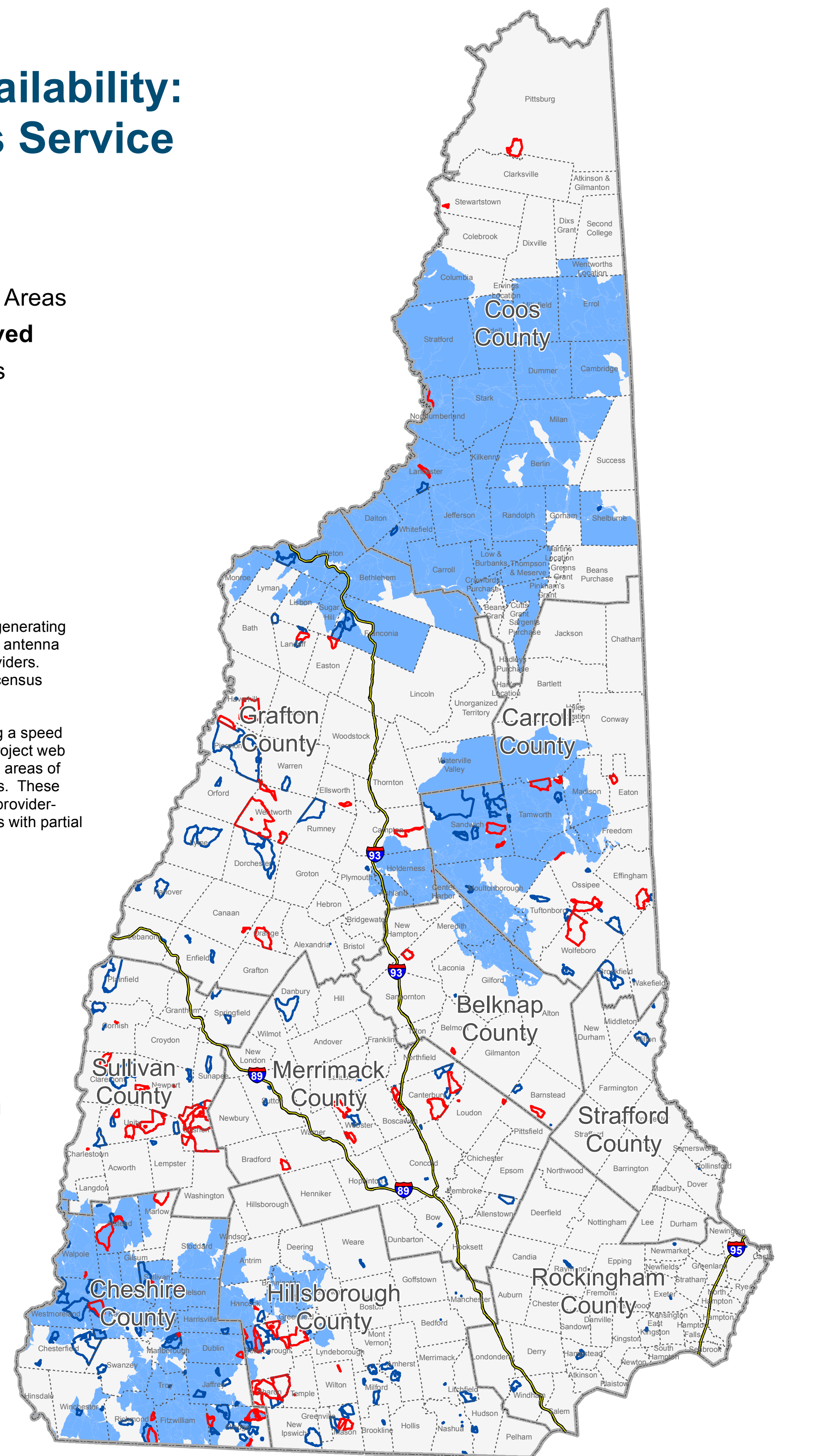
- Based on User Surveys
- Based on Speed Tests

Fixed-wireless coverage was developed by generating a signal propagation model from the detailed antenna and tower data submitted by the service providers. These models were then aggregated to the census block level to illustrate the coverage area.

Various sources of verification data, including a speed test and a consumer survey hosted on the project web site, have delivered additional information on areas of the state with limited or no broadband access. These data points are used in conjunction with the provider-reported information to identify census blocks with partial coverage.

This map displays broadband access information provided to the NH Broadband Mapping & Planning Program (NHBMP) as of March 31, 2011.

For the purposes of this program, broadband is defined as access that is at least 768 kbps downstream and 200 kbps upstream.



Broadband Availability: Mobile Wireless (Cellular) Service

Map Key

Service Areas

- Mobile Wireless Service Area

Areas Partially or Not Served

- Based on User Surveys
- Based on Speed Tests

Mobile wireless information was submitted by the service providers as GIS-formatted shapefiles. These areas were then aggregated to the census block level to illustrate the coverage area.

Various sources of verification data, including a speed test and a consumer survey hosted on the project web site, have delivered additional information on areas of the state with limited or no broadband access. These data points are used in conjunction with the provider-reported information to identify census blocks with partial coverage.

This map displays broadband access information provided to the NH Broadband Mapping & Planning Program (NHBMP) as of March 31, 2011.

For the purposes of this program, broadband is defined as access that is at least 768 kbps downstream and 200 kbps upstream.

