

CS:

MATERIALS, CONSTRUCTION AND WORKMANSHIP SHALL BE IN ACCORDANCE WITH THE UTAH DEPARTMENT OF TRANSPORTATION STANDARD SPECIFICATIONS FOR ROAD AND BRIDGE CONSTRUCTION, 1992 EDITION, AND SUPPLIMENTS THERETO WHICH ARE IN EFFECT AT THE DATE OF REQUEST FOR BIDS.

ALL REINFORCING SHALL BE DEFORMED BILLET STEEL BARS CONFORMING TO AASHTO DESIGNATION M 31 (ASTM A 615) GRADE 60 AND SHALL BE EPOXY COATED.

EXPOSED CONCRETE CORNERS SHALL BE CHAMFERED $\frac{3}{4}$ " EXCEPT WHERE NOTED OTHERWISE.

COVER TO REINFORCING STEEL SHALL BE 2" EXCEPT WHERE NOTED OTHERWISE.

ALL CAST-IN-PLACE CONCRETE SHALL BE CLASS AA(AE).

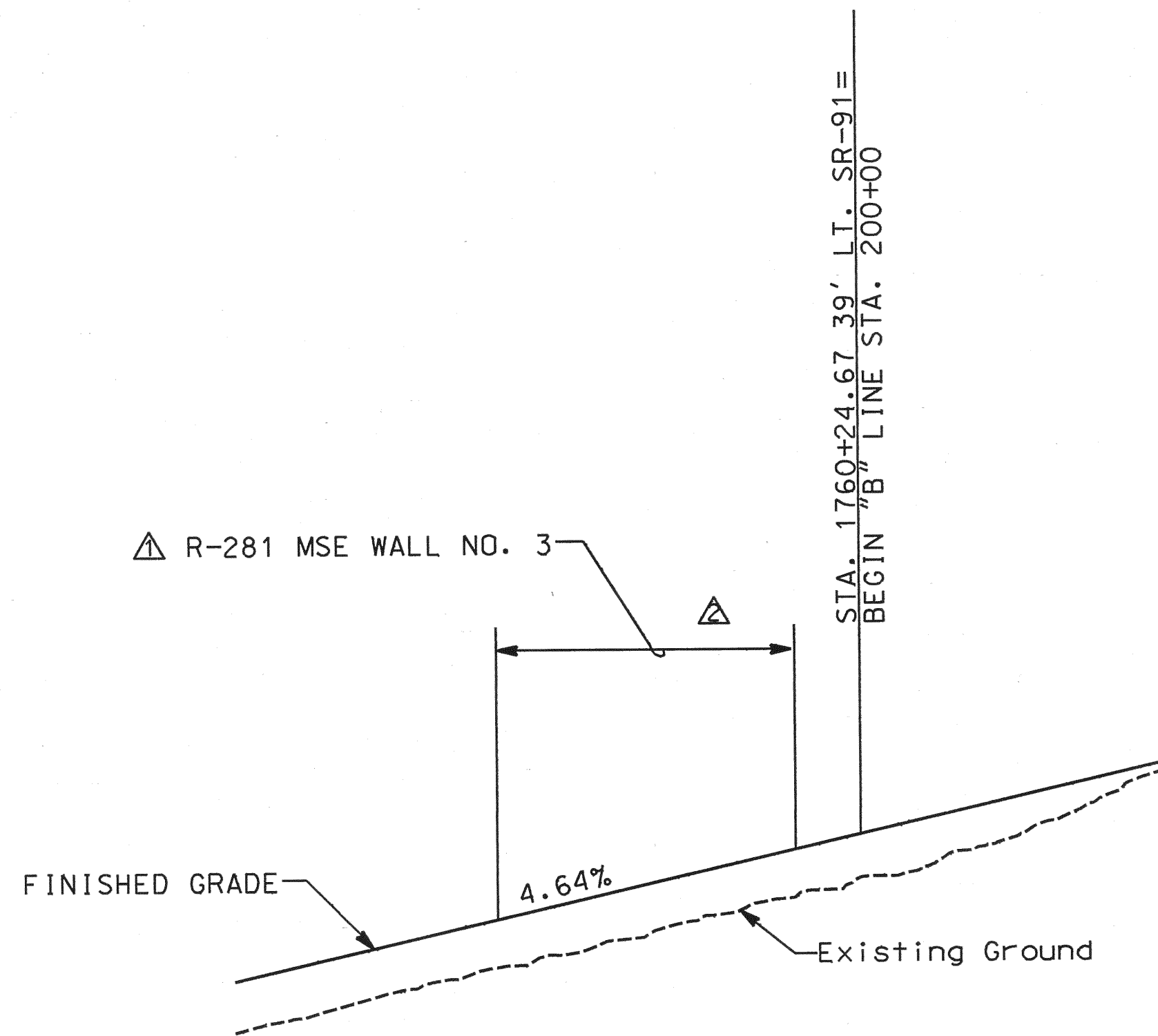
LIVE LOAD SHALL BE HS-20-44 OR INTERSTATE ALTERNATE LOADING IN ACCORDANCE WITH AASHTO SPECIFICATIONS OF 1989 AND INTERIM SPECIFICATIONS.

SEE DETAIL No. 27 FOR PLACEMENT OF CONCRETE BARRIER & CONCRETE BARRIER RESTRAINING SECTION.

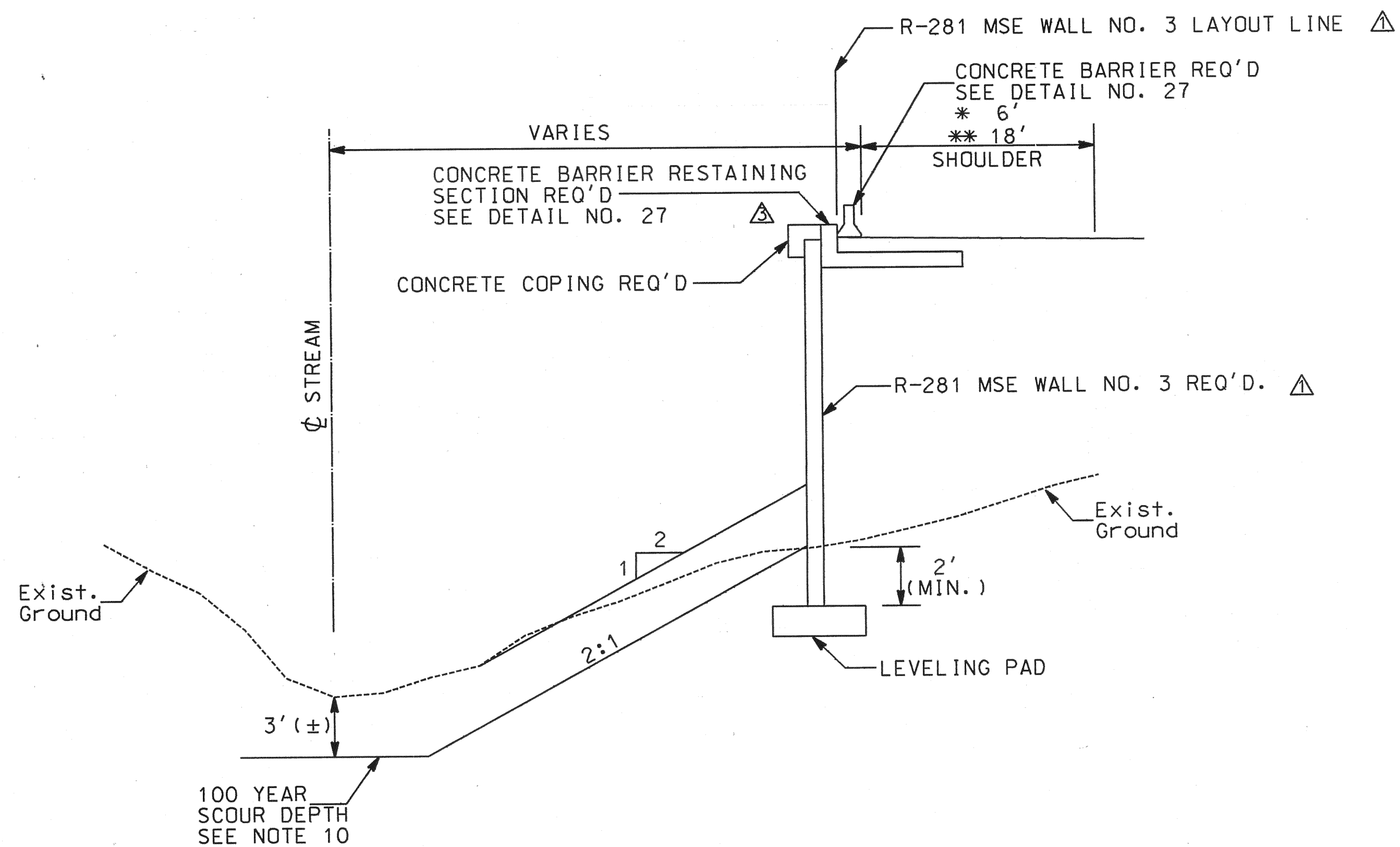
COVER OVER LEVELING PAD SHALL BE A MINIMUM OF 2 FEET.

SEE REINFORCED EARTH AND VSL DRAWINGS FOR LOCATION OF LEVELING PAD.

TOP OF LEVELING PAD MUST BE BELOW 100 YEAR SCOUR DEPTH BETWEEN STA. 1758+83 AND STA. 1760+00.



PROFILE LINE SR-91



△ TYPICAL R-281 MSE WALL NO. 3 SECTION

* FROM STA. 1758+25 TO 1760+24.67
 ** FROM STA. 200+00 TO 200+50 "B" LINE

QUANTITIES

△ DESCRIPTION 1992 STD. SPECIFICATIONS			
Structure R-281	ESTIMATED	UNIT	AS CONST.
△ R-281 MSE WALL NO. 3 (EST. QTY. 7,600 SQUARE FEET)	1	LUMP	
LEVELING PAD	200	L.F.	
CONCRETE COPING	300	L.F.	
SELECT MATERIAL	6,300	CU. YD.	

NOTE: QUANTITIES ARE FOR INFORMATION ONLY AND NOT TO BE USED FOR MEASURE OF PAYMENT.