

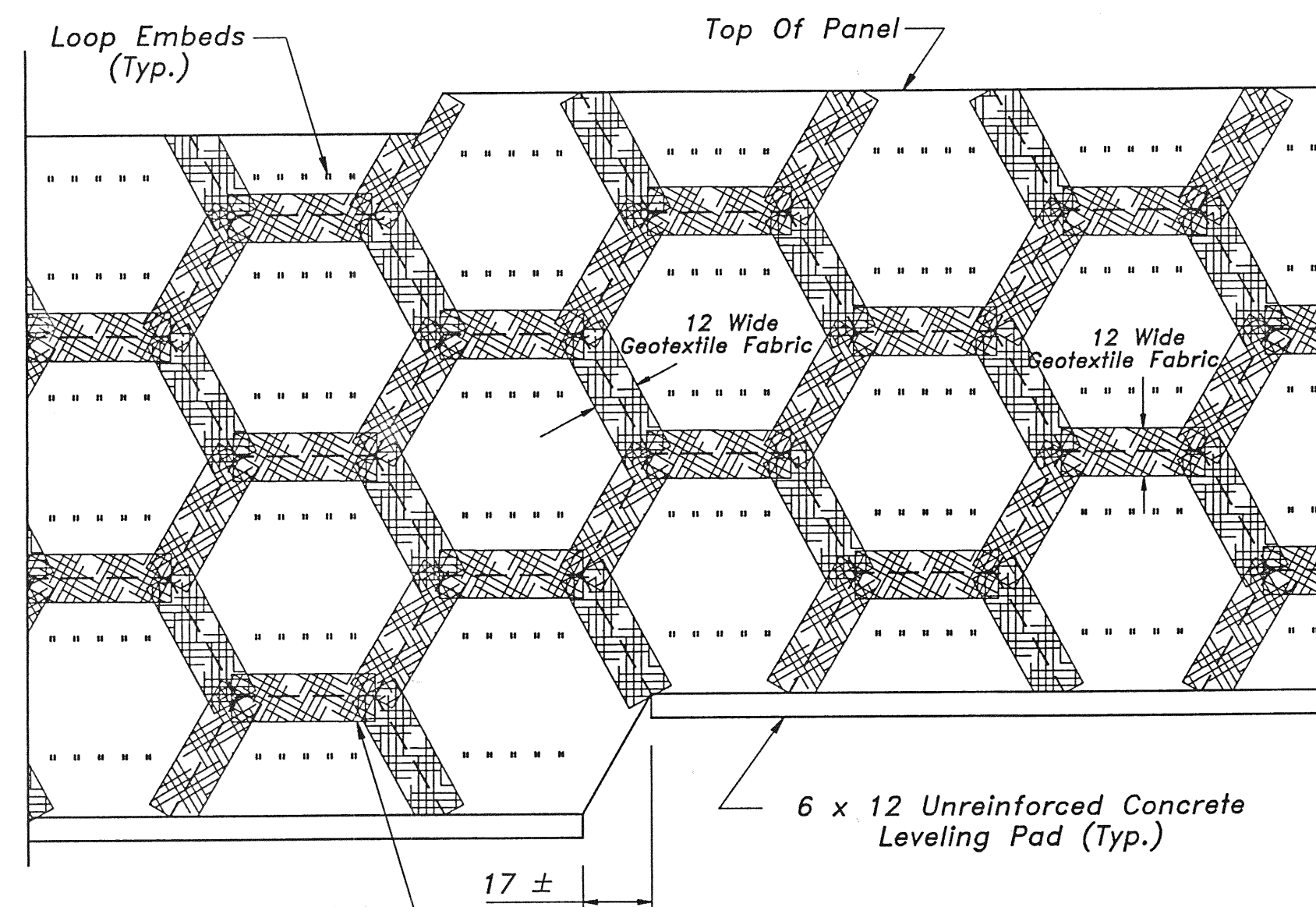
STANDARD "5A" PANEL

Back Face View

NOTE :

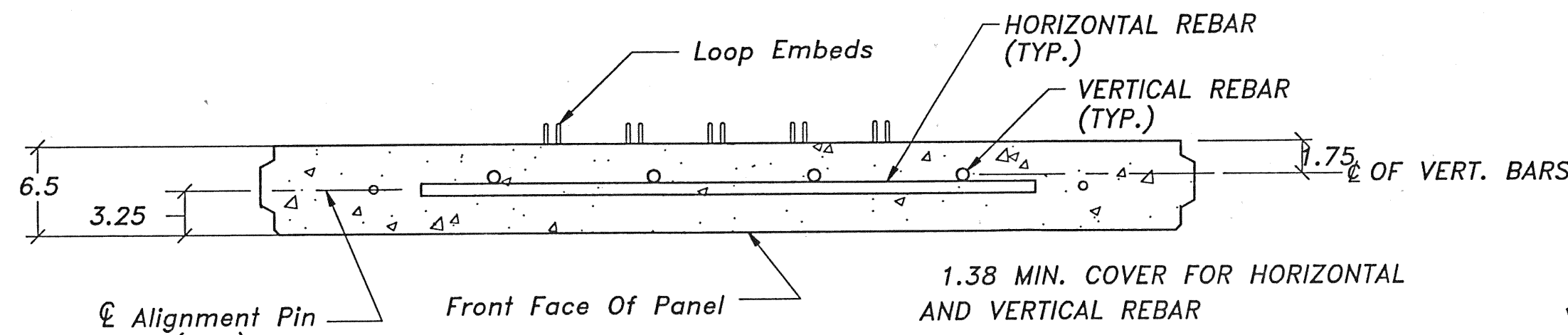
Minimum Panel Reinforcement Is 4 Loop Embeds Per Row. The Number Of Loop Embeds Per Row May Increase As Required By The Design Condition. These Panels Will Be Designated By The Number Of Loop Embeds Per Row Preceding The Panel Type.

Indicates 5A Loop Embeds Per Row Panel Type

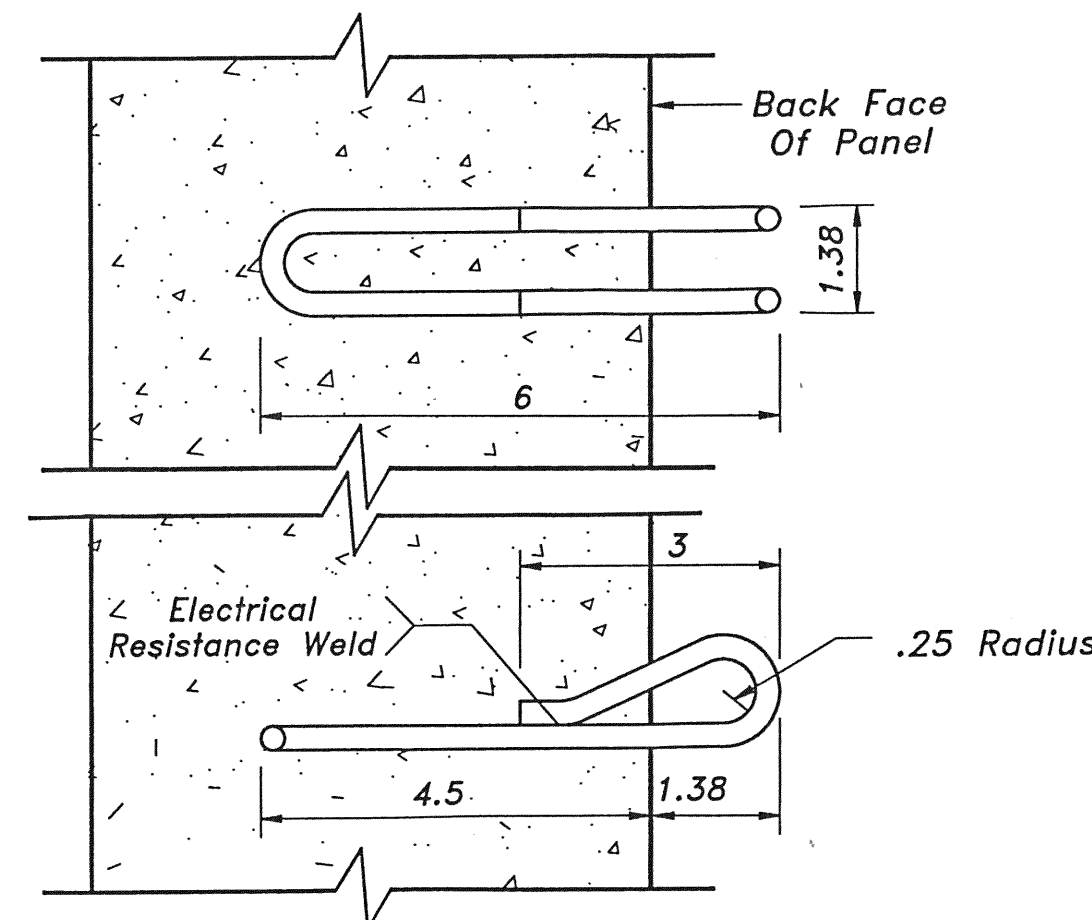


GEOTEXTILE FABRIC DETAIL

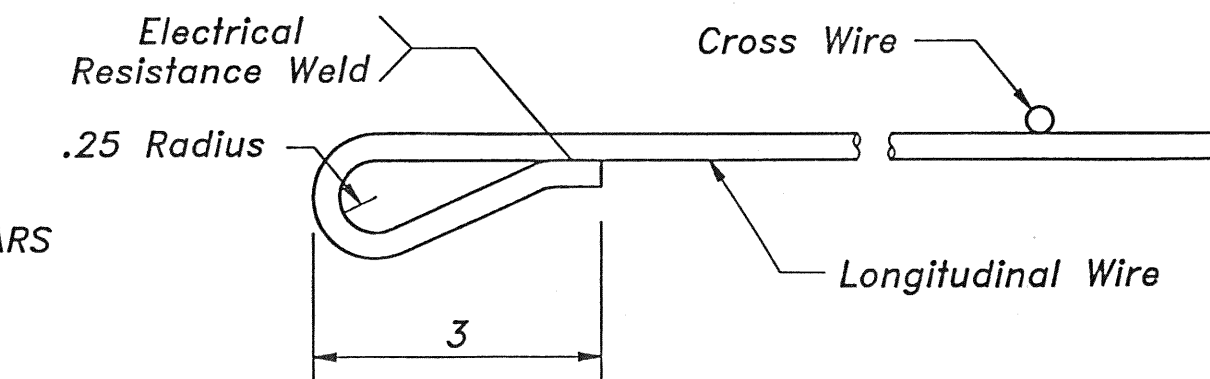
Back Face View



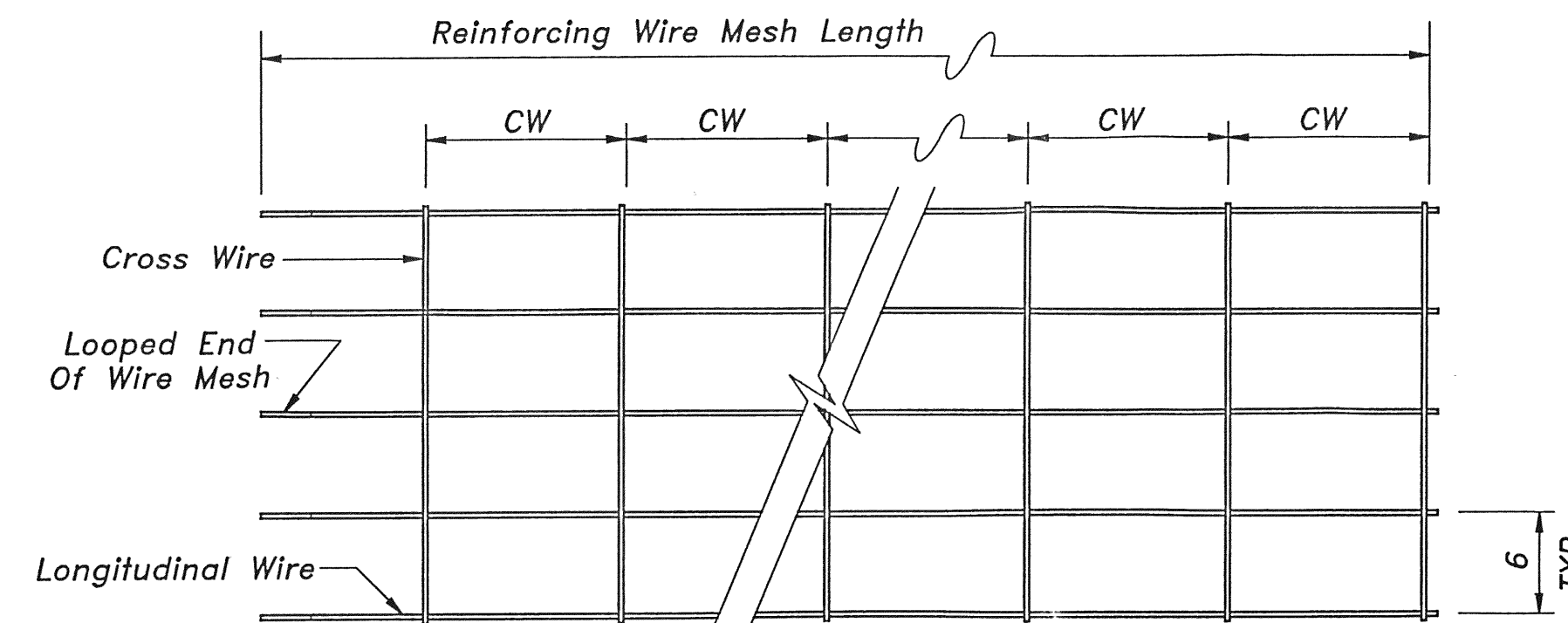
SECTION A-A



LOOP EMBED DETAIL



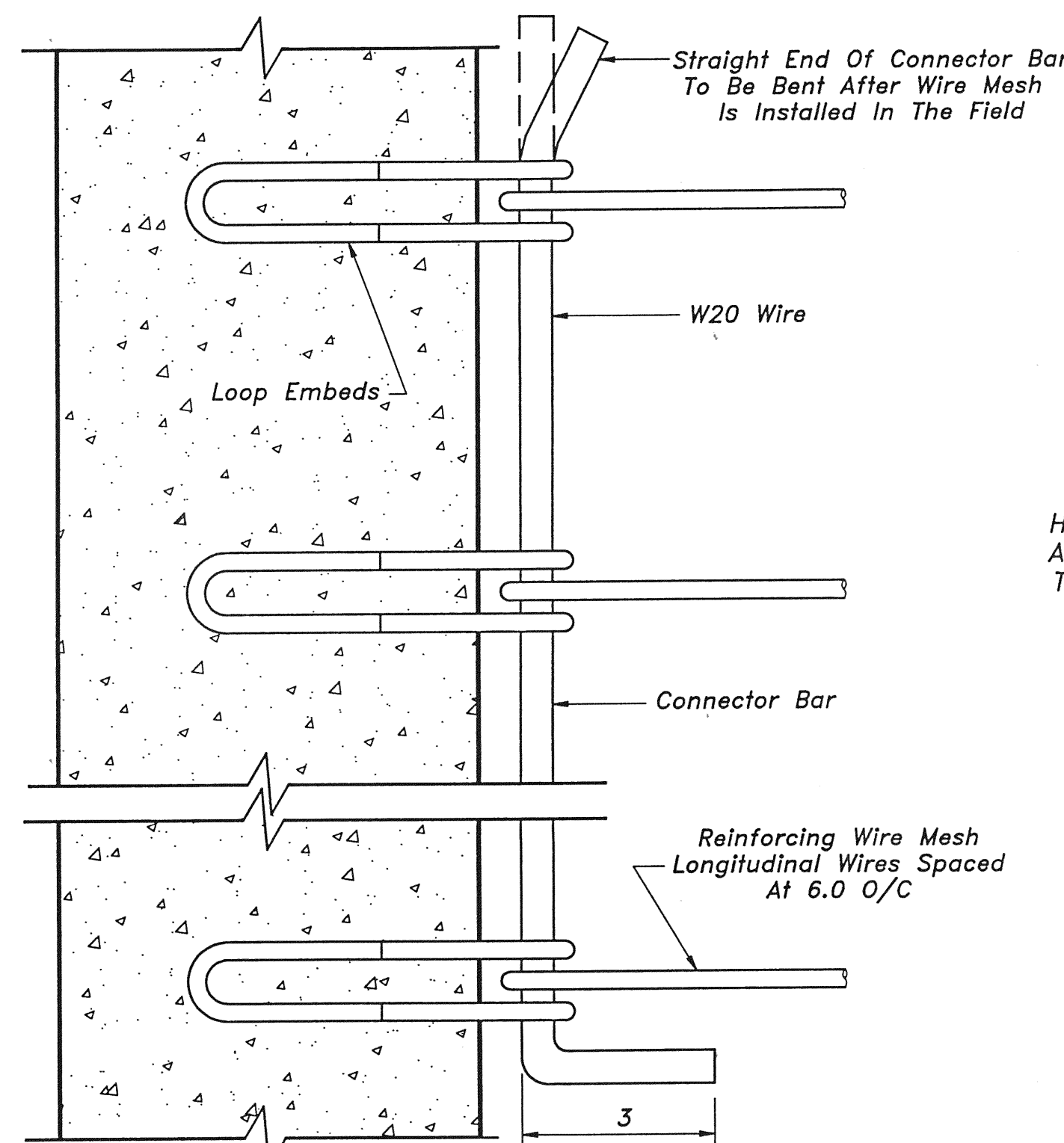
WIRE MESH LOOP DETAIL



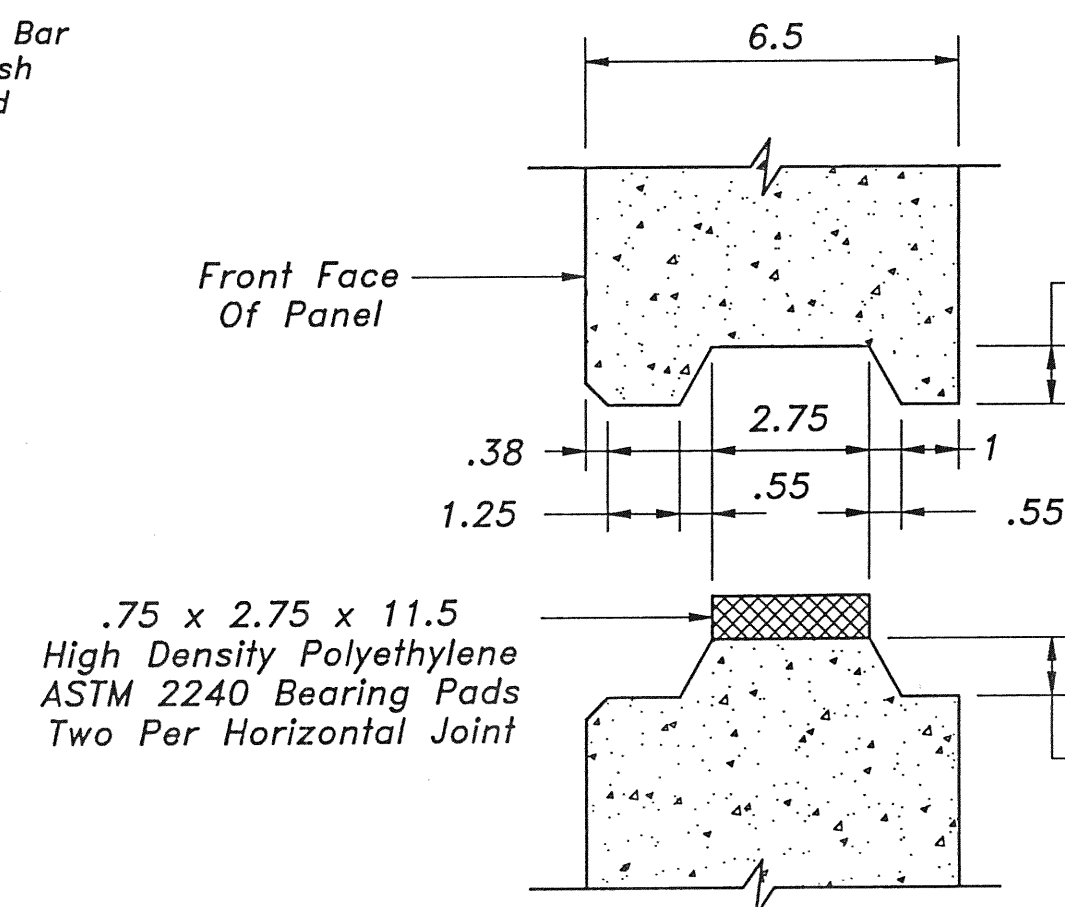
WIRE MESH DESIGNATION

5W11 + W11 x 1.5
No. Of Longitudinal Wires
Size Of Longitudinal Wires
Size Of Cross Wires
Spacing (Ft.) Of Cross Wires (CW)

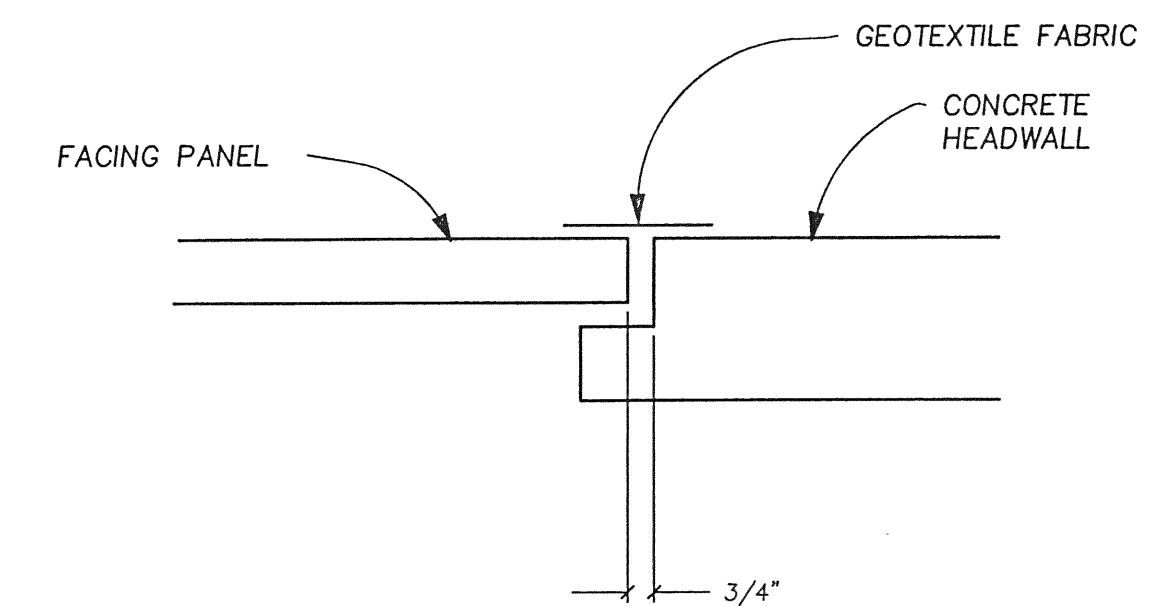
REINFORCING MESH DETAIL



REINFORCING MESH CONNECTION DETAIL



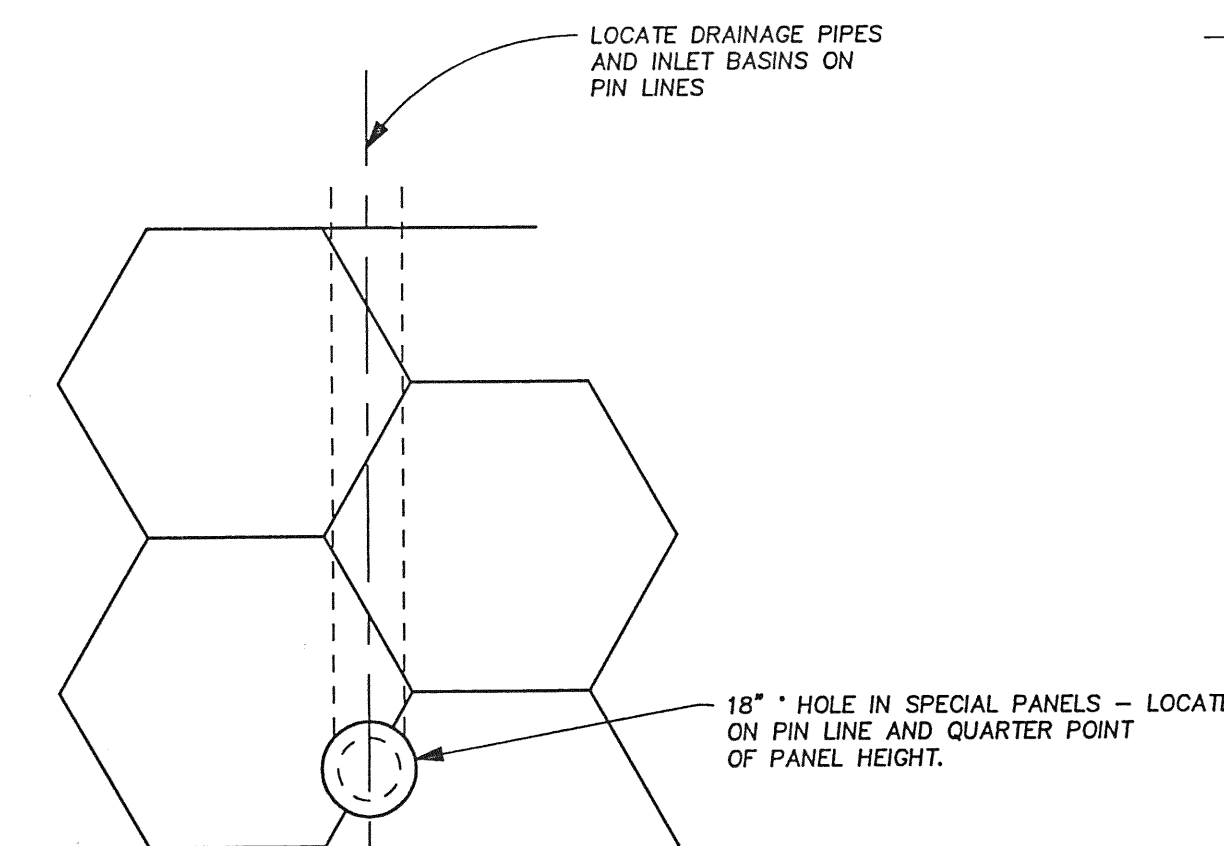
PANEL JOINT DETAIL



VERTICAL JOINT AT HEADWALLS

NOTES :

- W11 And W20 Steel Wire Shall Conform To The ASTM Designation A82. The Welded Wire Mat, Loop Embed, And Mesh Loop Shall Be Welded In Accordance With ASTM Designation A185.
- Alignment Pins Shall Be .75 ϕ Rigid PVC Or Galvanized Steel.
- Reinforcing Mesh, Loop Embeds And Connector Bars Shall Be Galvanized In Accordance With ASTM Designation A123.
- Concrete Panels To Have 28 Day Compressive Strength of 4000 P.S.I.



HOLE FOR DRAINAGE PIPE

SEE DETAIL NO. 32

DESIGN OF ALL WALLS IS BASED ON THE ASSUMPTION THAT ALL MATERIALS, INCLUDING THE RETAINED EARTH BACKFILL, AND METHODS OF CONSTRUCTION CONFORM TO THE SPECIFICATIONS FOR RETAINED EARTH WALLS

THESE DRAWINGS ARE CERTIFIED WITH RESPECT TO INTERNAL STABILITY OF RETAINED EARTH STRUCTURES ONLY.

JOHN W. PARKIN
CONSULTING CIVIL AND STRUCTURAL ENGINEER

D2317-23

NO.	DATE	REVISION	BY

1071 Oak Avenue
Berkeley, CA 94708
Telephone: 415/858-5000
Telefax: 510/9910424

VSL CORPORATION
ATLANTA, GA / CAMBELL, CA / DALLAS, TX / DENVER, CO / HOUSTON, TX / KANSAS CITY, MO / LOS ANGELES, CA / MINNEAPOLIS, MN / PORTLAND, OR / SAN FRANCISCO, CA / SEATTLE, WA / SPRINGFIELD, VA / WASHINGTON, DC

UTAH DEPARTMENT OF TRANSPORTATION
SR-91 BRIGHAM CITY TO MANTUA
STANDARD DETAILS

This set of these plans was prepared for the job specified on the sheets of this set. No other use, reproduction, or distribution is permitted without the written consent of VSL Corporation.

UTAH DEPARTMENT OF TRANSPORTATION
SR-91 BRIGHAM CITY TO MANTUA
STANDARD DETAILS

PRINT STATUS:

JOB NO:

SHEET: **6** OF: **6**