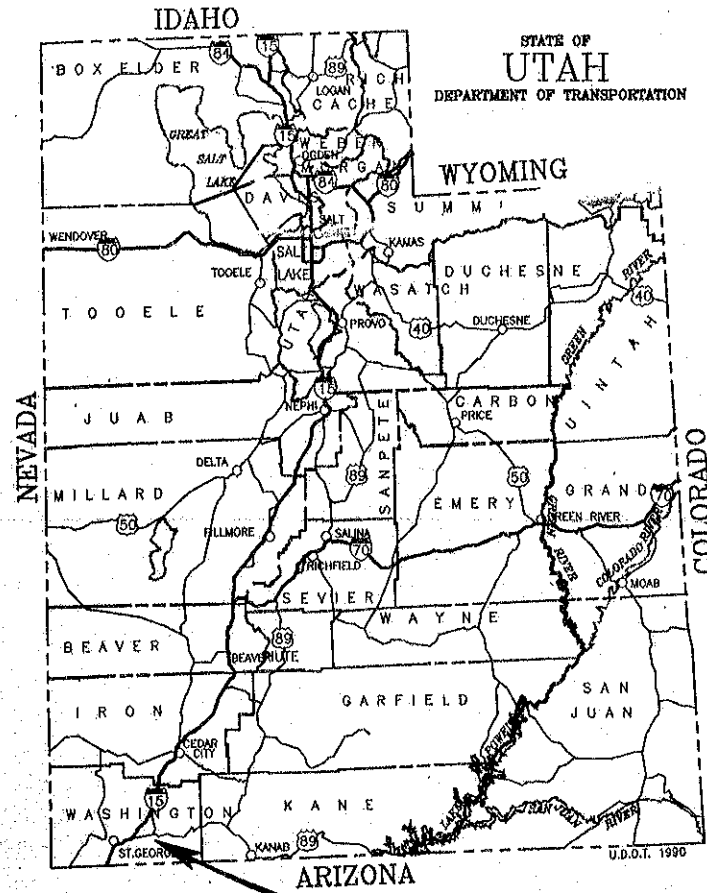


REG 10/10/93

FED. ROAD DIST. NO.	STATE	PROJECT NO.	SHEET NO.
UTAH	UTAH	SP-0009(2)0	1

FOR INDEX TO SHEETS SEE SHEET 1A

NOTE: ANY PLACE THE PROJECT NUMBER NF-16(2) APPEARS IN THESE PLANS OR SPECIFICATIONS, IT SHALL BE UNDERSTOOD TO BE SP-0009(2)0.



UTAH DEPARTMENT OF TRANSPORTATION

PLANS OF PROPOSED STATE ROAD

SP-0009(2)0

SR-9

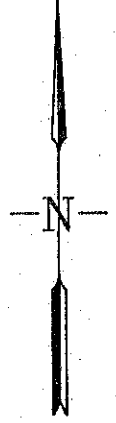
**I-15 TO FLORA-TEC ROAD
WASHINGTON COUNTY**

GRADING, SURFACING, DRAINAGE, STRUCTURES, AND SIGNING

LENGTH = 4.860 MILES

(SR-9) M.P. -0.13 TO M.P. 4.77

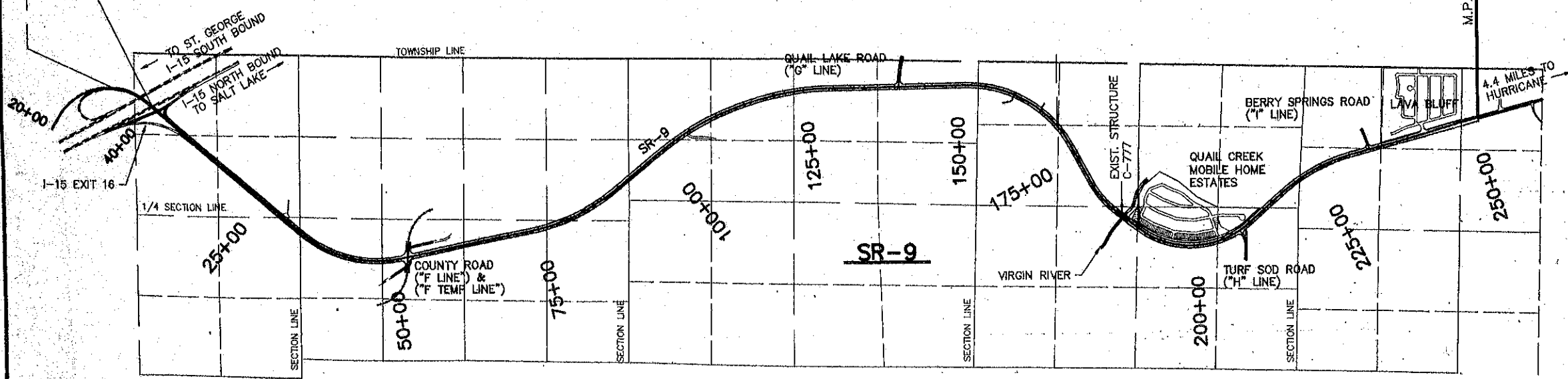
RETURN TO REGION 4 FILE ROOM



M.P. -0.13
STA. 33+00
BEG PROJECT
SP-0009(2)0

M.P. 0.00
STA. 2+50 AHEAD
STA. 40+10.58 BACK
EQUATION
SP-0009(2)0

M.P. 4.77
STA. 252+00
END PROJECT
SP-0009(2)0



UTAH DEPARTMENT OF TRANSPORTATION
 RECOMMENDED FOR APPROVAL *Jan G.* 1993
Frank A. P. CHIEF, ROADWAY DESIGN
 RECOMMENDED FOR APPROVAL *Jan G.* 1993
Dyke M. LeFevre ENGINEER FOR PRECONSTRUCTION
 APPROVED *Jan G.* 1993
D.P. [Signature] ASSISTANT DIRECTOR

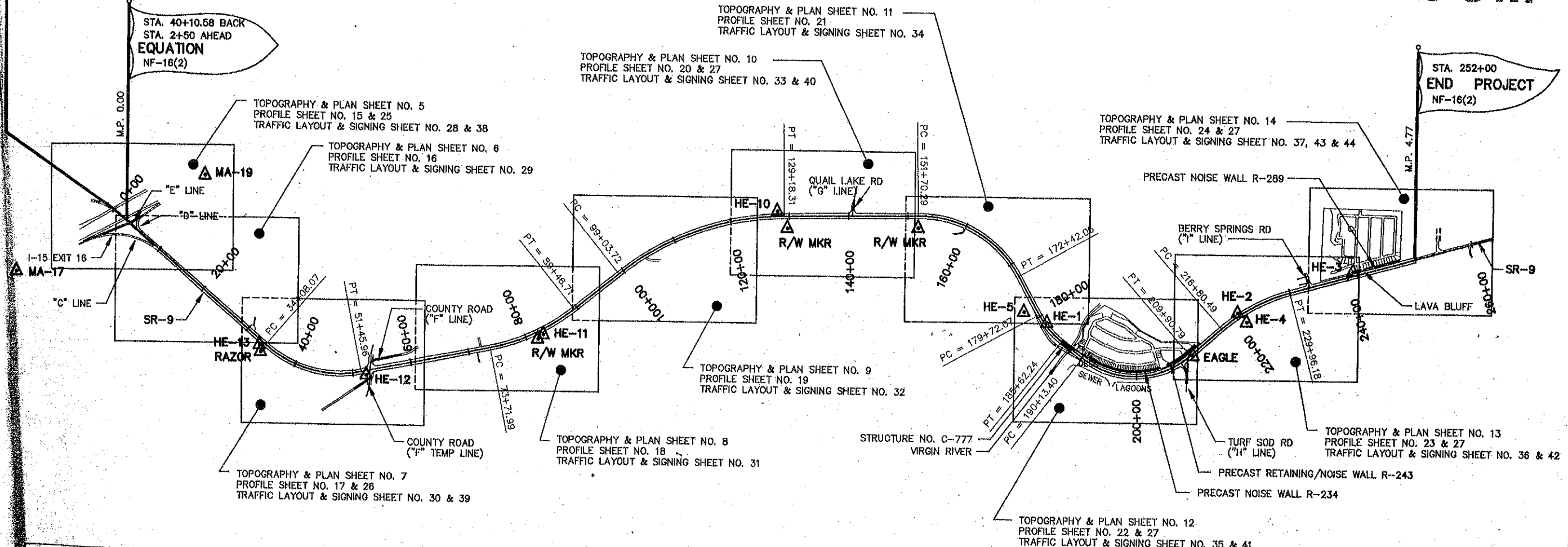
CROSS REFERENCE SHEET

RETURN TO REGION 4 FILE ROOM

STA. 33+00
BEG PROJECT
NF-16(2)

STA. 40+10.58 BACK
STA. 2+50 AHEAD
EQUATION
NF-16(2)

STA. 252+00
END PROJECT
NF-16(2)

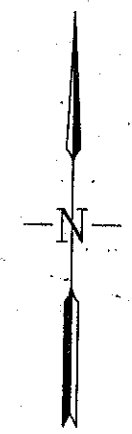


HORIZONTAL CONTROL

POINT	NORTHING	EASTING	STATION	OFFSET	SIDE	REMARKS
MA-17	187242.27	1430349.16	-6+21.74	1899.66	RT	2 1/2" ALUM DISK
MA-19	188873.43	1433592.21	7+65.68	1454.904	LT	2 1/2" ALUM DISK
RAZOR	185928.67	1434553.12	34+17.36	145.044	RT	2 1/2" ALUM DISK
HE-13	186043.54	1434531.97	33+26.96	71.938	RT	1 1/2" ALUM CAP/REBAR
HE-12	185564.47	1436350.51	52+20.90	68.832	RT	1 1/2" ALUM CAP/REBAR
HE-11	186284.39	1439346.38	82+89.31	81.118	RT	1 1/2" ALUM CAP/REBAR
HE-10	188406.68	1443272.43	128+07.40	86.074	LT	1 1/2" ALUM CAP/REBAR
HE-5	186776.60	1447440.21	178+11.07	203.529	RT	1 1/2" ALUM CAP/REBAR
HE-4	186654.12	1451202.32	221+04.90	165.987	RT	1 1/2" ALUM CAP/REBAR
HE-3	187528.61	1452982.65	241+22.19	64.278	LT	#4 REBAR
HE-2	186807.06	1451047.57	220+61.03	47.302	LT	#4 REBAR
HE-1	186599.53	1447828.50	181+59.06	39.451	LT	#4 REBAR
EAGLE	186076.10	1450310.43	210+29.50	34.992	RT	R/W MKR RT SIDE
R/W MKR	188162.24	1445641.93	151+70.33	199.950	RT	150+62.44 RT SIDE
R/W MKR	188125.03	1443443.12	129+71.20	199.810	RT	128+12.88 RT SIDE
R/W MKR	186208.93	1439252.98	81+75.38	107.259	RT	80+50.36 RT SIDE

VERTICAL CONTROL

POINT	ELEVATION	REMARKS
BM	3132.53	R/W MKR LT 10+25
BM	3122.53	R/W MKR RT 40+00
BM	3132.51	R/W MKR LT 51+50
BM	3132.03	R/W MKR LT 66+66
BM	3116.39	R/W MKR LT 73+68
BM	2924.64	R/W MKR RT 128+22
BM	2826.37	R/W MKR LT 166+50
BM	2810.60	R/W MKR LT 172+38
TBM 199	2803.33	REBAR 60' LT 199+00
TBM 210	2804.88	REBAR 75' LT 210+00
TBM 220	2813.29	REBAR 80' LT 220+00
TBM 230	2823.88	REBAR 72' LT 230+00
TBM 236	2847.02	LAG BOLT IN POWER POLE 88' LT 236+50
TBM 244	2894.69	REBAR 75' LT 244+00



UTAH DEPARTMENT OF TRANSPORTATION
DISTRICT 5 CEDAR CITY, UTAH
ROADWAY DESIGN

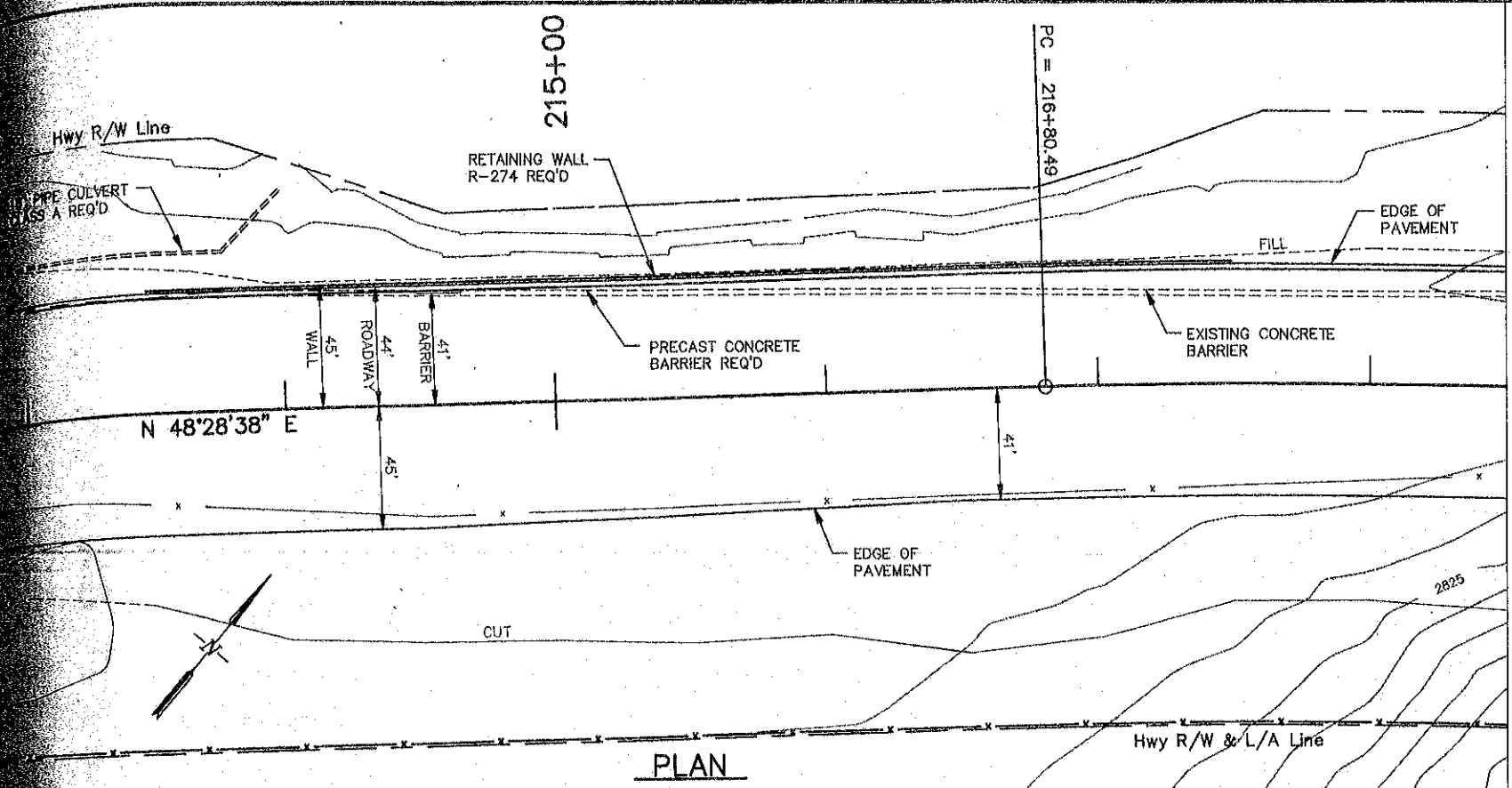
SR-9
I-15 INTERCHANGE TO
FLORA-TEC ROAD

CROSS REFERENCE SHEET

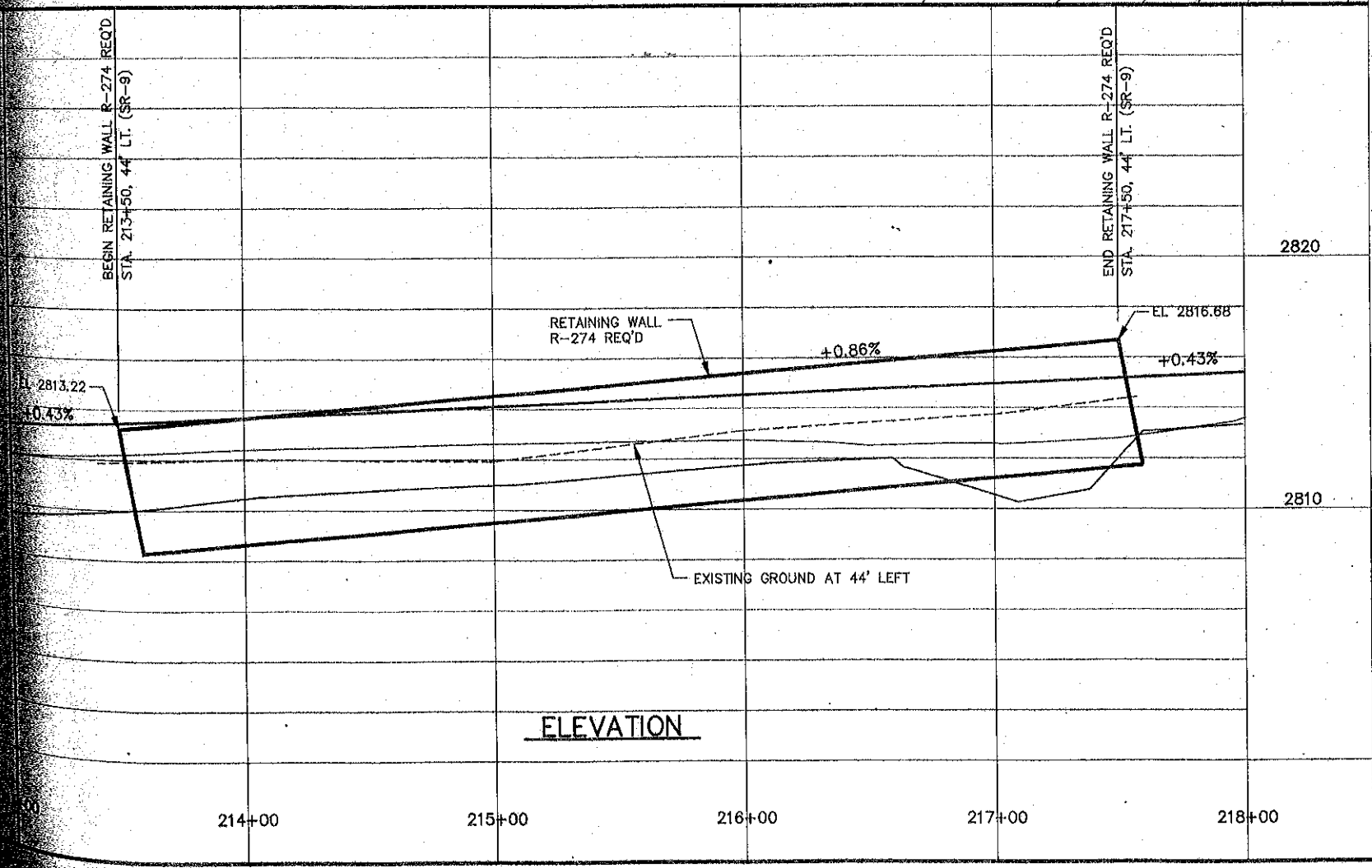
PROJECT NUMBER NF-16(2)

WASHINGTON COUNTY
SHEET NO. 1C

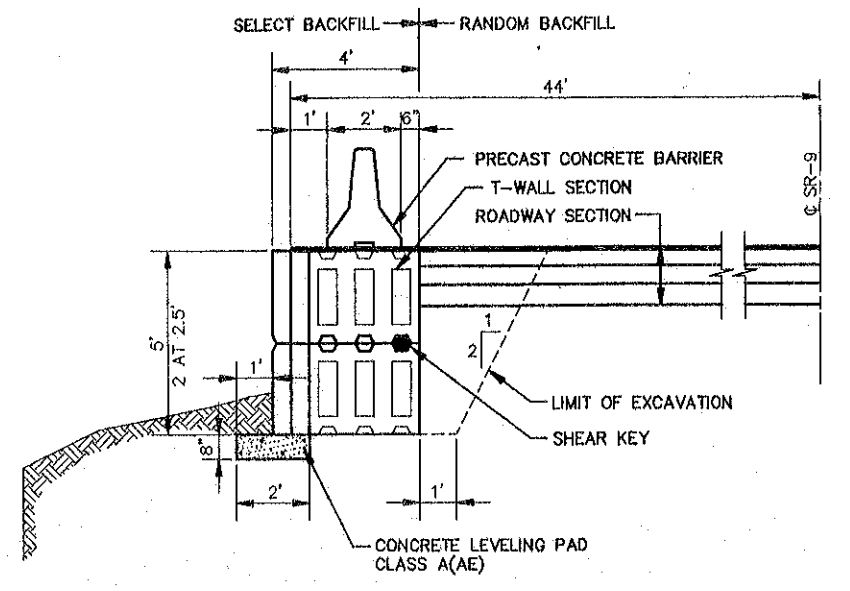
DESIGN	DRL	2/91	CHECK	JRH	2/91	REVIEW
DRAWING	JKP	2/91	CHECK	DRL	2/91	DATE
DATE						
DATE						



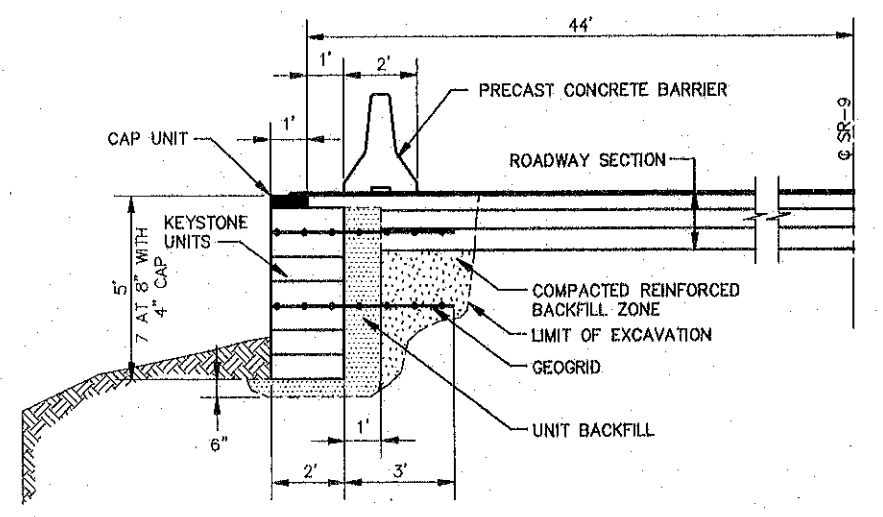
PLAN



ELEVATION



RETAINED EARTH WALL (ALTERNATE #1) CROSS SECTION



REINFORCED EARTH WALL (ALTERNATE #2) CROSS SECTION

EARTH WALL SUMMARY					
STATION		LINE	LT OR RT	RETAINED ALTERNATE #1	REINFORCED ALTERNATE #2
FROM	TO			SQ. FT.	SQ. FT.
213+50	217+50	SR-9	LT	2000	2000
TOTAL / USE				2000	

UTAH DEPARTMENT OF TRANSPORTATION SALT LAKE CITY, UTAH STRUCTURES DEPARTMENT		
SR-9		
I-15 INTERCHANGE TO FLORA-TEC ROAD		
EARTH WALL R-274		
DESIGN DRL 6/92	CHECK DRL 6/92	REVIEW
DRAWN JKP 6/92	CHECK DRL 6/92	DESIGN
QUANT.	CHECK	R/W
APPROVAL RECOMM. DATE 7/1/92	PROJECT DESIGN ENGINEER	
APPROVED	SALT LAKE COUNTY	
DATE	PLAN & ESTIMATES ENGINEER	
PROJECT NUMBER NF-16(2)	DWG NO. R-274	
REVISIONS	SHEET 1 OF 1	

NO.	DATE	DESIGN REV. BY	INSP. CORR. BY	PARCELS AFFECTED	REQUEST BY	REMARKS
ORIGINAL SUBMISSION FOR AUTHORIZATION						
REVISIONS						