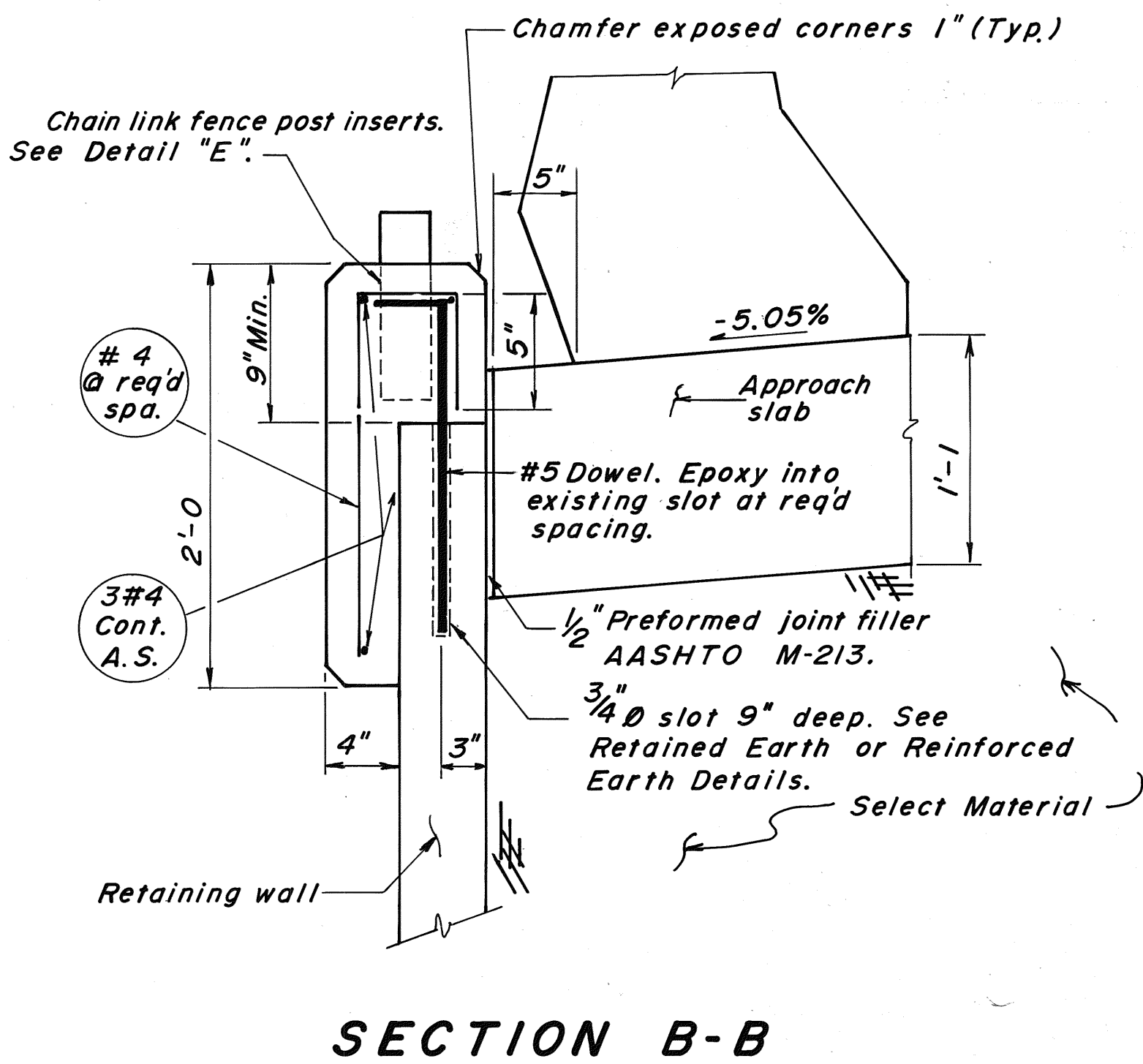
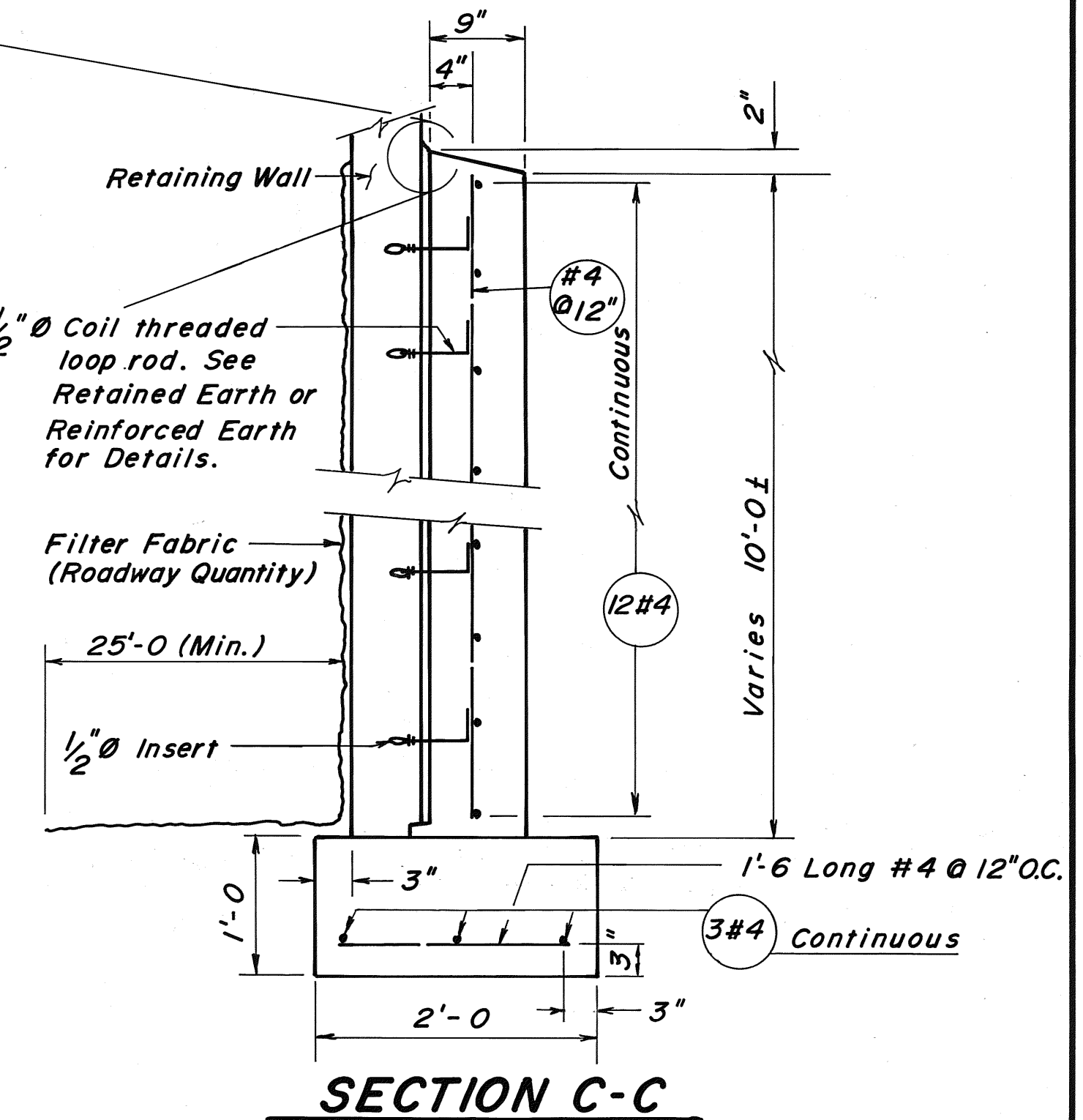
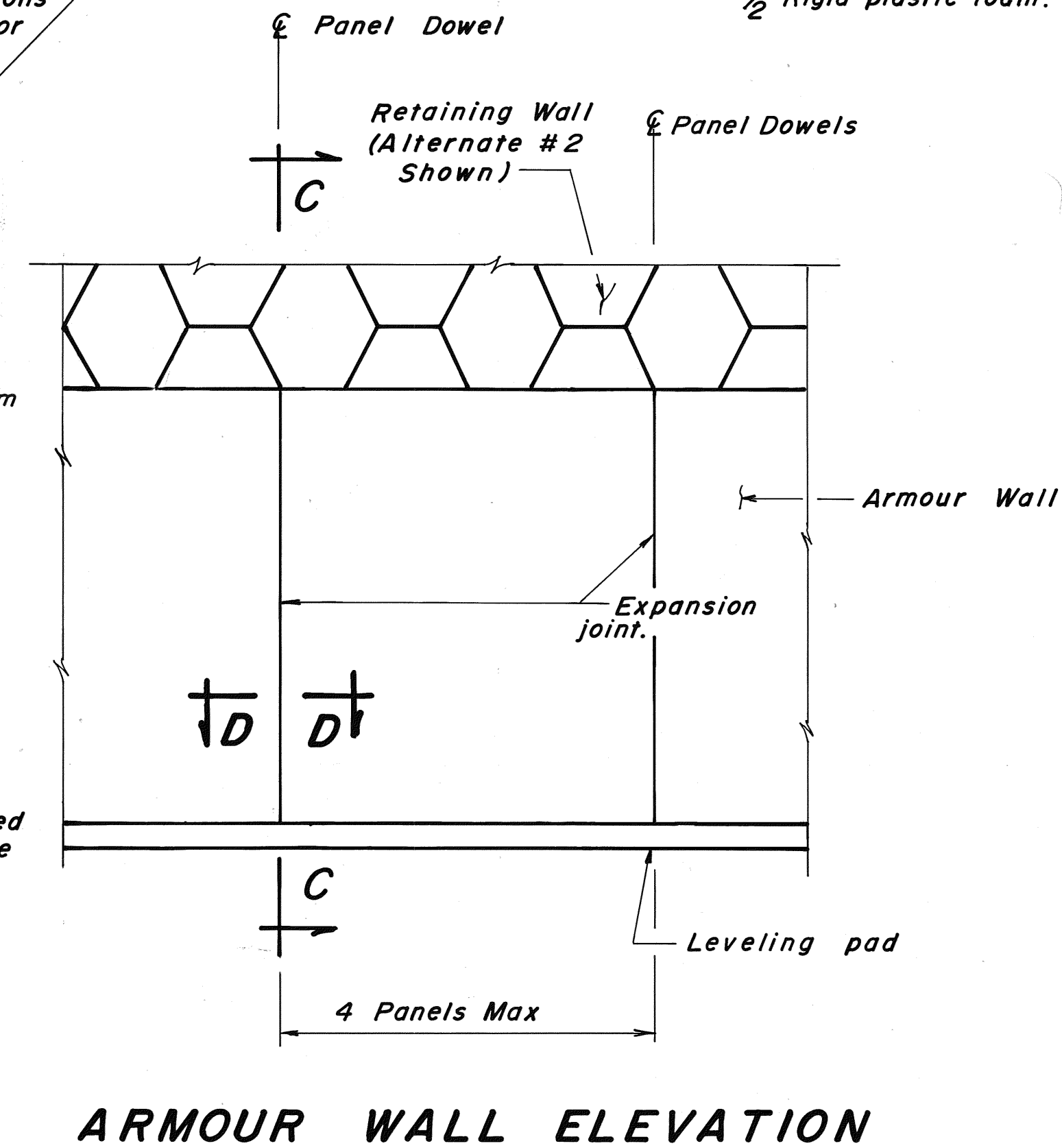
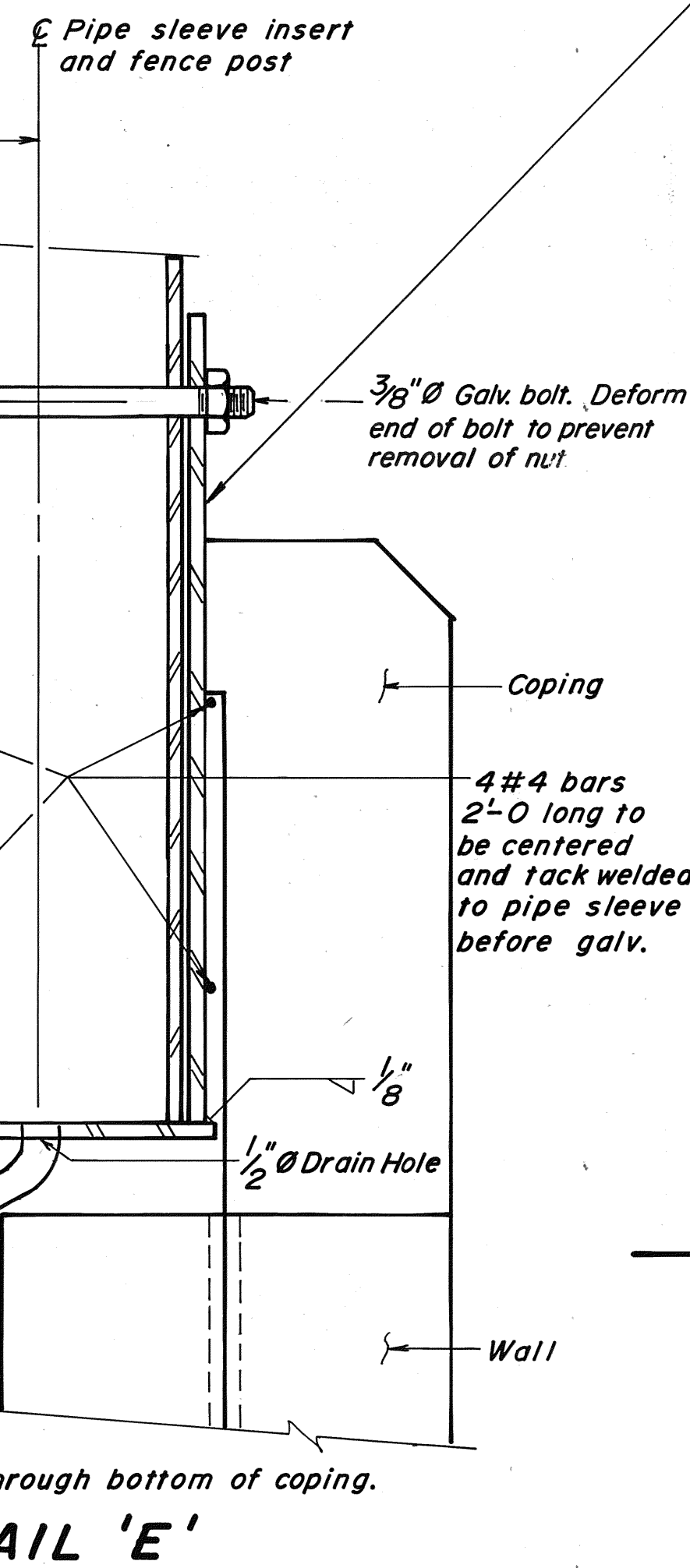


**SECTION D-D**

NOTE: Cost of 1/2" rigid plastic foam, reinforcing steel, 5/8" Ø Backer rod and polyurethane sealant shall be included in the price for armour wall.

4.500" O.D. (10.79 LB./FT.) Galvanized pipe sleeves to receive 2.875" O.D. end posts and 3.500" O.D. (7.58 LB./FT.) Galvanized pipe sleeves to receive 1.900" O.D. line posts. Pipe sleeve assembly shall be hot-dip galvanized after fabrication in accordance with the A.A.S.H.T.O. specifications M111 (A.S.T.M. A-123). Include in the contract price for concrete coping.



NOTE: Cost of Epoxy, Dowels, Fence posts and Reinforcing steel shall be included in the cost of concrete coping.

**WALL QUANTITIES**

ITEM	ESTIMATED	UNIT	AS CONST.
Retaining Wall	18,558.	Sq. Ft.	
Armour Wall	1	Lump	
Leveling Pad	703	Lin. Ft.	
Concrete Coping	705	Lin. Ft.	

UTAH DEPARTMENT OF TRANSPORTATION SALT LAKE CITY, UTAH STRUCTURES DIVISION			
I-215 TO BIG COTTONWOOD CANYON RETAINING WALL			
DESIGN	10-17-88	CHECK	SR-190
DRAWN	LLB/10/18/88	CHECK	10-20-88
QUANT	LLB/10/18/88	CHECK	10-20-88
APPROVAL	1-25-89	DATE	SALT LAKE COUNTY
APPROVED	2-3-89	DATE	DRG. NO.
F-068(3)			R-181
PROJECT NUMBER			SHT. 2 OF 3

NO.	BY	DATE	REMARKS
1	MPP	2-28-89	Added joint filler on Detail "A"
REVISIONS			