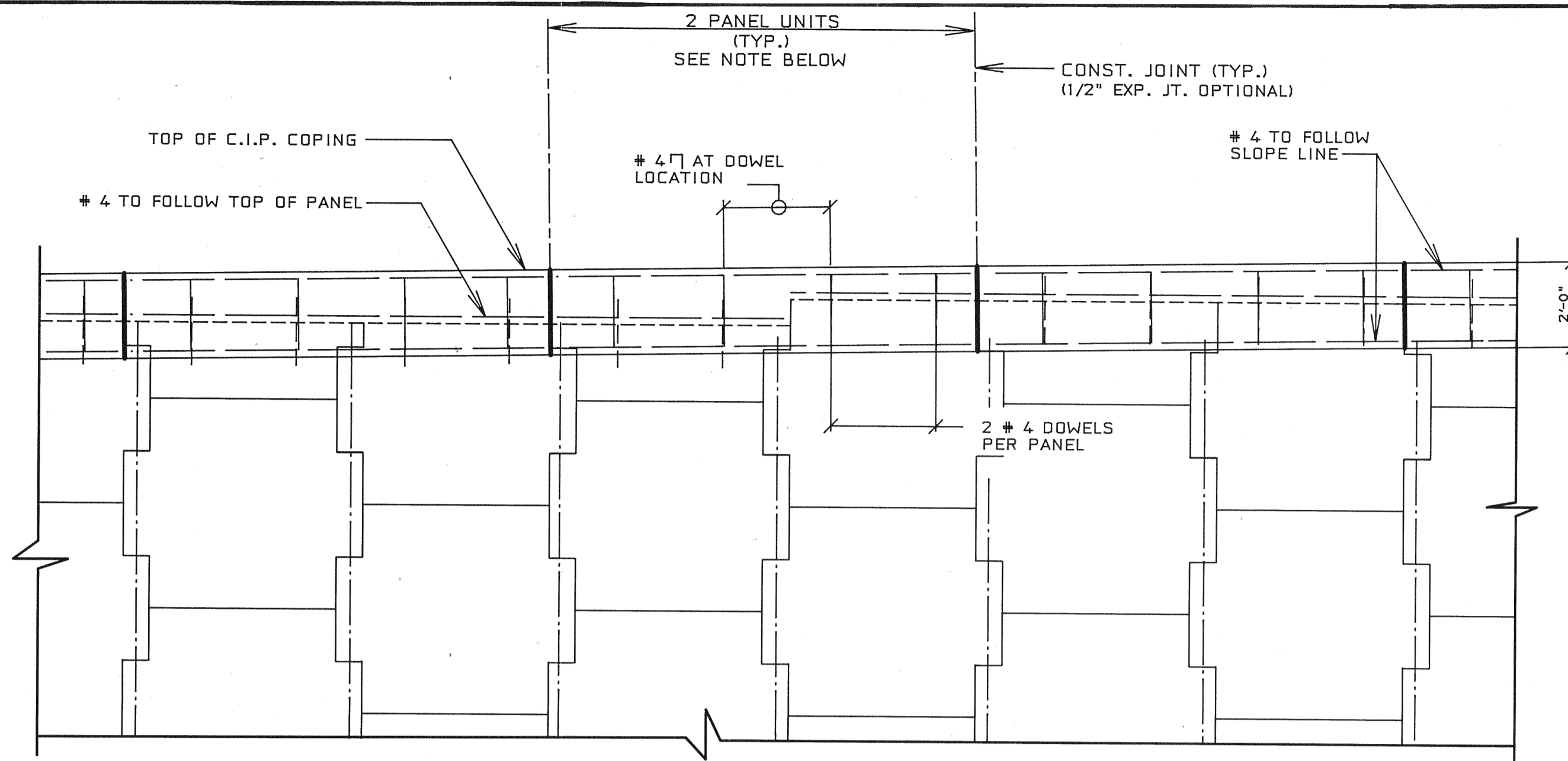
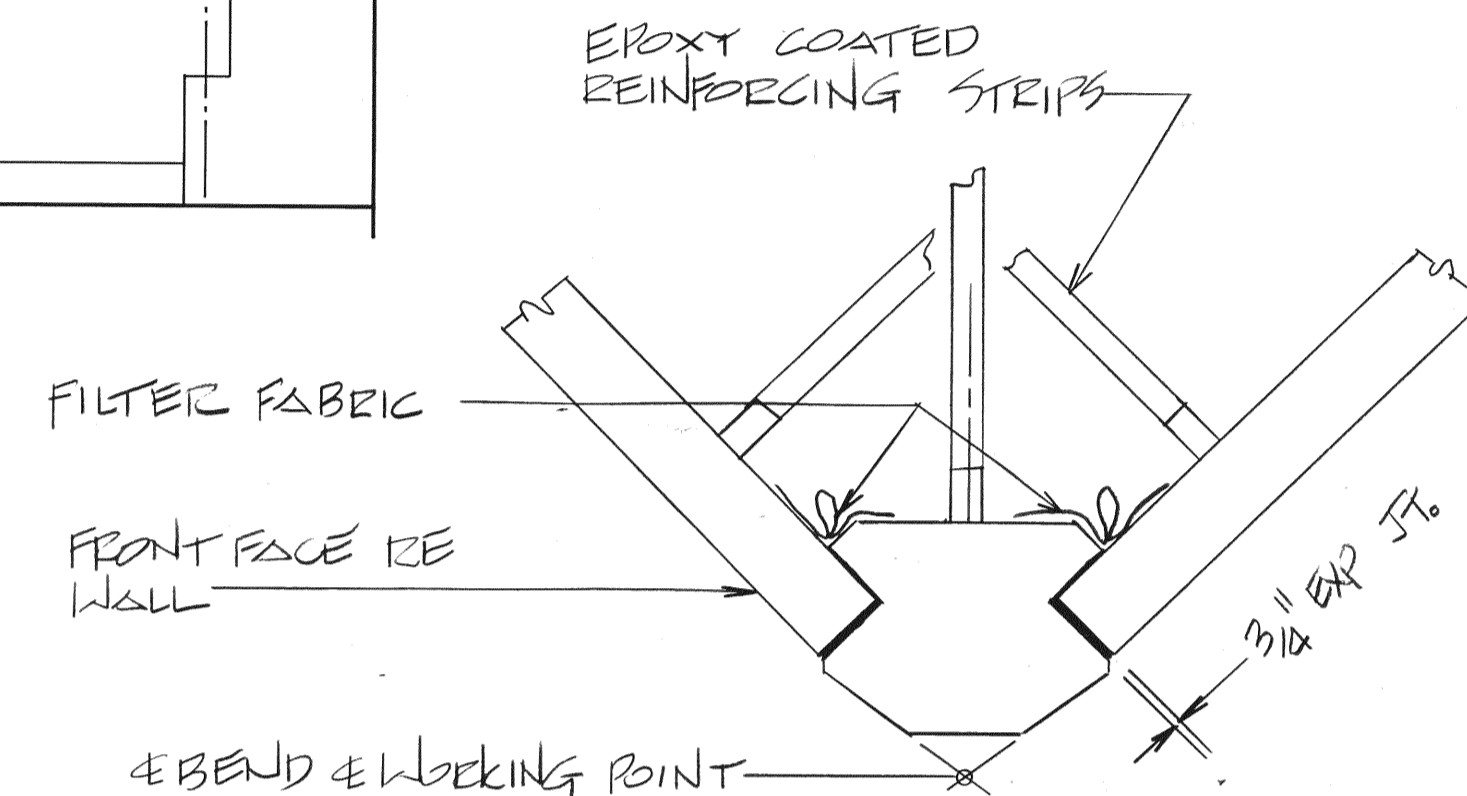


C.I.P. CONC. COPING DETAIL

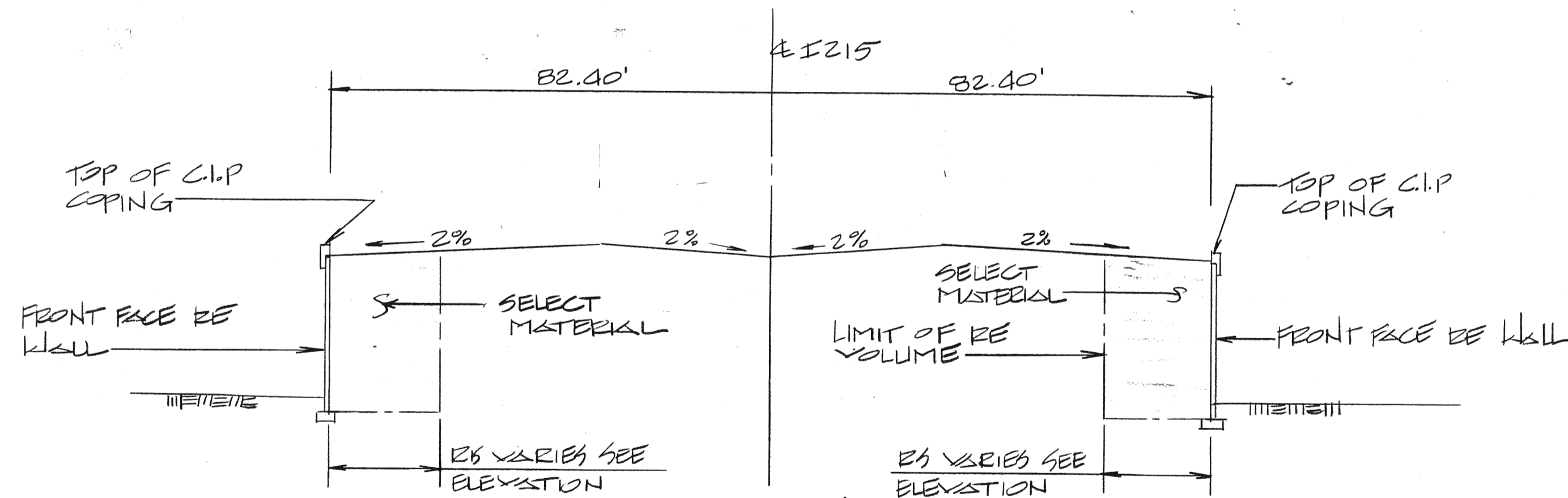


NOTE:
JOINTS IN C.I.P. COPING SHALL BE AT 2 PANEL INTERVALS. COPING JOINTS MUST COINCIDE WITH PANEL JOINTS ON FRONT FACE, WHERE BOTTOM OF 4" LIP INTERSECTS WITH JOINT AND SHALL BE PERPENDICULAR TO SLOPE LINE. REINFORCING STEEL SHALL BE STOPPED 2" SHORT OF EITHER SIDE OF THE CONSTRUCTION JOINT.

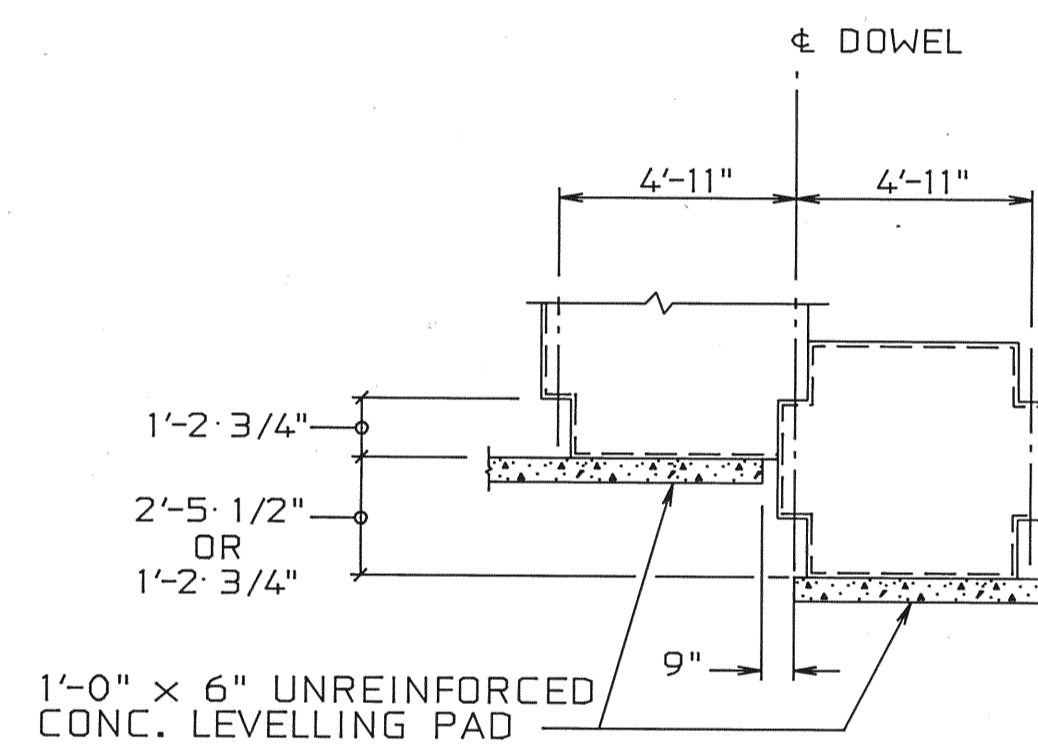
C.I.P. COPING PARTIAL ELEVATION



PRECAST CONCRETE CORNER STANDARD DETAIL



TYPICAL SECTION THRU WING WALLS (CALIFORNIA AVE.)



TYPICAL LEVELLING PAD STEP DETAIL

NOTE:
LEVELLING PAD MUST BE POURED TO THE DESIGN ELEVATIONS AS SHOWN ON THE WALL ELEVATION VIEWS. THE ALLOWABLE ELEVATION TOLERANCES ARE 0.01' (+) AND 0.02' (-). PRECAST PANEL JOINT FILLER MATERIAL IS NOT PERMITTED BETWEEN PRECAST PANEL AND LEVELLING PAD UNLESS AUTHORIZED IN WRITING BY THE REINFORCED EARTH COMPANY.

Changes

Chris	8/14/87	Change corner detail title
"REINFORCED EARTH" IS THE REGISTERED TRADEMARK OF THE REINFORCED EARTH COMPANY.		

This drawing contains information proprietary to The Reinforced Earth Company, and is being furnished for the use of UTAH DEPT. OF TRANSPORTATION only in connection with this project, and the information contained herein is not to be transmitted to any other organization unless specifically authorized in writing by The Reinforced Earth Company. The Reinforced Earth Company is exclusive licensee in the United States under patents issued to Henri Vidal, and the furnishing of this drawing does not constitute an express or implied license under the Vidal patents.

The Reinforced Earth Company
Roslyn Center, 1700 North Moore Street, Arlington, Virginia 22209
(703) 527-3434

DESIGNED BY: DRG	DATE
PROJ. ENGR: GWS	4.23.97
CHECKED BY: GWS	

SALT LAKE CITY UTAH
I-215
CALIFORNIA AVE INTERCHANGE

PROJECT No. I-IR 215-9(82)19
DRWG No. E-146