


### CONSTRUCTION NOTES

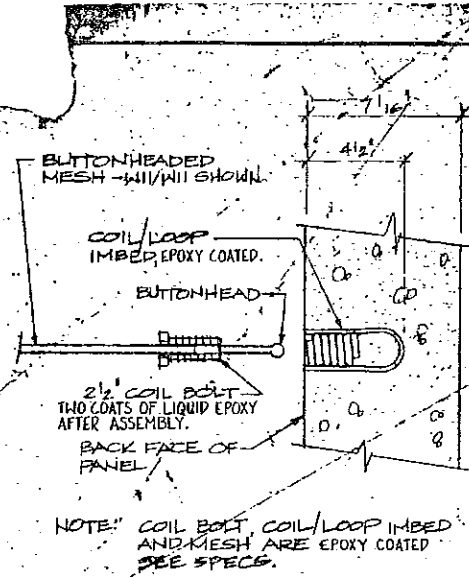
1. No horizontal joint material is required between the leveling pad and the first row of panels.
2. Enough c-clamps must be supplied by contractor to secure all panels along one complete lift.
3. Each c-clamp remains in position until it must be removed to allow access for placing of the next facing panel.
4. When placing the specified select material, the the following procedure is to be performed:
  - A. No heavy equipment shall be within 3' of panel back.
  - B. The area 3' behind the panel is placed last.
5. Care should be taken to not allow any hard wheeled placing or compacting equipment to run directly on top of the reinforcing mesh until they have been covered with select material.
6. The 3' area immediately behind the facing panels shall be compacted by means of a hand operated vibrating tamper.
7. As the select material is placed, the outside embankment should be constructed consecutively. Always place the select material to the required elevation first, followed by the placing of the embankment material.
8. At the end of each day, slope the select material away from the facing panels to provide adequate drainage.
9. All steel shall be epoxy coated.
10. All panels shall have architectural treatment of Scott System Phoenix limestone finish.

### CONSTRUCTION SEQUENCE

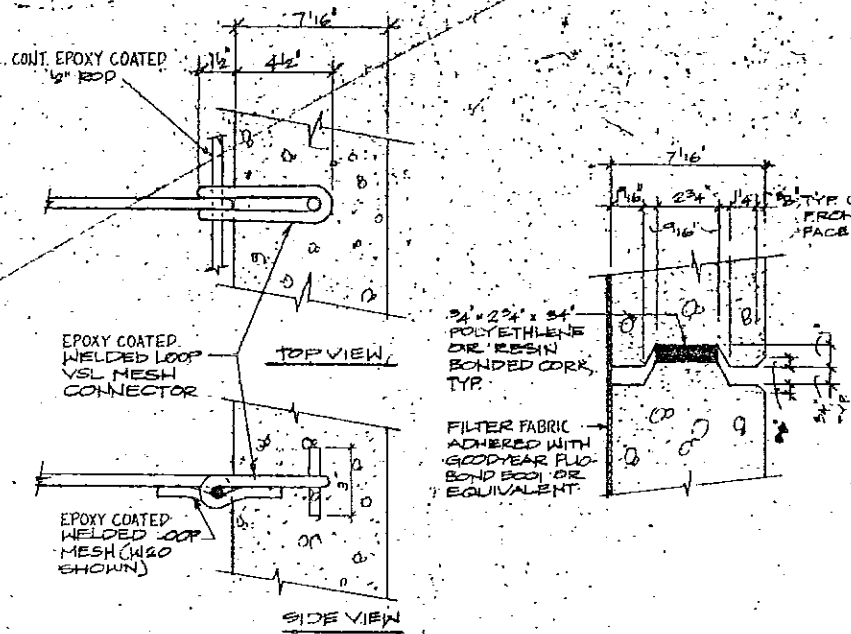
1. Excavate the area required for the foundation of the "RETAINED EARTH" structure to the elevation indicated on the plans. Care should be taken to assure that the width of the excavation meets or exceeds the total overall length of the soil reinforcement mesh.
2. The soil shall be compacted with the aid of a smooth wheel vibratory roller.
3. Cast a 6" x 12" unreinforced concrete leveling pad under the wall panel center-line as shown on the plans. No dowels, inserts, or keyway joints are required.
4. Begin erecting the first lift of full and half panels. Care should be taken to exactly position all bottom panels since this provides the spacing requirements for the remainder of the wall panels. Insert the steel rod alignment pins in the holes provided on each inclined surface.
5. Adequately brace full facing panels from the outside face to the existing ground with 1/4" per 5' batter, c-clamp the half panels to the full panels.
6. Using the adhesive supplied, glue the filter fabric to the the inclined joints between the panels.
7. Place and compact the first layer of select material until it reaches the elevation of the first row of embedded inserts on the back surface of the panel. This material should be placed in 8" lifts and compacted to 95% standard proctor density.
8. Place soil reinforcing mesh and attach to the panel by using the connector provided.
9. Place and compact additional select material, as directed in step 7, until the elevation reaches the top surface of the next row of facing panels.
10. Place the 3/4" x 2-3/4" x 34" preformed bearing pad material on the top horizontal surface of the facing panel.
11. Erect the next lift of facing panels. Temporarily position these panels to the adjacent row by using c-clamps. Adjust by using wood shims placed in the c-clamps. No further external bracing is required.
12. Glue the filter fabric to both the horizontal and inclined joints.
13. Place and compact the select material as directed in step 7, until it reaches the next row of inserts.
14. Repeat steps 8 thru 13 until the wall has reached the required height.

CERTIFIED WITH RESPECT TO INTERNAL STABILITY OF RETAINED EARTH STRUCTURES ONLY

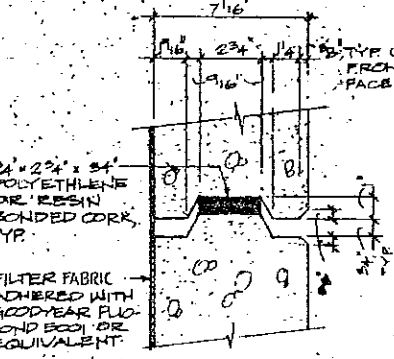
DES.		DRILL		CHK.		NO.		DATE		REVISION		BY	
 <b>VSI Corporation</b> LOS ANGELES, CA / CHICAGO, IL / DALLAS, TX / DENVER, CO / HUNTSVILLE, AL HOUSTON, TX / LOS ANGELES, CA / MIAMI, FL / NEW YORK, NY / WASHINGTON, D.C.													
The use of these plans and specifications shall be limited to the project and site for which they were prepared. No reproduction or distribution in any form is permitted without the express written consent of VSI Corporation. VSI Corporation is not responsible for any errors or omissions in these drawings. These drawings are preliminary and subject to change without notice.													
RETAINED EARTH WALLS CONSTRUCTION NOTES & SEQUENCE SR 189 PROVO CANYON UTAH													
Project No. F-019(31)													
JOB NO: 278-PB110 1 of 17													



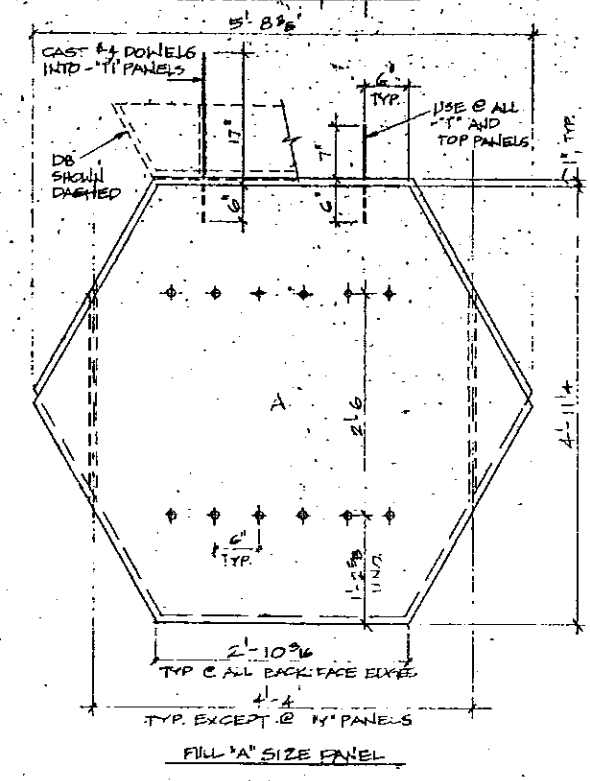
1 COIL/LOOP IMBED & BOLT DTL



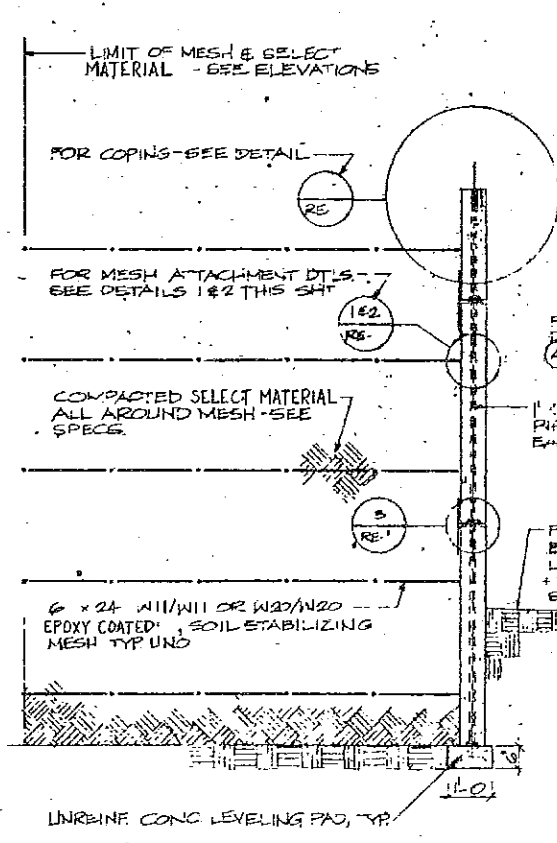
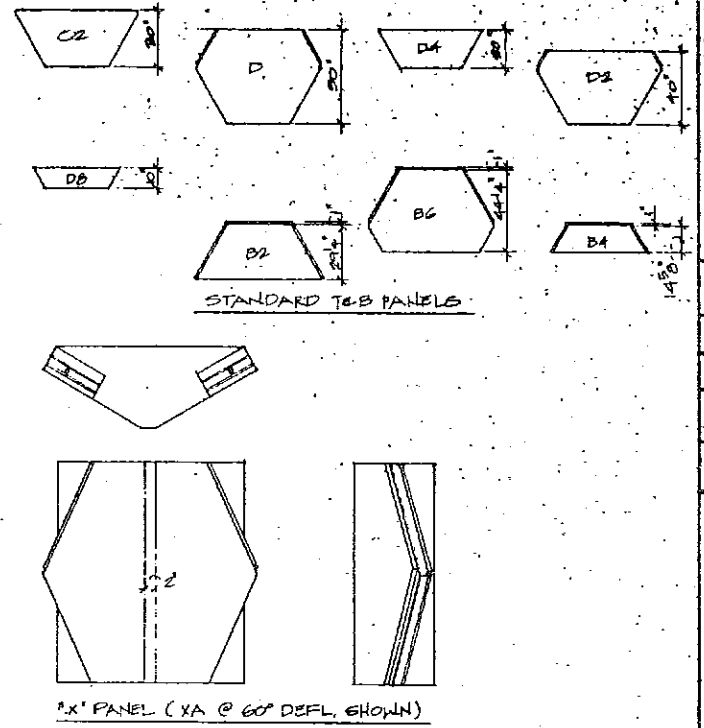
2 VSL MESH CONNECTOR DTL



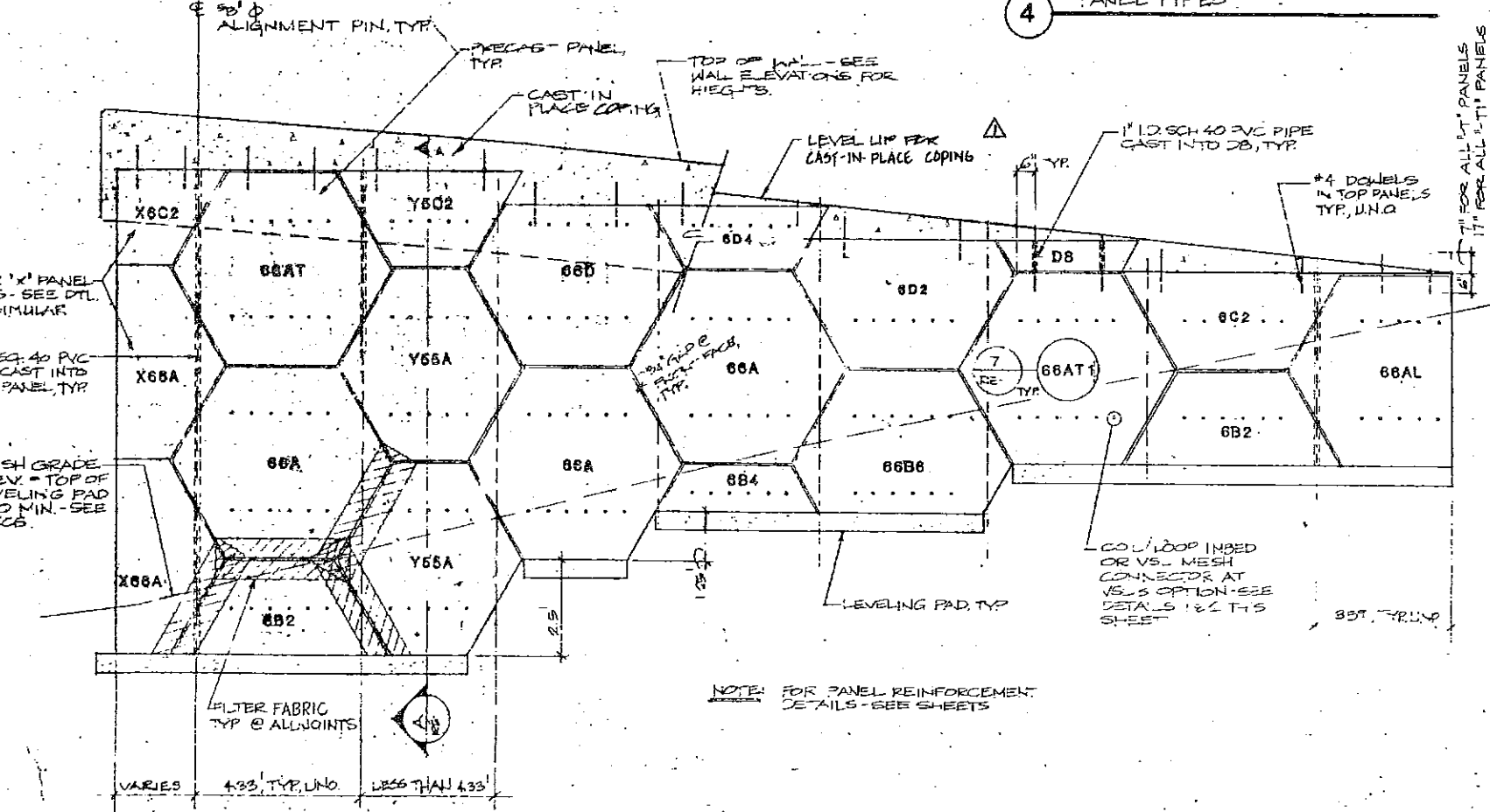
3 JOINT DETAIL



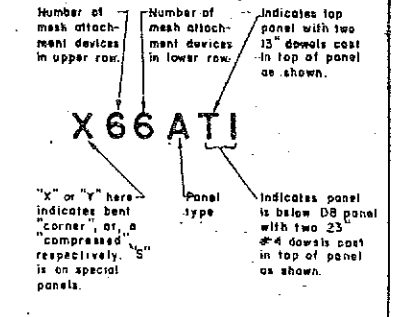
4 PANEL TYPES



5 WALL SECTION

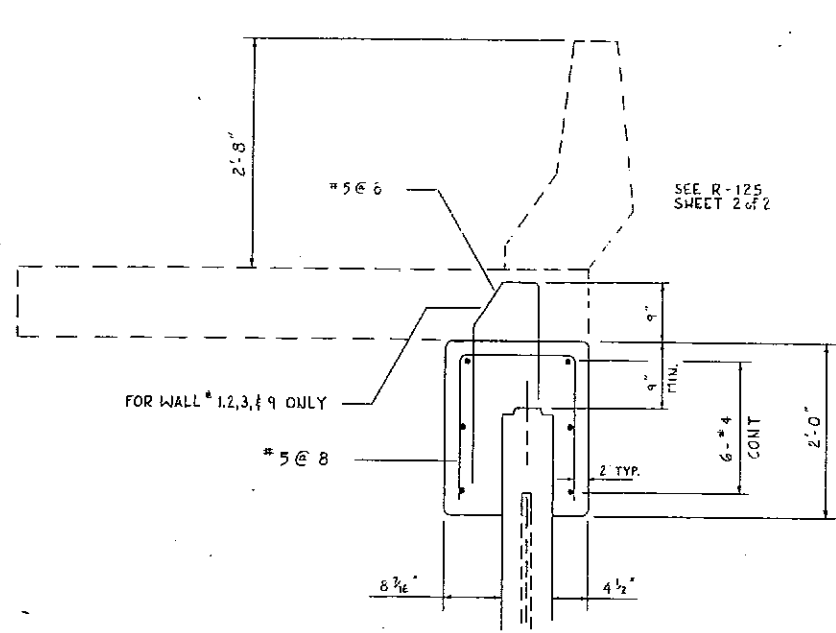


6 WALL ELEVATION

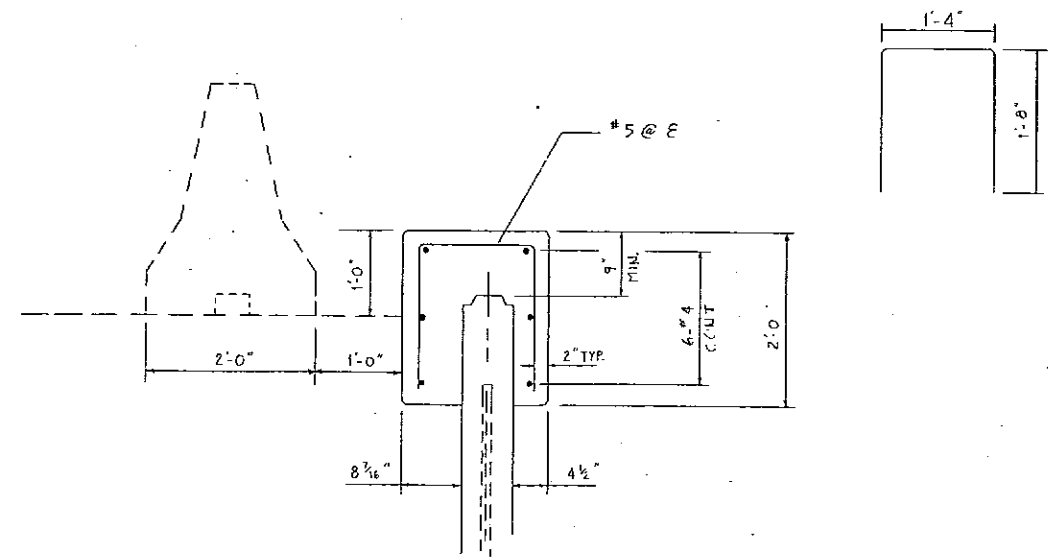


7 PANEL SYMBOLS

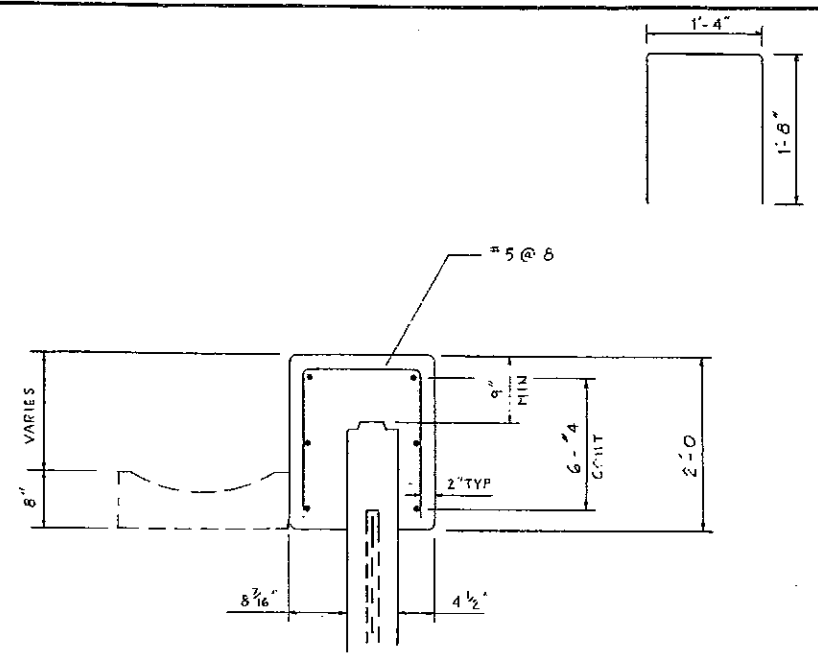
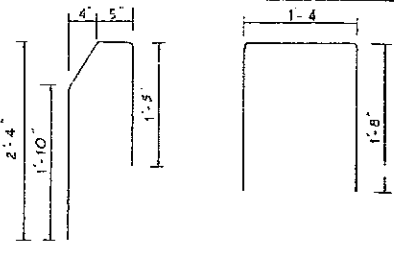
DES.	DRW.	CHK.	APP.	NO.	DATE	REVISION	BY
						Change coping note	
<b>RETAINED EARTH WALL TYPICAL DETAILS</b>							
<b>SR 189 PROVO CANYON UTAH</b>							
PROJECT NO F-019 (31)							
JOB NO 278-PB110							
2 of 17							



COPING DETAIL # 1  
BARRIER ON TCF



COPING DETAIL # 3  
BARRIER ON SIDE



COPING DETAIL # 2  
GUTTER

NO.	DATE	REVISION	BY

DES: **DRN** / **CHK** / **APP** / **INT**

**VSL Corporation**  
 1414 Fort & Pedcock  
 Dallas, TX 75240  
 Telephone: 214.641.0200  
 Telex: 735668

LOS ANGELES, CA / CHICAGO, IL / DALLAS, TX / DENVER, CO / HOUSTON, TX / MIAMI, FL / NEW YORK, NY / WASHINGTON, D.C.

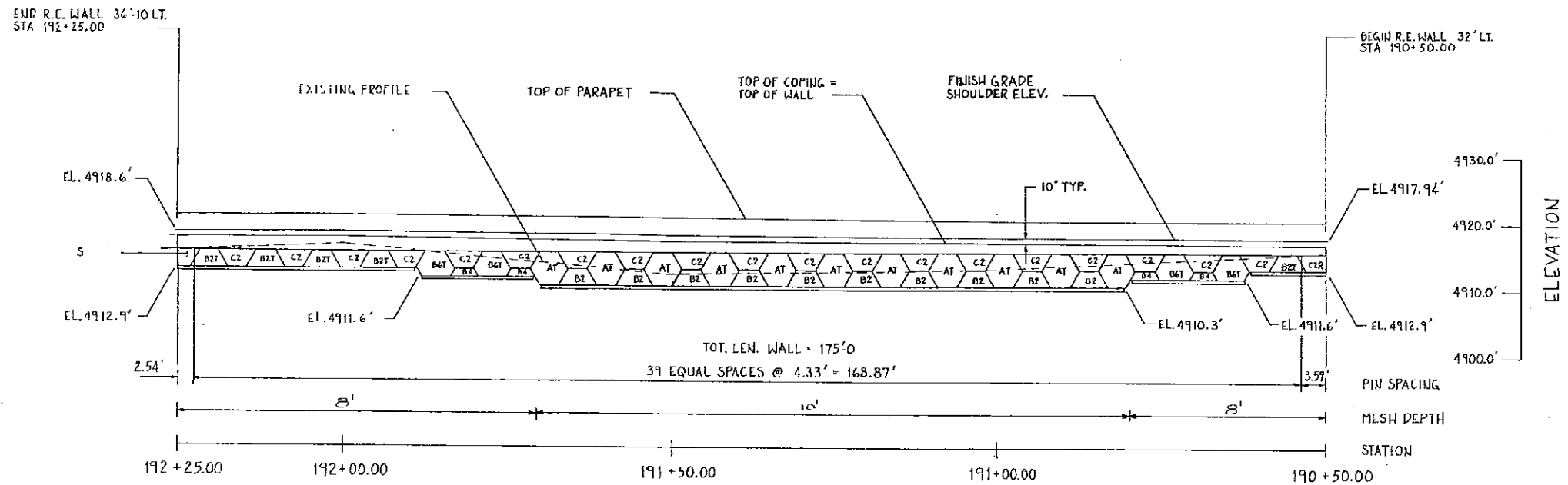
VSL Corporation ("VSL") retains all rights in the design, location and construction of the barrier shown on this sheet. The use of this design in any other project without the written consent of VSL is prohibited. VSL makes no warranty, express or implied, for the use of this design in any other project. VSL DISCLAIMS ANY LIABILITY HEREIN.

COPING DETAILS  
 SR 189  
 PROVO CANYON, UTAH

Project No.  
 F-019(31)

JOB NO: 27E-PB-11C

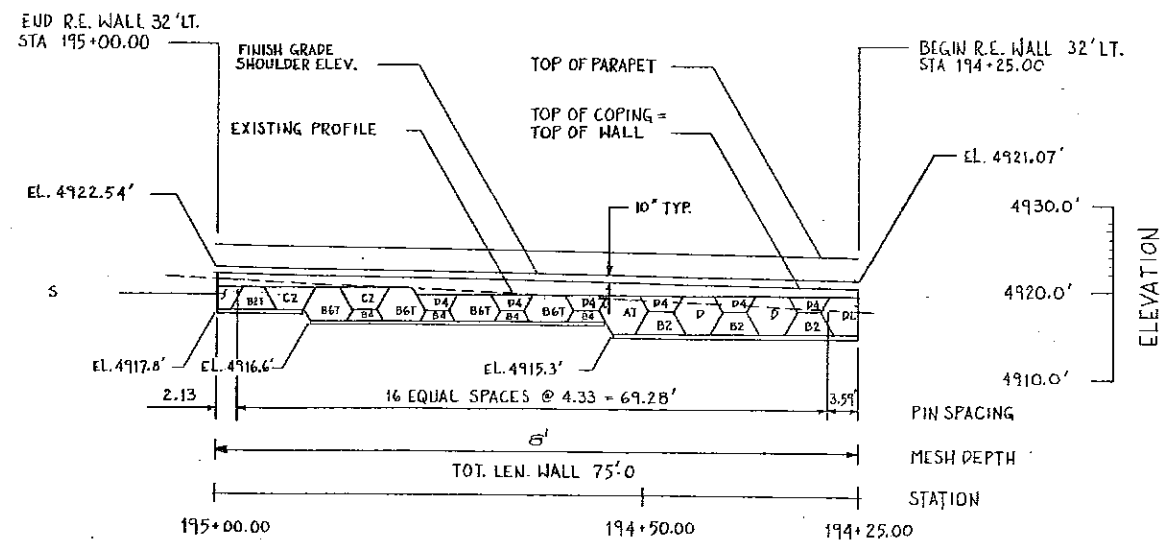
PROVO CANYON  
RETAINED EARTH WALL \*1 R-125



ELEVATIONS @ TOP OF WALL

R.E. WALL *1 (R-125)		R.E. WALL *2 (R-126)	
STA. 190+50.00	EL. 4917.11	STA. 194+25.00	EL. 4920.24
STA. 191+00.00	EL. 4917.29	STA. 194+50.00	EL. 4920.53
STA. 191+50.00	EL. 4917.38	STA. 195+00.00	EL. 4921.71
STA. 192+00.00	EL. 4917.58		
STA. 192+25.00	EL. 4917.77		

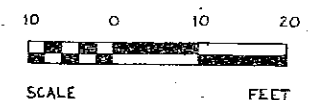
RETAINED EARTH WALL \*2 (R-126)



GENERAL NOTES

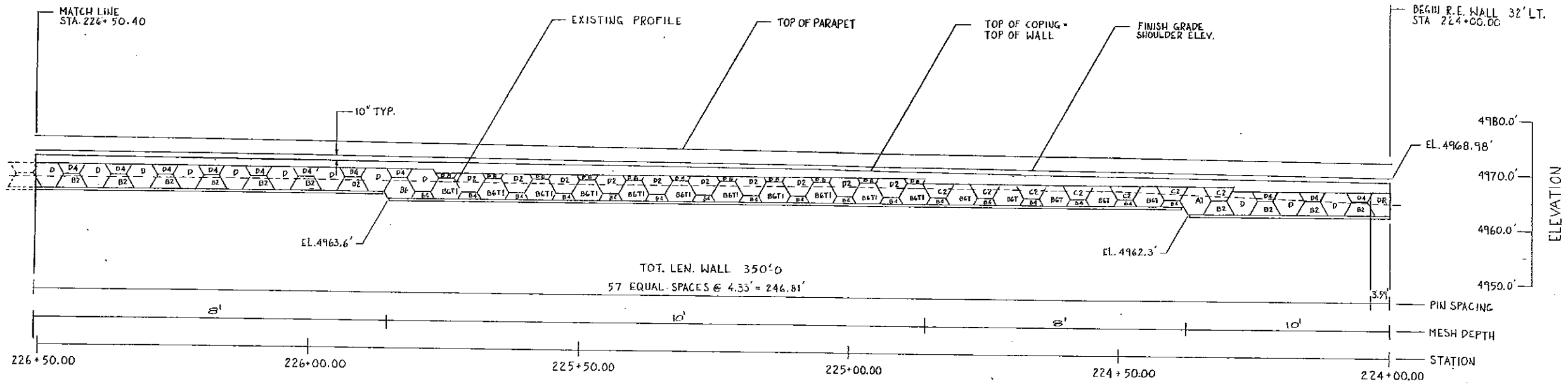
1. RETAINED EARTH WALL PANELS SHALL BE SCOTT SYSTEM PHOENIX LIMESTONE FINISH
2. PANELS DESIGNATED "R" OR "L" INDICATE VERTICAL EDGE OF PANEL AS VIEWED FRONT FACE. REFER TO PANEL SCHEDULE "Sht 2" FOR DIMENSIONS.
3. WIRE MESH IS DESIGNATED BY  $\square$  SYMBOL ON THE WALL ELEVATIONS. EXAMPLE:  $\square$  INDICATES 4 LONGITUDINAL WIRES  $\frac{3}{8}$ " WITH  $\frac{3}{8}$ " CROSSWIRES AT 2'-0".
4. ALL WALLS ARE SHOWN FRONT FACE. NOTE STATIONING.
5. TOP OF WALL SHALL BE EQUAL TO TOP OF COPING UNLESS OTHERWISE NOTED.
6. FOR SPECIAL PANEL DIMENSIONS REFER TO SHEET "Sht 2".
7. FOR EXPLANATION OF PANEL CODING SEE DETAIL SHEET "Sht 2".
8. FOR TYPICAL PANEL DIMENSIONS REFER TO SHEET "Sht 2".
9. ALL REINFORCING STEEL SHALL BE GRADE 60 EPOXY COATED.
10. COPING JOINTS SHALL BE PLACED EVERY 10' FEET
11. BASE ELEVATIONS SHOWN ARE AT TOP OF LEVELING PAD.

CERTIFIED WITH RESPECT TO INTERNAL STABILITY OF RETAINED EARTH STRUCTURES ONLY.



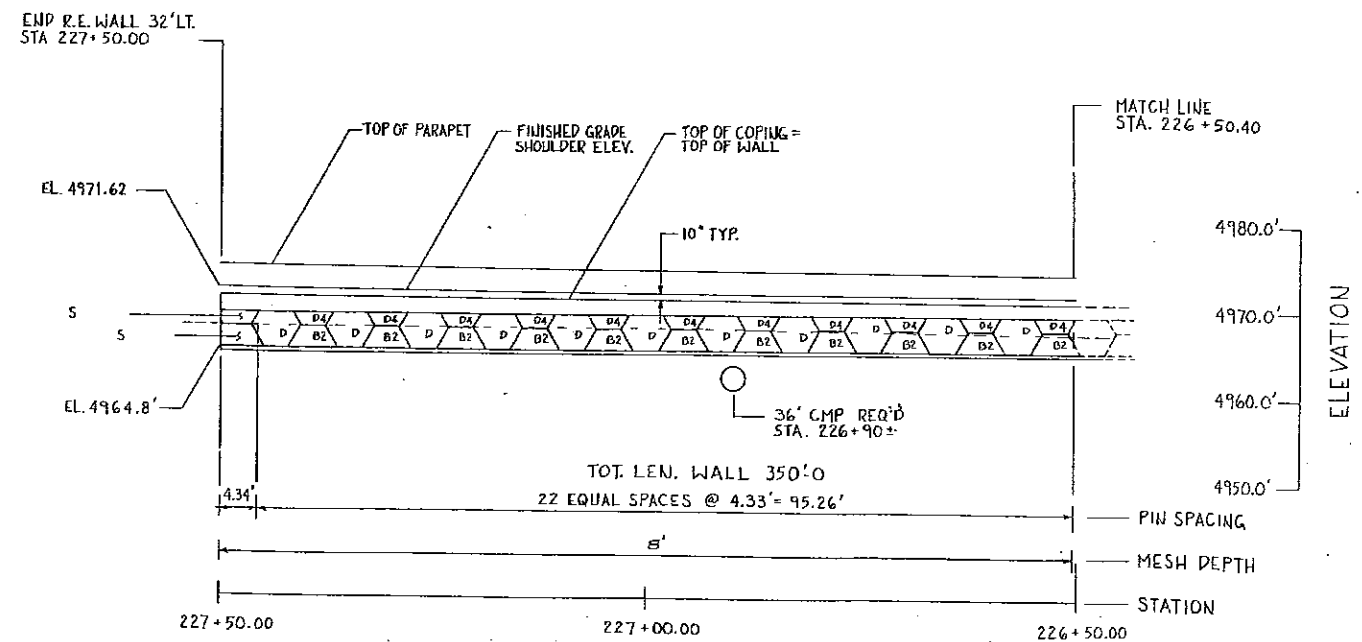
DES.	DRN.	CHK.	DATE	NO.	DATE	BY
VSL Corporation LOS ANGELES, CA / CHICAGO, IL / DALLAS, TX / DENVER, CO / HOUSTON, TX / INDIANAPOLIS, IN / HOUSTON, TX / LOS ANGELES, CA / MIAMI, FL / NEW YORK, NY / WASHINGTON, D.C.						
RETAINED EARTH WALLS RW1 & RW2 STA 190+50.00 THRU STA 195+00.00						
SR 189 PROVO CANYON, UTAH						
PROJECT NO. F-019 (31)						
JOB NO: PB-110						
4 of 17						

PROVO CANYON  
RETAINED EARTH WALL \* 3 R-127



ELEVATIONS @ TOP OF WALL

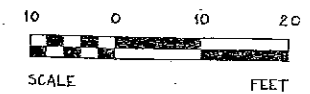
STA. 224+00.00	EL. 4968.15
STA. 224+50.00	EL. 4968.73
STA. 225+00.00	EL. 4969.28
STA. 225+50.00	EL. 4969.78
STA. 226+00.00	EL. 4970.16
STA. 226+50.00	EL. 4970.39
STA. 227+00.00	EL. 4970.60
STA. 227+50.00	EL. 4970.79



NOTES

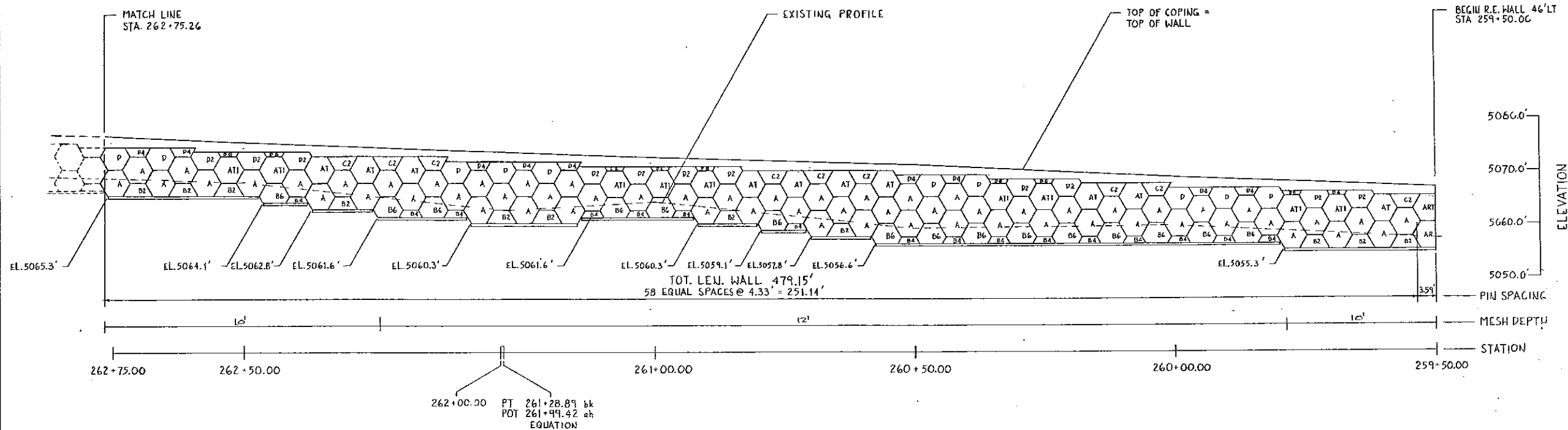
1. FOR GENERAL NOTES SEE SHEET 4

CERTIFIED WITH RESPECT TO INTERNAL STABILITY OF RETAINED EARTH STRUCTURES ONLY.



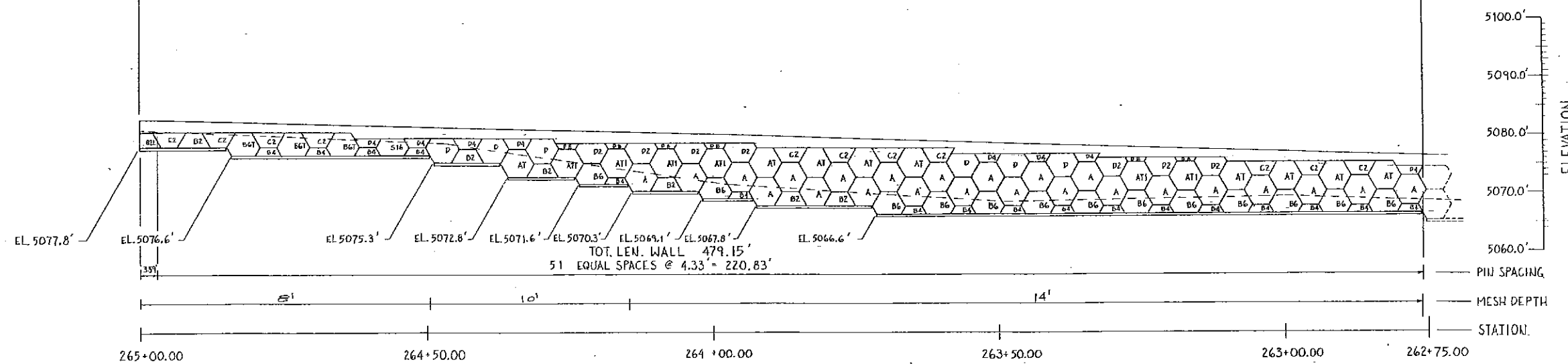
DES.	DRN	CHK	DATE	BY
VSL Corporation (VSL) is a leading provider of geotechnical engineering and construction services. The company is a subsidiary of VSL Industries, a public company listed on the New York Stock Exchange (NYSE: VSL). VSL Corporation is headquartered in Houston, Texas, and has offices in Los Angeles, California; Dallas, Texas; Denver, Colorado; Honolulu, Hawaii; and New York, New York.				
PROJECT NO. F-019 (31)				
JOB NO: PB-110				
5 of 17				

PROVO CANYON  
RETAINED EARTH WALL \* 4  
R-128



END R.E. WALL 46 LT.  
STA. 264+99.68  
(CONT. ON SHT. 2 of 2)

MATCH LINE  
STA. 262+75.26



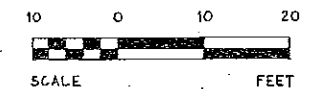
ELEVATIONS @ TOP OF WALL

STA. 259+50.00	EL. 5067.02'
STA. 260+00.00	EL. 5069.19'
STA. 261+00.00	EL. 5072.90'
STA. 261+99.42	EL. 5073.98'
STA. 263+00.00	EL. 5077.47'
STA. 264+00.00	EL. 5080.51'
STA. 264+99.68	EL. 5082.94'

NOTES

1. FOR GENERAL NOTES SEE SHEET 4

CERTIFIED WITH RESPECT TO INTERNAL  
STABILITY OF RETAINED EARTH  
STRUCTURES ONLY.



DES.	DRN.	CHK.	DATE	NO.	BY

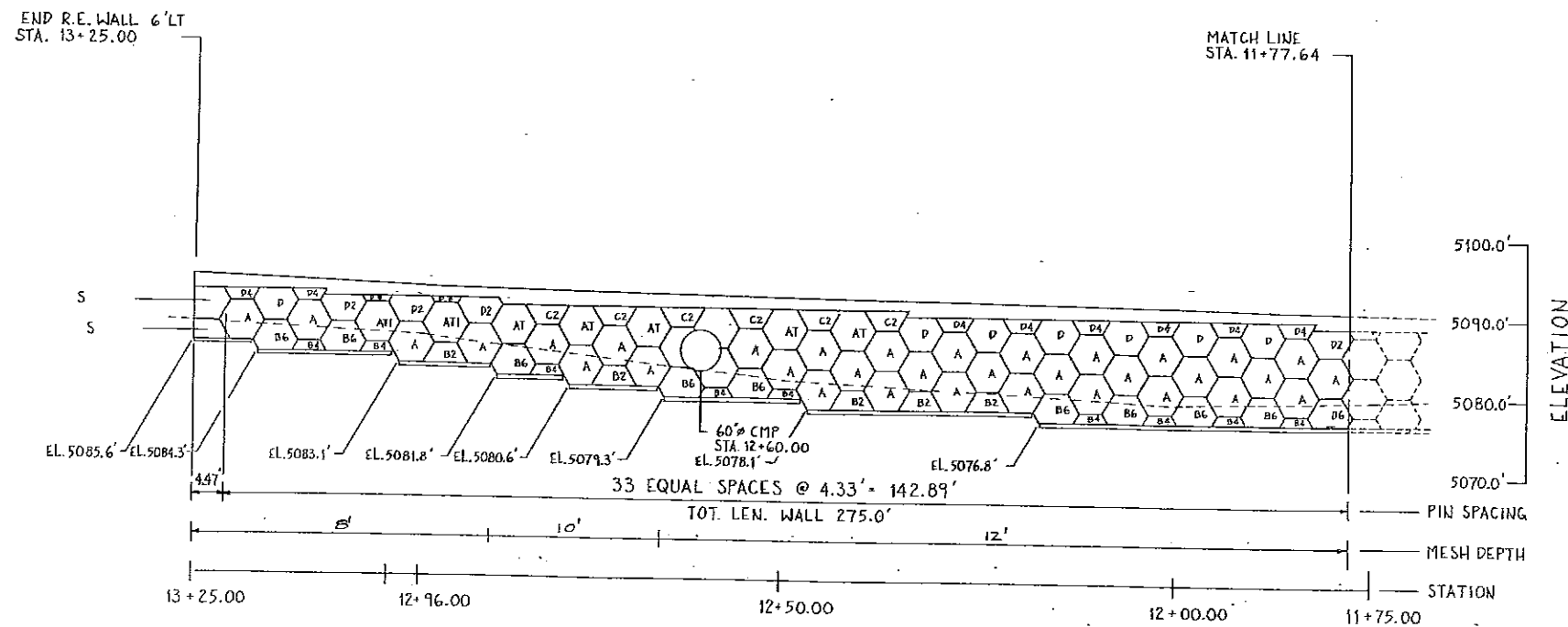
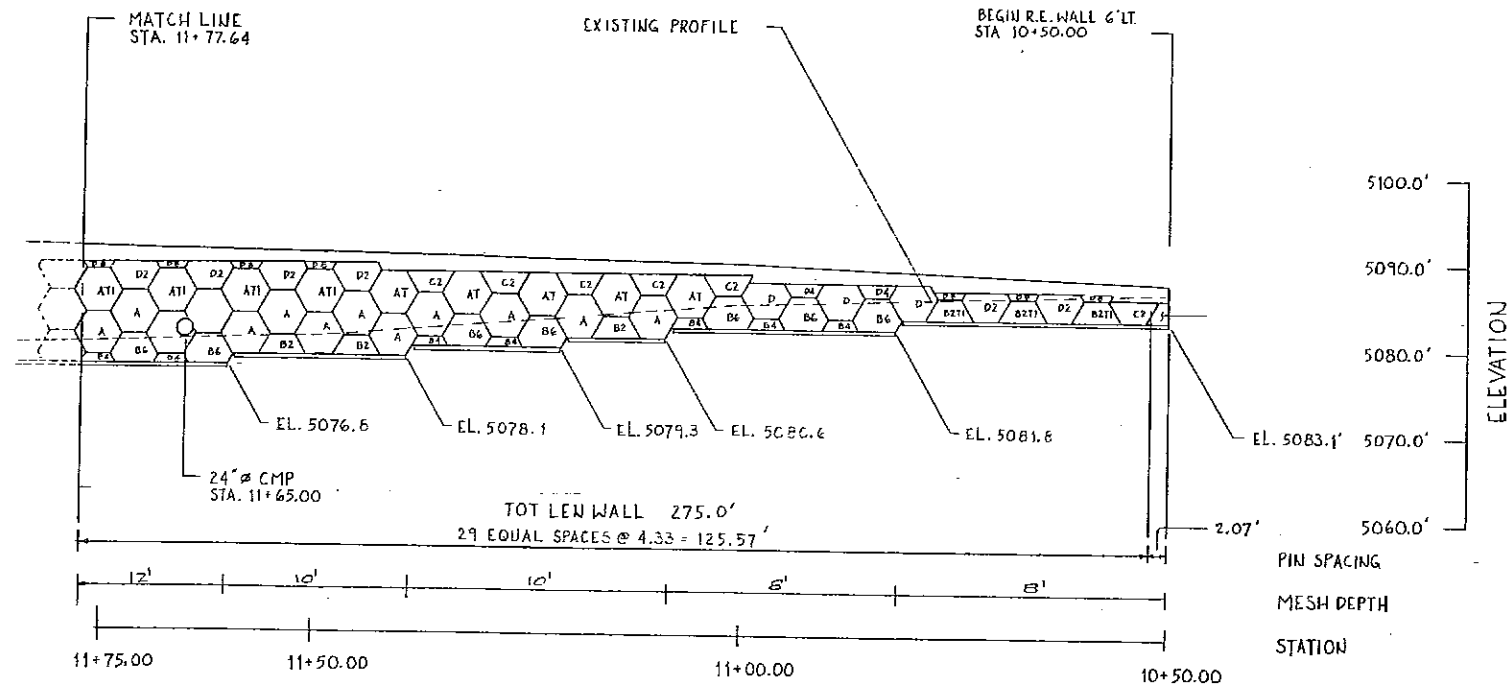
**VSL Corporation**  
 LOS ANGELES, CA / CHICAGO, IL / DALLAS, TX / DENVER, CO / HOUSTON, TX  
 LOS ANGELES, CA / MIAMI, FL / NEW YORK, NY / PHOENIX, AZ  
 SAN FRANCISCO, CA / SEATTLE, WA / TAMPA, FL / WASHINGTON, DC

VSL Corporation ("VSL")  
 certifies that the design and  
 construction of the structure  
 shown on this sheet is in  
 accordance with the design  
 and construction standards  
 set forth in the VSL Design  
 Manual, VSL Design Manual  
 for Retained Earth Structures,  
 1998 Edition, and any  
 subsequent editions thereof.

RETAINED EARTH WALL RW4  
 STA 259+50.00 TO STA 265+00.00  
 SR 189  
 PROVO CANYON, UTAH

PROJECT NO.  
F-019 (31)  
 JOB NO: PB-110  
 6 of 17

RETAINED EARTH WALL \* 4  
(CON.T.)  
R-128

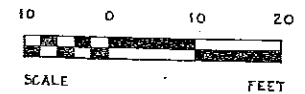


ELEVATIONS @ TOP OF WALL

STA. 10+50.00	EL. 5087.36
STA. 11+00.00	EL. 5089.20
STA. 12+00.00	EL. 5091.13
STA. 12+96.00	EL. 5092.70
STA. 13+25.00	EL. 5094.01

NOTES  
1. FOR GENERAL NOTES SEE SHEET 4

CERTIFIED WITH RESPECT TO INTERNAL STABILITY OF RETAINED EARTH STRUCTURES ONLY.



VSL Corporation ("VSL") is a registered trademark of VSL Limited. The use of VSL Corporation ("VSL") in the name of a project or in any other manner does not constitute an endorsement or approval of the project by VSL. VSL is not responsible for any errors or omissions in this drawing and shall not be held liable for any consequences arising from the use of this drawing. VSL Corporation ("VSL") is a registered trademark of VSL Limited.

DES.	DRN.	CHK.	NO.	DATE
	F. B. G.	J. W. G.		

VSL Corporation  
 1142 Pitt & Radlock  
 Telephone: 214/977-0200  
 Telex: 335666

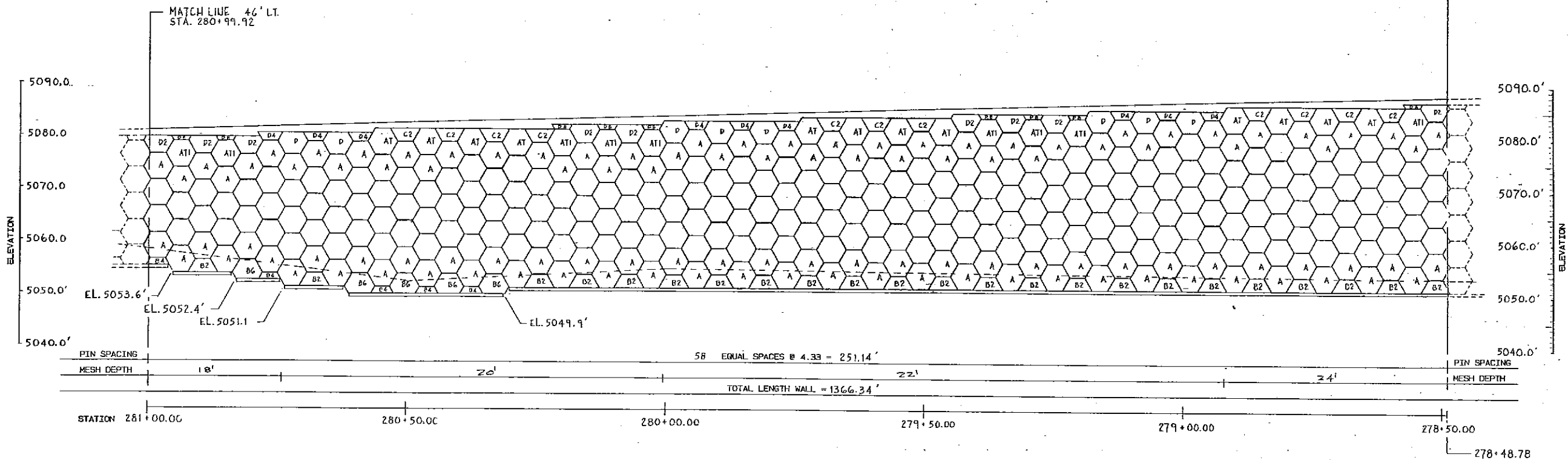
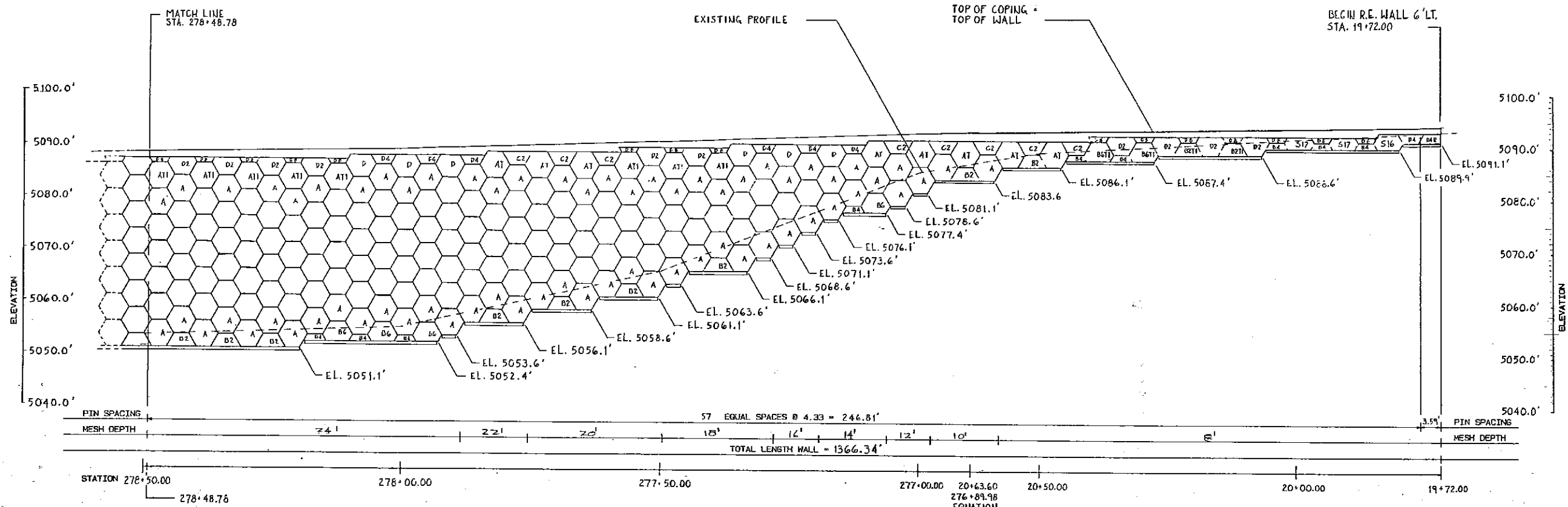
LOS ANGELES, CA / CHICAGO, IL / DALLAS, TX / DENVER, CO / HONOLULU, HI  
 HOUSTON, TX / LOS ANGELES, CA / MIAMI, FL / NEW YORK, NY / WASHINGTON, D.C.

RETAINED EARTH WALL RW4  
 STA 10+50.00 TO STA 13+25.00  
 SR 189  
 PROVO CANYON, UTAH

PROJECT NO.  
F-019 (31)

JOB NO: PB-110

7 of 17



**RETAINED EARTH WALL RW-5**  
R-129

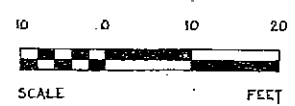
**ELEVATIONS @ TOP OF WALL**

STA 19+72	EL 5094.08	STA 278+00	EL 5089.24
STA 20+00	EL 5093.71	STA 279+00	EL 5087.00
STA 276+89.98	EL 5092.86	STA 280+00	EL 5084.01

**NOTES**

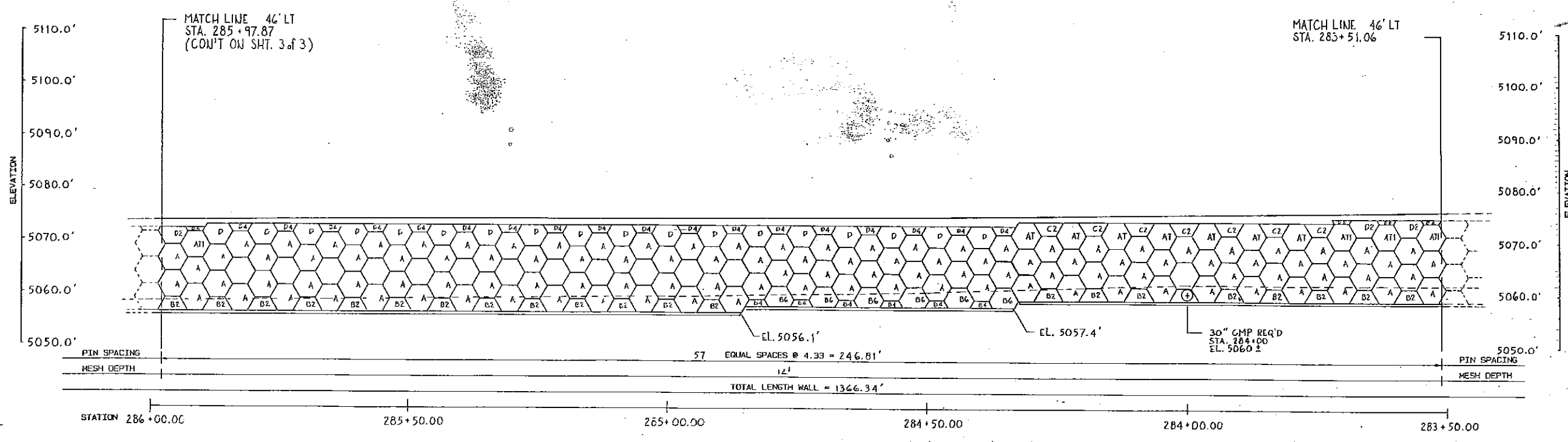
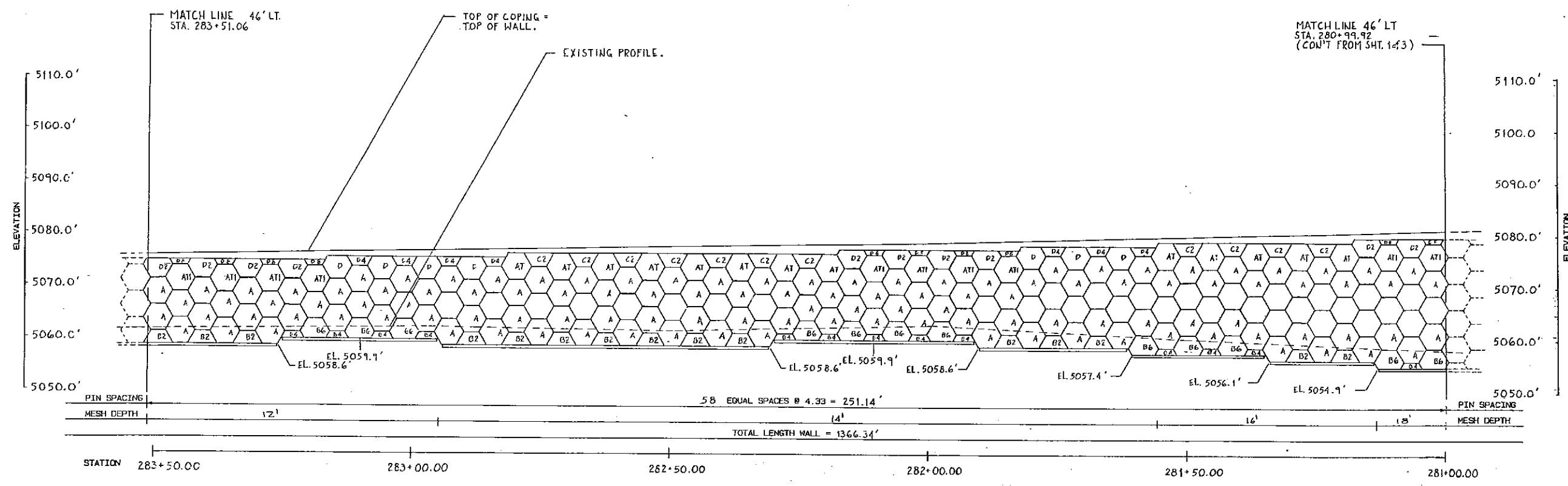
1. FOR GENERAL NOTES SEE SHEET 4

CERTIFIED WITH RESPECT TO INTERNAL STABILITY OF RETAINED EARTH STRUCTURES ONLY



DES: [Signature]		NO. DATE	REVISION
DRN: [Signature]			
CHK: [Signature]			
VSL Corporation 1910 West 10th Street Suite 100 Provo, UT 84601 Phone: 801-734-7000 Fax: 801-734-7001 Email: info@vsl.com			
RETAINED EARTH WALL RW 5 STA 19+72.00 TO STA 280+99.92 SR 189 PROVO CANYON, UTAH			
PROJECT NO. F-019 (31)			
JOB NO: PB-110			
8 of 17			





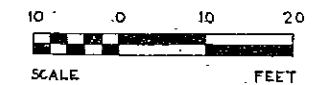
**ELEVATIONS @ TOP OF WALL**

STA 281+00	EL 5081.04	STA 284+00	EL 5075.16
STA 282+00	EL 5078.58	STA 285+00	EL 5074.19
STA 283+00	EL 5076.62	STA 286+00	EL 5073.92

**NOTES**

- 1. FOR GENERAL NOTES SEE SHEET 4

CERTIFIED WITH RESPECT TO INTERNAL STABILITY OF RETAINED EARTH STRUCTURES ONLY



DES.	DRN.	CHK.	DATE	NO.	BY
<b>RETAINED EARTH WALL RW-5</b> STA 280+99.92 TO STA 285+97.87					
SR 189 PROVO CANYON, UTAH					
PROJECT NO. F-019 (31)					
JOB NO. 278-PB110					
9 of 17					

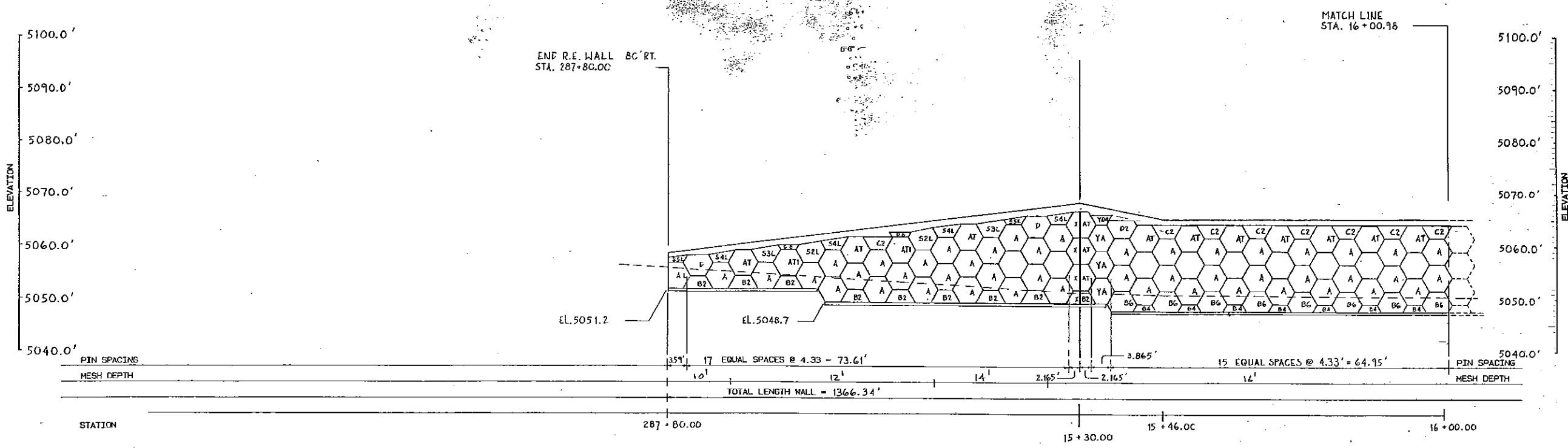
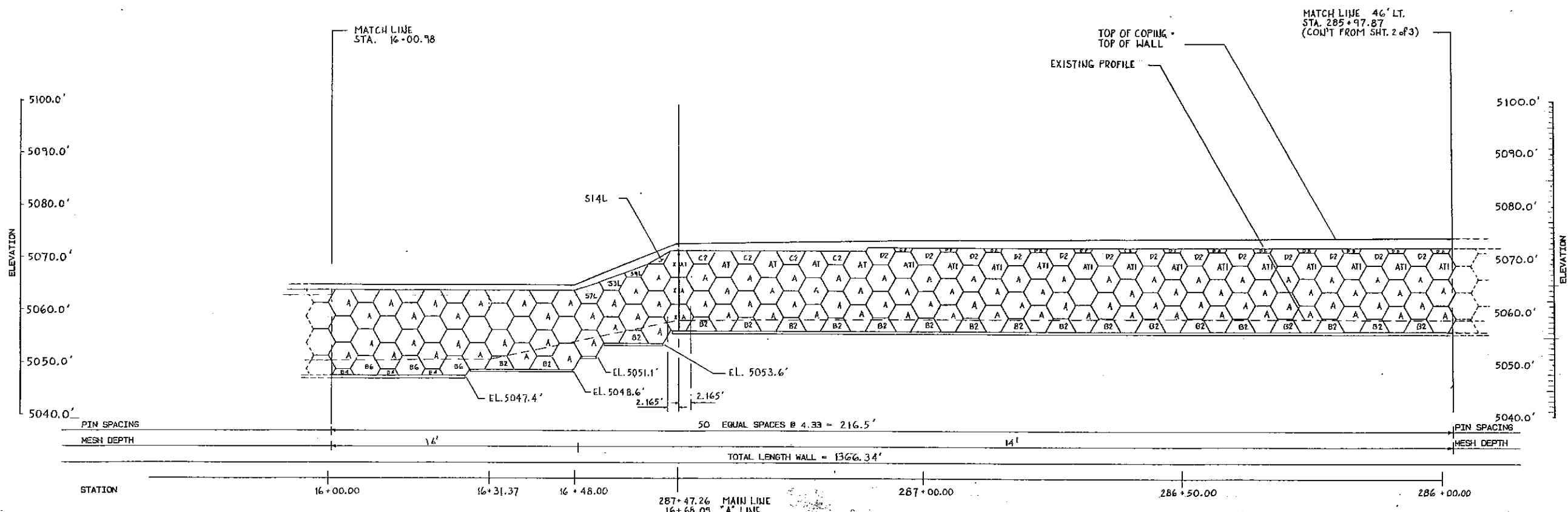
DES.	DRN	CHK	BY
NO. DATE			REVISION
NO. DATE			REVISION

**VSL Corporation**  
 1514 West 8th Street, Suite 200  
 Los Angeles, CA 90048  
 Dallas, TX 75201  
 Denver, CO 80202  
 Houston, TX 77002  
 New York, NY 10001  
 Provo, UT 84601  
 Washington, DC 20004

PROJECT NO.  
F-019 (31)

JOB NO:  
27B-PB110

10 of 17



**RETAINED EARTH WALL RW-5**

R-129

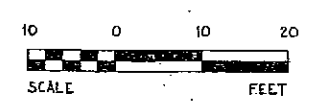
**ELEVATIONS @ TOP OF WALL**

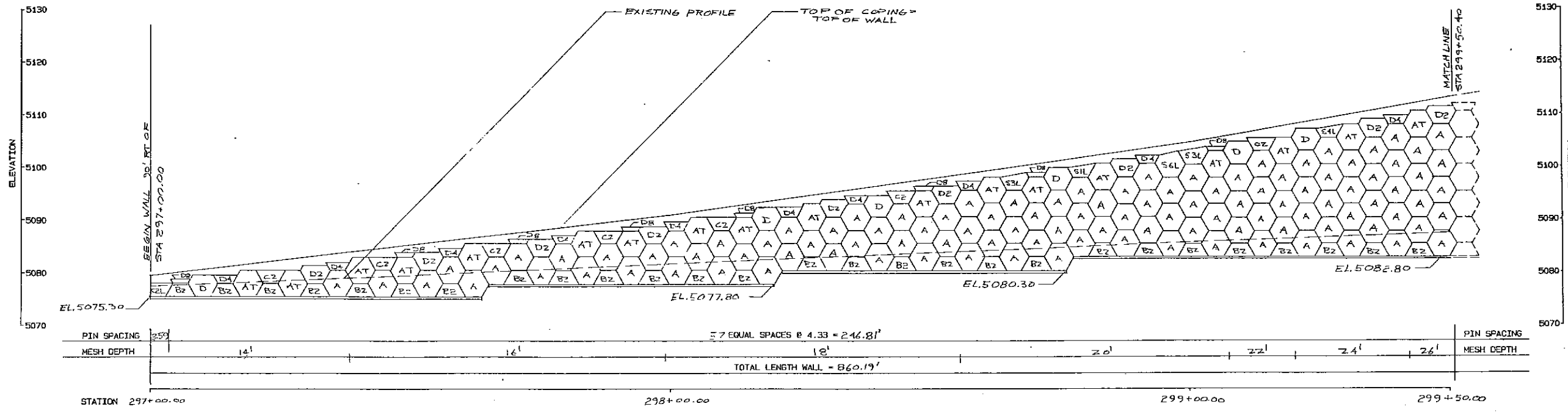
STA 286+00	EL 5073.92	STA 16+48	EL 5064.90
STA 287+00	EL 5073.76	STA 15+46	EL 5065.20
STA 287+47.26	EL 5072.75	STA 287+80	EL 5058.60

**NOTES**

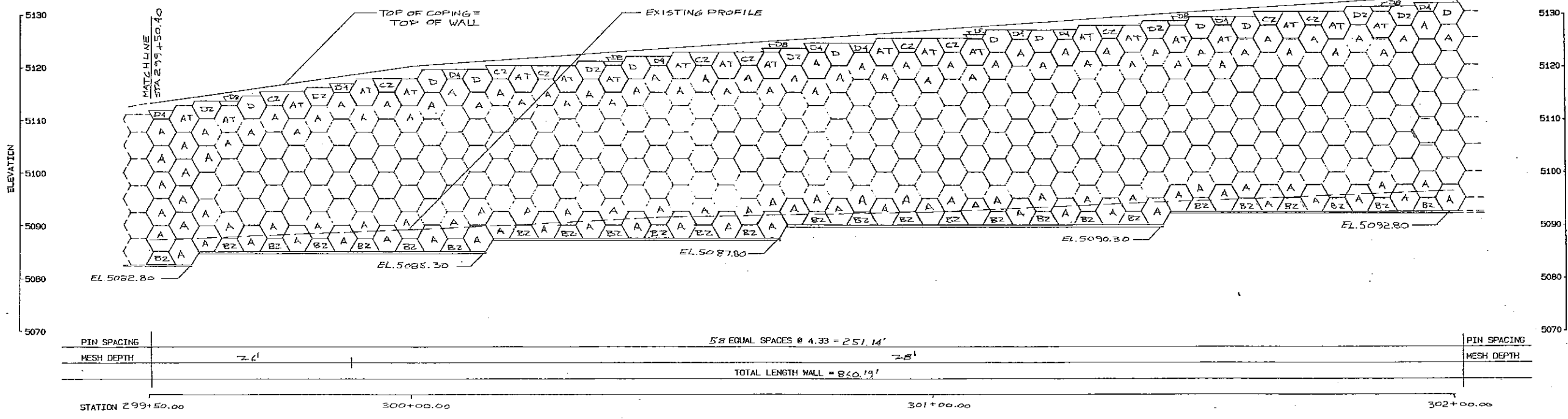
- FOR GENERAL NOTES SEE SHEET 4

CERTIFIED WITH RESPECT TO INTERNAL STABILITY OF RETAINED EARTH STRUCTURES ONLY





RETAINED EARTH WALL RW-6  
R-130



RETAINED EARTH WALL RW-6  
R-130

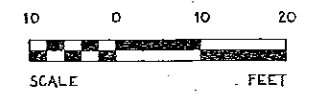
ELEVATIONS @ TOP OF WALL

STA 297+00	EL 5079.30	STA 300+00	EL 5118.54
STA 298+00	EL 5090.74	STA 301+00	EL 5126.41
STA 299+00	EL 5104.76	STA 302+00	EL 5133.18

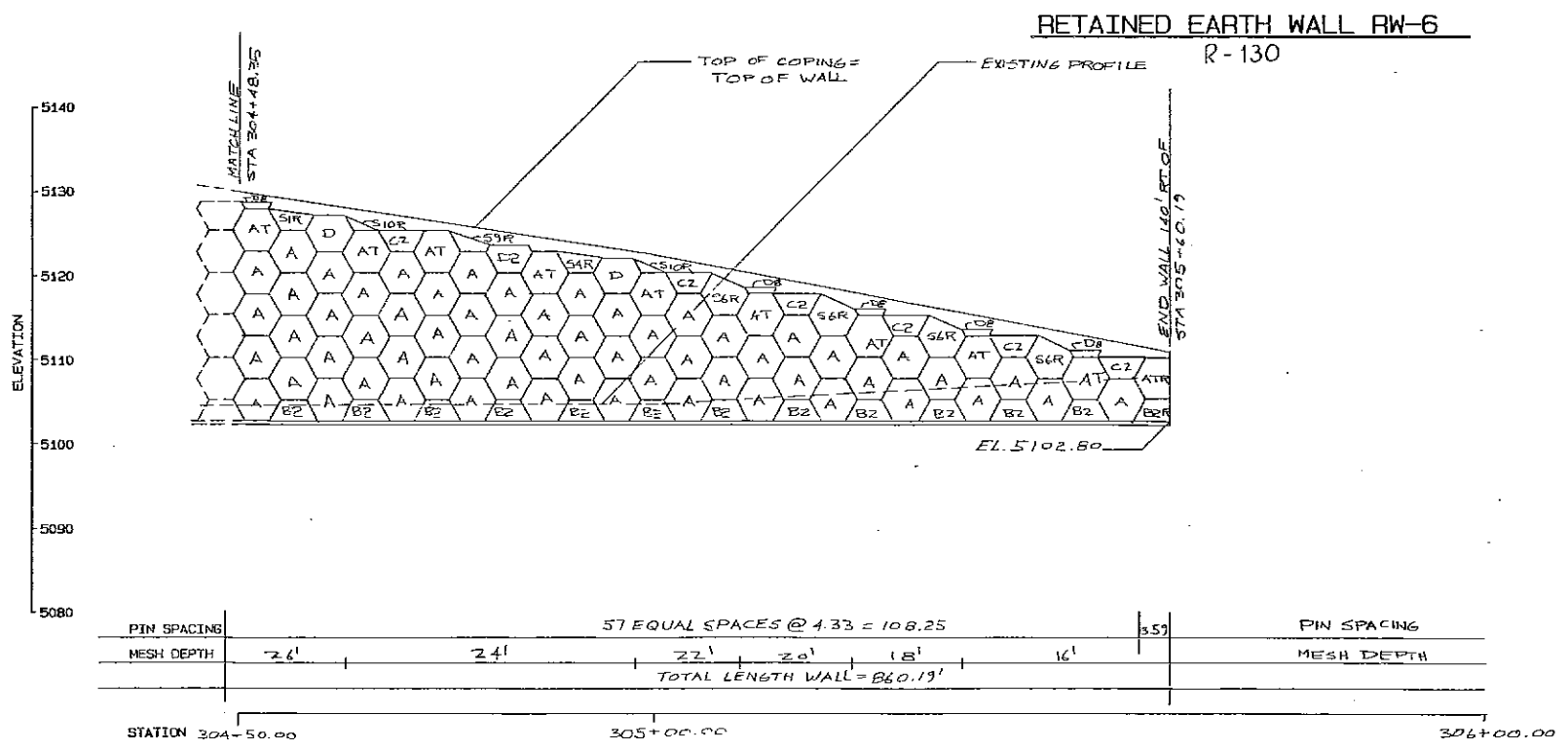
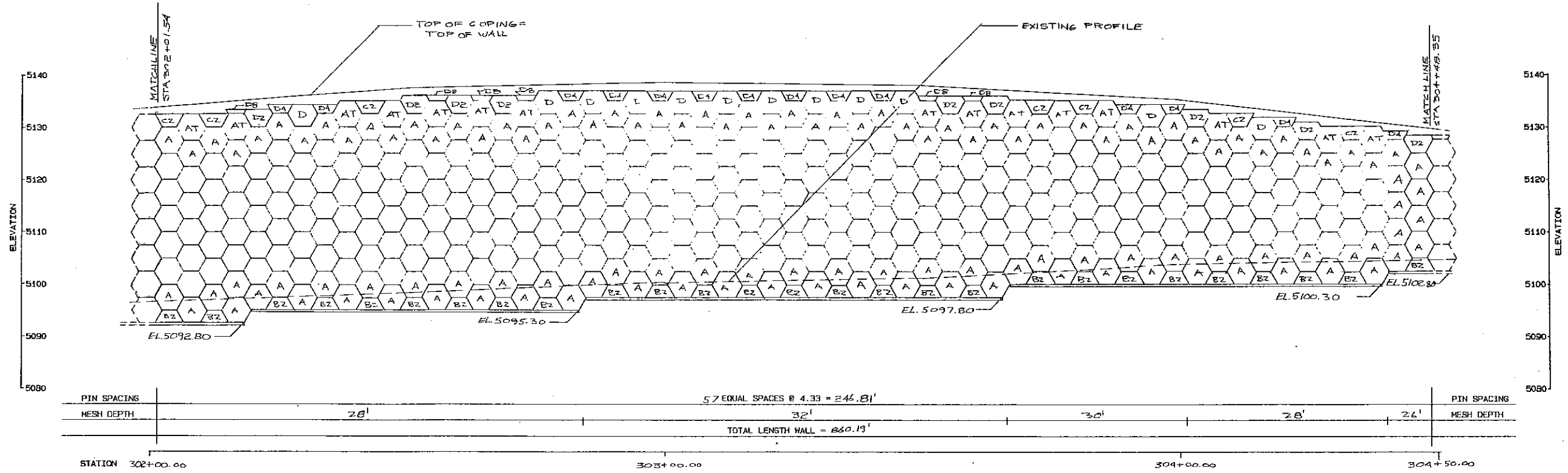
NOTES

1. FOR GENERAL NOTES SEE SHEET 4

CERTIFIED WITH RESPECT TO INTERNAL STABILITY OF RETAINED EARTH STRUCTURES ONLY



DES.	CHK.	NO.	DATE	REVISION	BY
<p>RETAINED EARTH WALL RW-6 STA 297+00 TO STA 302+01.54</p>					
<p>SR 189 PROVO CANYON, UTAH</p>					
<p>PROJECT NO. F-019 (31)</p>					
<p>JOB NO: 278-FB110</p>					
<p>11 of 17</p>					

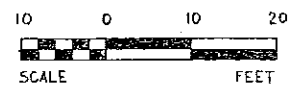


**ELEVATIONS @ TOP OF WALL**

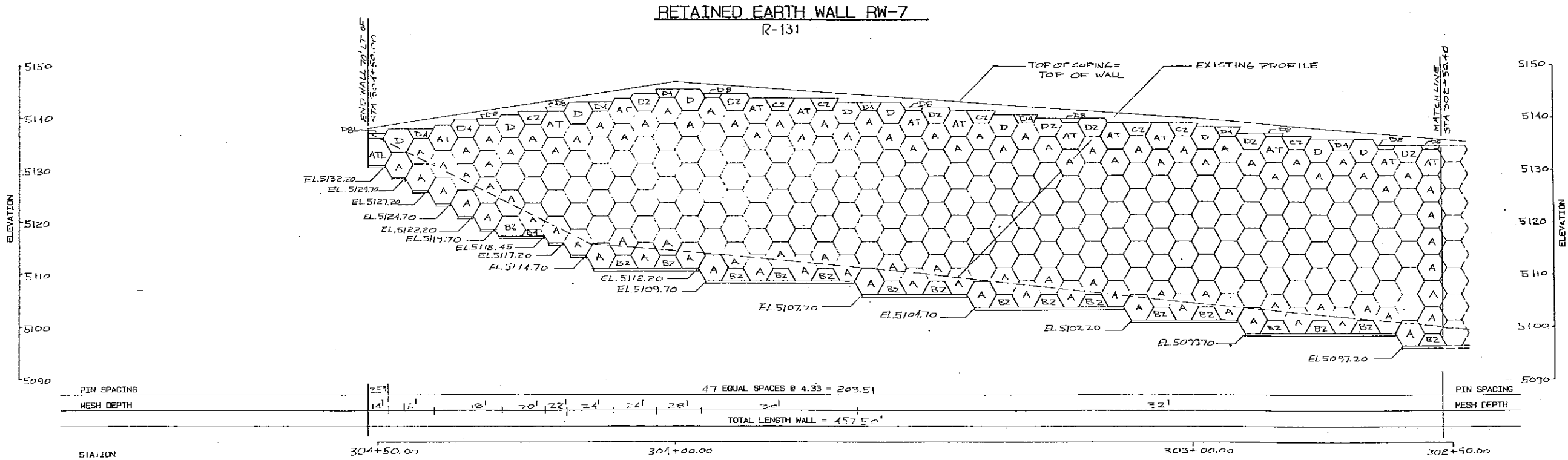
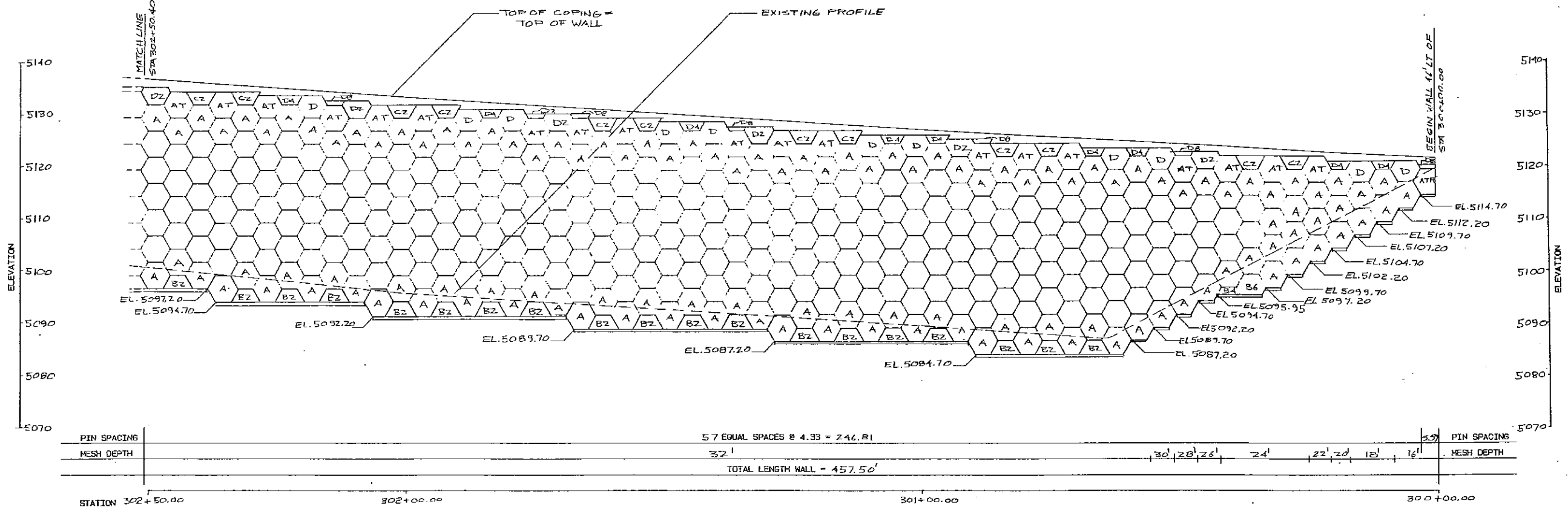
STA 302+00	EL 5133.18	STA 305+00	EL 5122.16
STA 303+00	EL 5138.62	STA 305+50	EL 5111.46
STA 304+00	EL 5135.39		

**NOTES**  
 1. FOR GENERAL NOTES SEE SHEET 4

CERTIFIED WITH RESPECT TO INTERNAL STABILITY OF RETAINED EARTH STRUCTURES ONLY



DES.	DRN.	CHK.	DATE	NO.	REVISION	BY	
<b>RETAINED EARTH WALL RW-6</b> STA 305+60 TO STA 305+60							
SR 189 PROVO CANYON, UTAH							
PROJECT NO. F-019 (31)							
JOB NO: 278-FB110							
12 of 17							



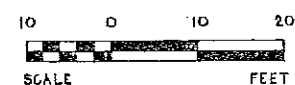
**ELEVATIONS @ TOP OF WALL**

STA 300+00	EL. 5121.55	STA 304+00	EL. 5146.71
STA 301+00	EL. 5126.87	STA 304+50	EL. 5138.10
STA 302+00	EL. 5133.17		
STA 303+00	EL. 5139.94		

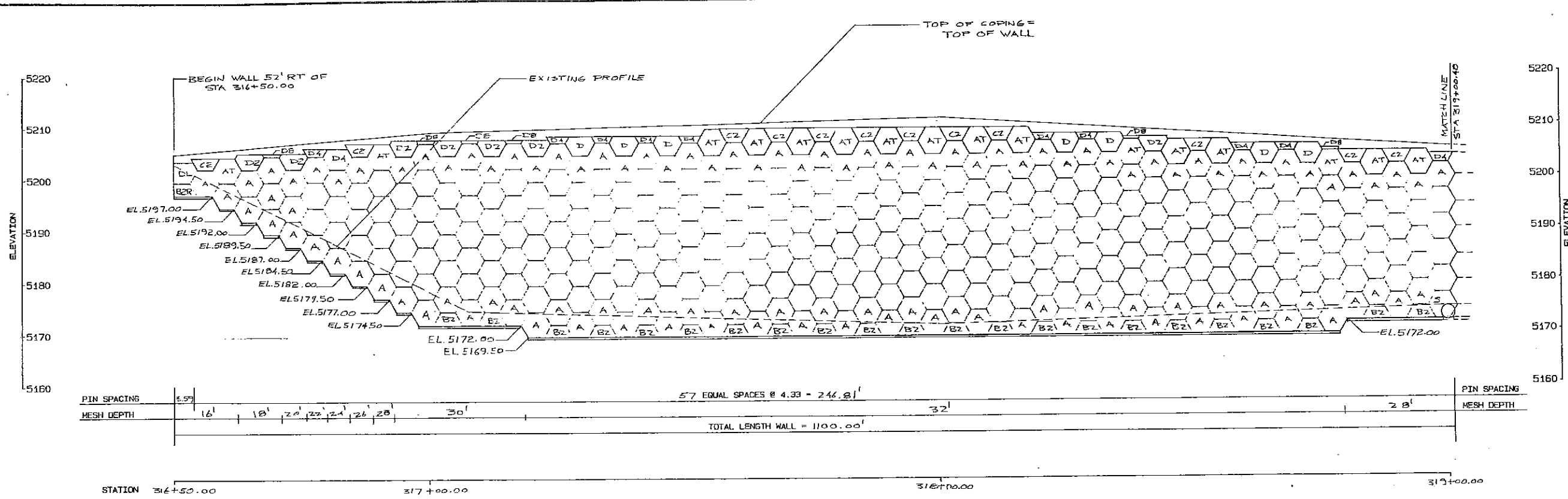
**NOTES**

1. FOR GENERAL NOTES SEE SHEET 4

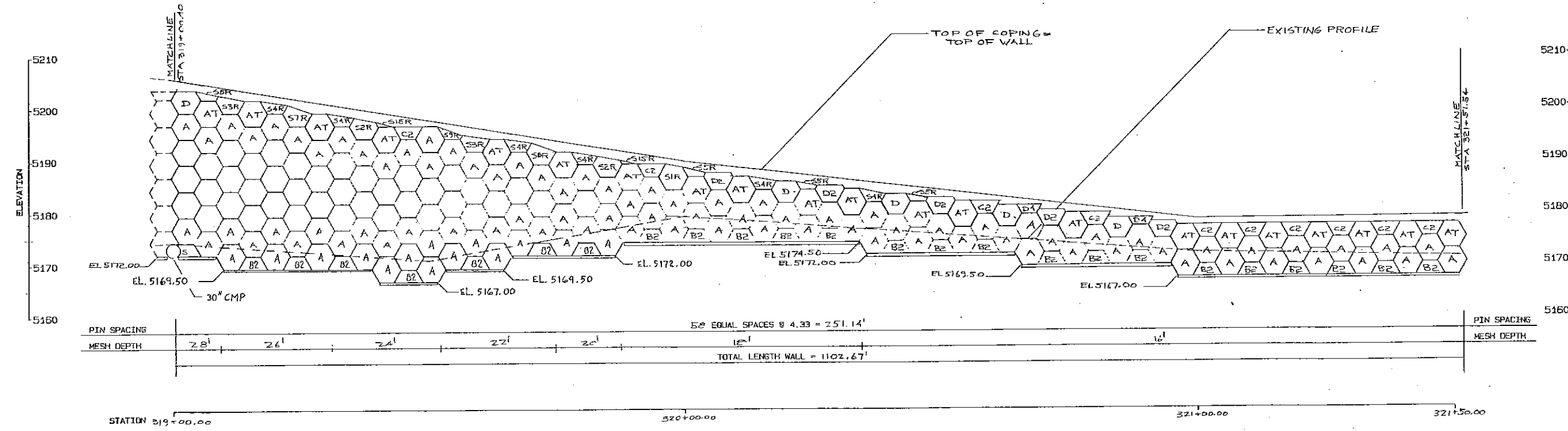
CERTIFIED WITH RESPECT TO INTERNAL STABILITY OF RETAINED EARTH STRUCTURES ONLY



DES.	DRILL	CHK.	DATE	BY
VSL Corporation Inc. 1414 Post & Packard Grand Prairie, Texas 75050 Houston, Texas 77060 Tel: 714/398-1000 Fax: 714/398-1001				
<b>RETAINED EARTH WALL RW-7</b> STA 300+00 TO STA 304+50				
SR 189 PROVO CANYON, UTAH				
PROJECT NO. F-019(31)				
JOB NO. 278-FR-110				
13 of 17				



**RETAINED EARTH WALL RW-8**  
R-132



**RETAINED EARTH WALL RW-8**  
R-132

**ELEVATIONS @ TOP OF WALL**

STA 316+50	EL 5205.03	STA 319+00	EL 5205.54
STA 317+00	EL 5208.85	STA 320+00	EL 5189.70
STA 318+00	EL 5211.69	STA 321+00	EL 5178.27

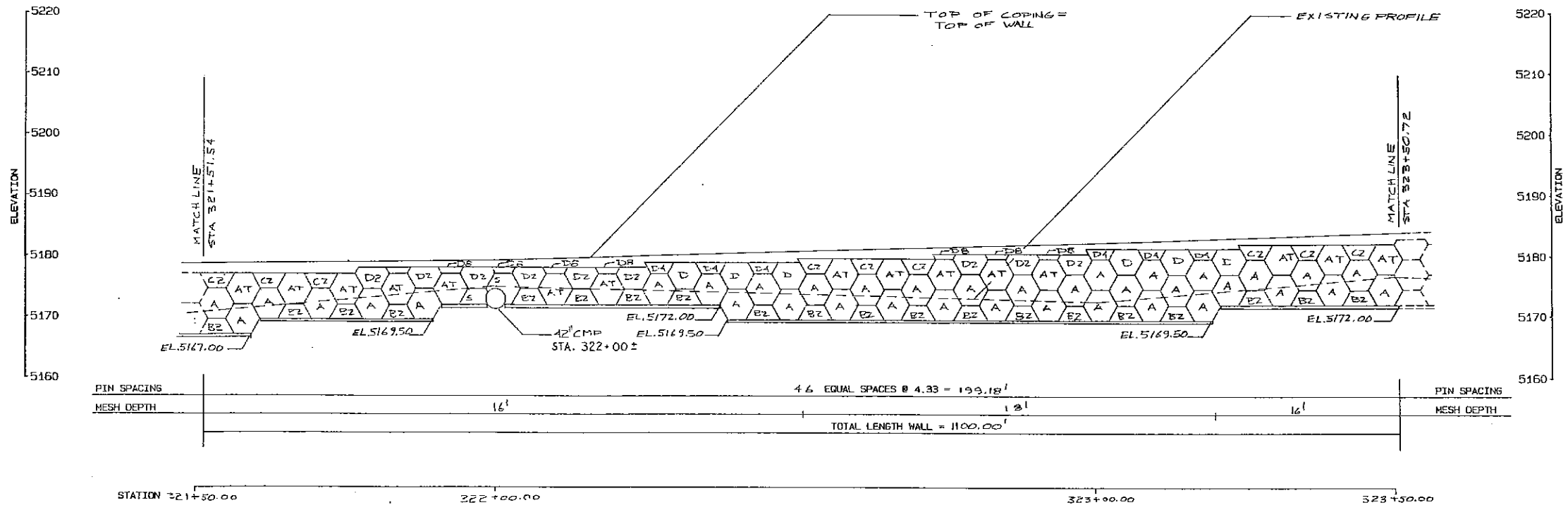
**NOTES**

- FOR GENERAL NOTES SEE SHEET 4

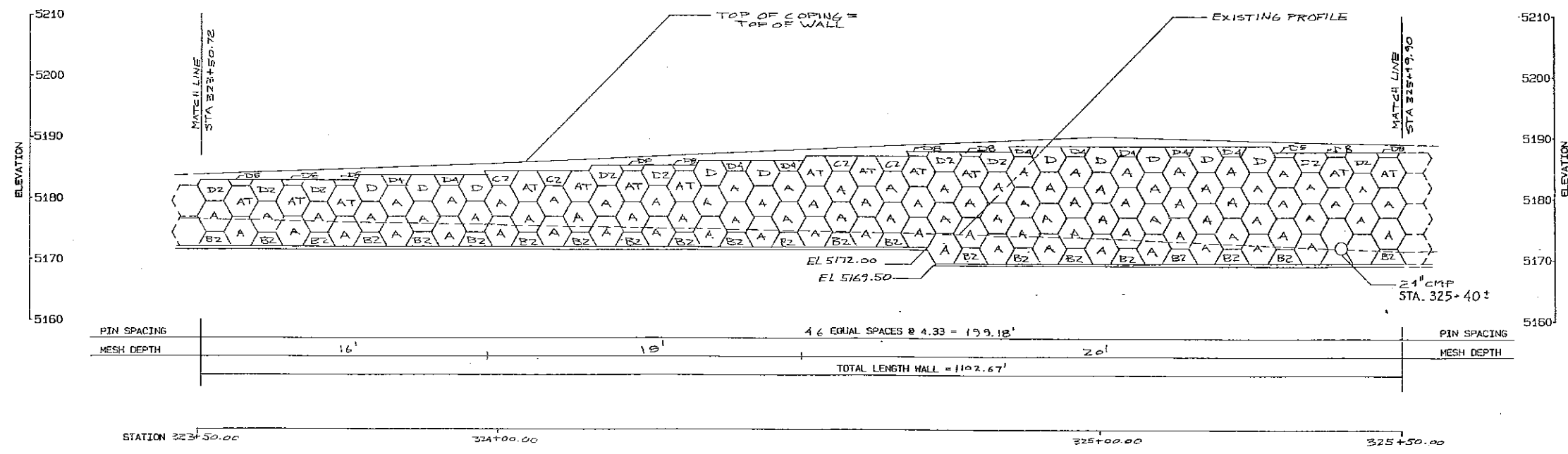


CERTIFIED WITH RESPECT TO INTERNAL STABILITY OF RETAINED EARTH STRUCTURES ONLY

DES.	DRN.	CHK.	POSTED/ISSUED	NO.	DATE	REVISION	BY
 <b>VSL Corporation</b> <small>VSL Corporation (US), Inc.          1414 Post &amp; Pedcock          Grand Prairie, Texas 75050          Tel: 972/392-1000          Telex: 720964</small>							
<small>VSL Corporation (US), Inc. is a registered professional engineering firm in the State of Texas. It is not to be used for any other purpose without the written consent of the State of Texas. Any other use is strictly prohibited. VSL Corporation (US), Inc. is not responsible for the design or construction of any structure. VSL Corporation (US), Inc. is not responsible for the design or construction of any structure.</small>							
<b>RETAINED EARTH WALL #8</b> <b>STA 316+50 TO STA 321+51.54</b> <b>SR 189</b> <b>PROVO CANYON UTAH</b>							
PROJECT NO. F-019 (31)							
JOB NO 278-PB110							
14 of 17							



RETAINED EARTH WALL RW-8  
R-132



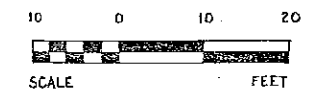
RETAINED EARTH WALL RW-8  
R-132

ELEVATIONS @ TOP OF WALL

STA 322+00	EL 5179.15	STA 324+00	EL 5185.45
STA 323+00	EL 5182.20	STA 325+00	EL 5190.19

NOTES

- FOR GENERAL NOTES SEE SHEET 4



CERTIFIED WITH RESPECT TO INTERNAL STABILITY OF RETAINED EARTH STRUCTURES ONLY

DES.	DRN.	CHK.	POSTED/ISSUED	NO.	DATE	REVISION	BY

1414 Paul & Padlock  
1000  
Houston, TX 77058  
Tel: 713/861-4200  
Fax: 713/861-4200

**VSL Corporation**

LOS ANGELES, CA / CHICAGO, IL / DENVER, CO / HONOLULU, HI  
HOUSTON, TX / LOS ANGELES, CA / MIAMI, FL / NEW YORK, NY / WASHINGTON, D.C.

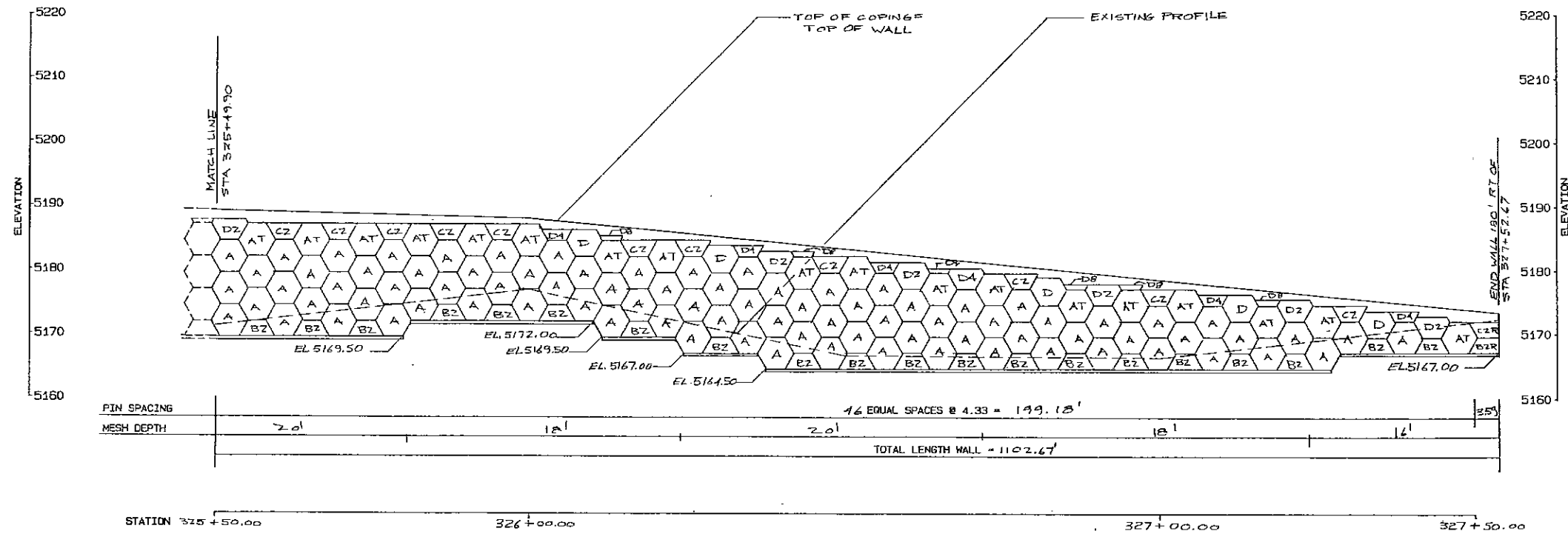
VSL Corporation (VSL) is a registered professional engineering firm in the State of Utah. VSL Corporation is not responsible for the design or construction of any structure unless it is specifically stated on the drawings. VSL Corporation is not responsible for the design or construction of any structure unless it is specifically stated on the drawings. VSL Corporation is not responsible for the design or construction of any structure unless it is specifically stated on the drawings.

RETAINED EARTH WALL #8  
STA 321+51.54 TO STA 325+49.90

SR 189  
PROVO CANYON UTAH

PROJECT NO. F-019 (31)

JOB NO: 278-PB110



**RETAINED EARTH WALL RW-8**  
R-132

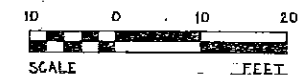
**ELEVATIONS @ TOP OF WALL**

STA 326+00	EL 5187.84	STA 327+50	EL 5173.90
STA 327+00	EL 5178.38		

**NOTES**

- FOR GENERAL NOTES SEE SHEET 4

CERTIFIED WITH RESPECT TO INTERNAL STABILITY OF RETAINED EARTH STRUCTURES ONLY



**RETAINED EARTH WALL #8**  
**STA 325+49.90 TO STA 327+50**  
**SR 189**  
**PROVO CANYON UTAH**

PROJECT NO.  
F-019 (31)

JOB NO 278-PB11D

16 of 17

**VSL Corporation**

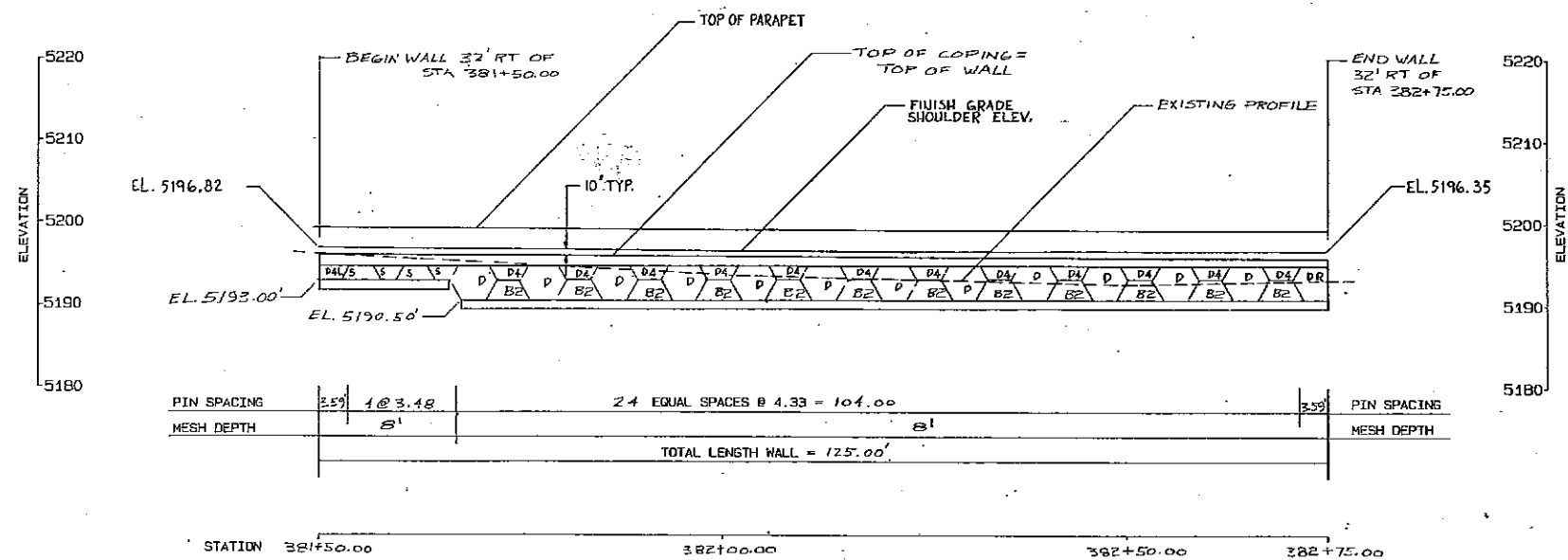
VSL Corporation (VSL) is a world leader in concrete repair, rehabilitation and maintenance services. The use of VSL products and services is a part of the VSL system. VSL products are used in a wide variety of applications and are available in many forms. VSL products are used in a wide variety of applications and are available in many forms. VSL products are used in a wide variety of applications and are available in many forms.

1414 1/2 St. Paul & Pacific, 7050  
Tampa, FL 33611  
Tel: 813-241-4141  
Fax: 813-241-4142

LOS ANGELES, CA / CHICAGO, IL / DALLAS, TX / DENVER, CO / HONOLULU, HI  
HOUSTON, TX / LOS ANGELES, CA / MIAMI, FL / NEW YORK, NY / WASHINGTON, D.C.

DES.	DRN.	CHK.	NO.	DATE	REVISION	BY





PIN SPACING	3.59'	1 @ 3.48'	24 EQUAL SPACES @ 4.33' = 104.00'	3.59'	PIN SPACING
MESH DEPTH		8'			MESH DEPTH
TOTAL LENGTH WALL = 125.00'					

**RETAINED EARTH WALL RW-9**  
R-133

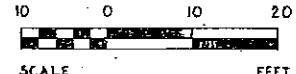
ELEVATIONS @ TOP OF WALL

STA 381+50	EL 5195.99
STA 382+00	EL 5195.73
STA 382+75	EL 5195.52

NOTES

- FOR GENERAL NOTES SEE SHEET 4

CERTIFIED WITH RESPECT TO INTERNAL STABILITY OF RETAINED EARTH STRUCTURES ONLY



DES.	
DRN.	JF
CHK.	
POSTED/ISSUED	
NO.	
DATE	
REVISION	
BY	

1414 First & Popple  
Grand Rapids, MI 49506  
Tel: 616-947-0000  
Fax: 616-947-0000

**VSL Corporation**

LOS ANGELES, CA / CHICAGO, IL / DALLAS, TX / DENVER, CO / HONOLULU, HI  
HOUSTON, TX / LOS ANGELES, CA / MIAMI, FL / NEW YORK, NY / WASHINGTON, D.C.

VSL Corporation (VSL) is a registered professional engineering firm in the State of Michigan. The information contained herein is the property of VSL Corporation and is not to be distributed, copied, or used in any manner without the written consent of VSL Corporation. Any other use is strictly prohibited and will result in legal action. VSL CORPORATION ASSUMES NO LIABILITY FOR ANY DAMAGE TO PERSONS OR PROPERTY.

RETAINED EARTH WALL #9  
STA 381+50 TO STA 382+75  
SR 189  
PROVO CANYON UTAH

PROJECT NO  
F-019 (31)

JOB NO 278-PB110

17 of 17