

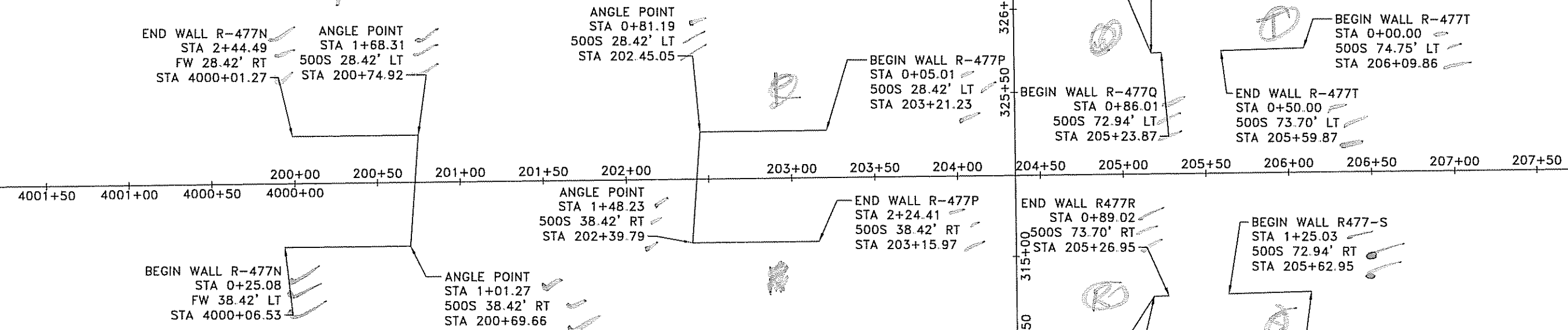


SPECIALIZING IN
CONSTRUCTION PRODUCTS

MAIN OFFICE
4740 Scotts Valley Drive, Suite "E"
Scotts Valley, California 95066
Telephone 831/430-9300
FAX 831/430-9340

FOR QUESTIONS OR INFORMATION REGARDING THIS
SUBMITTAL PLEASE CONTACT ANDREW MECKLER
AT THE MAIN OFFICE

INDEX OF DRAWINGS	
SHEET	DESCRIPTION
WW1	PLAN VIEW AND INDEX OF DRAWINGS
WW2	ELEVATIONS: WALLS N - 1 OF 2
WW3	ELEVATIONS: WALL N - 2 OF 2
WW4	ELEVATIONS: WALL P - 1 OF 2
WW5	ELEVATIONS: WALL P - 2 OF 2
WW6	ELEVATIONS: WALL T
WW7	ELEVATIONS: WALL Q
WW8	ELEVATIONS: WALL R
WW9	ELEVATIONS: WALL S
WW10	TYPICAL CROSS SECTIONS - 1 OF 4
WW11	TYPICAL CROSS SECTIONS - 2 OF 4
WW12	TYPICAL CROSS SECTIONS - 3 OF 4
WW13	TYPICAL CROSS SECTIONS - 4 OF 4
WW14	STANDARD WIRE WALL DETAILS: 1 OF 2
WW15	STANDARD WIRE WALL DETAILS: 2 OF 2



Furnish As Submitted
 Revise And Resubmit
 Furnish As Corrected
 Submit Specified Item

Corrections or comments made on the shop drawings during this review do not relieve contractor from compliance with requirements of the drawings and specifications. This check is only for review of general details and with the design content of the project and for compliance with the information given in the contract documents. The contractor is responsible for obtaining and completing all quantities and drawings, selecting fabrication processes and methods and construction, coordinating his work with that of all other trades and performing his work in a safe and satisfactory manner.

CALYER & BURGESS, INC.
 Date 3/26/07 By SKW

- DESIGN PARAMETERS**
- SOIL PARAMETERS:
INTERNAL DESIGN - $\phi=34^\circ$, $\lambda=125$ PCF
EXTERNAL DESIGN: RETAINED - $\phi=35^\circ$, $\lambda=135$ PCF
 - SOIL REINFORCEMENT:
WELDED WIRE MESH ($f_y = 75,000$ PSI)
CORROSION RATE ZINC = $15 \mu\text{m}/\text{YEAR}$ (FIRST 2 YEARS)
= $4 \mu\text{m}/\text{YEAR}$ (THEREAFTER)
CORROSION RATE STEEL = $12 \mu\text{m}/\text{YEAR}$

- DESIGN CRITERIA**
- TRAFFIC SURCHARGE = 250 PSF
 - DESIGN LIFE = 75 YEARS
 - AASHTO 2005 LRFD SPECIFICATIONS

- NOTES:**
- MSE DESIGN CRITERIA IS LISTED ON PROJECT SPECIFICATIONS CALCULATIONS.
 - SSL ENGINEERING DRAWINGS ARE TO BE USED IN CONJUNCTION WITH THE CONTRACT DOCUMENTS FOR DETAILS AND FEATURES NOT SHOWN HERE.
 - SSL EXPERTISE IS IN THE DESIGN, DETAILING AND PRODUCTION OF PROPRIETARY AND OR PATENTED PERMANENT AND TEMPORARY MSE WALL SYSTEM COMPONENTS.
 - THE INCLUSION OF THE SSL INSTALLATION AND ERECTION SEQUENCE MANUAL DOES NOT RELIEVE THE CONTRACTOR TO COMPLY WITH THE CONTRACT DOCUMENTS FOR THE DEVELOPMENT AND IMPLEMENTATION OF A SAFE CONSTRUCTION PROCEDURE WHICH COMPLIES WITH THE CONTRACT DOCUMENTS.
 - THE OWNER REMAINS RESPONSIBLE FOR THE INSPECTION AND ACCEPTANCE OF THE COMPLETED RETAINING WALL.

Provide Utah Registered Engineer Stamp

FOR QUESTIONS OR INFORMATION PLEASE CONTACT ANDREW MECKLER AT THE MAIN OFFICE

THE DESIGN OF THESE MSE PLUS_w WALLS IS BASED ON THE ASSUMPTION THAT ALL MATERIALS AND METHODS OF CONSTRUCTION CONFORM TO THE SPECIFICATIONS FOR MSE PLUS_w RETAINING WALLS, THE PROJECT BID DOCUMENTS.

THESE DRAWINGS, AS WELL AS THE DESIGN, ARE CERTIFIED WITH RESPECT TO THE INTERNAL STABILITY OF THE MSE PLUS_w STRUCTURES ONLY. EXTERNAL STABILITY INCLUDING, BUT NOT LIMITED TO, SLOPE AND FOUNDATION STABILITY IS THE RESPONSIBILITY OF THE OWNER AND THE ENGINEER FOR THE OWNER.

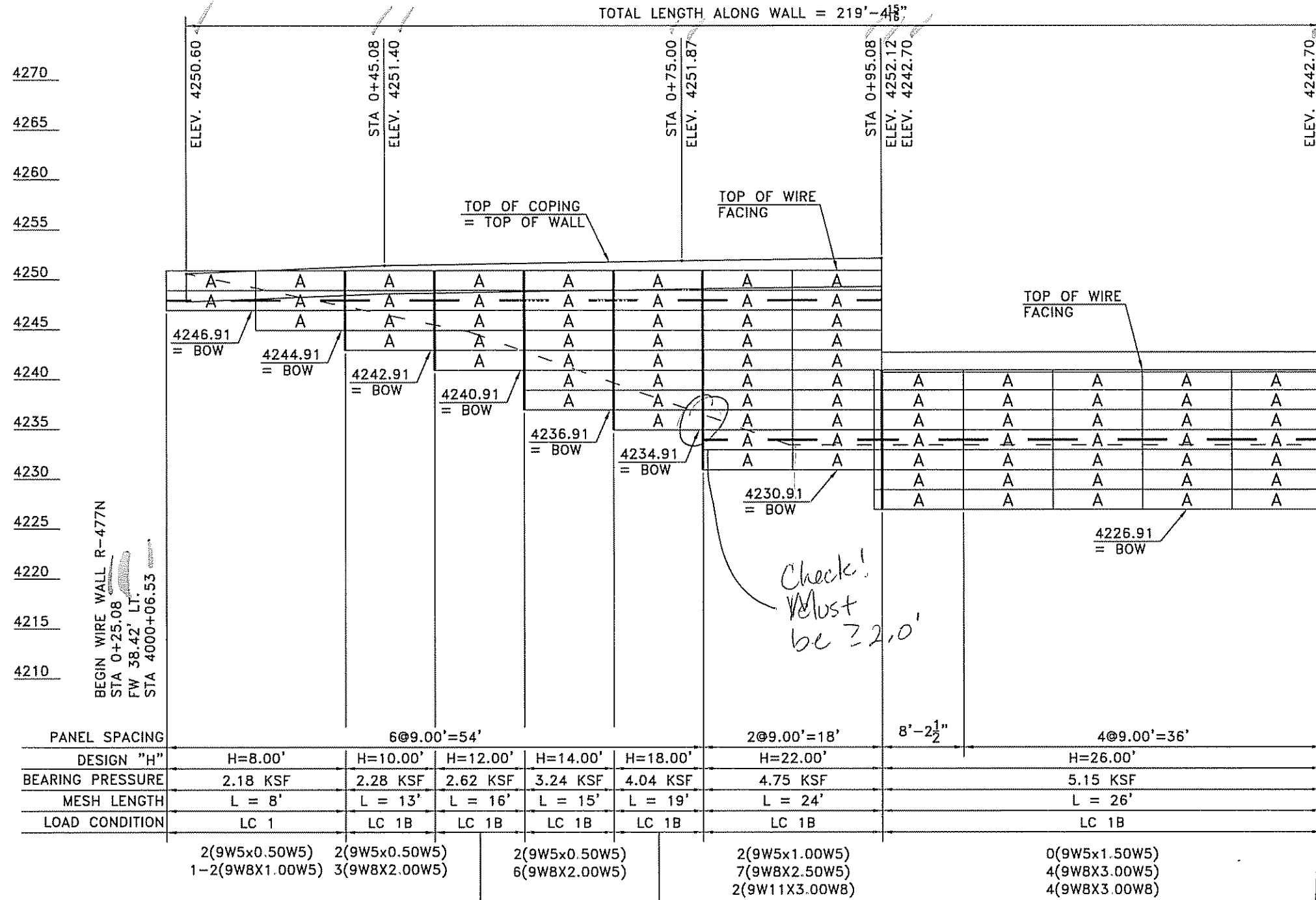
NO.	DATE	REVISION	BY



SPECIALIZING IN
 CONSTRUCTION PRODUCTS
SSL
 MAIN OFFICE
 4740 Scotts Valley Dr., Suite "E"
 Scotts Valley, California 95066
 Phone 831 430 9300
 Fax 831 430 9340

PLAN VIEW AND INDEX OF DRAWINGS
 LEGACY PARKWAY SEGMENT 1
 UTAH DEPARTMENT OF TRANSPORTATION
 SALT LAKE CITY, UTAH
 PROJECT No. SP-0067(10)4

Date:	03/13/07
Scale:	NTS
Drawn By:	AJM
Job:	2506
Sheet:	WW-1
Sheet	1 of 15



TOTAL LENGTH ALONG WALL = 219'-4 1/8"

4270
4265
4260
4255
4250
4245
4240
4235
4230
4225
4220
4215
4210

BEGIN WIRE WALL R-477N
STA 0+25.08
FW 38.42' LT.
STA 4000+06.53

TOP OF COPING = TOP OF WALL
TOP OF WIRE FACING

TOP OF WIRE FACING

Check!
Must be ≥ 2.0'

Furnish As Submitted
 Revise And Resubmit
 Furnish As Corrected
 Submit Specified Item

Consideration or comments made on the shop drawings during the review do not relieve contractor from compliance with requirements of the drawings and specifications. This check is only for review of general information with the design concept of the project and does not constitute compliance with the information given in the contract documents. The contractor is responsible for preparing and correlating all materials and dimensions; selecting fabrication processes and methods; and performing his work in a safe and satisfactory manner.

CARTER & BURGESS, INC.
Date 3/20/07 By skw

Provide Utah Registered Engineer Stamp

GENERAL NOTES:
1. ELEVATIONS SHOWN ABOVE WALL ARE TO TOP OF COPING.
2. ELEVATIONS SHOWN BELOW WALL ARE TO TOP OF CAST-IN-PLACE LEVELING PAD.
3. SEE THE GENERAL PROVISIONS FOR EARTH RETAINING STRUCTURES FOR MATERIAL AND CONSTRUCTION SPECIFICATIONS.

SOIL REINFORCEMENT LENGTHS
1. MESH LENGTH SHOWN ABOVE BASE WIDTH LINE.
2. HEAVY VERTICAL LINES SEPARATE ZONES OF DIFFERENT MESH LENGTHS / DESIGN HEIGHTS.
3. MESH TYPES SHOWN BELOW MESH LENGTH LINE (SEE STANDARD DETAIL SHEET FOR MESH KEY)
4. THE NUMBER PRECEDING THE MESH TYPE INDICATES THE NUMBER OF LAYERS OF THAT TYPE REQUIRED.

MSE WALL R-477N: ELEVATIONS
(FRONT FACE SHOWN)

FOR QUESTIONS OR INFORMATION PLEASE CONTACT ANDREW MECKLER AT THE MAIN OFFICE

THE DESIGN OF THESE MSE PLUS_w WALLS IS BASED ON THE ASSUMPTION THAT ALL MATERIALS AND METHODS OF CONSTRUCTION CONFORM TO THE SPECIFICATIONS FOR MSE PLUS_w RETAINING WALLS, THE PROJECT BID DOCUMENTS.

THESE DRAWINGS, AS WELL AS THE DESIGN, ARE CERTIFIED WITH RESPECT TO THE INTERNAL STABILITY OF THE MSE PLUS_w STRUCTURES ONLY. EXTERNAL STABILITY INCLUDING, BUT NOT LIMITED TO, SLOPE AND FOUNDATION STABILITY IS THE RESPONSIBILITY OF THE OWNER AND THE ENGINEER FOR THE OWNER.

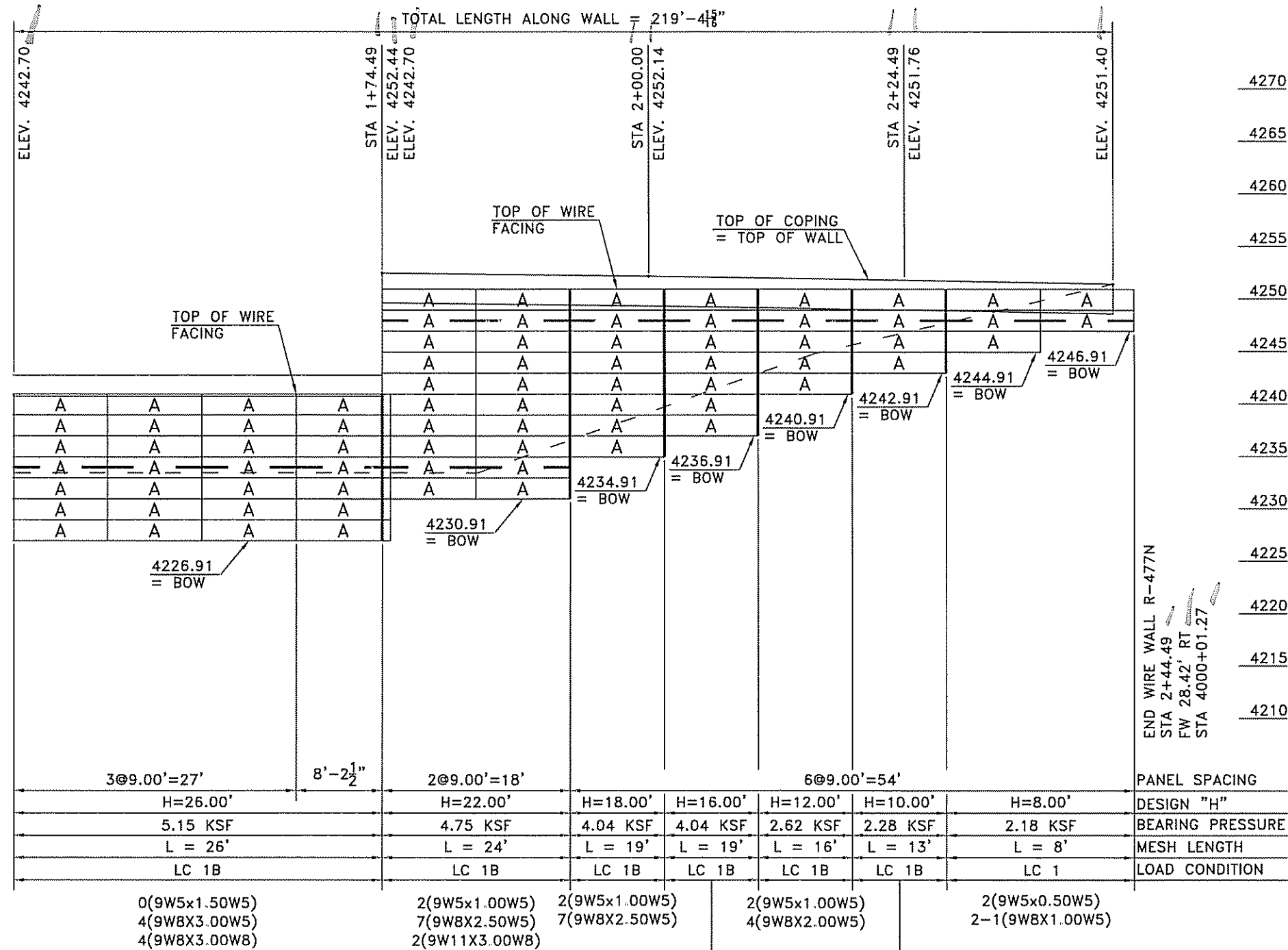
NO.	DATE	REVISION	BY



SPECIALIZING IN CONSTRUCTION PRODUCTS
SSL
MAIN OFFICE
4740 South Valley Dr., Suite 100
Salt Lake City, Utah 84106
Phone: 801.439.9300
Fax: 801.439.9340

ELEVATIONS: WALL N - 1 OF 2
LEGACY PARKWAY SEGMENT 1
UTAH DEPARTMENT OF TRANSPORTATION
SALT LAKE CITY, UTAH
PROJECT No. SP-0067(10)4

Date: 03/13/07
Scale: NTS
Drawn By: AJM
Job: 2506
Sheet: WW-2
Sheet 2 of 15



Furnish As Submitted
 Revise And Resubmit
 Furnish As Corrected
 Submit Specified Item

Certifications or comments made on the shop drawings during this review do not relieve contractor from compliance with requirements of the drawings and specifications. This check is only for review of general compliance with the design concept of the project and general compliance with the information given in the shop drawings. The contractor is responsible for checking and correlating all quantities and dimensions, selecting fabrication processes and methods of construction, coordinating his work with that of all other trades, and performing his work in a safe and satisfactory manner.

CARRIER & BURGESS, INC.
 Date 3/20/07 By SKW

Provide Utah Registered Engineer Stamp

- GENERAL NOTES:**
- ELEVATIONS SHOWN ABOVE WALL ARE TO TOP OF COPING.
 - ELEVATIONS SHOWN BELOW WALL ARE TO TOP OF CAST-IN-PLACE LEVELING PAD.
 - SEE THE GENERAL PROVISIONS FOR EARTH RETAINING STRUCTURES FOR MATERIAL AND CONSTRUCTION SPECIFICATIONS.

- SOIL REINFORCEMENT LENGTHS**
- MESH LENGTH SHOWN ABOVE BASE WIDTH LINE.
 - HEAVY VERTICAL LINES SEPARATE ZONES OF DIFFERENT MESH LENGTHS / DESIGN HEIGHTS.
 - MESH TYPES SHOWN BELOW MESH LENGTH LINE. (SEE STANDARD DETAIL SHEET FOR MESH KEY)
 - THE NUMBER PRECEDING THE MESH TYPE INDICATES THE NUMBER OF LAYERS OF THAT TYPE REQUIRED.

MSE WALL R-477N: ELEVATIONS

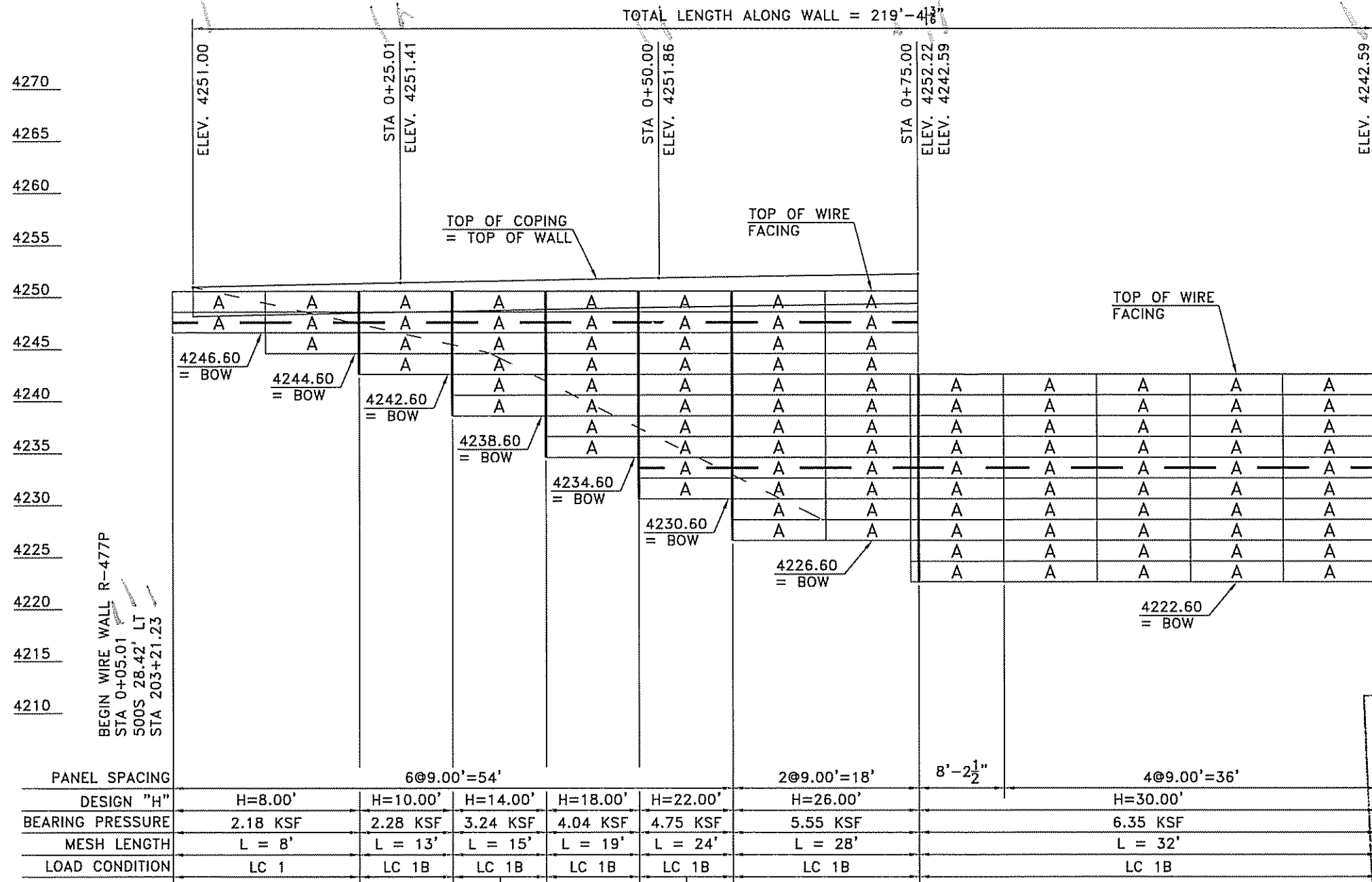
(FRONT FACE SHOWN)

FOR QUESTIONS OR INFORMATION PLEASE CONTACT ANDREW MECKLER AT THE MAIN OFFICE

THE DESIGN OF THESE MSE PLUSSM WALLS IS BASED ON THE ASSUMPTION THAT ALL MATERIALS AND METHODS OF CONSTRUCTION CONFORM TO THE SPECIFICATIONS FOR MSE PLUSSM RETAINING WALLS. THE PROJECT BID DOCUMENTS.

THESE DRAWINGS, AS WELL AS THE DESIGN, ARE CERTIFIED WITH RESPECT TO THE INTERNAL STABILITY OF THE MSE PLUSSM STRUCTURES ONLY. EXTERNAL STABILITY INCLUDING, BUT NOT LIMITED TO, SLOPE AND FOUNDATION STABILITY IS THE RESPONSIBILITY OF THE OWNER AND THE ENGINEER FOR THE OWNER.

NO.		DATE	
REVISON		BY	
ELEVATIONS: WALL N - 2 OF 2 LEGACY PARKWAY SEGMENT 1 UTAH DEPARTMENT OF TRANSPORTATION SALT LAKE CITY, UTAH PROJECT No. SP-0067(10)4			
Date:	03/13/07		
Scale:	NTS		
Drawn By:	AJM		
Job:	2506		
Sheet:	WW-3		
Sheet	3	of	15



PANEL SPACING	6@9.00'=54'					2@9.00'=18'	8'-2 1/2"	4@9.00'=36'
DESIGN "H"	H=8.00'	H=10.00'	H=14.00'	H=18.00'	H=22.00'	H=26.00'	H=30.00'	
BEARING PRESSURE	2.18 KSF	2.28 KSF	3.24 KSF	4.04 KSF	4.75 KSF	5.55 KSF	6.35 KSF	
MESH LENGTH	L = 8'	L = 13'	L = 15'	L = 19'	L = 24'	L = 28'	L = 32'	
LOAD CONDITION	LC 1	LC 1B	LC 1B	LC 1B	LC 1B	LC 1B	LC 1B	

2(9W5x0.50W5)
1-2(9W8X1.00W5)

2(9W5x0.50W5)
3(9W8X2.00W5)

2(9W5x1.00W5)
7(9W8X2.50W5)

2(9W5x1.50W5)
7(9W8X3.00W5)
4(9W8X3.00W8)

0(9W5x1.50W5)
5(9W8X3.00W5)
6(9W8X3.00W8)

2(9W5x0.50W5)
5(9W8X2.00W5)

2(9W5x1.00W5)
7(9W8X3.00W5)
2(9W11X3.00W8)

Furnish As Submitted
 Furnish As Corrected

Scope And Required
 Items Specified

Corrections or comments made on the shop drawings during the review do not relieve contractor from compliance with requirements of the drawings and specifications. This check is only for review of general compliance with the design concept of the project and does not constitute compliance with the information given in the contract documents. The contractor is responsible for confirming and correlating all quantities and dimensions, selecting fabrication processes and techniques of construction, coordinating his work with that of all other trades, and performing his work in a safe and satisfactory manner.

CARTER & BURGESS, INC.
Date 3/20/07 By SKW

Provide Utah Registered Engineer Stamp

GENERAL NOTES:
1. ELEVATIONS SHOWN ABOVE WALL ARE TO TOP OF COPING.
2. ELEVATIONS SHOWN BELOW WALL ARE TO TOP OF CAST-IN-PLACE LEVELING PAD.
3. SEE THE GENERAL PROVISIONS FOR EARTH RETAINING STRUCTURES FOR MATERIAL AND CONSTRUCTION SPECIFICATIONS.

SOIL REINFORCEMENT LENGTHS
1. MESH LENGTH SHOWN ABOVE BASE WIDTH LINE.
2. HEAVY VERTICAL LINES SEPARATE ZONES OF DIFFERENT MESH LENGTHS / DESIGN HEIGHTS.
3. MESH TYPES SHOWN BELOW MESH LENGTH LINE. (SEE STANDARD DETAIL SHEET FOR MESH KEY)
4. THE NUMBER PRECEDING THE MESH TYPE INDICATES THE NUMBER OF LAYERS OF THAT TYPE REQUIRED.

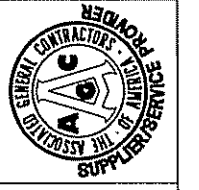
MSE WALL R-477P: ELEVATIONS
(FRONT FACE SHOWN)

FOR QUESTIONS OR INFORMATION PLEASE CONTACT ANDREW MECKLER AT THE MAIN OFFICE

THE DESIGN OF THESE MSE PLUS WALLS IS BASED ON THE ASSUMPTION THAT ALL MATERIALS AND METHODS OF CONSTRUCTION CONFORM TO THE SPECIFICATIONS FOR MSE PLUS RETAINING WALLS, THE PROJECT BID DOCUMENTS.

THESE DRAWINGS, AS WELL AS THE DESIGN, ARE CERTIFIED WITH RESPECT TO THE INTERNAL STABILITY OF THE MSE PLUS STRUCTURES ONLY. EXTERNAL STABILITY INCLUDING, BUT NOT LIMITED TO, SLOPE AND FOUNDATION STABILITY IS THE RESPONSIBILITY OF THE OWNER AND THE ENGINEER FOR THE OWNER.

NO.	DATE	BY



SPECIALIZING IN CONSTRUCTION PRODUCTS

SSL

MAIN OFFICE
4740 South Valley Dr., Suite 101
Scotts Valley, California 95066
Phone: 831.439.9300
Fax: 831.439.9340

ELEVATIONS: WALL P - 1 OF 2

LEGACY PARKWAY SEGMENT 1
UTAH DEPARTMENT OF TRANSPORTATION
SALT LAKE CITY, UTAH
PROJECT No. SP-0067(10)4

Date: 03/13/07

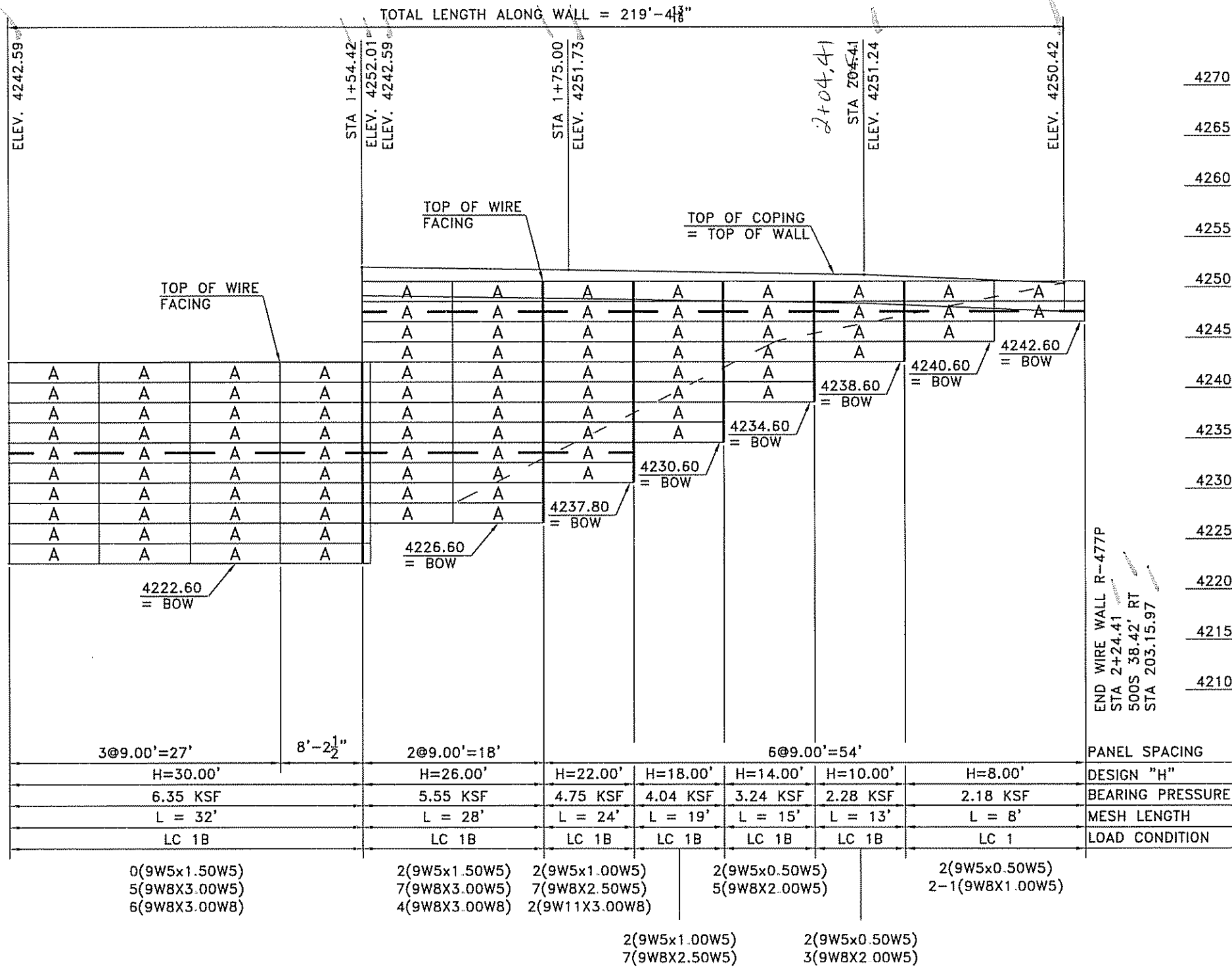
Scale: NTS

Drawn By: AJM

Job: 2506

Sheet: WW-4

Sheet 4 of 15



4270
4265
4260
4255
4250
4245
4240
4235
4230
4225
4220
4215
4210

END WIRE WALL R-477P
STA 2+24.41
500S 38.42' RT
STA 203.15.97

Furnish As Submitted Revise And Resubmit
 Furnish As Corrected Submit Specified Item

Corrections or comments made on the shop drawings during this review do not relieve contractor from compliance with requirements of the drawings and specifications. This check is only for review of general compliance with the design concept of the project and for compliance with the information given in the contract documents. The contractor is responsible for confirming and correlating all quantities and dimensions, selecting fabrication processes and techniques of construction, coordinating his work with that of all other trades; and performing his work in a safe and satisfactory manner.

GARTER & BURGESS, INC.
Date 3/20/07 By skw

Provide Utah Registered Engineer Stamp

GENERAL NOTES:
1. ELEVATIONS SHOWN ABOVE WALL ARE TO TOP OF COPING.
2. ELEVATIONS SHOWN BELOW WALL ARE TO TOP OF CAST-IN-PLACE LEVELING PAD.
3. SEE THE GENERAL PROVISIONS FOR EARTH RETAINING STRUCTURES FOR MATERIAL AND CONSTRUCTION SPECIFICATIONS.

SOIL REINFORCEMENT LENGTHS
1. MESH LENGTH SHOWN ABOVE BASE WIDTH LINE.
2. HEAVY VERTICAL LINES SEPARATE ZONES OF DIFFERENT MESH LENGTHS / DESIGN HEIGHTS.
3. MESH TYPES SHOWN BELOW MESH LENGTH LINE. (SEE STANDARD DETAIL SHEET FOR MESH KEY)
4. THE NUMBER PRECEDING THE MESH TYPE INDICATES THE NUMBER OF LAYERS OF THAT TYPE REQUIRED.

MSE WALL R-477P: ELEVATIONS
(FRONT FACE SHOWN)

FOR QUESTIONS OR INFORMATION PLEASE CONTACT ANDREW MECKLER AT THE MAIN OFFICE

THE DESIGN OF THESE MSE PLUS_w WALLS IS BASED ON THE ASSUMPTION THAT ALL MATERIALS AND METHODS OF CONSTRUCTION CONFORM TO THE SPECIFICATIONS FOR MSE PLUS_w RETAINING WALLS, THE PROJECT BID DOCUMENTS.

THESE DRAWINGS, AS WELL AS THE DESIGN, ARE CERTIFIED WITH RESPECT TO THE INTERNAL STABILITY OF THE MSE PLUS_w STRUCTURES ONLY. EXTERNAL STABILITY INCLUDING, BUT NOT LIMITED TO, SLOPE AND FOUNDATION STABILITY IS THE RESPONSIBILITY OF THE OWNER AND THE ENGINEER FOR THE OWNER.

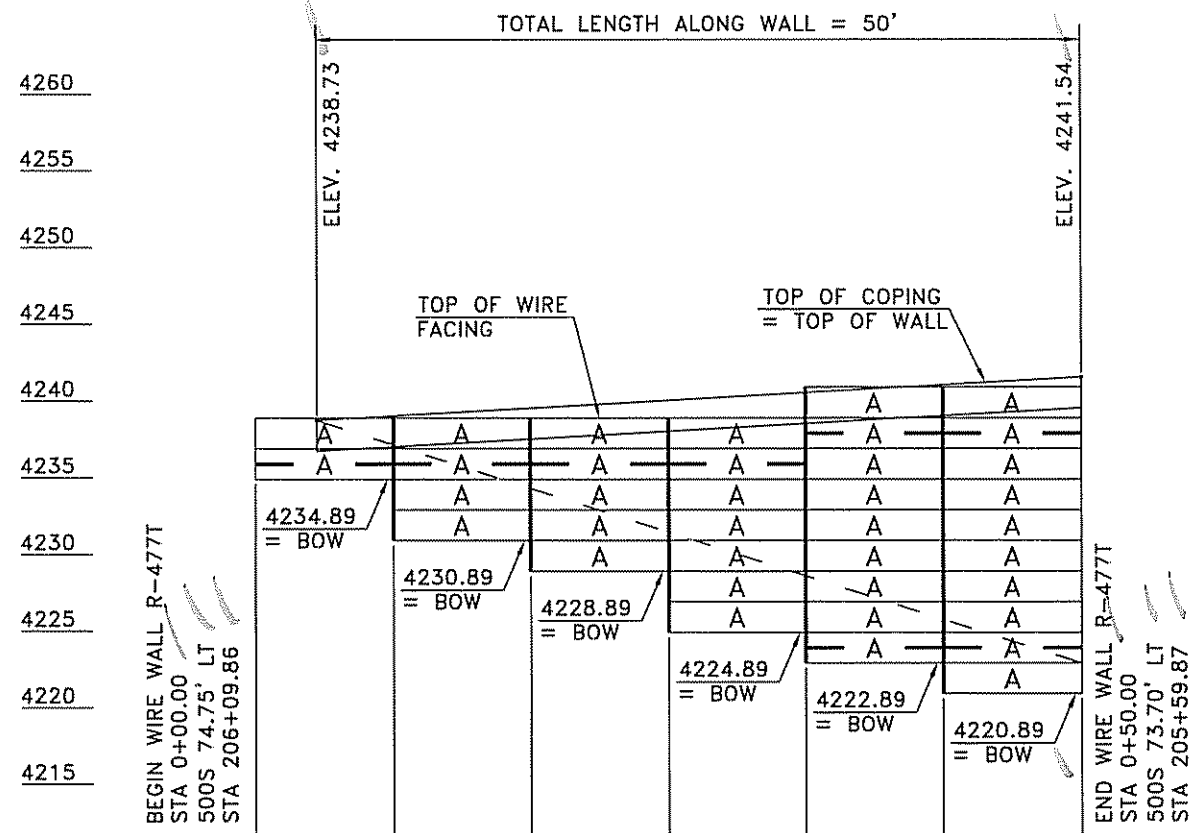
NO.	DATE	BY



SPECIALIZING IN CONSTRUCTION PRODUCTS
SSL
MAIN OFFICE
4740 South Valley Dr., Suite 12
South Valley, California 92666
Phone 818 439 9300
Fax 818 439 9340

ELEVATIONS: WALL P - 2 OF 2
LEGACY PARKWAY SEGMENT 1
UTAH DEPARTMENT OF TRANSPORTATION
SALT LAKE CITY, UTAH
PROJECT No. SP-0067(10)4

Date:	03/13/07
Scale:	NTS
Drawn By:	AJM
Job:	2506
Sheet:	WW-5
Sheet	5 of 15



PANEL SPACING	6@9.00'=54'					
DESIGN "H"	H=8.00'	H=10.00'	H=12.00'	H=16.00'	H=20.00'	H=22.00'
BEARING PRESSURE	1.87 KSF	2.28 KSF	2.62 KSF	4.04 KSF	4.44 KSF	4.75 KSF
MESH LENGTH	L = 11'	L = 13'	L = 16'	L = 19'	L = 21'	L = 24'
LOAD CONDITION	LC 1B	LC 1B	LC 1B	LC 1B	LC 1B	LC 1B

2(9W5x0.50W5) 1(9W8X1.50W5)	2(9W5x1.00W5) 4(9W8X2.00W5)	2(9W5x1.00W5) 7(9W8X2.50W5) 1(9W11X3.00WB)	2(9W5x1.00W5) 3(9W8X2.00W5)	2(9W5x1.00W5) 6(9W8X2.50W5)	2(9W5x1.00W5) 7(9W8X2.50W5) 2(9W11X3.00WB)
--------------------------------	--------------------------------	--	--------------------------------	--------------------------------	--

GENERAL NOTES:
 1. ELEVATIONS SHOWN ABOVE WALL ARE TO TOP OF COPING.
 2. ELEVATIONS SHOWN BELOW WALL ARE TO TOP OF CAST-IN-PLACE LEVELING PAD.
 3. SEE THE GENERAL PROVISIONS FOR EARTH RETAINING STRUCTURES FOR MATERIAL AND CONSTRUCTION SPECIFICATIONS.

SOIL REINFORCEMENT LENGTHS
 1. MESH LENGTH SHOWN ABOVE BASE WIDTH LINE.
 2. HEAVY VERTICAL LINES SEPARATE ZONES OF DIFFERENT MESH LENGTHS / DESIGN HEIGHTS.
 3. MESH TYPES SHOWN BELOW MESH LENGTH LINE. (SEE STANDARD DETAIL SHEET FOR MESH KEY)
 4. THE NUMBER PRECEDING THE MESH TYPE INDICATES THE NUMBER OF LAYERS OF THAT TYPE REQUIRED.

MSE WALL R-477T: ELEVATIONS

(FRONT FACE SHOWN)

Finish As Submitted Revise And Resubmit
 Finish As Corrected Submit Specified Item

Corrections or comments made on the shop drawings during this review do not relieve contractor from compliance with requirements of the drawings and specifications. This check is only for a few of general compliance with the design concept of the project and does not constitute compliance with the information given in the contract documents. The contractor is responsible for conformity and completing all quantities and dimensions, selecting fabrication practices and techniques of construction, coordinating his work with that of related trades, and performing his work in a safe and satisfactory manner.

CARTER & BURGESS, INC.
 Date 3/20/07 By SKW

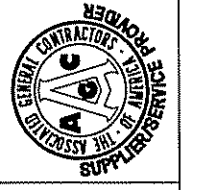
Provide Utah Registered Engineer Stamp

FOR QUESTIONS OR INFORMATION PLEASE CONTACT ANDREW MECKLER AT THE MAIN OFFICE

THE DESIGN OF THESE MSE PLUS_W WALLS IS BASED ON THE ASSUMPTION THAT ALL MATERIALS AND METHODS OF CONSTRUCTION CONFORM TO THE SPECIFICATIONS FOR MSE PLUS_W RETAINING WALLS, THE PROJECT BID DOCUMENTS.

THESE DRAWINGS, AS WELL AS THE DESIGN, ARE CERTIFIED WITH RESPECT TO THE INTERNAL STABILITY OF THE MSE PLUS_W STRUCTURES ONLY. EXTERNAL STABILITY INCLUDING, BUT NOT LIMITED TO, SLOPE AND FOUNDATION STABILITY IS THE RESPONSIBILITY OF THE OWNER AND THE ENGINEER FOR THE OWNER.

NO.	DATE	REVISION	BY



SPECIALIZING IN CONSTRUCTION PRODUCTS
SSL
 4748 South Valley Dr., Suite 100
 South Valley, California 92666
 Phone 818.439.9300
 Fax 818.439.9340

ELEVATIONS: WALL T
 LEGACY PARKWAY SEGMENT 1
 UTAH DEPARTMENT OF TRANSPORTATION
 SALT LAKE CITY, UTAH
 PROJECT No. SP-0067(10)4

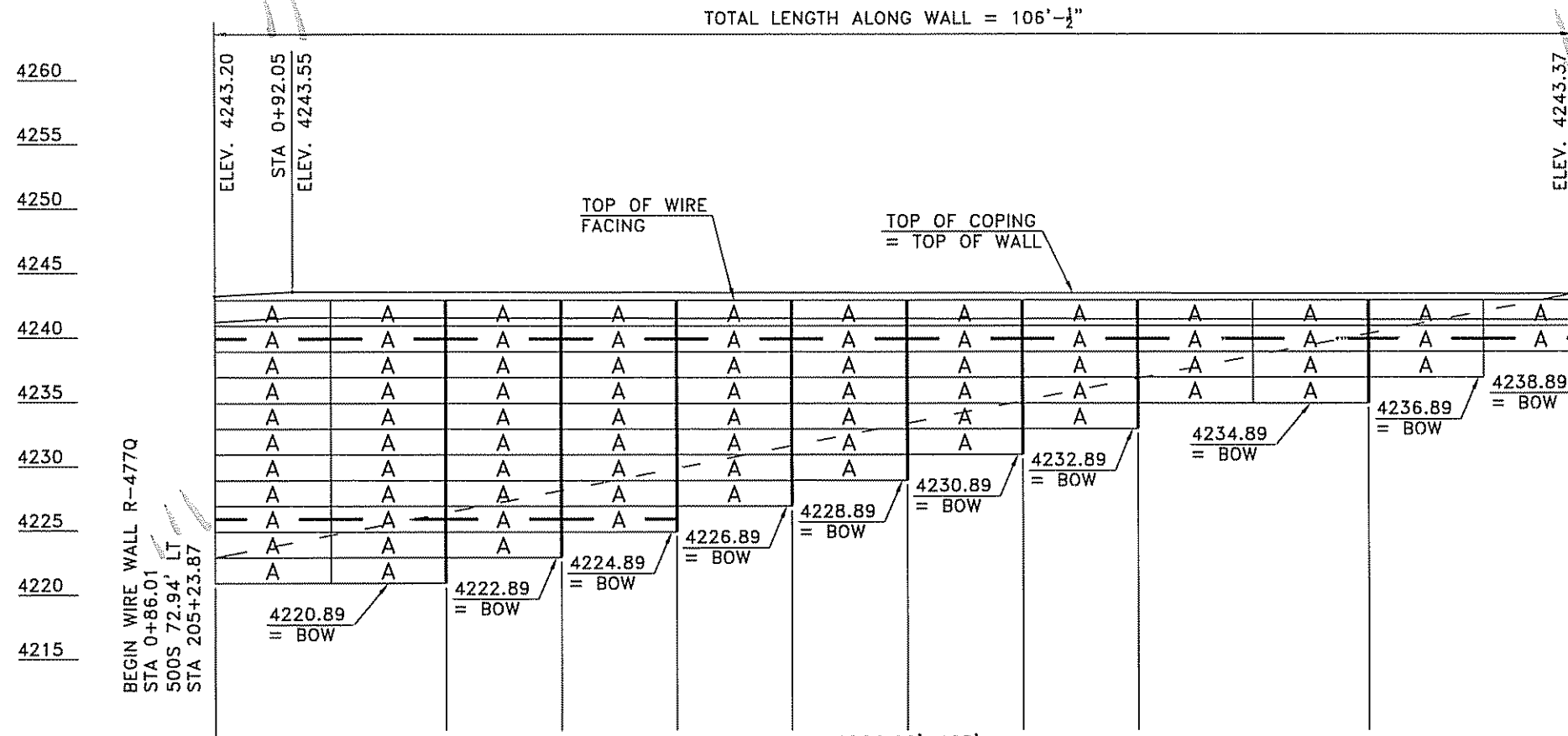
Date: 03/13/07

Scale: NTS

Drawn By: AJM

Job: 2506

Sheet: **WW-6**
 Sheet 6 of 15



PANEL SPACING	12@9.00'=108'									
DESIGN "H"	H=24.00'	H=22.00'	H=20.00'	H=18.00'	H=16.00'	H=14.00'	H=12.00'	H=10.00'	H=8.00'	
BEARING PRESSURE	5.15 KSF	4.75 KSF	4.44 KSF	4.04 KSF	4.04 KSF	3.24 KSF	2.62 KSF	2.28 KSF	2.18 KSF	
MESH LENGTH	L = 26'	L = 24'	L = 21'	L = 19'	L = 19'	L = 15'	L = 16'	L = 13'	L = 8'	
LOAD CONDITION	LC 1B	LC 1B	LC 1B	LC 1B	LC 1B	LC 1B	LC 1B	LC 1B	LC 1	

2(9W5x1.50W5) 7(9W8X3.00W5) 3(9W11X3.00W8)	2(9W5x1.00W5) 7(9W8X2.50W5) 2(9W11X3.00W8)	2(9W5x1.00W5) 7(9W8X2.50W5) 1(9W11X3.00W8)	2(9W5x1.00W5) 6(9W8X2.50W5)	2(9W5x0.50W5) 5(9W8X2.00W5)	2(9W5x1.00W5) 4(9W8X2.00W5)	2(9W5x0.50W5) 3(9W8X2.00W5)	2(9W5x0.50W5) 2-1(9W8X1.00W5)
--	--	--	--------------------------------	--------------------------------	--------------------------------	--------------------------------	----------------------------------

END WIRE WALL R-477Q
STA 1+92.05
NE RAMP 44.59' RT
STA 326+65.16

Furnish As Submitted Revise And Resubmit
 Furnish As Contracted Submit Specified Item

Comments or comments made on the shop drawings under this review do not relieve contractor from responsibility for compliance of the drawings and specifications. This check is only for review of general compliance with the design concept of the project and not for compliance with the information given in the contract documents. The contractor is responsible for coordinating and consulting all quantities and dimensions, selecting fabrication processes and methods of construction, coordinating his work with that of all other trades and performing his work in a safe and satisfactory manner.

DAWTER & BURGESS, INC.
Date 3/20/07 By SKW

Provider Registered Engineer Stamp

GENERAL NOTES:
1. ELEVATIONS SHOWN ABOVE WALL ARE TO TOP OF COPING.
2. ELEVATIONS SHOWN BELOW WALL ARE TO TOP OF CAST-IN-PLACE LEVELING PAD.
3. SEE THE GENERAL PROVISIONS FOR EARTH RETAINING STRUCTURES FOR MATERIAL AND CONSTRUCTION SPECIFICATIONS.

SOIL REINFORCEMENT LENGTHS
1. MESH LENGTH SHOWN ABOVE BASE WIDTH LINE.
2. HEAVY VERTICAL LINES SEPARATE ZONES OF DIFFERENT MESH LENGTHS / DESIGN HEIGHTS.
3. MESH TYPES SHOWN BELOW MESH LENGTH LINE. (SEE STANDARD DETAIL SHEET FOR MESH KEY)
4. THE NUMBER PRECEDING THE MESH TYPE INDICATES THE NUMBER OF LAYERS OF THAT TYPE REQUIRED.

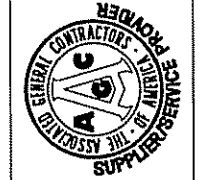
MSE WALL R-477Q: ELEVATIONS
(FRONT FACE SHOWN)

FOR QUESTIONS OR INFORMATION PLEASE CONTACT ANDREW HECKLER AT THE MAIN OFFICE

THE DESIGN OF THESE MSE PLUS_w WALLS IS BASED ON THE ASSUMPTION THAT ALL MATERIALS AND METHODS OF CONSTRUCTION CONFORM TO THE SPECIFICATIONS FOR MSE PLUS_w RETAINING WALLS, THE PROJECT BID DOCUMENTS.

THESE DRAWINGS, AS WELL AS THE DESIGN, ARE CERTIFIED WITH RESPECT TO THE INTERNAL STABILITY OF THE MSE PLUS_w STRUCTURES ONLY. EXTERNAL STABILITY INCLUDING, BUT NOT LIMITED TO, SLOPE AND FOUNDATION STABILITY IS THE RESPONSIBILITY OF THE OWNER AND THE ENGINEER FOR THE OWNER.

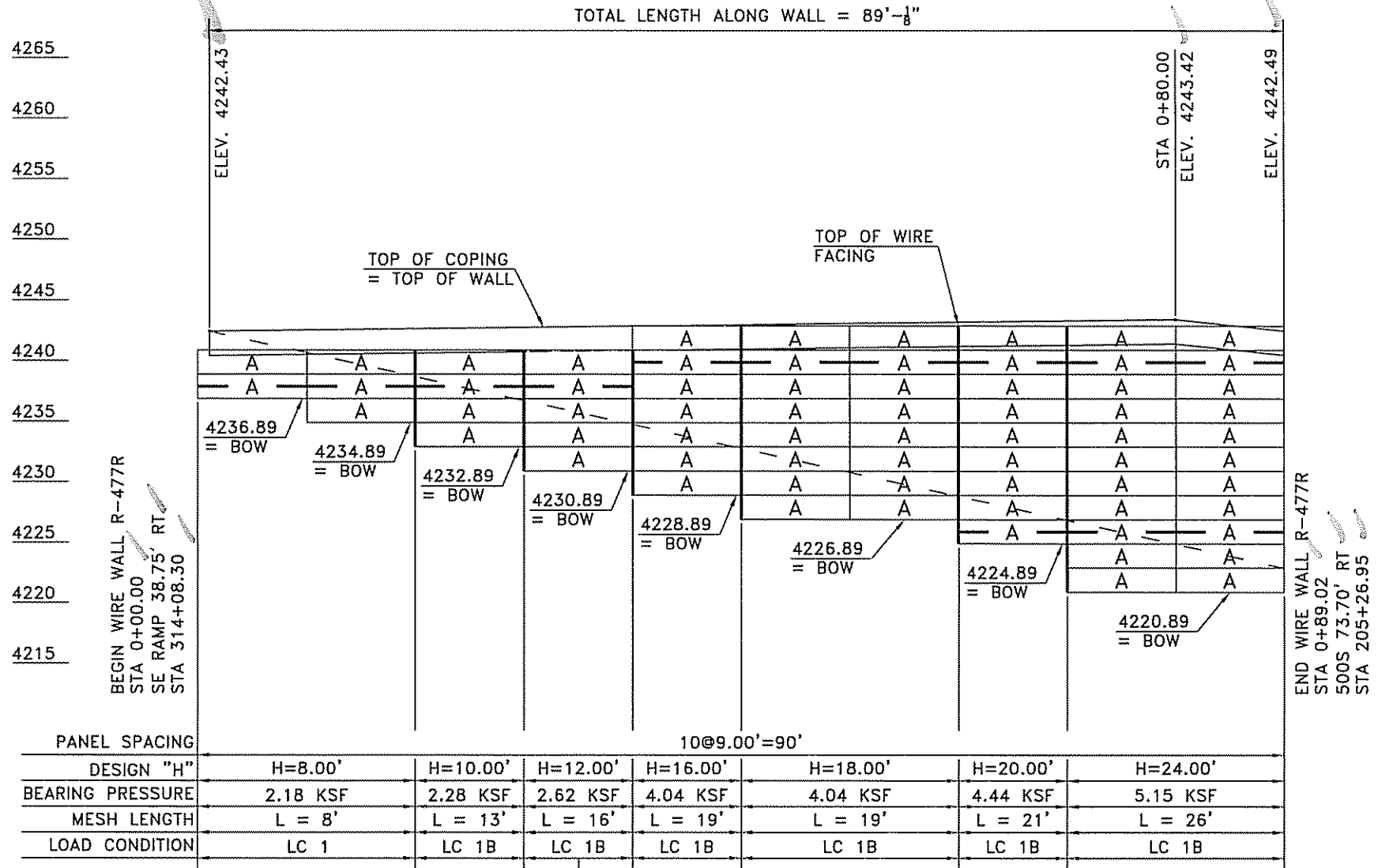
NO.	DATE	REVISION	BY



SSL
SPECIALIZING IN CONSTRUCTION PRODUCTS
MAIN OFFICE: 4740 South Valley Dr., Suite 111, South Valley, California 92656
Phone: 818-439-8300 Fax: 818-439-8340

ELEVATIONS: WALL Q
LEGACY PARKWAY SEGMENT 1
UTAH DEPARTMENT OF TRANSPORTATION
SALT LAKE CITY, UTAH
PROJECT No. SP-0067(10)4

Date: 03/13/07
Scale: NTS
Drawn By: AJM
Job: 2506
Sheet: WW-7
Sheet 7 of 15



PANEL SPACING	10@9.00'=90'							
DESIGN "H"	H=8.00'	H=10.00'	H=12.00'	H=16.00'	H=18.00'	H=20.00'	H=24.00'	
BEARING PRESSURE	2.18 KSF	2.28 KSF	2.62 KSF	4.04 KSF	4.04 KSF	4.44 KSF	5.15 KSF	
MESH LENGTH	L = 8'	L = 13'	L = 16'	L = 19'	L = 19'	L = 21'	L = 26'	
LOAD CONDITION	LC 1	LC 1B	LC 1B	LC 1B	LC 1B	LC 1B	LC 1B	
	2(9W5x0.50W5) 1-2(9W8X1.00W5)	2(9W5x0.50W5) 3(9W8X2.00W5)		2(9W5x1.00W5) 6(9W8X2.00W5)	2(9W5x1.00W5) 7(9W8X2.50W5)	2(9W5x1.00W5) 7(9W8X2.50W5) 1(9W11X3.00W8)	2(9W5x1.50W5) 7(9W8X3.00W5) 3(9W8X3.00W8)	
			2(9W5x1.00W5) 4(9W8X2.00W5)					

Furnish As Submitted Prepare And Resubmit
 Furnish As Corrected Submit Specified Item

Corrections or comments made on the shop drawings during this review do not relieve contractor from compliance with requirements of the drawings and specifications. This check is only for review of general conformance with the design concept of the project and general compliance with the information given in the contract documents. The contractor is responsible for confirming and correlating all quantities and dimensions; selecting fabrication processes and techniques of construction; coordinating his work with that of all other trades; and performing his work in a safe and satisfactory manner.

CAHYER & BURGESS, INC.
 Date 3/20/07 By SKW

Provide Utah Registered Engineer Stamp

- GENERAL NOTES:**
- ELEVATIONS SHOWN ABOVE WALL ARE TO TOP OF COPING.
 - ELEVATIONS SHOWN BELOW WALL ARE TO TOP OF CAST-IN-PLACE LEVELING PAD.
 - SEE THE GENERAL PROVISIONS FOR EARTH RETAINING STRUCTURES FOR MATERIAL AND CONSTRUCTION SPECIFICATIONS.

- SOIL REINFORCEMENT LENGTHS**
- MESH LENGTH SHOWN ABOVE BASE WIDTH LINE.
 - HEAVY VERTICAL LINES SEPARATE ZONES OF DIFFERENT MESH LENGTHS / DESIGN HEIGHTS.
 - MESH TYPES SHOWN BELOW MESH LENGTH LINE. (SEE STANDARD DETAIL SHEET FOR MESH KEY)
 - THE NUMBER PRECEDING THE MESH TYPE INDICATES THE NUMBER OF LAYERS OF THAT TYPE REQUIRED.

MSE WALL R-477R: ELEVATIONS

(FRONT FACE SHOWN)

FOR QUESTIONS OR INFORMATION PLEASE CONTACT ANDREW MECKLER AT THE MAIN OFFICE

THE DESIGN OF THESE MSE PLUS_w WALLS IS BASED ON THE ASSUMPTION THAT ALL MATERIALS AND METHODS OF CONSTRUCTION CONFORM TO THE SPECIFICATIONS FOR MSE PLUS_w RETAINING WALLS, THE PROJECT BID DOCUMENTS.

THESE DRAWINGS, AS WELL AS THE DESIGN, ARE CERTIFIED WITH RESPECT TO THE INTERNAL STABILITY OF THE MSE PLUS_w STRUCTURES ONLY. EXTERNAL STABILITY INCLUDING, BUT NOT LIMITED TO, SLOPE AND FOUNDATION STABILITY IS THE RESPONSIBILITY OF THE OWNER AND THE ENGINEER FOR THE OWNER.

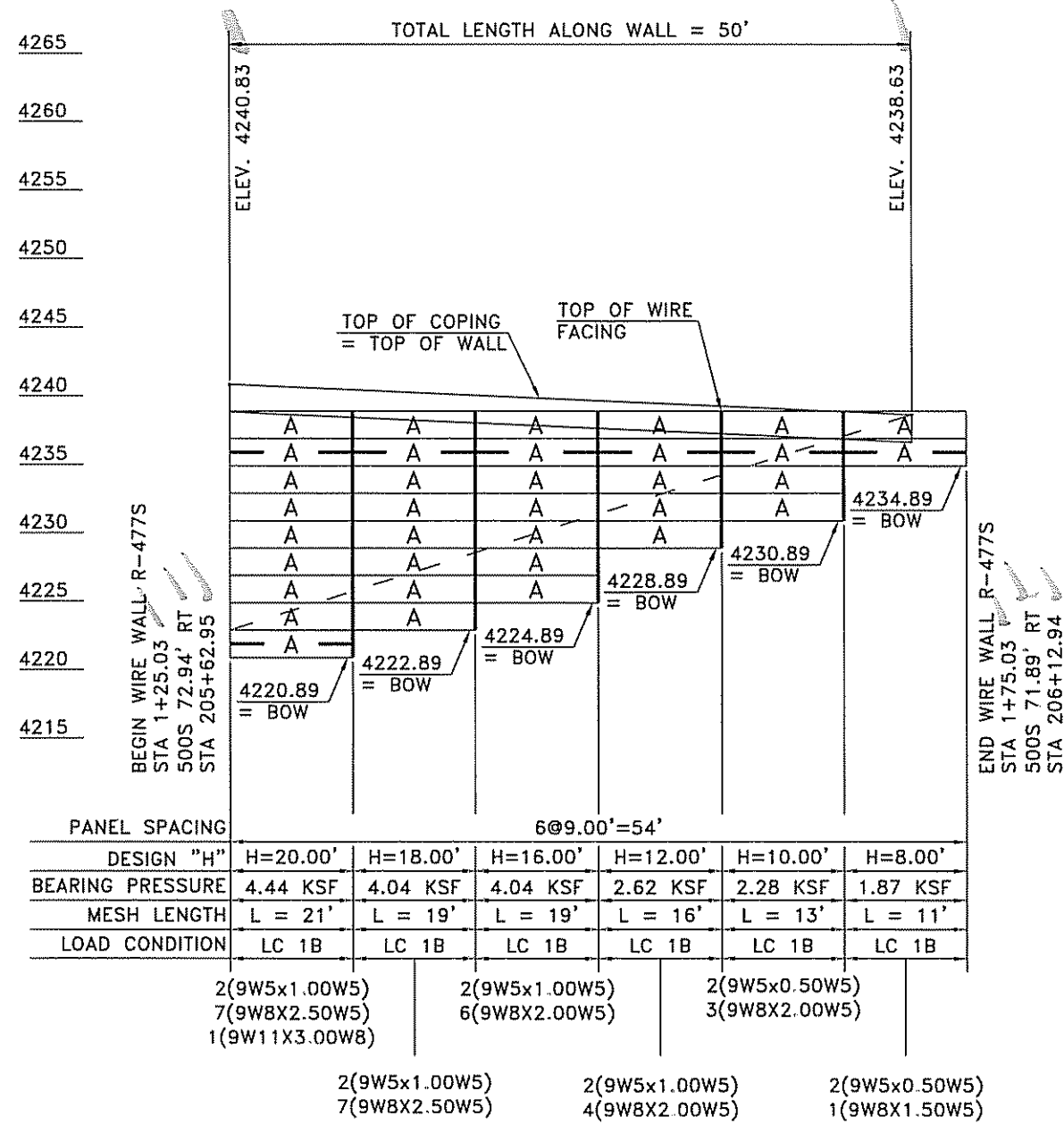
NO.	DATE	BY



SPECIALIZING IN CONSTRUCTION PRODUCTS
SSL
 MAIN OFFICE
 4740 Scotts Valley Dr., Suite 100
 Scotts Valley, California 95665
 Phone 931 431 9300
 Fax 931 431 9340

ELEVATIONS: WALL R
 LEGACY PARKWAY SEGMENT 1
 UTAH DEPARTMENT OF TRANSPORTATION
 SALT LAKE CITY, UTAH
 PROJECT No. SP-0067(10)4

Date: **03/13/07**
 Scale: **NTS**
 Drawn By: **AJM**
 Job: **2506**
 Sheet: **WW-8**
 Sheet **8** of **15**



Furnish As Submitted
 Furnish As Corrected
 Review And Resubmit
 Submit Specifications

Corrections or comments made on this drawing during this review do not take precedence over compliance with requirements of all applicable codes and specifications. This check is only for general conformance with the general contract documents and general correspondence with project specifications. The contractor is responsible for confirming all dimensions, including, but not limited to, mesh length, spacing, and spacing of reinforcement bars, with that of all other drawings and specifications and all applicable manufacturing processes.

CARTER & BUTGESS, INC.
 Date 3/20/07 By *skw*

Provide Utah Registered Engineer Stamp

GENERAL NOTES:
 1. ELEVATIONS SHOWN ABOVE WALL ARE TO TOP OF COPING.
 2. ELEVATIONS SHOWN BELOW WALL ARE TO TOP OF CAST-IN-PLACE LEVELING PAD.
 3. SEE THE GENERAL PROVISIONS FOR EARTH RETAINING STRUCTURES FOR MATERIAL AND CONSTRUCTION SPECIFICATIONS.

SOIL REINFORCEMENT LENGTHS
 1. MESH LENGTH SHOWN ABOVE BASE WIDTH LINE.
 2. HEAVY VERTICAL LINES SEPARATE ZONES OF DIFFERENT MESH LENGTHS / DESIGN HEIGHTS.
 3. MESH TYPES SHOWN BELOW MESH LENGTH LINE. (SEE STANDARD DETAIL SHEET FOR MESH KEY)
 4. THE NUMBER PRECEDING THE MESH TYPE INDICATES THE NUMBER OF LAYERS OF THAT TYPE REQUIRED.

MSE WALL R-477S: ELEVATIONS
(FRONT FACE SHOWN)

FOR QUESTIONS OR INFORMATION PLEASE CONTACT ANDREW HECKLER AT THE MAIN OFFICE

THE DESIGN OF THESE MSE PLUSSM WALLS IS BASED ON THE ASSUMPTION THAT ALL MATERIALS AND METHODS OF CONSTRUCTION CONFORM TO THE SPECIFICATIONS FOR MSE PLUSSM RETAINING WALLS, THE PROJECT BID DOCUMENTS.

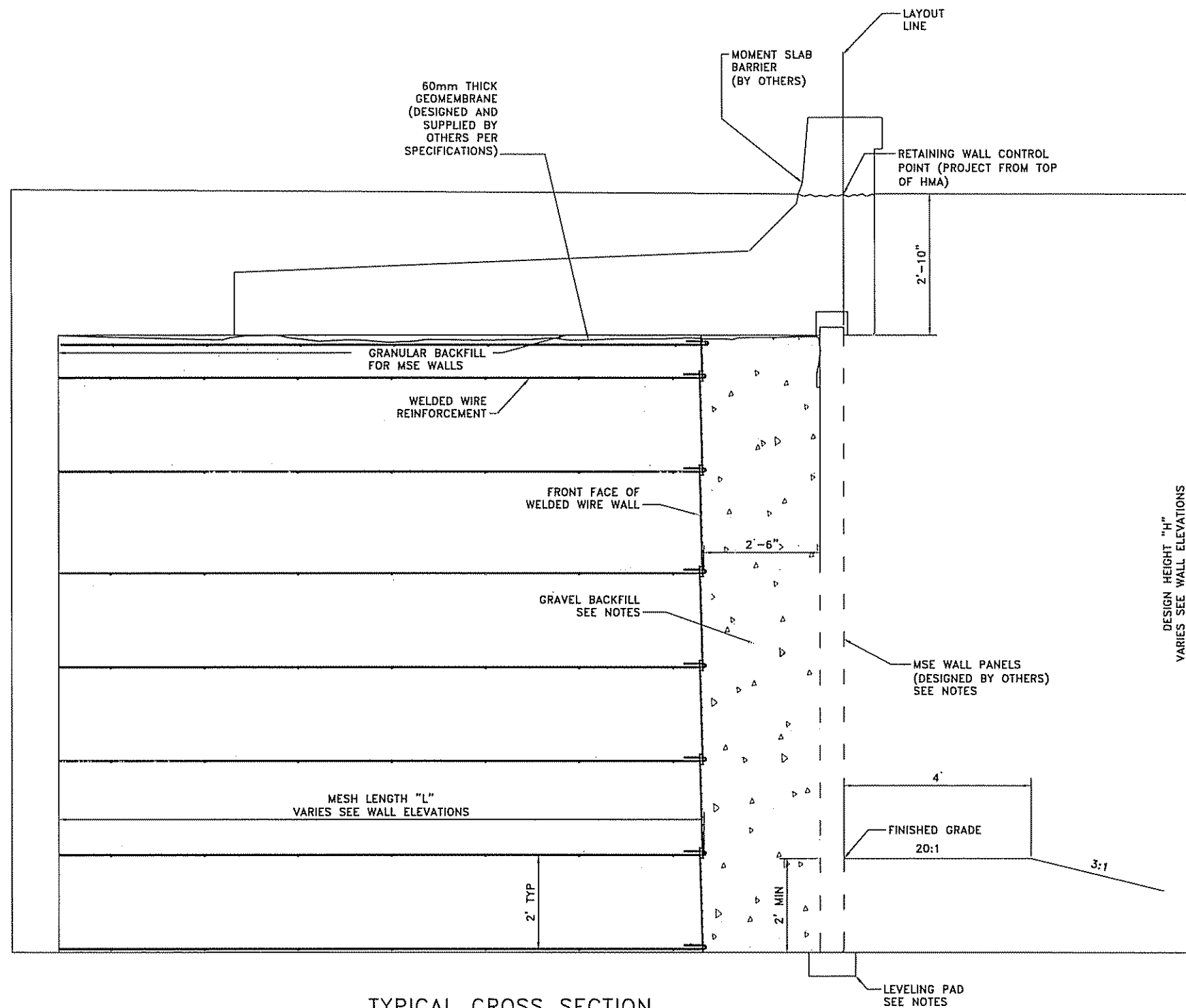
THESE DRAWINGS, AS WELL AS THE DESIGN, ARE CERTIFIED WITH RESPECT TO THE INTERNAL STABILITY OF THE MSE PLUSSM STRUCTURES ONLY. EXTERNAL STABILITY INCLUDING, BUT NOT LIMITED TO, SLOPE AND FOUNDATION STABILITY IS THE RESPONSIBILITY OF THE OWNER AND THE ENGINEER FOR THE OWNER.

BY			
REVISION			
NO.			
DATE			

SSI
 SPECIALIZING IN CONSTRUCTION PRODUCTS
 MAIN OFFICE: 4740 Scallo Valley Dr., Suite 17, Scallo Valley, California 94566
 Phone: 817.430.9300 Fax: 817.430.9340

ELEVATIONS: WALLS
 LEGACY PARKWAY SEGMENT 1
 UTAH DEPARTMENT OF TRANSPORTATION
 SALT LAKE CITY, UTAH
 PROJECT No. SP-0067(10)4

Date: 03/13/07
 Scale: NTS
 Drawn By: AJM
 Job: 2506
 Sheet: **WW-9**
 Sheet 9 of 15



TYPICAL CROSS SECTION
 AT MOMENT SLAB WALLS N AND P
 (SEE CONTRACT PLANS FOR DETAILS NOT SHOWN)

NOTES:

1. INFORMATION SHOWING CONCRETE PANELS, BARRIER/SLAB DETAILS, AND ANY OTHER STAGE 2 DETAILS ARE FOR INFORMATION ONLY. FINAL DESIGN SHALL BE SUBMITTED AT A LATER DATE.
2. CONCRETE PANEL REINFORCEMENT AND LIFTING ANCHOR DESIGN IS THE RESPONSIBILITY OF THE CONTRACTOR AND MUST BE DESIGNED TO HANDLE MAXIMUM BENDING MOMENTS AND GENERAL SERVICE LOADS EXPERIENCED BY THE PANEL ONCE IN PLACE.
3. RIGGING SETUP AND PROCEDURE IS THE RESPONSIBILITY OF THE CONTRACTOR DURING ALL PHASES OF PANEL CASTING AND WALL CONSTRUCTION. IT IS THE CONTRACTOR'S RESPONSIBILITY TO DESIGN AND INSTALL AN ADEQUATE BRACING SYSTEM TO SUPPORT THE PANEL OVER ITS ENTIRE HEIGHT UNTIL CONNECTED TO WIRE FACED MSE RETAINING WALL.
4. DESIGN AND INSTALLATION OF THE CONNECTION OF THE PANEL TO THE WIRE FACED MSE RETAINING WALL IS THE RESPONSIBILITY OF THE CONTRACTOR.

<input type="checkbox"/> Finish As Submitted	<input checked="" type="checkbox"/> Revise And Resubmit
<input type="checkbox"/> Return As Corrected	<input type="checkbox"/> Submit Specified Item

Contractor's comments made on the shop drawings during the review do not relieve contractor from compliance with requirements of the drawings and specifications. This check is only for review of general compliance with the design concept of the project and does not constitute compliance with the information given in the drawings and specifications. The contractor is responsible for checking and correcting all quantities and dimensions, including fabrication processes and methods of construction, coordinating his work with the owner, and performing his work in a satisfactory manner.

CARPER & BURGESS, INC.
 Date 3/20/07 By skw

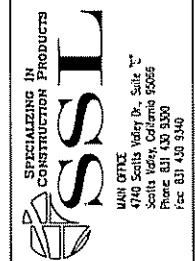
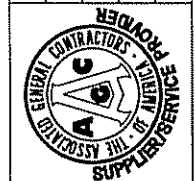
Provide Utah Registered Engineer Stamp

FOR QUESTIONS OR INFORMATION PLEASE CONTACT ANDREW MECKLER AT THE MAIN OFFICE

THE DESIGN OF THESE MSE PLUSSM WALLS IS BASED ON THE ASSUMPTION THAT ALL MATERIALS AND METHODS OF CONSTRUCTION CONFORM TO THE SPECIFICATIONS FOR MSE PLUSSM RETAINING WALLS, THE PROJECT BID DOCUMENTS

THESE DRAWINGS, AS WELL AS THE DESIGN, ARE CERTIFIED WITH RESPECT TO THE INTERNAL STABILITY OF THE MSE PLUSSM STRUCTURES ONLY. EXTERNAL STABILITY INCLUDING, BUT NOT LIMITED TO, SLOPE AND FOUNDATION STABILITY IS THE RESPONSIBILITY OF THE OWNER AND THE ENGINEER FOR THE OWNER.

NO.	DATE	REVISION	BY



TYPICAL CROSS SECTIONS - 1 OF 4
 LEGACY PARKWAY SEGMENT 1
 UTAH DEPARTMENT OF TRANSPORTATION
 SALT LAKE CITY, UTAH
 PROJECT No. SP-0067(10)4

Date: 03/13/07

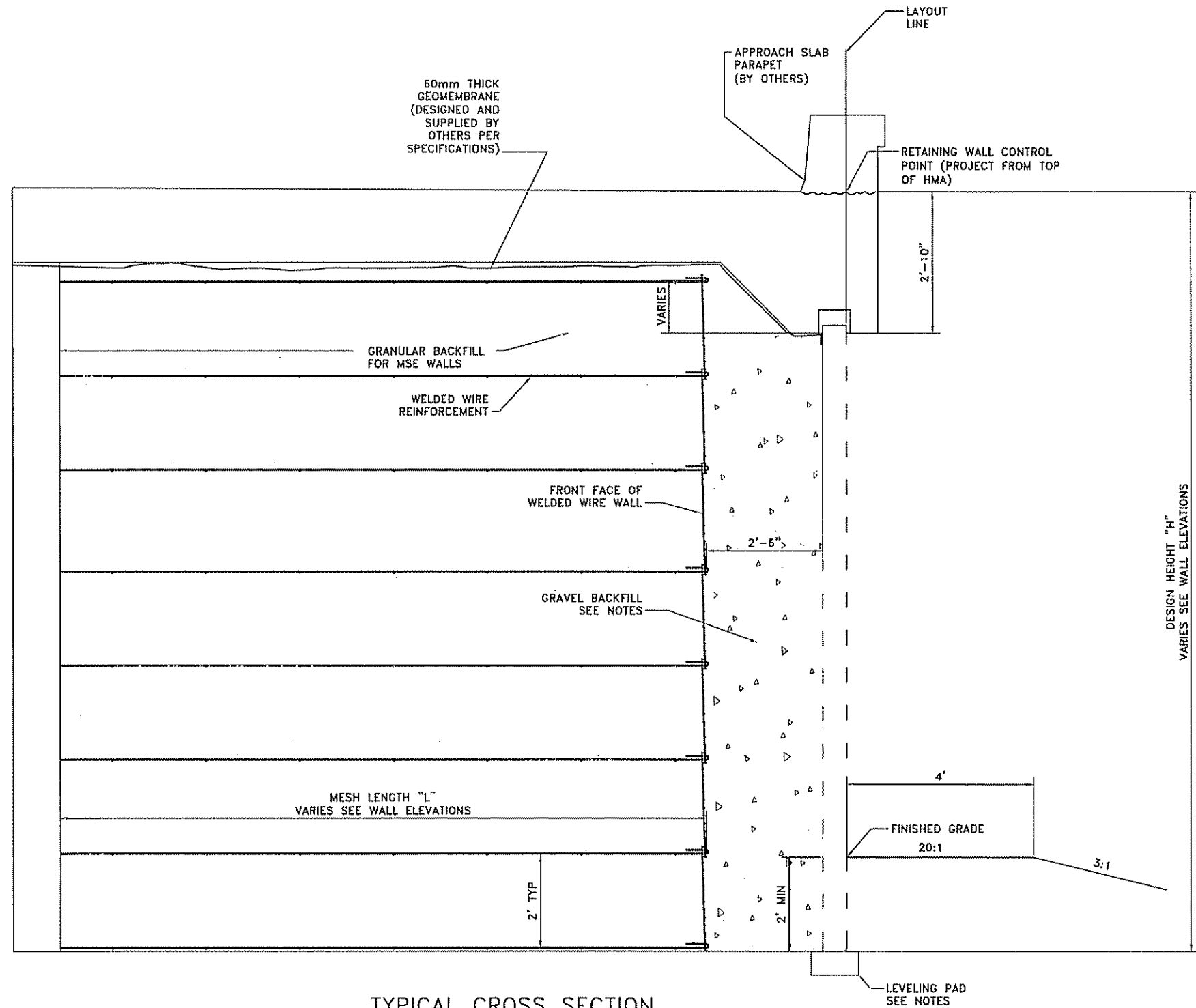
Scale: NTS

Drawn By: AJM

Job: 2506

Sheet: WW-10

Sheet 10 of 15



TYPICAL CROSS SECTION
 AT APPROACH SLAB WALLS N AND P
 (SEE CONTRACT PLANS FOR DETAILS NOT SHOWN)

NOTES:

1. INFORMATION SHOWING CONCRETE PANELS, BARRIER/SLAB DETAILS, AND ANY OTHER STAGE 2 DETAILS ARE FOR INFORMATION ONLY. FINAL DESIGN SHALL BE SUBMITTED AT A LATER DATE.
2. CONCRETE PANEL REINFORCEMENT AND LIFTING ANCHOR DESIGN IS THE RESPONSIBILITY OF THE CONTRACTOR AND MUST BE DESIGNED TO HANDLE MAXIMUM BENDING MOMENTS AND GENERAL SERVICE LOADS EXPERIENCED BY THE PANEL ONCE IN PLACE.
3. RIGGING SETUP AND PROCEDURE IS THE RESPONSIBILITY OF THE CONTRACTOR DURING ALL PHASES OF PANEL CASTING AND WALL CONSTRUCTION. IT IS THE CONTRACTOR'S RESPONSIBILITY TO DESIGN AND INSTALL AN ADEQUATE BRACING SYSTEM TO SUPPORT THE PANEL OVER ITS ENTIRE HEIGHT UNTIL CONNECTED TO WIRE FACED MSE RETAINING WALL.
4. DESIGN AND INSTALLATION OF THE CONNECTION OF THE PANEL TO THE WIRE FACED MSE RETAINING WALL IS THE RESPONSIBILITY OF THE CONTRACTOR.

Furnish As Submitted
 Revise And Resubmit
 Furnish As Corrected
 Submit Specified Item

Corrections or comments made on the shop drawings during this review do not release contractor from compliance with requirements of the drawings and specifications. The contractor shall be responsible for confirming with the design professional that all and general conditions of the contract documents and the contract drawings are understood and accepted in full for construction. The contractor shall be responsible for determining the accuracy of the dimensions and quantities shown on the drawings and specifications and for providing the necessary data for the design professional to verify the accuracy of the same.

GARY A. BURGESS, INC.
 Date: 3/20/07, *skw*

Provide Registered Engineer in Utah Stamp

FOR QUESTIONS OR INFORMATION PLEASE CONTACT ANDREW MECKLER AT THE MAIN OFFICE

THE DESIGN OF THESE MSE PLUS_w WALLS IS BASED ON THE ASSUMPTION THAT ALL MATERIALS AND METHODS OF CONSTRUCTION CONFORM TO THE SPECIFICATIONS FOR MSE PLUS_w RETAINING WALLS, THE PROJECT BID DOCUMENTS.

THESE DRAWINGS, AS WELL AS THE DESIGN, ARE CERTIFIED WITH RESPECT TO THE INTERNAL STABILITY OF THE MSE PLUS_w STRUCTURES ONLY. EXTERNAL STABILITY INCLUDING, BUT NOT LIMITED TO, SLOPE AND FOUNDATION STABILITY IS THE RESPONSIBILITY OF THE OWNER AND THE ENGINEER FOR THE OWNER.

NO.	DATE	REVISION	BY



SPECIALIZING IN CONSTRUCTION PRODUCTS
SSL
 MAIN OFFICE: 4740 Scotts Valley Dr., Suite 100, Scotts Valley, California 95066
 Phone: 831.439.9300 Fax: 831.439.9340

TYPICAL CROSS SECTIONS - 2 OF 4
 LEGACY PARKWAY SEGMENT 1
 UTAH DEPARTMENT OF TRANSPORTATION
 SALT LAKE CITY, UTAH
 PROJECT No. SP-0067(10)4

Date: 03/13/07

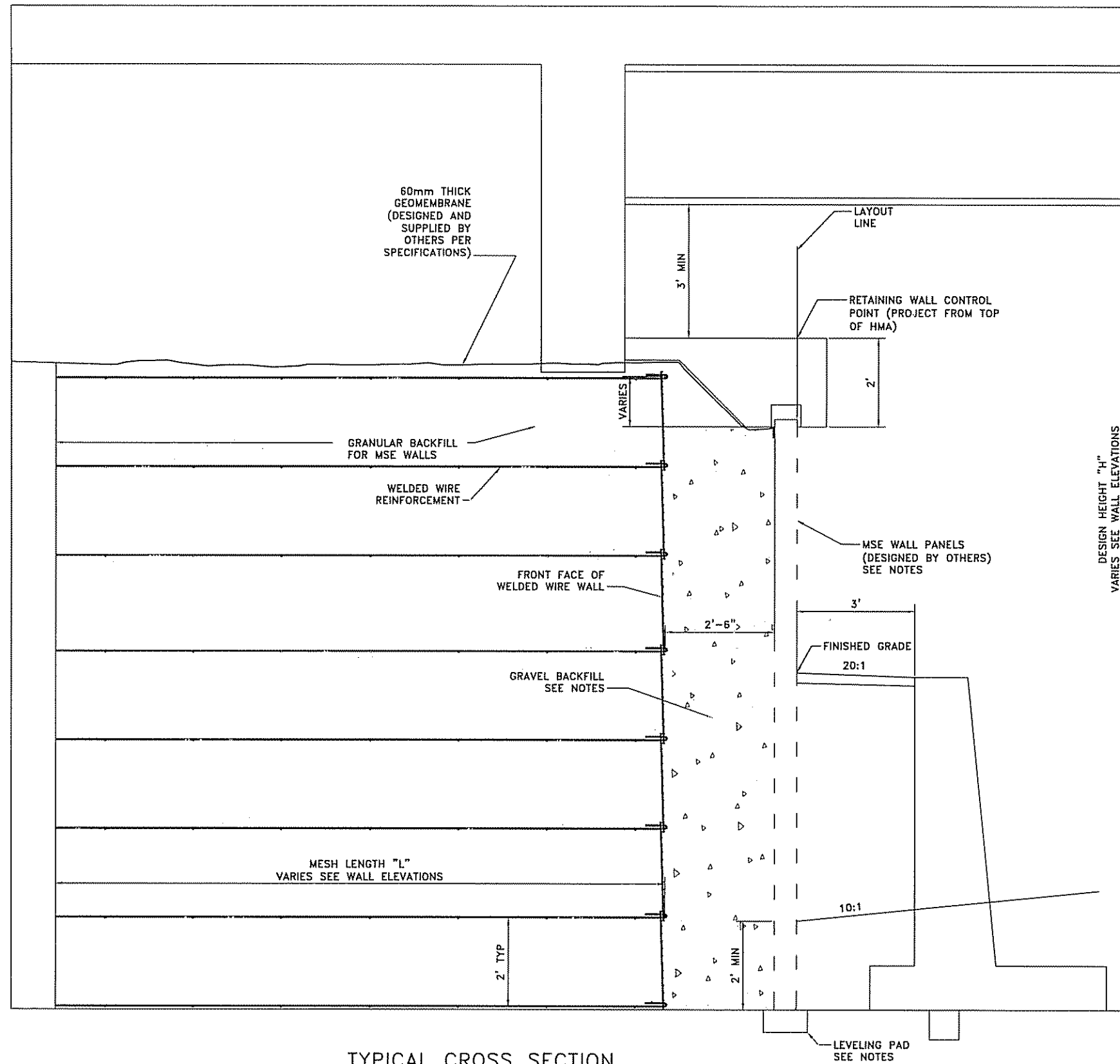
Scale: NTS

Drawn By: AJM

Job: 2506

Sheet: WW-11

Sheet 11 of 15



TYPICAL CROSS SECTION
 AT ABUTMENT WALLS N AND P
 (SEE CONTRACT PLANS FOR DETAILS NOT SHOWN)

NOTES:

1. INFORMATION SHOWING CONCRETE PANELS, BARRIER/SLAB DETAILS, AND ANY OTHER STAGE 2 DETAILS ARE FOR INFORMATION ONLY. FINAL DESIGN SHALL BE SUBMITTED AT A LATER DATE.
2. CONCRETE PANEL REINFORCEMENT AND LIFTING ANCHOR DESIGN IS THE RESPONSIBILITY OF THE CONTRACTOR AND MUST BE DESIGNED TO HANDLE MAXIMUM BENDING MOMENTS AND GENERAL SERVICE LOADS EXPERIENCED BY THE PANEL ONCE IN PLACE.
3. RIGGING SETUP AND PROCEDURE IS THE RESPONSIBILITY OF THE CONTRACTOR DURING ALL PHASES OF PANEL CASTING AND WALL CONSTRUCTION. IT IS THE CONTRACTOR'S RESPONSIBILITY TO DESIGN AND INSTALL AN ADEQUATE BRACING SYSTEM TO SUPPORT THE PANEL OVER ITS ENTIRE HEIGHT UNTIL CONNECTED TO WIRE FACED MSE RETAINING WALL.
4. DESIGN AND INSTALLATION OF THE CONNECTION OF THE PANEL TO THE WIRE FACED MSE RETAINING WALL IS THE RESPONSIBILITY OF THE CONTRACTOR.

Furnish As Submitted
 Furnish As Corrected
 Provide And Resubmit
 Submit Specific Item

Check this or comments made on the shop drawings during this review do not relieve contractor from compliance with requirements of the drawings and specifications. This check is only for review of partial compliance with the design content of the project and not for compliance with the information given in the contract documents. The contractor is responsible for confirming and controlling all quantities and dimensions; selecting fabrication processes and techniques of construction; coordinating his work with that of other trades; and performing his work in a safe and satisfactory manner.

CARTER & BURDESS, INC.
 Date 3/20/07 By SKW

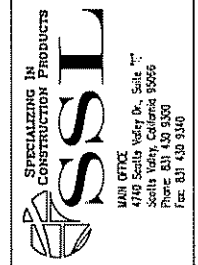
Provide Utah Registered Engineer Stamp

FOR QUESTIONS OR INFORMATION PLEASE CONTACT ANDREW MECKLER AT THE MAIN OFFICE

THE DESIGN OF THESE MSE PLUS™ WALLS IS BASED ON THE ASSUMPTION THAT ALL MATERIALS AND METHODS OF CONSTRUCTION CONFORM TO THE SPECIFICATIONS FOR MSE PLUS™ RETAINING WALLS, THE PROJECT BID DOCUMENTS.

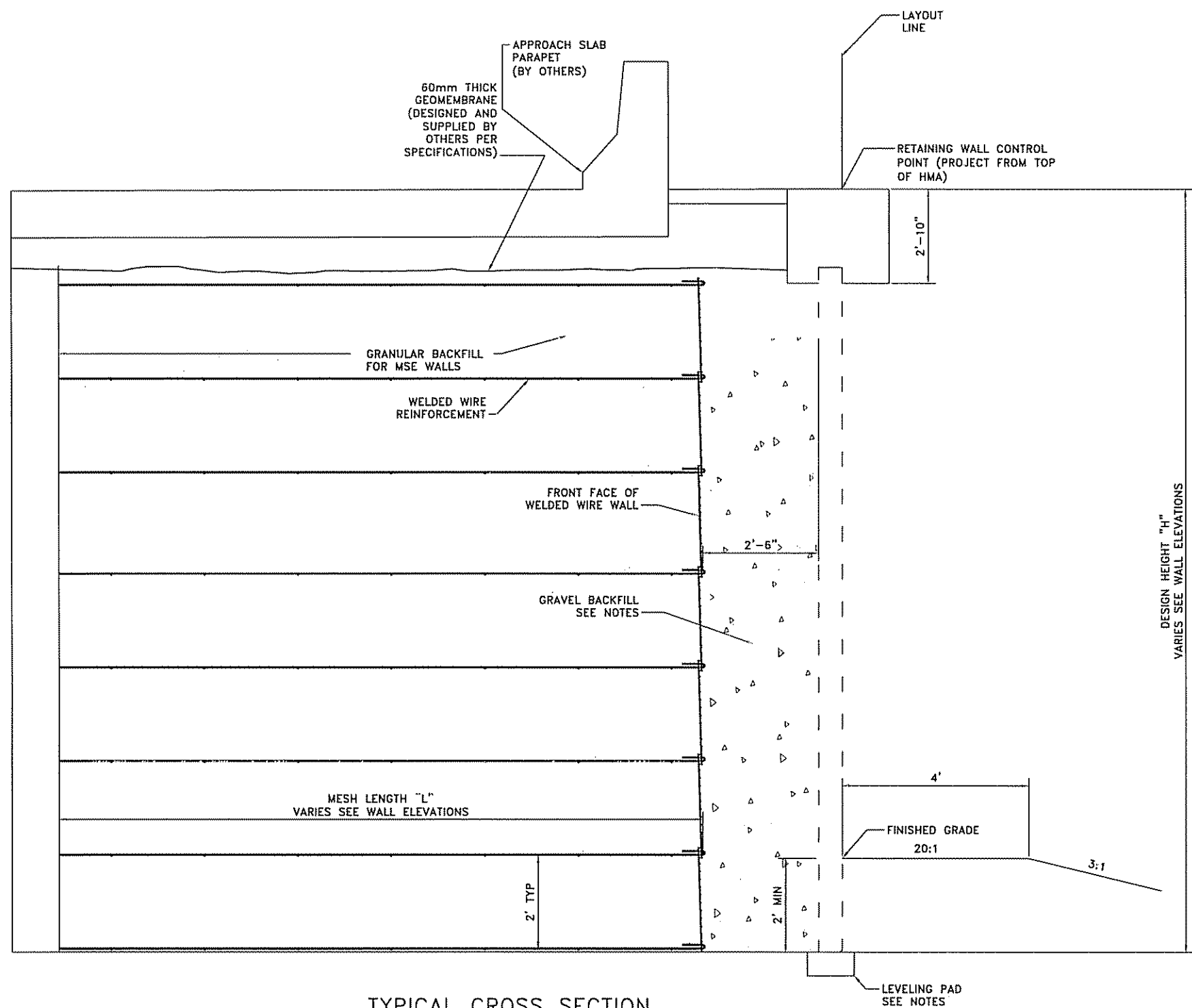
THESE DRAWINGS, AS WELL AS THE DESIGN, ARE CERTIFIED WITH RESPECT TO THE INTERNAL STABILITY OF THE MSE PLUS™ STRUCTURES ONLY. EXTERNAL STABILITY INCLUDING, BUT NOT LIMITED TO, SLOPE AND FOUNDATION STABILITY IS THE RESPONSIBILITY OF THE OWNER AND THE ENGINEER FOR THE OWNER.

NO.	DATE	REVISION	BY



TYPICAL CROSS SECTIONS - 3 OF 4
 LEGACY PARKWAY SEGMENT 1
 UTAH DEPARTMENT OF TRANSPORTATION
 SALT LAKE CITY, UTAH
 PROJECT No. SP-0067(10)4

Date:	03/13/07
Scale:	NTS
Drawn By:	AJM
Job:	2506
Sheet:	WW-12
Sheet	12 of 15



TYPICAL CROSS SECTION
WALLS Q, R, S AND T
(SEE CONTRACT PLANS FOR DETAILS NOT SHOWN)

NOTES:

1. INFORMATION SHOWING CONCRETE PANELS, BARRIER/SLAB DETAILS, AND ANY OTHER STAGE 2 DETAILS ARE FOR INFORMATION ONLY. FINAL DESIGN SHALL BE SUBMITTED AT A LATER DATE.
2. CONCRETE PANEL REINFORCEMENT AND LIFTING ANCHOR DESIGN IS THE RESPONSIBILITY OF THE CONTRACTOR AND MUST BE DESIGNED TO HANDLE MAXIMUM BENDING MOMENTS AND GENERAL SERVICE LOADS EXPERIENCED BY THE PANEL ONCE IN PLACE.
3. RIGGING SETUP AND PROCEDURE IS THE RESPONSIBILITY OF THE CONTRACTOR DURING ALL PHASES OF PANEL CASTING AND WALL CONSTRUCTION. IT IS THE CONTRACTOR'S RESPONSIBILITY TO DESIGN AND INSTALL AN ADEQUATE BRACING SYSTEM TO SUPPORT THE PANEL OVER ITS ENTIRE HEIGHT UNTIL CONNECTED TO WIRE FACED MSE RETAINING WALL.
4. DESIGN AND INSTALLATION OF THE CONNECTION OF THE PANEL TO THE WIRE FACED MSE RETAINING WALL IS THE RESPONSIBILITY OF THE CONTRACTOR.

<input type="checkbox"/> Furnish As Submitted	<input checked="" type="checkbox"/> Revise And Resubmit
<input type="checkbox"/> Furnish As Corrected	<input type="checkbox"/> Submit Specified Item

Corrections or comments made on the shop drawings during this review do not relieve contractor from compliance with requirements of the drawings and specifications. This check is only for review of general compliance with the design concept of the project and general compliance with the information given in the contract documents. The contractor is responsible for estimating and controlling all quantities and dimensions; selecting fabrication processes and methods of construction; coordinating his work with that of all other trades; and performing his work in a satisfactory manner.

CANTER & BURGESS, INC.
Date 3/20/07 By skw

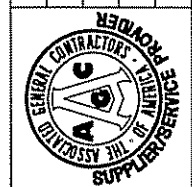
Provide Utah Registered Engineer Stamp

FOR QUESTIONS OR INFORMATION PLEASE CONTACT ANDREW MECKLER AT THE MAIN OFFICE

THE DESIGN OF THESE MSE PLUSTM WALLS IS BASED ON THE ASSUMPTION THAT ALL MATERIALS AND METHODS OF CONSTRUCTION CONFORM TO THE SPECIFICATIONS FOR MSE PLUSTM RETAINING WALLS, THE PROJECT BID DOCUMENTS

THESE DRAWINGS, AS WELL AS THE DESIGN, ARE CERTIFIED WITH RESPECT TO THE INTERNAL STABILITY OF THE MSE PLUSTM STRUCTURES ONLY. EXTERNAL STABILITY INCLUDING, BUT NOT LIMITED TO, SLOPE AND FOUNDATION STABILITY IS THE RESPONSIBILITY OF THE OWNER AND THE ENGINEER FOR THE OWNER.

NO.	DATE	BY



SPECIALIZING IN CONSTRUCTION PRODUCTS

SSL

MAIN OFFICE
4740 South Valley Dr., Suite 107
Salt Lake City, Utah 84106
Phone: 801-488-3300
Fax: 801-488-3340

TYPICAL CROSS SECTIONS - 4 OF 4
LEGACY PARKWAY SEGMENT 1
UTAH DEPARTMENT OF TRANSPORTATION
SALT LAKE CITY, UTAH
PROJECT No. SP-0067(10)4

Date: 03/13/07

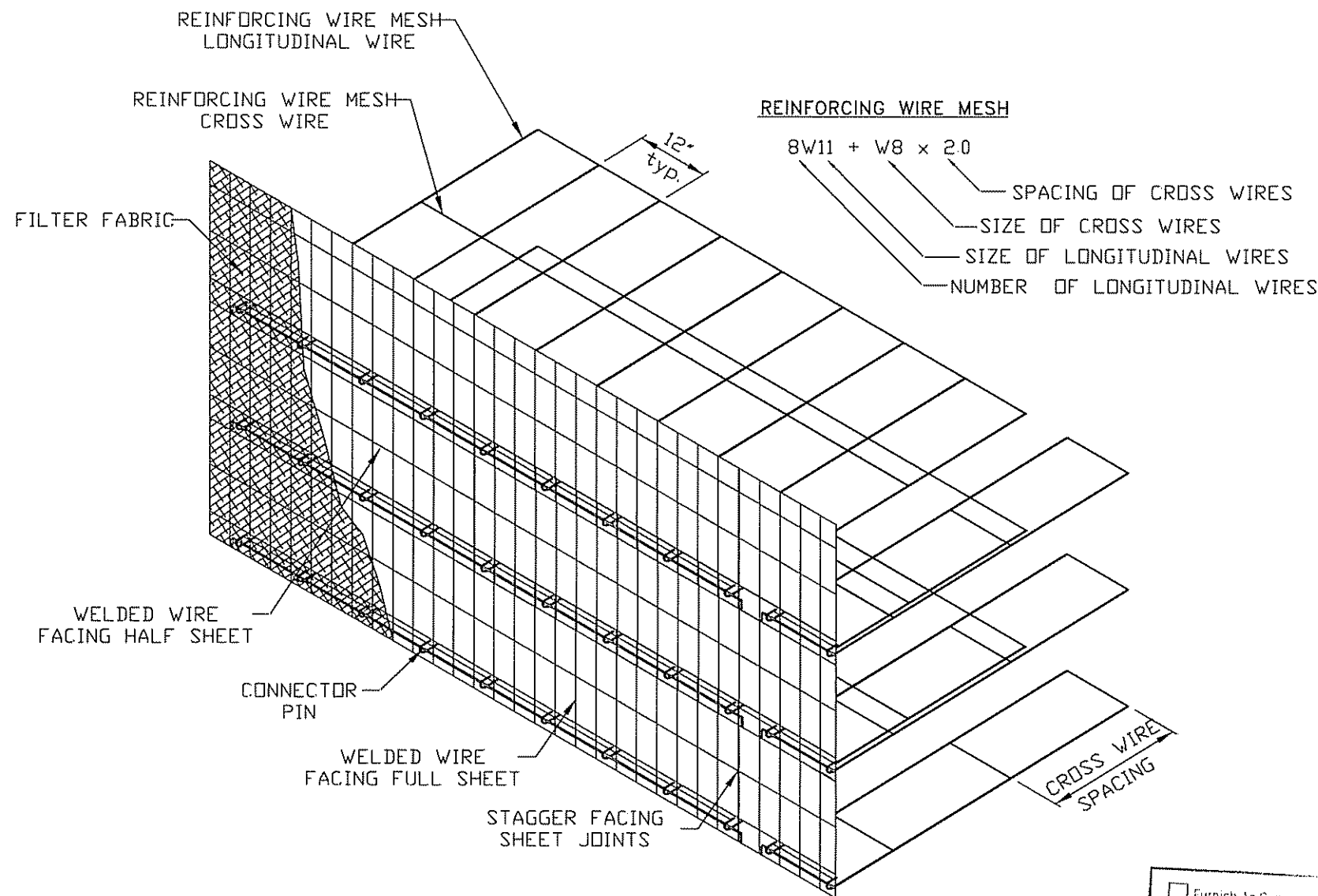
Scale: NTS

Drawn By: AJM

Job: 2506

Sheet: WW-13

Sheet 13 of 15

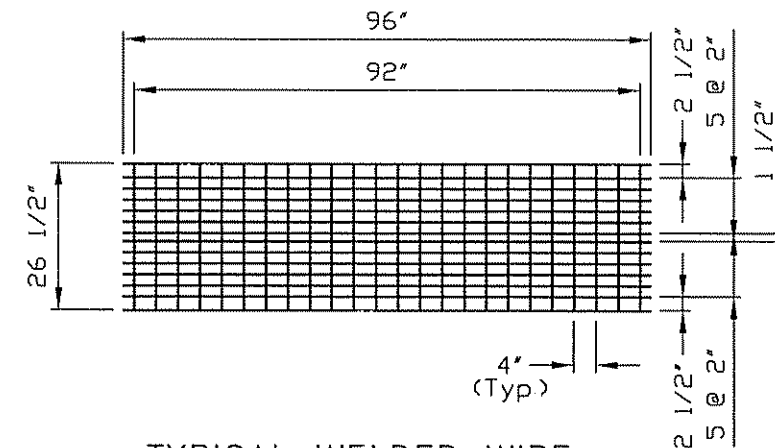


**GENERAL ASSEMBLY DETAIL
WELDED WIRE FACING SHEET**

(Mesh Cross Wires Omitted Behind Facing Sheets For Clarity)

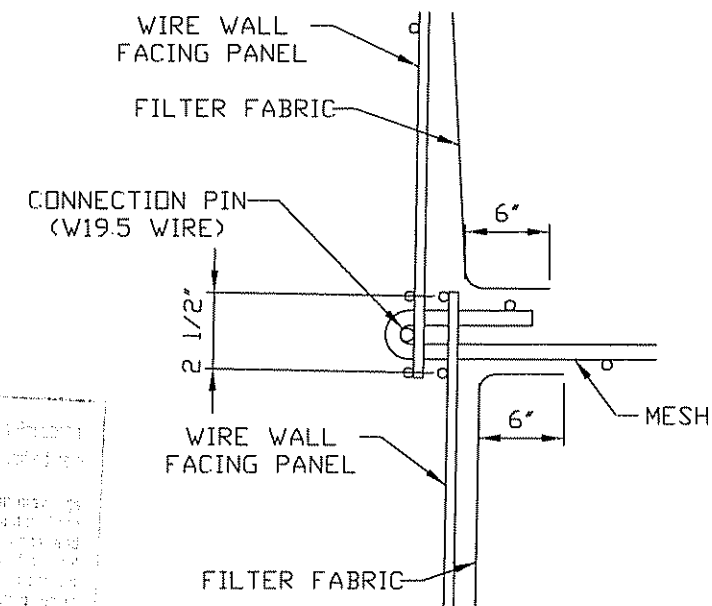
MATERIAL SPECIFICATIONS

1. Soil Reinforcement Shall Be Cold Drawn Steel Wire And Meet The Requirements Of ASTM A-82.
2. Soil Reinforcement Shall Be Welded In Accordance With The Requirements Of ASTM A-185.
3. Galvanize Per ASTM A-123.



TYPICAL WELDED WIRE FACING FULL SHEET TYPE "A"

W5 (0.25Ø) GALVANIZED WIRE



**MESH CONNECTION/
FILTER FABRIC DETAIL**

Furnish As Specified
 Furnish As Shown
 Furnish As Noted
 Furnish As Noted

Corrections or amendments to these drawings during this project shall be noted on this drawing and specifications. All changes shall be noted on this drawing and specifications. The engineer shall be responsible for the accuracy of the drawings and specifications. The contractor shall be responsible for the accuracy of the construction. The engineer shall be responsible for the accuracy of the design. The contractor shall be responsible for the accuracy of the construction. The engineer shall be responsible for the accuracy of the design. The contractor shall be responsible for the accuracy of the construction.

CA. J. S. SURUSSO, INC.
 Date: 3/20/07, SKW



Provide Utah Registered Engineer Stamp

FOR QUESTIONS OR INFORMATION PLEASE CONTACT ANDREW MECKLER AT THE MAIN OFFICE

THE DESIGN OF THESE MSE PLUS™ WALLS IS BASED ON THE ASSUMPTION THAT ALL MATERIALS AND METHODS OF CONSTRUCTION CONFORM TO THE SPECIFICATIONS FOR MSE PLUS™ RETAINING WALLS, THE PROJECT BID DOCUMENTS.

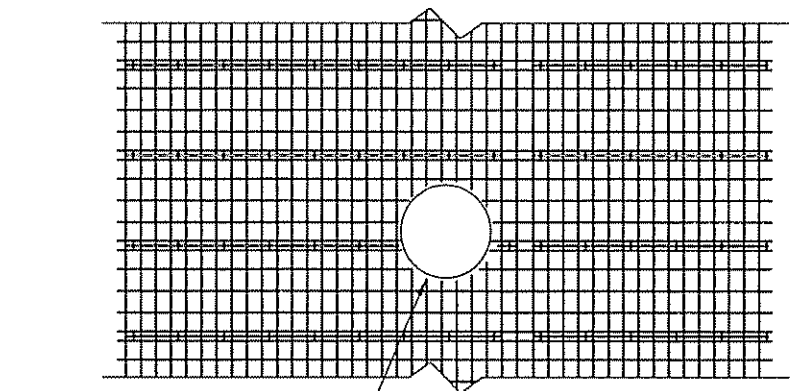
THESE DRAWINGS, AS WELL AS THE DESIGN, ARE CERTIFIED WITH RESPECT TO THE INTERNAL STABILITY OF THE MSE PLUS™ STRUCTURES ONLY. EXTERNAL STABILITY INCLUDING, BUT NOT LIMITED TO, SLOPE AND FOUNDATION STABILITY IS THE RESPONSIBILITY OF THE OWNER AND THE ENGINEER FOR THE OWNER.

NO.	DATE	REVISION	BY

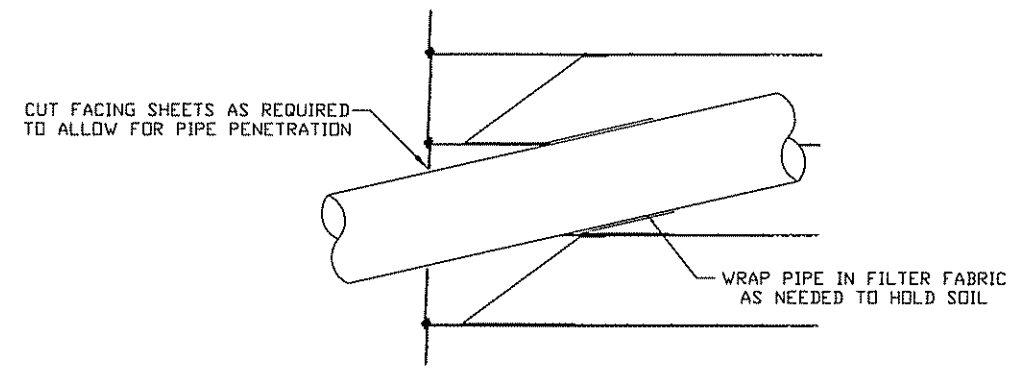

 SPECIALIZING IN CONSTRUCTION PRODUCTS

 MAIN OFFICE: 4740 Scotts Valley Dr., Suite 101, Scotts Valley, California 95066
 Phone: 831.439.9300 Fax: 831.439.9340

STANDARD WIRE WALL DETAILS: 1 OF 2
 LEGACY PARKWAY SEGMENT 1
 UTAH DEPARTMENT OF TRANSPORTATION
 SALT LAKE CITY, UTAH
 PROJECT No. SP-0067(10)4

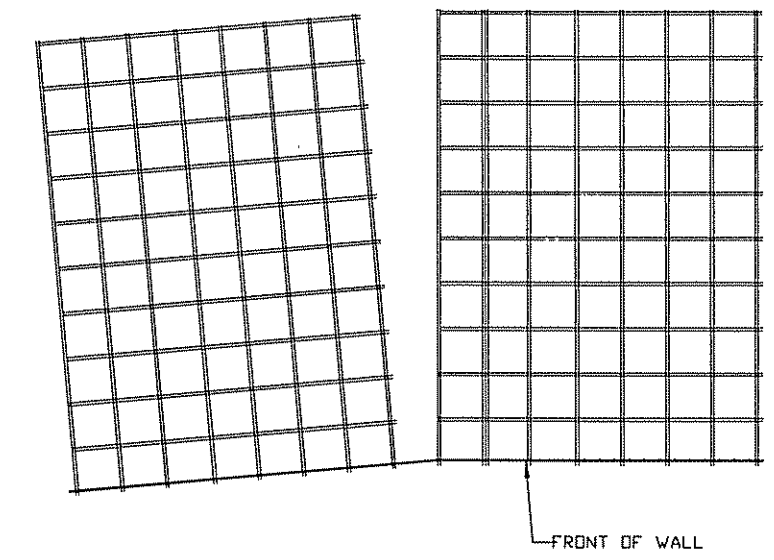
Date: 03/13/07
 Scale: NTS
 Drawn By: AJM
 Job: 2506
 Sheet: WW-14
 Sheet 14 of 15



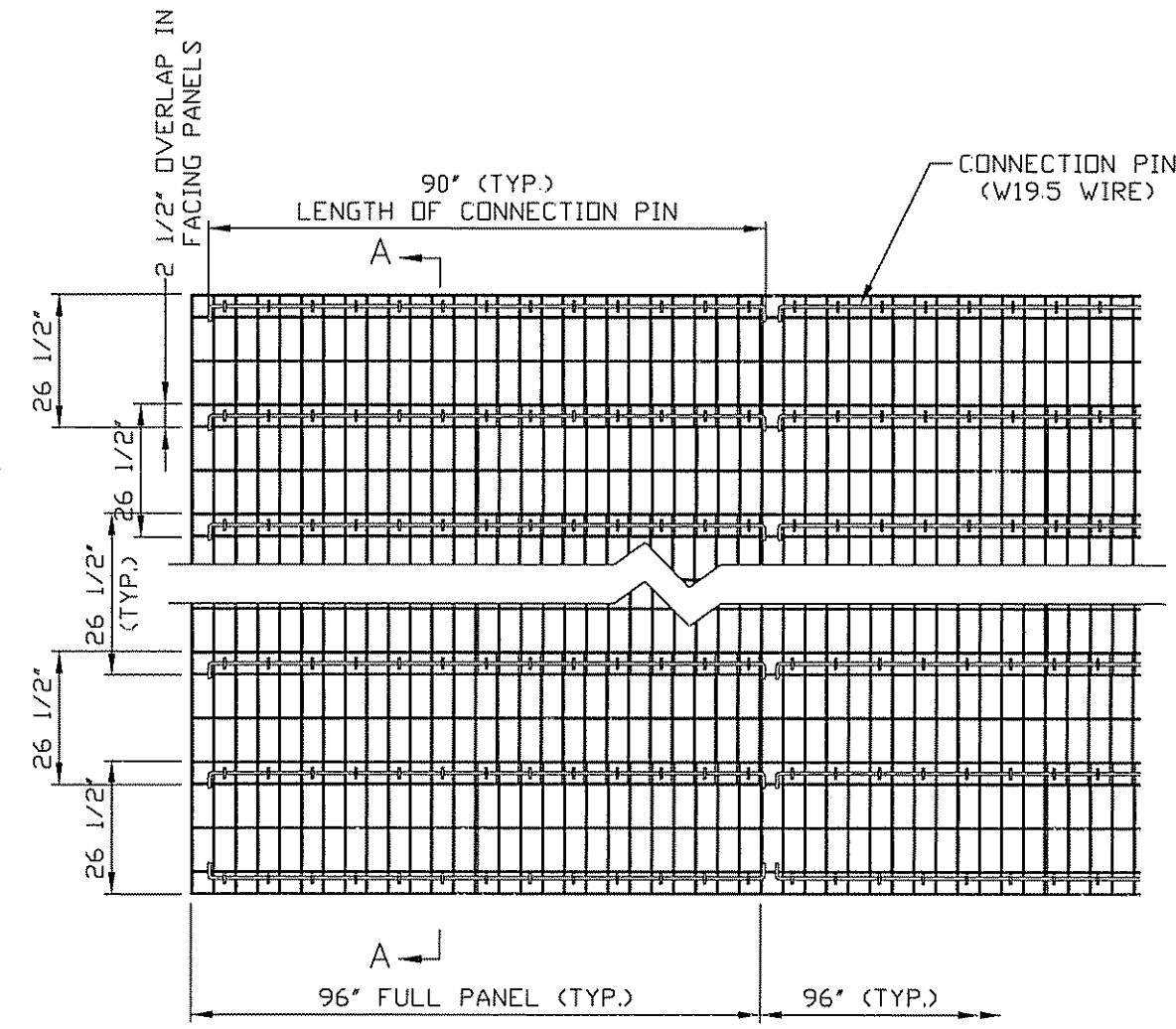
CUT FACING SHEETS AS REQUIRED TO ALLOW FOR PIPE PENETRATION
PIPE PENETRATION DETAIL (ELEVATION VIEW)



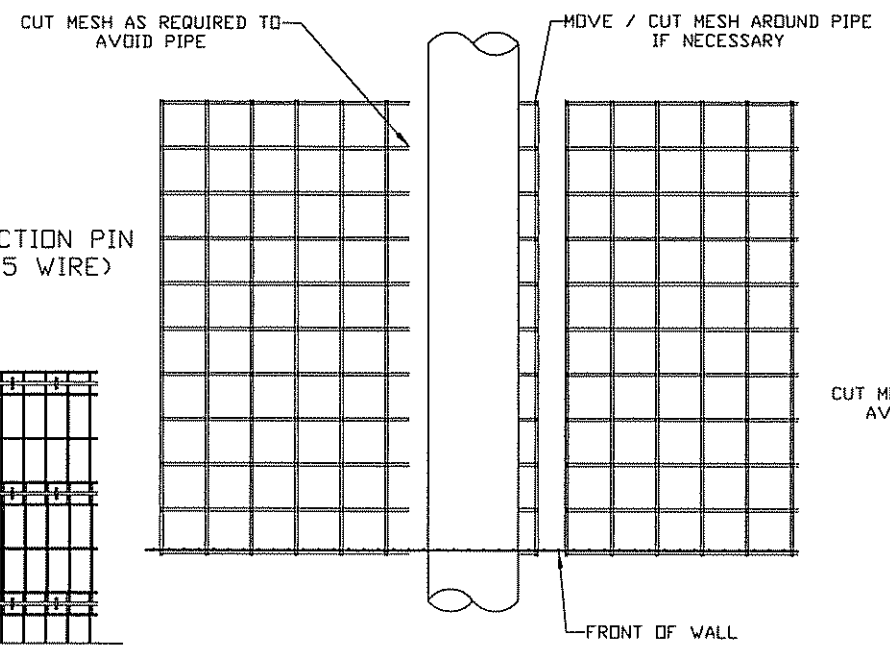
PIPE PENETRATION DETAIL (SECTION VIEW)



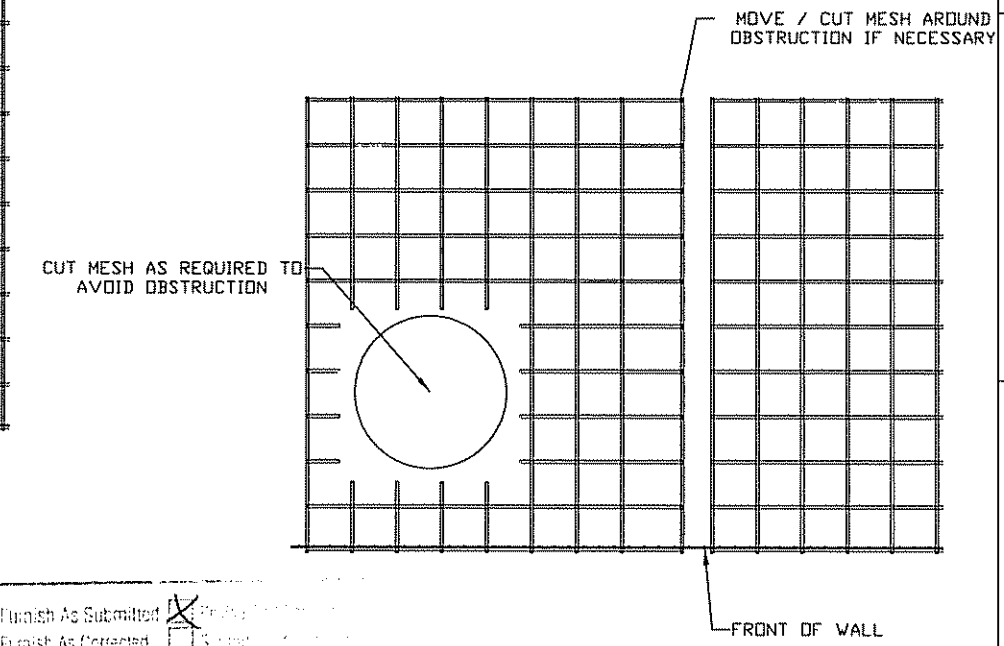
MESH DETAIL FOR CORNER (PLAN VIEW)



WELDED WIRE WALL PARTIAL ELEVATION
 STAGGER FACING SHEET JOINTS
 (FRONT BERM OMITTED FOR CLARITY)



PIPE PENETRATION DETAIL (PLAN VIEW)



PIPE PENETRATION DETAIL (PLAN VIEW)

NOTES:
 SEE CONTRACT PLANS FOR ALL DETAILS NOT SHOWN.
 PIPE SHALL BE PLACED DURING CONSTRUCTION AND MESH SHALL BE MODIFIED TO ACCOMMODATE PIPE.
 CUT MESH OR DAMAGED GALV SHALL BE COATED WITH ZINC RICH PAINT.

Furnish As Submitted Provide As Shown
 Furnish As Corrected Submit As Shown
 Corrections or comments made on these drawings during this review do not constitute an approval of the design. The engineer is not responsible for the design or construction of the project. The engineer is only responsible for the design and construction of the project as shown on these drawings. The engineer is not responsible for the design or construction of the project as shown on these drawings. The engineer is not responsible for the design or construction of the project as shown on these drawings.
CANTER & BUNDSOP, INC.
 Date 3/20/07 by SKW

Provide Utah Registered Engineer Stamp

FOR QUESTIONS OR INFORMATION PLEASE CONTACT ANDREW MECKLER AT THE MAIN OFFICE

THE DESIGN OF THESE MSE PLUS_w WALLS IS BASED ON THE ASSUMPTION THAT ALL MATERIALS AND METHODS OF CONSTRUCTION CONFORM TO THE SPECIFICATIONS FOR MSE PLUS_w RETAINING WALLS, THE PROJECT BID DOCUMENTS

THESE DRAWINGS, AS WELL AS THE DESIGN, ARE CERTIFIED WITH RESPECT TO THE INTERNAL STABILITY OF THE MSE PLUS_w STRUCTURES ONLY. EXTERNAL STABILITY INCLUDING, BUT NOT LIMITED TO, SLOPE AND FOUNDATION STABILITY IS THE RESPONSIBILITY OF THE OWNER AND THE ENGINEER FOR THE OWNER.

NO.	DATE	REVISION	BY
SSI SPECIALIZING IN CONSTRUCTION PRODUCTS MAIN OFFICE: 4740 South Valley Dr., Suite 100, Salt Lake City, Utah 84106 Phone: 801.439.9300 Fax: 801.439.9340			
STANDARD WIRE WALL DETAILS: 2 OF 2 LEGACY PARKWAY SEGMENT 1 UTAH DEPARTMENT OF TRANSPORTATION SALT LAKE CITY, UTAH PROJECT No. SP-0067(10)4			
Date:	03/13/07		
Scale:	NTS		
Drawn By:	AJM		
Job:	2506		
Sheet:	WW-15		
Sheet	15	of 15	