

UTAH

DEPARTMENT OF TRANSPORTATION

SHEET NO.
1

SEE SHEET 1A FOR INDEX TO PLAN

U.S. STANDARD UNITS
(INCH-POUND UNITS)

ALL UNITS IN FEET UNLESS OTHERWISE NOTED

PLANS OF PROPOSED STATE ROAD FEDERAL AID PROJECT

*BRF-0089(77)462
*NH-0089(94)461
*STP-0089(89)462

*BRF-0089(77)462

THREE BRIDGES, US-89 LOGAN CANYON
BRIDGE, REPLACEMENT #D-674 and #D-707 & #D-675
STR. NO. F-729 - LENGTH: 0.322 MILES
STR. NO. F-723 - LENGTH: 0.170 MILES
STR. NO. F-726 - LENGTH: 0.170 MILES
CACHE COUNTY

(STACKED PROJECT)

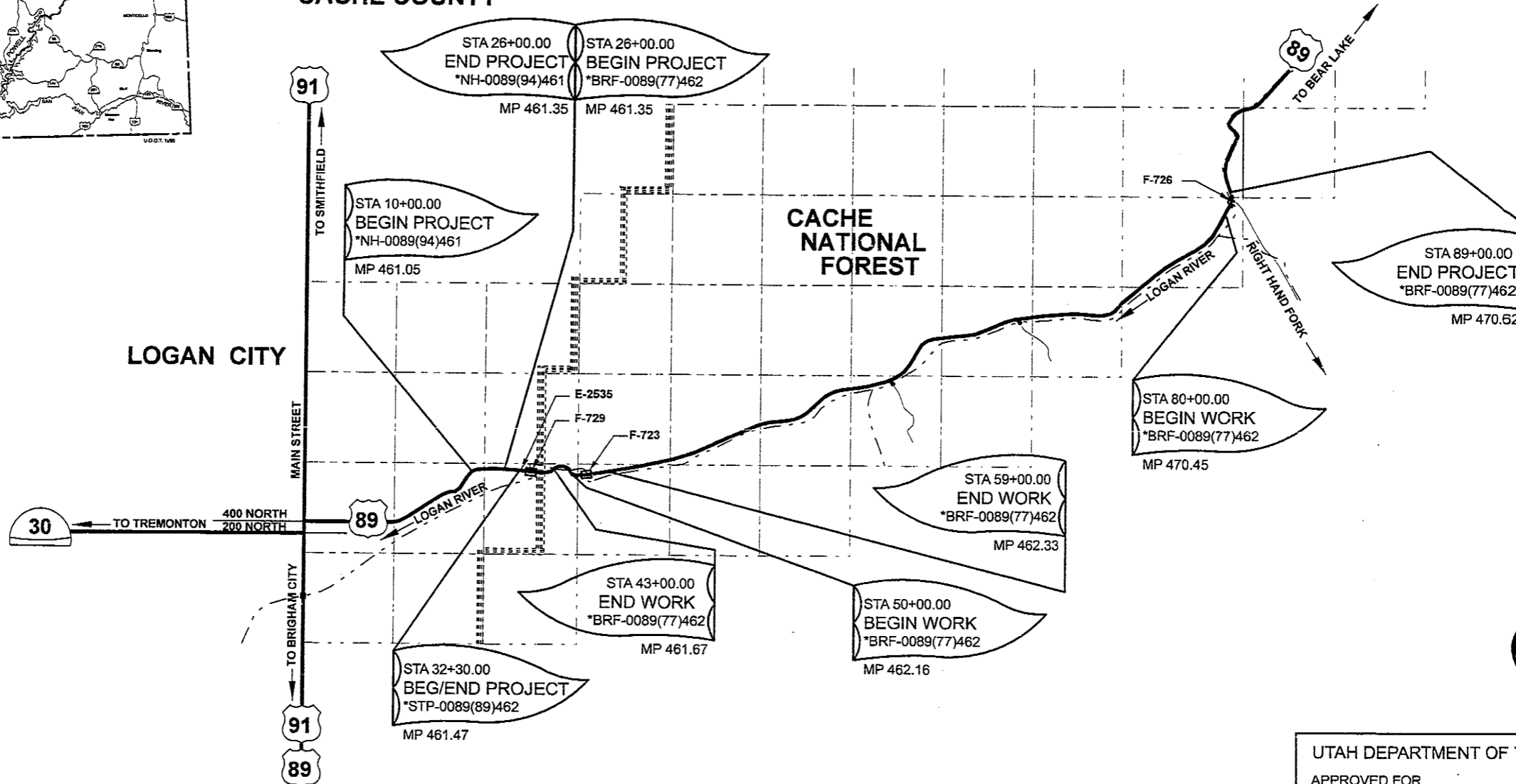
*STP-0089(89)462

LOGAN CANYON UNDERPASS
CONSTRUCT BIKE/PEDESTRIAN FACILITY
STR. NO. E-2535 - LENGTH: 0.000 MILES
CACHE COUNTY

(STACKED PROJECT)

*NH-0089(94)461

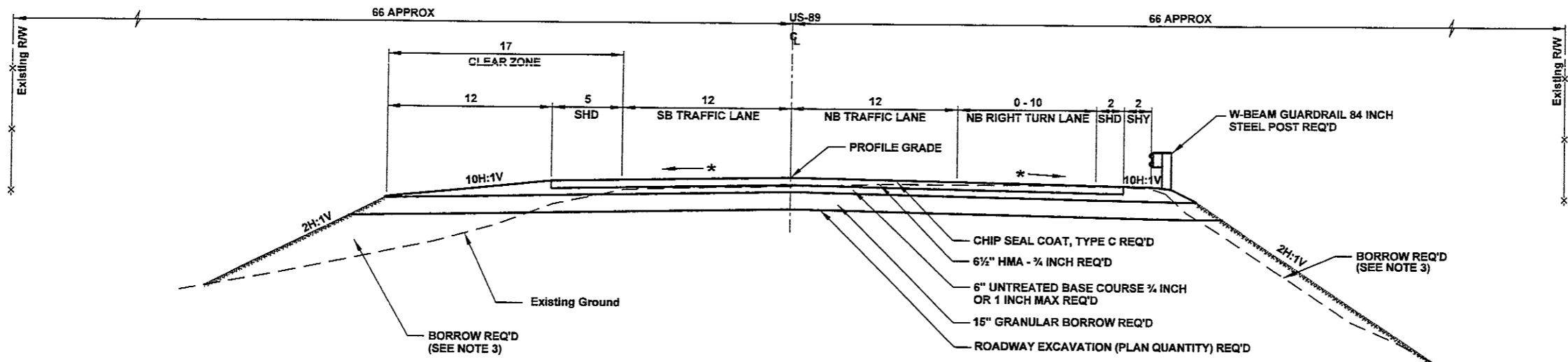
US-89, DUGWAY NEAR LOGAN
COUNTRY CLUB
ROAD - WIDEN TO FOUR LANES
LENGTH: 0.303 MILES
CACHE COUNTY



UTAH DEPARTMENT OF TRANSPORTATION
APPROVED FOR _____
USE BY UDOT _____ 2005

REGION ONE DIRECTOR

04-MAY-2005 4:15:10 PM P:\P\p\dms12480\TitleSheet\New10\10r2005.dgn

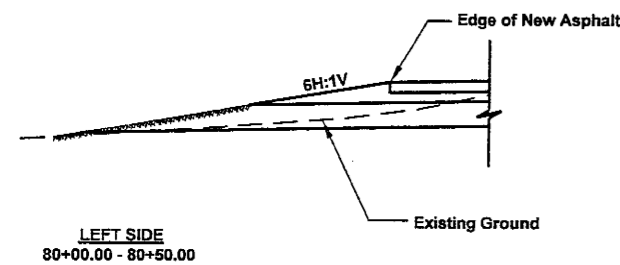


US-89 TYPICAL 12
DESIGN SPEED 45 MPH

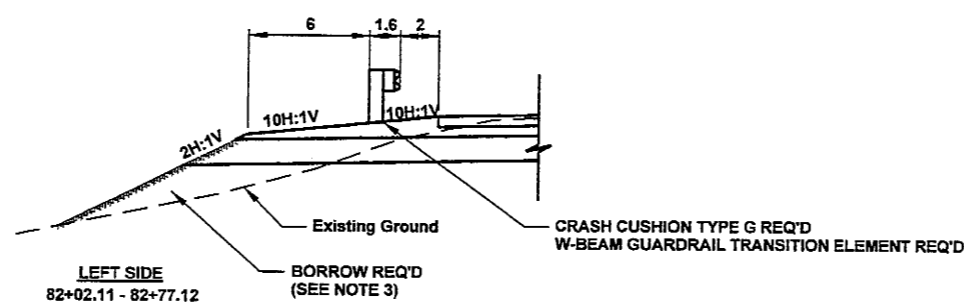
LEFT SIDE 80+00.00 - 82+77.12

RIGHT SIDE 80+00.00 - 82+10.59

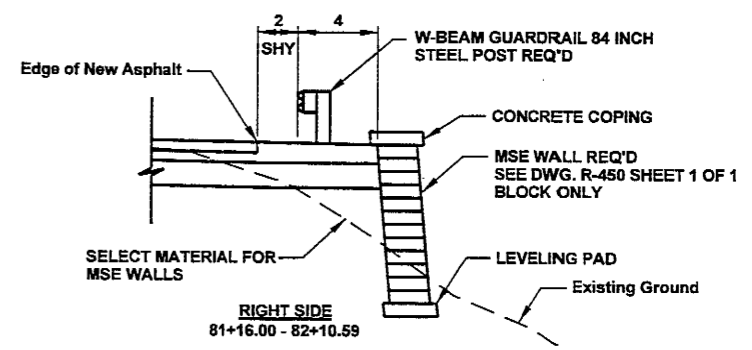
SEE PLAN SHEETS FOR TAPERS AND WIDTHS
* SEE SHEET DT-2 FOR SUPERELEVATION DIAGRAM



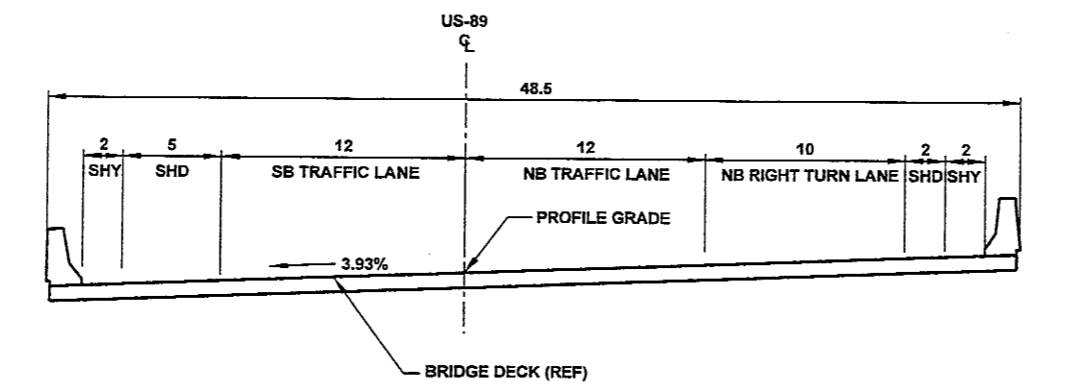
ROADSIDE DETAIL 14



ROADSIDE DETAIL 16



ROADSIDE DETAIL 15



US-89 TYPICAL 13
STRUCTURE #F-726
DESIGN SPEED 45 MPH

LEGEND FOR:

CONTRACTOR FURNISHED TOPSOIL REQ'D

WOOD FIBER MULCH REQ'D

BROADCAST SEED REQ'D

WHEREVER SHOWN

NOTES: 1. NO TOPSOIL ON UNTREATED BASE COURSE.
2. TRANSITION BETWEEN SIDE SLOPE TREATMENTS IN 50 FEET.
3. EMBANKMENT FOR BRIDGE REQ'D. 300' ON EACH SIDE OF PROPOSED STRUCTURES F-723, F-726 AND F-729.

UTAH DEPARTMENT OF TRANSPORTATION		REGION ONE -- OGDEN, UTAH		ROADWAY DESIGN	
DESIGN NO.	04/04	CHECK	RJ	04/05	REVIEW
DESIGN BY	NP	CHECK	RJ	04/05	DATE
DATE	04/05	CHECK	RJ	04/05	BY
APPROVAL	PROJECT DESIGN ENGINEER	APPROVED	DATE	PRECONSTRUCTION ENGINEER	DATE
THREE BRIDGES, US-89 LOGAN CANYON	BRIDGE REPLACEMENT #D-674 and #D-707 & #D-675	TYPICAL SECTION	*BRF-0089(77)462, *NH-0089(94)461	PROJECT NUMBER	*STP-0089(69)462
CACHE	COUNTY	SHEET NO. TS-7			

D:\N_Files\IP_P\Projects\12481\3382_15\97.dgn 04/14/05 2:28:25

STA. 80+00.00
BEGIN WORK
 *BRF-0089(77)462
 N. 528180.13
 E. 1962230.46

SAWCUT ASPHALT
 (FOR INFORMATION ONLY)
 80+00.00 RT 17.5 TO
 80+00.00 LT 14.7
 89+00.00 RT 12.2 TO
 89+00.00 LT 12.2

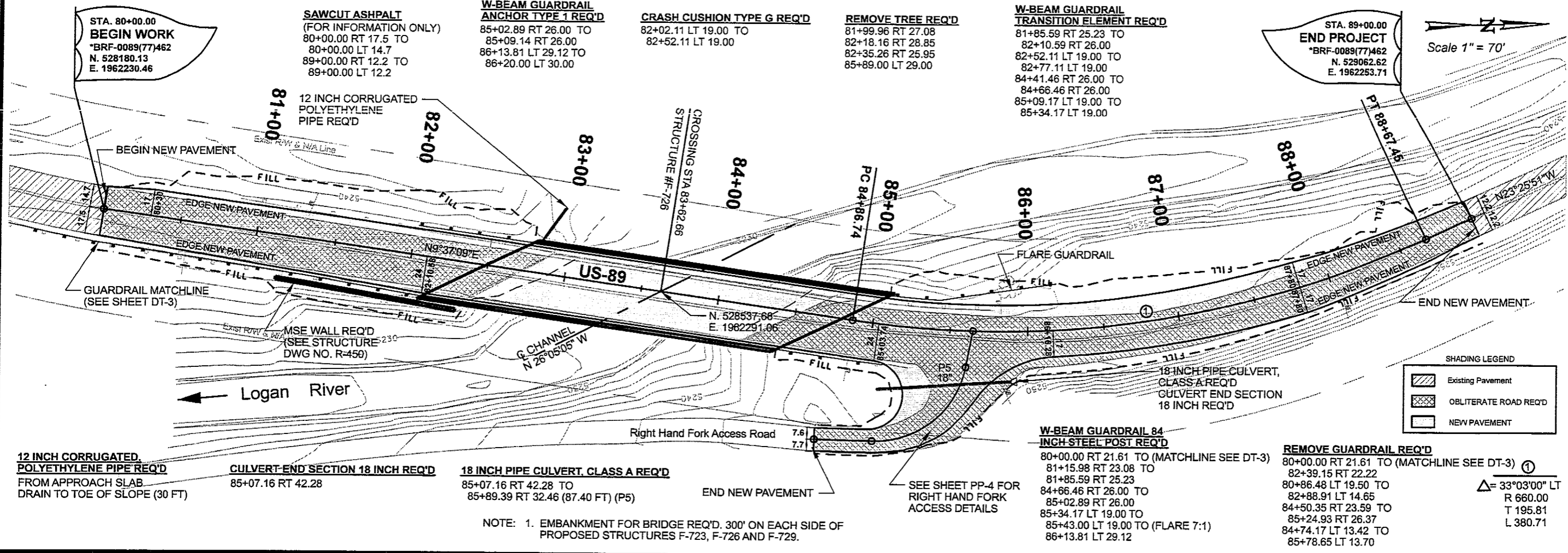
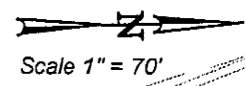
W-BEAM GUARDRAIL
ANCHOR TYPE 1 REQ'D
 85+02.89 RT 26.00 TO
 85+09.14 RT 26.00
 86+13.81 LT 29.12 TO
 86+20.00 LT 30.00

CRASH CUSHION TYPE G REQ'D
 82+02.11 LT 19.00 TO
 82+52.11 LT 19.00

REMOVE TREE REQ'D
 81+99.96 RT 27.08
 82+18.16 RT 28.85
 82+35.26 RT 25.95
 85+89.00 LT 29.00

W-BEAM GUARDRAIL
TRANSITION ELEMENT REQ'D
 81+85.59 RT 25.23 TO
 82+10.59 RT 26.00
 82+52.11 LT 19.00 TO
 82+77.11 LT 19.00
 84+41.46 RT 26.00 TO
 84+66.46 RT 26.00
 85+09.17 LT 19.00 TO
 85+34.17 LT 19.00

STA. 89+00.00
END PROJECT
 *BRF-0089(77)462
 N. 529062.62
 E. 1962253.71



SHADING LEGEND

- Existing Pavement
- OBLITERATE ROAD REQ'D
- NEW PAVEMENT

12 INCH CORRUGATED
POLYETHYLENE PIPE REQ'D
 FROM APPROACH SLAB
 DRAIN TO TOE OF SLOPE (30 FT)

CULVERT-END SECTION 18 INCH REQ'D
 85+07.16 RT 42.28

18 INCH PIPE CULVERT, CLASS A REQ'D
 85+07.16 RT 42.28 TO
 85+89.39 RT 32.46 (87.40 FT) (P5)

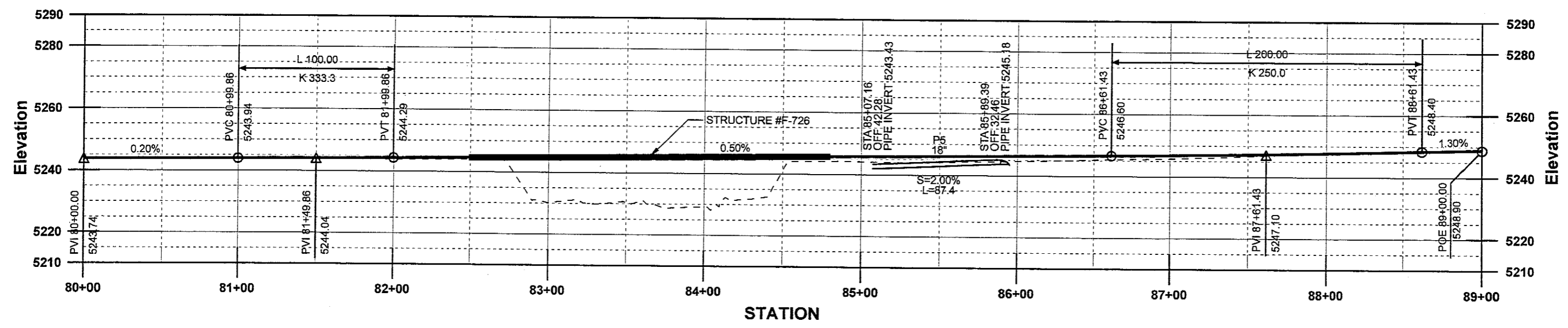
END NEW PAVEMENT

SEE SHEET PP-4 FOR
 RIGHT HAND FORK
 ACCESS DETAILS

W-BEAM GUARDRAIL 84
INCH STEEL POST REQ'D
 80+00.00 RT 21.61 TO (MATCHLINE SEE DT-3)
 81+15.98 RT 23.08 TO
 81+85.59 RT 25.23
 84+66.46 RT 26.00 TO
 85+02.89 RT 26.00
 85+34.17 LT 19.00 TO
 85+43.00 LT 19.00 TO (FLARE 7:1)
 86+13.81 LT 29.12

REMOVE GUARDRAIL REQ'D
 80+00.00 RT 21.61 TO (MATCHLINE SEE DT-3) ①
 82+39.15 RT 22.22
 80+86.48 LT 19.50 TO
 82+88.91 LT 14.65
 84+50.35 RT 23.59 TO
 85+24.93 RT 26.37
 84+74.17 LT 13.42 TO
 85+78.65 LT 13.70

NOTE: 1. EMBANKMENT FOR BRIDGE REQ'D. 300' ON EACH SIDE OF PROPOSED STRUCTURES F-723, F-726 AND F-729.



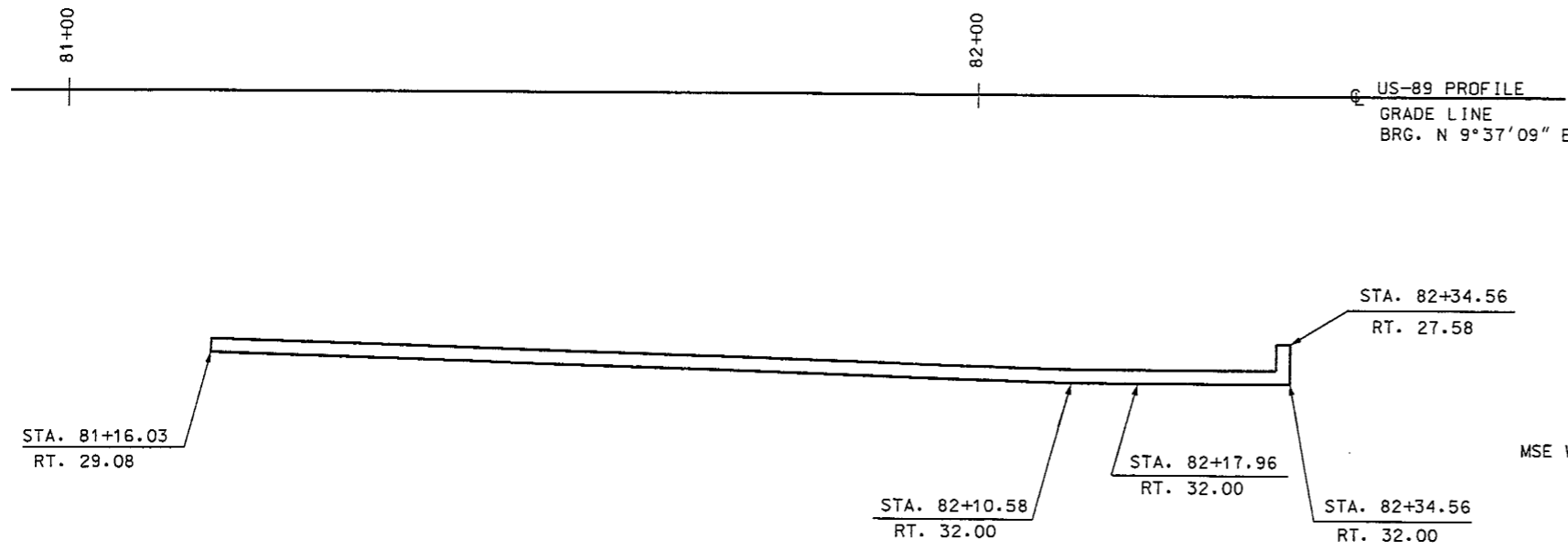
PROFILE
US-89 RIGHT HAND FORK

UTAH DEPARTMENT OF TRANSPORTATION			
REGION ONE -- OGDEN, UTAH			
ROADWAY DESIGN			
THREE BRIDGES, US-89 LOGAN CANYON	BRIDGE REPLACEMENT	#D-674 and #D-707 & #D-675	PLAN AND PROFILE SHEET
		*BRF-0089(77)462, *NH-0089(94)461	
		PROJECT NUMBER & *STP-0089(89)462	
CACHE COUNTY			
SHEET NO. PP-2			

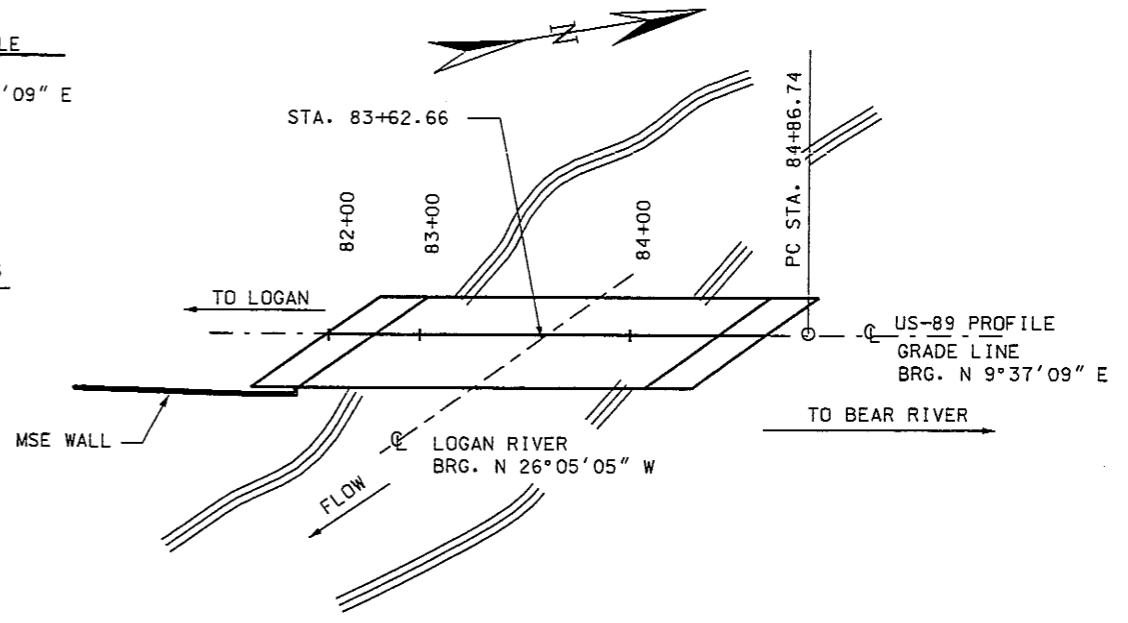
DESIGN	DATE	CHECK	DATE	REVIEW	DATE
DESIGN	NP 04/05	RJ	04/05	RH	04/05
DRAWN	NP 04/05	RJ	04/05	RH	04/05
QUANT.	NP 04/05	RJ	04/05	RH	04/05

APPROVAL	DATE	REMARKS
PROJECT DESIGN ENGINEER		
PRECONSTRUCTION ENGINEER		

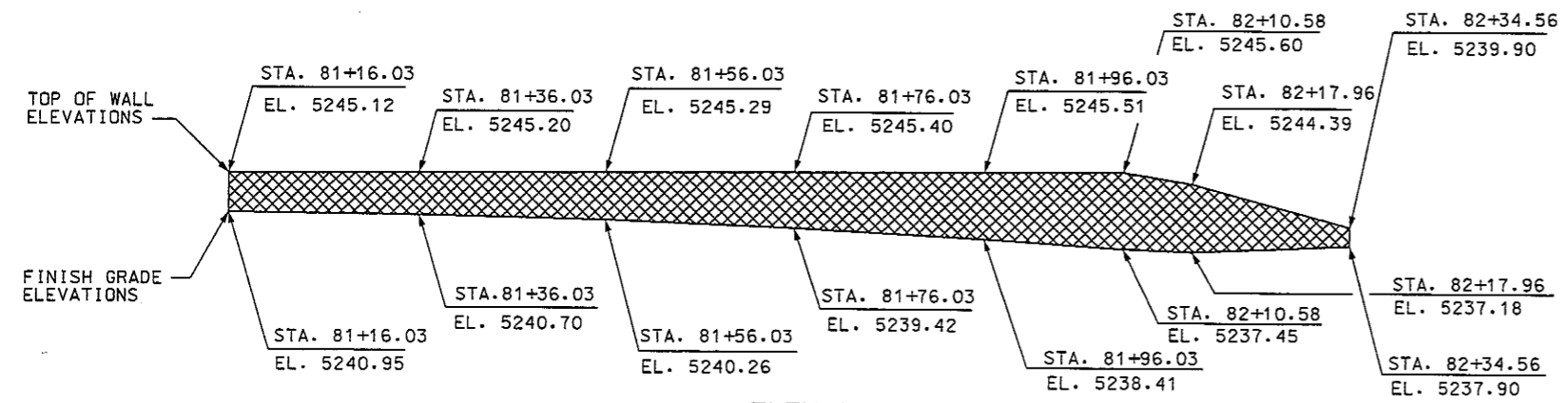
24-MAY-2005 0:00 File: P:\P\0089\12462\3382_PP_02.dwg



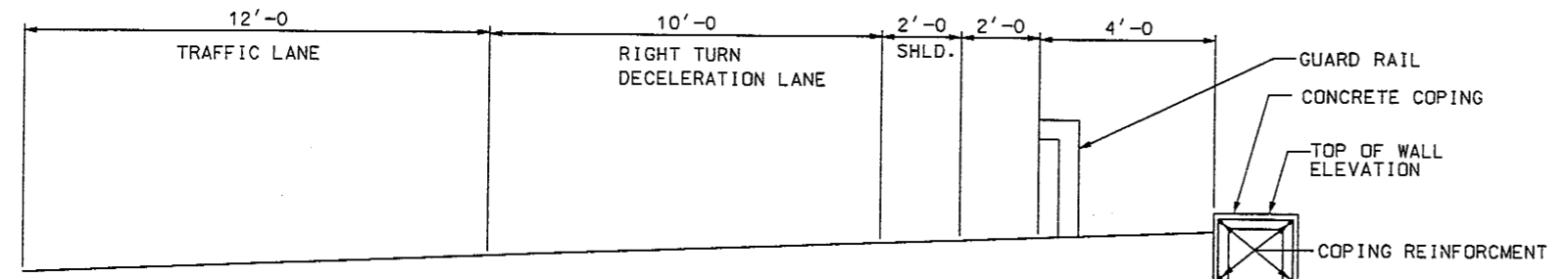
PLAN VIEW
MSE WALL



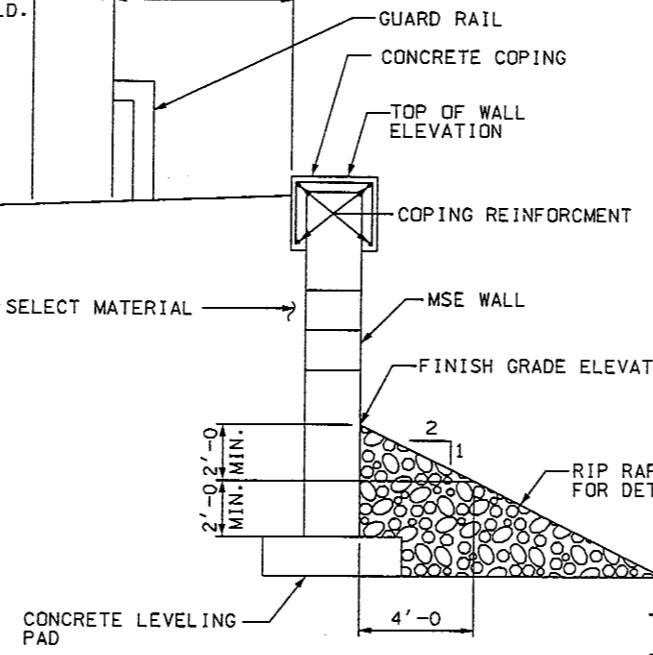
LOCATION PLAN



ELEVATION



PARTIAL SECTION THRU ROADWAY
US-SR-89



- GENERAL NOTES**
1. USE COATED DEFORMED-BILLET REINFORCING STEEL BARS CONFORMING TO AASHTO M 284 DR M 111 AND M 31 GRADE 60 RESPECTIVELY.
 2. PROVIDE 2" CONCRETE COVER TO REINFORCING STEEL EXCEPT WHERE NOTED OTHERWISE
 3. USE CLASS AA(AE) CAST-IN-PLACE CONCRETE EXCEPT WHERE SPECIFIED OTHERWISE.
 4. OFFSETS ARE TO FRONT FACE OF COPING.
 5. GUARD RAIL POSTS ARE SLEEVED WHEN ADJACENT TO MSE WALL.

DESIGN DATA

CAST-IN-PLACE CONCRETE: CLASS AA (AE) $f'_c = 4,000$ PSI; f_y (REINF.) = 60,000 PSI
 $n = 8$

QUANTITIES

ITEM	ESTIM.	UNIT	AS CONST.
MSE WALL R-450 (ESTIMATED SURFACE AREA 676 SQ. FT.)	1	LUMP	

UTAH DEPARTMENT OF TRANSPORTATION SALT LAKE CITY, UTAH STRUCTURES DIVISION		DESIGN MWR 01/05	CHECK RGN 01/05
APPROVAL RECORD:	DATE	SENIOR DESIGN ENGR.	DATE
APPROVED FOR USE BY UDOT	DATE	UDOT BRIDGE ENGR.	DATE
THREE BRIDGES; US-89 LOGAN CANYON	SITUATION & LAYOUT		
REPLACEMENT OF RIGHT HAND FORK BRIDGE	PROJECT #BRF-0089(77)462, #NH-0089(94)461 NUMBER #STP-0089(89)462		
CACHE	COUNTY		
R-450	DRG. NO.		
SHT. 1	OF 1		

D:\p\p\p\12478\3382.mxd - 01-01 sheet 1.dgn 14-NOV-2005