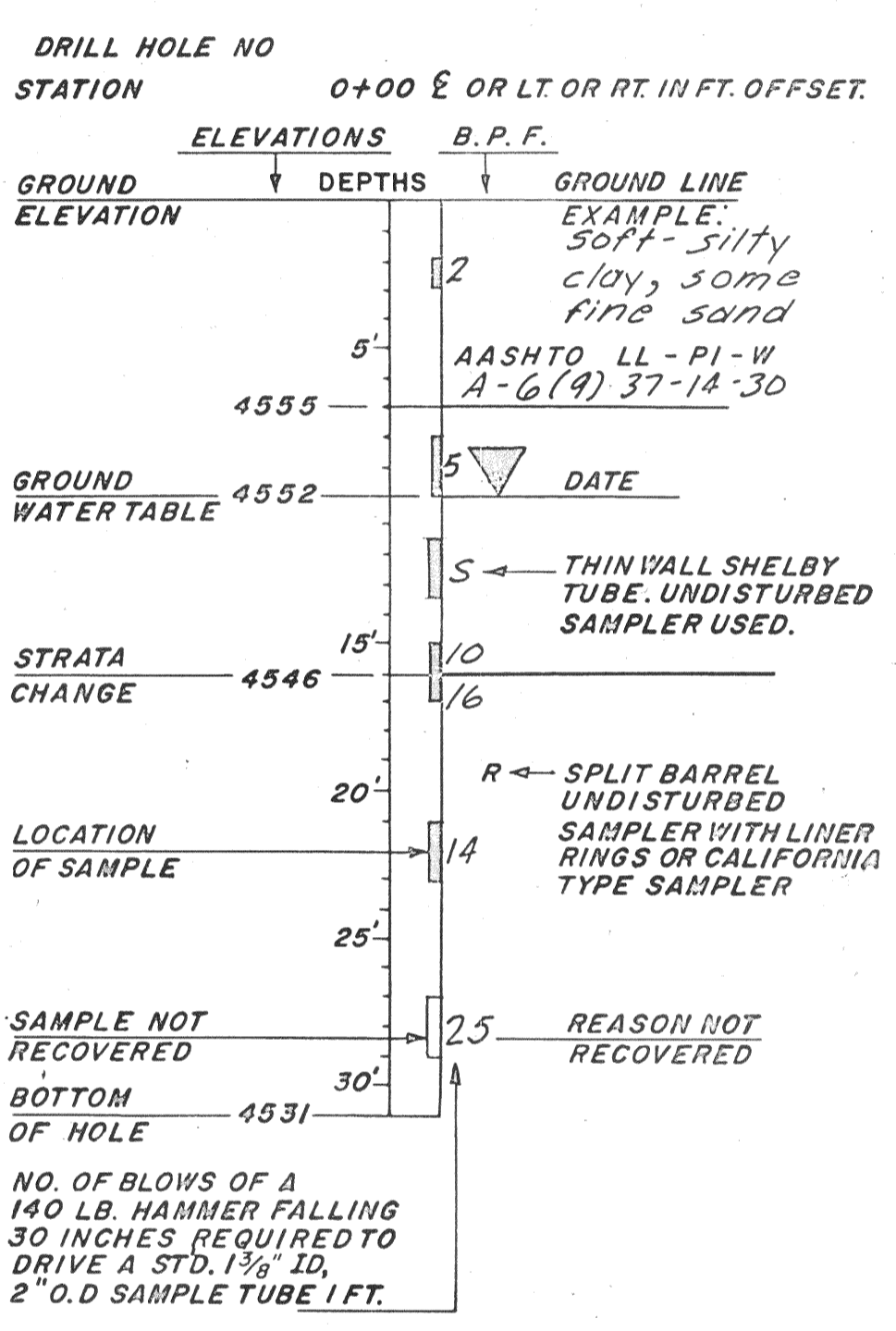


KEY TO DRILLING LOG

RELATIVE DENSITY (NON-PLASTIC SAND & SILT)
 VERY LOOSE - LESS THAN 4 BLOWS PER FOOT.
 LOOSE - 4 TO 10 BLOWS PER FOOT.
 MEDIUM - 10 TO 30 BLOWS PER FOOT.
 DENSE - 30 TO 50 BLOWS PER FOOT.
 VERY DENSE - MORE THAN 50 BLOWS PER FOOT.

CONSISTENCY (PLASTIC SILT & CLAY)
 VERY SOFT - LESS THAN 2 BLOWS PER FOOT.
 SOFT - 2 TO 4 BLOWS PER FOOT.
 MEDIUM - 4 TO 8 BLOWS PER FOOT.
 STIFF - 8 TO 15 BLOWS PER FOOT.
 VERY STIFF - 15 TO 30 BLOWS PER FOOT.
 HARD - MORE THAN 30 BLOWS PER FOOT.

- | | | |
|-----------------|--------------|-------------|
| TOPSOIL OR FILL | IGNEOUS | SANDY CLAY |
| GRAVEL | LIMESTONE | CLAYEY SAND |
| SAND | CONGLOMERATE | SILTY CLAY |
| SILT | DOLOMITE | CLAYEY SILT |
| CLAY | SANDSTONE | SILTY SAND |
| SHALE | SILTSTONE | SANDY SILT |



ABBREVIATIONS

L.L. - LIQUID LIMIT IN %
 P.I. - PLASTIC INDEX
 W. - NATURAL MOISTURE CONTENT IN %
 Ref. - REFUSAL ≥ 50 BLOWS PER 6"
 PEN - PENETRATION
 G.W.T. - GROUND WATER TABLE
 B.P.F. - BLOWS PER FOOT.
 N.P. - NON PLASTIC
 AASHTO - SOIL CLASSIFICATION SYSTEM

UTAH DEPARTMENT OF TRANSPORTATION
 SALT LAKE CITY, UTAH
MATERIALS and RESEARCH SECTION

I-215 TO BIG COTTONWOOD CANYON
 RETAINING WALL

Drawn By: *Kistler* Checked By: *Si. Salhi* F-068 (3)
 Project Number
 Checked By: _____ Checked By: _____
 Station: 102 TO 110
 Approval Recommended By: *Louise Lausher* SALT LAKE
 Received: 2-3-89 Date: *U. S. C. Hunsinger* County
 Chief Structural Engr.

Foundations File No. _____ Dig. No. **R-181** 3 of 3

NOTE: The water table depths shown on the drill logs represent hole conditions on the date shown, either with casing still in place or with perforated plastic pipe installed. It should be noted however, that other locations away from the test holes or at other times of the year the water table elevation may vary significantly.

Date Drilled: August & Sept. 1988

NO.	BY	DATE	REVISIONS

FIGURE 1