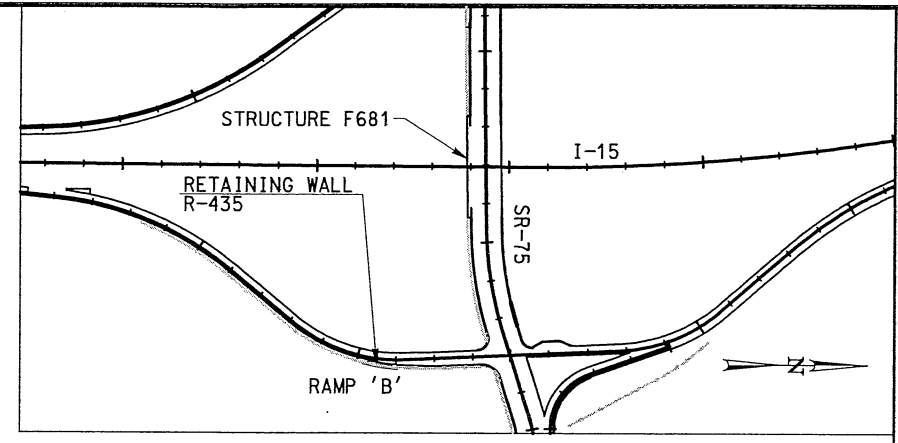
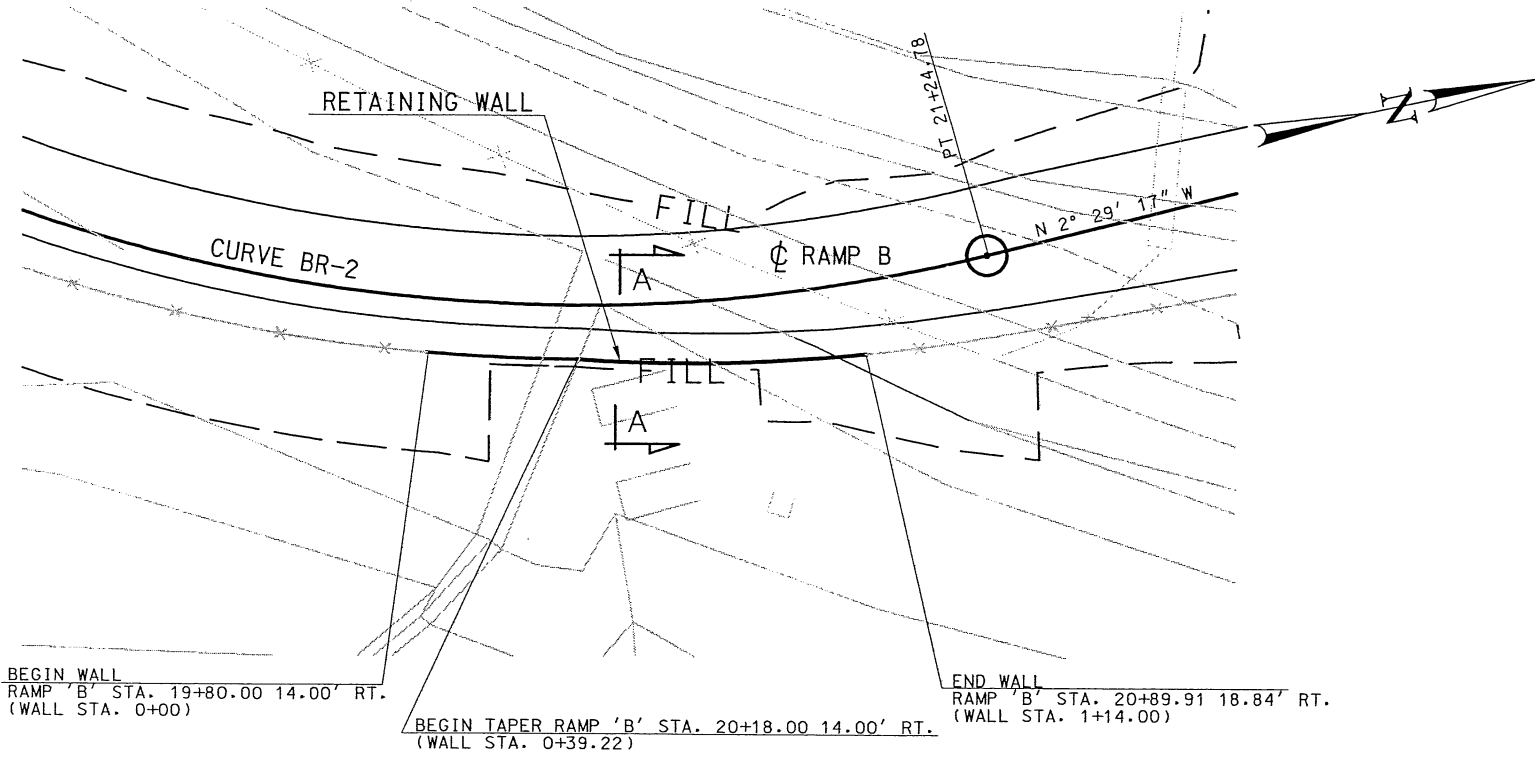


RAMP B CURVE BR-2

PC = 18+02.14  
 PT = 21+34.78  
 $\Delta = 42^\circ 29' 48''$   
 L = 322.64'  
 R = 435.00'



VICINITY DRAWING - RETAINING WALL

SCALE: 1" = 100'

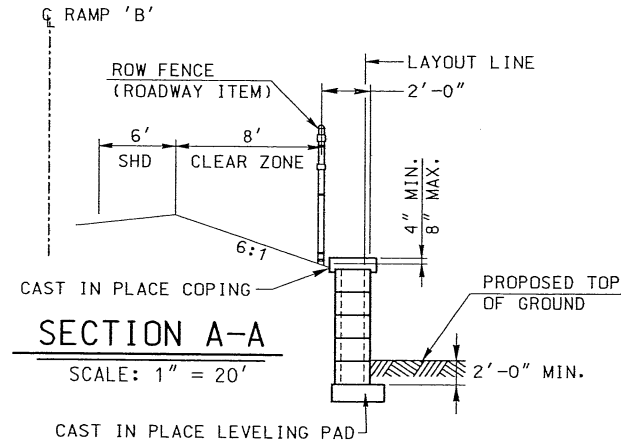
BEGIN WALL  
 RAMP 'B' STA. 19+80.00 14.00' RT.  
 (WALL STA. 0+00)

BEGIN TAPER RAMP 'B' STA. 20+18.00 14.00' RT.  
 (WALL STA. 0+39.22)

END WALL  
 RAMP 'B' STA. 20+89.91 18.84' RT.  
 (WALL STA. 1+14.00)

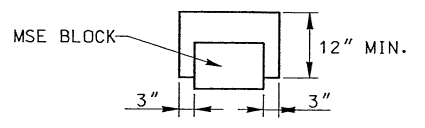
PLAN RETAINING WALL

SCALE: 1" = 50'

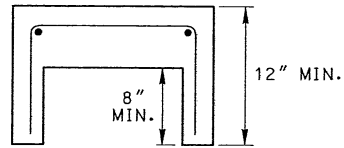


SECTION A-A

SCALE: 1" = 20'



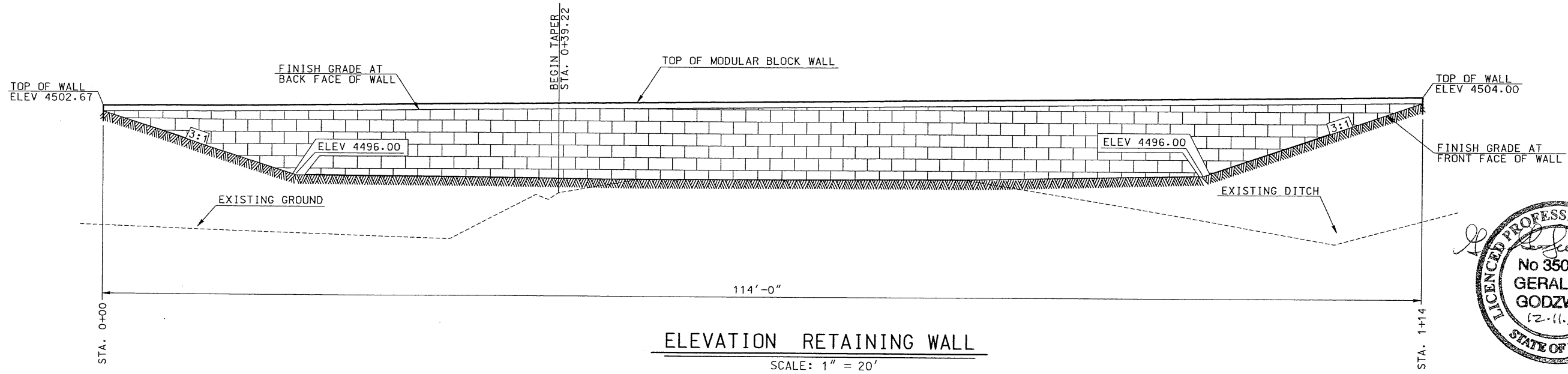
DETAIL  
 CAST IN PLACE COPING



COPING

RETAINING WALL QUANTITIES			
LOCATION	EST. EXPOSED SURFACE	UNIT	AS CONSTR
RETAINING WALL - ALTERNATE SYSTEMS	674.0 SQ FT	LUMP	

FOR INFORMATION ONLY



ELEVATION RETAINING WALL

SCALE: 1" = 20'



UTAH DEPARTMENT OF TRANSPORTATION SALT LAKE CITY, UTAH		DESIGN	BSP_10/03	CHECK	GCG_10/03
HDR ENGINEERING, INC		DRAWN	JMG_10/03	CHECK	GCG_10/03
APPROVAL	DATE	RECOMM.	DATE	BY	NO.
FOR USE		FOR USE			
BY		BY		DATE	NO.
QUANT.	BSP_10/03	QUANT.	BSP_10/03	CHECK	GCG_10/03
DATE		DATE		DATE	
REVISIONS		REVISIONS		REVISIONS	

UTAH DEPARTMENT OF TRANSPORTATION (IRONTON)  
 RETAINING WALL R-435  
 RETAINING WALL  
 PROJECT NUMBER \*NH-IBRF 15-6(134)264

UTAH COUNTY  
 R-435  
 DRG. NO.

SHT. 1 of 1