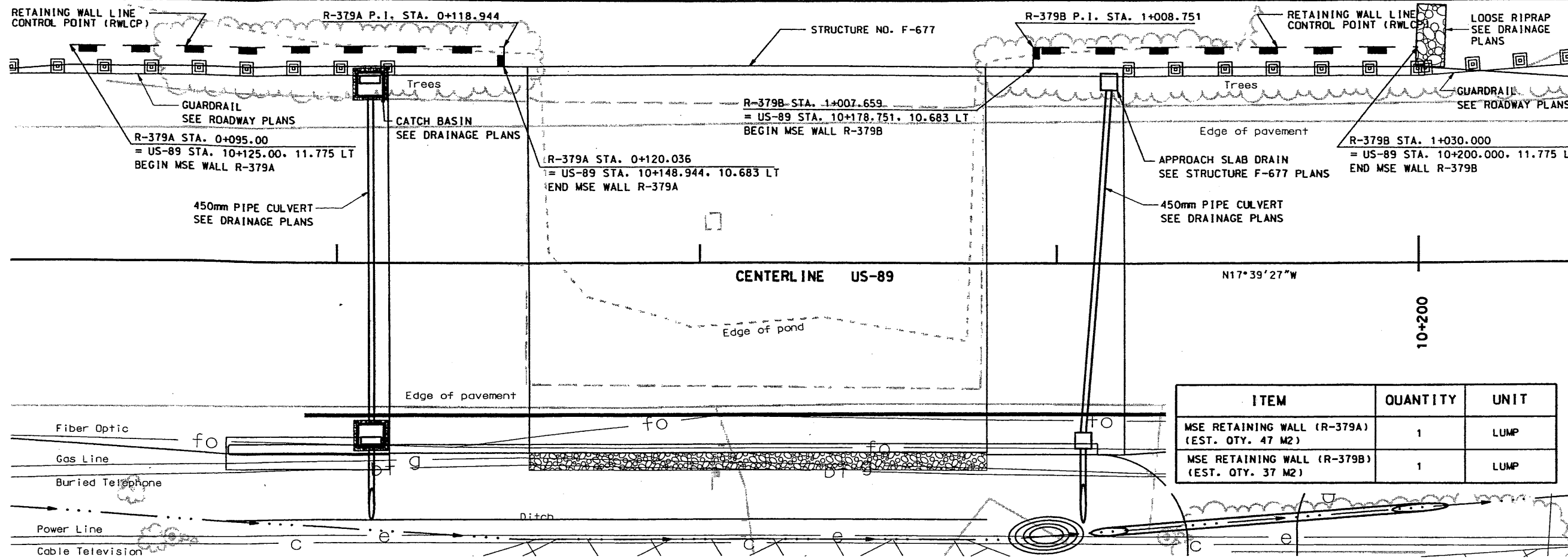
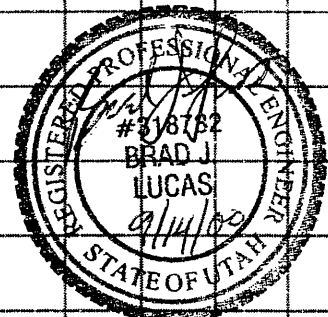
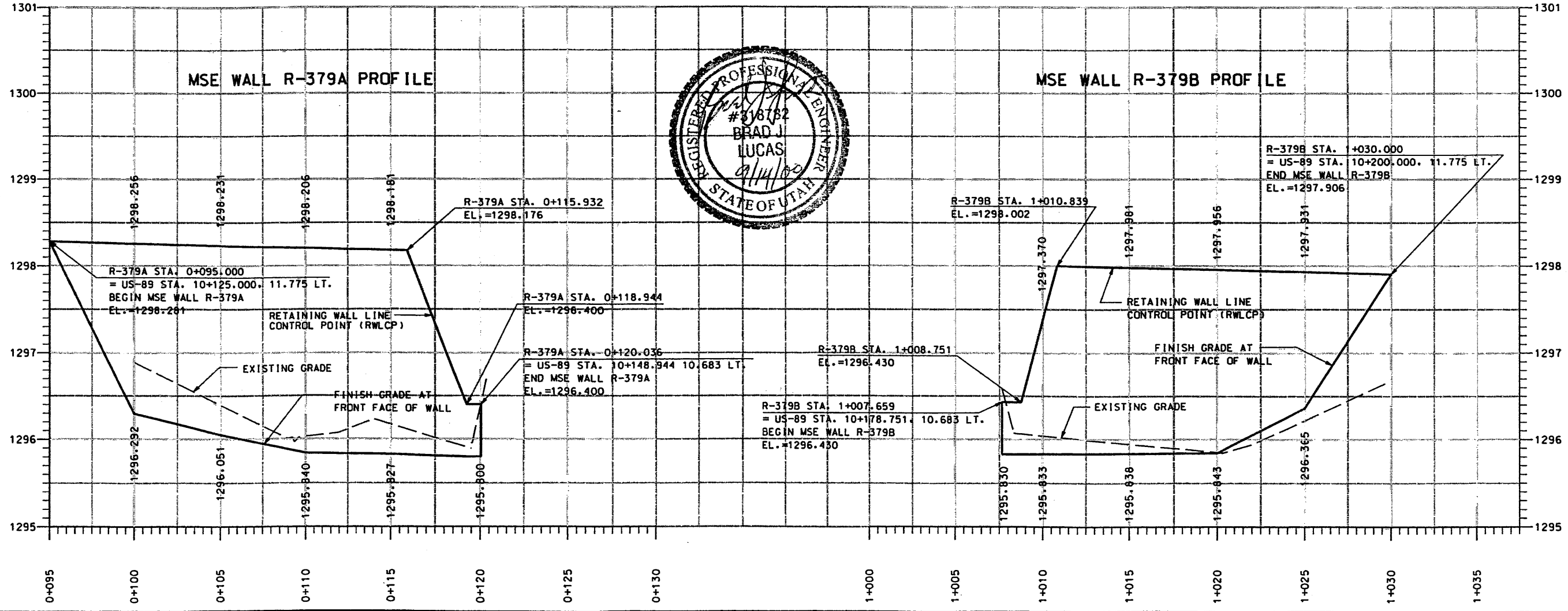


Date: 09/11/2000 Time: 05:13:43 PM

File: ncomp:st171_99wSheet1717_mewal1_01.dgn



ITEM	QUANTITY	UNIT
MSE RETAINING WALL (R-379A) (EST. QTY. 47 M2)	1	LUMP
MSE RETAINING WALL (R-379B) (EST. QTY. 37 M2)	1	LUMP



LOCHNER
H.W. LOCHNER, INC.
310 EAST 4500 SOUTH, SUITE 600, SALT LAKE CITY, UT 84107 (801) 262-0700

UTAH DEPARTMENT OF TRANSPORTATION
SALT LAKE CITY, UTAH
STRUCTURES DIVISION

COLD SPRINGS
BRIDGE REPLACEMENT
WALL SITUATION & LAYOUT

PROJECT NUMBER: STP-BRF-0089(31)362

BOX ELDER COUNTY
R-379
DRG. NO.

SHT. 1 OF 2

DESIGN	BL	9/00	CHECK	TR	9/00
DRAWN	BK	9/00	CHECK	TR	9/00
QUANT.	BK	9/00	CHECK	BL	9/00

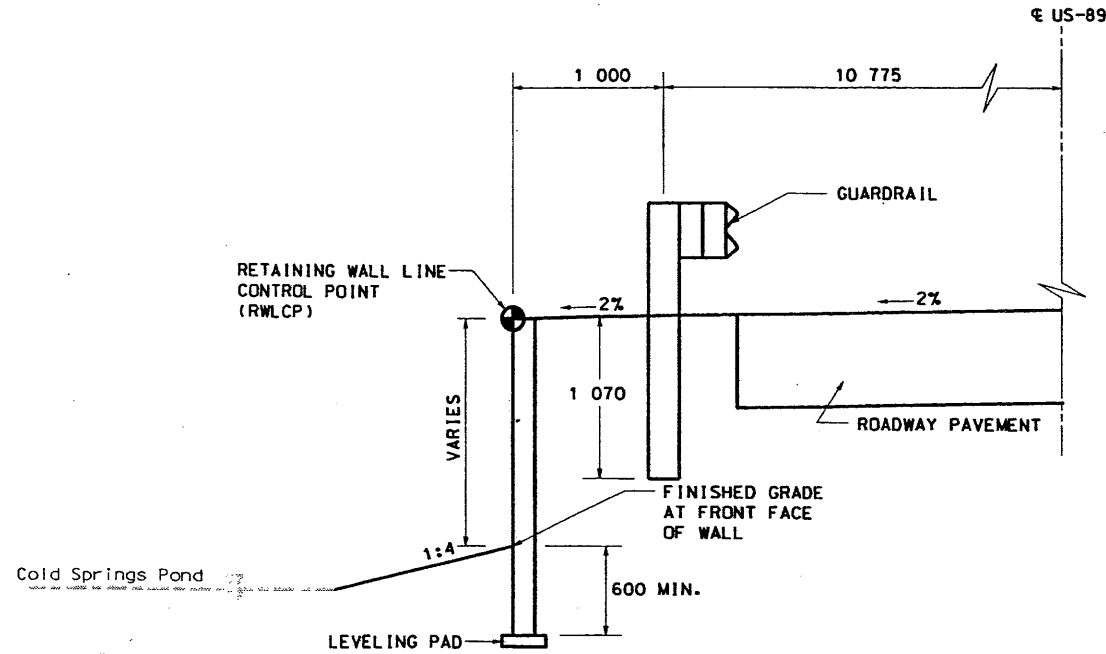
APPROVAL: *Glenn* DATE: *9/11/00*
APPROVAL: *Bob* DATE: *9/11/00*

REVISIONS

NO.	DATE	BY	REMARKS

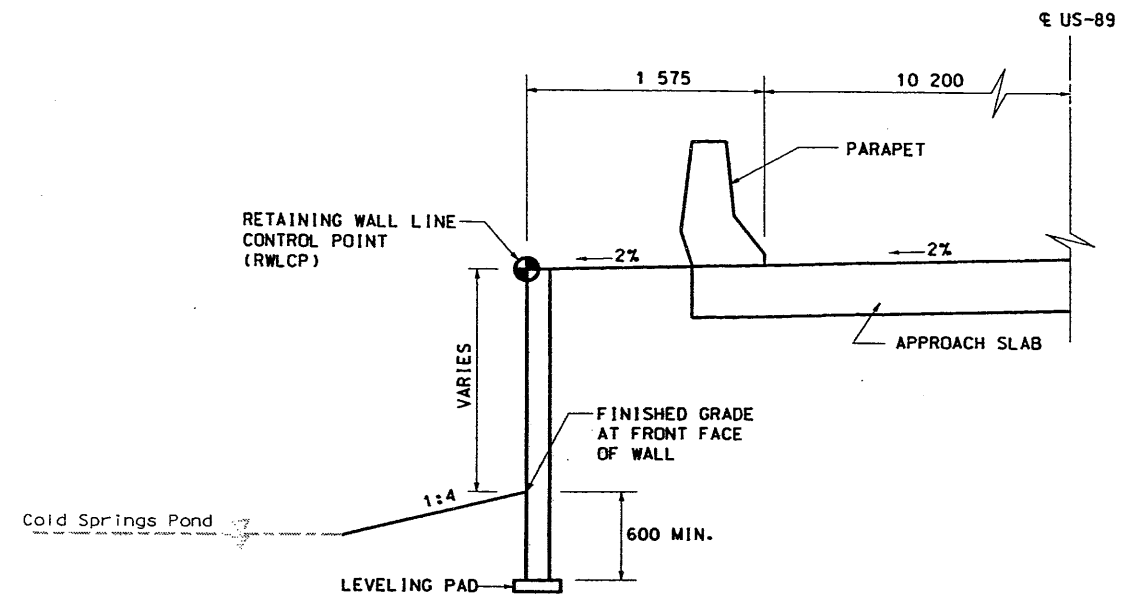
Date: 09/11/2000 Time: 07:55:50 PM

F:\encomp\w717_99\sheet.F:\encomp\w717_99\sheet\11.dgn



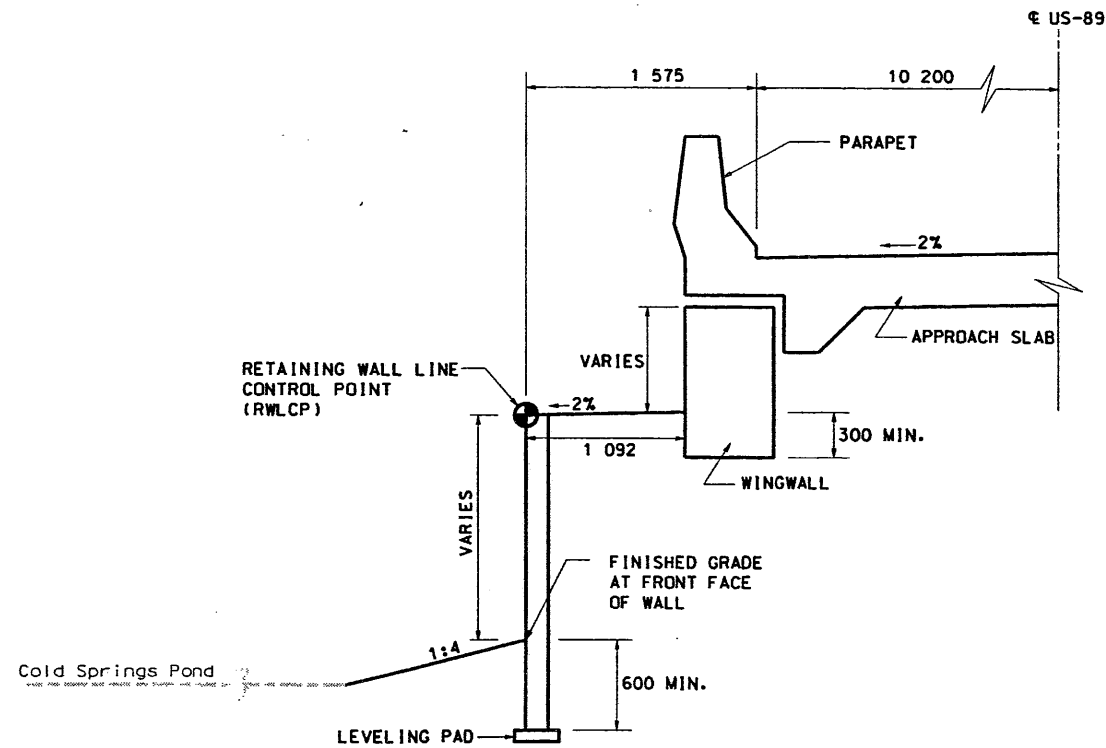
TYPICAL SECTION NO. 1

R-379A STA. 0+095.000 TO 0+112.690
R-379B STA. 1+014.030 TO 1+030.000



TYPICAL SECTION NO. 2

R-379A STA. 0+112.690 TO 0+115.932
R-379B STA. 1+010.839 TO 1+014.030



TYPICAL SECTION NO. 3

R-379A STA. 0+115.932 TO 0+120.036
R-379B STA. 1+007.659 TO 1+010.839



LOCHNER

H.W. LOCHNER, INC. 310 EAST 4500 SOUTH, SUITE 600, SALT LAKE CITY, UT 84107 (801) 262-8700

NO.	DATE	BY	REMARKS

DESIGN	BL	9/00	CHECK	JR	9/00
DRAWN	BK	9/00	CHECK	JR	9/00
APPROVAL	REC'D	9/00	DATE	DESIGN	ENGR
APPROVED	DATE	9/00	DATE	DATE	DATE

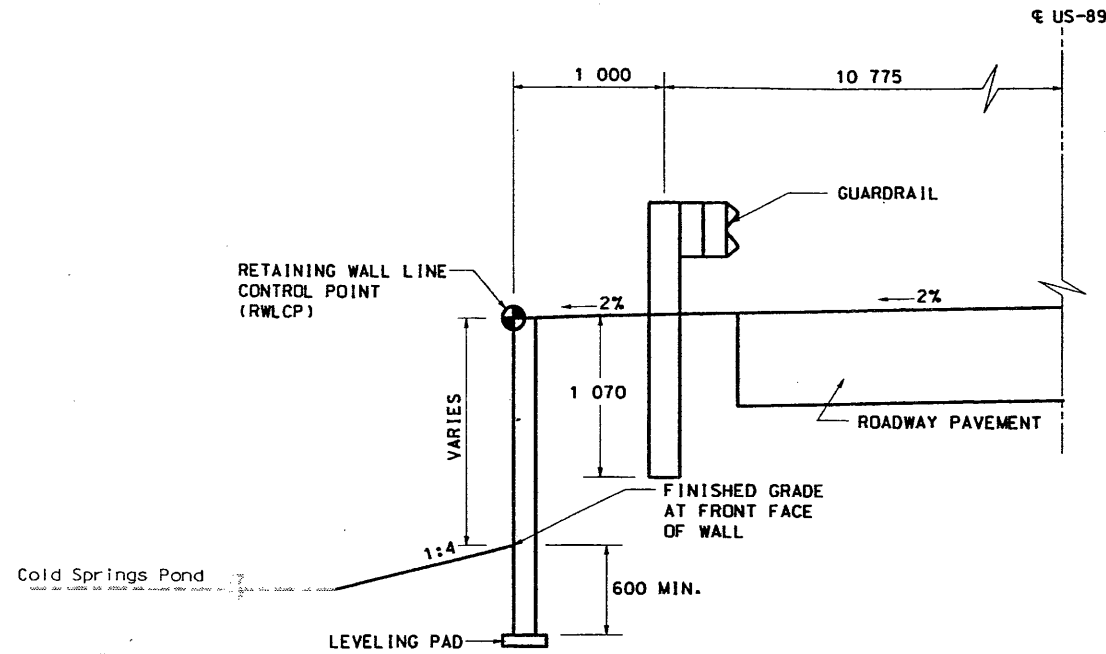
UTAH DEPARTMENT OF TRANSPORTATION SALT LAKE CITY, UTAH STRUCTURES DIVISION
COLD SPRINGS BRIDGE REPLACEMENT RETAINING WALL DETAILS
PROJECT NUMBER STP-BRF-0089(31)362

BOX ELDER COUNTY
R-379 DRG. NO.
SHT. 2 OF 2

NOTES:
1. ALL DIMENSIONS ARE IN MILLIMETERS UNLESS SPECIFIED OTHERWISE.

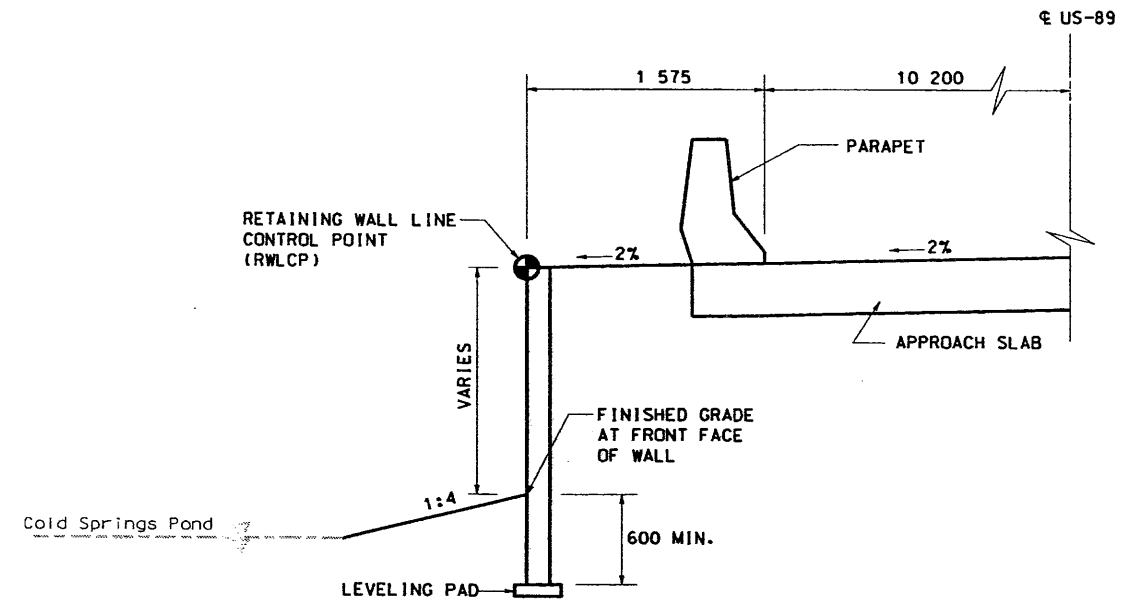
Date: 09/11/2000 Time: 07:55:50 PM

Filename: 1717_99sheet_files\1717_walldetail_01.dgn



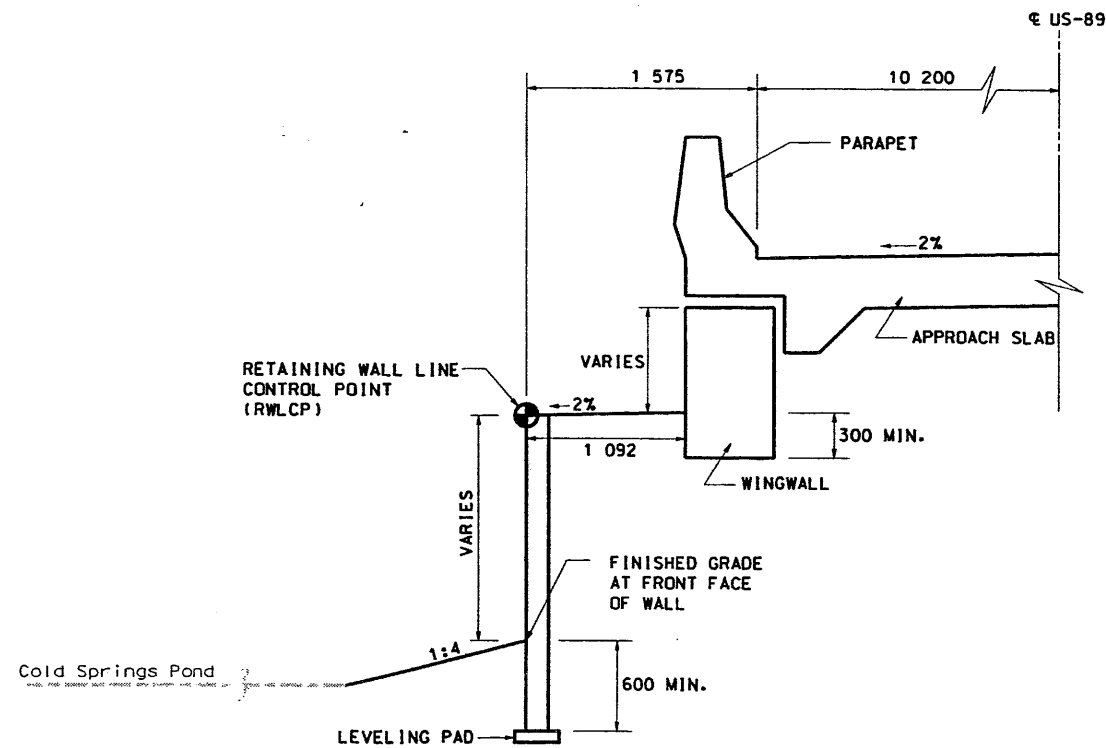
TYPICAL SECTION NO. 1

R-379A STA. 0+095.000 TO 0+112.690
R-379B STA. 1+014.030 TO 1+030.000



TYPICAL SECTION NO. 2

R-379A STA. 0+112.690 TO 0+115.932
R-379B STA. 1+010.839 TO 1+014.030



TYPICAL SECTION NO. 3

R-379A STA. 0+115.932 TO 0+120.036
R-379B STA. 1+007.659 TO 1+010.839



LOCHNER

H.W. LOCHNER, INC. 310 EAST 4500 SOUTH, SUITE 600, SALT LAKE CITY, UT 84107 (801) 267-9100

NO.	DATE	BY	REMARKS

DESIGN	DRAWN	CHECK	QUANT.
BL	DK	JR	

UTAH DEPARTMENT OF TRANSPORTATION SALT LAKE CITY, UTAH STRUCTURES DIVISION
COLD SPRINGS BRIDGE REPLACEMENT RETAINING WALL DETAILS
PROJECT NUMBER STP-BRF-0089(31)362

BOX ELDER COUNTY
R-379 DRG. NO.
SHT. 2 OF 2

NOTES:

1. ALL DIMENSIONS ARE IN MILLIMETERS UNLESS SPECIFIED OTHERWISE.