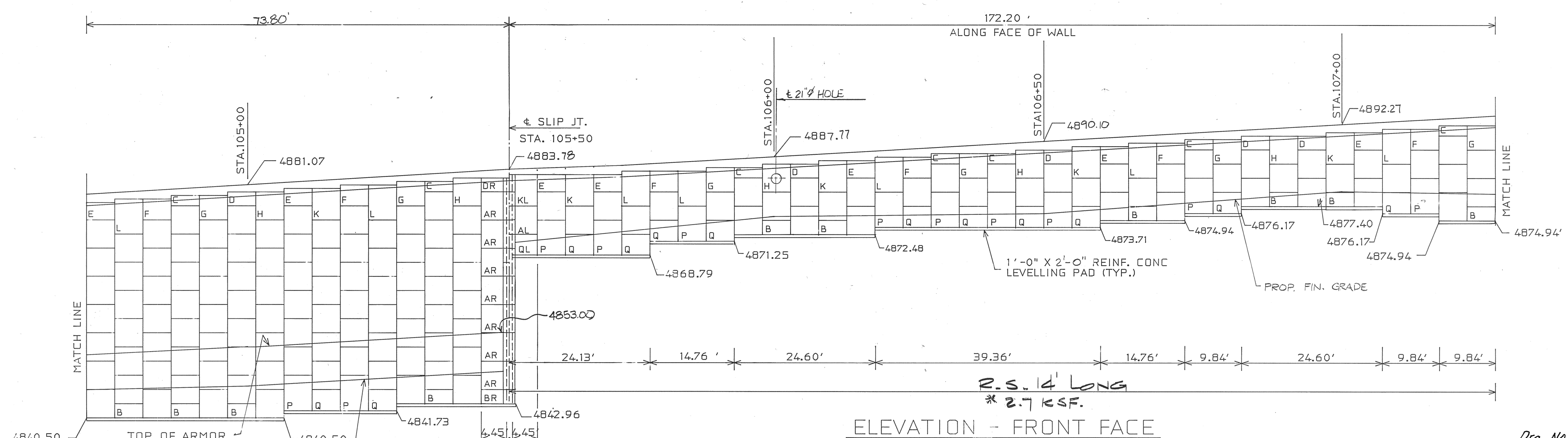


ELEVATION - FRONT FACE



ELEVATION - FRONT FACE

Revised Wall Plans 3/1/89
 "REINFORCED EARTH" IS THE REGISTERED TRADEMARK OF THE REINFORCED EARTH COMPANY.

This drawing contains information proprietary to The Reinforced Earth Company, and is being furnished for the use of UTAH D.O.T. only in connection with this project, and the information contained herein is not to be transmitted to any other organization unless specifically authorized in writing by The Reinforced Earth Company. The Reinforced Earth Company is exclusive licensee in the United States under patents issued to Henri Vidal, and the furnishing of this drawing does not constitute an express or implied license under the Vidal patents.

Drq. No. R-181, Proj. No. F-068(3)

REINFORCED EARTH The Reinforced Earth Company Rosslyn Center, 1700 North Moore Street, Arlington, Virginia 22209 (703) 527-3434	
Structure	REINFORCED EARTH WALL
Location	I- 215 TO
BIG COTTON WOOD CANYON	
Owner	UTAH D.O.T.
DESIGNED BY: B.Y.	DATE: 3/1/89
PROJECT ENGR: d.p.m	CONTRACT NO. 3159
CHECKED BY: d.p.m	10-6-88
DRAWING NO. 3 of 6	
REV. NO.	DATE
DESCRIPTION	
ELEVATION	
SCALE AS NOTED	

REINFORCED STRIPS 50 x 4 mm
 R.S. 32' LONG *6.7 KSF.