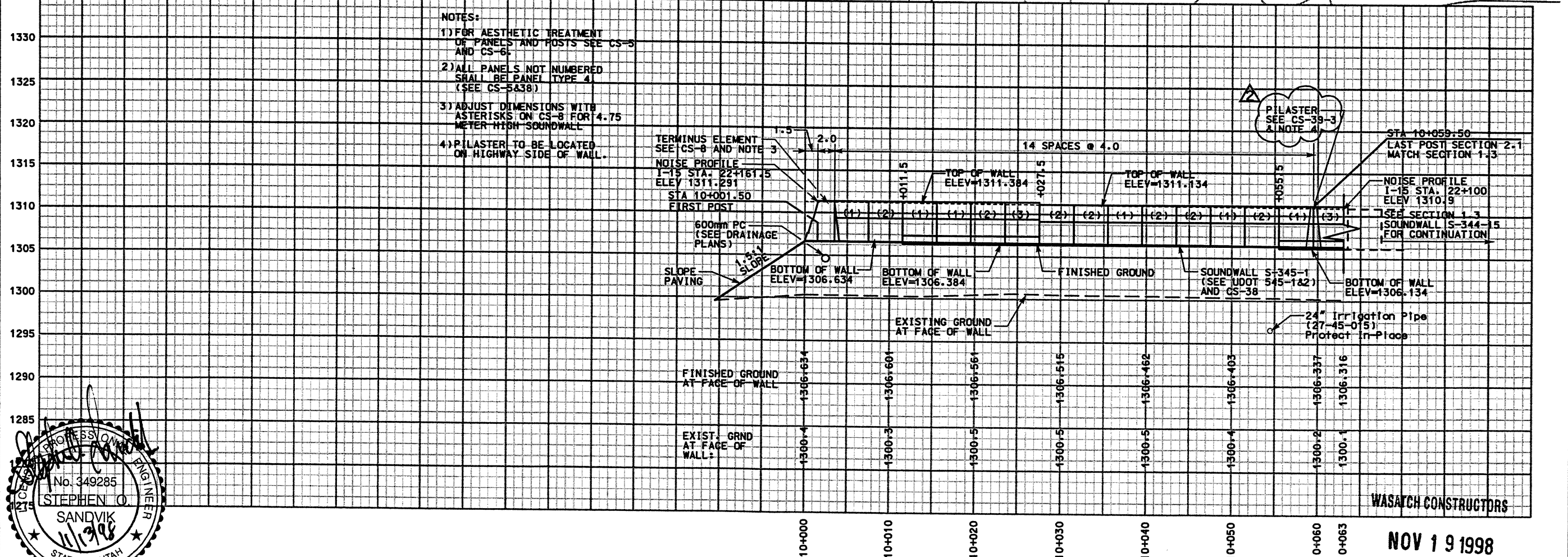
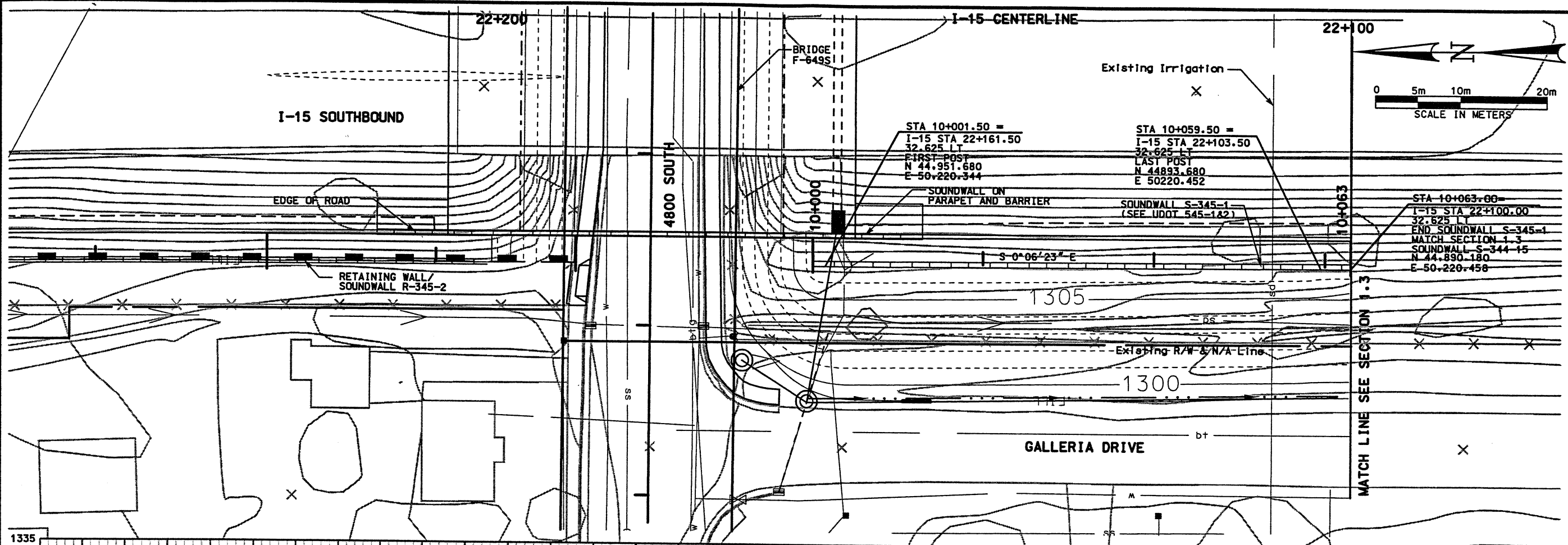
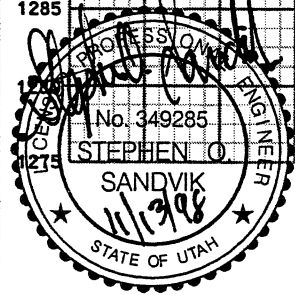


Username: youngja
 Date: 12-NOV-1998 11:00:18 AM
 File: c:\p15\cadd\15_sheets_files\wall\45_retail-01.dwg



- NOTES:**
- 1) FOR AESTHETIC TREATMENT OF PANELS AND POSTS SEE CS-5 AND CS-6.
 - 2) ALL PANELS NOT NUMBERED SHALL BE PANEL TYPE 4 (SEE CS-5438).
 - 3) ADJUST DIMENSIONS WITH ASTERISKS ON CS-8 FOR 4.75 METER HIGH SOUNDWALL.
 - 4) PILLASTER TO BE LOCATED ON HIGHWAY SIDE OF WALL.



NOTE: PROFILE REPRESENTS FRONT FACE OF WALL LOOKING EAST

NOV 19 1998

RELEASED FOR CONSTRUCTION

APPROVED FOR CONSTRUCTION		DESCRIPTION	
NO.	DATE	ORIGINAL ISSUE	REVISED PILLASTER CALLOUT
1	3/26/98		
2	11/12/98		
3			
4			
UTAH DEPARTMENT OF TRANSPORTATION		WBS NO. 2112401	
MK CENTENNIAL		SVERDRUP/DE LEUW	
APPROVAL RECORD:	2/23/98	Stephen O. Sandvik	DESIGN SDR
DATE	2/23/98	PROJECT DESIGN ENGINEER	DESIGN BAR
APPROVED	2/23/98	Randall L. Robb	CHECK BAR
DATE		PROJECT MANAGER	CHECK
I-15 CORRIDOR RECONSTRUCTION		SITUATION & LAYOUT S-345-1	
SECTION 2.1		PROJECT NUMBER #SP-15-7(135)296	
SALT LAKE COUNTY		DWG. NO. 2.15-345-1.1	
SHT. 1	OF 2		
REF.			

WASATCH CONSTRUCTORS