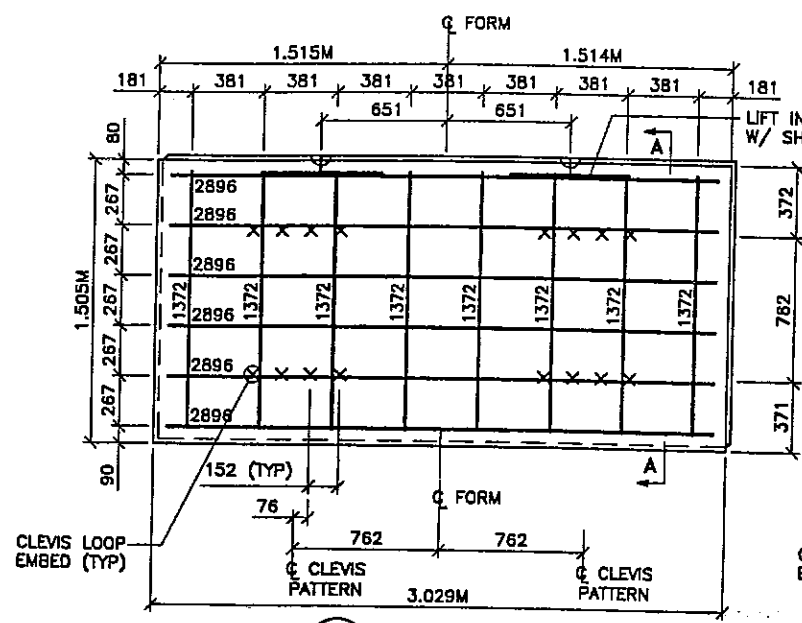
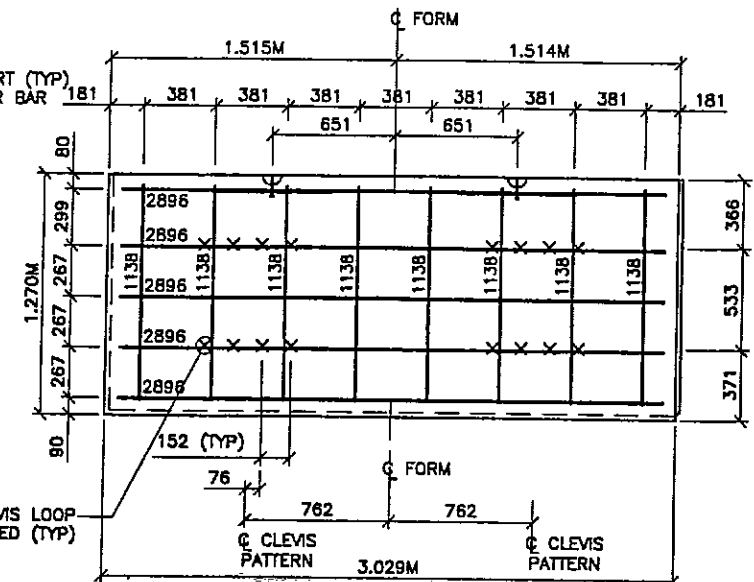


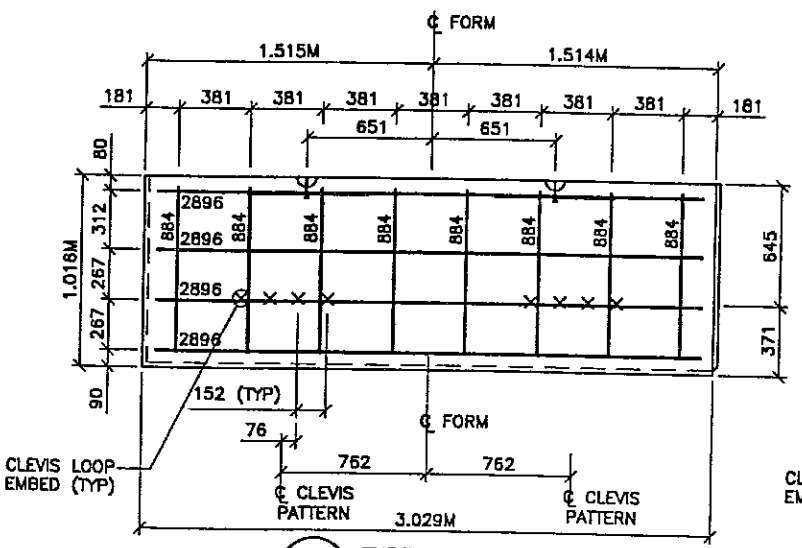
FINAL PLOT 12-19-97
 H:\RE_EARTH\PROJECT\239-0007\REBAR\TYPE-3\BAR-5X10
 VICE (X-UTAH.DWG) XP



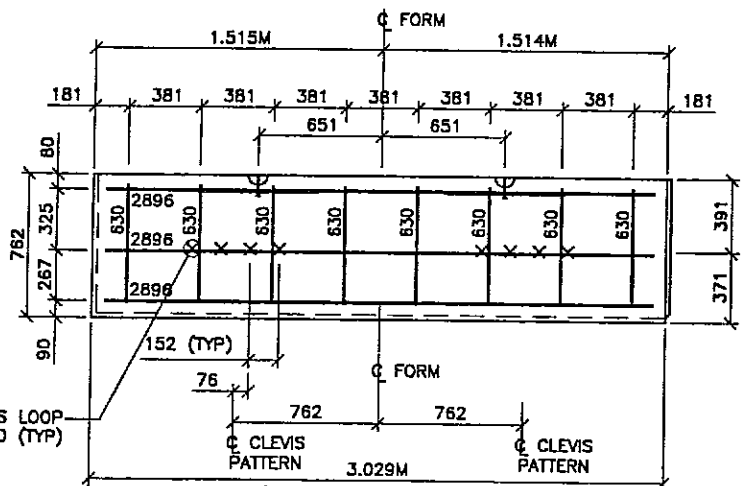
A-10 TYPE A-10 REBAR
 (AREA = 4.645 SQ.M)



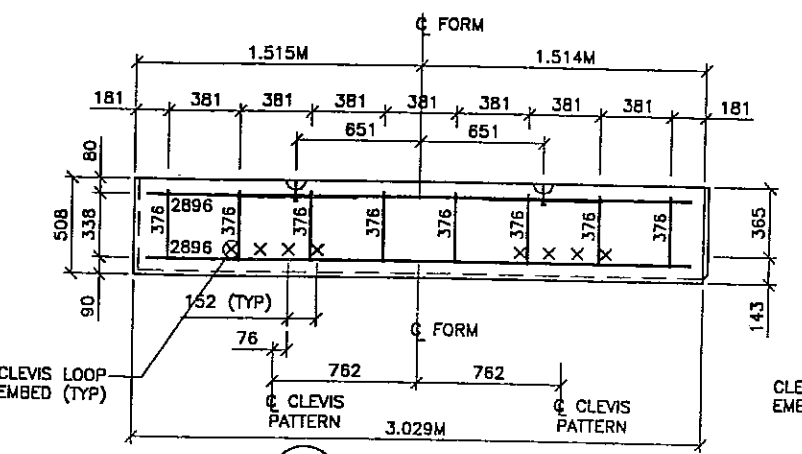
D-10 TYPE D-10 REBAR
 (AREA = 3.871 SQ.M)



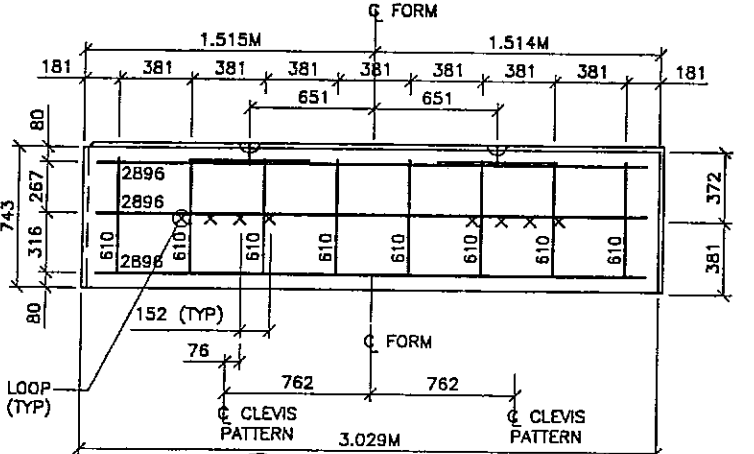
D2-10 TYPE D2-10 REBAR
 (AREA = 3.097 SQ.M)



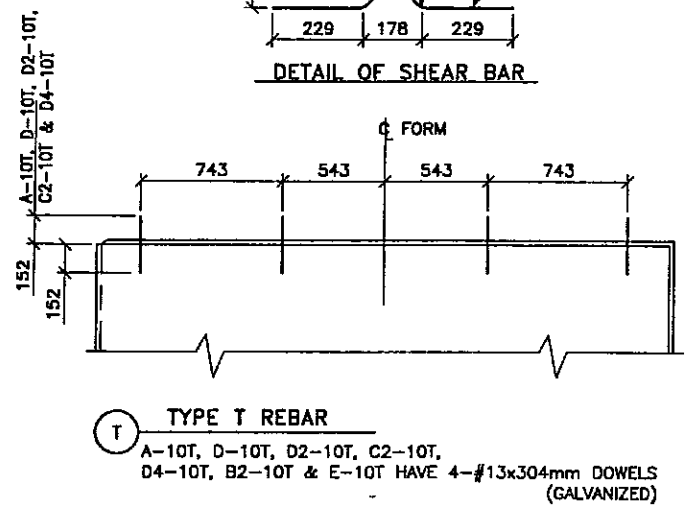
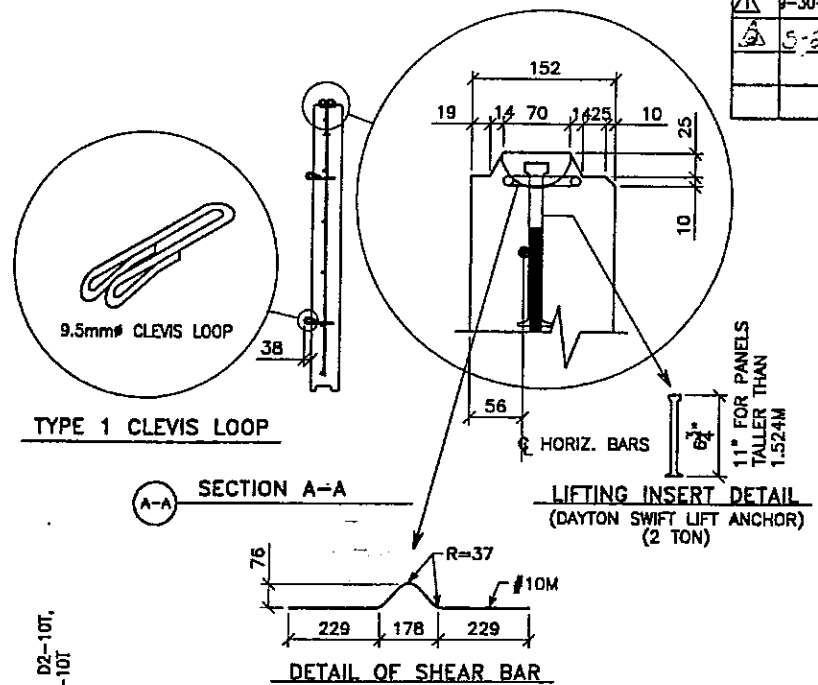
C2-10 TYPE C2-10 REBAR
 (AREA = 2.323 SQ.M)



D4-10 TYPE D4-10 REBAR
 (AREA = 1.548 SQ.M)



B2-10 TYPE B2-10 REBAR
 (AREA = 2.323 SQ.M)



T TYPE T REBAR
 A-10T, D-10T, D2-10T, C2-10T,
 D4-10T, B2-10T & E-10T HAVE 4-#13x304mm DOWELS
 (GALVANIZED)

- PANEL REINFORCEMENT NOTES:**
1. PANELS ARE SHOWN BACK FACE.
 2. HORIZONTAL REINFORCEMENT SHALL HAVE 50 mm MINIMUM COVER TO THE BACK FACE.
 3. ALL REINFORCEMENT SHALL HAVE 50 mm MINIMUM COVER TO THE SIDES.
 4. ALL REINFORCING BARS ARE #13 METRIC. LABELS ON EACH BAR INDICATE LENGTH. EXAMPLE: 1345 IS A #13 BAR 1345 mm LONG.
 5. PANEL REINFORCEMENT BARS SHALL BE DEFORMED BILLET STEEL BARS FOR CONCRETE REINFORCEMENT CONFORMING TO THE SPECIFICATIONS OF ASTM DESIGNATION A615, GRADE 60.
 6. ALL REINFORCING STEEL TO BE GALVANIZED IN ACCORDANCE WITH ASTM 767 CLASS I.
 7. CONCRETE PANELS TO HAVE 28 DAY COMPRESSIVE STRENGTH OF 25,200 KPa.
 8. EQUIVALENT WELDED WIRE FABRIC MAY BE USED.
 9. ALL PANELS TO USE 9.5mm CLEVIS LOOPS.
 10. VSL RETAINED EARTH™ IS PROTECTED UNDER PATENT 4,725,170.
 11. LIFT INSERTS ARE 6 3/4" LONG IN ALL PANELS LESS THAN 1.524M TALL. PANELS TALLER THAN 1.524M SHALL HAVE 11" LONG LIFT ANCHORS.

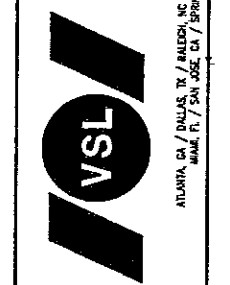
METRIC

CERTIFIED FOR INTERNAL STABILITY OF RETAINED EARTH™ STRUCTURES ONLY. EXTERNAL STABILITY, INCLUDING BUT NOT LIMITED TO FOUNDATION AND SLOPE STABILITY, IS THE RESPONSIBILITY OF THE OWNER. DESIGN IS BASED ON THE ASSUMPTION THAT THE MATERIAL WITHIN THE RETAINED EARTH™ MASS, METHODS OF CONSTRUCTION, AND QUALITY OF PREFABRICATED MATERIALS CONFORM TO THE MANUFACTURER'S SPECIFICATION.

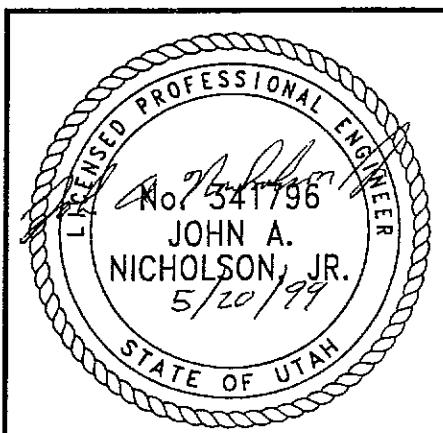
APPROVED FOR CONSTRUCTION		
NO.	DATE	DESCRIPTION
9-30-98		RELEASE FOR CONSTRUCTION
5-2-99		ISSUED AS CSP

DES.	MM	12-19-97
DRN.	DDO	12-19-97
CHK.	MM	12-19-97

VSL CORPORATION
 2840 Plaza Proce, Suite 200
 Raleigh, NC 27612
 Telephone: (919) 781-8272
 Fac: (919) 781-6853



WASATCH CONSTRUCTORS
 JUN 17 1999
 RELEASED FOR CONSTRUCTION



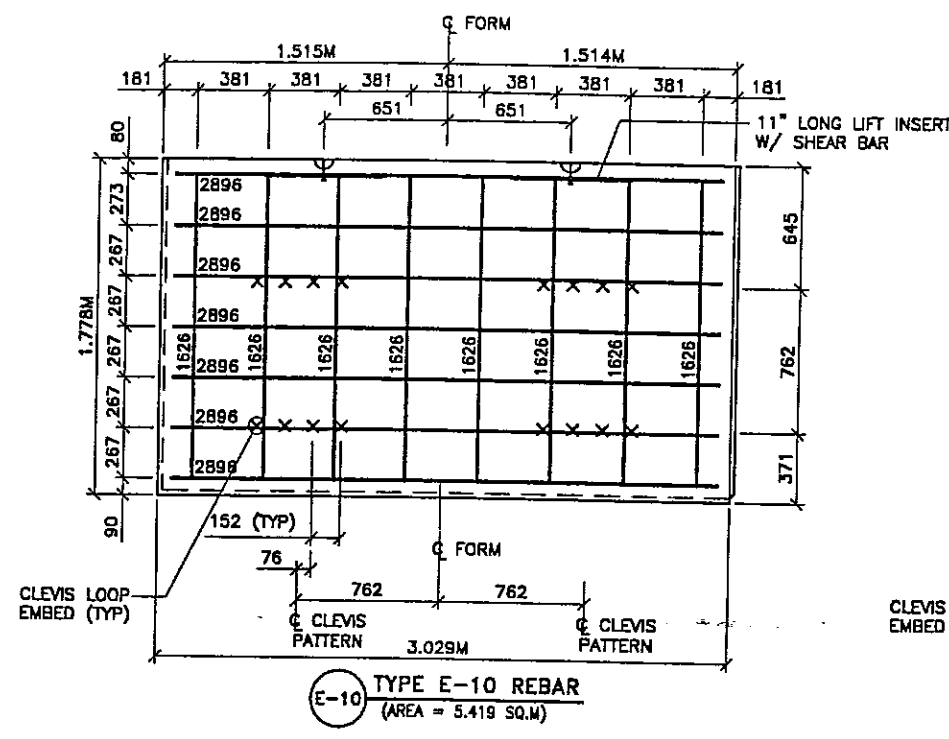
RETAINED EARTH™ WALLS
 CORRIDOR STANDARD PLAN
 PANEL REINFORCEMENT 1.524M x 3.048M
 UTAH I-15 INTERCHANGE
 SALT LAKE COUNTY, UTAH
 UTAH DEPARTMENT OF TRANSP.

DWG. NO. CS-301
 JOB NO. 239-0007
 SHEET NO. STD-1

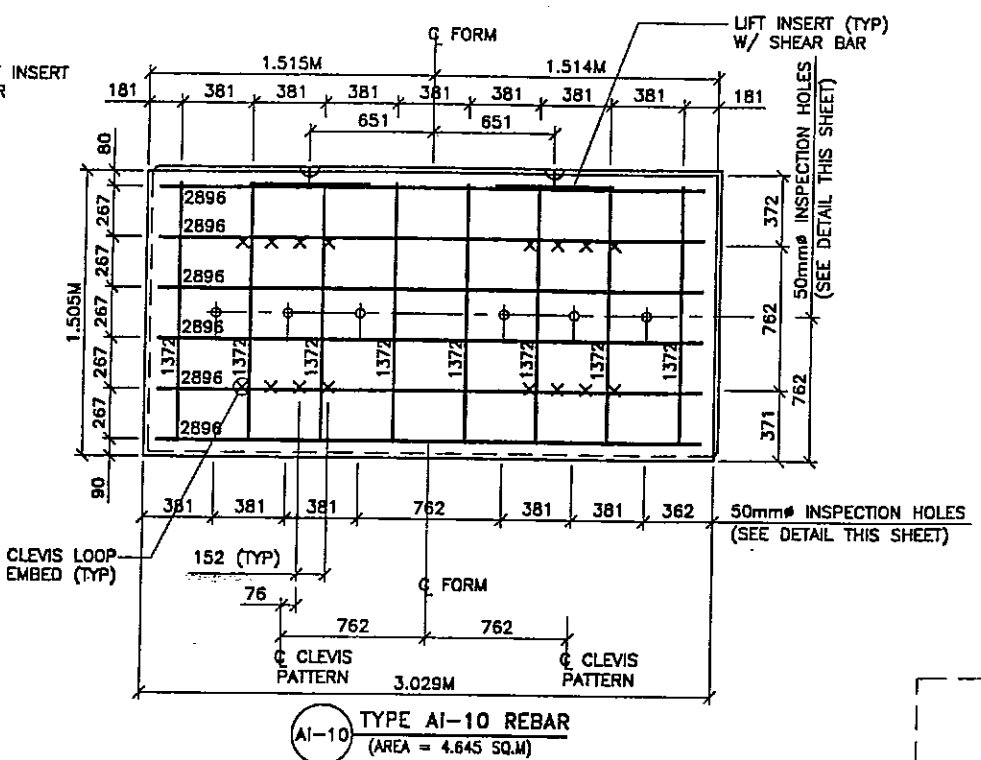
FINAL PLOT 12-19-97

H:\RE_EARTH\PROJECT\239-0007\REBAR\TYPE-3\BAR-5X10

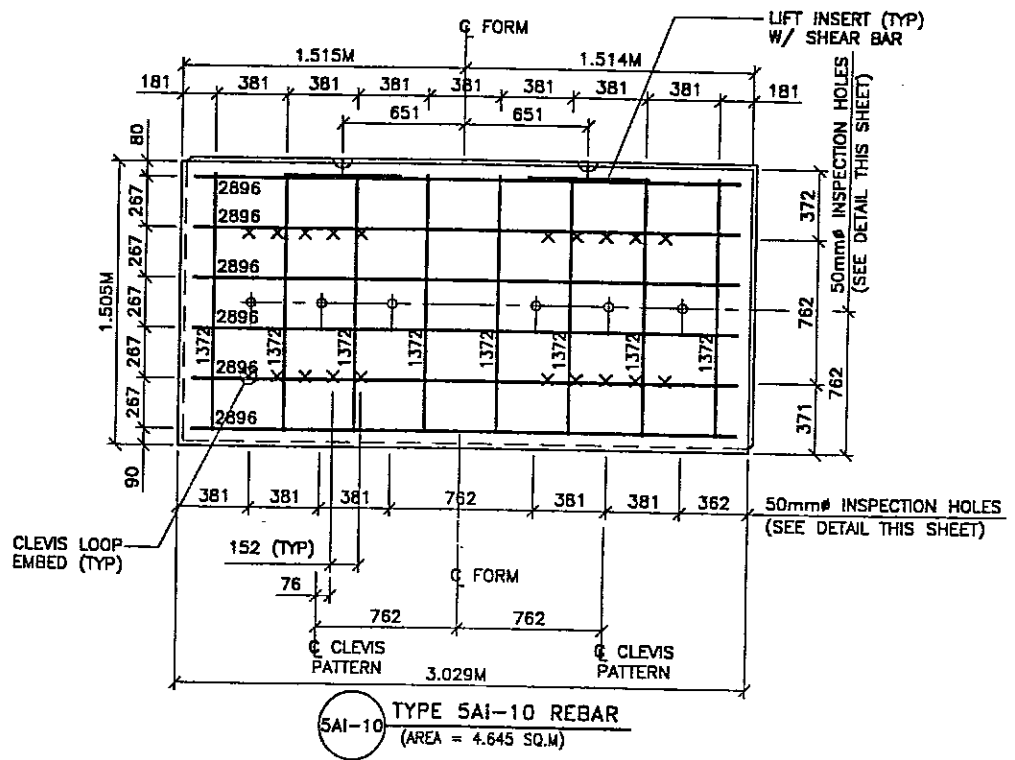
ENCE (X-UTAHLOWG)



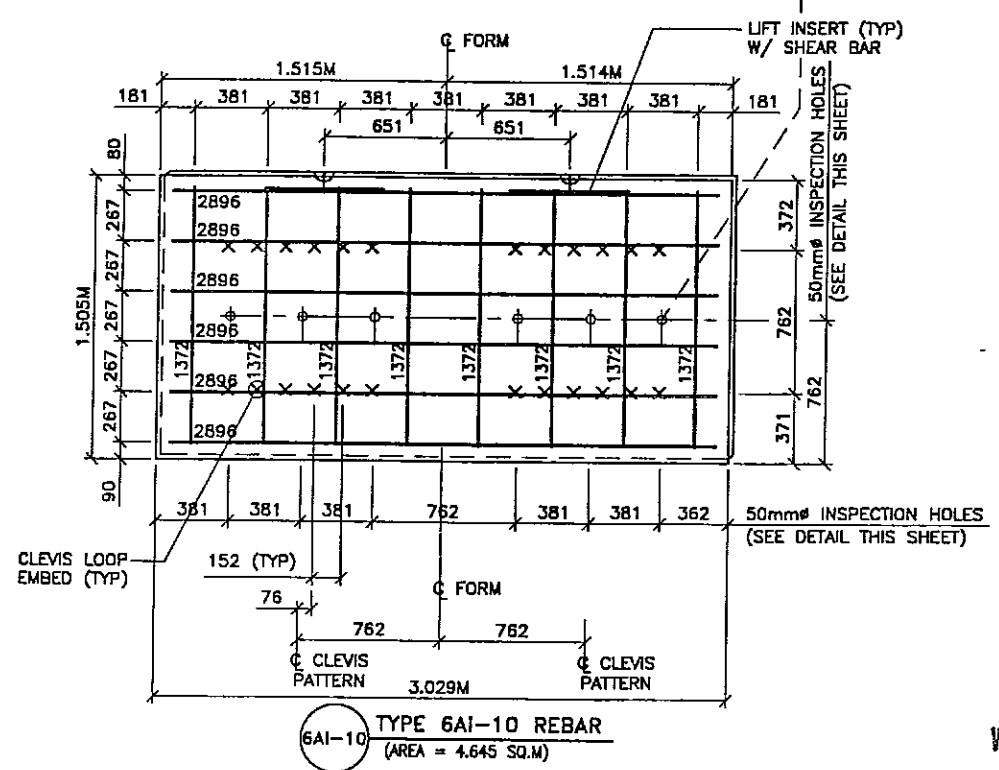
E-10 TYPE E-10 REBAR
(AREA = 5.419 SQ.M)



AI-10 TYPE AI-10 REBAR
(AREA = 4.645 SQ.M)



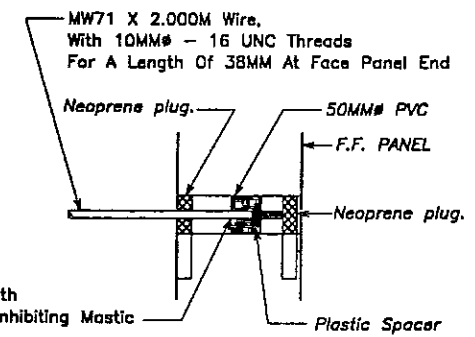
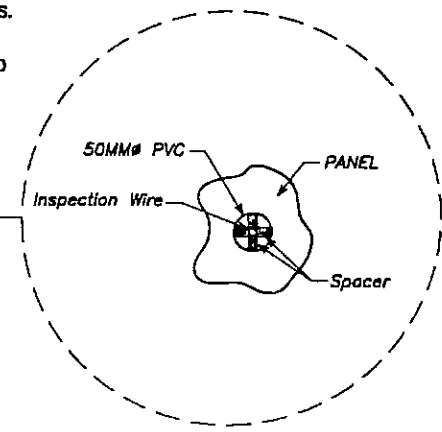
SAI-10 TYPE SAI-10 REBAR
(AREA = 4.645 SQ.M)



6AI-10 TYPE 6AI-10 REBAR
(AREA = 4.645 SQ.M)

- PANEL REINFORCEMENT NOTES:**
1. PANELS ARE SHOWN BACK FACE.
 2. HORIZONTAL REINFORCEMENT SHALL HAVE 50 mm MINIMUM COVER TO THE BACK FACE.
 3. ALL REINFORCEMENT SHALL HAVE 50 mm MINIMUM COVER TO THE SIDES.
 4. ALL REINFORCING BARS ARE #13 METRIC. LABELS ON EACH BAR INDICATE LENGTH. EXAMPLE: 1345 IS A #13 BAR 1345 mm LONG.
 5. PANEL REINFORCEMENT BARS SHALL BE DEFORMED BILLET STEEL BARS FOR CONCRETE REINFORCEMENT CONFORMING TO THE SPECIFICATIONS OF ASTM DESIGNATION A615, GRADE 60.
 6. ALL REINFORCING STEEL TO BE GALVANIZED IN ACCORDANCE WITH ASTM 767 CLASS I.
 7. CONCRETE PANELS TO HAVE 28 DAY COMPRESSIVE STRENGTH OF 25,200 KPa.
 8. EQUIVALENT WELDED WIRE FABRIC MAY BE USED.
 9. ALL PANELS TO USE 9.5mm# CLEVIS LOOPS.
 10. VSL RETAINED EARTH™ IS PROTECTED UNDER PATENT 4,725,170.
 11. SEE SHT NO. STD-1 FOR CLEVIS LOOP AND LIFT INSERT DETAILS.
 12. LIFT INSERTS ARE 6 3/4" LONG IN ALL PANELS LESS THAN 1.524M TALL. PANELS TALLER THAN 1.524M SHALL HAVE 11" LONG LIFT ANCHORS.

APPROVED FOR CONSTRUCTION			
NO.	DATE	DESCRIPTION	CHK
△	9-30-98	RELEASE FOR CONSTRUCTION	
△	5-21-99	ISSUED AS CSP	



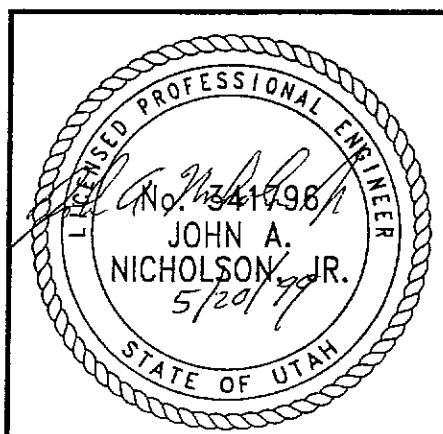
INSPECTION WIRE DETAIL
(PANEL FRONT FACE SHOWN)

WASATCH CONSTRUCTORS

JUN 17 1999

RELEASED FOR CONSTRUCTION

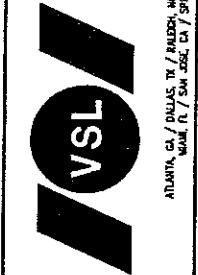
METRIC



CERTIFIED FOR INTERNAL STABILITY OF RETAINED EARTH™ STRUCTURES ONLY. EXTERNAL STABILITY, INCLUDING BUT NOT LIMITED TO FOUNDATION AND SLOPE STABILITY, IS THE RESPONSIBILITY OF THE OWNER. DESIGN IS BASED ON THE ASSUMPTION THAT THE MATERIAL WITHIN THE RETAINED EARTH™ MASS, METHODS OF CONSTRUCTION, AND QUALITY OF PREFABRICATED MATERIALS CONFORM TO THE MANUFACTURER'S SPECIFICATION.

DCS.	MM	DDO	MM	NO.	DATE	REVISION	CHK
12-19-97							
12-19-97							
12-19-97							

VSL CORPORATION
2600 Plaza Place, Suite 200
Raleigh, NC 27602
Telephone: (919) 781-4272
Fax: (919) 781-4998

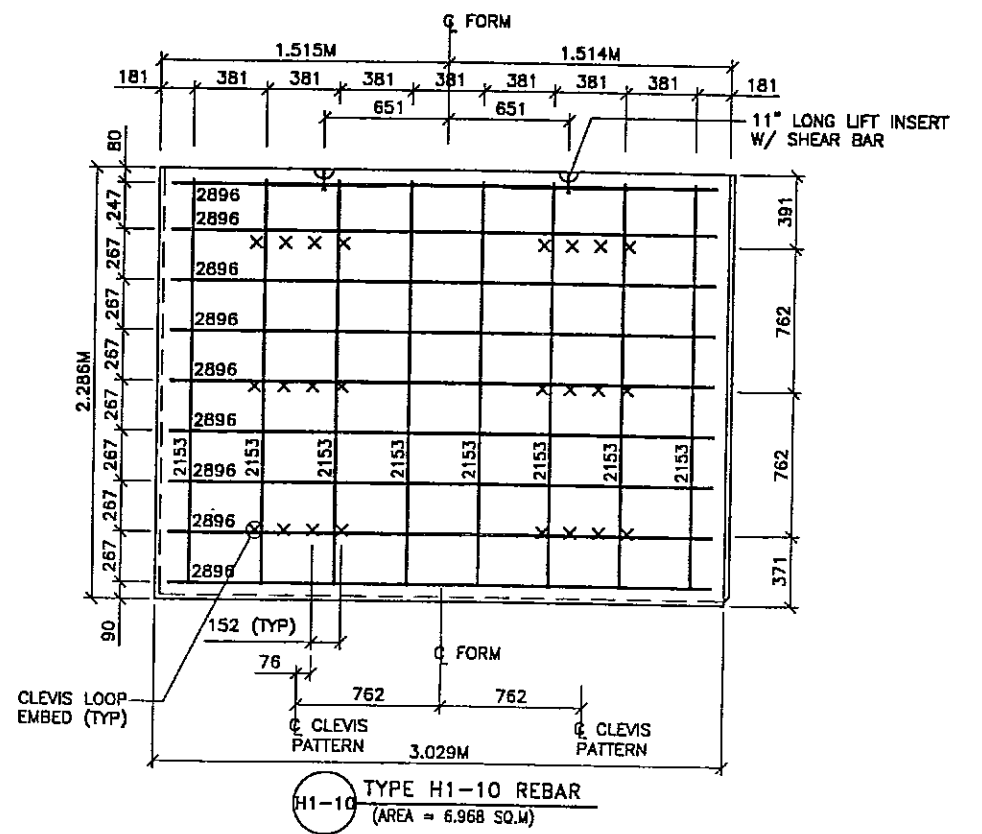
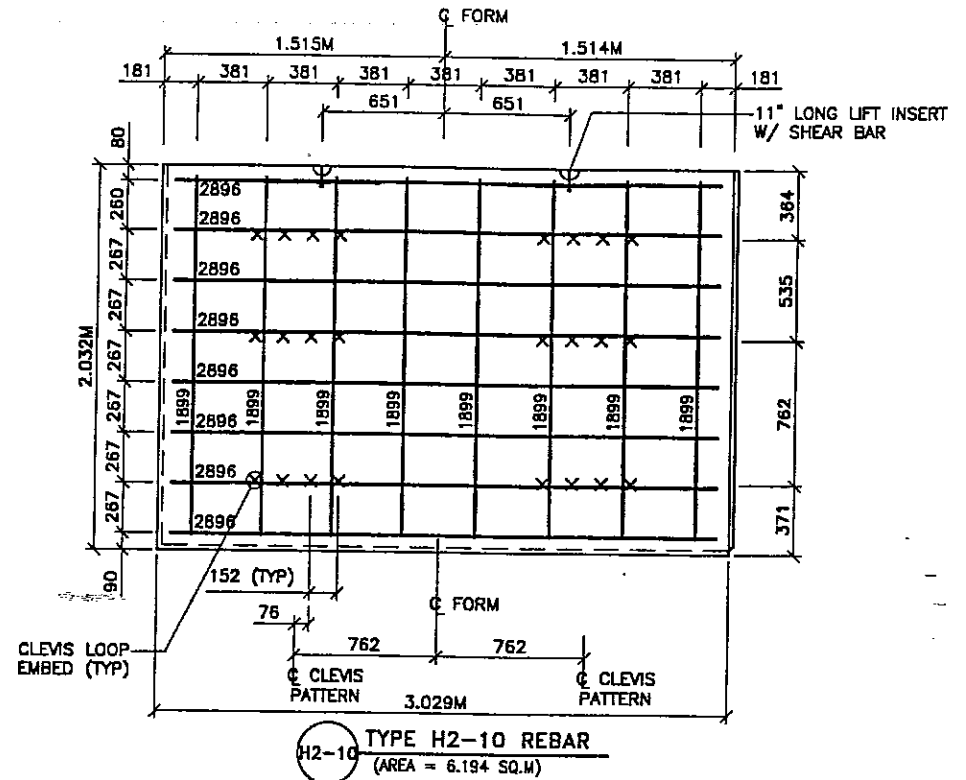
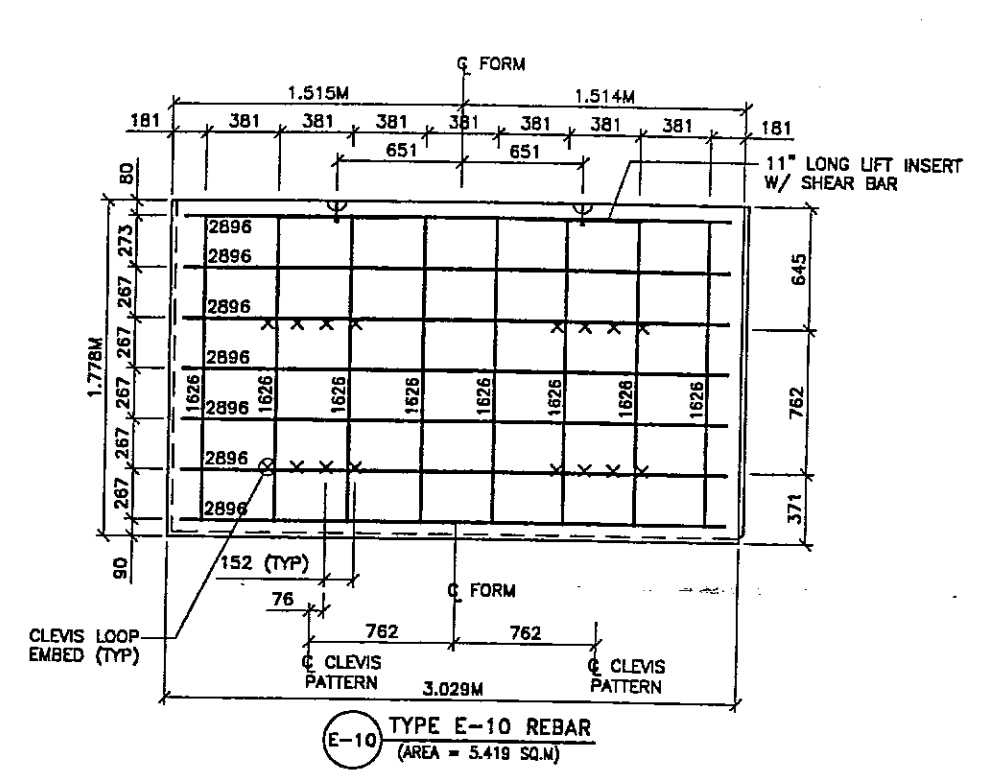


VSL Corporation (VSL) is a registered provider of continuing education for engineers, architects, planners, and interior designers. The use of this information for any purpose other than the specific project and location for which it was prepared is the responsibility of the user. VSL Corporation and its subsidiaries assume no liability for any errors or omissions in this document.

RETAINED EARTH™ WALLS
CORRIDOR STANDARD PLAN
"E" & "I" PANEL REINFORCEMENT 1.524Mx3.048M
UTAH I-15 INTERCHANGE
SALT LAKE COUNTY, UTAH
UTAH DEPARTMENT OF TRANSP.

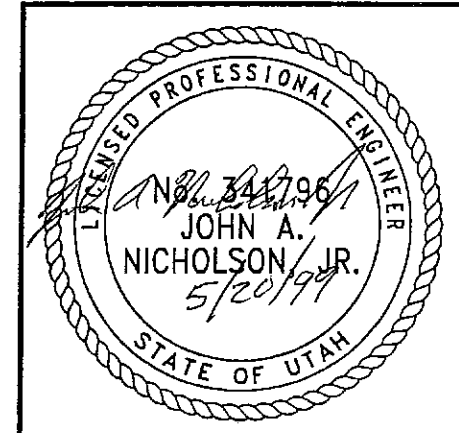
DWG. NO.	CS-302
JOB NO.	239-0007
SHT. NO.	STD-2

FINAL PLOT 08-01-97



- PANEL REINFORCEMENT NOTES:**
1. PANELS ARE SHOWN BACK FACE.
 2. HORIZONTAL REINFORCEMENT SHALL HAVE 50 mm MINIMUM COVER TO THE BACK FACE.
 3. ALL REINFORCEMENT SHALL HAVE 50 mm MINIMUM COVER TO THE SIDES.
 4. ALL REINFORCING BARS ARE #13 METRIC. LABELS ON EACH BAR INDICATE LENGTH. EXAMPLE: 1345 IS A #13 BAR 1345 mm LONG.
 5. PANEL REINFORCEMENT BARS SHALL BE DEFORMED BILLET STEEL BARS FOR CONCRETE REINFORCEMENT CONFORMING TO THE SPECIFICATIONS OF ASTM DESIGNATION A615, GRADE 60.
 6. ALL REINFORCING STEEL TO BE GALVANIZED IN ACCORDANCE WITH ASTM 767 CLASS I.
 7. CONCRETE PANELS TO HAVE 28 DAY COMPRESSIVE STRENGTH OF 25,200 KPa.
 8. EQUIVALENT WELDED WIRE FABRIC MAY BE USED.
 9. ALL PANELS TO USE 9.5mm# CLEVIS LOOPS.
 10. VSL RETAINED EARTH™ IS PROTECTED UNDER PATENT 4,725,170.
 11. SEE SHT NO. STD-1 FOR CLEVIS LOOP AND LIFT INSERT DETAILS.
 12. LIFT INSERTS ARE 6 3/4" LONG IN ALL PANELS LESS THAN 1.524M TALL. PANELS TALLER THAN 1.524M SHALL HAVE 11" LONG LIFT ANCHORS.

WASATCH CONSTRUCTORS
 JUN 17 1999
 RELEASED FOR CONSTRUCTION
 METRIC



CERTIFIED FOR INTERNAL STABILITY OF RETAINED EARTH™ STRUCTURES ONLY. EXTERNAL STABILITY, INCLUDING BUT NOT LIMITED TO FOUNDATION AND SLOPE STABILITY, IS THE RESPONSIBILITY OF THE OWNER. DESIGN IS BASED ON THE ASSUMPTION THAT THE MATERIAL WITHIN THE RETAINED EARTH™ MASS, METHODS OF CONSTRUCTION, AND QUALITY OF PREFABRICATED MATERIALS CONFORM TO THE MANUFACTURER'S SPECIFICATION.

APPROVED FOR CONSTRUCTION		
NO.	DATE	DESCRIPTION
△	9-30-98	RELEASE FOR CONSTRUCTION
△	5-21-99	ISSUED AS CSP

NO.	DATE	REVISION	BY	CHK

VSL CORPORATION
 2840 Penco Place, Suite 200
 Raleigh, NC 27612
 Telephone: (919) 781-4272
 Fax: (919) 781-4658



ATLANTA, GA. / DALLAS, TX. / RALEIGH, NC (CORPORATE OFFICE)
 MIAMI, FL / SAN JOSE, CA / SPRINGFIELD, VA

VSL Corporation (VSL) owns a U.S. patent for its Retained Earth™ system. VSL Corporation and its subsidiaries are not responsible for any claims or damages resulting from the use of this information in any project, in any region, which is not prepared and constructed in accordance with the specifications and standards published by VSL. VSL Corporation disclaims any liability therefor.

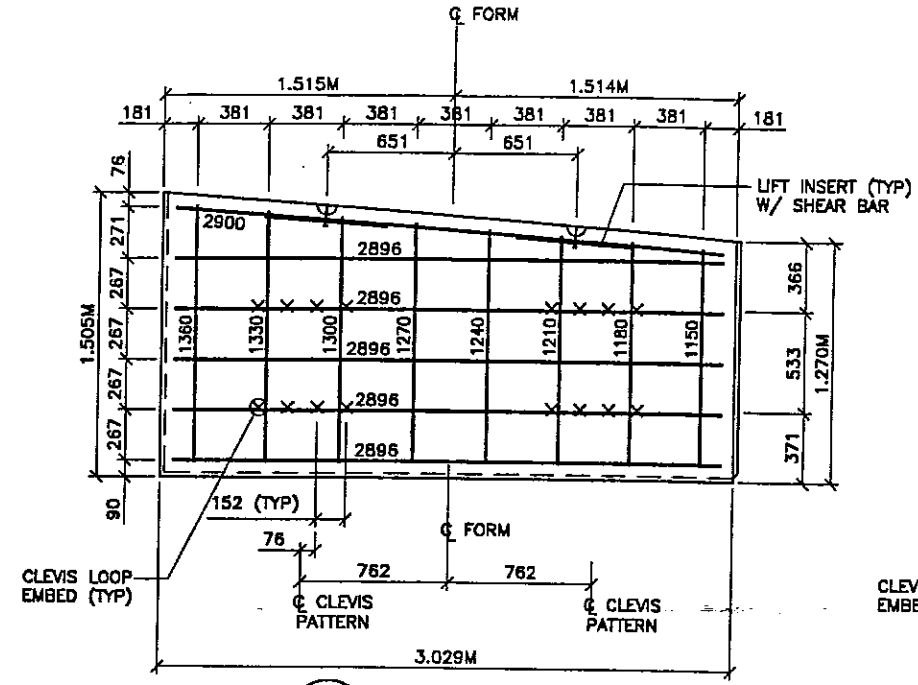
RETAINED EARTH™ WALLS
 CORRIDOR STANDARD PLAN
 PANEL REINFORCEMENT 1.524M x 3.048M
 UTAH 1-15 INTERCHANGE
 SALT LAKE COUNTY, UTAH
 UTAH DEPARTMENT OF TRANSP.

DWG. NO.	CS-302A
JOB NO.	239-0007
SHT. NO.	RE-2A

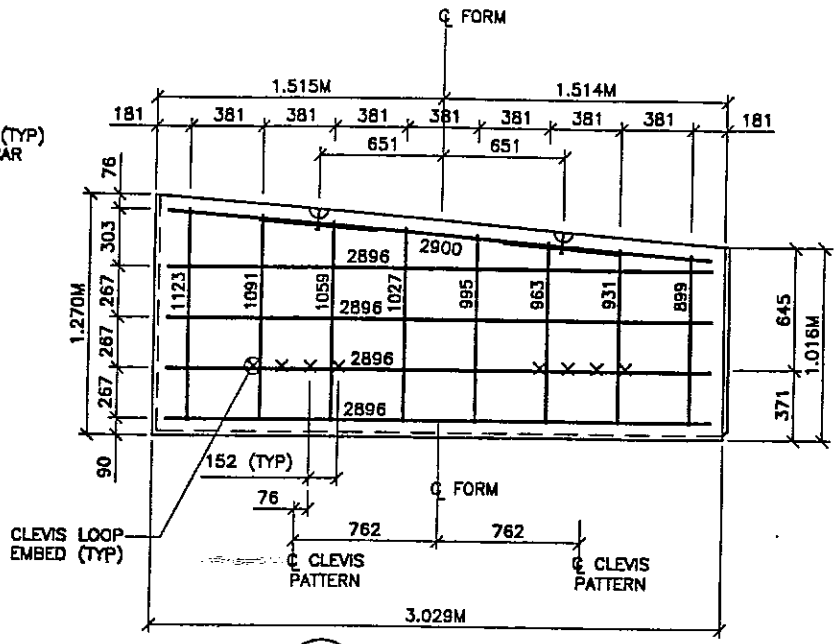
REFERENCE (X-UTAH)DWG

H:\RE_EARTH\PROJECT\239-0007\REBAR\TYPE-3\BAR-5X10

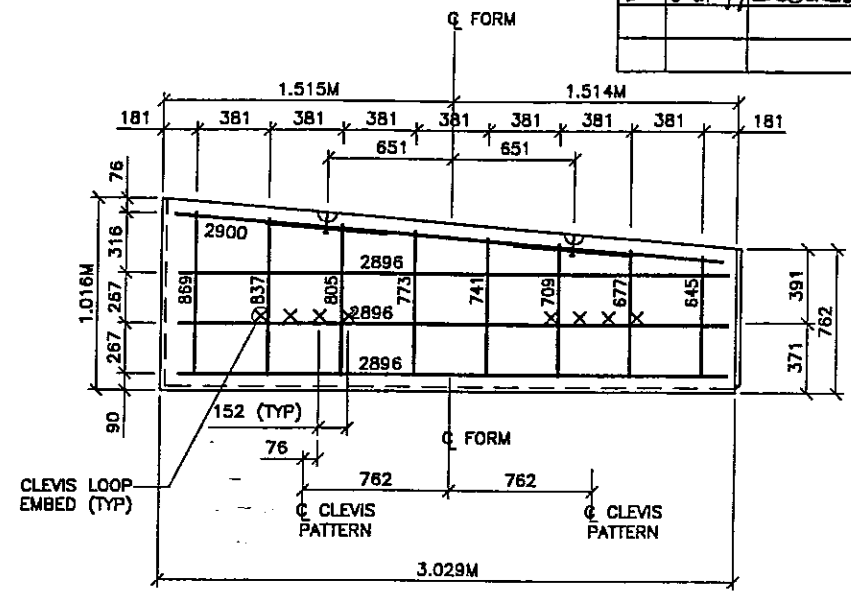
FINAL PLOT 12-19-97



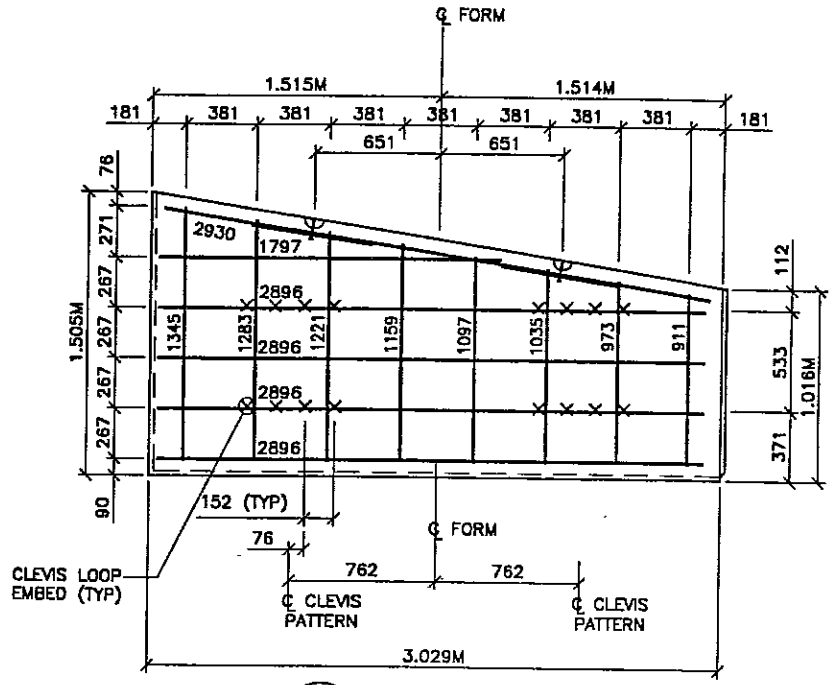
G1-10L TYPE G1-10L SHOWN
 (TYPE G1-10R OPPOSITE HAND)
 (AREA = 4.258 SQ.M)



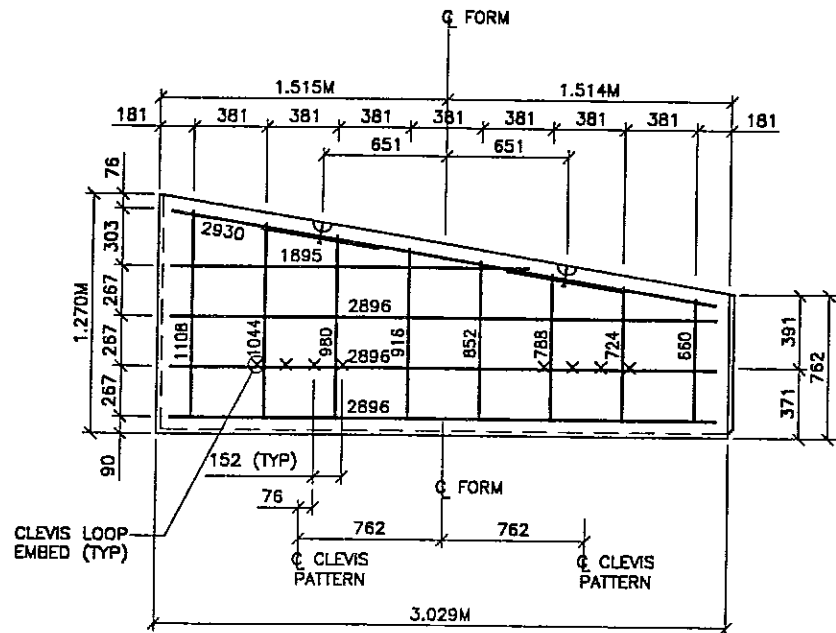
G2-10L TYPE G2-10L SHOWN
 (TYPE G2-10R OPPOSITE HAND)
 (AREA = 3.483 SQ.M)



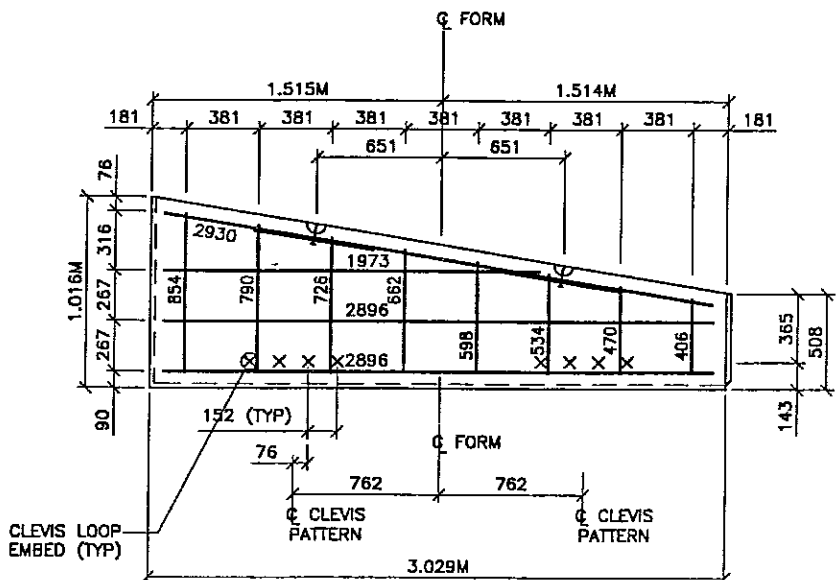
G3-10L TYPE G3-10L SHOWN
 (TYPE G3-10R OPPOSITE HAND)
 (AREA = 2.710 SQ.M)



G6-10L TYPE G6-10L SHOWN
 (TYPE G6-10R OPPOSITE HAND)
 (AREA = 3.869 SQ.M)



G7-10L TYPE G7-10L SHOWN
 (TYPE G7-10R OPPOSITE HAND)
 (AREA = 3.097 SQ.M)



G8-10L TYPE G8-10L SHOWN
 (TYPE G8-10R OPPOSITE HAND)
 (AREA = 2.321 SQ.M)

APPROVED FOR CONSTRUCTION		
NO.	DATE	DESCRIPTION
9-30-98		RELEASE FOR CONSTRUCTION
5-21-99		ISSUED AS CSP

NO.	DATE	REVISION	CHK

- PANEL REINFORCEMENT NOTES:**
- PANELS ARE SHOWN BACK FACE.
 - HORIZONTAL REINFORCEMENT SHALL HAVE 50 mm MINIMUM COVER TO THE BACK FACE.
 - ALL REINFORCEMENT SHALL HAVE 50 mm MINIMUM COVER TO THE SIDES.
 - ALL REINFORCING BARS ARE #13 METRIC. LABELS ON EACH BAR INDICATE LENGTH. EXAMPLE: 1345 IS A #13 BAR 1345 mm LONG.
 - PANEL REINFORCEMENT BARS SHALL BE DEFORMED BILLET STEEL BARS FOR CONCRETE REINFORCEMENT CONFORMING TO THE SPECIFICATIONS OF ASTM DESIGNATION A615, GRADE 60.

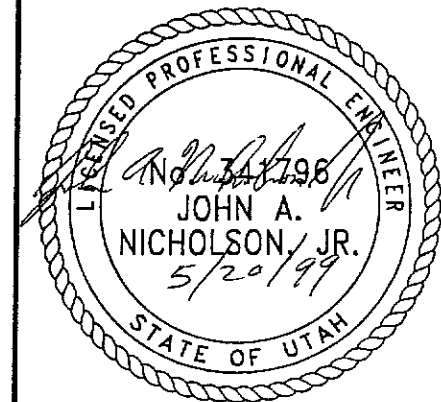
- ALL REINFORCING STEEL TO BE GALVANIZED IN ACCORDANCE WITH ASTM 767 CLASS I.
- CONCRETE PANELS TO HAVE 28 DAY COMPRESSIVE STRENGTH OF 25,200 KPa.
- EQUIVALENT WELDED WIRE FABRIC MAY BE USED.
- ALL PANELS TO USE 9.5mm# CLEVIS LOOPS.
- VSL RETAINED EARTH™ IS PROTECTED UNDER PATENT 4,725,170.
- SEE SHT NO. STD-1 FOR CLEVIS LOOP AND LIFT INSERT DETAILS.
- LIFT INSERTS ARE 6 3/4" LONG IN ALL PANELS LESS THAN 1.524M TALL. PANELS TALLER THAN 1.524M SHALL HAVE 11" LONG LIFT ANCHORS.

WASATCH CONSTRUCTORS

JUN 17 1999

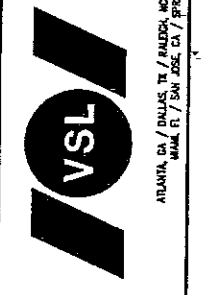
RELEASED FOR CONSTRUCTION METRIC

CERTIFIED FOR INTERNAL STABILITY OF RETAINED EARTH™ STRUCTURES ONLY. EXTERNAL STABILITY, INCLUDING BUT NOT LIMITED TO FOUNDATION AND SLOPE STABILITY, IS THE RESPONSIBILITY OF THE OWNER. DESIGN IS BASED ON THE ASSUMPTION THAT THE MATERIAL WITHIN THE RETAINED EARTH™ MASS, METHODS OF CONSTRUCTION, AND QUALITY OF PREFABRICATED MATERIALS CONFORM TO THE MANUFACTURER'S SPECIFICATION.



DES.	MM	DRN.	DDO	CHK.	MM	NO.	DATE
12-19-97		12-19-97					

VSL CORPORATION
 2840 Plaza Plaza, Suite 200
 Raleigh, NC 27613
 Telephone: (919) 761-6272
 Fax: (919) 761-6658



VSL Corporation (VSL) does a strict proprietary review of all drawings and calculations prepared by its employees. VSL does not assume any liability for the use of the drawings or calculations for any purpose other than that intended by VSL. VSL does not assume any liability for the use of the drawings or calculations for any purpose other than that intended by VSL.

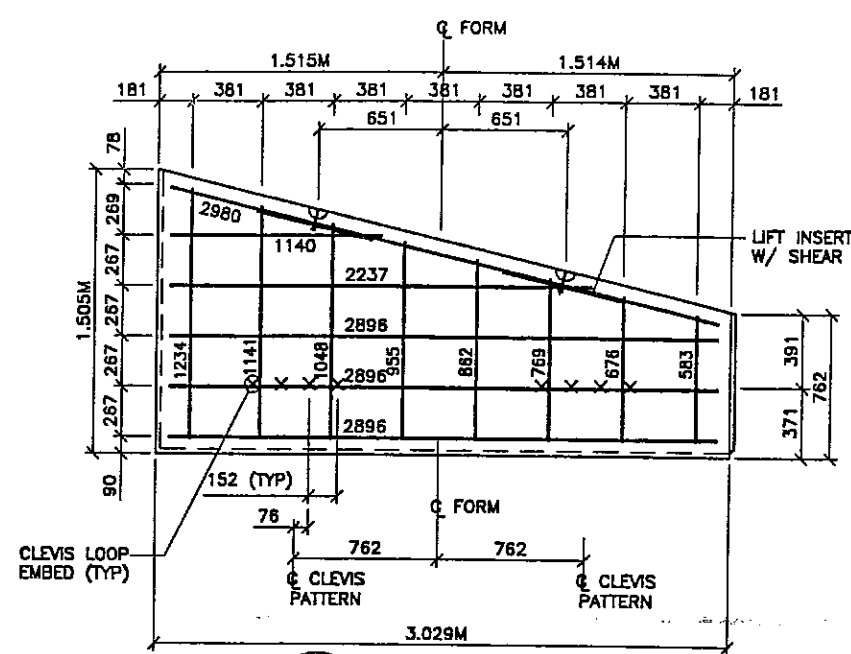
RETAINED EARTH™ WALLS
 CORRIDOR STANDARD PLAN
 "G" PANEL REINFORCEMENT 1.524M x 3.048M
 UTAH I-15 INTERCHANGE
 SALT LAKE COUNTY, UTAH
 UTAH DEPARTMENT OF TRANSP.

OWG. NO.	CS-303
JOB NO.	239-0007
SHT. NO.	STD-3

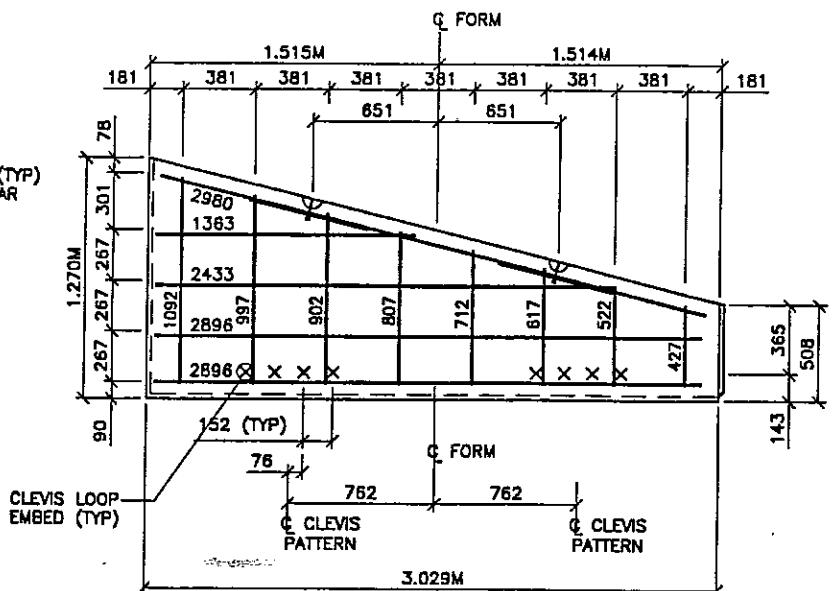
REFERENCE (X-UTAH.DWG)

H:\RE_EARTH\PROJECT\239-0007\REBAR\TYPE-3\BAR-SX10

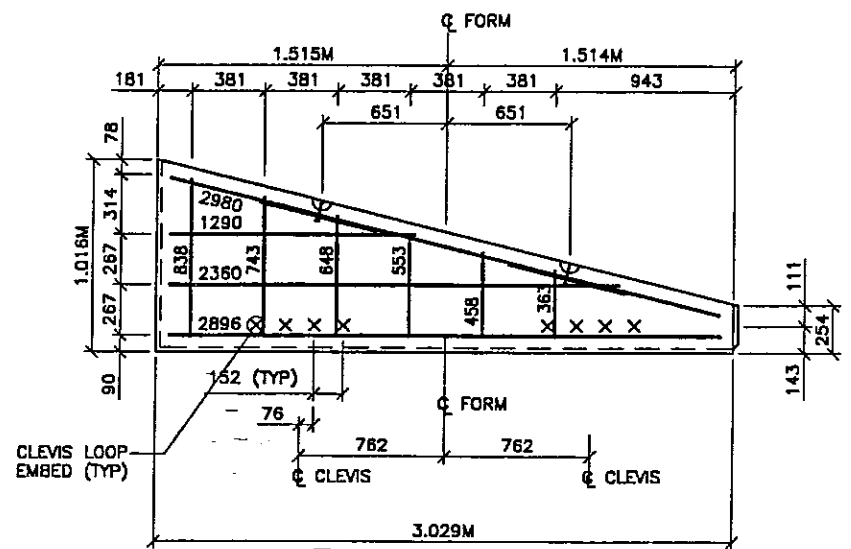
FINAL PLOT 12-19-97



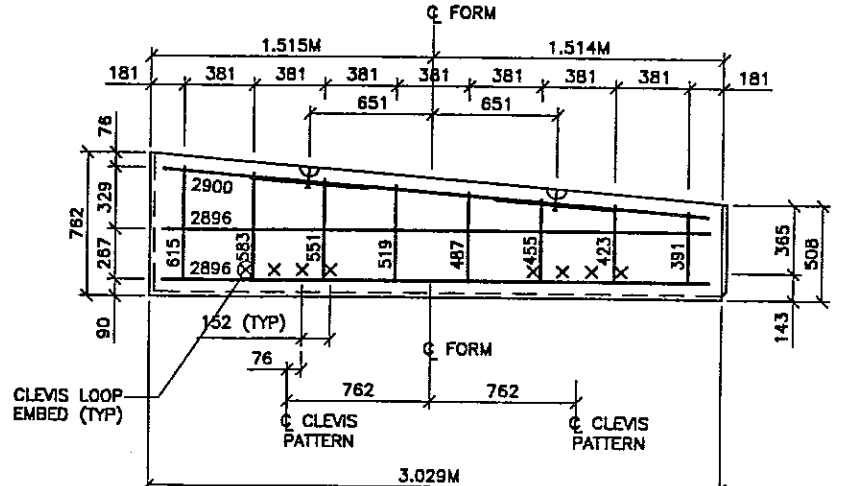
G11-10L TYPE G11-10L SHOWN
(TYPE G11-10R OPPOSITE HAND)
(AREA = 3.484 SQ.M)



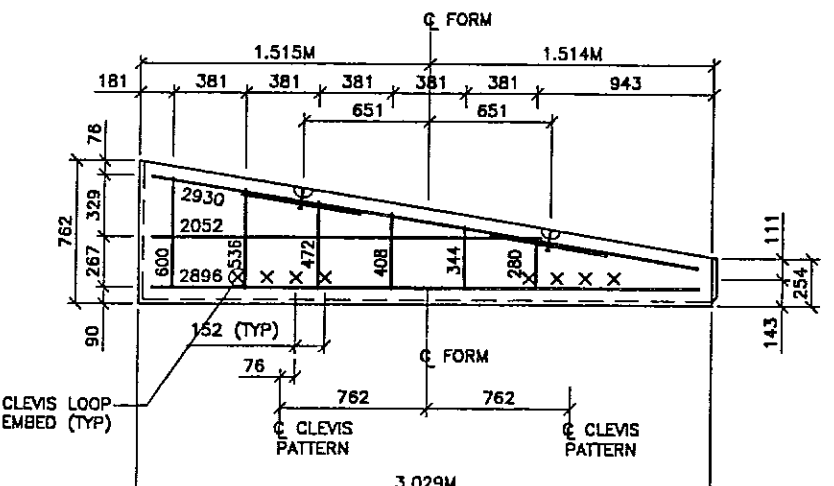
G12-10L TYPE G12-10L SHOWN
(TYPE G12-10R OPPOSITE HAND)
(AREA = 2.710 SQ.M)



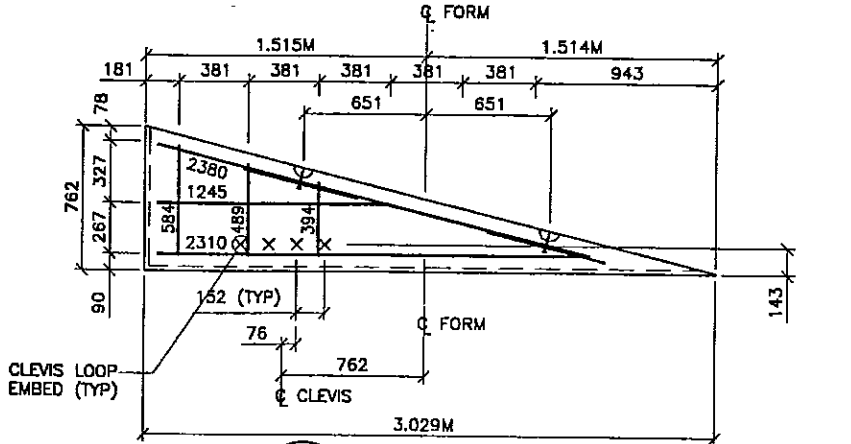
G13-10L TYPE G13-10L SHOWN
(TYPE G13-10R OPPOSITE HAND)
(AREA = 1.935 SQ.M)



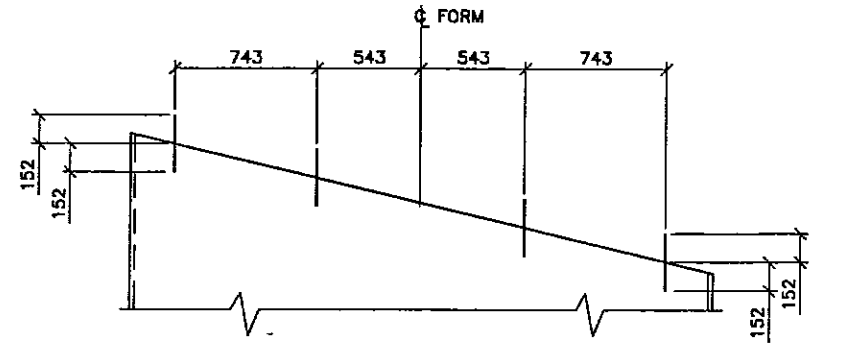
G4-10L TYPE G4-10L SHOWN
(TYPE G4-10R OPPOSITE HAND)
(AREA = 1.935 SQ.M)



G9-10L TYPE G9-10L SHOWN
(TYPE G9-10R OPPOSITE HAND)
(AREA = 1.547 SQ.M)



G14-10L TYPE G14-10L SHOWN
(TYPE G14-10R OPPOSITE HAND)
(AREA = 1.161 SQ.M)



T TYPE T REBAR
G1-10LT, G1-10RT, G2-10LT, G2-10RT, G3-10LT, G3-10RT, G4-10LT, G4-10RT, G6-10LT, G6-10RT, G7-10LT, G7-10RT, G8-10LT, G8-10RT, G9-10LT, G9-10RT, G11-10LT, G11-10RT, G12-10LT, G12-10RT, G13-10LT, G13-10RT, G14-10LT & G14-10RT HAVE 4-#13x304mm DOWELS (GALVANIZED)

- PANEL REINFORCEMENT NOTES:**
1. PANELS ARE SHOWN BACK FACE.
 2. HORIZONTAL REINFORCEMENT SHALL HAVE 50 mm MINIMUM COVER TO THE BACK FACE.
 3. ALL REINFORCEMENT SHALL HAVE 50 mm MINIMUM COVER TO THE SIDES.
 4. ALL REINFORCING BARS ARE #13 METRIC. LABELS ON EACH BAR INDICATE LENGTH. EXAMPLE: 1345 IS A #13 BAR 1345 mm LONG. PANEL REINFORCEMENT BARS SHALL BE DEFORMED BILLET STEEL BARS FOR CONCRETE REINFORCEMENT CONFORMING TO THE SPECIFICATIONS OF ASTM DESIGNATION A615, GRADE 60.
 - 5.
 6. ALL REINFORCING STEEL TO BE GALVANIZED IN ACCORDANCE WITH ASTM 767 CLASS I.
 7. CONCRETE PANELS TO HAVE 28 DAY COMPRESSIVE STRENGTH OF 25,200 KPa.
 8. EQUIVALENT WELDED WIRE FABRIC MAY BE USED.
 9. ALL PANELS TO USE 9.5mm# CLEVIS LOOPS.
 10. VSL RETAINED EARTH™ IS PROTECTED UNDER PATENT 4,725,170.
 11. SEE SHT NO. STD-1 FOR CLEVIS LOOP AND LIFT INSERT DETAILS.
 12. LIFT INSERTS ARE 6 3/4" LONG IN ALL PANELS LESS THAN 1.524M TALL. PANELS TALLER THAN 1.524M SHALL HAVE 11" LONG LIFT ANCHORS.

CERTIFIED FOR INTERNAL STABILITY OF RETAINED EARTH™ STRUCTURES ONLY. EXTERNAL STABILITY, INCLUDING BUT NOT LIMITED TO FOUNDATION AND SLOPE STABILITY, IS THE RESPONSIBILITY OF THE OWNER. DESIGN IS BASED ON THE ASSUMPTION THAT THE MATERIAL WITHIN THE RETAINED EARTH™ MASS, METHODS OF CONSTRUCTION, AND QUALITY OF PREFABRICATED MATERIALS CONFORM TO THE MANUFACTURER'S SPECIFICATION.

APPROVED FOR CONSTRUCTION			
NO.	DATE	DESCRIPTION	
9-30-98		RELEASE FOR CONSTRUCTION	
5-21-99		ISSUED AS CSP	

DES.	MM	12-19-97	CHK.	MM	12-19-97	NO.	DATE	REVISION	BY	CHK

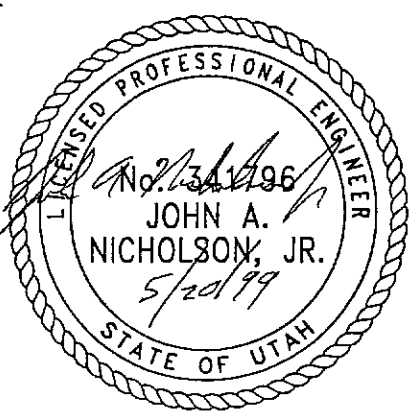
VSL CORPORATION
2810 Plaza Place, Suite 200
Raleigh, NC 27612
Telephone: (919) 781-8272
Fax: (919) 781-4869



VSL Corporation (VSL) is a world leader in the design and construction of retaining walls and structures. VSL's design and construction methods are based on extensive research and development. VSL's products are used in a wide variety of applications, including retaining walls, bridge abutments, and canal linings. VSL's products are designed to provide long-term stability and durability. VSL's products are used in a wide variety of applications, including retaining walls, bridge abutments, and canal linings. VSL's products are designed to provide long-term stability and durability.

RETAINED EARTH™ WALLS
CORRIDOR STANDARD PLAN
"G" PANEL REINFORCEMENT 1.524M x 3.048M
UTAH I-15 INTERCHANGE
SALT LAKE COUNTY, UTAH
UTAH DEPARTMENT OF TRANSP.

WASATCH CONSTRUCTORS
JUN 17 1999
RELEASED FOR CONSTRUCTION



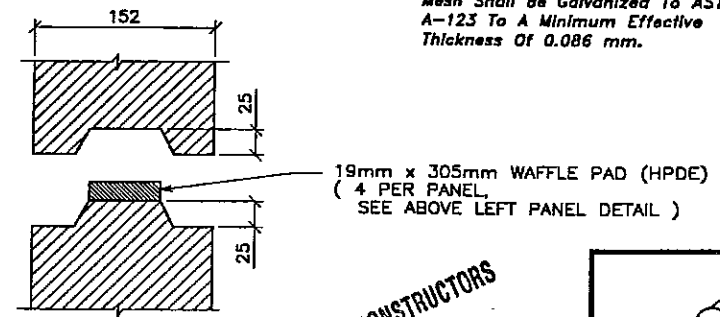
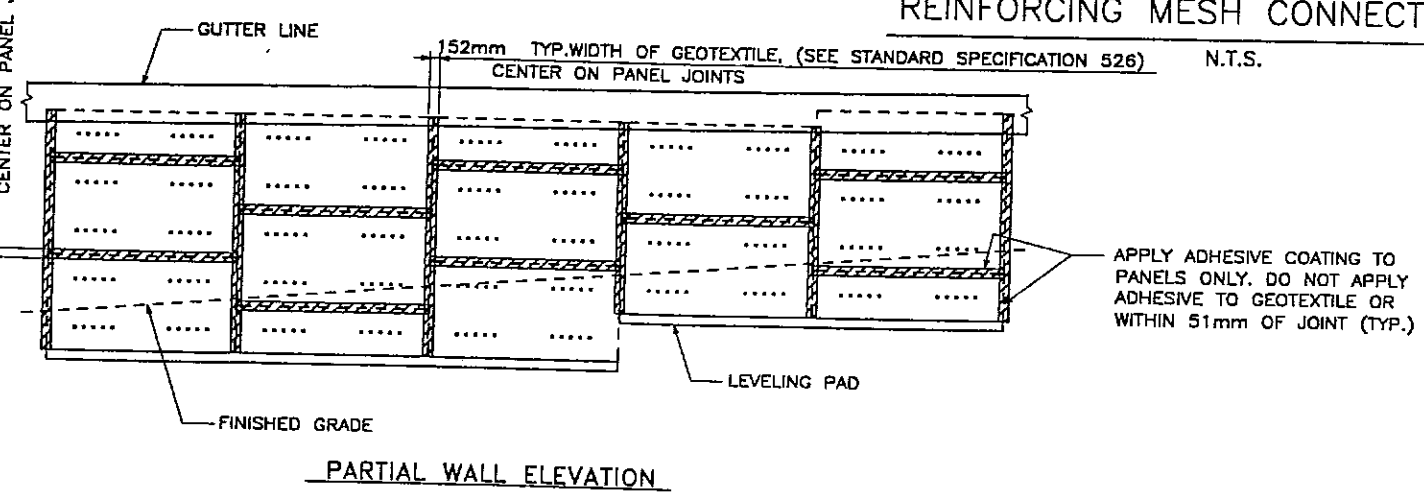
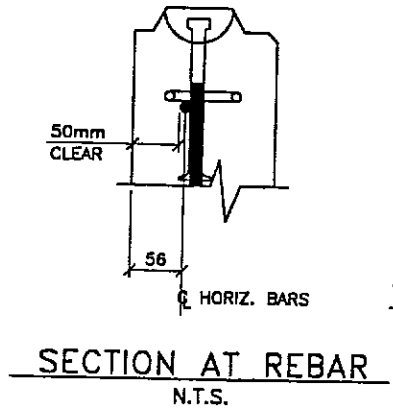
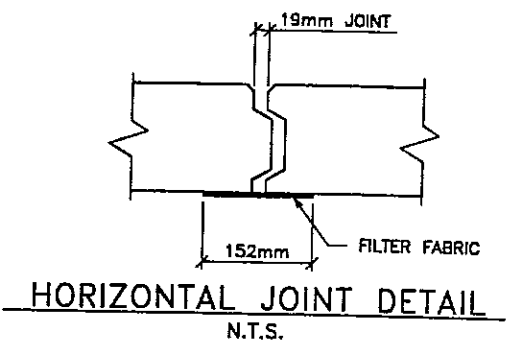
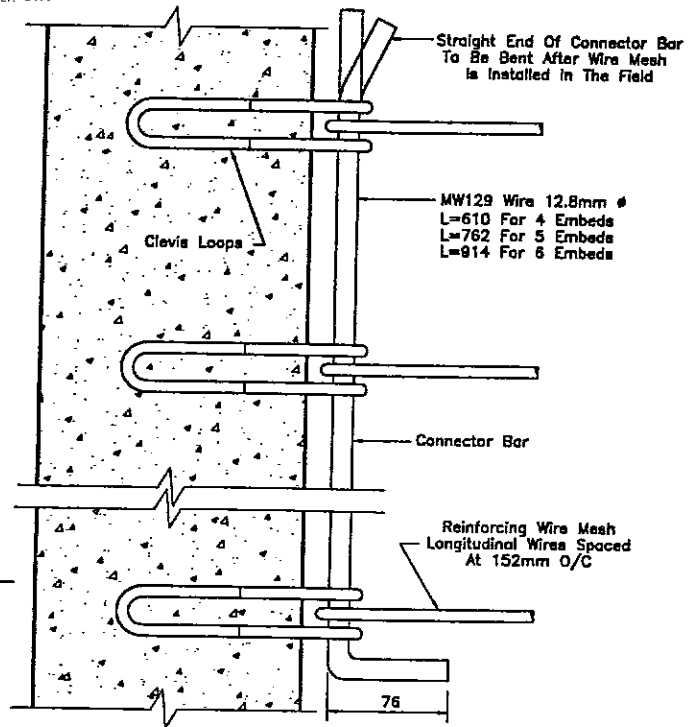
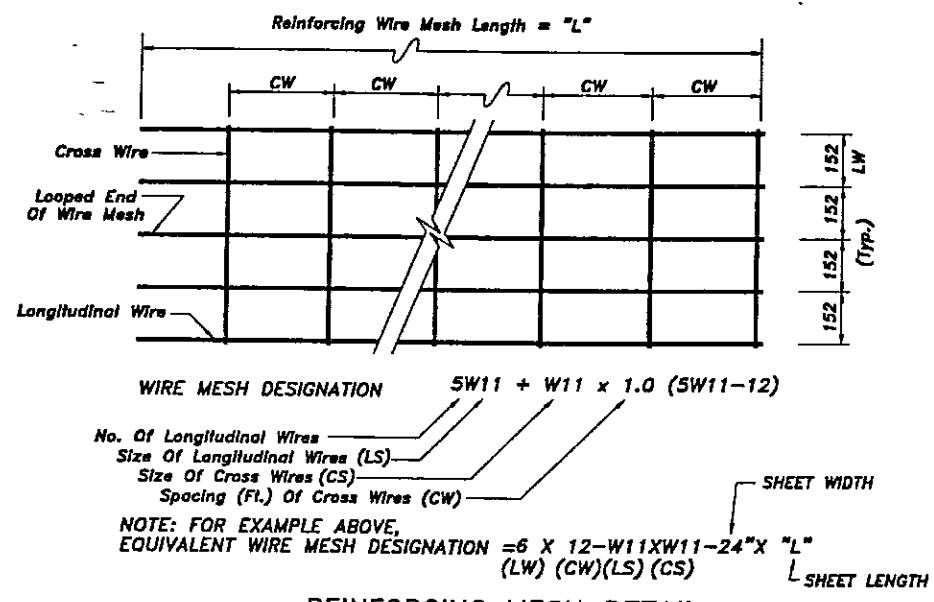
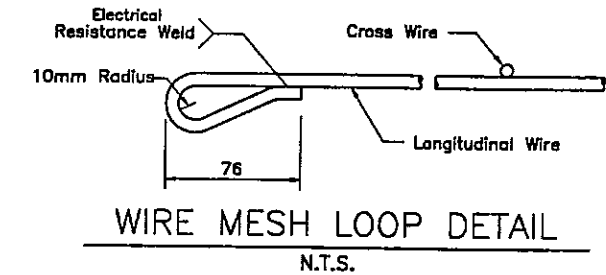
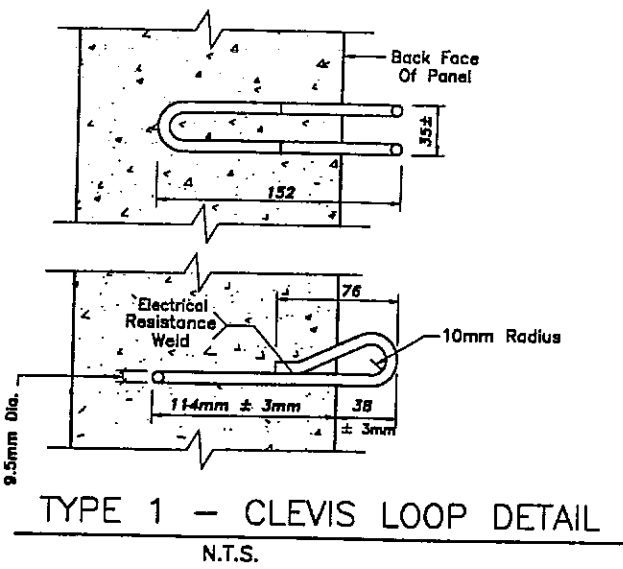
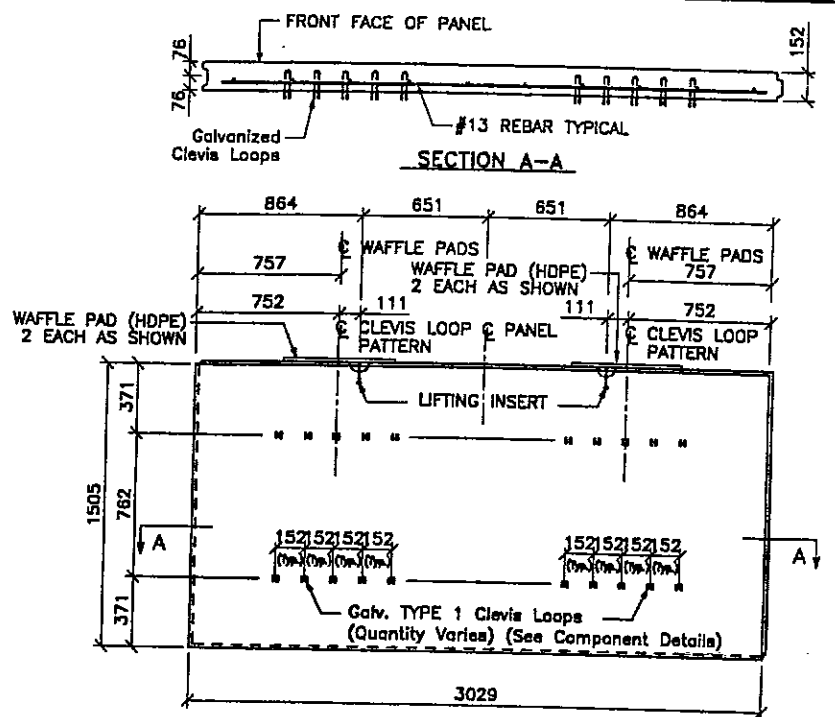
DWG. NO.	CS-304
JOB NO.	239-0007
SH. NO.	STD-4

FINAL PLOT 10-1-98

H:\RE_EARTH\PROJECT\239-0007\STD5\FRM-6

TENCE (X-UTAH)DWG

152mm TYP. WIDTH OF GEOTEXTILE, CLASS 2, TYPE A CENTER ON PANEL JOINTS



APPROVED FOR CONSTRUCTION		
NO.	DATE	DESCRIPTION
9-30-98		RELEASE FOR CONST.
5-2-99		ISSUED AS CSP

NO.	DATE	REVISION

VSL CORPORATION
2840 Pines Road, Suite 200
Raleigh, NC 27617
Telephone: (919) 781-8272
Facsimile: (919) 781-4669

VSL

ATLANTA, GA / DALLAS, TX / BALDWIN, NC (CORPORATE OFFICE)
MADE IN U.S.A. / SAN JOSE, CA / SPRINGFIELD, VA

VSL Corporation (VSL) claims a first proprietary Retained Earth™ wall system. Information is furnished for informational purposes only and is not intended to constitute an offer of insurance or any other financial product. VSL is not licensed to sell insurance or any other financial product. VSL does not assume any liability therefor.

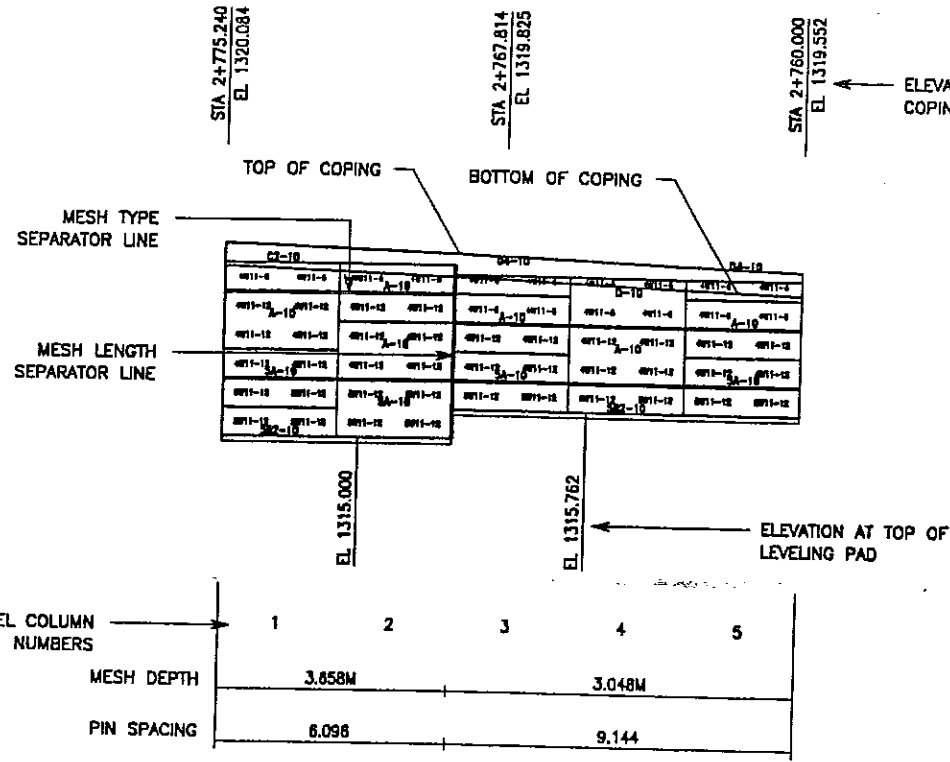
RETAINED EARTH™ WALLS
CORRIDOR STANDARD PLAN
SINGLE STAGE - TYPICAL DETAILS
UTAH I-15 INTERCHANGE
SALT LAKE COUNTY, UTAH
UTAH DEPARTMENT OF TRANSP.

MASATCH CONSTRUCTORS
JUN 17 1999
RELEASED FOR CONSTRUCTION
METRIC

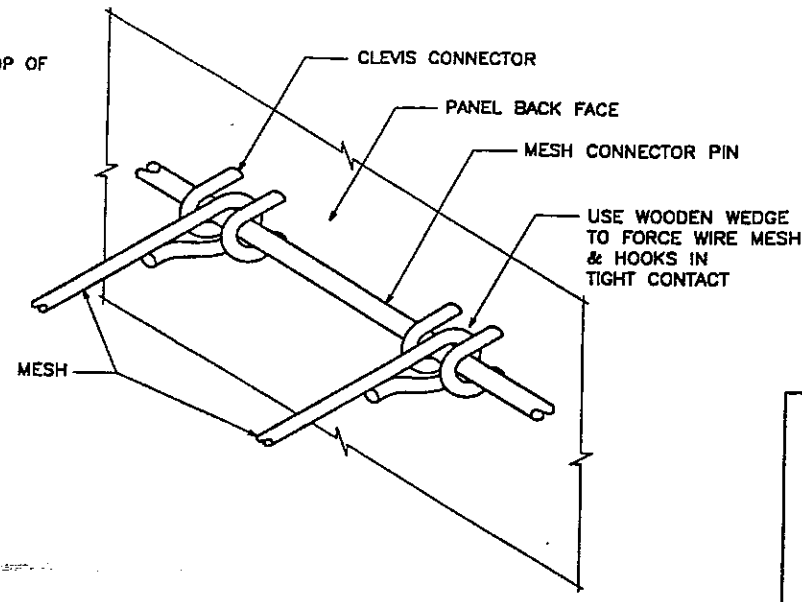
REGISTERED PROFESSIONAL ENGINEER
No. 341796
JOHN A. NICHOLSON, JR.
5/20/99
STATE OF UTAH

CERTIFIED FOR INTERNAL STABILITY OF RETAINED EARTH™ STRUCTURES ONLY. EXTERNAL STABILITY, INCLUDING BUT NOT LIMITED TO FOUNDATION AND SLOPE STABILITY, IS THE RESPONSIBILITY OF THE OWNER. DESIGN IS BASED ON THE ASSUMPTION THAT THE MATERIAL WITHIN THE RETAINED EARTH™ MASS, METHODS OF CONSTRUCTION, AND QUALITY OF PREFABRICATED MATERIALS CONFORM TO THE MANUFACTURER'S SPECIFICATION.

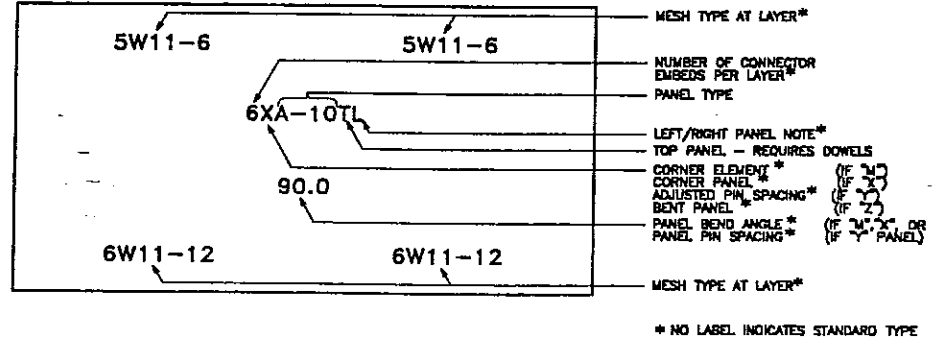
DWG. NO.	CS-306
JOB NO.	239-0007
SHT. NO.	STD-6



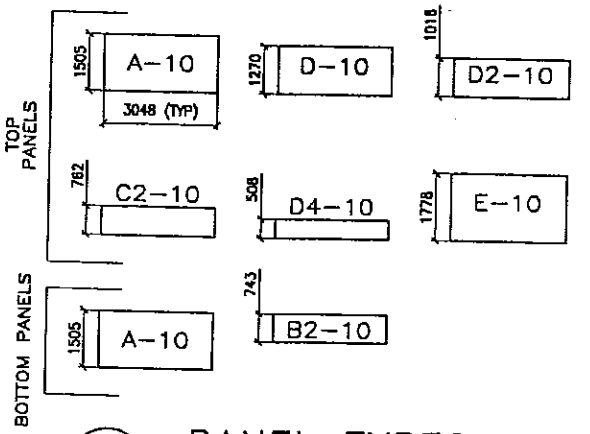
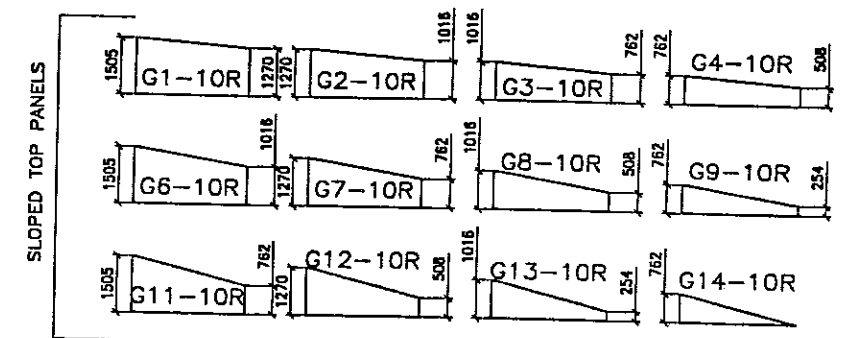
1 WALL ELEVATION KEY (FRONT FACE SHOWN)



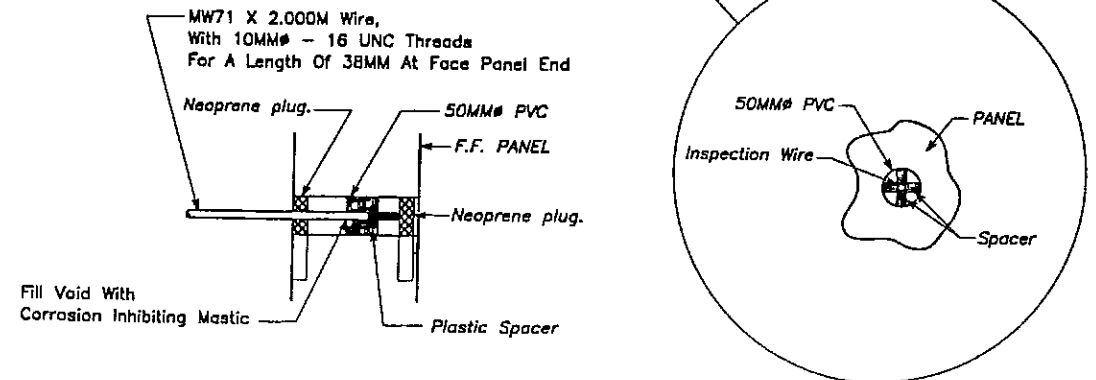
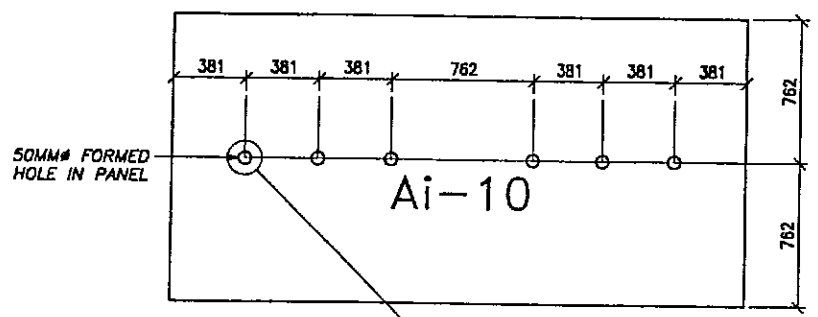
2 MESH CLEVIS CONNECTOR VSL RETAINED EARTH IS PROTECTED UNDER U.S. PATENT 4,725,170.



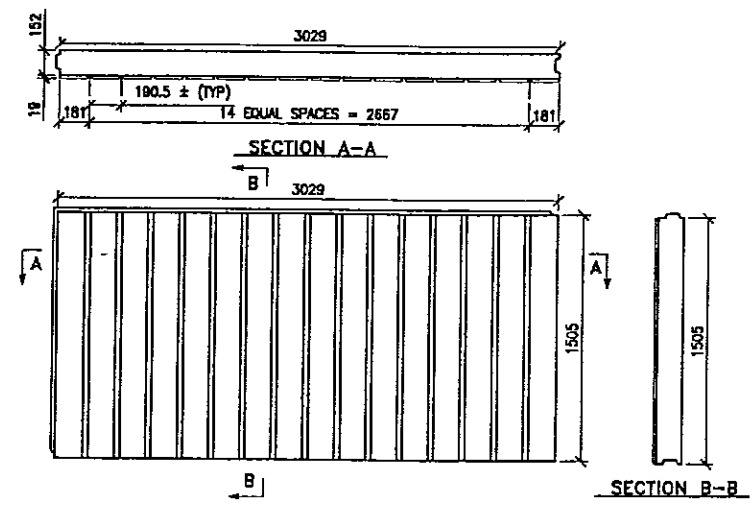
3 PANEL LABELS



4 PANEL TYPES ALL DIMENSIONS ARE IN MILLIMETERS

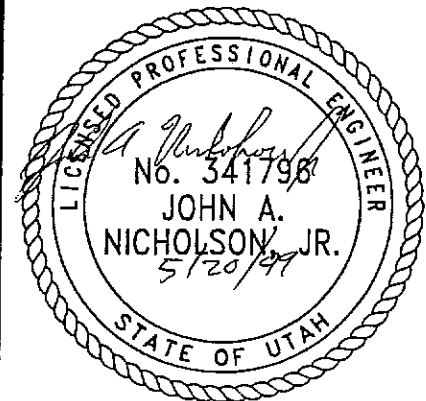


5 INSPECTION WIRE DETAIL (PANEL FRONT FACE SHOWN)



6 ARCHITECTURAL PANEL FINISH (PANEL FRONT FACE SHOWN)

WASATCH CONSTRUCTORS JUN 17 1999 RELEASED FOR CONSTRUCTION

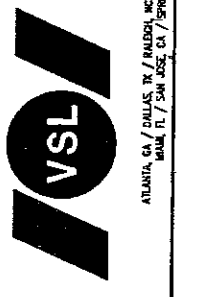


CERTIFIED FOR INTERNAL STABILITY OF RETAINED EARTH™ STRUCTURES ONLY. EXTERNAL STABILITY, INCLUDING BUT NOT LIMITED TO FOUNDATION AND SLOPE STABILITY, IS THE RESPONSIBILITY OF THE OWNER. DESIGN IS BASED ON THE ASSUMPTION THAT THE MATERIAL WITHIN THE RETAINED EARTH™ MASS, METHODS OF CONSTRUCTION, AND QUALITY OF PREFABRICATED MATERIALS CONFORM TO THE MANUFACTURER'S SPECIFICATION.

APPROVED FOR CONSTRUCTION		
NO.	DATE	DESCRIPTION
1	9-30-98	RELEASE FOR CONSTRUCTION
2	5-21-99	ISSUED AS CSP

NO.	DATE	REVISION	BY	CHK

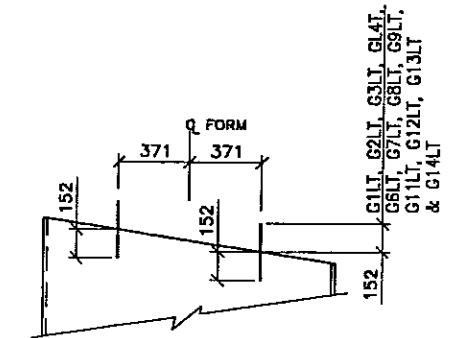
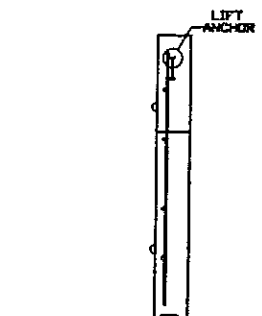
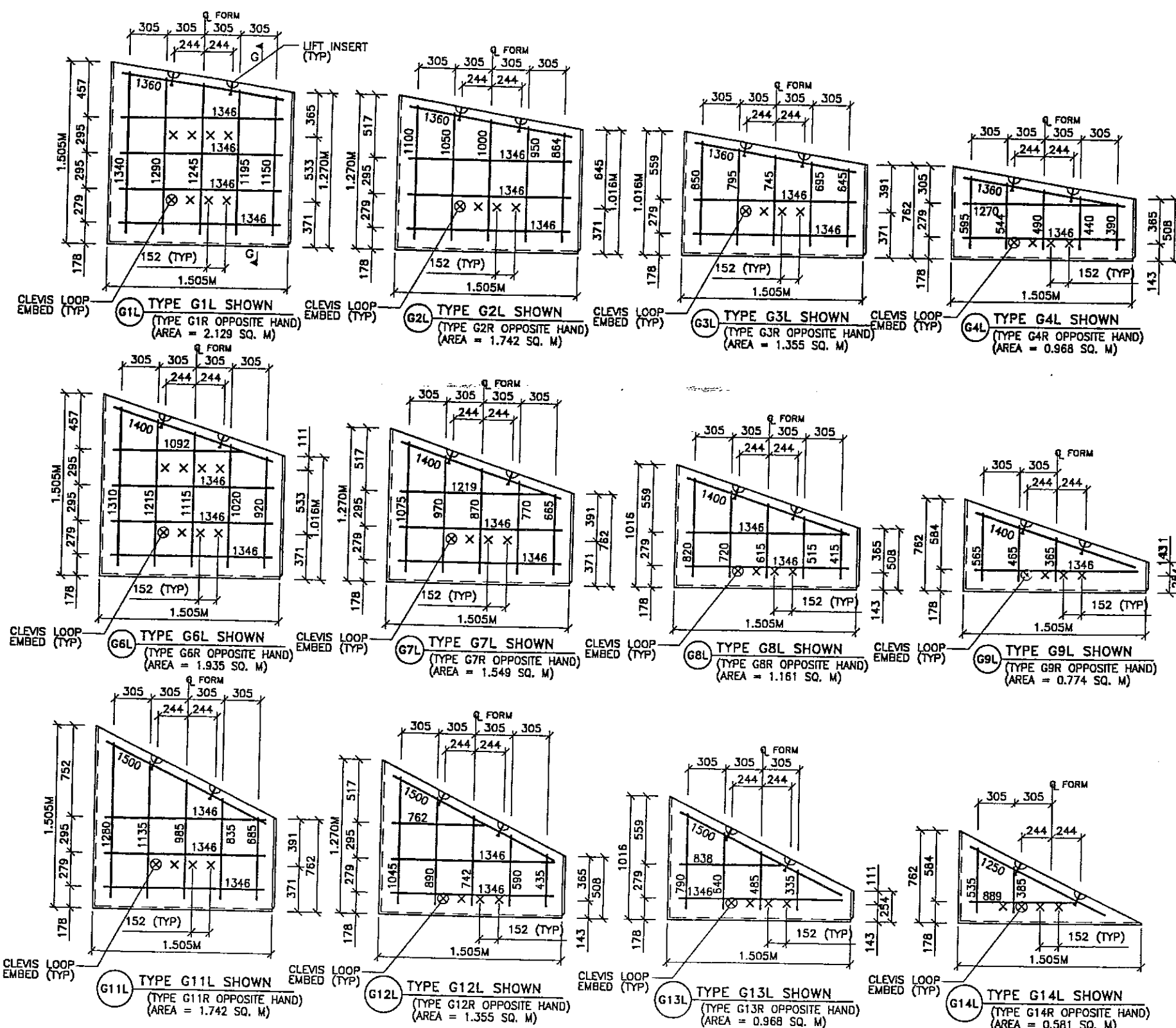
VSL CORPORATION
 2940 Peach Place, Suite 200
 Raleigh, NC 27612
 Telephone: (919) 781-8272
 Fax: (919) 781-4689



VSL Corporation (VSL) is a world leader in the design, construction and maintenance of retaining walls and earth retention systems. VSL has over 40 years of experience in the design and construction of retaining walls and earth retention systems. VSL is a member of the International Brotherhood of Bricklayers, Masons and Stone Masons, Local 1000, and the International Brotherhood of Teamsters, Local 1000.

RETAINED EARTH™ WALLS
 CORRIDOR STANDARD PLAN
 SINGLE STAGE - TYPICAL DETAILS
 UTAH I-15 INTERCHANGE
 SALT LAKE COUNTY, UTAH
 UTAH DEPARTMENT OF TRANSP.

DWG. NO.	CS-307
JOB NO.	239-0007
SHT. NO.	STD-7

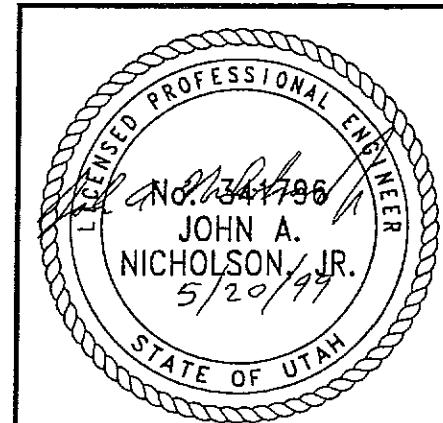


- PANEL REINFORCEMENT NOTES:**
1. PANELS ARE SHOWN BACK FACE.
 2. HORIZONTAL REINFORCEMENT SHALL HAVE 50 mm MINIMUM COVER TO THE BACK FACE.
 3. ALL REINFORCEMENT SHALL HAVE 50 mm MINIMUM COVER TO THE SIDES.
 4. ALL REINFORCING BARS ARE #13 METRIC. LABELS ON EACH BAR INDICATE LENGTH. EXAMPLE: 1345 IS A #13 BAR 1345 mm LONG.
 5. PANEL REINFORCEMENT BARS SHALL BE DEFORMED BILLET STEEL BARS FOR CONCRETE REINFORCEMENT CONFORMING TO THE SPECIFICATIONS OF ASTM DESIGNATION A615, GRADE 60.
 6. ALL REINFORCING STEEL TO BE GALVANIZED IN ACCORDANCE WITH ASTM 767 CLASS 1.
 7. CONCRETE PANELS TO HAVE 28 DAY COMPRESSIVE STRENGTH OF 25,200 KPa.
 8. EQUIVALENT WELDED WIRE FABRIC MAY BE USED.
 9. ALL PANELS TO USE 9.5mmØ CLEVIS LOOPS.
 10. VSL RETAINED EARTH™ IS PROTECTED UNDER PATENT 4,725,170.
 11. SEE SHEET STD-9 FOR CLEVIS LOOP AND LIFT INSERT DETAILS.

CERTIFIED FOR INTERNAL STABILITY OF RETAINED EARTH™ STRUCTURES ONLY. EXTERNAL STABILITY, INCLUDING BUT NOT LIMITED TO FOUNDATION AND SLOPE STABILITY, IS THE RESPONSIBILITY OF THE OWNER. DESIGN IS BASED ON THE ASSUMPTION THAT THE MATERIAL WITHIN THE RETAINED EARTH™ MASS, METHODS OF CONSTRUCTION, AND QUALITY OF PREFABRICATED MATERIALS CONFORM TO THE MANUFACTURER'S SPECIFICATION.

WASATCH CONSTRUCTORS
JUN 17 1999
RELEASED FOR CONSTRUCTION

METRIC



APPROVED FOR CONSTRUCTION		
NO.	DATE	DESCRIPTION
▲	9-30-98	RELEASE FOR CONSTRUCTION
▲	5-21-99	ISSUED AS CSP

DES.	MM	DD	MM	NO.	DATE	REVISION	BY	CHK
DES.	12-19-97	MM	DD					
DRN.	12-19-97	DD	MM					
CHK.	12-19-97	MM	MM					

VSL CORPORATION
2810 Plaza Place, Suite 200
Raleigh, NC 27612
Telephone: (919) 781-8272
Fax: (919) 781-4869



VSL Corporation (VSL) is a leading international provider of retaining wall and foundation solutions. Our products and services are designed to meet the most demanding and complex retaining wall and foundation requirements. For more information, please contact your local VSL representative or visit our website at www.vsl.com.

RETAINED EARTH™ WALLS
CORRIDOR STANDARD PLAN
"G" PANEL REINFORCEMENT 1.524M x 1.524M
UTAH I-15 INTERCHANGE
SALT LAKE COUNTY, UTAH
UTAH DEPARTMENT OF TRANSP.

DWG. NO.	CS-310
JOB NO.	239-0007
SHT. NO.	STD-10

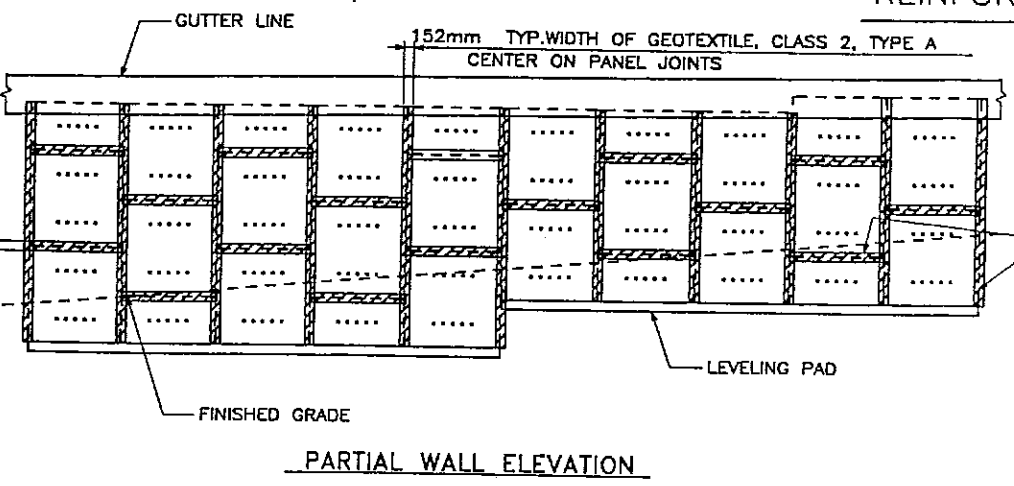
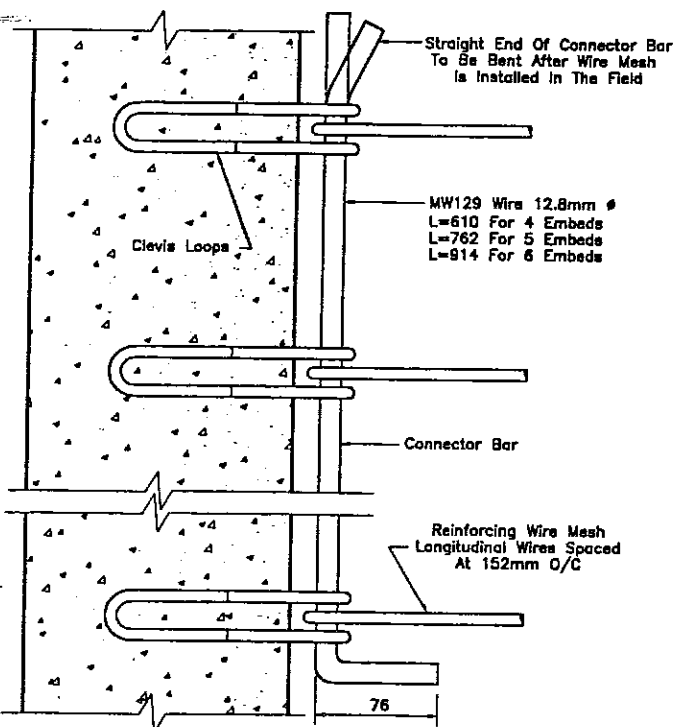
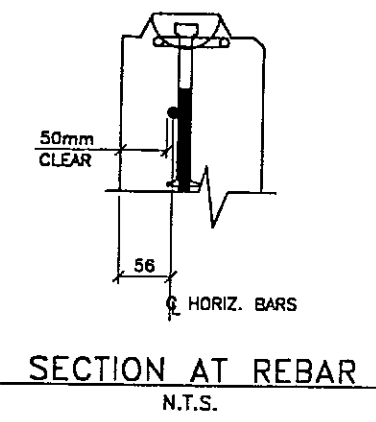
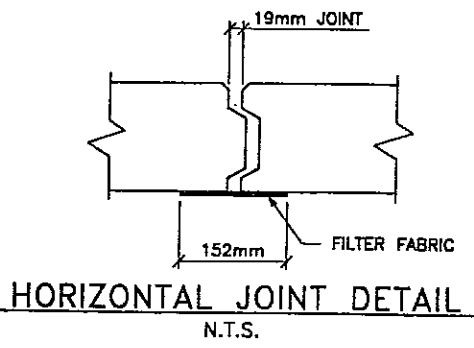
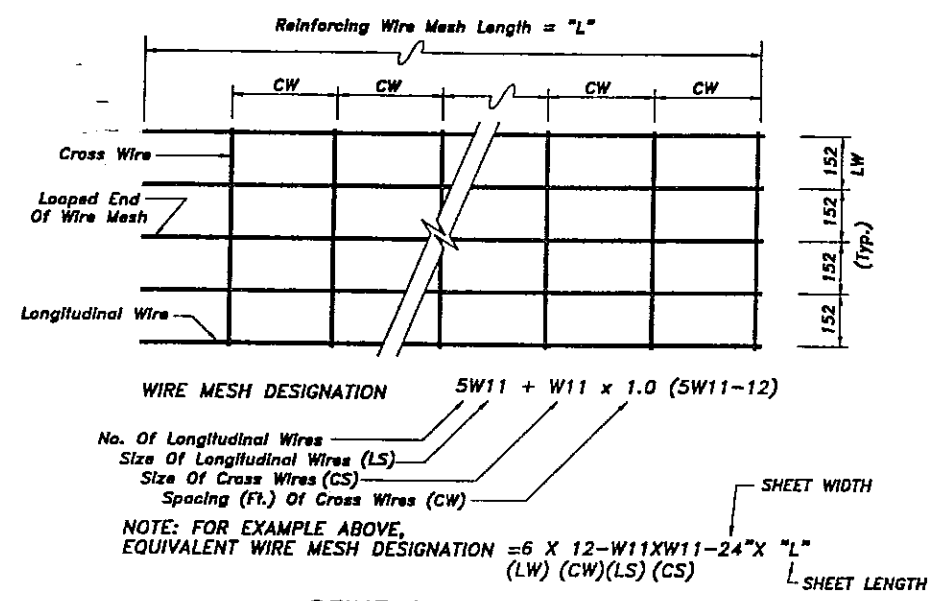
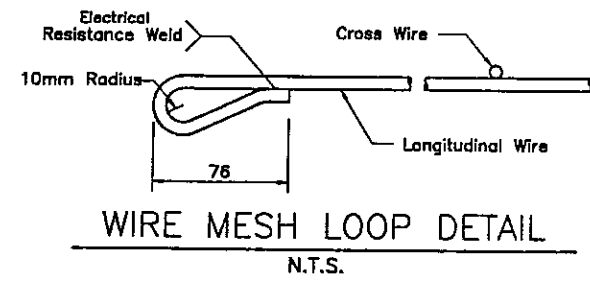
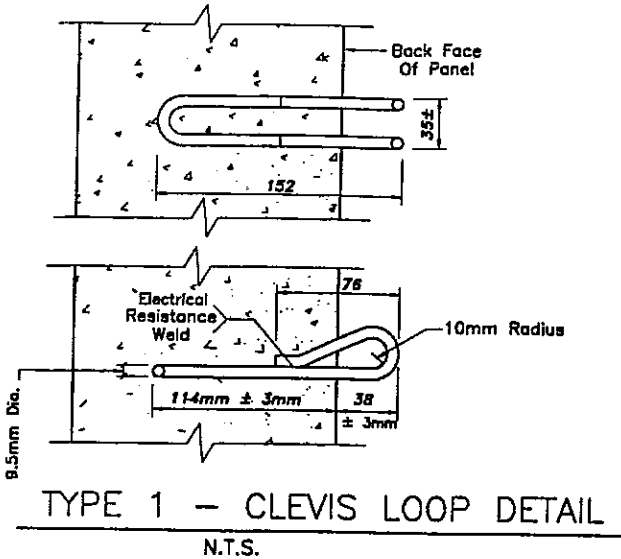
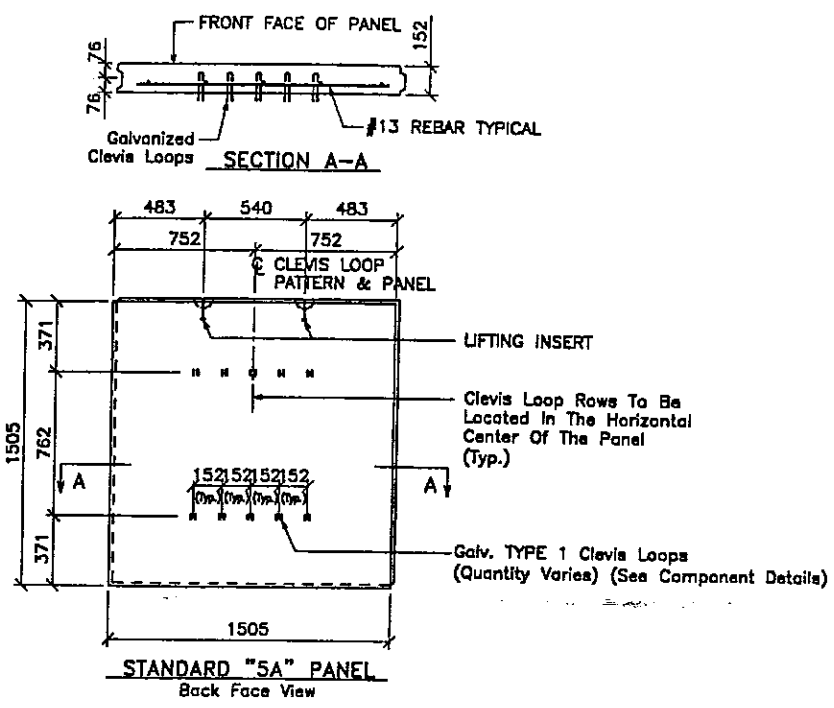
TRENCH (X-UTAH.DWG)

H:\RE_EARTH\PROJECT\239-0007\STDS\STD-11

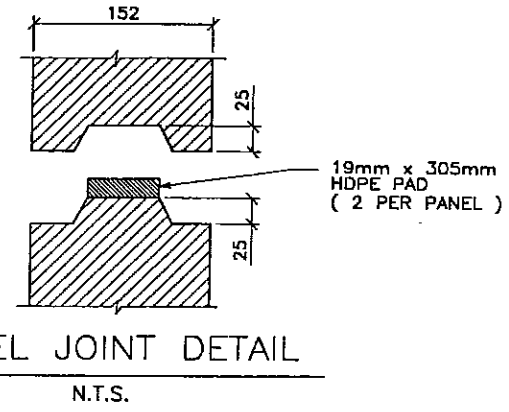
FINAL PLOT 12-19-97

APPROVED FOR CONSTRUCTION		
NO.	DATE	DESCRIPTION
△	9-30-98	RELEASE FOR CONSTRUCTION
△	5-21-99	ISSUED AS CGP

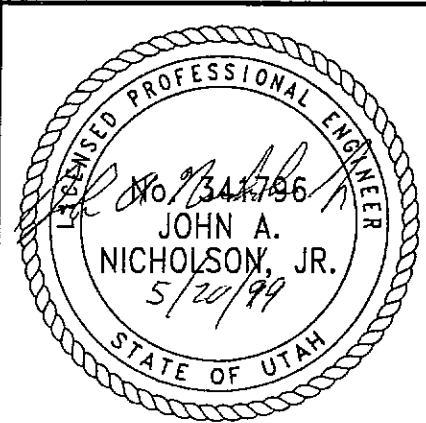
NO.	DATE	REVISION	BY	CHK



APPLY ADHESIVE COATING TO PANELS ONLY. DO NOT APPLY ADHESIVE TO GEOTEXTILE OR WITHIN 51mm OF JOINT (TYP.)



WASATCH CONSTRUCTORS
JUN 17 1999
RELEASED FOR CONSTRUCTION



CERTIFIED FOR INTERNAL STABILITY OF RETAINED EARTH™ STRUCTURES ONLY. EXTERNAL STABILITY, INCLUDING BUT NOT LIMITED TO FOUNDATION AND SLOPE STABILITY, IS THE RESPONSIBILITY OF THE OWNER. DESIGN IS BASED ON THE ASSUMPTION THAT THE MATERIAL WITHIN THE RETAINED EARTH™ MASS, METHODS OF CONSTRUCTION, AND QUALITY OF PREFABRICATED MATERIALS CONFORM TO THE MANUFACTURER'S SPECIFICATION.

VSL
VSL CORPORATION
2840 Plaza Plaza, Suite 200
Raleigh, NC 27612
Telephone: (919) 781-8872
Fax: (919) 781-6669

ATLANTA, GA / DALLAS, TX / DENVER, CO (SEPARATE OFFICE)
MIAMI, FL / SAN JOSE, CA / SPRINGFIELD, VA

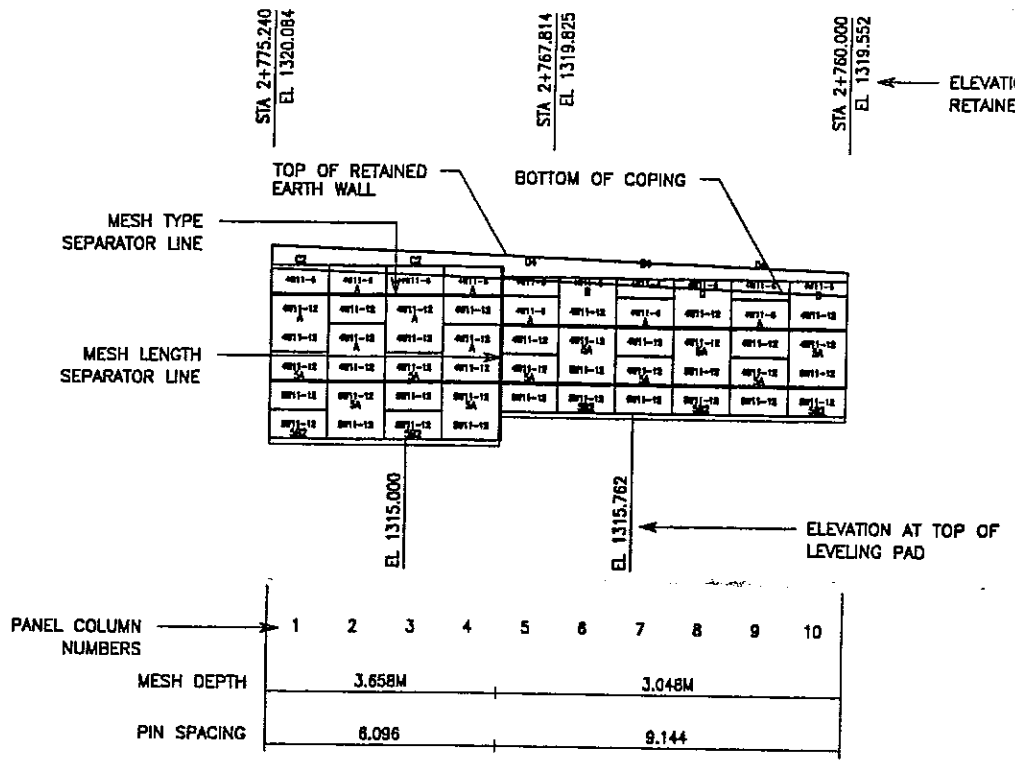
RETAINED EARTH™ WALLS
CORRIDOR STANDARD PLAN
SINGLE STAGE - TYPICAL DETAILS
UTAH I-15 INTERCHANGE
SALT LAKE COUNTY, UTAH
UTAH DEPARTMENT OF TRANSP.

DWG. NO.	CS-311
JOB NO.	239-0007
SHT. NO.	STD-11

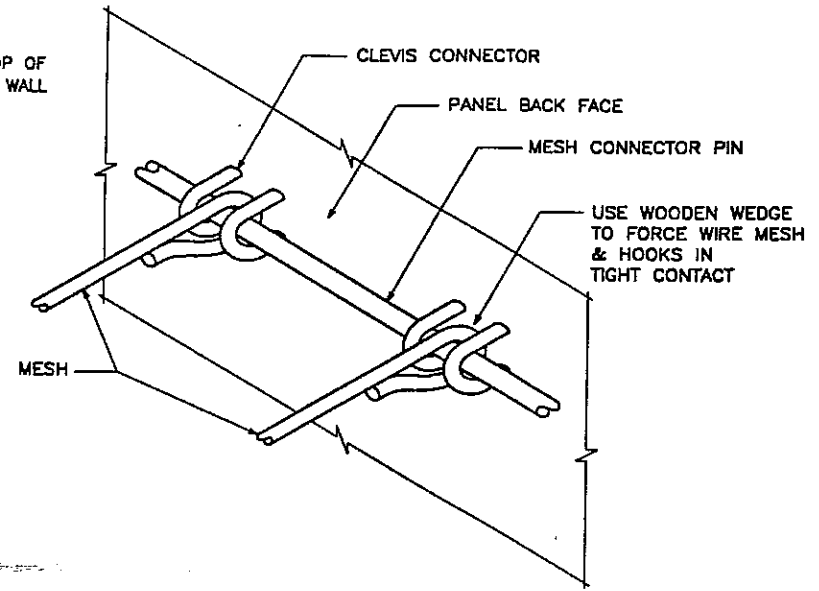
FINAL PLOT 12-19-97
 H:\RE_EARTH\PROJECT\239-0007\STDS\STD-12
 ENCE (X-UTAH.DWG)

APPROVED FOR CONSTRUCTION		
NO.	DATE	DESCRIPTION
⚠	9-30-98	RELEASE FOR CONSTRUCTION
⚠	5-21-99	ISSUED AS CSP

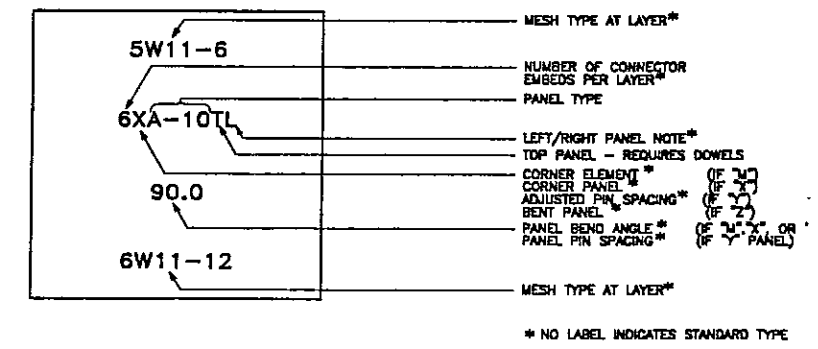
NO.	DATE	REVISION	CHK



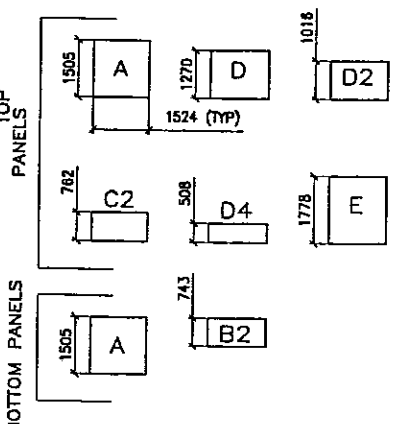
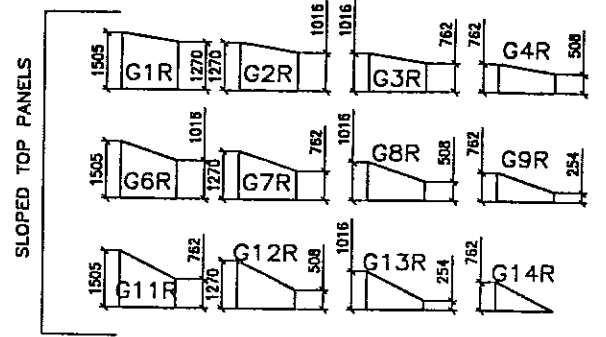
1 WALL ELEVATION KEY
(FRONT FACE SHOWN)



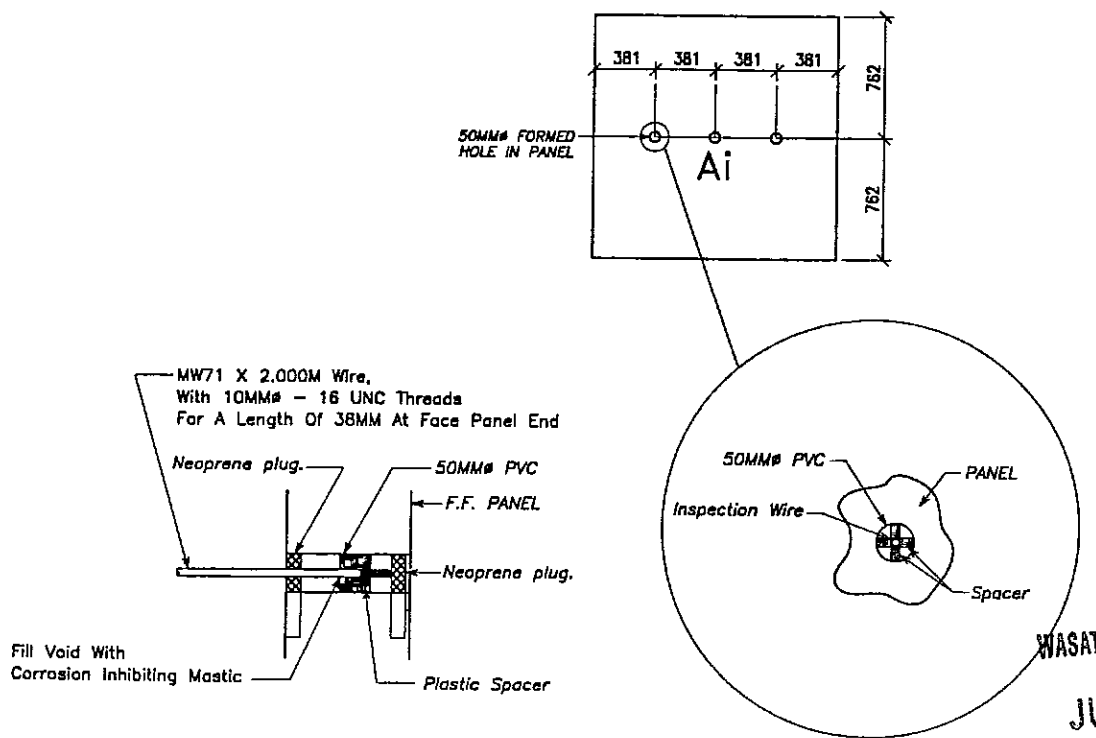
2 MESH CLEVIS CONNECTOR
VSL RETAINED EARTH IS PROTECTED UNDER U.S. PATENT 4,725,170.



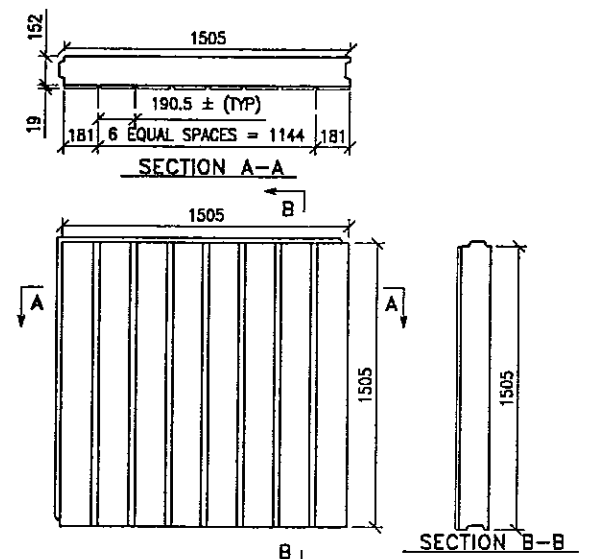
3 PANEL LABELS



4 PANEL TYPES
ALL DIMENSIONS ARE IN MILLIMETERS



5 INSPECTION WIRE DETAIL
(PANEL FRONT FACE SHOWN)

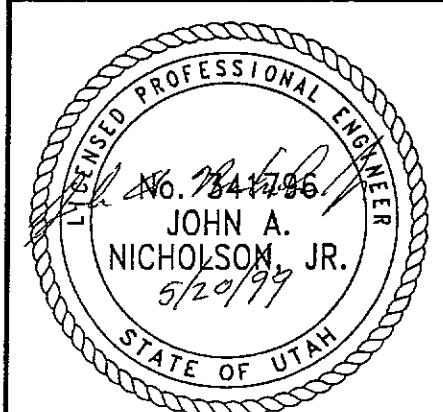


6 ARCHITECTURAL PANEL FINISH
(PANEL FRONT FACE SHOWN)

WASATCH CONSTRUCTORS
 JUN 17 1999
 RELEASED FOR CONSTRUCTION

METRIC

CERTIFIED FOR INTERNAL STABILITY OF RETAINED EARTH™ STRUCTURES ONLY. EXTERNAL STABILITY, INCLUDING BUT NOT LIMITED TO FOUNDATION AND SLOPE STABILITY, IS THE RESPONSIBILITY OF THE OWNER. DESIGN IS BASED ON THE ASSUMPTION THAT THE MATERIAL WITHIN THE RETAINED EARTH™ MASS, METHODS OF CONSTRUCTION, AND QUALITY OF PREFABRICATED MATERIALS CONFORM TO THE MANUFACTURER'S SPECIFICATION.



VSL CORPORATION
 2840 Post Pkwy, Suite 200
 Raleigh, NC 27617 781-4272
 Telephone: (919) 781-4889
 Fax: (919) 781-4889

ATLANTA, GA / DALLAS, TX / HALDEN, NC (CORPORATE OFFICE)
 MIAMI, FL / SAN JOSE, CA / SPRINGFIELD, VA

VSL Corporation (VSL) owns a patent in the United States and other countries for the "Retained Earth" system. This system is a registered trademark of VSL. No other use of the name "Retained Earth" or the VSL logo is permitted without the written consent of VSL.

RETAINED EARTH™ WALLS
 CORRIDOR STANDARD PLAN
 SINGLE STAGE - TYPICAL DETAILS
 UTAH I-15 INTERCHANGE
 SALT LAKE COUNTY, UTAH
 UTAH DEPARTMENT OF TRANSP.

DWG. NO.	CS-312
JOB NO.	239-0007
SHT. NO.	STD-12


H:\RE_EARTH\PROJECT\239-0007\STDS\STD-13
 FINAL PLOT 12-19-97

APPROVED FOR CONSTRUCTION		
NO.	DATE	DESCRIPTION
1	9-30-98	RELEASE FOR CONSTRUCTION
2	5-21-99	ISSUED AS CSP

NO.	DATE	REVISION

VSL CORPORATION
 2810 Plaza Place, Suite 200
 Raleigh, NC 27612
 Telephone: (919) 781-6872
 Fax: (919) 781-6869

ATLANTA, GA / DALLAS, TX / BALTIMORE, MD (CORPORATE OFFICE)
 MIAMI, FL / SAN JOSE, CA / STAMFORD, CT



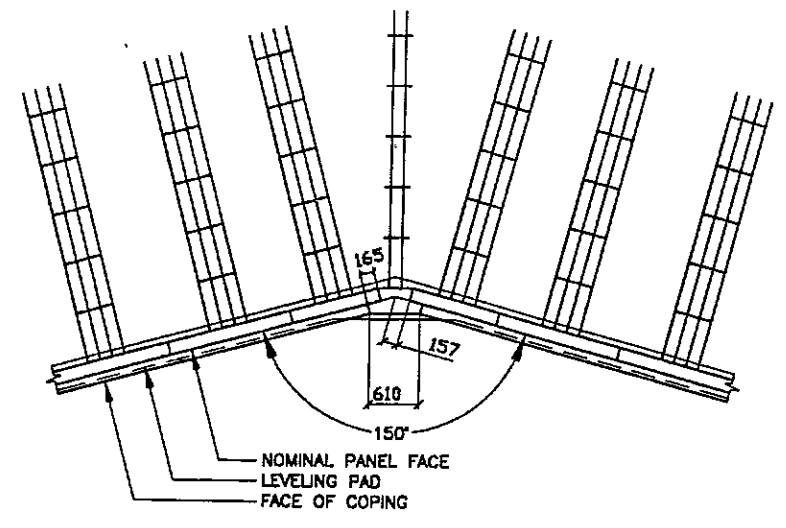
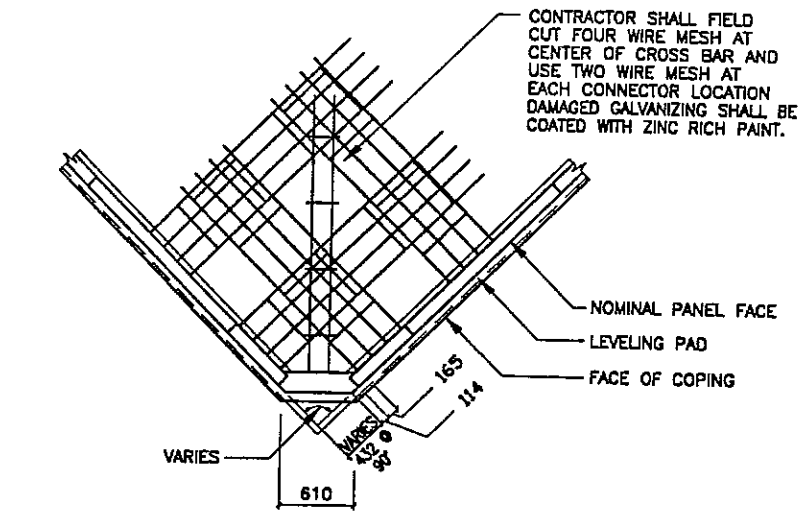
VSL Corporation hereby certifies that the design, calculation, and construction of the structure shown on this sheet, in accordance with the information and data furnished to it, is in accordance with the requirements of the applicable building codes and standards. VSL Corporation is not responsible for any errors or omissions in the design, calculation, or construction of the structure shown on this sheet, in accordance with the information and data furnished to it, which are the responsibility of the user of this sheet.

RETAINED EARTH™ WALLS
 CORRIDOR STANDARD PLAN
 SPECIAL DETAILS
 UTAH I-15 INTERCHANGE
 SALT LAKE COUNTY, UTAH
 UTAH DEPARTMENT OF TRANSP.

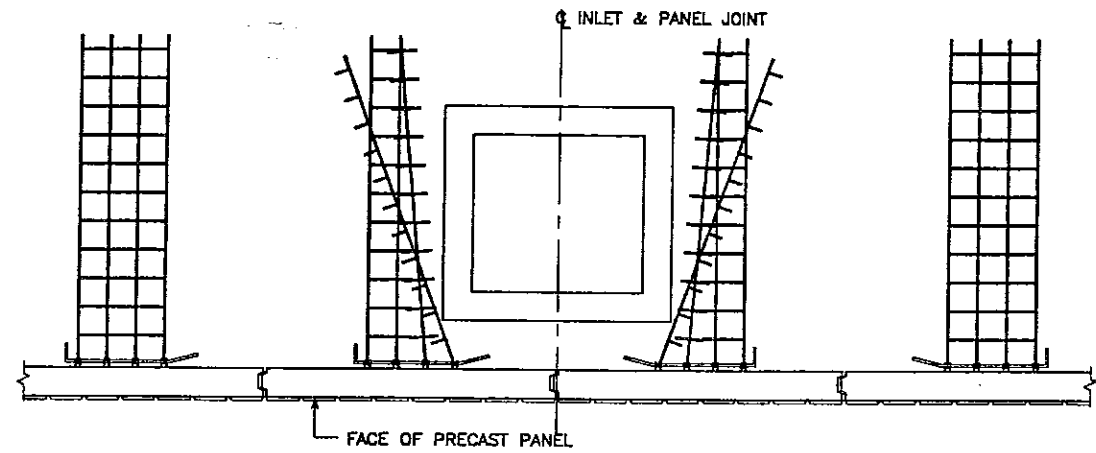
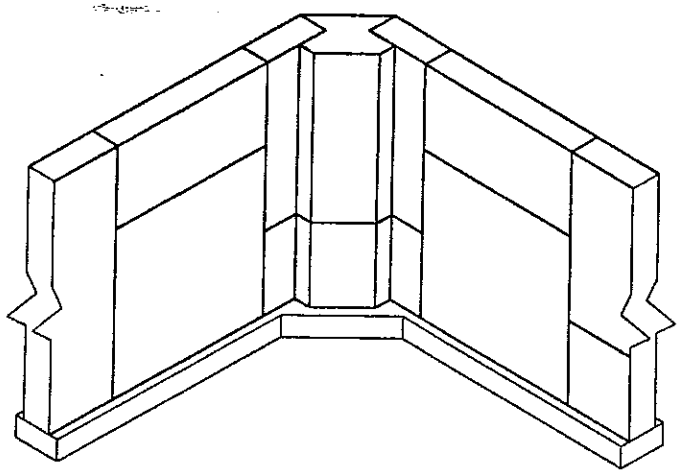
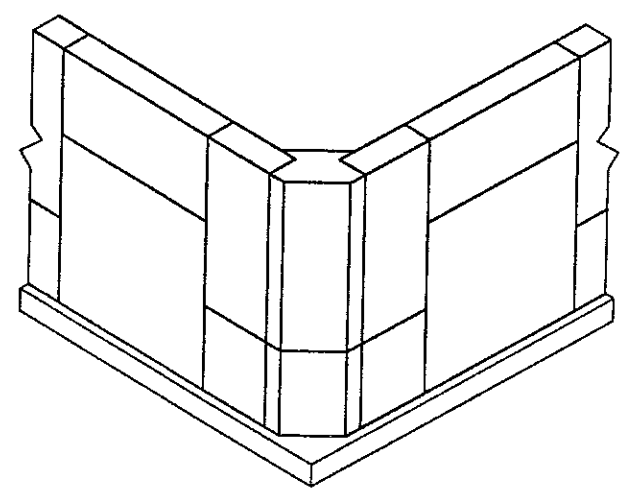
DWG. NO.
 CS-313

JOB NO.
 239-0007

SHT. NO.
 STD-13



INLET/MANHOLE SHALL BE CENTERED ON CENTERLINE OF CLOSEST OBSTRUCTED PANEL JOINT.
 SEE WALL ELEVATIONS FOR LOCATION.
 FIELD CUT & SKEW SOIL REINFORCING TO AVOID INLET. DAMAGED GALVANIZING SHALL BE COATED WITH ZINC RICH PAINT.



101 INLET OBSTRUCTION DETAIL

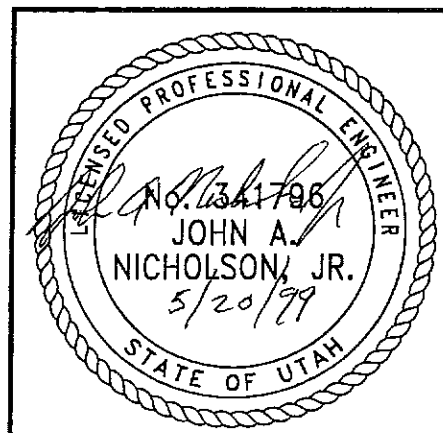
81 OUTSIDE CORNER ELEMENT
 PLAN VIEW / ISOMETRIC

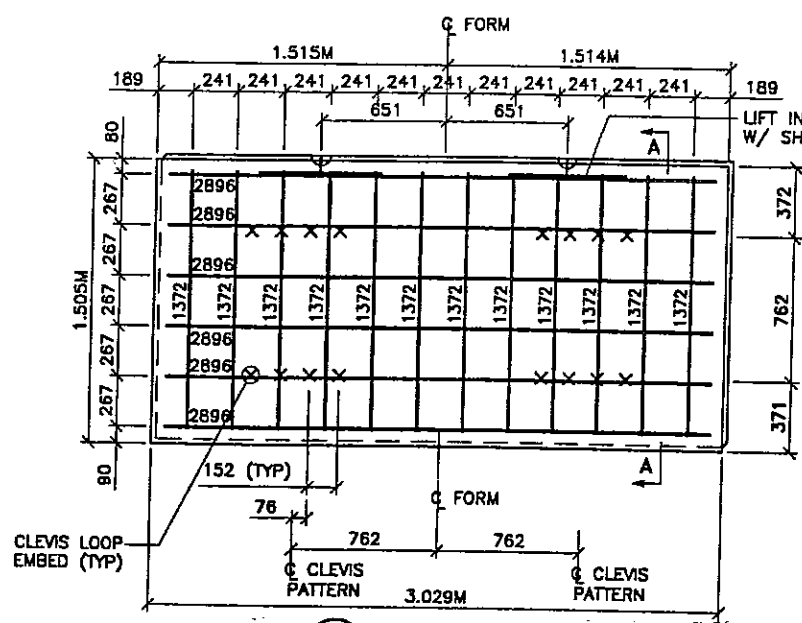
81 INSIDE CORNER ELEMENT
 PLAN VIEW / ISOMETRIC

WASATCH CONSTRUCTORS
 JUN 17 1999
 RELEASED FOR CONSTRUCTION

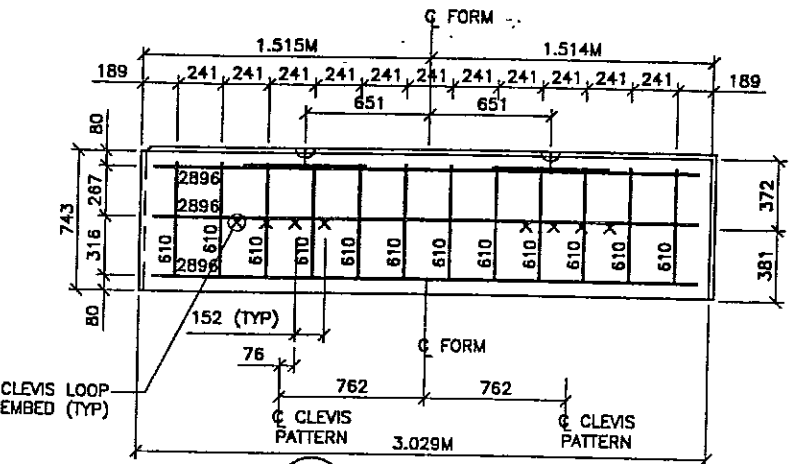
METRIC

CERTIFIED FOR INTERNAL STABILITY OF RETAINED EARTH™ STRUCTURES ONLY. EXTERNAL STABILITY, INCLUDING BUT NOT LIMITED TO FOUNDATION AND SLOPE STABILITY, IS THE RESPONSIBILITY OF THE OWNER. DESIGN IS BASED ON THE ASSUMPTION THAT THE MATERIAL WITHIN THE RETAINED EARTH™ MASS, METHODS OF CONSTRUCTION, AND QUALITY OF PREFABRICATED MATERIALS CONFORM TO THE MANUFACTURER'S SPECIFICATION.

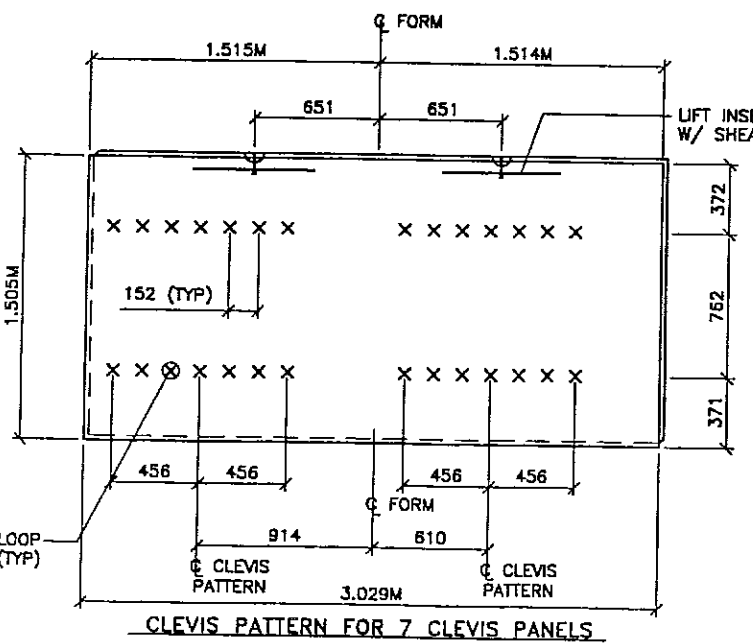




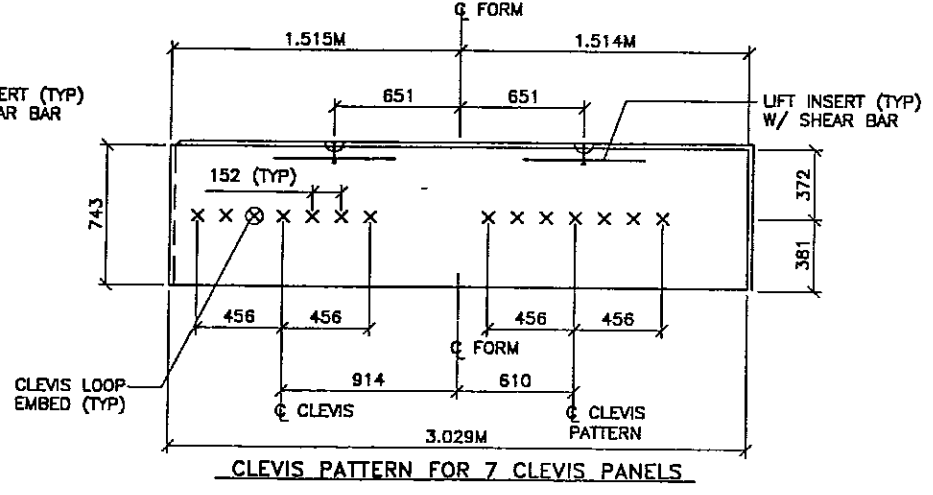
X TYPE X REBAR
(AREA = 4.645 SQ.M)



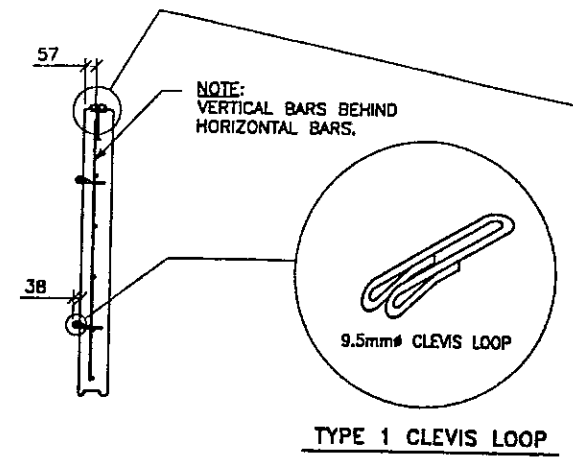
X2 TYPE X2 REBAR
(AREA = 2.323 SQ.M)



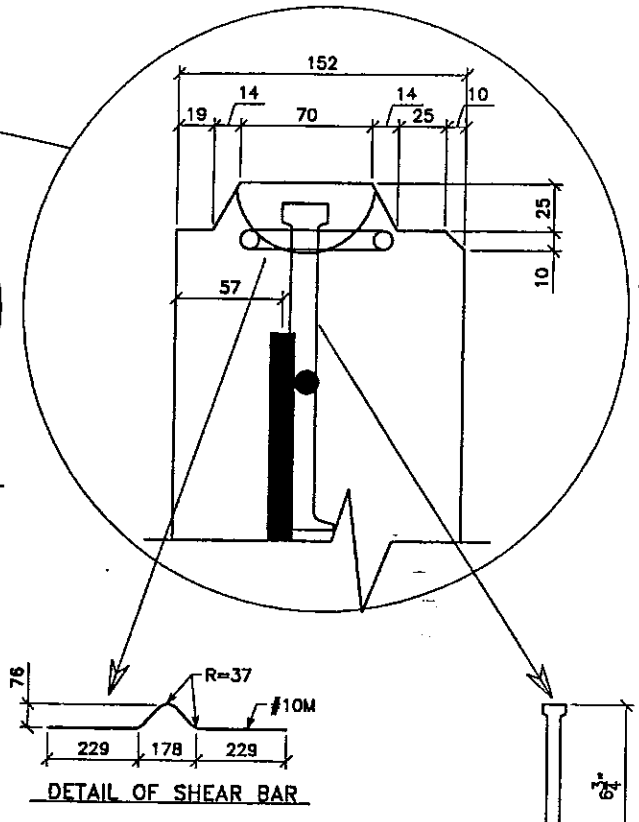
CLEVIS PATTERN FOR 7 CLEVIS PANELS



CLEVIS PATTERN FOR 7 CLEVIS PANELS



TYPE 1 CLEVIS LOOP



DETAIL OF SHEAR BAR

LIFTING INSERT DETAIL
(DAYTON SWIFT LIFT ANCHOR)
(2 TON)

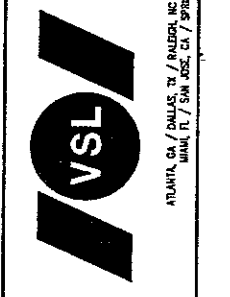
11" FOR PANELS
TALLER THAN
1.524M

APPROVED FOR CONSTRUCTION		
NO.	DATE	DESCRIPTION
9-30-98		RELEASE FOR CONSTRUCTION
5-21-99		ISSUED AS CBP

- PANEL REINFORCEMENT NOTES:
- PANELS ARE SHOWN BACK FACE.
 - HORIZONTAL REINFORCEMENT SHALL HAVE 50 mm MINIMUM COVER TO THE BACK FACE.
 - ALL REINFORCEMENT SHALL HAVE 50 mm MINIMUM COVER TO THE SIDES.
 - ALL REINFORCING BARS ARE #13 METRIC. LABELS ON EACH BAR INDICATE LENGTH. EXAMPLE: 2859 IS A #13 BAR 2859 mm LONG.
 - PANEL REINFORCEMENT BARS SHALL BE DEFORMED BILLET STEEL BARS FOR CONCRETE REINFORCEMENT CONFORMING TO THE SPECIFICATIONS OF ASTM DESIGNATION A615, GRADE 60.
 - ALL REINFORCING STEEL TO BE GALVANIZED IN ACCORDANCE WITH ASTM 767 CLASS 1.
 - CONCRETE PANELS TO HAVE 28 DAY COMPRESSIVE STRENGTH OF 25,200 KPa.
 - EQUIVALENT WELDED WIRE FABRIC MAY BE USED.
 - ALL PANELS TO USE 9.5mm# CLEVIS LOOPS.
 - VSL RETAINED EARTH™ IS PROTECTED UNDER PATENT 4,725,170.
 - LIFT INSERTS ARE 6 3/4" LONG IN ALL PANELS LESS THAN 1.524M TALL. PANELS TALLER THAN 1.524M SHALL HAVE 11" LONG LIFT ANCHORS.

DES.	MM	12-19-97	DRN.	DDO	12-19-97	CHK.	MM	12-19-97	NO.	DATE	REVISION	BY	CHK

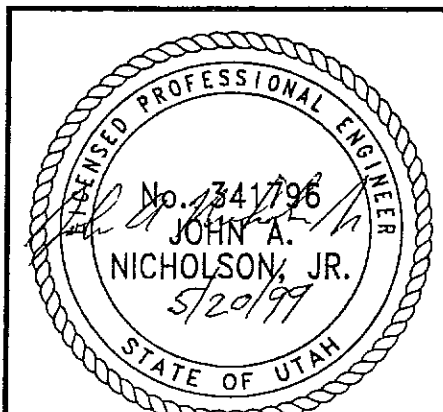
VSL CORPORATION
2500 Plaza Place, Suite 200
Raleigh, NC 27602
Phone: (919) 791-5272
Fax: (919) 791-6883



VSL Retained Earth™ is a registered trademark of VSL Corporation. All rights reserved. No part of this document may be reproduced, stored in a retrieval system, or transmitted in any form or by any means, electronic, mechanical, photocopying, recording, or by any information storage and retrieval system, without the prior written permission of VSL Corporation. Any other use is strictly prohibited. VSL CORPORATION, 2500 PLAZA PLACE, RALEIGH, NC 27602, USA. TEL: (919) 791-5272. FAX: (919) 791-6883.

RETAINED EARTH™ WALLS
CORRIDOR STANDARD PLAN
HEAVY PANEL REINFORCEMENT 1.524M x 3.048M
UTAH I-15 INTERCHANGE
SALT LAKE COUNTY, UTAH
UTAH DEPARTMENT OF TRANSP.

WASATCH CONSTRUCTORS
JUN 17 1999
RELEASED FOR CONSTRUCTION



METRIC

CERTIFIED FOR INTERNAL STABILITY OF RETAINED EARTH™ STRUCTURES ONLY. EXTERNAL STABILITY, INCLUDING BUT NOT LIMITED TO FOUNDATION AND SLOPE STABILITY, IS THE RESPONSIBILITY OF THE OWNER. DESIGN IS BASED ON THE ASSUMPTION THAT THE MATERIAL WITHIN THE RETAINED EARTH™ MASS, METHODS OF CONSTRUCTION, AND QUALITY OF PREFABRICATED MATERIALS CONFORM TO THE MANUFACTURER'S SPECIFICATION.

OWG. NO.	CS-314
JOB NO.	239-0007
SHT NO.	STD-14