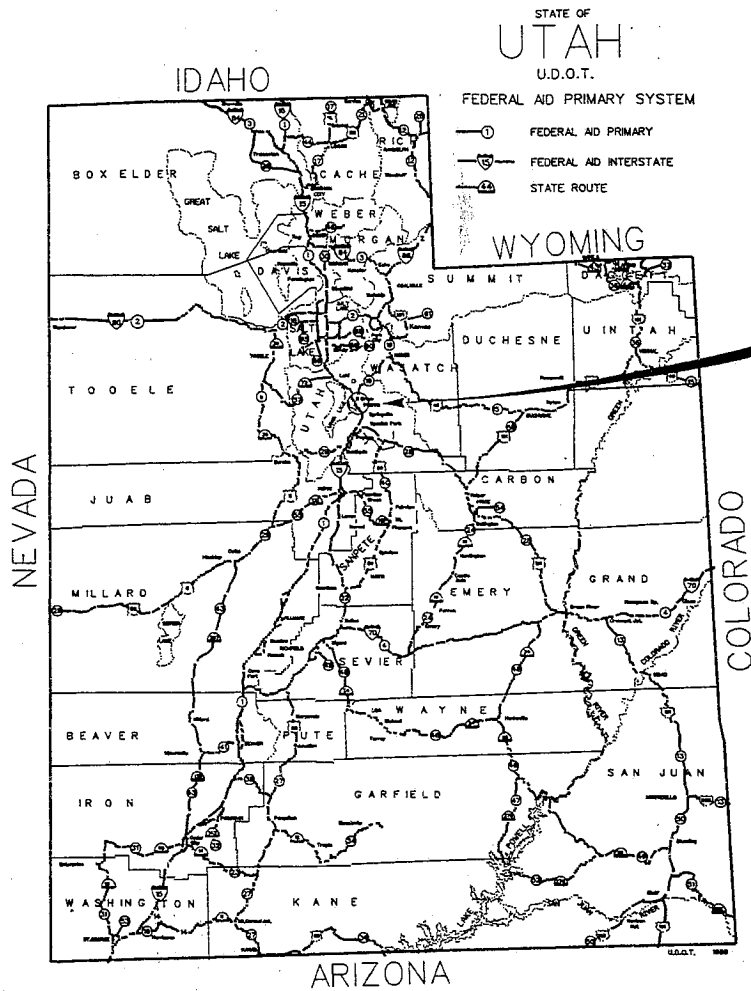


Jim Golden  
227-8027

METRIC

SHEET NO.  
1

# UTAH DEPARTMENT OF TRANSPORTATION PLANS OF PROPOSED STATE ROAD

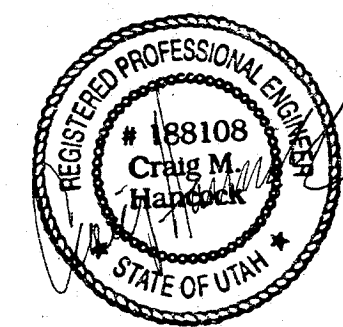
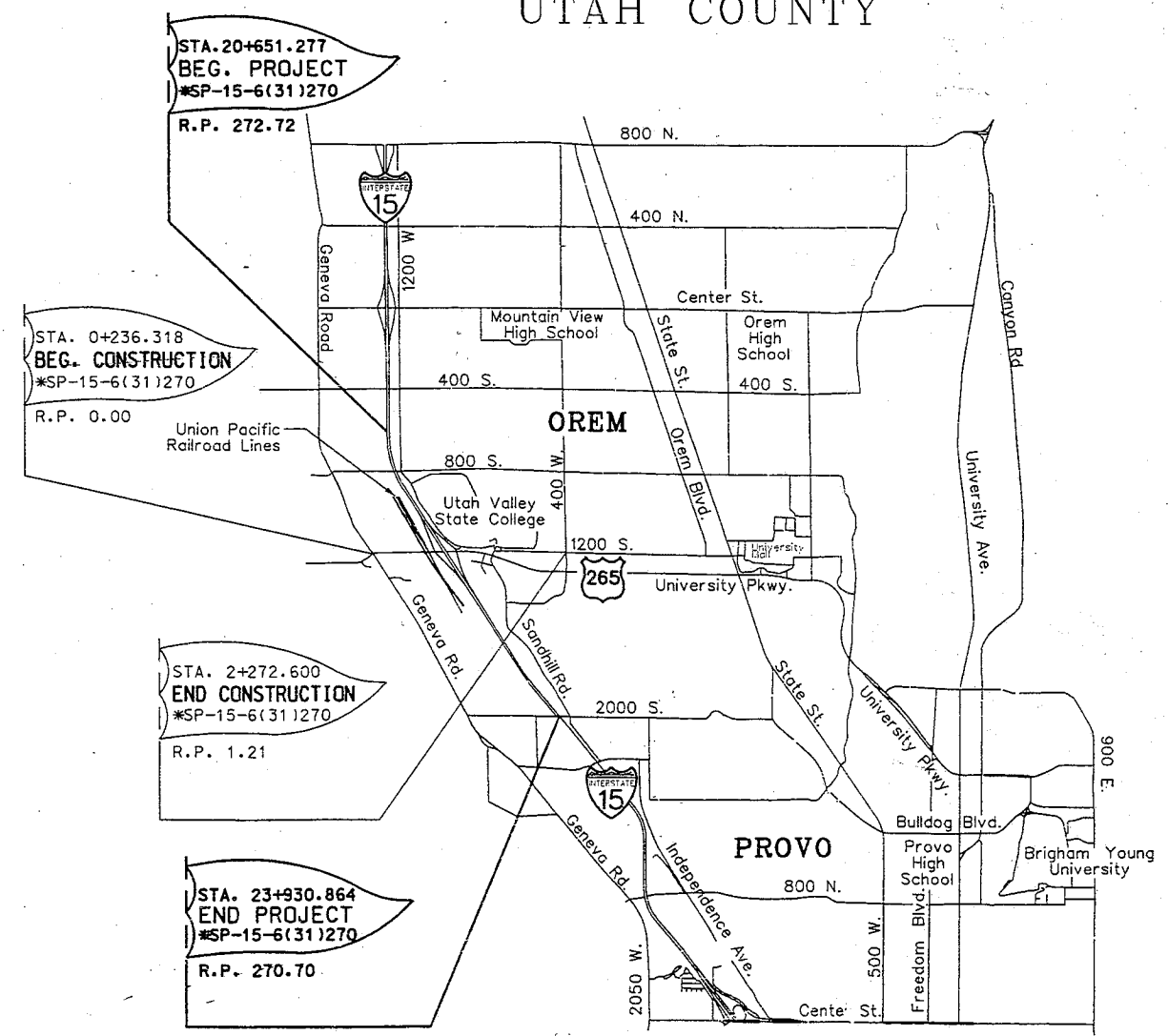


\*SP-15-6(31)270

\*SP-15-6(31)270

## UNIVERSITY PARKWAY INTERCHANGE 3.279 KILOMETERS

GRADING, DRAINAGE, STRUCTURES, SURFACING, SIGNING,  
LIGHTING, SIGNAL, WETLANDS MITIGATION & LANDSCAPING  
UTAH COUNTY



UTAH DEPARTMENT OF TRANSPORTATION  
 RECOMMENDED FOR APPROVAL July 18, 2000  
*Philip L. Huff*  
 PROJECT MANAGER  
 APPROVAL 9/3/00 2000  
*by Marshall Kelly*  
 REGION DIRECTOR

# CROSS REFERENCE INDEX SHEET

STA. 20+651.277  
BEG. PROJECT  
#SP-15-6(31)270

R.P. 272.72

TOPOGRAPHY & UTILITY SHEET UT-9  
PLAN SHEET RD-9  
DRAINAGE SHEET D-8  
SIGNING & STRIPING SS-9

TOPOGRAPHY & UTILITY SHEET UT-10  
PLAN SHEET RP-10  
DRAINAGE SHEET D-9  
SIGNING & STRIPING SHEET SS-10

TOPOGRAPHY & UTILITY SHEET UT-11  
PLAN SHEET RP-11  
DRAINAGE SHEET D-10  
SIGNING & STRIPING SHEET SS-11

TOPOGRAPHY & UTILITY SHEET UT-12  
PLAN SHEET RD-12  
PROFILE SHEETS RP-12 & RP-14  
DRAINAGE SHEETS D-11 & D-12  
SIGNING & STRIPING SHEET SS-12

STRUCTURE F-674

TOPOGRAPHY & UTILITY SHEETS UT-3 & UT-4  
PLAN SHEETS RD-3 & RD-4  
PROFILE SHEETS RP-3, RP-9, RP-11, RP-13, & RP-15  
DRAINAGE SHEET D-3  
SIGNING & STRIPING SHEET SS-3 & SS-4

TOPOGRAPHY & UTILITY SHEET UT-5  
PLAN SHEET RD-5  
PROFILE SHEET RP-4  
SIGNING & STRIPING SHEET SS-5

TOPOGRAPHY & UTILITY SHEET UT-6  
PLAN SHEET RD-6  
PROFILE SHEET RP-5  
DRAINAGE SHEET D-5  
SIGNING & STRIPING SHEET SS-6

TOPOGRAPHY & UTILITY SHEET UT-7  
PLAN SHEET RD-7  
PROFILE SHEET RP-6  
DRAINAGE SHEET D-6  
SIGNING & STRIPING SHEET SS-7

STA. 2+272.600  
END CONSTRUCTION  
#SP-15-6(31)270

R.P. 1.21

TOPOGRAPHY & UTILITY SHEET UT-8  
PLAN SHEET RD-8  
PROFILE SHEET RP-7  
DRAINAGE SHEET D-7  
SIGNING & STRIPING SHEET SS-8

MSE RETAINING WALL R-367-B

STA. 0+236.318  
BEG. CONSTRUCTION  
#SP-15-6(31)270

R.P. 0.00

RAILROAD PLAN & PROFILE SHEET PP-3

RAILROAD PLAN & PROFILE SHEET PP-2

RAILROAD PLAN & PROFILE SHEET PP-1

TOPOGRAPHY & UTILITY SHEET UT-1  
PLAN SHEET RD-1  
PROFILE SHEET RP-1  
DRAINAGE SHEET D-1  
SIGNING & STRIPING SHEET SS-1

TOPOGRAPHY & UTILITY SHEET UT-2  
PLAN SHEET RD-2  
PROFILE SHEET RP-2  
DRAINAGE SHEET D-2  
SIGNING & STRIPING SHEET SS-2  
STRUCTURE F-673

RAILROAD PLAN SHEET PP-4  
MSE RETAINING WALL R-364-A

TOPOGRAPHY & UTILITY SHEET UT-13  
PLAN SHEET RD-13  
PROFILE SHEETS RP-8, RP-10  
DRAINAGE SHEETS D-13 & D-14  
SIGNING & STRIPING SHEET SS-13

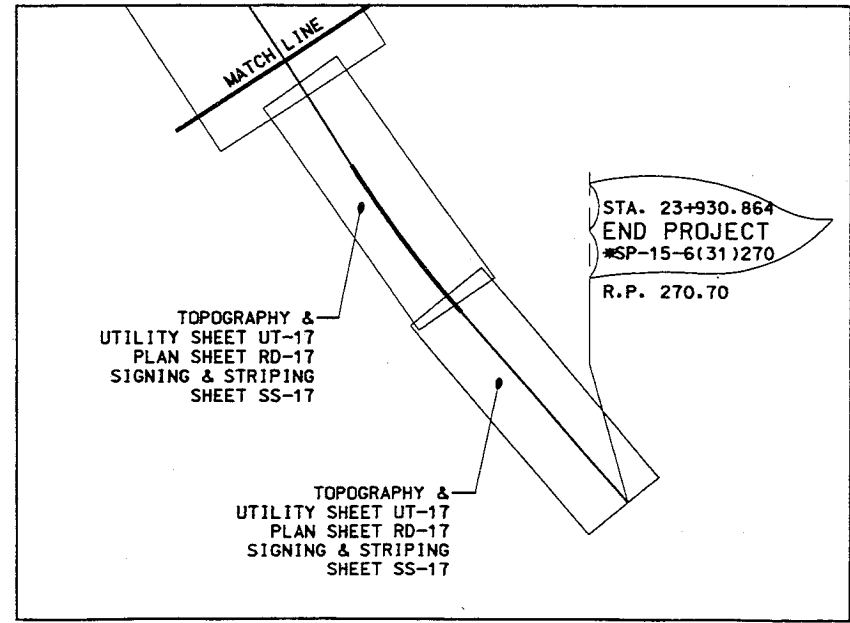
TOPOGRAPHY & UTILITY SHEET UT-14  
PLAN SHEET RD-14  
DRAINAGE SHEET D-15  
SIGNING & STRIPING SHEET SS-14

TOPOGRAPHY & UTILITY SHEET UT-15  
PLAN SHEET RD-15  
DRAINAGE SHEET D-16  
SIGNING & STRIPING SHEET SS-15

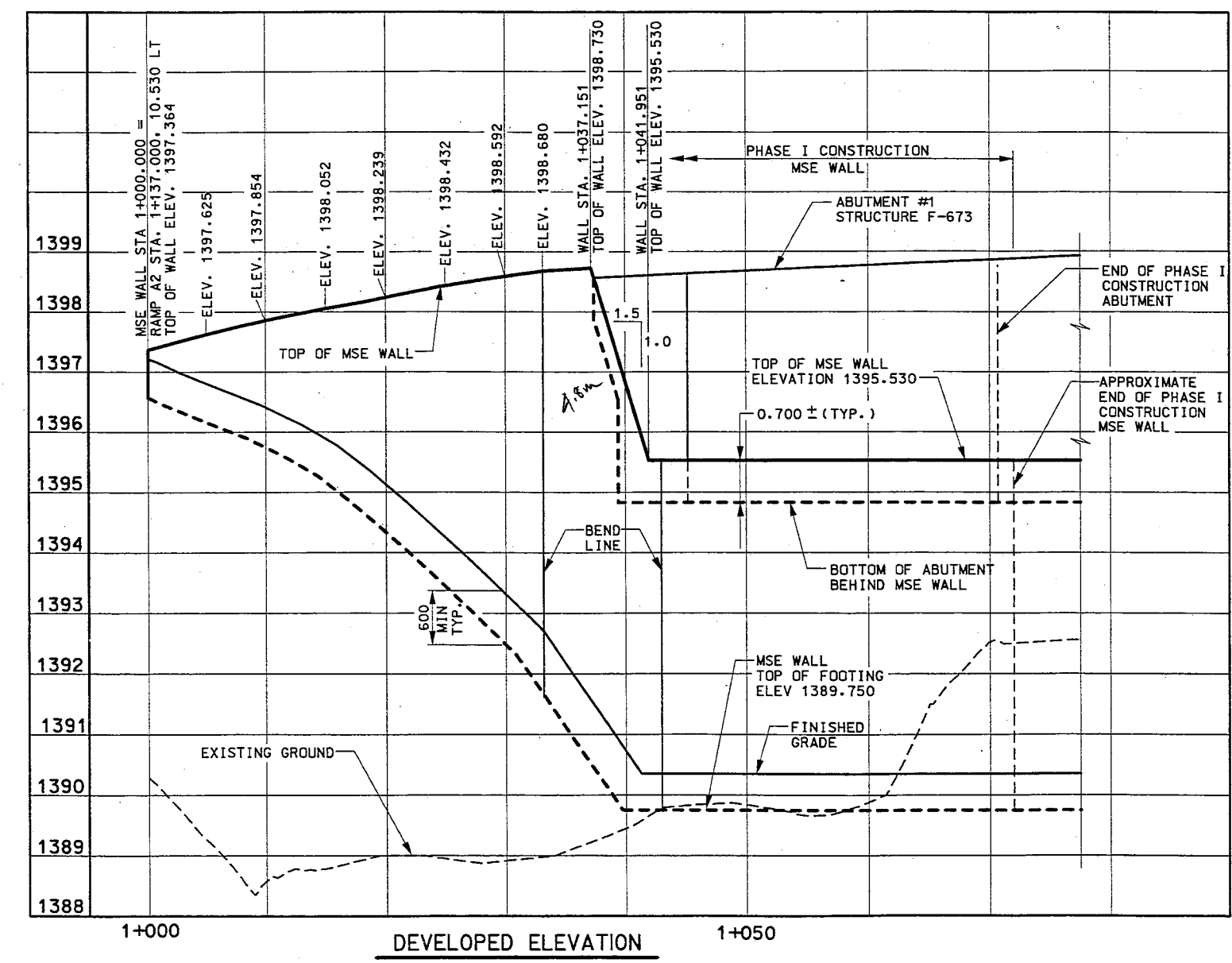
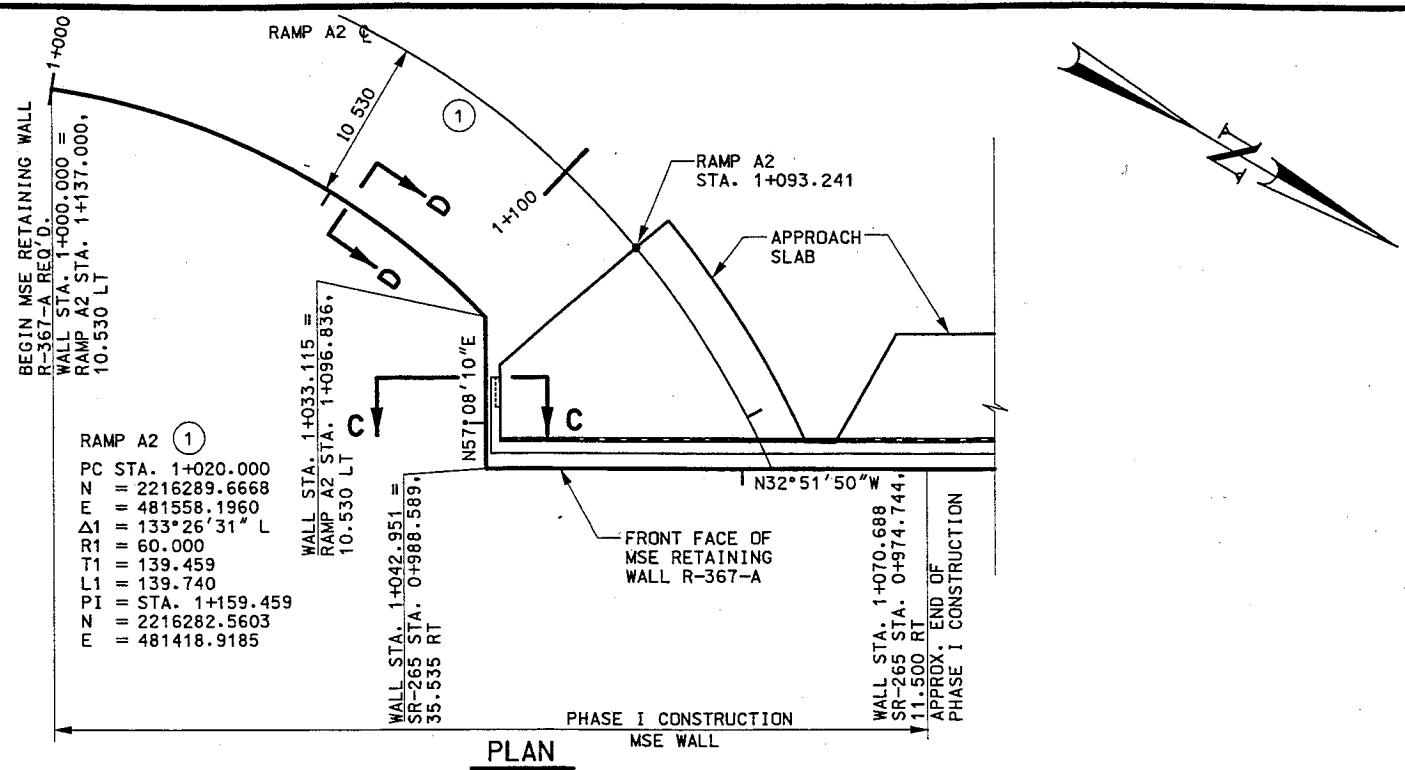
TOPOGRAPHY & UTILITY SHEET UT-16  
PLAN SHEET RD-16  
DRAINAGE SHEET D-17  
SIGNING & STRIPING SHEET SS-16

MATCH LINE  
SEE INSET A

## INSET A



UTAH DEPARTMENT OF TRANSPORTATION REGION THREE -- OREM, UTAH ROADWAY DESIGN		DESIGN CMH 3/00	CHECK CMH 3/00	REVISION
UNIVERSITY PARKWAY INTERCHANGE	CROSS REFERENCE SHEET	DRAWN D/HW 3/00	CHECK CMH 3/00	DATE
PROJECT NUMBER #SP-15-6(31)270		APPROVED DATE 7/00	QUANT.	BY
UTAH COUNTY		DESIGN REV. BY	MAPS PARCELS REQUEST	REMARKS
SHEET NO. 1-D		ORIGINAL SUBMISSION FOR AUTHORIZATION	DATE	DATE



**GENERAL NOTES**

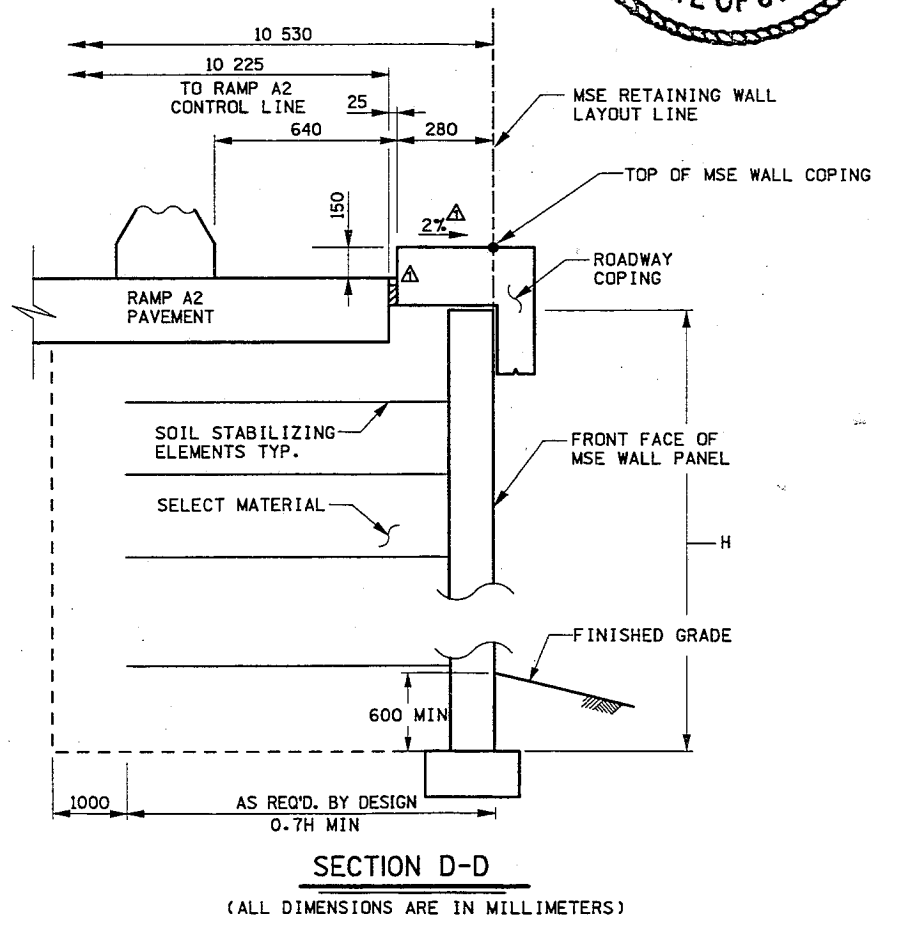
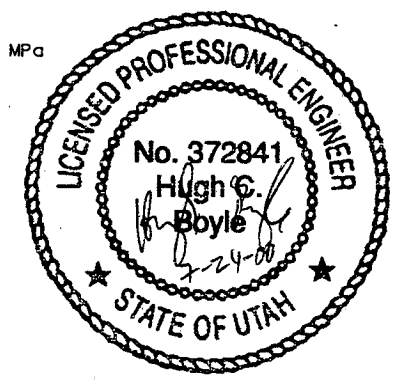
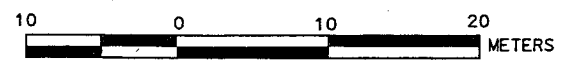
- ALL REINFORCING STEEL SHALL BE COATED DEFORMED BILLET-STEEL BARS CONFORMING TO AASHTO M 284 OR M 111 AND M 31M GRADE 400 RESPECTIVELY.
- CHAMFER ALL EXPOSED CONCRETE CORNERS 20 mm EXCEPT WHERE NOTED OTHERWISE.
- PROVIDE 50 mm CONCRETE COVER TO REINFORCING STEEL EXCEPT WHERE NOTED OTHERWISE.
- ALL CAST-IN-PLACE CONCRETE SHALL BE CLASS AA (AE) EXCEPT WHERE SPECIFIED OTHERWISE.
- ALL STATIONS AND ELEVATIONS SHOWN ARE IN METERS.
- THE MSE WALL-IN FRONT OF THE ABUTMENT MUST BE CONSTRUCTED IN TWO PHASES.
- REFER TO STRUCTURE F-673 DRAWINGS FOR ABUTMENT DIMENSIONS AND PILE SPACING.
- REFER TO ROADWAY PLAN SET SHEETS LI-1 TO LI-8 FOR LOCATIONS OF LIGHTS ON THE MSE WALLS, LIGHTING PLANS AND LIGHTING DETAILS.
- REFER TO ROADWAY PLAN SET SHEETS TC-1 TO TC-9 FOR TRAFFIC PHASING PLANS AND DETAILS.
- REFER TO THE MSE WALL SPECIFICATIONS FOR CONSTRUCTION SEQUENCE INFORMATION RELATING TO PLACING OF THE PILES IN THE MSE WALL ZONE.
- PROVIDE TEMPORARY SHORING AS REQUIRED TO MAINTAIN EXISTING AND NEW STRUCTURES DURING CONSTRUCTION. COST OF SHORING IS INCIDENTAL TO COST OF MSE WALL.

**DESIGN DATA**

REINFORCING STEEL:  $f_s = 160 \text{ MPa}$ ;  $FY = 400 \text{ MPa}$   
 CAST-IN-PLACE CONCRETE:  $f'_c = 25 \text{ MPa}$

**NOTES:**

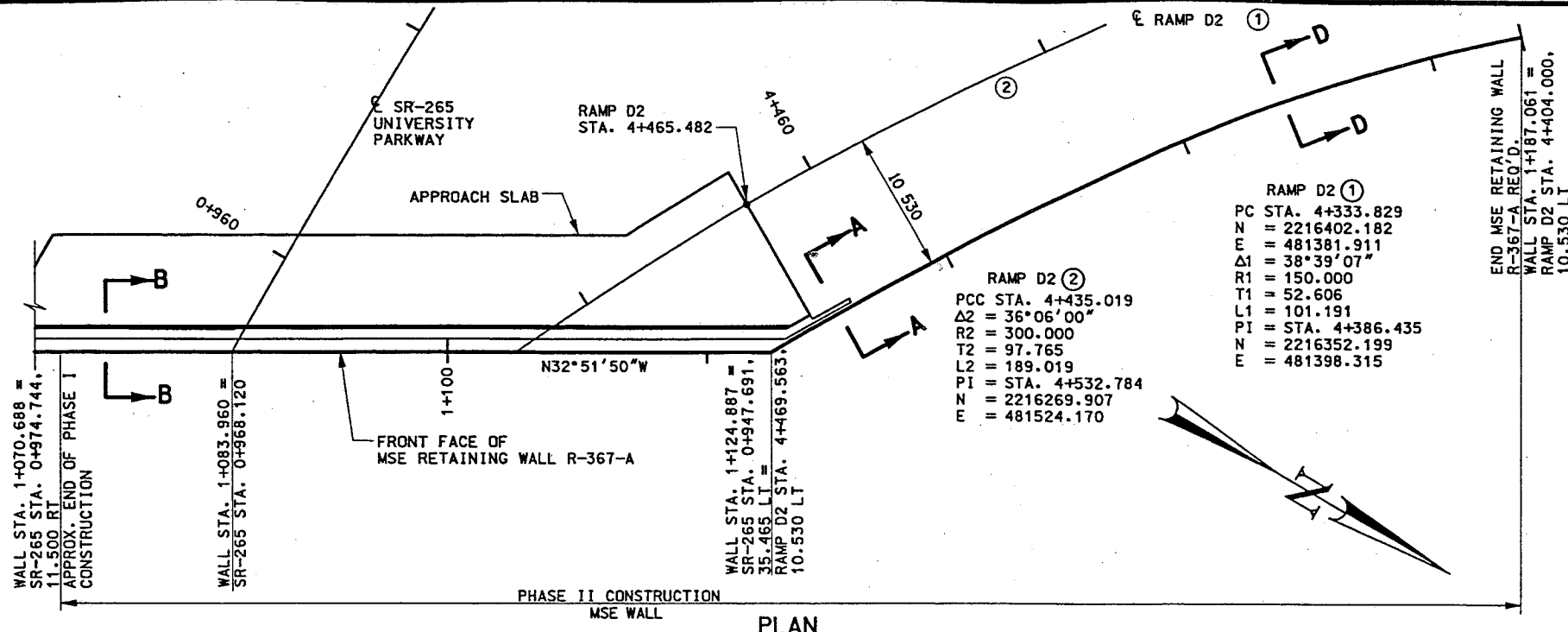
- FOR ADDITIONAL SECTIONS AND COPING DETAILS SEE SHEET 3.



QUANTITIES			
ITEM	ESTIM	UNIT	AS CONST
MSE WALL (EST QTY 1130 m <sup>2</sup> )	1	LUMP	

UTAH DEPARTMENT OF TRANSPORTATION REGION 3, OREM, UTAH STRUCTURES DIVISION	DESIGN HCB 4/00 DRAWN SFS 4/00 CHECK HCB 4/00 QUANT. HCB 6/00 CHECK SFS 6/00	DESIGN DATE 7/15/00 DESIGN ENGINEER [Signature] APPROVED DATE 7/15/00 APPROVED [Signature]	PROJECT NUMBER *SP-15-6(3)270
MSE RETAINING WALL R-367-A UNIVERSITY PARKWAY SITUATION & LAYOUT	DESIGN SFS 4/00 CHECK SFS 4/00	DESIGN DATE 7/15/00 DESIGN ENGINEER [Signature] APPROVED DATE 7/15/00 APPROVED [Signature]	UTAH COUNTY R-367-A DWG. NO.
UTAH DEPARTMENT OF TRANSPORTATION REGION 3, OREM, UTAH STRUCTURES DIVISION PROJECT NUMBER *SP-15-6(3)270			SHEET 1 OF 3

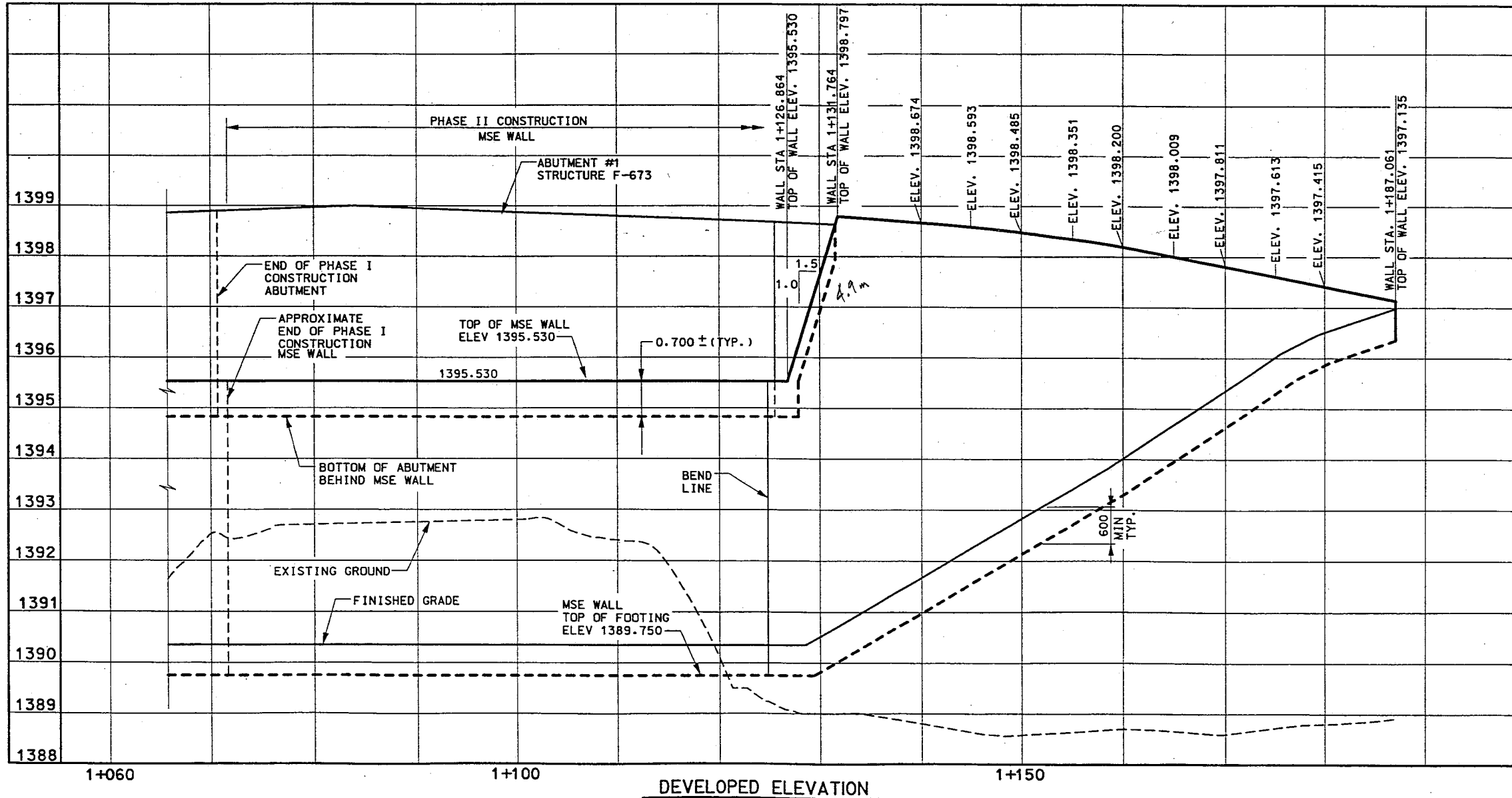
11:26:56 AM 07/26/00 ph:\proj\24344\_SPU\_L\_w265\sheet\1a\1853\_wall.dwg



NOTES:

1. SEE SHEET 1 FOR GENERAL NOTES.
2. SEE SHEETS 1 AND 3 FOR SECTIONS AND COPING DETAILS.

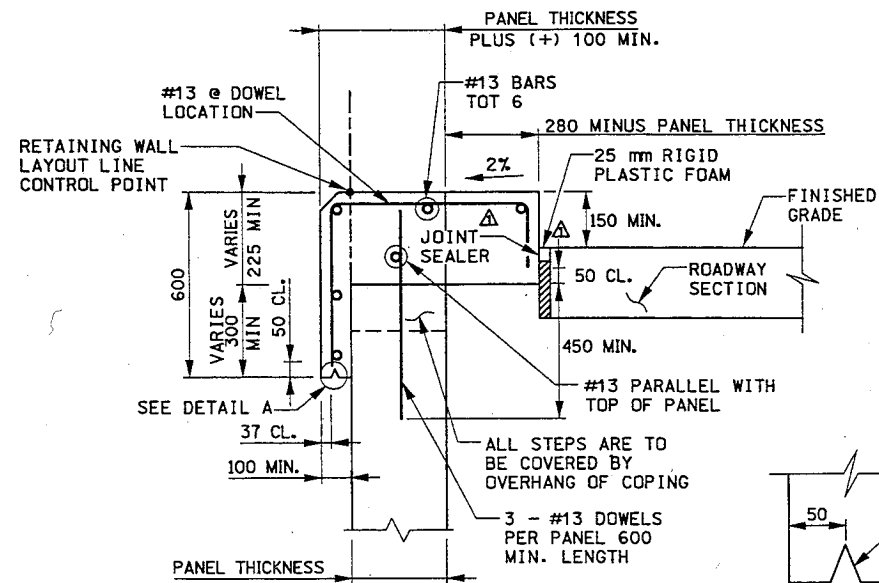
10 0 10 20 METERS



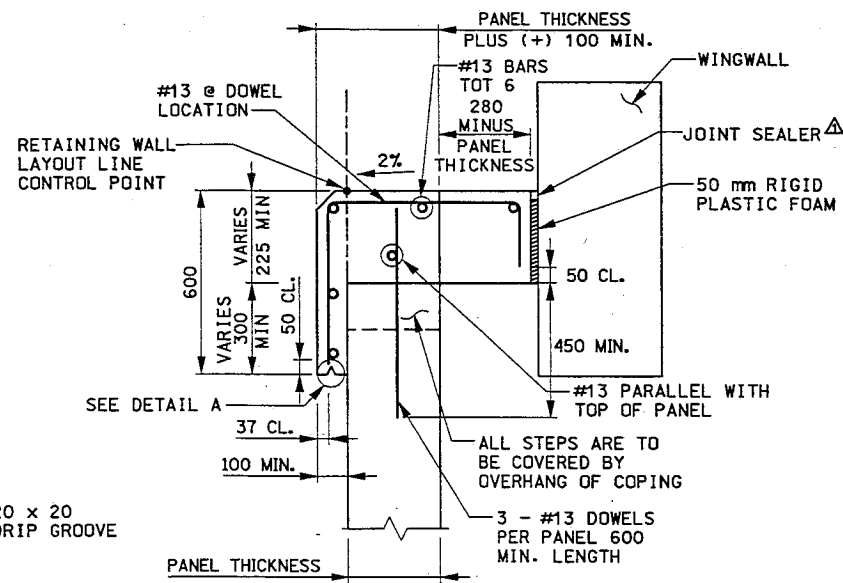
REVISIONS		REMARKS	
NO.	DATE	BY	

UTAH DEPARTMENT OF TRANSPORTATION		Baker	
REGION 3, OREM, UTAH		STRUCTURES DIVISION	
APPROVAL REGIONAL	DATE	DESIGN ENGINEER	CHECK HCB
APPROVED	DATE	CHECK SFS	CHECK HCB
PROJECT NUMBER	#SP-15-6(3)270		
UTAH COUNTY			
R-367-A			
DWG. NO.			
SHT. 2 OF 3			

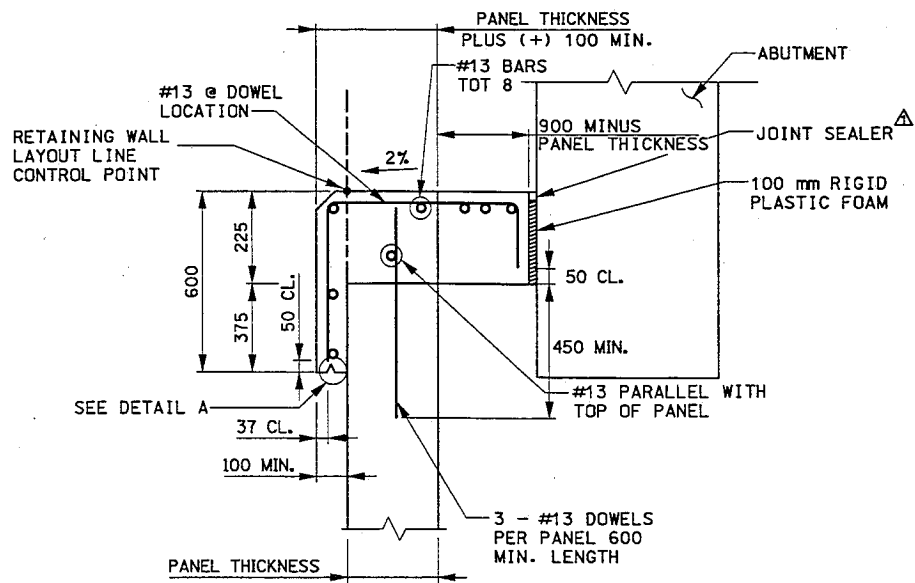
P:\proj\2014\SPUL\_r205\sheetfiles\1853\_wall\_e2.dgn  
 07/10/08  
 1811481.dwg



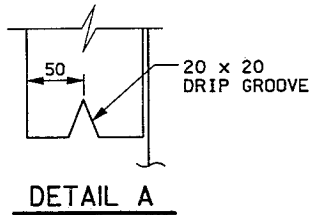
**ROADWAY COPING DETAIL**  
(ALL DIMENSIONS ARE IN MILLIMETERS)



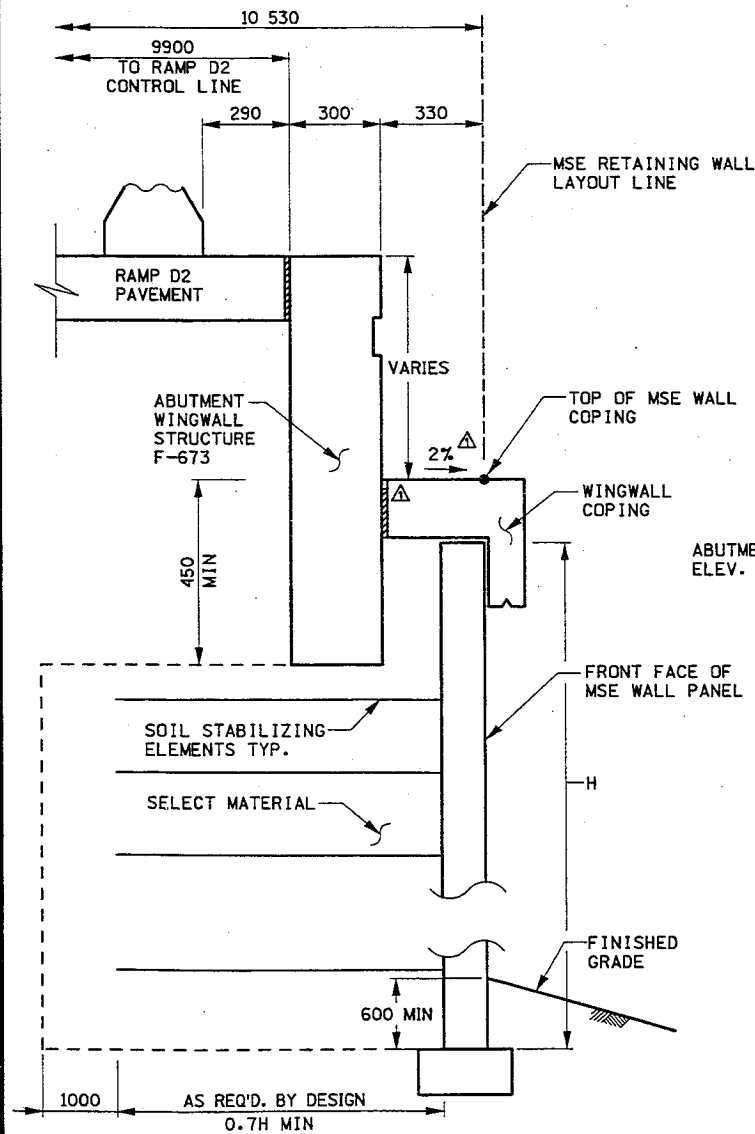
**WINGWALL COPING DETAIL**  
(ALL DIMENSIONS ARE IN MILLIMETERS)



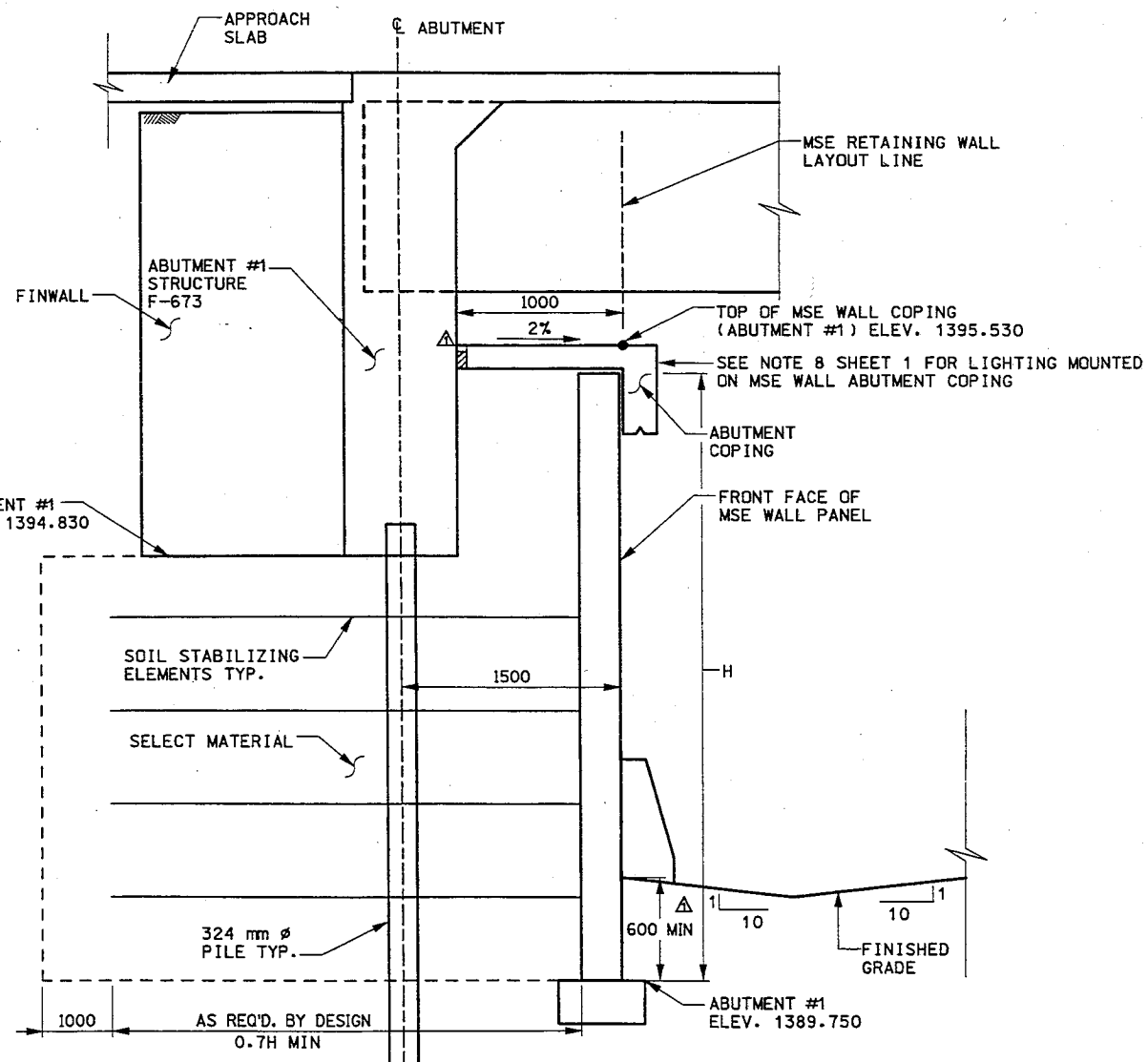
**ABUTMENT COPING DETAIL**  
(ALL DIMENSIONS ARE IN MILLIMETERS)



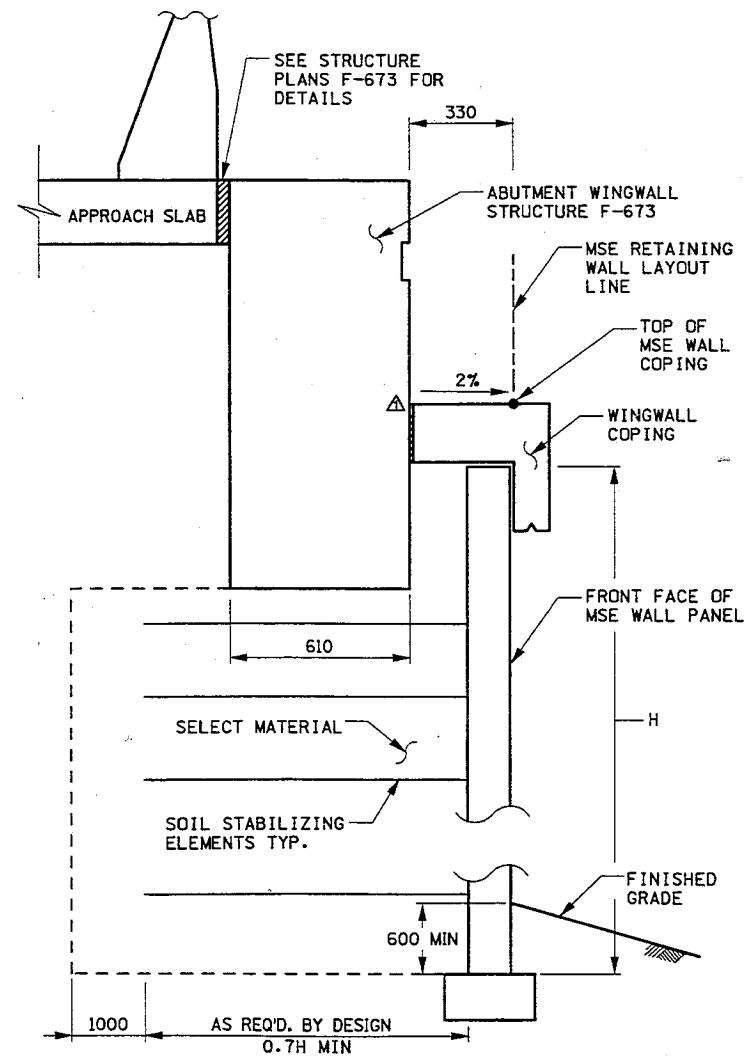
**DETAIL A**



**SECTION A-A**  
(ALL DIMENSIONS ARE IN MILLIMETERS)



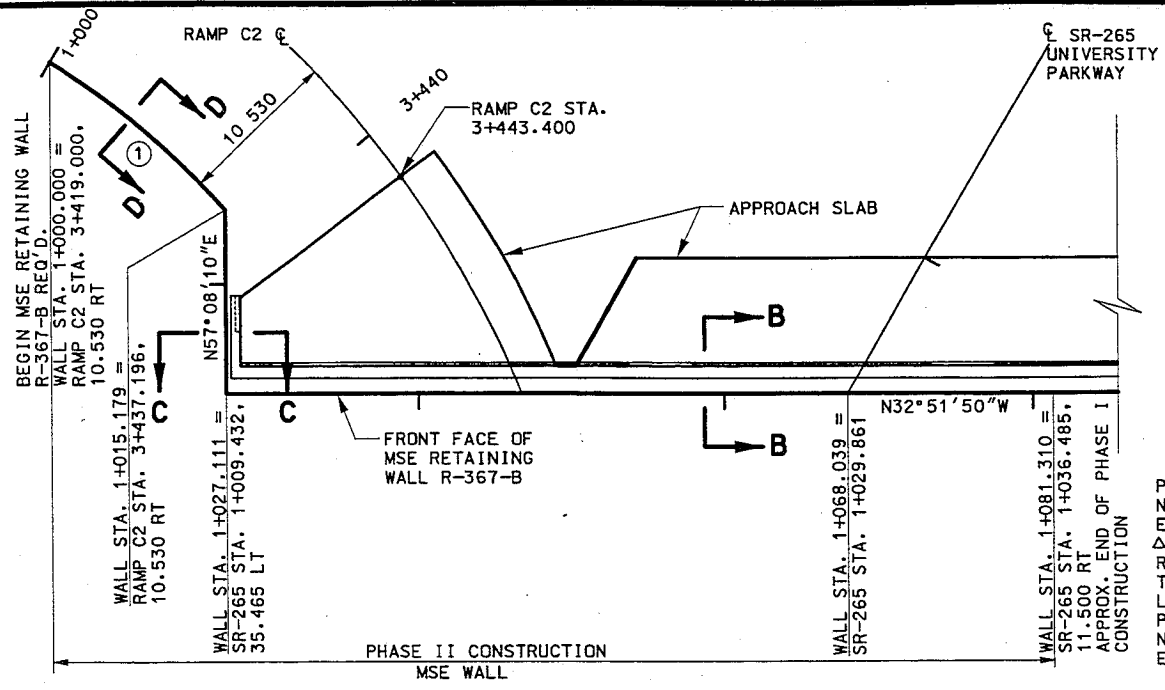
**SECTION B-B**  
(ALL DIMENSIONS ARE IN MILLIMETERS)



**SECTION C-C**  
(ALL DIMENSIONS ARE IN MILLIMETERS)

p:\proj\24344\SPUL\_r265\sheet\1893\_wall\_e3.dgn  
 07/25/08  
 12:07:28 PM

UTAH DEPARTMENT OF TRANSPORTATION	REGION 3, OREM, UTAH	DESIGN HCB 4/00	CHECK SFS 4/00	NO.	REVISIONS
STRUCTURES DIVISION		DRAWN SFS 4/00	CHECK HCB 4/00	DATE	BY
MSE RETAINING WALL R-367-A	UNIVERSITY PARKWAY	APPROVAL DATE 7-21-08	QUANT.		
SITUATION & LAYOUT		APPROVED DATE 7-25-08			
		PROJECT NUMBER			
		#SP-15-6(3)270			
		UTAH COUNTY			
		R-367-A			
		DWG. NO.			
SHT.	3	OF	3		



RAMP C2 (1)

PC STA.	3+369.459
PZ	2216384.7800
PI	481541.9747
ΔI	132°45'55"
R1	63.500
T1	145.226
L1	147.142
P1	STA. 3+514.684
PZ	2216283.3272
PI	481645.8874

**GENERAL NOTES**

1. ALL REINFORCING STEEL SHALL BE COATED DEFORMED BILLET- STEEL BARS CONFORMING TO AASHTO M 284 OR M 111 AND M 31M GRADE 400 RESPECTIVELY.
2. CHAMFER ALL EXPOSED CONCRETE CORNERS 20 mm EXCEPT WHERE NOTED OTHERWISE.
3. PROVIDE 50 mm CONCRETE COVER TO REINFORCING STEEL EXCEPT WHERE NOTED OTHERWISE.
4. ALL CAST-IN-PLACE CONCRETE SHALL BE CLASS AA (AE) EXCEPT WHERE SPECIFIED OTHERWISE.
5. ALL STATIONS AND ELEVATIONS SHOWN ARE IN METERS.
6. THE MSE WALL IN FRONT OF THE ABUTMENT MUST BE CONSTRUCTED IN TWO PHASES.
7. REFER TO STRUCTURE F-673 DRAWINGS FOR ABUTMENT DIMENSIONS AND PILE SPACING.
8. REFER TO ROADWAY PLAN SET SHEETS LI-1 TO LI-8 FOR LOCATIONS OF LIGHTS ON THE MSE WALLS. LIGHTING PLANS AND LIGHTING DETAILS.
9. REFER TO ROADWAY PLAN SET SHEETS TC-1 TO TC-9 FOR TRAFFIC PHASING PLANS AND DETAILS.
10. REFER TO ROADWAY PLAN SET SHEET SI-8 FOR OVERHEAD SIGNAL CIRCUIT DETAILS.
11. REFER TO THE MSE WALL SPECIFICATIONS FOR CONSTRUCTION SEQUENCE INFORMATION RELATING TO PLACING OF THE PILES IN THE MSE WALL ZONE.
12. PROVIDE TEMPORARY SHORING AS REQUIRED TO MAINTAIN EXISTING AND NEW STRUCTURES DURING CONSTRUCTION. COST OF SHORING IS INCIDENTAL TO COST OF MSE WALL.

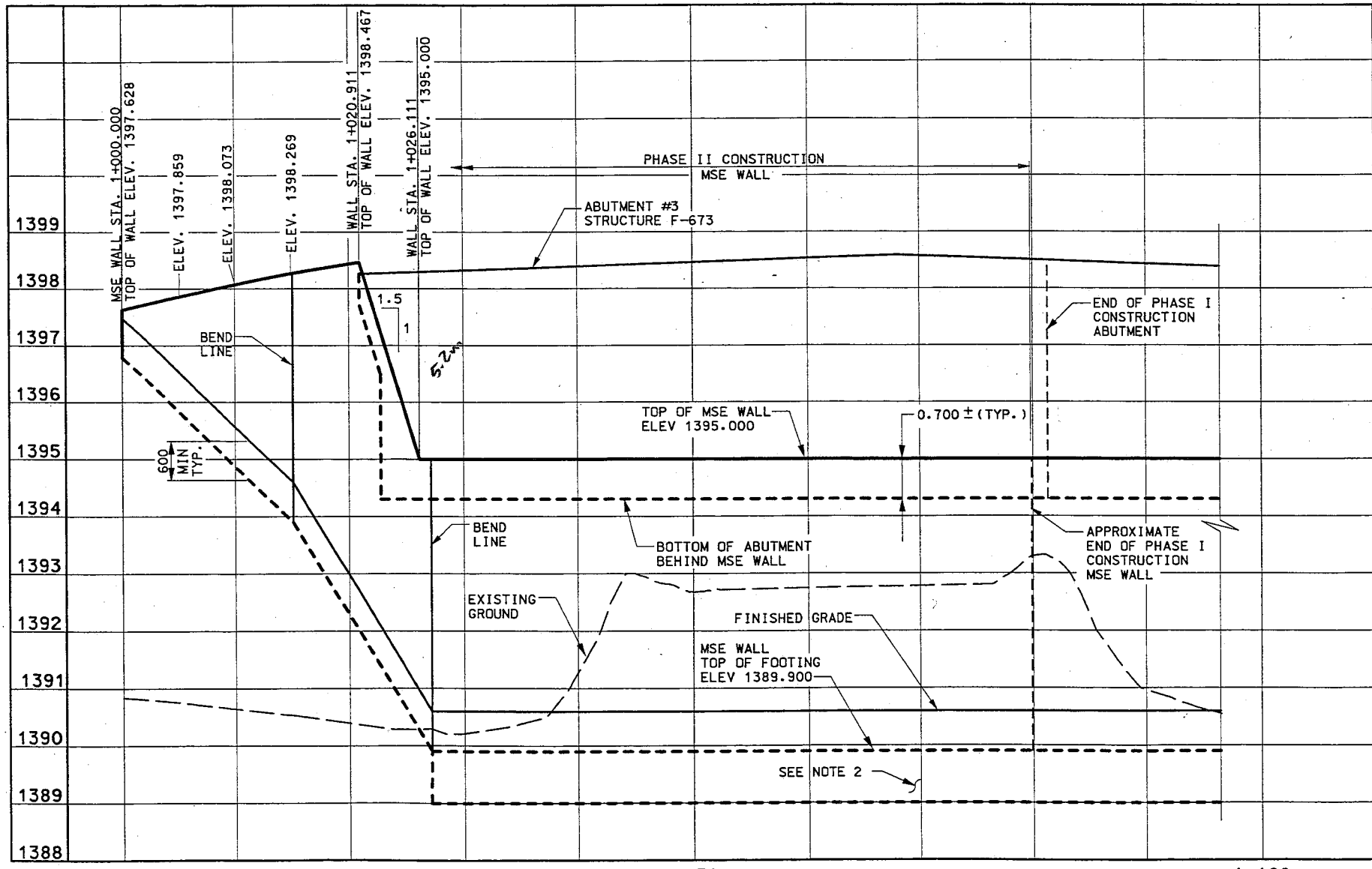
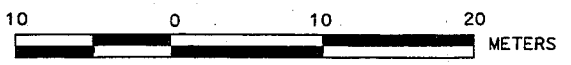
**PLAN**

**DESIGN DATA**

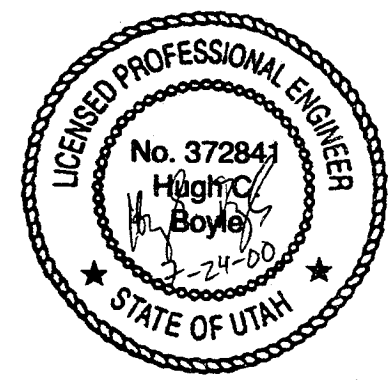
REINFORCING STEEL:  $f_s = 160 \text{ MPa}$ ;  $FY = 400 \text{ MPa}$   
 CAST-IN-PLACE CONCRETE:  $f'_c = 25 \text{ MPa}$

**NOTES:**

1. FOR SECTIONS AND COPING DETAILS SEE SHEETS 2 & 3.
2. REMOVE LOOSE SILTY SAND TO ELEVATION 1389.000 AND REPLACE WITH GRANULAR BORROW IN ZONE SHOWN ON PLANS.



**DEVELOPED ELEVATION**



QUANTITIES			
ITEM	ESTIM	UNIT	AS CONST
MSE WALL (EST QTY 840 m <sup>2</sup> )	1	LUMP	

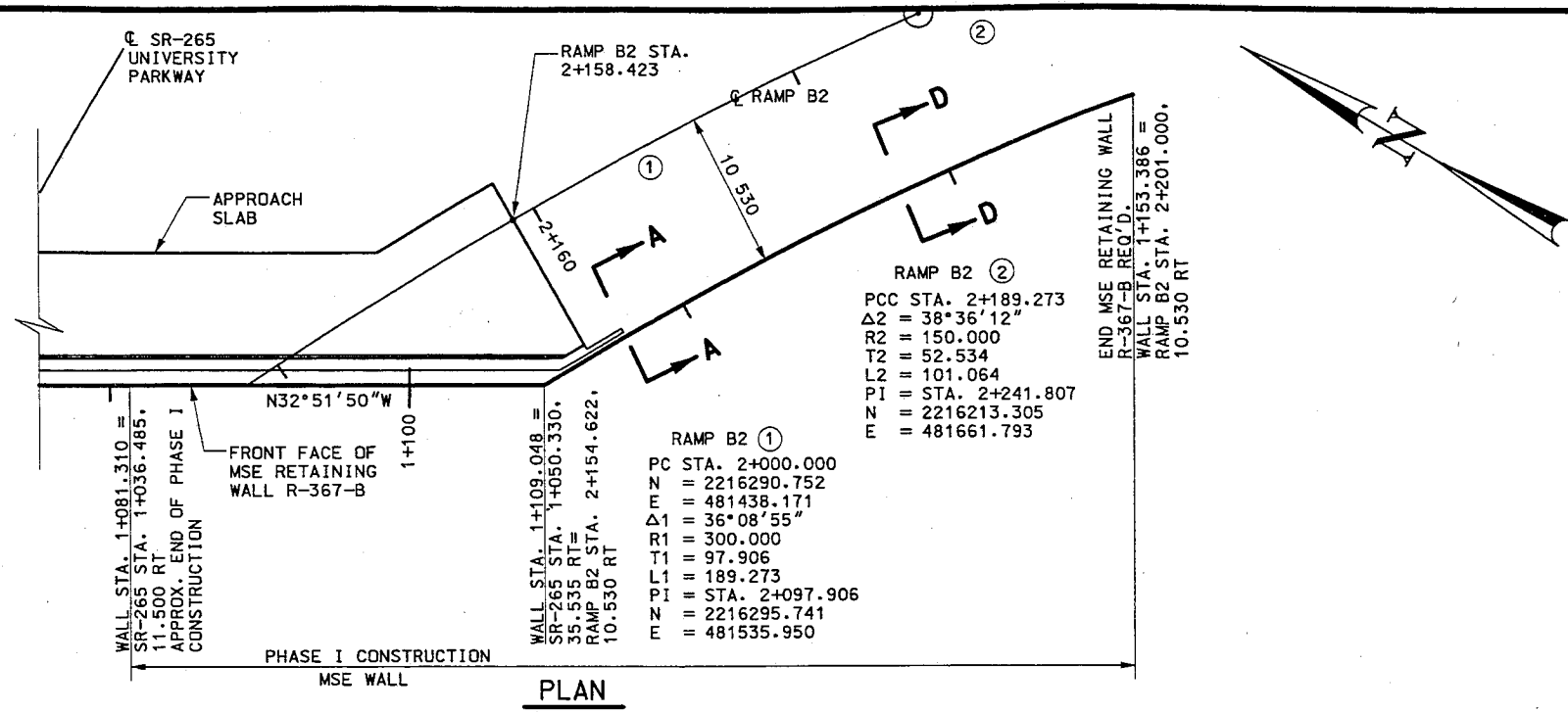
UTAH COUNTY	R-367-B
DWG. NO.	
SHT.	1 OF 3

NO.	DATE	BY	REVISIONS	REMARKS

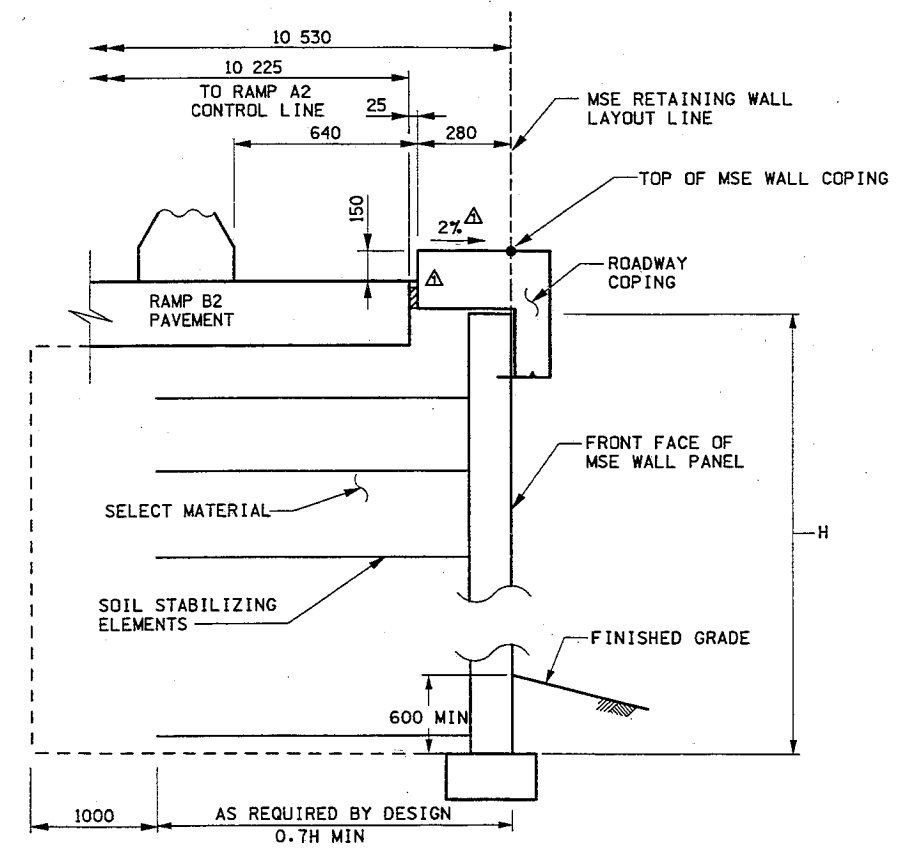
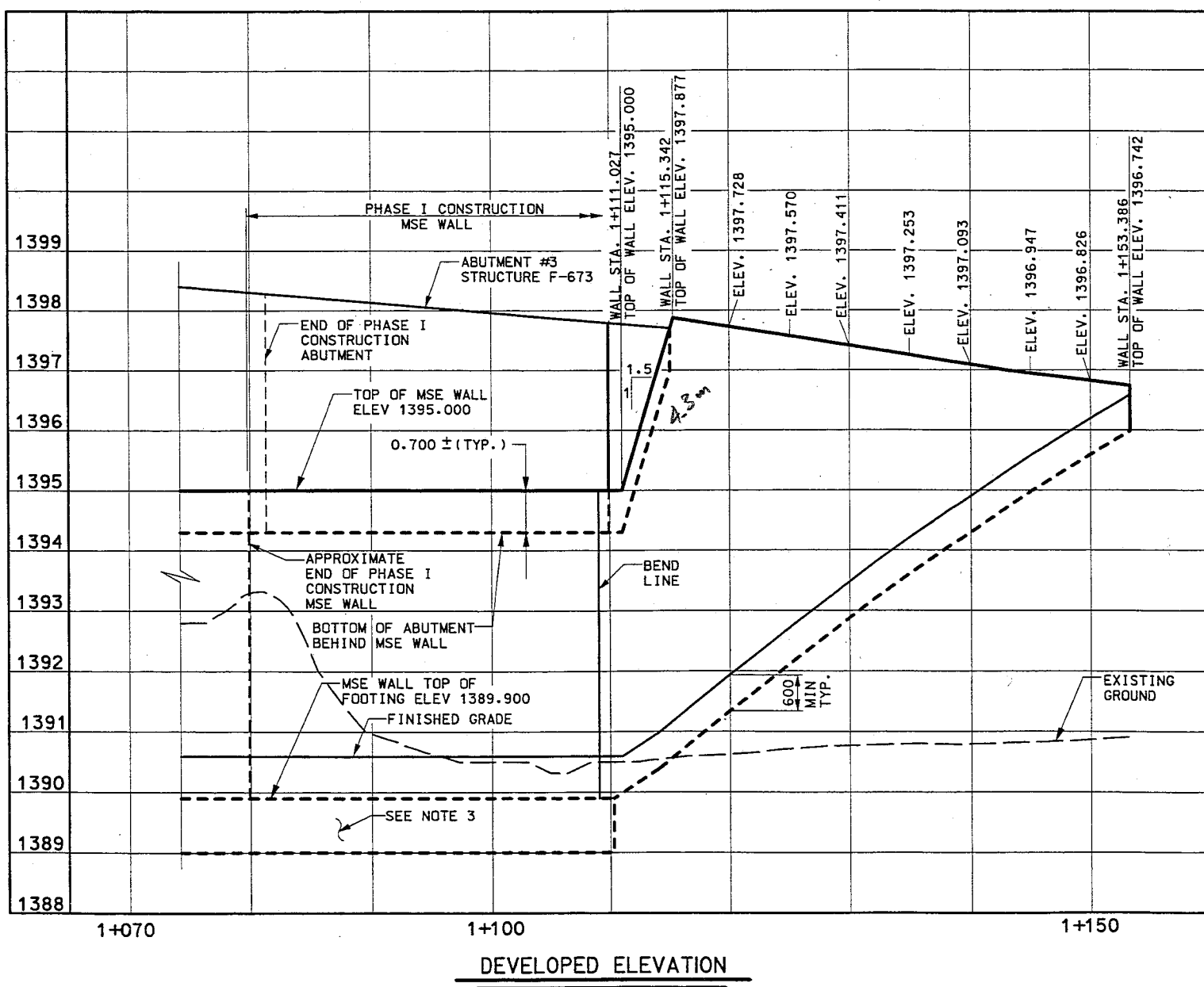
UTAH DEPARTMENT OF TRANSPORTATION	Baker
REGION 3, OREM, UTAH	
STRUCTURES DIVISION	
DESIGN HCB 4/00	CHECK SFS 4/00
DRAWN SFS 4/00	CHECK HCB 4/00
DATE 3-25-00	DATE 3-25-00
APPROVED 3-25-00	DATE 3-25-00
APPROVED 3-25-00	DATE 3-25-00

MSE RETAINING WALL R-367-B
UNIVERSITY PARKWAY
SITUATION & LAYOUT
PROJECT # SP-15-6(3)270

11:53:17 AM  
07/25/00  
p:\pro\24344\_SPHJL\_w265\sheet1.dwg

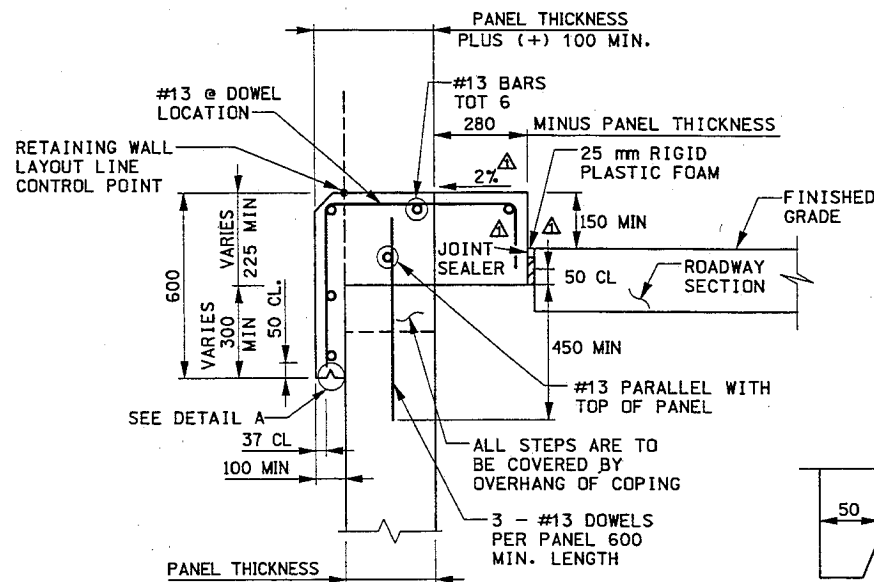


- NOTES:
1. SEE SHEET 1 FOR GENERAL NOTES.
  2. SEE SHEET 3 FOR ADDITIONAL SECTIONS.
  3. REMOVE LOOSE SILTY SAND TO ELEVATION 1389.000 AND REPLACE WITH GRANULAR BORROW IN ZONE SHOWN ON PLANS.

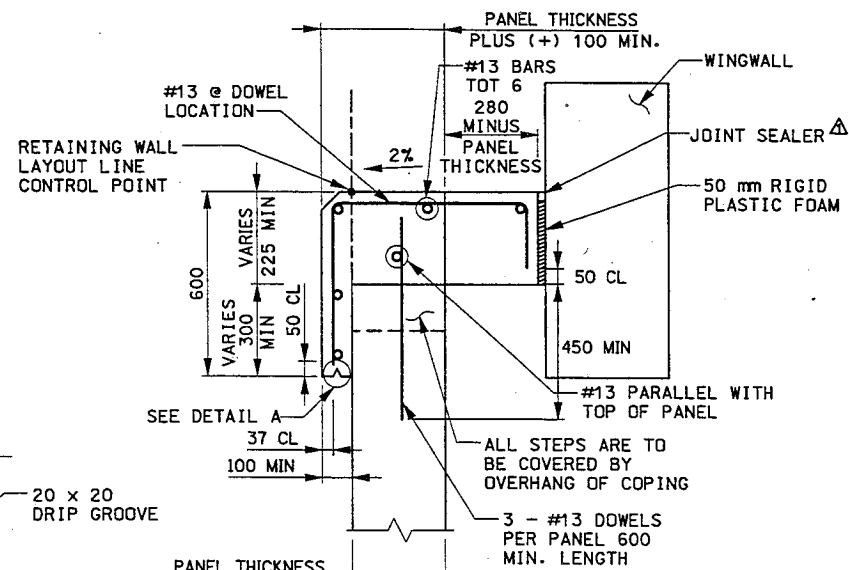


UTAH DEPARTMENT OF TRANSPORTATION		REGION 3, OREM, UTAH		STRUCTURES DIVISION		Baker	
MSE RETAINING WALL R-367-B		UNIVERSITY PARKWAY		SITUATION & LAYOUT		PROJECT NUMBER	
UTAH COUNTY		R-367-B		DWG. NO.		SHT. 2 OF 3	
DESIGN	HCB	4/00	CHECK	SFS	4/00	DESIGN	HCB
DRAWN	SFS	4/00	CHECK	HCB	4/00	DRAWN	SFS
QUANT.	HCB	4/00	CHECK	SFS	4/00	QUANT.	HCB
DATE	7-15-00	DATE	7-15-00	DATE	7-15-00	DATE	7-15-00
APPROVED	[Signature]	APPROVED	[Signature]	APPROVED	[Signature]	APPROVED	[Signature]
REVISIONS	REVISIONS						
NO.	REMARKS						
BY	DATE						
AW	7/25/00						
2% ON COPING AND JOINT SEALER							

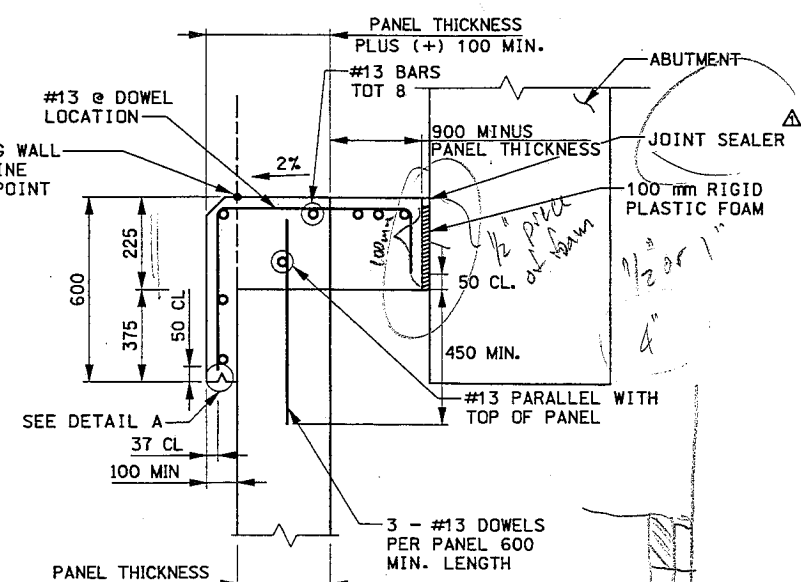
p:\pvc\24344\_SPOOL\_#265\sheet1.dwg\1663\_wall\_b2.dgn 8/7/25/08 11:53:35 AM



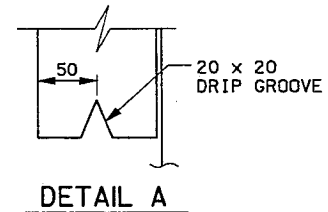
**ROADWAY COPING DETAIL**  
 (ALL DIMENSIONS ARE IN MILLIMETERS)



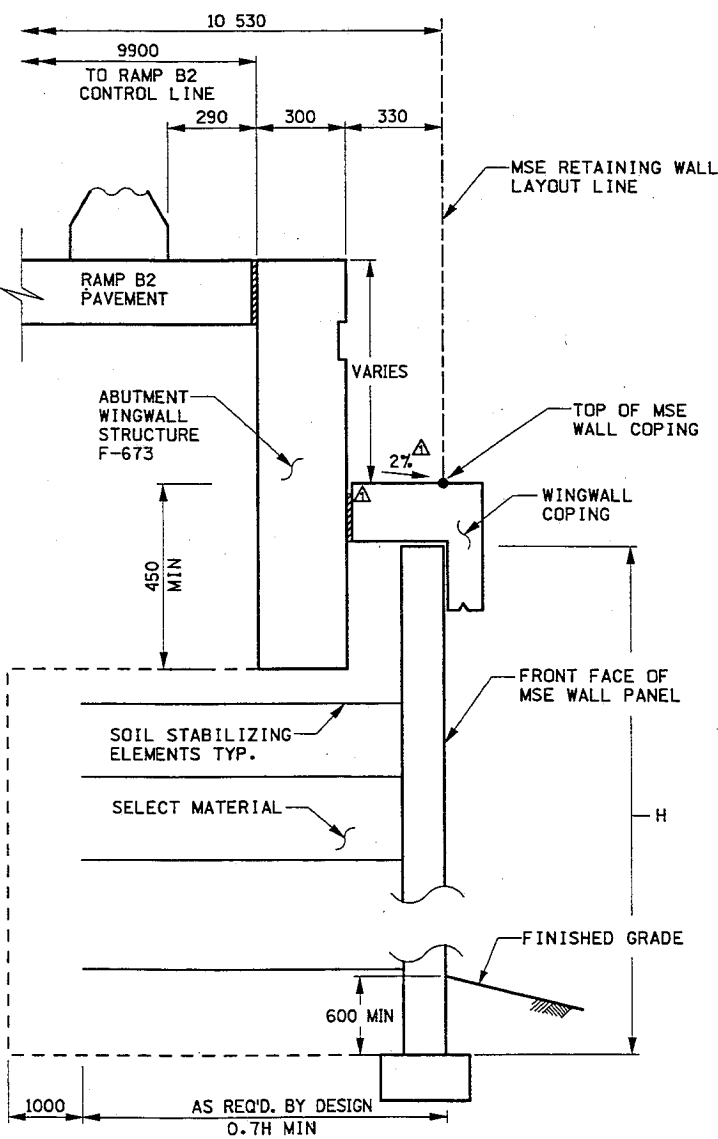
**WINGWALL COPING DETAIL**  
 (ALL DIMENSIONS ARE IN MILLIMETERS)



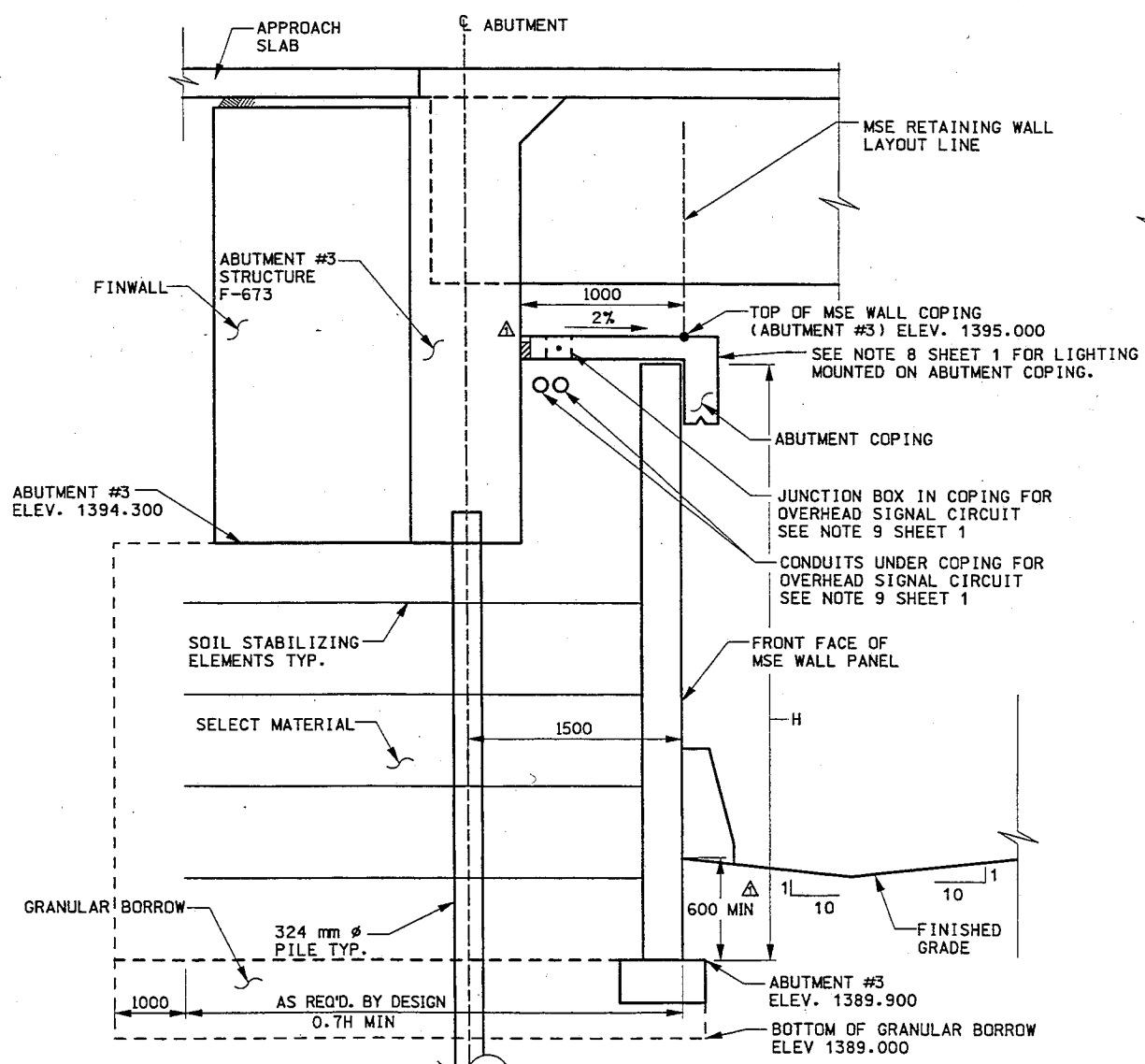
**ABUTMENT COPING DETAIL**  
 (ALL DIMENSIONS ARE IN MILLIMETERS)



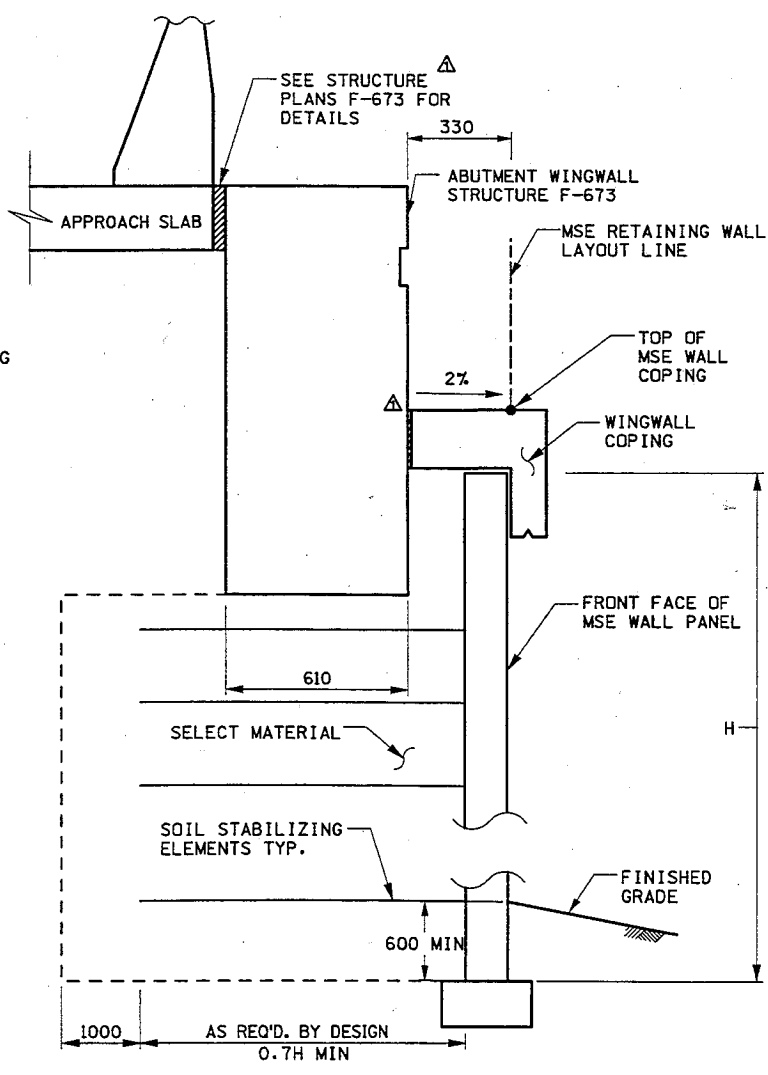
**DETAIL A**



**SECTION A-A**  
 (ALL DIMENSIONS ARE IN MILLIMETERS)



**SECTION B-B**  
 (ALL DIMENSIONS ARE IN MILLIMETERS)



**SECTION C-C**  
 (ALL DIMENSIONS ARE IN MILLIMETERS)

12/06/07 PM 87/25/08 phycvj\24344\_SPOOL\_#255\sheet1\1853\_wall\_53106N

UTAH DEPARTMENT OF TRANSPORTATION REGION 3, OREM, UTAH STRUCTURES DIVISION	DESIGN HCB 4/00 DRAWN SFS 4/00 CHECK SFS 4/00	REVISIONS
MSE RETAINING WALL R-367-B UNIVERSITY PARKWAY SITUATION & LAYOUT	APPROVAL RECORD DATE 7/25/00 APPROVED DATE 7/25/00 PROJECT # SP-15-6(31)270	REMARKS
UTAH COUNTY R-367-B DWG. NO.	QUANTITY	REVISIONS
SHT. 3 OF 3		