



FIELD SHEET
NOMINAL SCALE 1" EQUALS

DIST. NO. 3 TOWN OF New Durham
COUNTY STRAFFORD INVENTORY NO. 102
SHEET 1 OF 1 ROAD NAME Drew Road

System - Class
PAVEMENT WIDTH
PAVEMENT TYPE
NUM. LANES/WIDTH
SHOULDER TYPE L/R
MEDIAN TYPE/WIDTH
FUNCTIONAL CLASS
ROUTE SIGNING/ROUTE #
FA SYS/RTE-SEC.
PAVA/AREA CODE
MAINTENANCE S/W

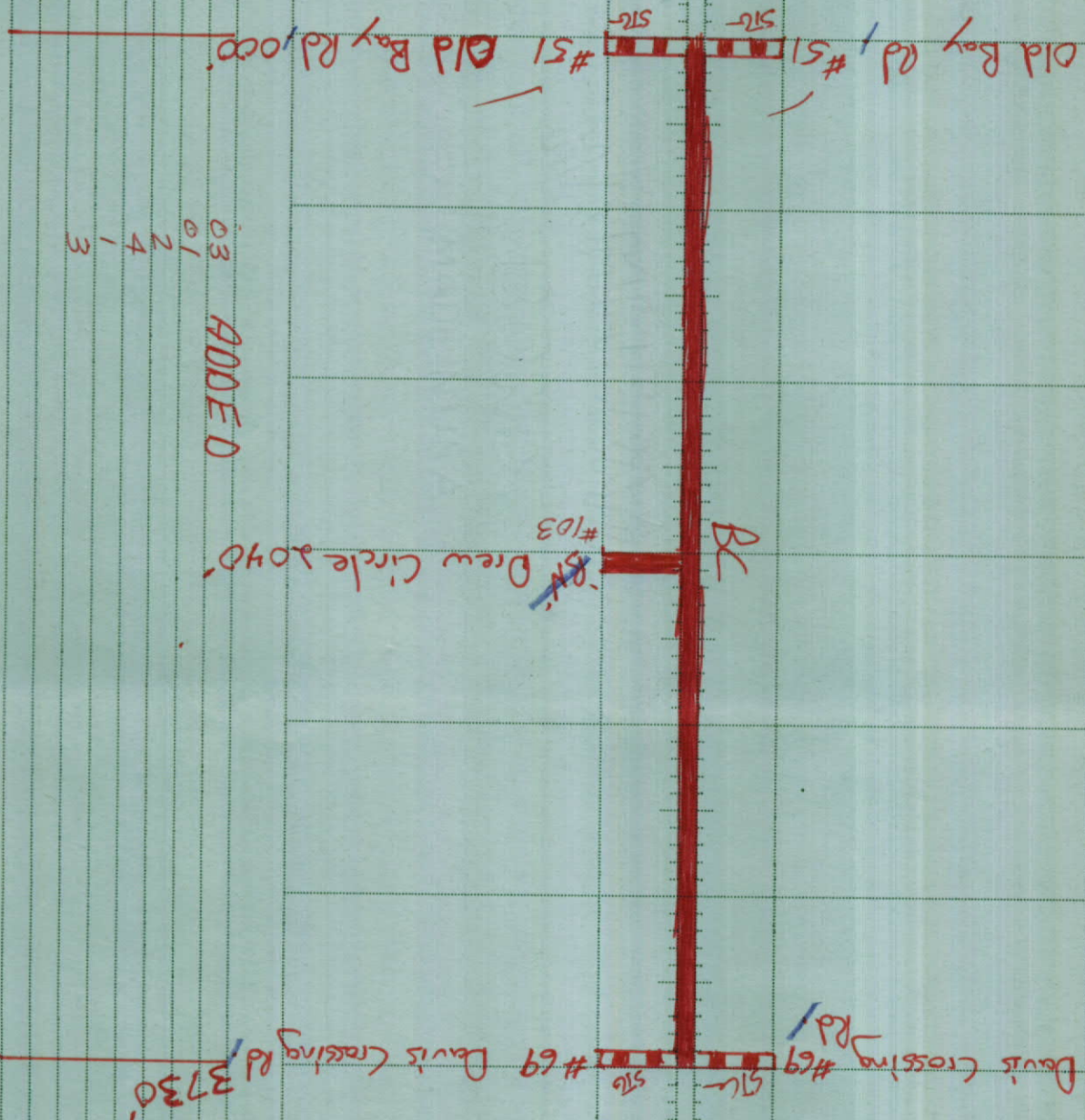
LEGEND

TOWN, GRANGE OR OTHER HALL (USE LETTERS T, G OR O TO DENOTE KIND)
CHURCH
SCHOOL
CEMETERY
HOSPITAL
HIGHWAY BRIDGE
HIGHWAY UNDERPASS
RAILROAD
TRANSMISSION LINE
FIRE STATION
POLICE STATION

CONSTRUCTION AND MAINTENANCE RECORD

GIC
SPECIAL SYSTEMS
FACILITY TYPE
TRUCK ROUTE
TOLL
ACCESS CONTROL

Revisions:



STRAIGHT LINE DIAGRAM	
ROUTING	2/14/92
COMPUTER/COLORING	
HAND CONTROL	
S.L.D. UPDATED	
MAPPING COMPLETED	
FILE YEAR	91

SURFACE TYPES

HIGH TYPE
(61) (62) (72)

MEDIUM TYPE
(51) (52) (53)

GRAVEL
(40)

G.E.D.
(30)

UNIMPROVED
(20)

PRIVATE

BRK. BLK. MISC.
(80)

TOTAL MILES