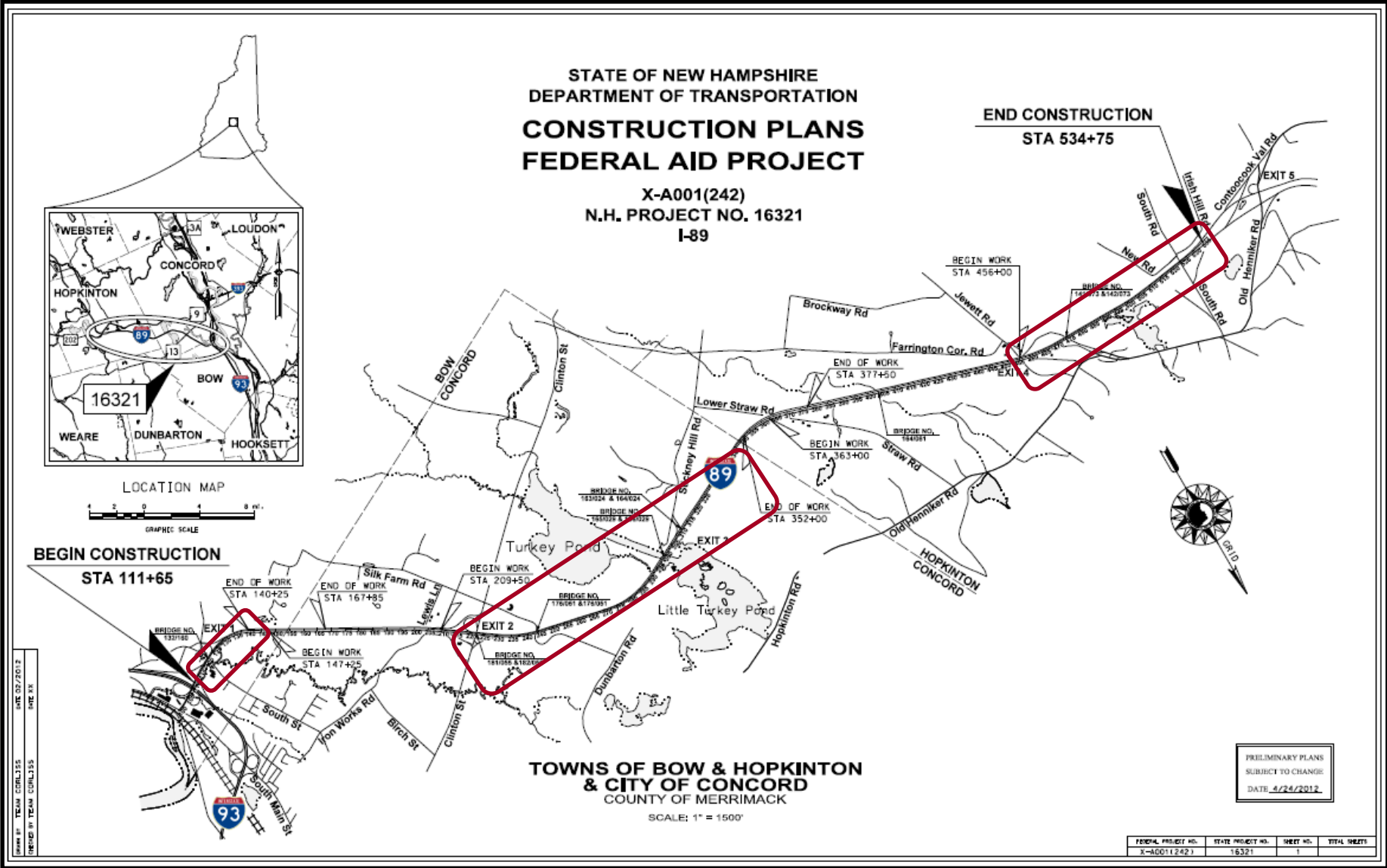


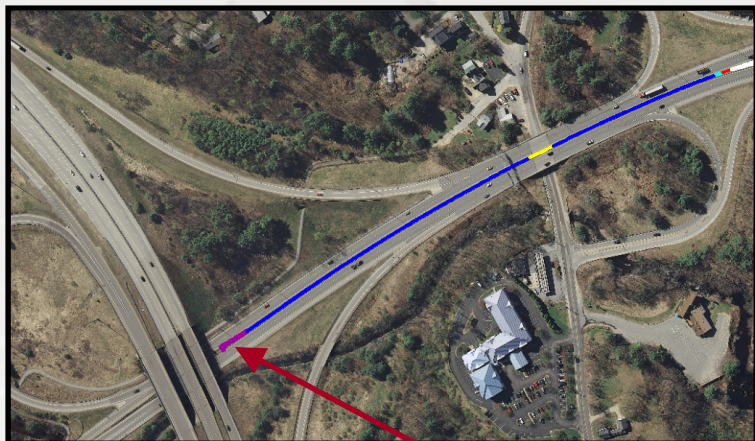
Bow-Hopkinton 16321

Median Barrier

Median Barrier Need Areas



Median Barrier Location 1



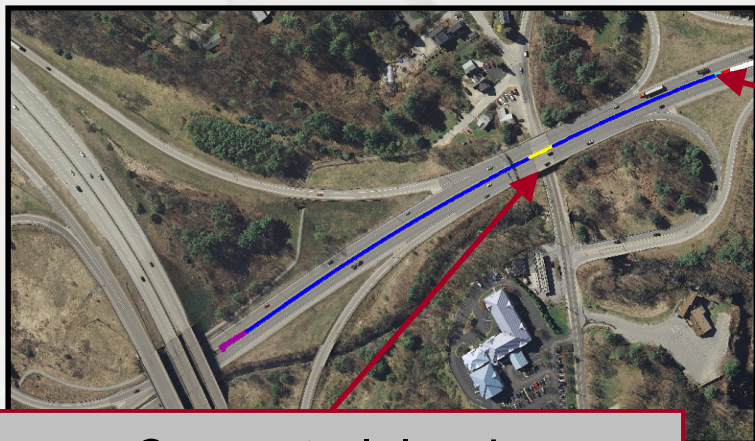
Project Match into 13742-B



Existing Median W-Beam Rail



Median Barrier Location 1



Remove Concrete Island on Bridge 132/160 Over South St.



Proposed Median Concrete Barrier



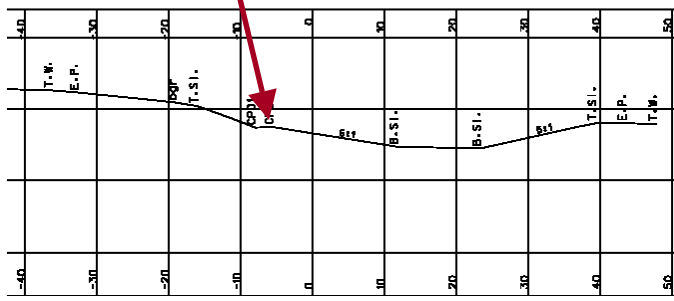
Median Barrier Location 1

Existing W-Beam Rail
SB & End NB @ Exit 1



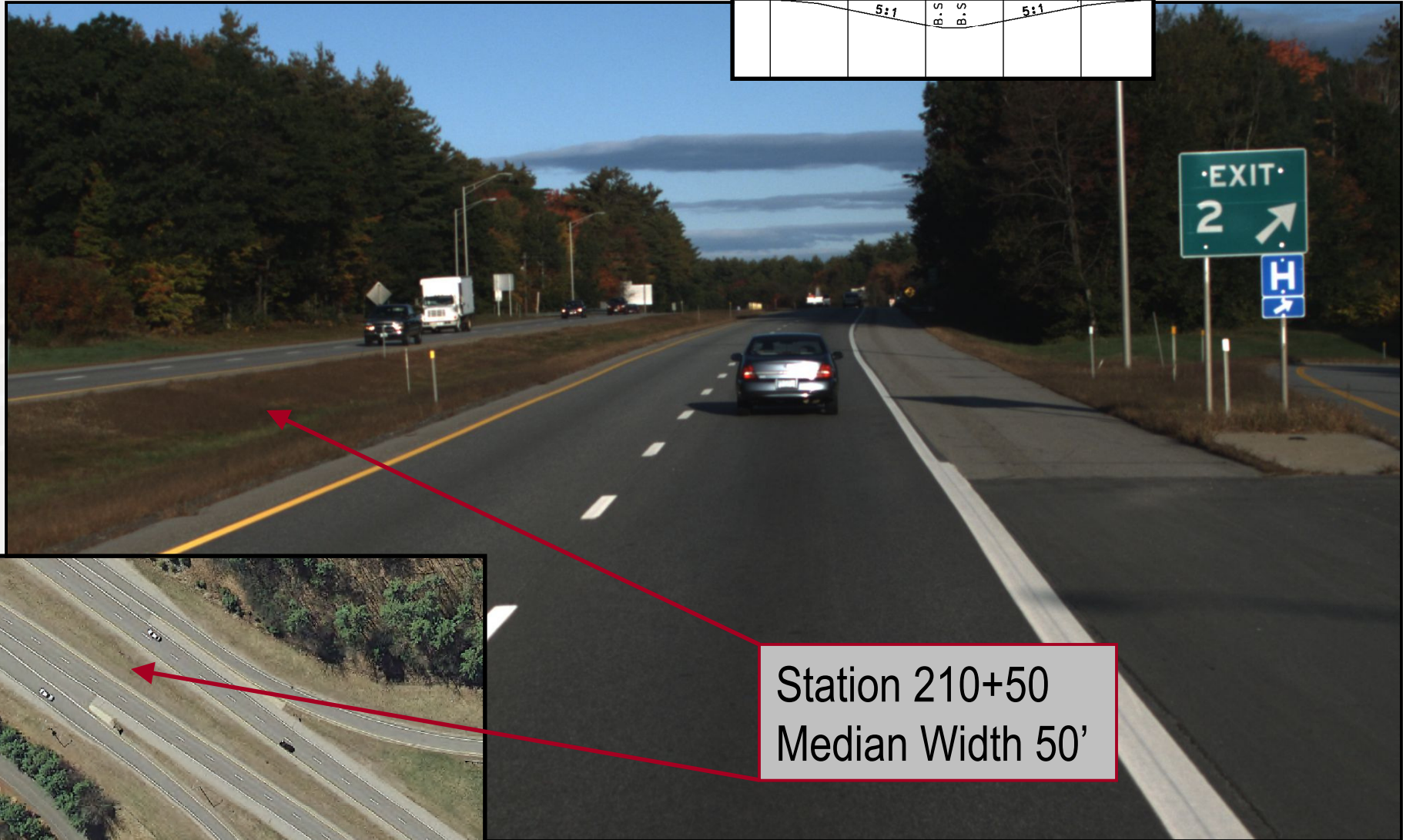
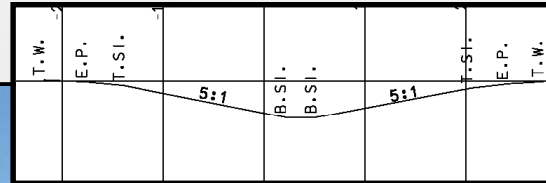
Median Barrier – Sign Base Need

Existing SB Sign Base
55' Off NB Travel Way



138+50

Median Barrier Location 2



Station 210+50
Median Width 50'

Median Barrier Bridge Decks



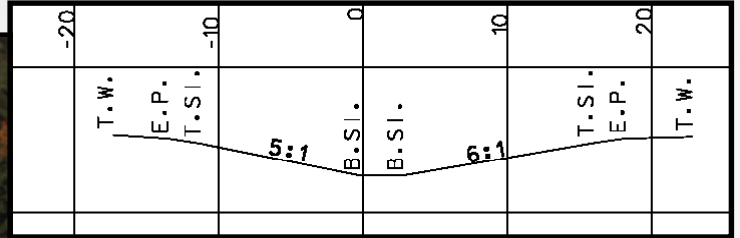
Bridge 181-2/055
Over NH Route 13



Bridge 175-6/051
Over Silk Farm Road



Median Barrier Location 2 Curve



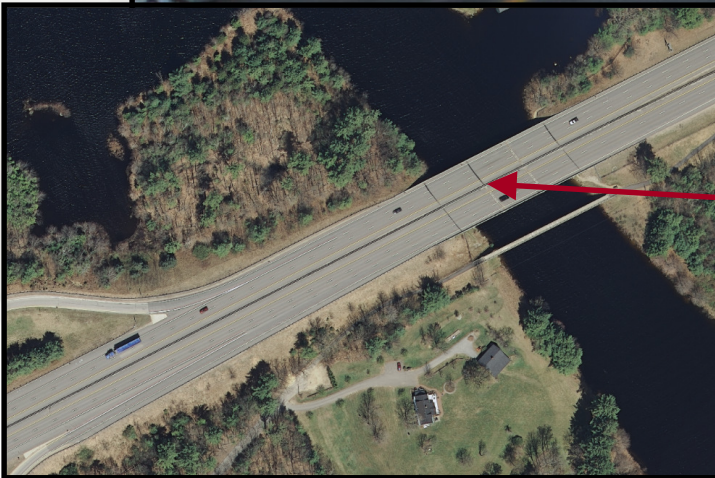
Station 269+50 Median Width
40' SB Outside Curve R=2900'



Median Barrier Location 2 Transition to Existing



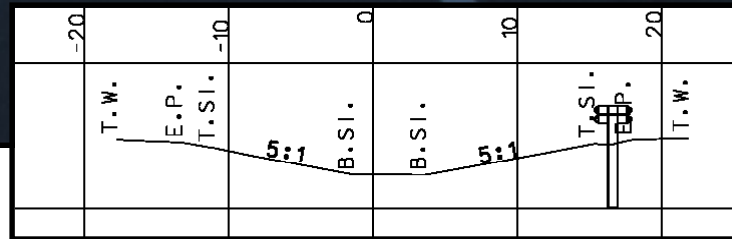
Transition to Existing Beam
Barrier Over Turkey Pond & Exit 3



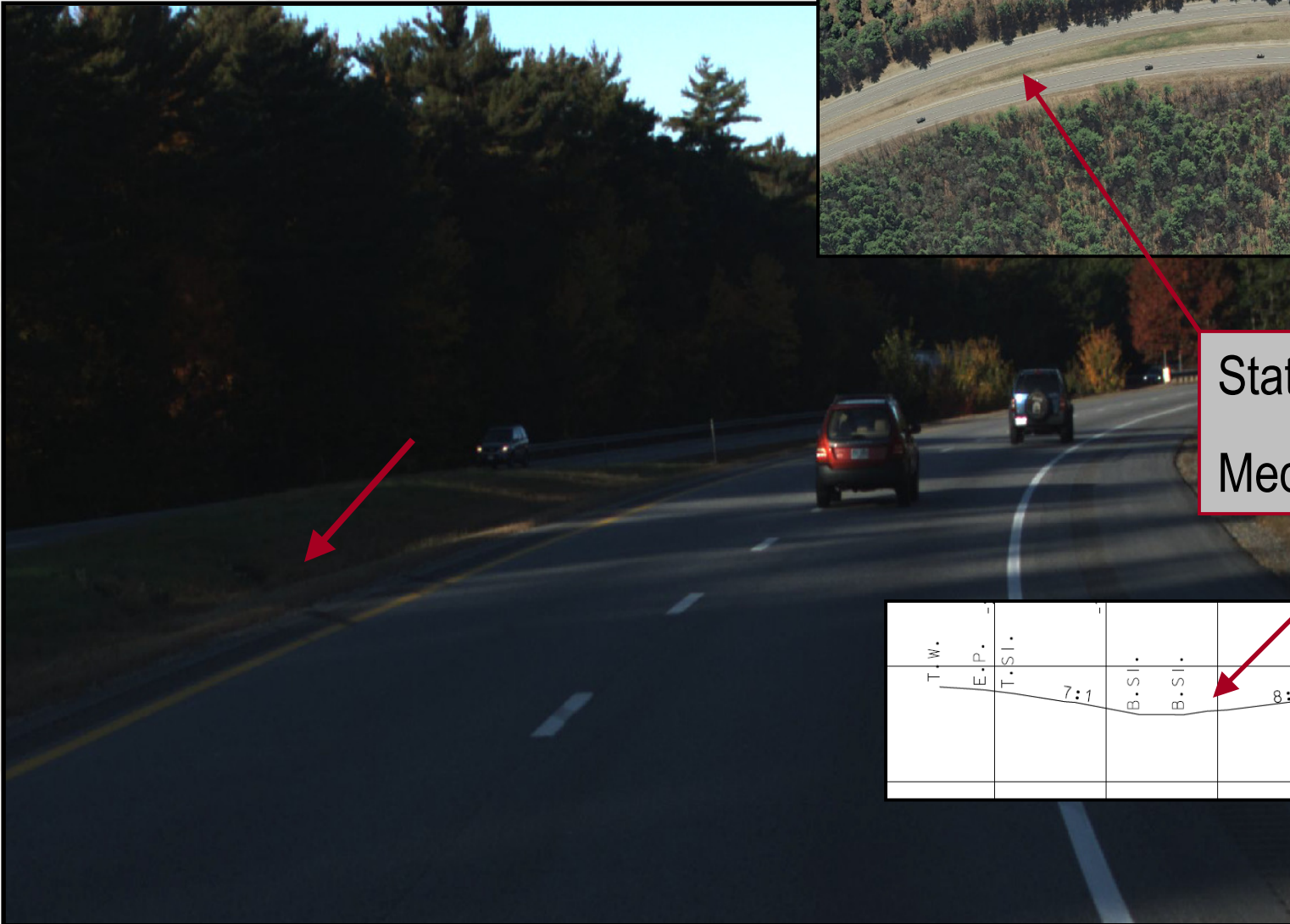
Median Barrier Location 2



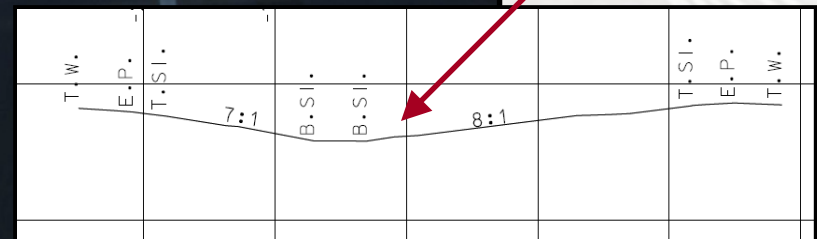
Station 322+75 Median Width 40'
 NB Existing Double Faced Beam Rail



Median Barrier Location 2 Termination



Station 351+00
Median Width 53'

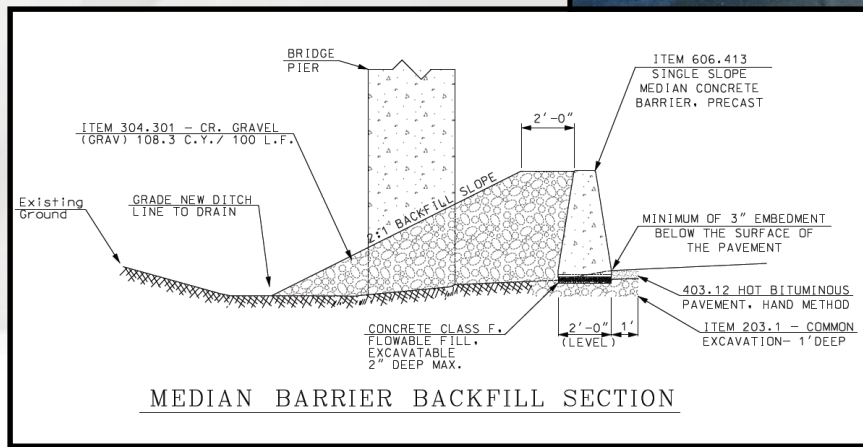


Median Barrier Bridge Pier Protection Exit 4



Proposed 48" Barrier Treatment

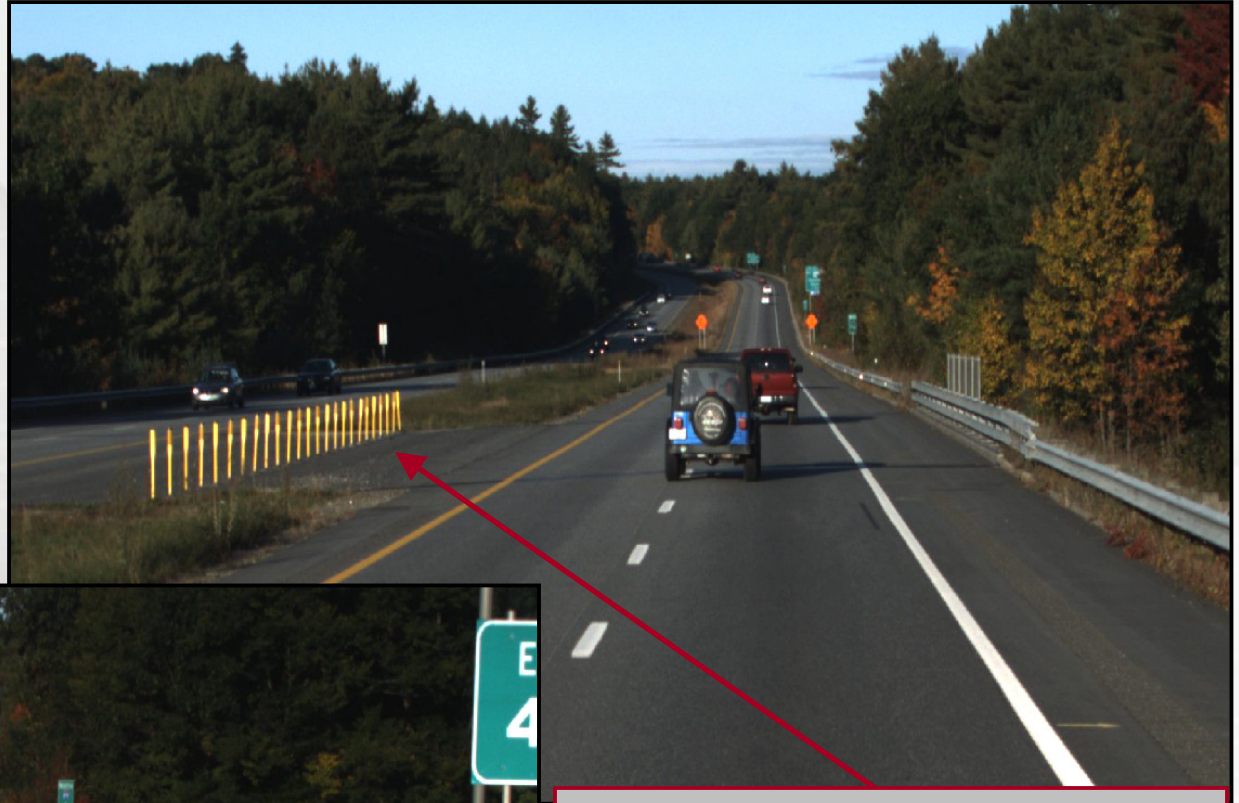
Station 456+00 Existing 32" Barrier to Pier 4'



Median Barrier Location 3

Station 466+50

Median Width 52'



Station 475+00 42' @
Bridge 141/073 & 142/073

Median Barrier Location 3 – South Road

Station 502+50
Median Width 40'



Transition – Double Face Beam to
48" Concrete Pier Protection

