

CORRIDOR NEWS

I-93 CTAP Updates & Highlights

Spring/Summer 2007

Highlights:

- Upcoming CTAP Events
- Open Space Assessments Begin!

Contents:

Conservation	
Commission Institute	2
Enhanced GIS & Land Use Mapping	3
Transportation & Land Use Workshop	3
Project Manager's Notes	4



Open Space Assessments Begin!

Through the CTAP Year-One program, Local Open Space Planning, CTAP is partnering with the Society for the Protection of New Hampshire's Forests (SPNHF) to assist interested communities in improving local open space plans in their towns.

This summer, under this CTAP program, teams from the Regional Planning Commissions (RPCs) and SPNHF will begin working with interested CTAP Communities to:

- Identify land that should not be developed, and document *why*
- Map those lands and link them into a functioning "green infrastructure"
- Create strategies for the protection of those lands
- Ensure the plan works ecologically, financially, and legally for the towns

Interested communities will work with SPNHF and the RPC's to determine how much of the above work has already been started. Then, opportunities to protect green spaces through

purchase and easement, as well as through regulation will be considered. By late 2007 and through 2008, the teams will work with each interested corridor community to put together a solid conservation plan.

Interested towns will assemble a "CTAP team," composed of representatives of the governing body, planning board, conservation commission and staff. The CTAP teams will meet with RPC and SPNHF representatives to review existing planning documents related to conservation. The next phase will be a series of at least four meetings in which a larger group of the towns' citizens set conservation goals, identify a green infrastructure, match strategies to individual parcels, and create a funding plan.

The planning teams will be contacting each community in the near future to begin the assessments. Please contact Ansel Sanborn at the New Hampshire Department of Transportation (contact information on the back side of this newsletter) with any questions. ■

Upcoming CTAP Events

CTAP Community Meeting

- Thursday, May 31, 2007

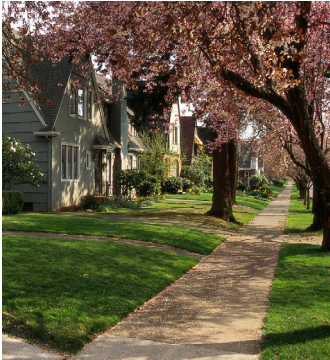
CTAP Corridor Event

- Saturday, September 29, 2007

For questions about these and other CTAP events please call:

(603) 271-7971

Conservation Commission Institutes



The CTAP Conservation Commission Institute is underway! This Year-One CTAP program is being led by the Regional Planning Commissions (RPCs). Each RPC will hold a series of meetings throughout the year that will cover a variety of topics relevant to the work of Conservation Commissions. Depending on where your town is located, there may be an upcoming meeting soon!

The first Conservation Commission Institute meeting provided towns with information on new conservation land management tools available through CTAP and its partners. The tools presented at the first meeting were regional and municipal scale maps under the Wildlife Action Plan and the Natural Services Network.

The Wildlife Action Plan has resulted in Wildlife Habit Maps. The Wildlife Habit Maps show not only where animal and plant habitats occur in the state, but also identify the highest quality habitats, which are referred to as Conservation Focus Areas. For more information on the Action Plan please visit:

www.wildlife.state.nh.us/

The Natural Services Network Maps provide information to towns on water supply, flood storage, economically important soils, and significant wildlife habitat and allow the towns to overlay local land use maps. The goal of using natural services and local land use maps at the same time is to give planners more information on which lands to protect,

based on the natural services they offer, and their connectivity or proximity to other types of lands around the region.

Additional Conservation Commission Institute meetings will be held throughout the year in each region. The focus of each meeting will be catered to meet regional needs and CTAP goals and objectives. For information about the next Conservation Commission Institute meeting in your region please contact your Regional Planning Commission office. Contact information is located on the back of this newsletter. ■



Projects Approved for Local Discretionary Funds

Chester: Feasibility study for an impact fees ordinance

Concord: Development of an aquifer protection ordinance

Danville: Land use and zoning study to implement mixed-use zoning provisions for their Main Street

Fremont: Publication and distribution of informational flyer on conservation subdivisions

Goffstown: Survey, planning, and design of a non-motorized transportation corridor (i.e. a bike/pedestrian trail)

Raymond: Resident & business questionnaire and survey to support the visioning chapter of Master Plan Update

Windham: Impact fees studies for public safety and recreation services

Enhanced GIS and Land Use Mapping

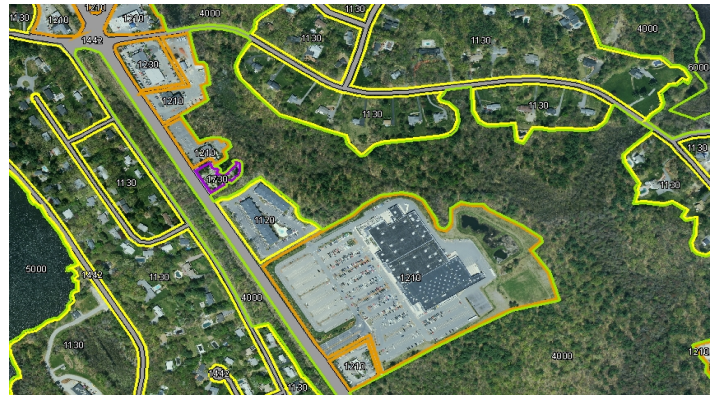
As CTAP moves forward on Year-One programs and establishes priorities for Year-Two and beyond, the importance of having comprehensive Geographic Information Systems (GIS) information has become increasingly clear. From municipal master plans to regional build out analyses, conservation planning, transportation, and future infrastructure right of ways, GIS can be used to visually and quantitatively analyze current and future land use and population growth scenarios. The problem that most often arises in setting up such analyses is that the available GIS data is incomplete, out of date, or of insufficient quality.

To address this problem, a partnership between the

four RPCs, the CTAP communities, and the Complex Systems Research Center at UNH (UNH GRANIT) has formed to update the GIS information for the region. Each of the four RPCs is delineating the land use types for their towns. UNH GRANIT is coordinating the project to ensure quality control and consistency, and will provide technical assistance to the towns when the information is ready. The final product will be one batch of GIS data for the whole CTAP region and will include many different land uses, including roads, areas of hydrologic concern, public water and sewer locations, and wetlands.

Some towns will be able

to use this data to compare the current land use to that of previous studies to help understand the land use change over time, and the methods being used should allow towns to compare current land use with future studies.



One of the enhanced GIS maps

Transportation and Land Use Planning Workshop

On April 19, 2007 the NH DOT hosted a Community Workshop, "Connecting Transit and Land Use." This workshop provided CTAP communities information on how to address the elements of successful transit and supporting land use.

Ansel Sanborn and Kit Morgan set the stage with an introduction to CTAP and a quiz to give the participants some background for the discussion.

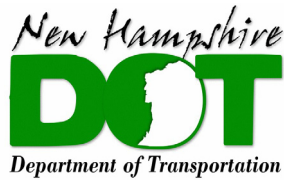
Steve Williams from the

Nashua RPC led a discussion focused around how participants can promote transit-oriented development in their towns. The discussion then transitioned into a remarkable presentation that looked at possible development sites along the CTAP corridor. The Nashua RPC generated maps of the sites that aided in the conversation.

Ken Kinney from the I-93 Transit Investment Study led the last discussion which exposed issues impacting successful bus

transit, rail transit, and transit-oriented design. He also discussed possible connector lines for rail systems to connect Manchester and Andover or Lowell, Massachusetts.

"CTAP is and will be a very powerful force in helping us protect our natural resources and rural character."
-CTAP Participant



John O. Morton
Building
7 Hazen Drive
Concord, NH
03302-0483

For more
information contact
Ansel Sanborn

PHONE:
603-271-7971

E-MAIL:
asanborn@
dot.state.nh.us

Visit the CTAP website:
www.NHCTAP.com

Project Manager's Notes

CTAP has had a very productive winter. Our Working Groups are wrapping up this year's work and were able to bring together people from towns and agencies across the I-93 corridor to lay the groundwork for CTAP Year-Two programs.

Several great opportunities to leverage funds and assistance for our communities are coming to light and the Steering Committee is taking the lead on putting together how these partnerships will work.

We're all looking forward to the Community Meetings on May 31st and September 29th, where we

hope to recruit more people from the Corridor Communities to get involved in CTAP and help them link land use and transportation in their towns.

In addition to generating new ideas for Year-Two programs, it is important to know the effectiveness of the programs we already have. To meet this need, the evaluation model for Year-One programs has just been approved by the Steering Committee.

So far the Year-One programs have been very successful. The Community Assessments are getting underway and several towns are taking

advantage of the Local Discretionary Funds for technical assistance. Please see inside of this newsletter for the projects that have already been approved for funding.

I encourage you to contact me if you have any ideas or questions about CTAP, or if you'd like to know more about any of the opportunities I've mentioned. Have a great spring and summer!

-Ansel Sanborn, NHDOT
Project Manager

I-93 Community Technical Assistance Program

CTAP



New Hampshire Communities Planning Together

RPC Contact Information

Southern New Hampshire Planning Commission (SNHPC)
David Preece
Phone: 603-669-4664
Website: www.snhpc.org
Email: dpreece@snhpc.org

Rockingham Planning Commission (RPC)
Cliff Sinnott
Phone: (603) 778-0885
Website: www.rpc-nh.org
Email: csinnott@rpc-nh.org

Central New Hampshire Regional Planning Commission (CNHRPC)
Sharon Wason
Phone (603) 226-6020
Website: www.cnhrpc.org
Email: swason@cnhrpc.org

Nashua Regional Planning Commission (NRPC)
Steve Williams
Phone: (603) 883-0366 x17
Website: www.nashuarpc.org
Email: stephenw@nashuarpc.org