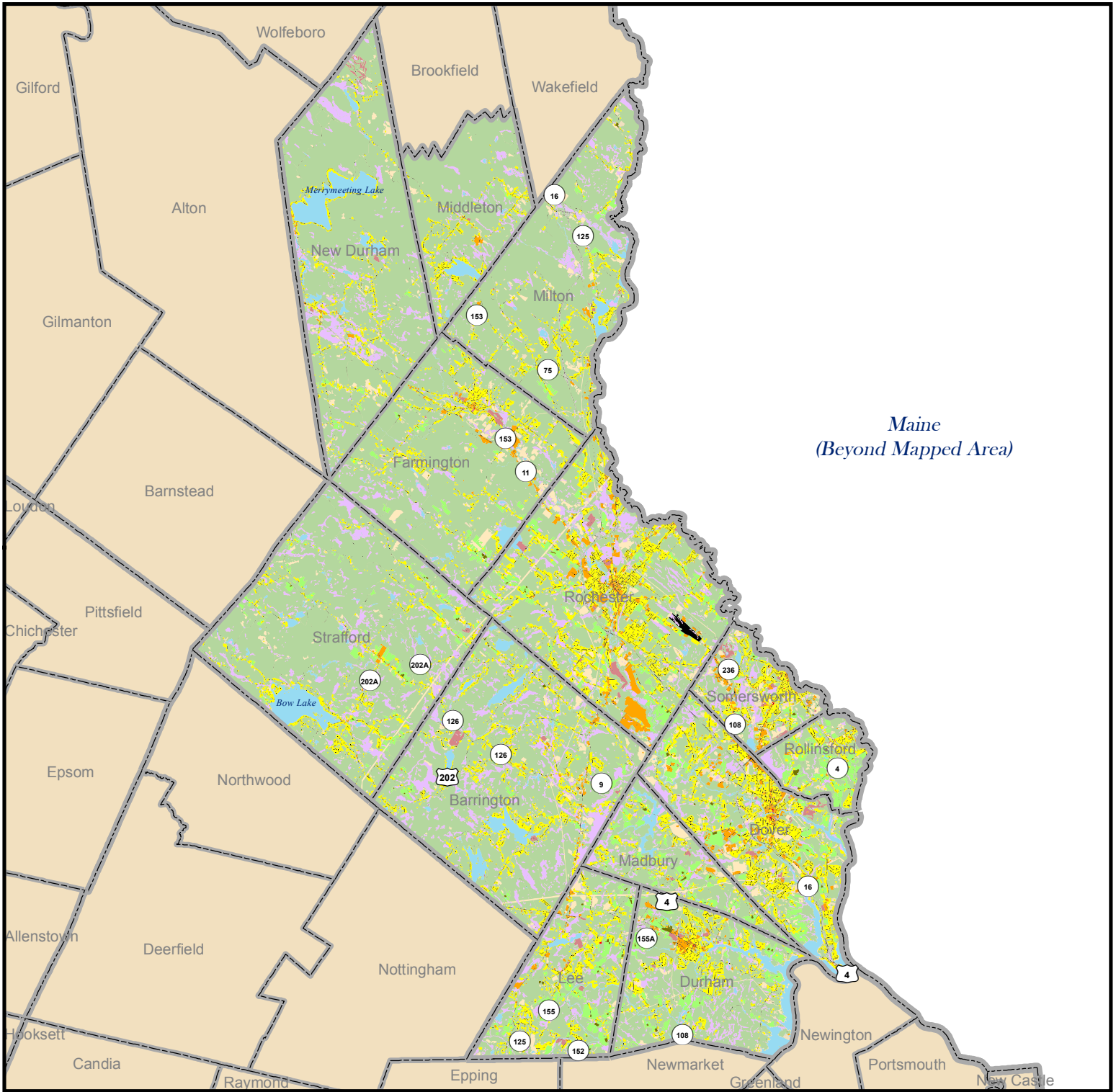


2005/2006 Land Use: Strafford County, New Hampshire



- | | | | |
|--|---------------------------|--|--------------------|
| | Residential | | Active agriculture |
| | Industrial/commercial | | Farmsteads |
| | Mixed urban | | Forested |
| | Transportation/roads | | Water |
| | Railroads | | Open wetlands |
| | Auxilliary transportation | | Idle/other open |
| | Playing fields/recreation | | |

Map Description:

This map displays 2005/2006 land use data for Strafford County, New Hampshire. The data were developed by interpreting 1-foot resolution natural color and color infrared digital orthophotographs (acquired in the spring of 2005/2006). The Strafford Regional Planning Commission conducted the mapping using the NH Land Use Mapping Standard (November, 2008) originally developed for the I-93 Reconstruction Project. The data were then submitted to the Complex Systems Research Center for incorporation into a regional land use data layer. For more information about this and other GRANIT data, please visit: www.granit.sr.unh.edu

Map by:
Complex Systems Research Center
Institute for the Study of Earth, Oceans, and Space
University of New Hampshire
November, 2011

