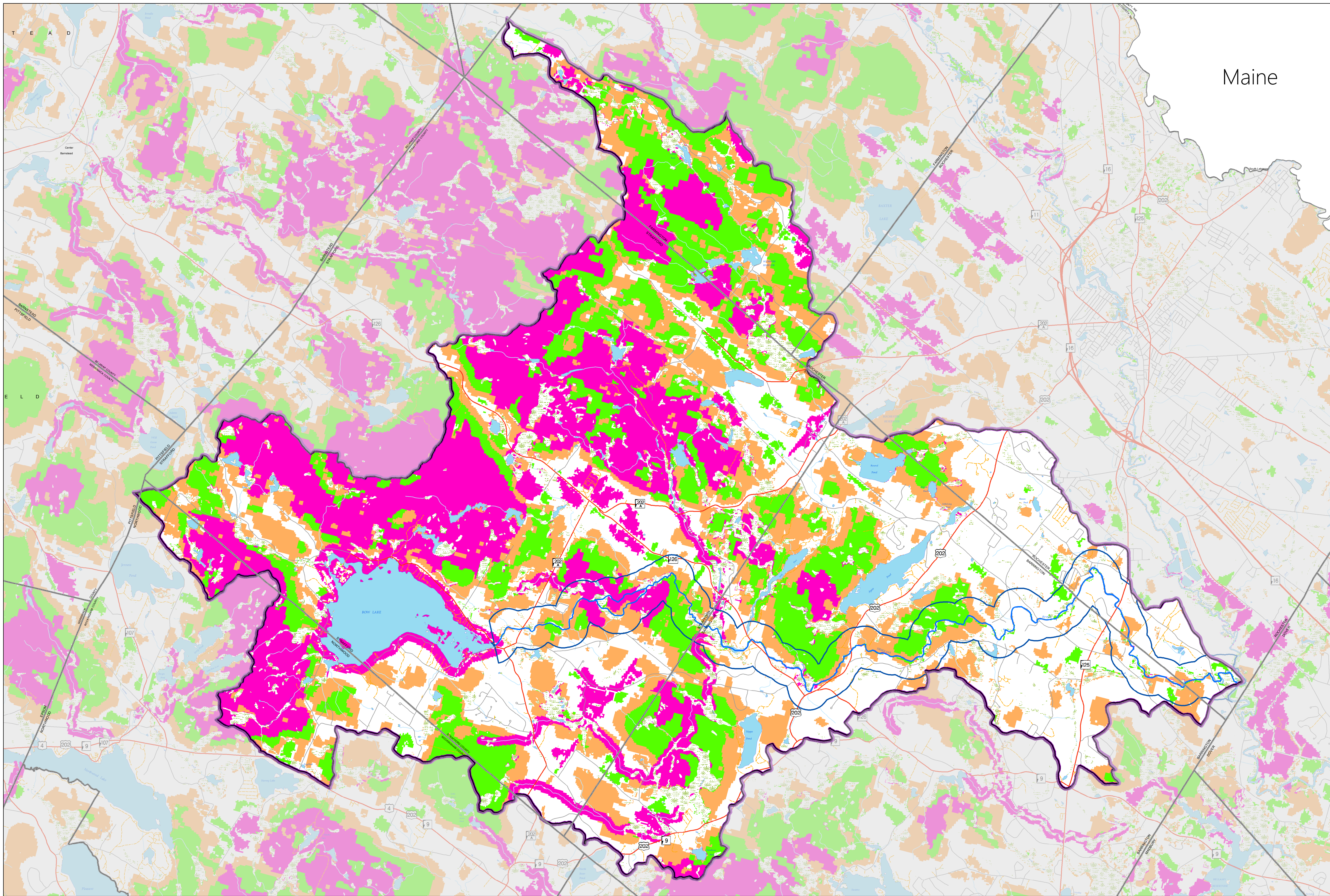


Isinglass River Management Plan

Figure 5b

Wildlife Action Plan Habitat Tiers



Legend

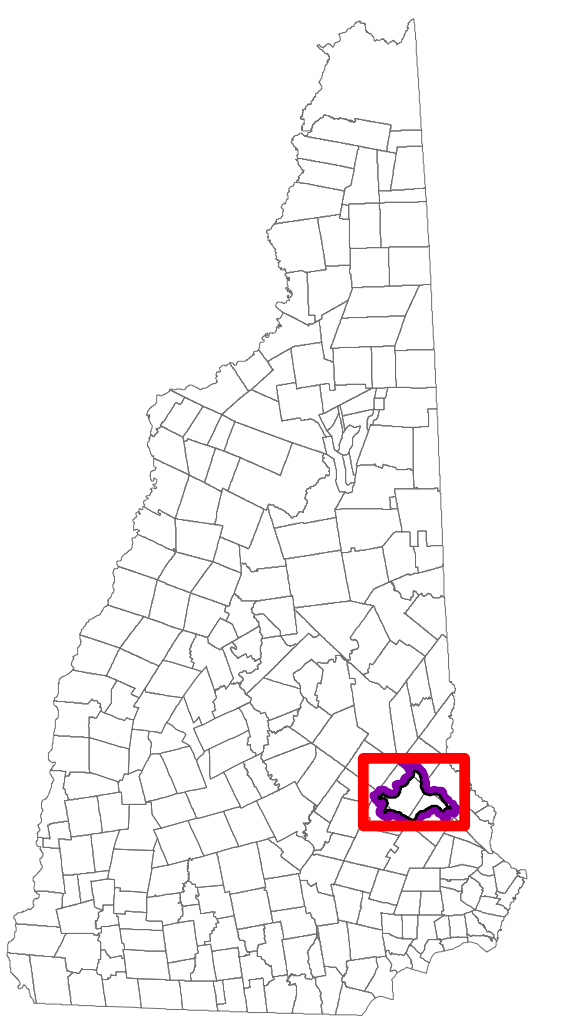
- Watershed Boundary
- Isinglass River Corridor
- Isinglass River
- Wildlife Action Plan [2015]
- Habitat Tier
 - Highest Ranked Habitat in NH
 - Highest Ranked Habitat in Biological Region
 - Supporting Landscapes

Map Feature Notes:

Highest Ranked in the State habitats include the top 15% by area of each habitat with a few exceptions. Especially rare habitats (alpine, dunes, saltmarshes, rocky shores) were included 100% to emphasize their importance. To ensure that the known critical habitats of state-listed species were included, we added that information as well.

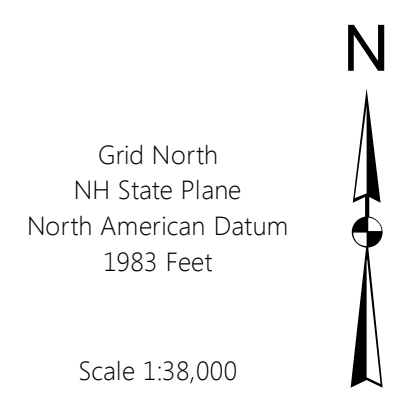
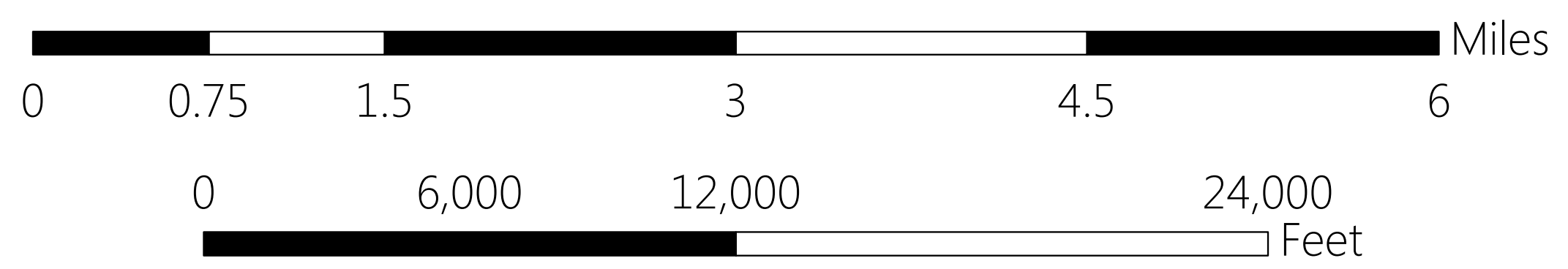
Highest Ranked in the Biological Region compares the habitats within regions of the state that have similar climate, geology and other factors that influence biology. As you drive south to north in the state, you can see how different the landscape looks, so comparing the North Country to the southeast is not quite balanced. Within each biological region (calculated separately for terrestrial versus wet habitats) the top 30% of each habitat is included, except that that area already within the Highest Ranked in the State is kept as top ranked, with the rest added as Highest Ranked in the Biological Region. Some high priority natural communities as ranked by NH Natural Heritage Bureau were added to highlight the importance of plant diversity in habitat quality.

Supporting landscapes includes the remainder of the top 50% of each habitat plus some very large intact forest blocks that were not otherwise top ranked.



Map Created by the Strafford Regional Planning Commission
150 Wakefield Street, Suite 12
Rochester, NH 03867
P: 603-994-3500 F: 603-994-3502
Isinglass River Management Plan
Path: M:\Region\MapRequests\RLAC\2017_RMP_Updates\Map\Figure5b_WAP_tiers_24x36
Date/Author: September, 2017 / KAP
Map should be used for planning purposes only.

Data Sources
Base features are from USGS 1:24,000 scale Digital Line Graphs, as archived in the GRANIT database. Digital data in NH GRANIT represent the efforts of the contributing agencies to record information from the cited source materials. Complex Systems Research Center (CSRC), under contract to the Office of Energy & Planning (OEP), and in consultation with cooperating agencies, maintains a continuing program to identify and correct errors in these data. Neither OEP nor CSRC make any claim as to the validity or reliability or to any implied uses of these data.



- ### Base Features Legend
- Municipal Boundary
 - Lake or Pond
 - River, Stream, Brook
 - Wetlands
 - State Road Type
 - Local Road Type
 - Private Road Type

