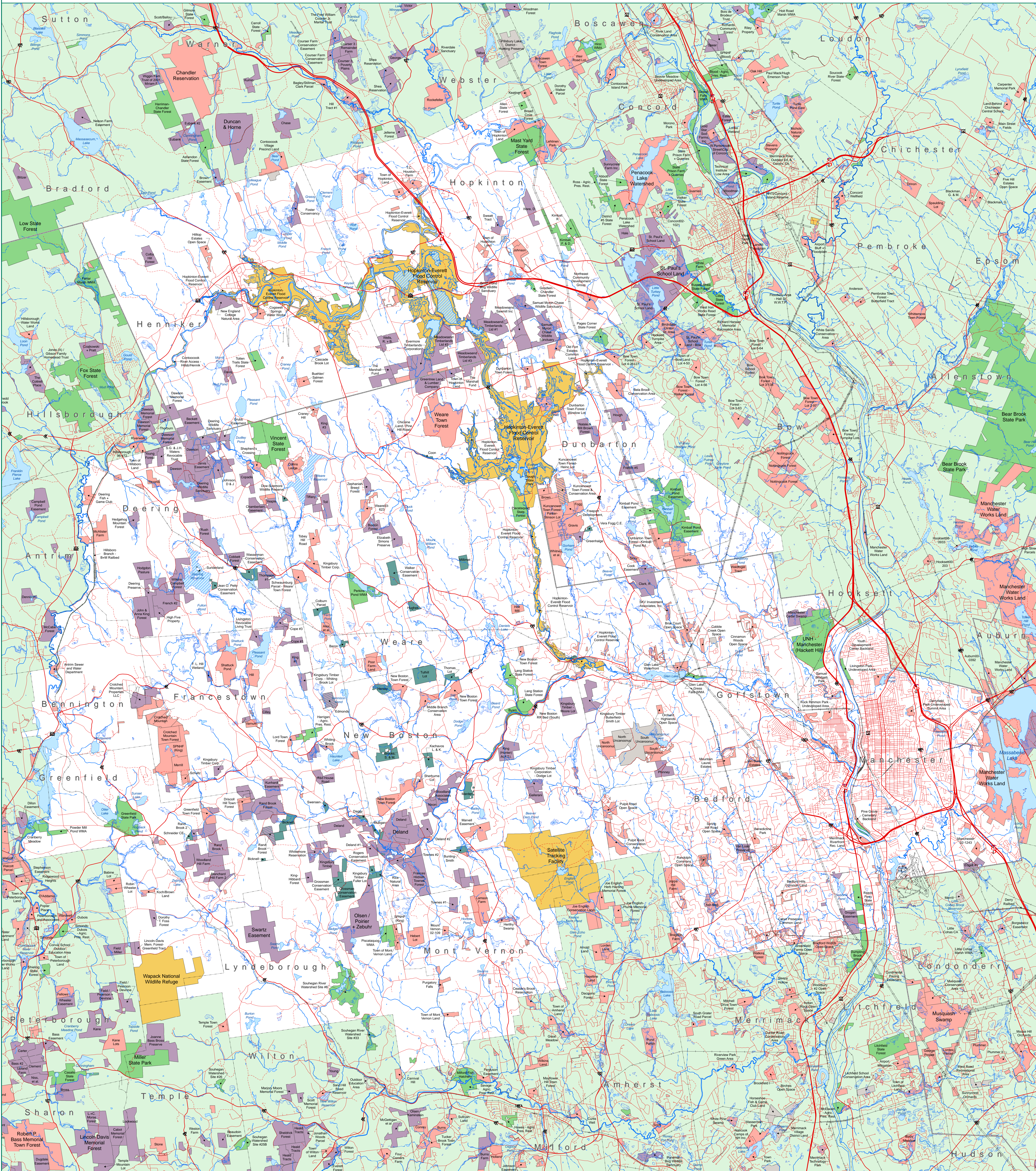


Conservation Lands in the Piscataquog Watershed Area



Conservation Lands By Protecting Agency Type:

- Federal
- State
- Municipal
- Quasi-Public
- Piscataquog Land Conservancy
- Other Private
- PLC Listed as Secondary Protecting Agency

Base Features:

- County Boundary
- Municipal Boundary
- Interstate Highway
- US Route
- State Route
- Local Roads
- Non-Public Roads
- Railroad
- Utility Line
- Lake/Pond
- Swamp/Marsh
- River/Stream
- Intermittent Stream

DATA SOURCES:

The Conservation/Public Lands data set is based on mapping at 1:24,000 or larger by Complex Systems Research Center, the Society for the Protection of New Hampshire Forests, the New Hampshire Office of Energy and Planning, and other contributing agencies. The accuracy of the parcel boundaries varies depending upon the source documents utilized (tax maps, survey maps, etc.), and the resulting information is appropriate for planning purposes only. The data was last updated by Complex Systems Research Center in February, 2009.

Road data was provided by the New Hampshire Department of Transportation, December, 2006. Surface water features were extracted from 1:24,000 New Hampshire Hydrography Dataset, January, 2006. All other base features (town boundaries, railroads, and pipelines) were extracted from 1:24,000 USGS Digital Line Graphs, as archived in the NH GRANIT database, 1992.

1:54,000

0 4,000 8,000 12,000 16,000 20,000 24,000 Feet

0 1 2 Miles

Map by:
Complex Systems Research Center
Institute for the Study of Earth,
Oceans, and Space
University of New Hampshire
May, 2009

Map Prepared for:
Piscataquog Land Conservancy
5A Mill Street
New Boston, NH 03070
603-487-3331, www.plcn.org