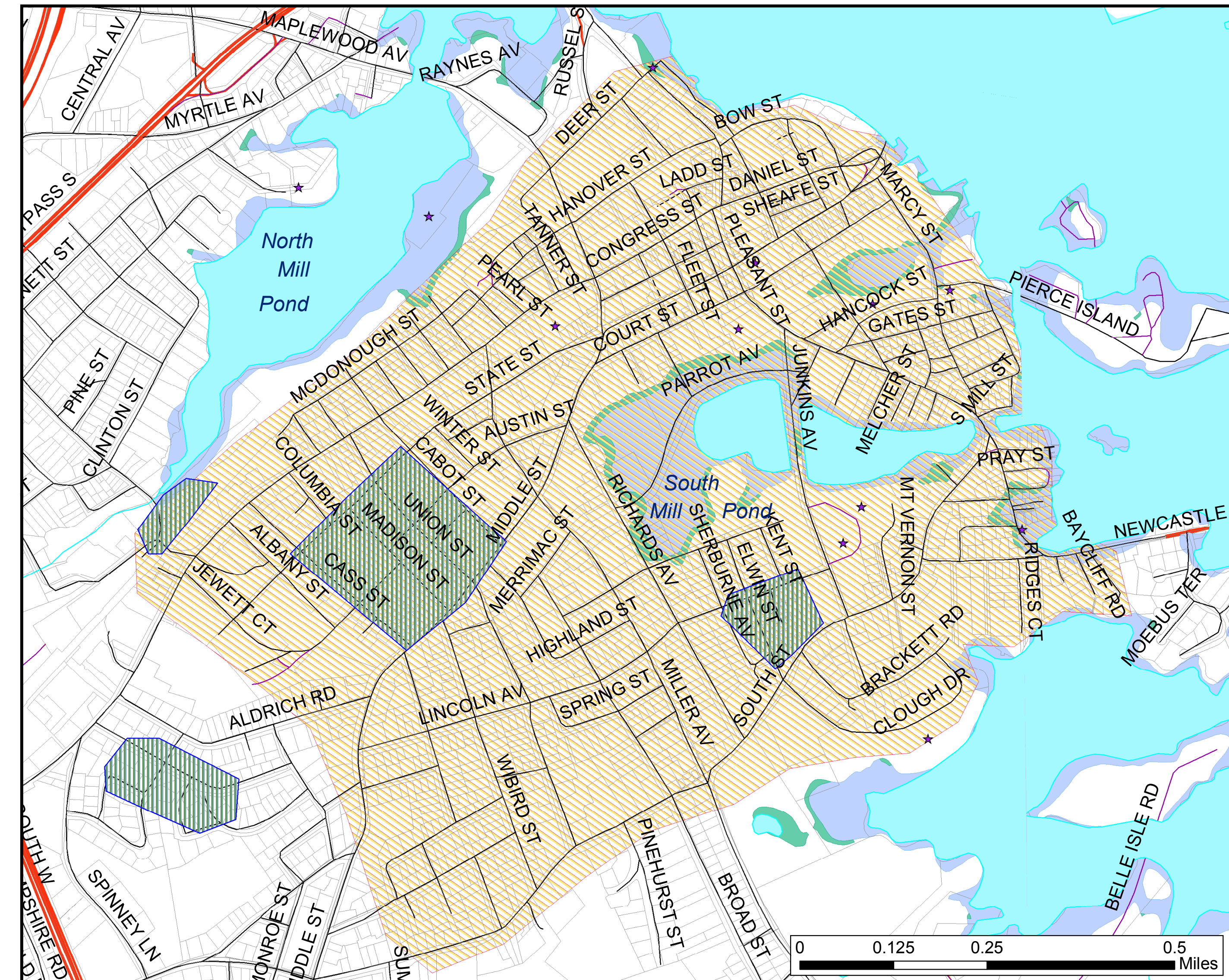
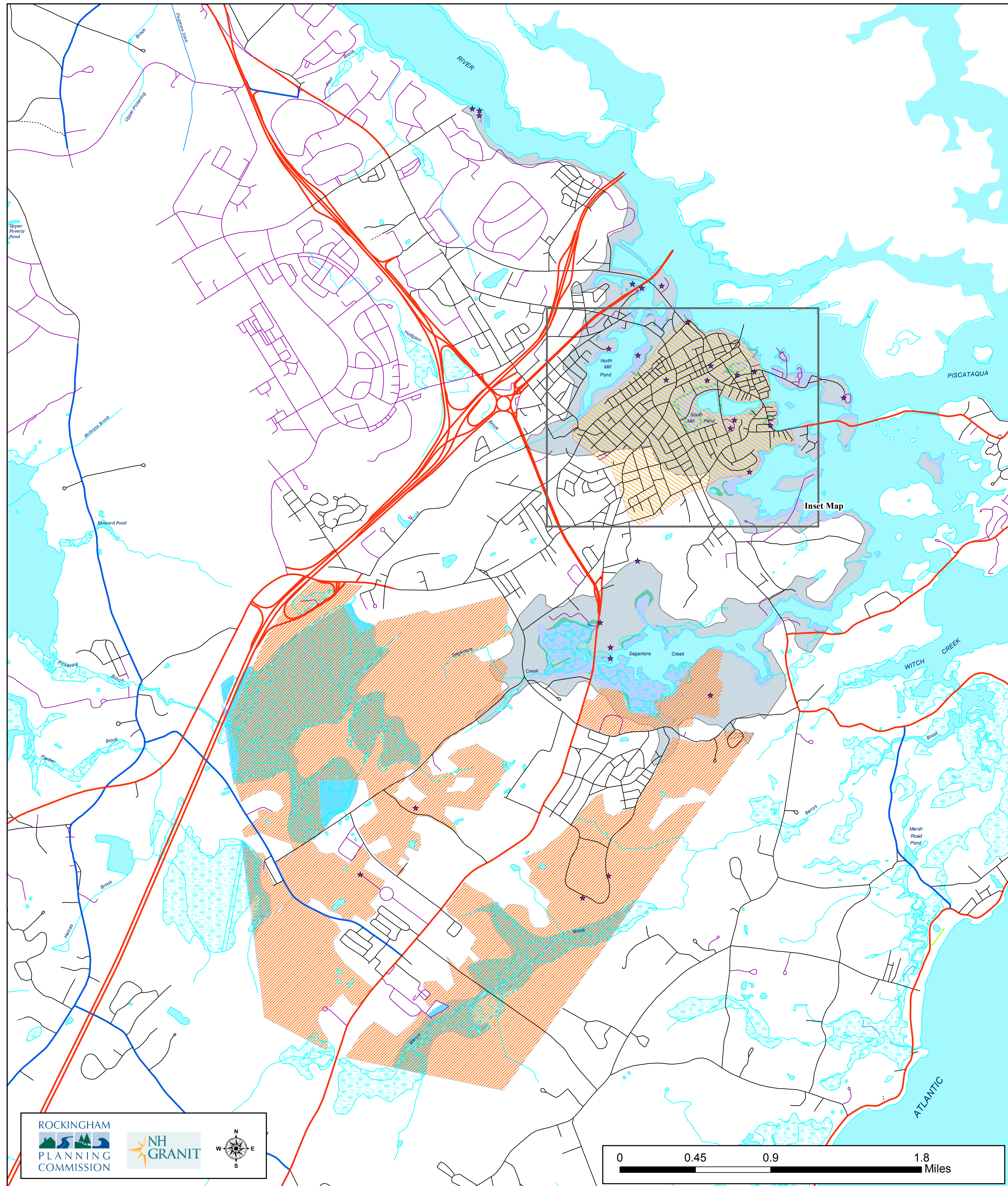


# Map 2: Past and Future Hazards, Portsmouth, New Hampshire



### Areas of Special Flood Hazard

- A Area inundated by 1% annual chance flooding, for which no base flood elevations (BFEs) have been determined
- AE Area inundated by 1% annual chance flooding, for which base flood elevations have been determined
- X500 Area inundated by 0.2% annual chance flooding; an area inundated by 1% annual chance flooding with average depths of less than 1 foot or with drainage areas less than 1 square mile; or an area protected by levees from 1% annual chance flooding.

### Areas of Potential Local Hazard

- Zone of Local Flooding Problems
- Zone of Potential Wildfire Danger
- Zone of Potential Conflagration (Severe Urban Fire)
- Zone of Potential Storm Surge
- Critical Facilities in Potential Hazard Zone

### BASE FEATURES

- |  |  |
|--|--|
| <p><b>Roads</b></p> <ul style="list-style-type: none"> <li><span style="display: inline-block; width: 15px; border-bottom: 2px solid blue; margin-right: 5px;"></span> State Primary System</li> <li><span style="display: inline-block; width: 15px; border-bottom: 2px solid lightblue; margin-right: 5px;"></span> State Secondary System</li> <li><span style="display: inline-block; width: 15px; border-bottom: 1px solid black; margin-right: 5px;"></span> Local Roads (Municipal or Private)</li> <li><span style="display: inline-block; width: 15px; border-bottom: 1px dashed black; margin-right: 5px;"></span> Unmaintained Roads (Class VI)</li> <li><span style="display: inline-block; width: 15px; border-bottom: 1px dotted black; margin-right: 5px;"></span> Trail</li> </ul> <p><b>Parcels</b></p> <ul style="list-style-type: none"> <li><span style="display: inline-block; width: 15px; height: 15px; border: 1px solid black; margin-right: 5px;"></span></li> </ul> | <p><b>Surface Water Features</b></p> <ul style="list-style-type: none"> <li><span style="display: inline-block; width: 15px; border-bottom: 1px solid cyan; margin-right: 5px;"></span> Stream, Shoreline</li> <li><span style="display: inline-block; width: 15px; border-bottom: 1px dashed cyan; margin-right: 5px;"></span> Intermittent Stream</li> <li><span style="display: inline-block; width: 15px; border-bottom: 1px dotted cyan; margin-right: 5px;"></span> Apparent Wetland Limit</li> <li><span style="display: inline-block; width: 15px; border-bottom: 1px solid cyan; margin-right: 5px;"></span> Other Water Feature</li> <li><span style="display: inline-block; width: 15px; height: 15px; background-color: cyan; border: 1px solid cyan; margin-right: 5px;"></span> Bodies of Water</li> </ul> <p><b>Railroads</b></p> <ul style="list-style-type: none"> <li><span style="display: inline-block; width: 15px; border-bottom: 1px solid black; margin-right: 5px;"></span> Railroads</li> <li><span style="display: inline-block; width: 15px; border-bottom: 1px dashed black; margin-right: 5px;"></span> Abandoned Railroads</li> </ul> <p><b>Major Pipelines</b></p> <ul style="list-style-type: none"> <li><span style="display: inline-block; width: 15px; border-bottom: 2px solid black; margin-right: 5px;"></span> Major Pipelines</li> <li><span style="display: inline-block; width: 15px; border-bottom: 2px solid yellow; margin-right: 5px;"></span> Town Boundary</li> </ul> |
|--|--|

Past and future hazards were identified by the Hazard Mitigation Planning Committee from the City of Portsmouth. Information was gathered to accompany the development of a Hazard Mitigation Plan under the guidance and funding of the NH Bureau of Emergency Management. April, 2004.

FEMA Q3 Flood Data was created from the Federal Emergency Management Agency, National Flood Insurance Program, Q3 Flood Data DISC 23 (Maine, New Hampshire, Vermont). ARC/INFO Export files were retrieved from the CD cited above, imported into ARC/INFO, projected (from geographic coordinates, NAD27 to NH State Plane feet, NAD83), processed to reconstruct topology, and written back out as Export files. Any documentation files for the data can be had from RPC, and do not reflect the processing noted above and performed by Complex Systems Research Center, UNH, December, 1997.

Base data (town boundaries, hydrography, roads, railroads and utility lines) are taken from the USGS Digital Line Graph data, 1:24,000, as archived in the GRANIT database at Complex Systems Research Center, Institute for the study of Earth, Oceans and Space, University of New Hampshire, Durham, NH: 1992-1999. Roads have been updated from work done by Rockingham Planning Commission and NH Department of Transportation. Partial updates have been completed through 2000.