

Map 2 Past and Future Hazards North Hampton, New Hampshire

September 2005

- ### Areas of Special Flood Hazard
- | | | |
|--|------------------|--|
| | ZONE A | Area inundated by 1% annual chance flooding, for which no base flood elevations (BFEs) have been determined |
| | ZONE AE | Area inundated by 1% annual chance flooding, for which base flood elevations have been determined |
| | ZONE AO | An alluvial fan inundated by 1% annual chance flooding, for which average flood depths and velocities have been determined; flood depths range from 1 to 3 feet. |
| | ZONE VE | Area inundated by 1% annual chance flooding with velocity hazard (wave action); BFEs have been determined. |
| | ZONE X500 | Area inundated by 0.2% annual chance flooding; an area inundated by 1% annual chance flooding with average depths of less than 1 foot or with drainage areas less than 1 square mile; or an area protected by levees from 1% annual chance flooding. |

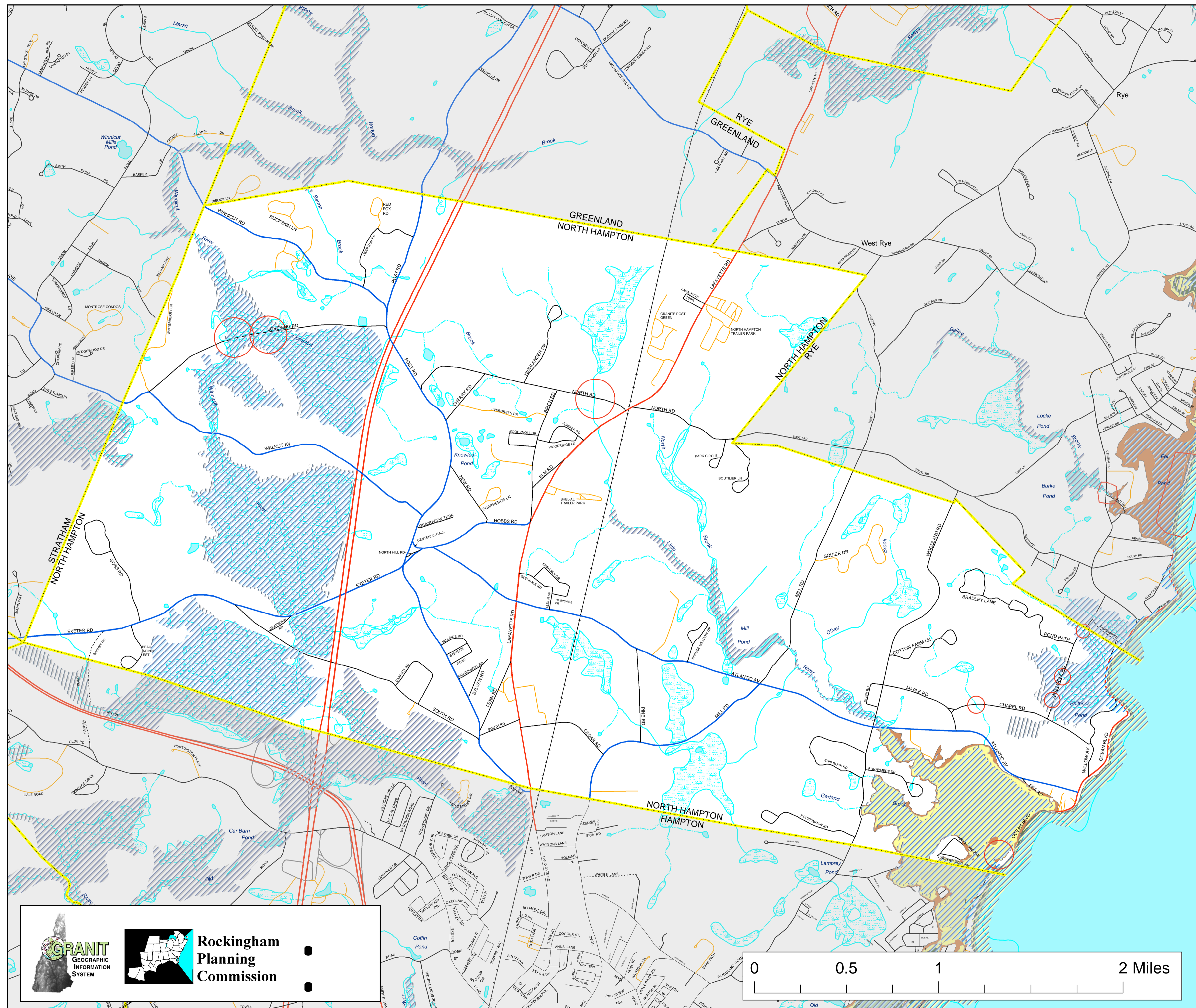
- ### Hurricane Surge Inundation
- | | |
|--|----------------------|
| | Category 1 Hurricane |
| | Category 2 Hurricane |
| | Category 3 Hurricane |
| | Category 4 Hurricane |
- Local Areas of Inland or Coastal Flooding Concern

- ### BASE FEATURES
- | | |
|------------------------------------|-------------------------------|
| Roads | Surface Water Features |
| State Primary System | Stream, Shoreline |
| State Secondary System | Intermittent Stream |
| Local Roads (Municipal or Private) | Major Powerlines |
| Unmaintained Roads (Class VI) | Major Pipelines |
| Trail | Town Boundary |
| Railroads | Apparent Wetland Limit |
| Abandoned Railroads | Other Water Feature |
| Other Water Feature | Bodies of Water |

Past and future hazards were identified by the Hazard Mitigation Planning Committee from the Town of North Hampton. Information was gathered to accompany the development of a Hazard Mitigation Plan under the guidance and funding of the NH Bureau of Emergency Management. April, 2004.

FEMA Q3 Flood Data was created from the Federal Emergency Management Agency, National Flood Insurance Program, Q3 Flood Data DISC 23 (Maine, New Hampshire, Vermont). ARC/INFO Export files were retrieved from the CD cited above, imported into ARC/INFO, projected from geographic coordinates, NAD27 to NH State Plane feet, NAD83), processed to reconstruct topology, and written back out as Export files. Any documentation files for the data can be had from RPC, and do not reflect the processing noted above and performed by Complex Systems Research Center, UNH, December, 1997.

Base data (town boundaries, hydrography, roads, railroads and utility lines) are taken from the USGS Digital Line Graph data, 1:24,000, as archived in the GRANIT database at Complex Systems Research Center, Institute for the study of Earth, Oceans and Space, University of New Hampshire, Durham, NH; 1992-1999. Roads have been updated from work done by Rockingham Planning Commission and NH Department of Transportation. Partial updates have been completed through 2000.



**Rockingham
Planning
Commission**

