

Map 1: Land Use Map Hampton Falls, New Hampshire

February 2006

Hampton Falls Land Use (1998)

- Residential
- Industrial/Commercial
- Mixed Urban
- Transportation/Roads
- Railroads
- Auxiliary Transportation
- Playing Fields/Recreational
- Forested
- Water
- Open Wetlands
- Open Land

BASE FEATURES

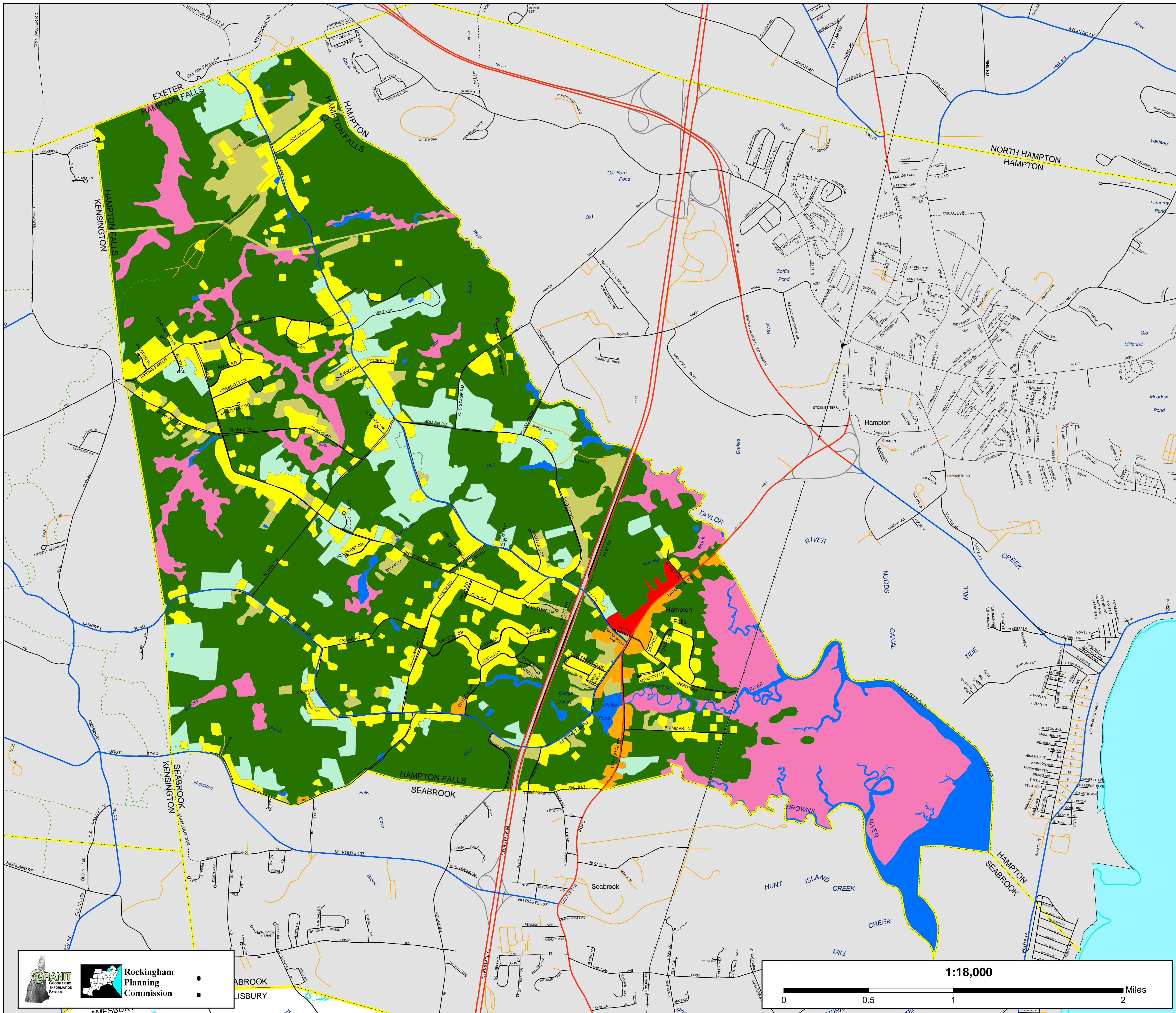
- | | | |
|--|--|--|
| Roads
<ul style="list-style-type: none"> Interstate Highways State Primary System State Secondary System Municipal Roads Ramp / Other Unmaintained Roads (Class VI) Private Roads | Railroads
<ul style="list-style-type: none"> Railroads | Surface Water Features
<ul style="list-style-type: none"> shoreline stream Intermittent stream Apparent wetland limit other water feature Bodies of Water |
| Power Lines
<ul style="list-style-type: none"> Power Lines | | |
| Political Boundaries
<ul style="list-style-type: none"> State Boundary Town Boundary County Boundary | | |

Land Use Data was acquired from GRANIT (The New Hampshire Geographically Referenced Analysis and Information Transfer System).

Land Use data is from Rockingham County, 1998. The data was developed through interpretation of 1:12,000 scale black and white digital orthophoto quadrangles from the United States Geologic Survey. For more information on this data layer please visit <http://granit.sr.unh.edu>

Base data (town boundaries, hydrography, roads, railroads and utility lines) are taken from the USGS Digital Line Graph data, 1:24,000, as archived in the GRANIT database at Complex Systems Research Center, Institute for the study of Earth, Oceans and Space, University of New Hampshire, Durham, NH; 1992 -1999. Roads have been updated from work done by Rockingham Planning Commission and NH Department of Transportation. Partial updates have been completed through 2000.

c:/d-trans/d-oem/d-map/Hampton Falls/HamptonFalls_Map1_LandUse.mxd



Rockingham Planning Commission

Seabrook
Liberty

