

Map 1: Land Use Map Hampton Falls, New Hampshire

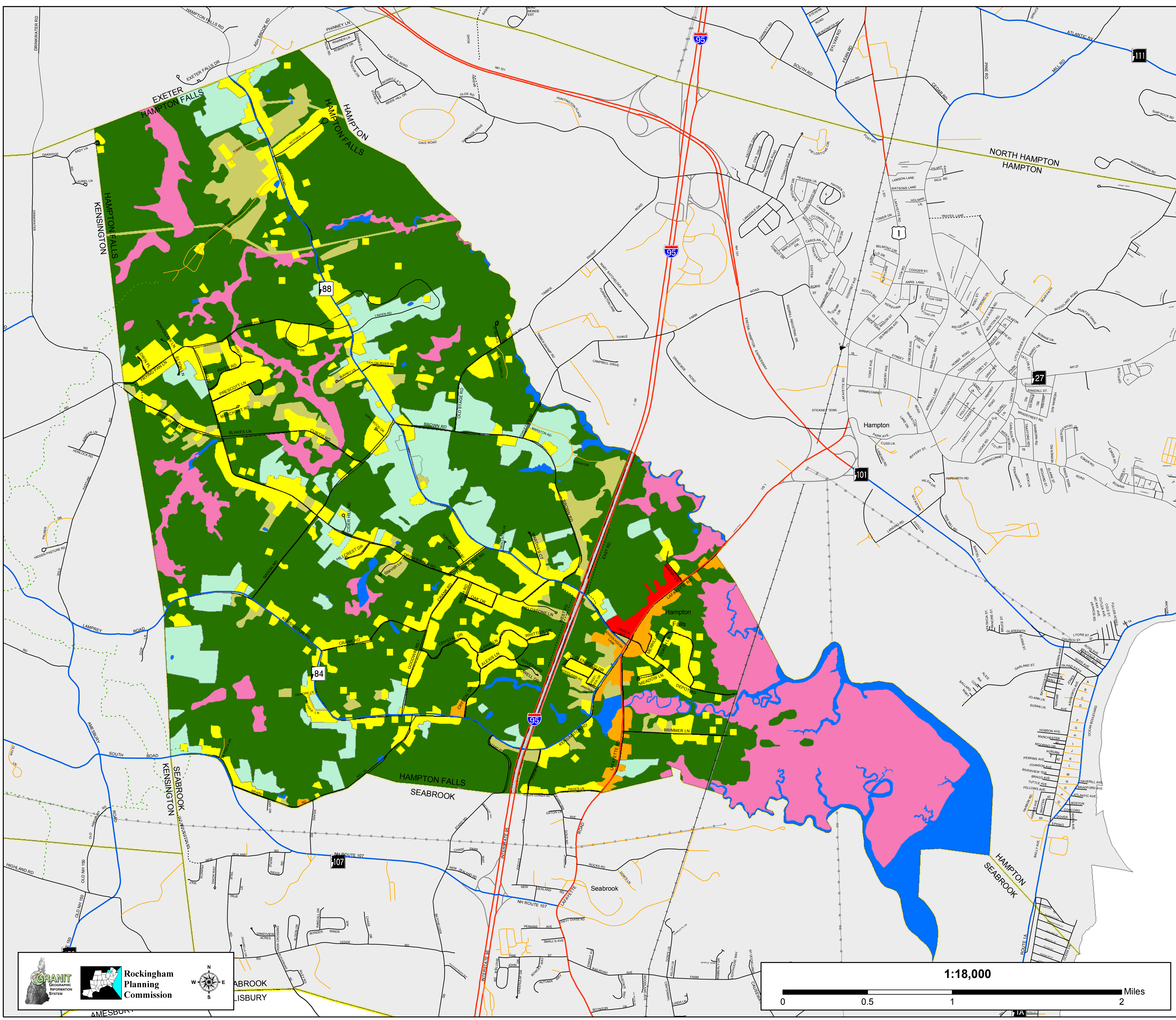
February 2006

Portsmouth Land Use (1998)

- Residential
- Industrial/Commercial
- Mixed Urban
- Transportation/Roads
- Railroads
- Auxiliary Transportation
- Playing Fields/Recreational
- Forested
- Water
- Open Wetlands
- Open Land

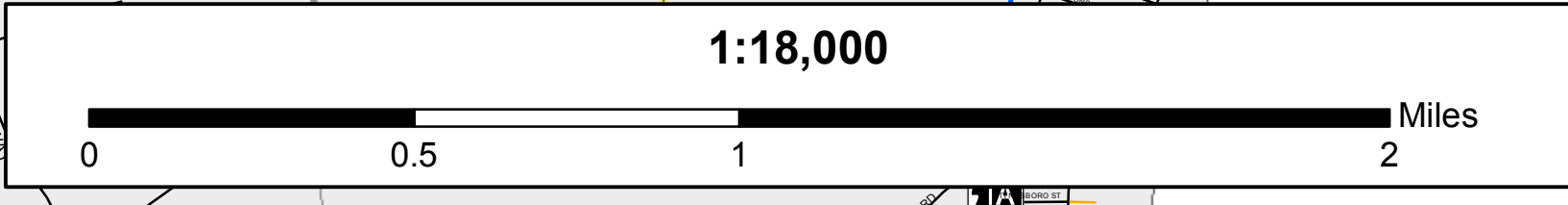
BASE FEATURES

- | | | |
|---|--|---|
| Roads
<ul style="list-style-type: none"> State Primary System State Secondary System Local Roads (Municipal or Private) Unmaintained Roads (Class VI) Trail | <ul style="list-style-type: none"> Railroads Abandoned Railroads Major Powerlines Major Pipelines Town Boundary | Surface Water Features
<ul style="list-style-type: none"> Stream, Shoreline Intermittent Stream Apparent Wetland Limit Other Water Feature Bodies of Water |
|---|--|---|



Rockingham Planning Commission

Seabrook
Amesbury



Land Use Data was acquired from GRANIT (The New Hampshire Geographically Referenced Analysis and Information Transfer System).

Land Use data is from Rockingham County, 1998. The data was developed through interpretation of 1:12,000 scale black and white digital orthophoto quadrangles from the United States Geologic Survey. For more information on this data layer please visit <http://granit.sr.unh.edu>

Base data (town boundaries, hydrography, roads, railroads and utility lines) are taken from the USGS Digital Line Graph data, 1:24,000, as archived in the GRANIT database at Complex Systems Research Center, Institute for the study of Earth, Oceans and Space, University of New Hampshire, Durham, NH; 1992 -1999. Roads have been updated from work done by Rockingham Planning Commission and NH Department of Transportation. Partial updates have been completed through 2000.