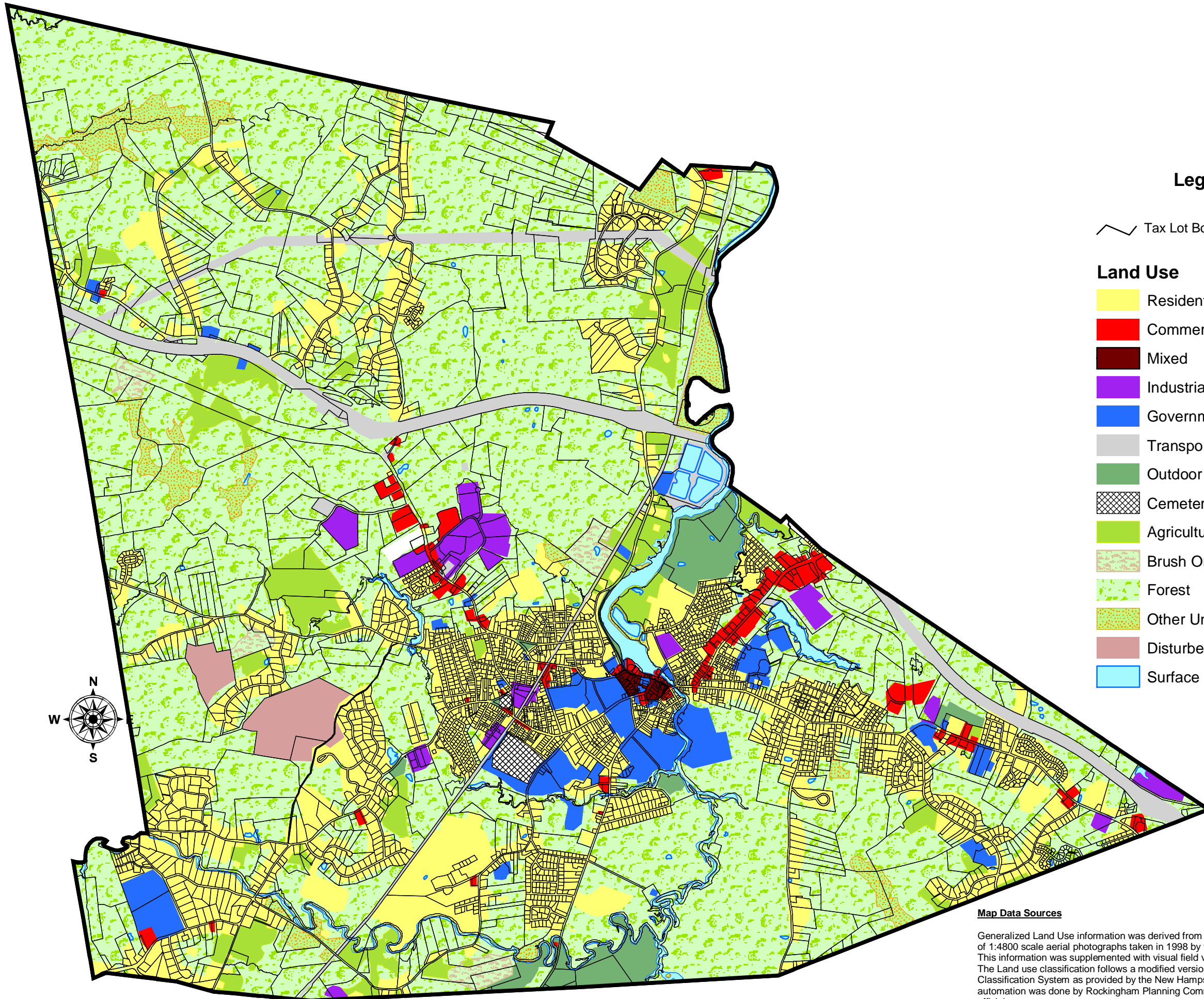


**2002  
Existing Land Use  
Town of Exeter  
2002 Master Plan**

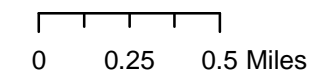
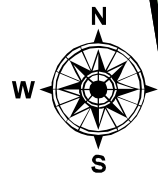


**Legend**

Tax Lot Boundary

**Land Use**

- Residential
- Commercial
- Mixed
- Industrial
- Government, Educational & Institutional
- Transportation, Communication & Utilities
- Outdoor Recreation
- Cemeteries
- Agricultural Land Or Other Open Non-Forested Land
- Brush Or Transitions Between Open And Forested
- Forest
- Other Undeveloped Lands
- Disturbed Land -Construction Sites
- Surface Water



**Map Data Sources**

Generalized Land Use information was derived from interpretation of digital orthophoto images of 1:4800 scale aerial photographs taken in 1998 by the Agricultural Stabilization and Conservation Service. This information was supplemented with visual field verification to update the map layer to April 2002. The Land use classification follows a modified version of the New Hampshire Land Use/Land Cover Classification System as provided by the New Hampshire Office of State Planning. Interpretation and automation was done by Rockingham Planning Commission with assistance from municipal staff and officials.

Town of Exeter Composite Tax Map was provided by Cartographic Associates Inc. in January 2002.

**June 2002**

