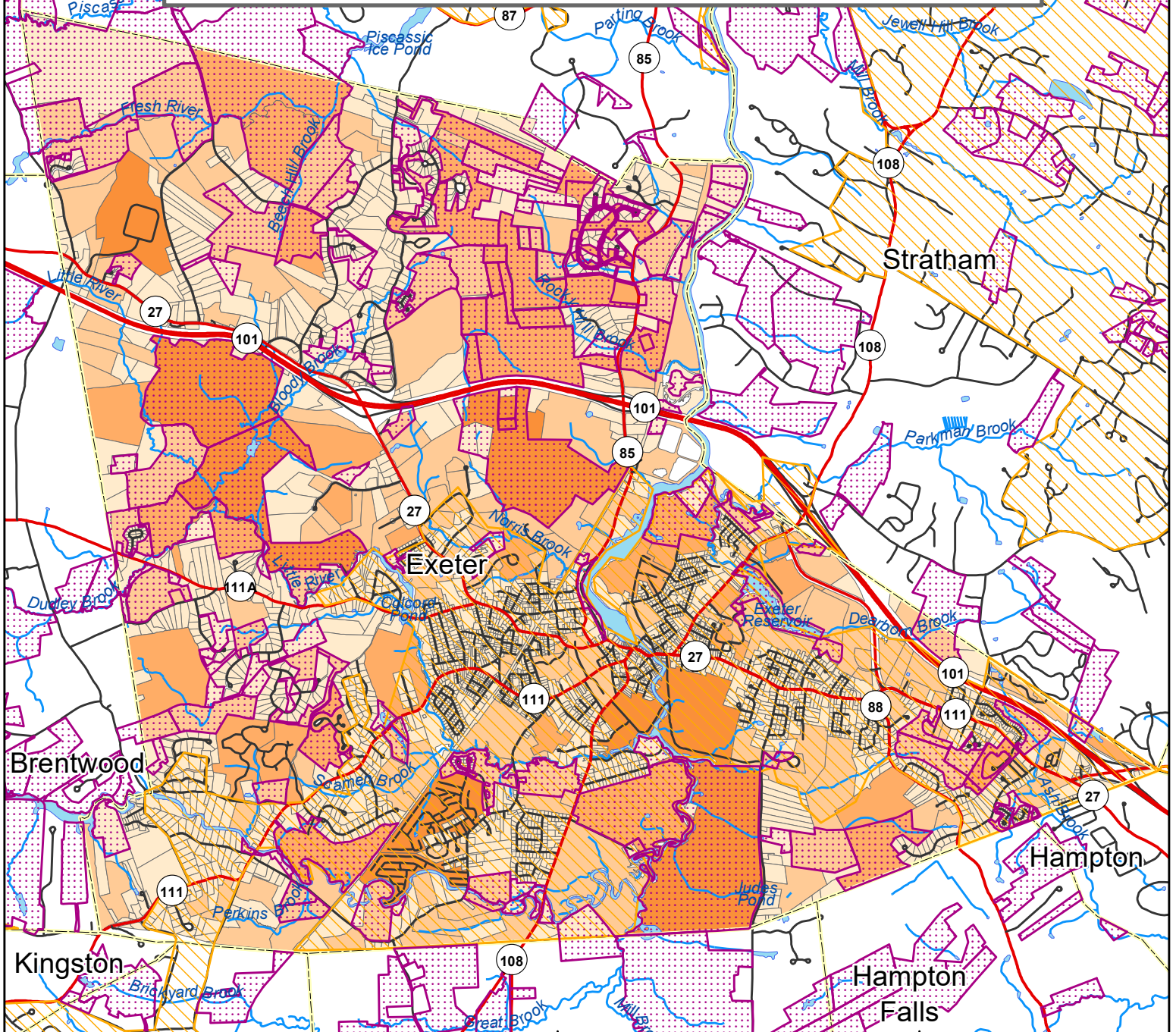
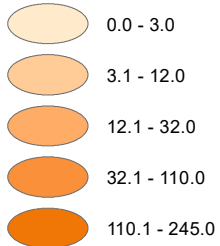


Pollutant Load Analysis in the Coastal Watershed Town of Exeter Pollutant Load by Parcel: Total Phosphorous

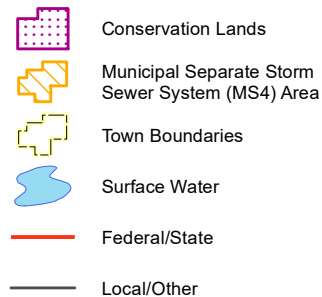
This map displays the results of applying EPA Region I Pollutant Load Export Rates (PLERs) to soils, land use, and impervious cover data, and aggregating the results by parcel.



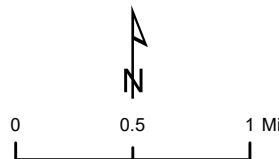
Phosphorous (lbs/year)



Base Map



Total, Town of Exeter: 4,081.6 lbs/year



Data Sources:

Parcels - NH Dept. of Revenue Administration, 2019
Soils - Natural Resources Conservation Service, 2018
Land Use - Regional Planning Commissions, 2015 (Rockingham and Strafford); 2010 (Southern)
Impervious Surfaces - NH GRANIT, 2015
Conservation Lands - NH GRANIT, 2019
Municipal Separate Storm Sewer System (MS4) Area - US Census, 2012

Funding for this project was provided in part by a Watershed Assistance Grant from the NH Department of Environmental Services with Clean Water Act Section 604(b) funds from the U.S. Environmental Protection Agency.

