

# STREAM BUFFER CHARACTERIZATION STUDY

## Town of Sandown, NH

### Project Description:

The Complex Systems Research Center at the University of New Hampshire conducted a characterization of 2<sup>nd</sup> order and higher streams within the Piscataqua/Coastal Basin of coastal New Hampshire. Existing GIS and remote sensing data were used to map a suite of anthropogenic factors, including land use, impervious surface coverage, and transportation infrastructure, within standard buffers around each stream segment. These factors were then analyzed to produce a categorical indicator representing the status of each stream.

Processing began using the GRANIT hydrography data to identify perennial streams/rivers of order 2 or higher. Each stream segment was buffered by 150' to support habitat quality analyses and by 300' to support habitat analysis, and the buffers were then combined with land use data derived from 1998 USGS Digital Orthophotographs (DOOs). Finally, the buffer/land use composites were categorized

based on the degree to which each buffer was impacted by human activity.

Specifically, the buffer categories reflect the percent of land area within each buffer mapped as either developed, transportation, or agriculture, and include:

Category	Decision Rule
Intact	<10% impacted
Mostly Intact	10-25% impacted
Somewhat Modified	25-50% impacted
Altered	>50% impacted

The buffer characterizations are depicted on the map and summarized in the tables below. The map also displays the 300' buffers based on the degree of imperviousness in 2005, and the townwide conservation lands data. Impervious surface coverage by town for 1990, 2000, and 2005, as well as conservation lands acreage by town, are also reported.

### Stream Buffer Characterization

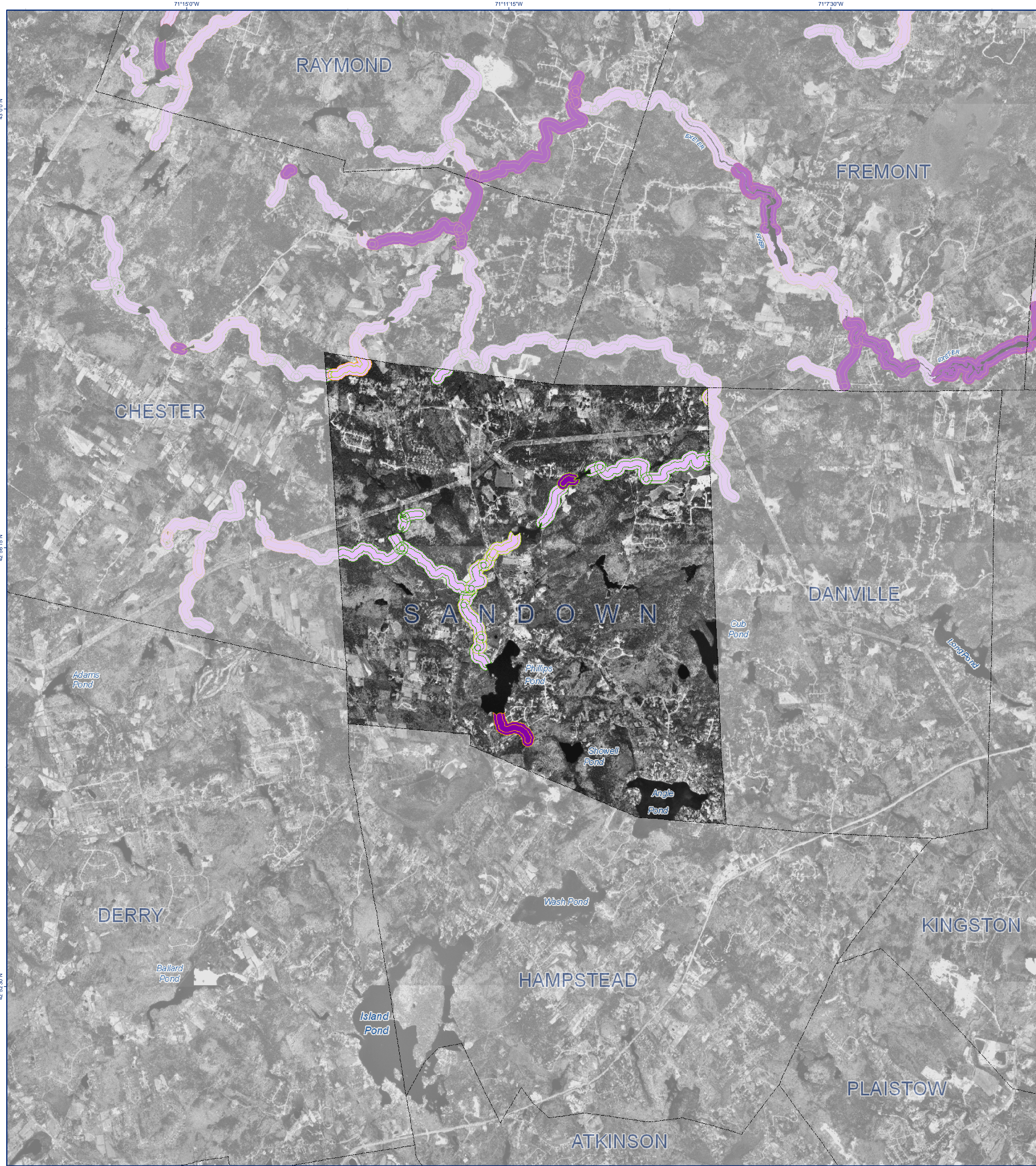
- Intact
- Mostly Intact
- Somewhat Modified
- Altered

### Percent Impervious by 300-ft Buffer Segment

- Less Than 10%
- Greater Than 10%

### Conservation Lands

- Level 1, 2, or 2A



### 150-ft Buffer Stream Characterization Data Summary

Town Name	Total Acres	Land Area		Surface Water Area		150' Buffer Area						% of Land
		Acres	% of Town	Acres	% of Town	Intact	Mostly Intact	Somewhat Modified	Altered	% of Land		
Alton	53231	40629	76.3	12602	23.7	0	0.0	0.0	0.0	0.0	0.0	0.0
Barrington	31117	29719	95.5	1399	4.5	1580	5.3	4.2	2.1	0.0	0.1	0.0
Brenwood	10863	10741	98.9	122	1.1	481	4.5	2.2	2.1	0.0	0.1	0.0
Brookfield	14880	14593	98.1	287	1.9	323	2.2	2.2	0.0	0.0	0.0	0.0
Candia	19557	19340	98.9	217	1.1	489	2.5	2.1	0.2	0.2	0.0	0.0
Chester	16719	16618	99.4	100	0.6	379	3.5	2.4	0.9	0.0	0.0	0.0
Danville	7569	7439	98.3	131	1.7	51	0.7	0.3	0.4	0.0	0.0	0.0
Deerfield	32348	32584	97.7	764	2.3	1038	3.2	2.5	0.5	0.2	0.0	0.0
Derry	23226	22880	97.7	545	2.3	0	0.0	0.0	0.0	0.0	0.0	0.0
Dover	16592	17100	92.0	1492	8.0	1086	6.3	2.3	2.0	1.3	0.7	0.4
Durham	15382	14306	93.2	1548	9.8	690	3.8	1.2	1.2	0.7	0.4	0.4
East Kingston	6381	6318	99.0	63	1.0	670	9.3	2.3	0.7	0.4	0.0	0.0
Epping	16776	16470	98.2	306	1.8	1011	6.1	3.7	1.8	0.6	0.0	0.0
Greenville	12927	12886	98.1	241	1.9	768	6.1	3.3	1.6	1.2	0.0	0.0
Farmington	23640	23218	98.2	422	1.8	773	3.3	1.6	1.1	0.3	0.3	0.3
Fremont	11442	11035	96.5	407	3.6	565	5.1	2.2	1.7	1.0	0.2	0.2
Greenland	8524	8781	79.5	1743	20.5	329	4.9	2.1	2.2	0.2	0.3	0.3
Hampstead	9014	8543	94.8	471	5.2	0	0.0	0.0	0.0	0.0	0.0	0.0
Hampton	9073	8287	91.3	786	8.7	966	11.7	9.8	0.7	0.7	0.4	0.4
Hampton Falls	8078	7719	95.6	359	4.4	774	10.0	8.9	1.0	0.2	0.0	0.0
Kensington	7668	7635	99.6	32	0.4	370	4.9	3.2	0.7	0.7	0.2	0.2
Kingston	13450	12494	92.9	957	7.1	224	1.8	1.5	0.1	0.1	0.1	0.1
Lee	12927	12886	98.1	241	1.9	768	6.1	3.3	1.6	1.2	0.0	0.0
Madbury	7799	7400	94.9	400	5.1	387	5.2	3.2	1.9	0.0	0.0	0.0
Middleton	11843	11559	97.6	284	2.4	407	3.5	3.0	0.5	0.0	0.1	0.1
Milton	21936	21089	96.1	847	3.9	853	4.0	3.0	0.6	0.4	0.0	0.0
New Castle	1348	506	37.6	841	62.4	146	28.7	3.3	0.0	0.0	25.3	3.0
New Durham	26054	26345	93.9	1709	6.1	323	1.2	1.1	0.1	0.0	0.0	0.0
Newfield	4647	4541	97.7	106	2.3	293	6.5	4.4	1.4	0.4	0.6	0.6
Newington	7917	5216	65.9	2700	34.1	178	3.4	0.4	0.5	1.3	1.1	1.1
Newmarket	9080	8038	88.5	1043	11.5	458	5.7	2.8	1.2	1.1	0.7	0.7
North Hampton	8923	8962	99.3	61	0.7	490	5.5	3.9	1.3	0.9	0.0	0.0
Northwood	16357	17974	92.9	1383	7.1	285	1.6	1.4	0.1	0.1	0.0	0.0
Nottingham	30997	29882	96.4	1115	3.6	1409	4.7	4.1	0.5	0.0	0.1	0.1
Pittsfield	15559	15190	97.6	369	2.4	0	0.0	0.0	0.0	0.0	0.0	0.0
Portsmouth	10763	10002	92.9	761	7.1	431	4.3	1.8	0.2	0.5	1.9	1.9
Raymond	18944	18459	97.4	485	2.6	1092	5.9	2.6	2.3	0.9	0.1	0.1
Rochester	29081	28321	97.4	760	2.6	1569	5.5	1.8	1.4	0.1	0.1	0.1
Rollinsford	4843	4682	96.7	161	3.3	296	6.3	3.2	0.0	2.8	0.3	0.3
Rye	8406	7998	95.1	408	4.9	554	6.9	4.7	1.1	0.5	0.7	0.7
Sandown	6230	8888	96.3	343	3.7	599	6.7	2.8	1.7	0.8	0.0	0.0
Seabrook	6161	5664	91.9	497	8.1	721	12.7	10.4	0.5	1.4	0.4	0.4
Somerset	6398	6219	97.2	179	2.8	280	4.5	2.1	0.4	1.3	0.8	0.8
South Hampton	5147	5044	98.0	102	2.0	0	0.0	0.0	0.0	0.0	0.0	0.0
Strafford	32779	31151	95.0	1628	5.0	691	2.2	2.1	0.0	0.0	0.0	0.0
Strafford	32779	31151	95.0	1628	5.0	691	2.2	2.1	0.0	0.0	0.0	0.0
Strafford	32779	31151	95.0	1628	5.0	691	2.2	2.1	0.0	0.0	0.0	0.0
Strafford	32779	31151	95.0	1628	5.0	691	2.2	2.1	0.0	0.0	0.0	0.0
Strafford	32779	31151	95.0	1628	5.0	691	2.2	2.1	0.0	0.0	0.0	0.0
Wafleboro	28717	25264	88.0	3453	12.0	948	3.8	2.2	0.8	0.6	0.2	0.2
Wolfeboro	37406	30693	82.1	6713	17.9	0	0.0	0.0	0.0	0.0	0.0	0.0
<b>Total</b>	<b>759673</b>	<b>708144</b>	<b>93.2</b>	<b>51529</b>	<b>6.8</b>	<b>25279</b>	<b>3.6</b>	<b>2.7</b>	<b>0.7</b>	<b>0.4</b>	<b>0.2</b>	<b>0.2</b>

### Townwide Conservation Lands Data Summary

Town Name	Acres	% of Land	
		1990	2005
Alton	3766	7.1	9.3
Barrington	2687	8.6	9.0
Brenwood	1387	12.8	12.9
Brookfield	1817	12.2	12.5
Candia	2008	10.3	10.4
Chester	1312	7.8	7.8
Danville	540	7.1	7.3
Deerfield	5882	16.7	17.1
Derry	1119	4.8	4.8
Dover	1529	8.2	8.9
Durham	4321	27.3	30.2
East Kingston	670	10.5	10.6
Epping	1271	7.6	7.7
Greenville	3486	27.3	27.8
Farmington	1242	5.3	5.3
Fremont	181	1.6	1.6
Greenland	883	10.5	13.2
Hampstead	1506	16.7	17.6
Hampton	408	4.5	4.9
Hampton Falls	633	7.8	8.2
Kensington	1549	20.2	20.3
Kingston	1376	10.2	11.0
Lee	728	5.7	5.7
Madbury	1328	17.0	17.9
Middleton	488	4.1	4.2
Milton	2553	11.6	12.1
New Castle	92	6.8	18.1
New Durham	1751	6.2	6.6
Newfield	753	16.2	16.6
Newington	1307	16.5	25.1
Newmarket	1331	14.7	16.6
North Hampton	709	8.0	8.0
Northwood	2381	12.3	13.2
Nottingham	5880	18.9	19.6
Pittsfield	728	4.7	4.7
Portsmouth	1099	10.2	11.0
Raymond	972	5.1	5.3
Rochester	151	1.5	1.5
Rollinsford	409	8.4	8.7
Rye	1488	17.7	18.6
Sandown	470	5.1	5.3
Seabrook	447	7.3	7.9
Somerset	221	3.5	3.6
South Hampton	80	2.4	5.6
Strafford	5261	16.1	16.9
Strafford	1023	10.3	10.6
Wafleboro	390	1.4	1.5
Wolfeboro	2248	6.0	7.3
<b>Total</b>	<b>75596</b>	<b>10.0</b>	<b>10.7</b>

### 300-ft Buffer Stream Characterization Data Summary

Town Name	Total Acres	Land Area		Surface Water Area		300' Buffer Area						% of Land
		Acres	% of Town	Acres	% of Town	Intact	Mostly Intact	Modified	Altered	% of Land		
Alton	53231	40629	76.3	12602	23.7	0	0.0	0.0	0.0	0.0	0.0	0.0
Barrington	31117	29719	95.5	1399	4.5	3210	10.3	7.2	2.6	4.0	1.3	4.7
Brenwood	10863	10741	98.9	122	1.1	558	6.9	2.2	5.8	0.5	0.4	0.4
Brookfield	14880	14593	98.1	287	1.9	647	4.4	4.1	0.3	0.0	0.0	0.0
Candia	19557	19340	98.9	217	1.1	1035	5.4	4.2	0.4	0.7	0.0	0.0
Chester	16719	16618	99.4	100	0.6	1205	7.3	3.4	2.3	1.5	0.0	0.0
Danville	7569	7439	98.3	131	1.7	88	1.3	0.6	0.7	0.0	0.0	0.0
Deerfield	32348	32584	97.7	764	2.3	2161	6.6	4.0	1.0	0.0	0.0	0.0
Derry	23226	22880	97.7	545	2.3	0	0.0	0.0	0.0	0.0	0.0	0.0
Dover	16592	17100	92.0	1492	8.0	2139	12.5	3.0	3.3	4.7	1.5	1.5
Durham	15382	14306	93.2	1548	9.8	1377	9.6	1.5	1.7	4.9	1.5	1.5
East Kingston	6381	6318	99.0	63	1.0	416	6.6	2.4	2.1	1.2	0.8	0.8
Epping	16776	16470	98.2	306	1.8	1980	12.0	4.0	5.3	2.4	0.3	0.3
Greenville	12927	12886	98.1	241	1.9	1037	15.5	6.3	2.5	4.3	0.7	0.7
Farmington	23640	23218	98.2	422	1.8	1548	6.7	2.5	2.0	1.3	0.8	0.8
Fremont	11442	11035	96.5	407	3.6	1127	10.2	5.3	1.6	2.1	1.2	1.2
Greenland	8524	8781	79.5	1743	20.5	670	9.9	2.0	5.0	1.6	0.8	0.8
Hampstead	9014	8543	94.8	471	5.2	0	0.0	0.0	0.0	0.0	0.0	0.0
Hampton	9073	8287	91.3	786	8.7	2242	27.1	21.7	2.4	1.5	1.5	1.5
Hampton Falls	8078	7719	95.6	359	4.4	1352	22.7	18.9	4.0	1.3	0.1	0.1
Kensington	7668	7635	99.6	32	0.4	815	10.7	6.1	0.8	3.7	0.1	0.1
Kingston	13450	12494	92.9	957	7							