



Maps and data sets are not guaranteed to be free from errors and omissions. Data is in a constant state of update and correction by various groups and agencies. Information displayed on this map is the best available at the time of publication.

# 2025 Nodal Reference Bookmap

## LEGEND



NHDOT will accept crash locations based on the State of NH Uniform Police Traffic Accident Report.

Crash occurred on:

**Option 1**     Street Address  
                   123 Main Street

**Option 2**     Route No and/or     Distance from             NESW             Intesecting Road, Bridge,  
                   Street name             Intersecting Street                                     Town/County line  
                   Main Street                     500                     E                     Oak Street

**Option 3**     First Node                     Distance from First Node                     Second Node  
                   515                                     212                                     632

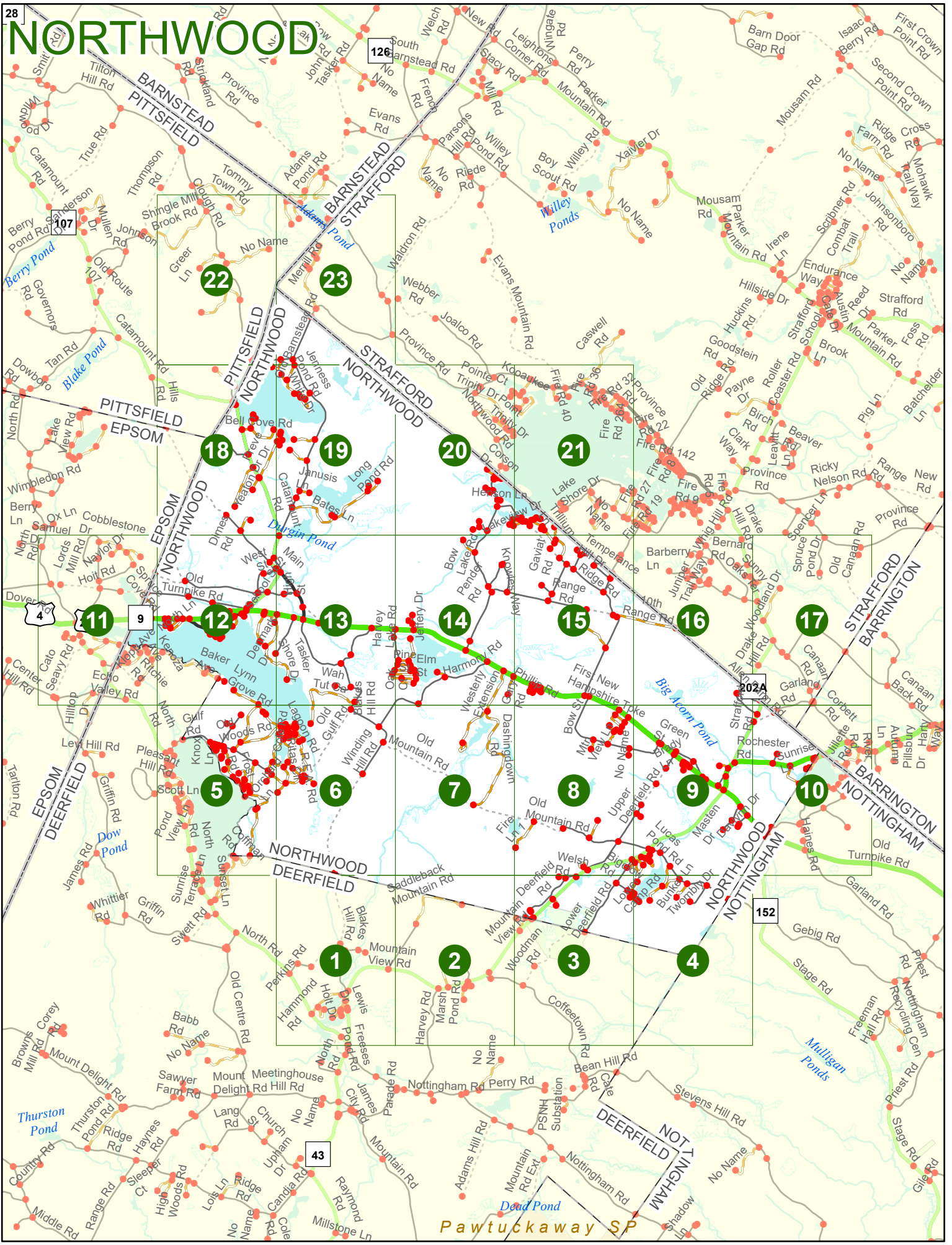
**Option 4**     Route No and/or             Mile Marker on Interstate Only             NESW             Mile (Marker)  
                   Street name  
                   189S                                     700 feet                                     S                     36.8

**Option 3 – Example**

Street Name                     Loudon Road  
First Node                             803  
Distance from First Node             318 Ft  
Second Node                             813



# NORTHWOOD



# NORTHWOOD

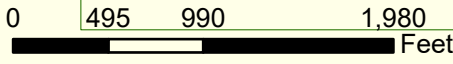
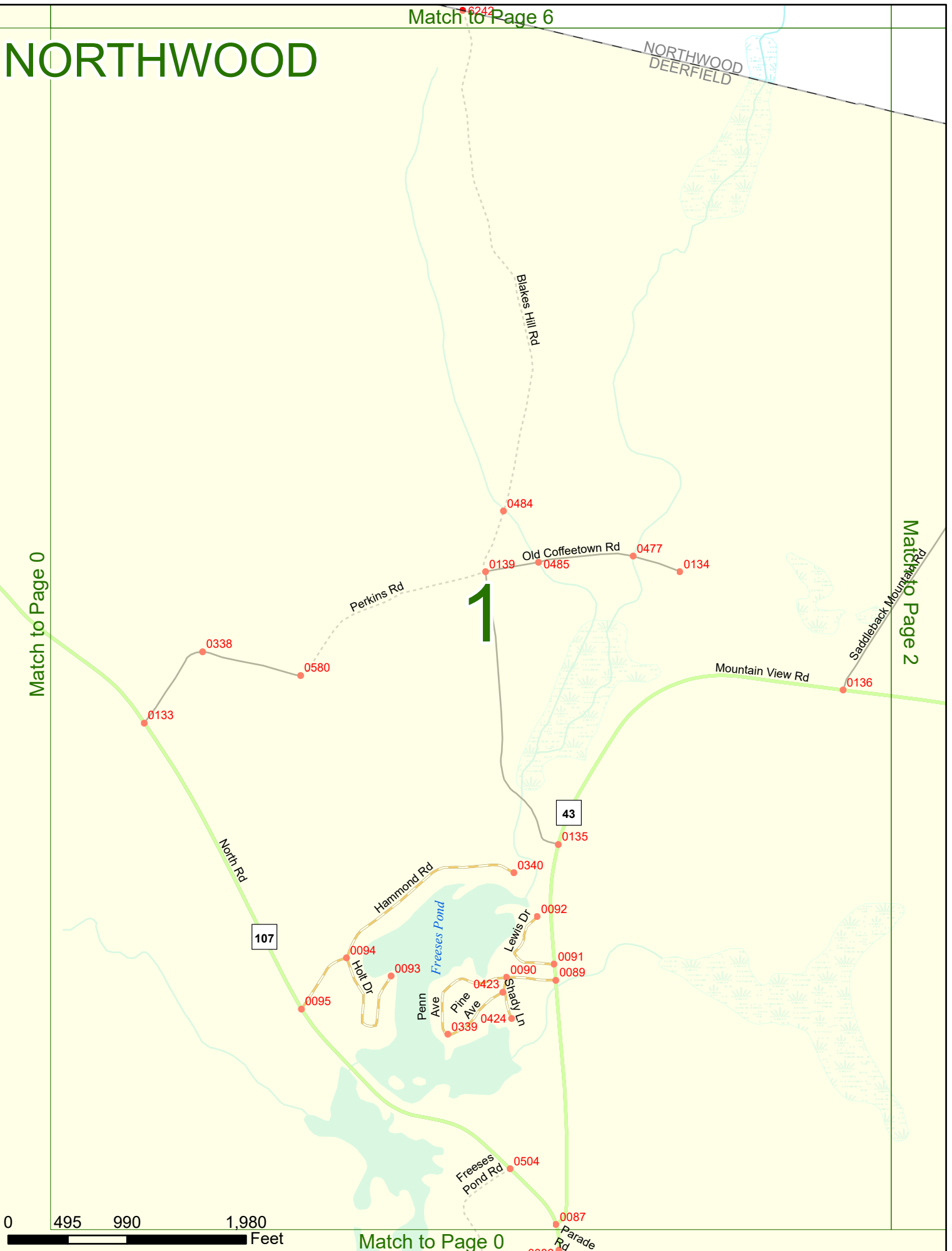
Match to Page 6

NORTHWOOD  
DEERFIELD

Match to Page 0

Match to Page 2

1



Match to Page 0

# NORTHWOOD

Saddleback Mountain Rd  
NORTHWOOD  
DEERFIELD 0613

0448  
Old Deerfield Rd  
0447

Match to Page 1

Match to Page 3

## 2

0136

0138

0422

0581

Mountain View Rd

Pasture Rd  
Summer

Wild Turkey Rd

Mountain View Rd

0146

0147

Coffeetown Rd

43

0144

0145

0420

0419

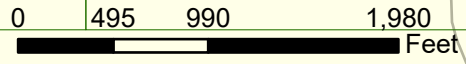
0143

0421

Marsh  
Pond Rd

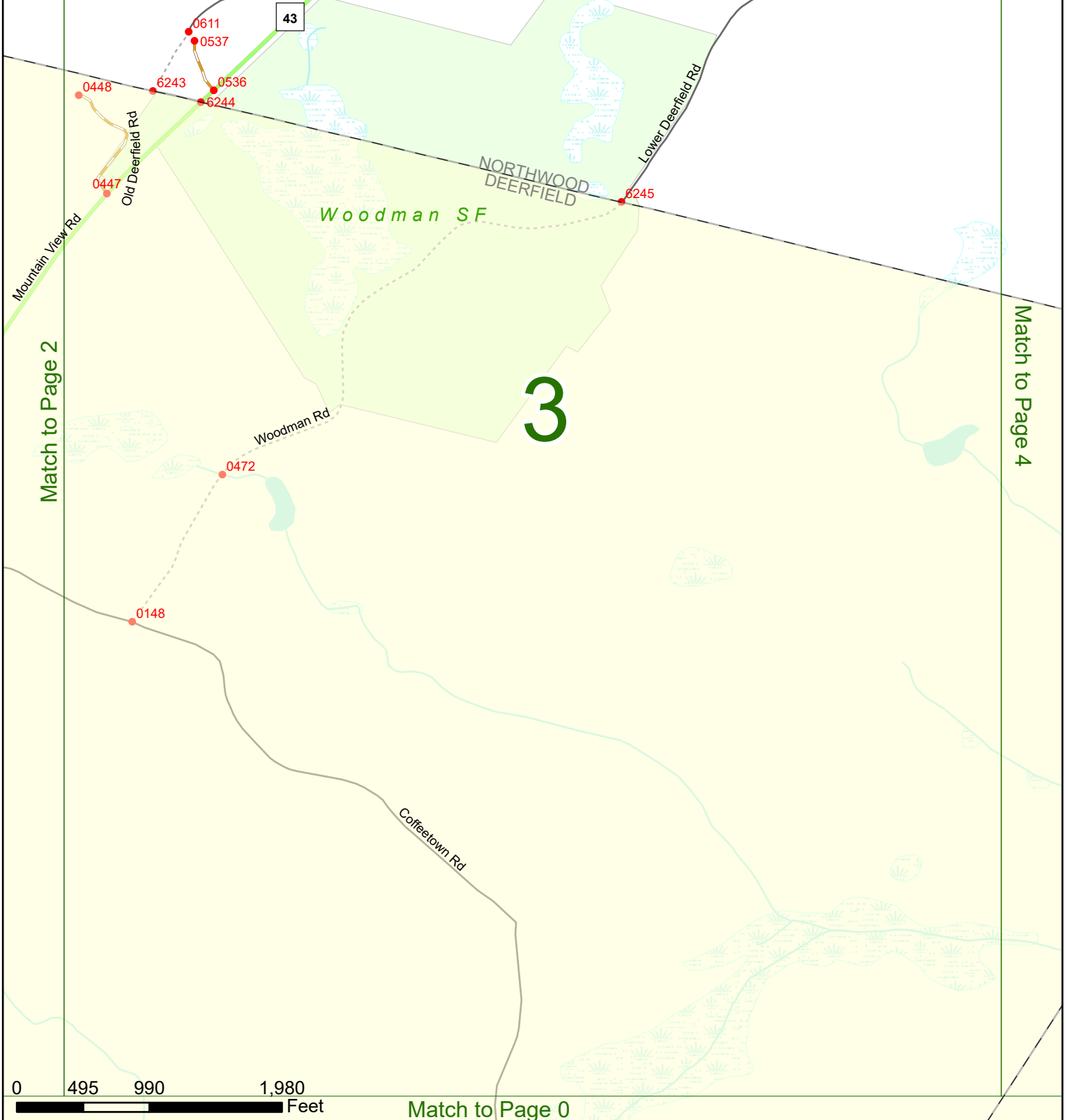
0341

Harvey Rd



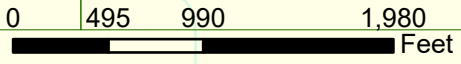
# NORTHWOOD

Match to Page 8



Match to Page 2

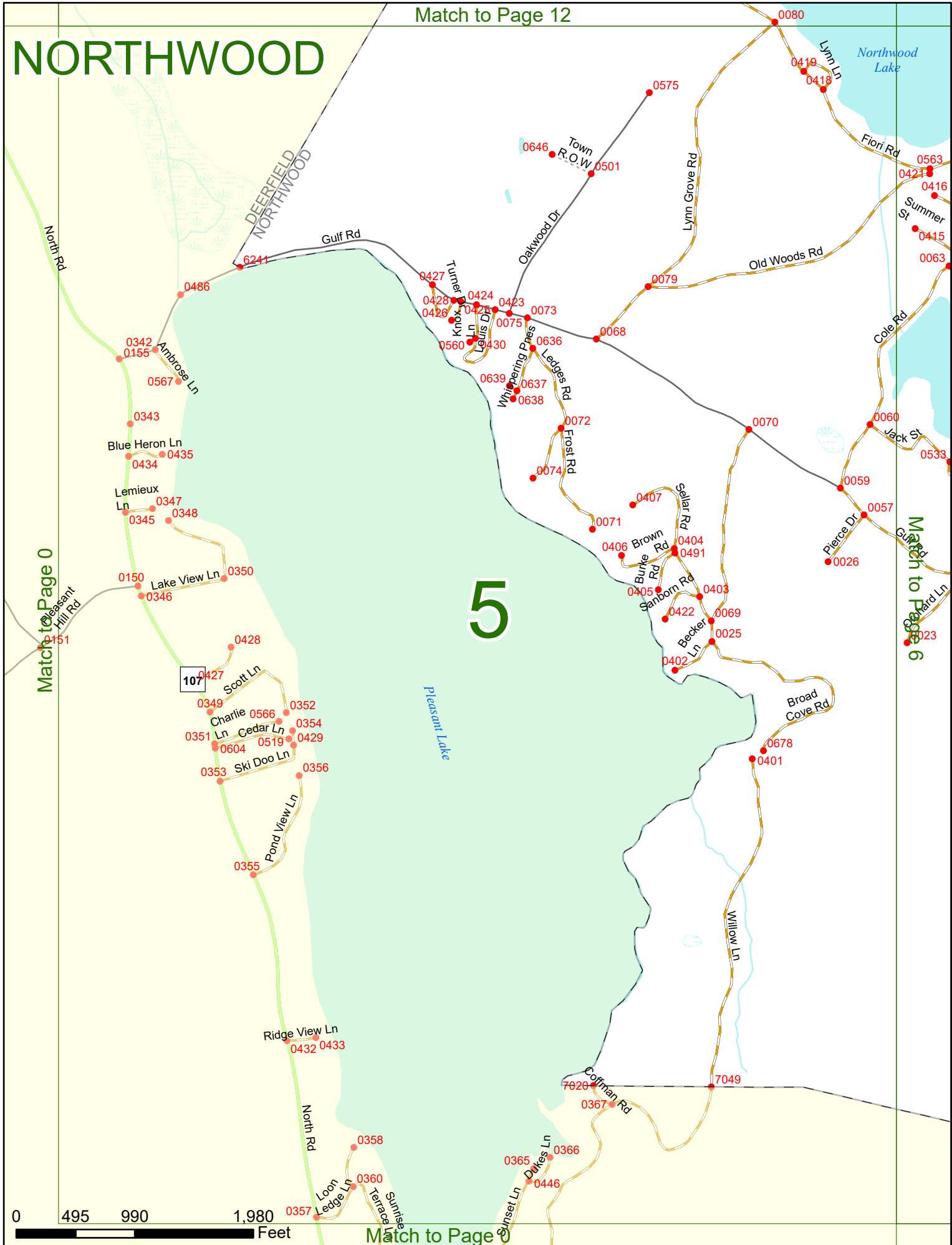
Match to Page 4



Match to Page 0



# NORTHWOOD



# 5

Match to Page 0

Match to Page 6

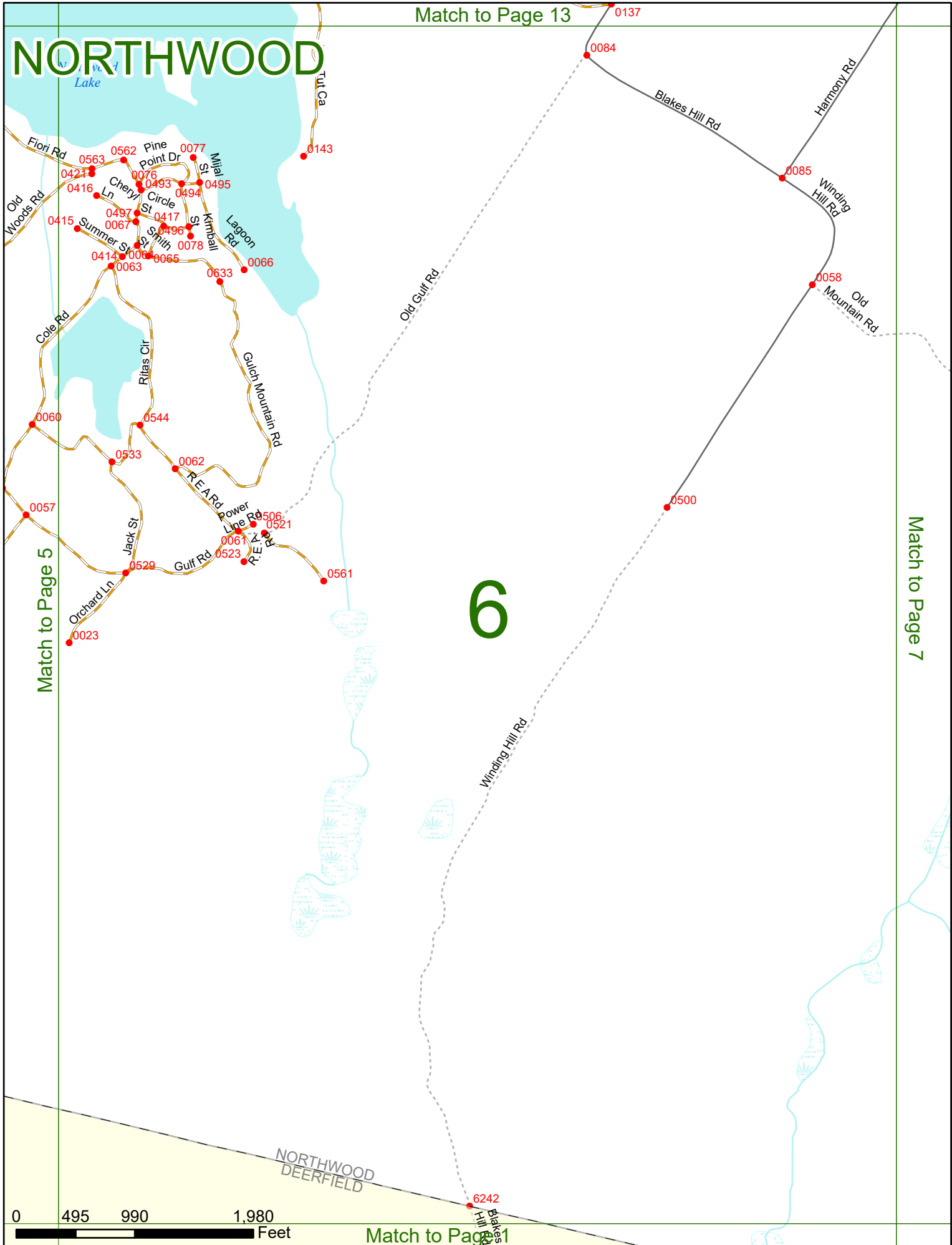
0 495 990 1,980 Feet

Match to Page 0



Match to Page 13

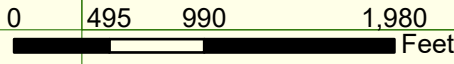
# NORTHWOOD



Match to Page 5

Match to Page 7

# 6



Match to Page 1

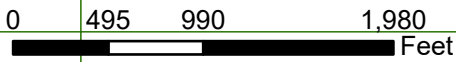
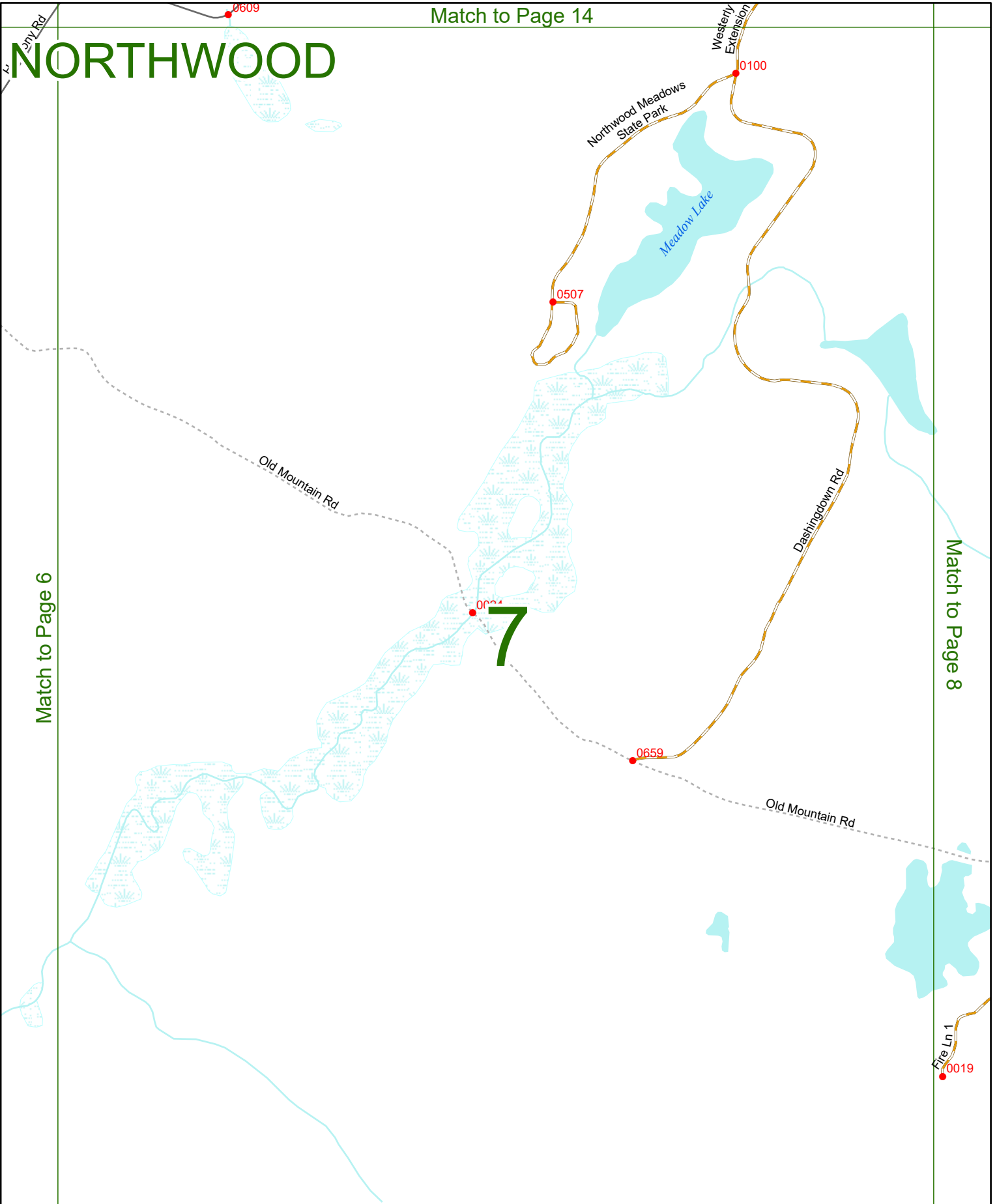
NORTHWOOD  
DEERFIELD

# NORTHWOOD

Match to Page 14

Match to Page 6

Match to Page 8



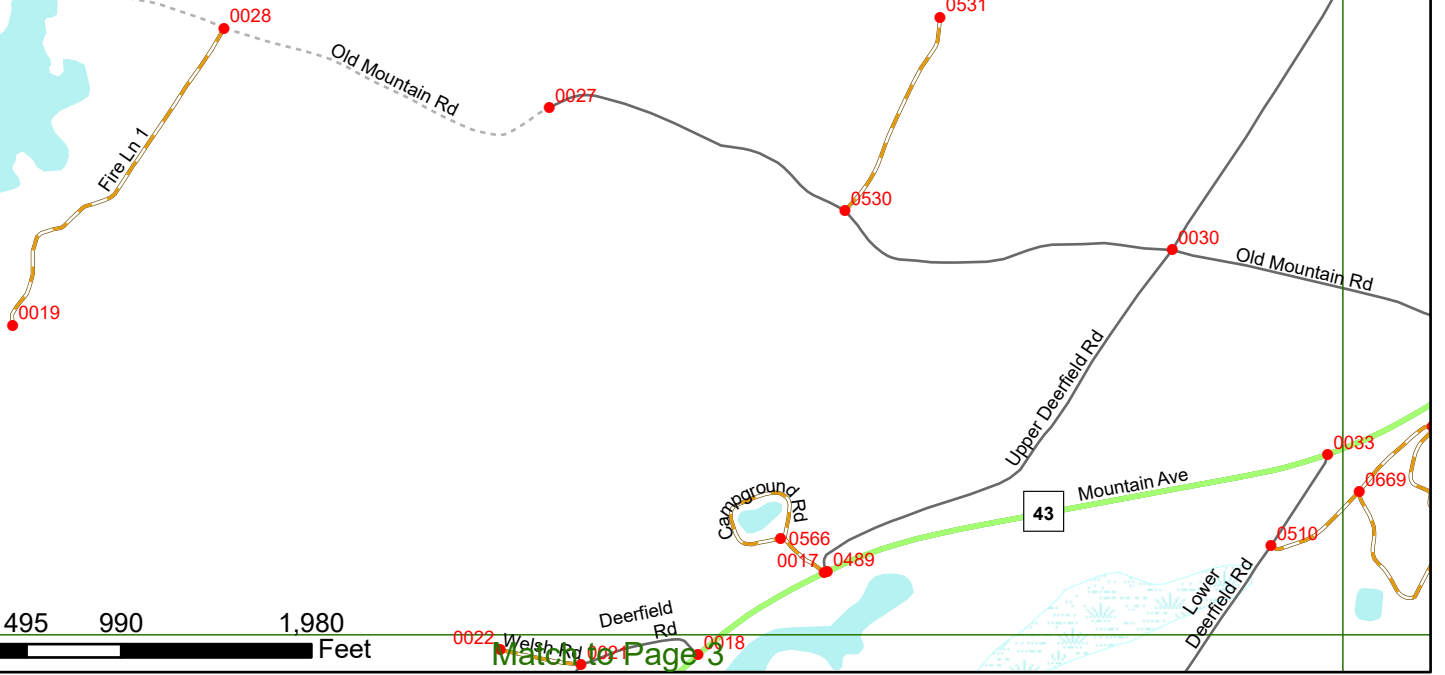
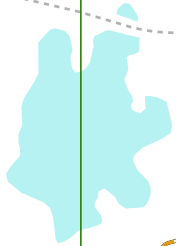
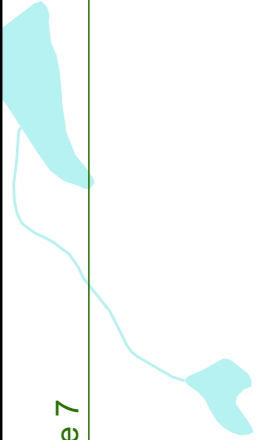
Match to Page 2

# NORTHWOOD

Match to Page 7

Match to Page 9

# 8





# NORTHWOOD

Match to Page 17

Garland Rd

202A

Trudembach Rd

STRAFFORD NORTHWOOD

STRAFFORD BARRINGTON

Corbett Rd

BARRINGTON NORTHWOOD

Franklin Pierce Hwy

0235 0234

0230

0233

0231

0232 1603

0039

0041

0040

0408

0408

0408

0408

0408

0408

0408

0408

0408

0408

0408

0408

0408

0408

0408

0408

0408

0408

0408

0408

0408

0408

0408

0408

0408

0408

0408

0408

0408

0408

0408

# 10

0519

0519

0519

0519

0519

0519

0519

0519

0519

0519

0519

0519

0519

0519

0519

0519

0519

0519

0519

0519

0519

0519

0519

0519

0519

0519

0519

0519

0519

0519

0519

0519

0519

0519

0519

0519

0519

0519

0519

0519

0519

0519

0519

0519

0519

0519

0519

0519

0519

0519

0519

0519

0519

0519

0519

0519

0519

0519

0519

0519

0519

0519

0519

0519

0519

0519

0519

0519

0519

0519

0519

0519

0519

0519

0519

0519

0519

0519

0519

0519

0519

0519

0519

0519

0519

0519

0519

0519

0519

0519

0519

0519

0519

0519

0519

0519

0519

0519

0519

0519

0519

0519

0519

0519

0519

0519

0519

0519

0519

0519

0519

0519

0519

0519

0519

0519

0519

0519

0519

0519

0519

0519

0519

0519

0519

0519

0519

0519

0519

0519

0519

0519

0519

0519

0519

0519

0519

0519

0519

0519

0519

0519

0519

0519

0519

0519

0519

0519

0519

0519

0519

0519

0519

0519

0519

0519

0519

0519

0519

0519

0519

0519

0519

0519

0519

0519

0519

0519

0519

0519

0519

0519

0519

0519

0519

0519

0519

0519

0519

0519

0519

0519

0519

0519

0519

0519

0519

0519

0519

0519

0519

0519

0519

0519

0519

0519

0519

0519

0519

0519

0519

0519

0519

0519

0519

0519

0519

0519

0519

0519

0519

0519

0519

0519

0519

0519

0519

0519

0519

0519

0519

0519

0519

0519

0519

0519

0519

0519

0519

0519

0519

0519

0519

0519

0519

0519

0519

0519

0519

0519

0519

0519

0519

0519

0519

0519

0519

0519

0519

0519

0519

0519

0519

0519

0519

0519

0519

0519

0519

0519

0519

0519

0519

0519

0519

0519

0519

0519

0519

0519

0519

0519

0519

0519

0519

0519

0519

0519

0519

0519

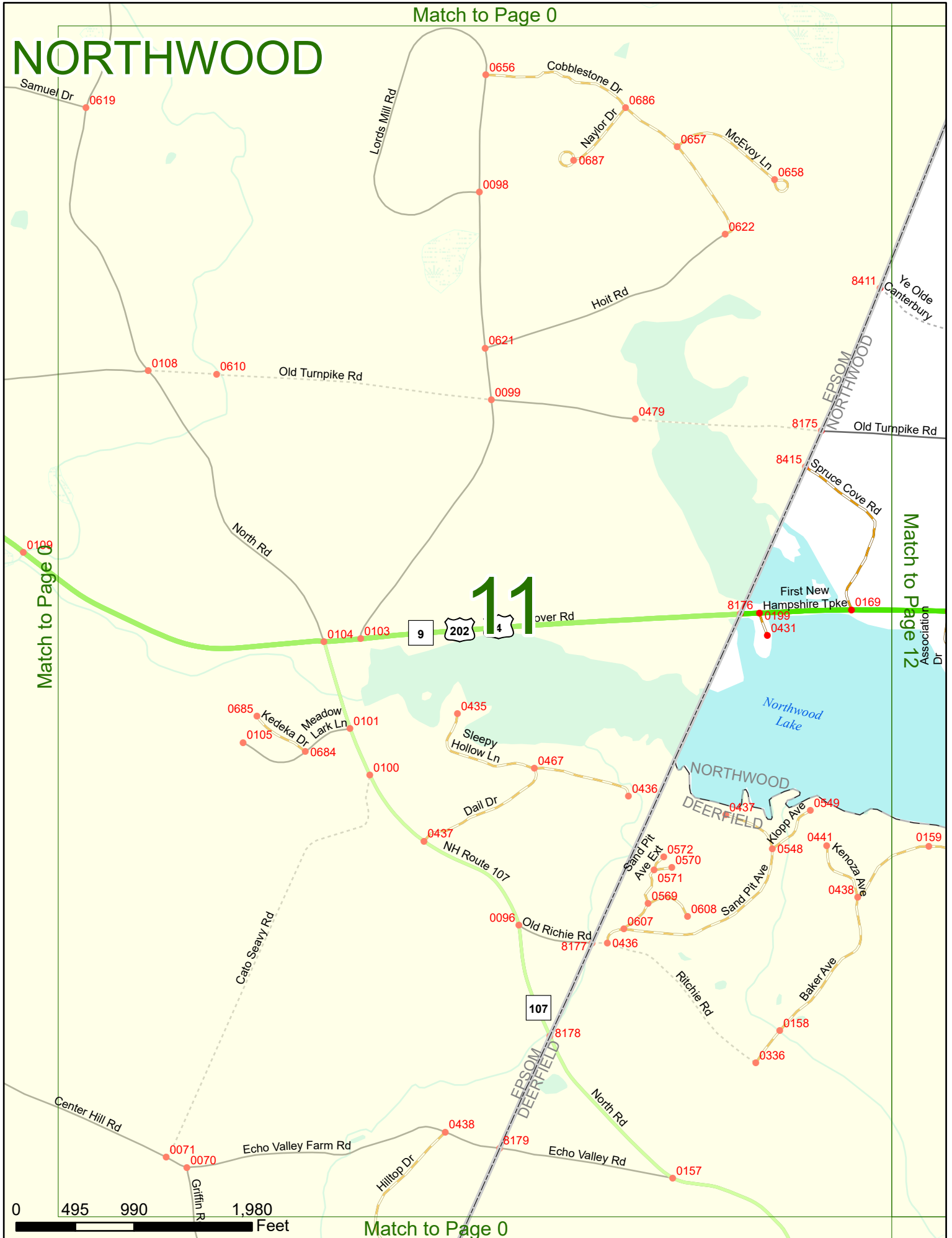
0519

0519

0519

0519

# NORTHWOOD



Match to Page 0

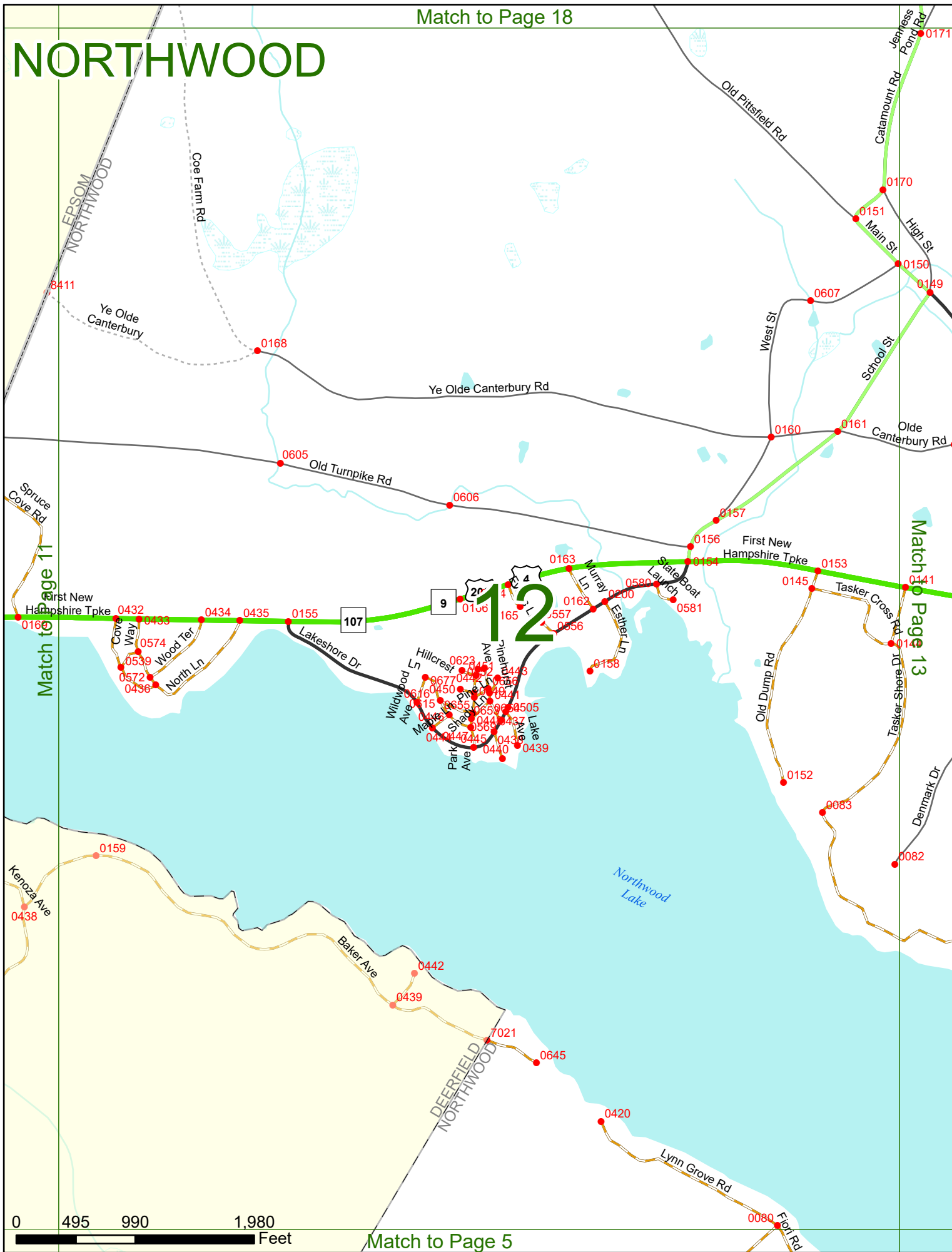
Match to Page 12

# 11

0 495 990 1,980 Feet

Match to Page 0

# NORTHWOOD



Match to Page 11

Match to Page 13

Match to Page 5

0 495 990 1,980 Feet

12

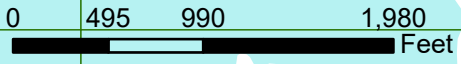
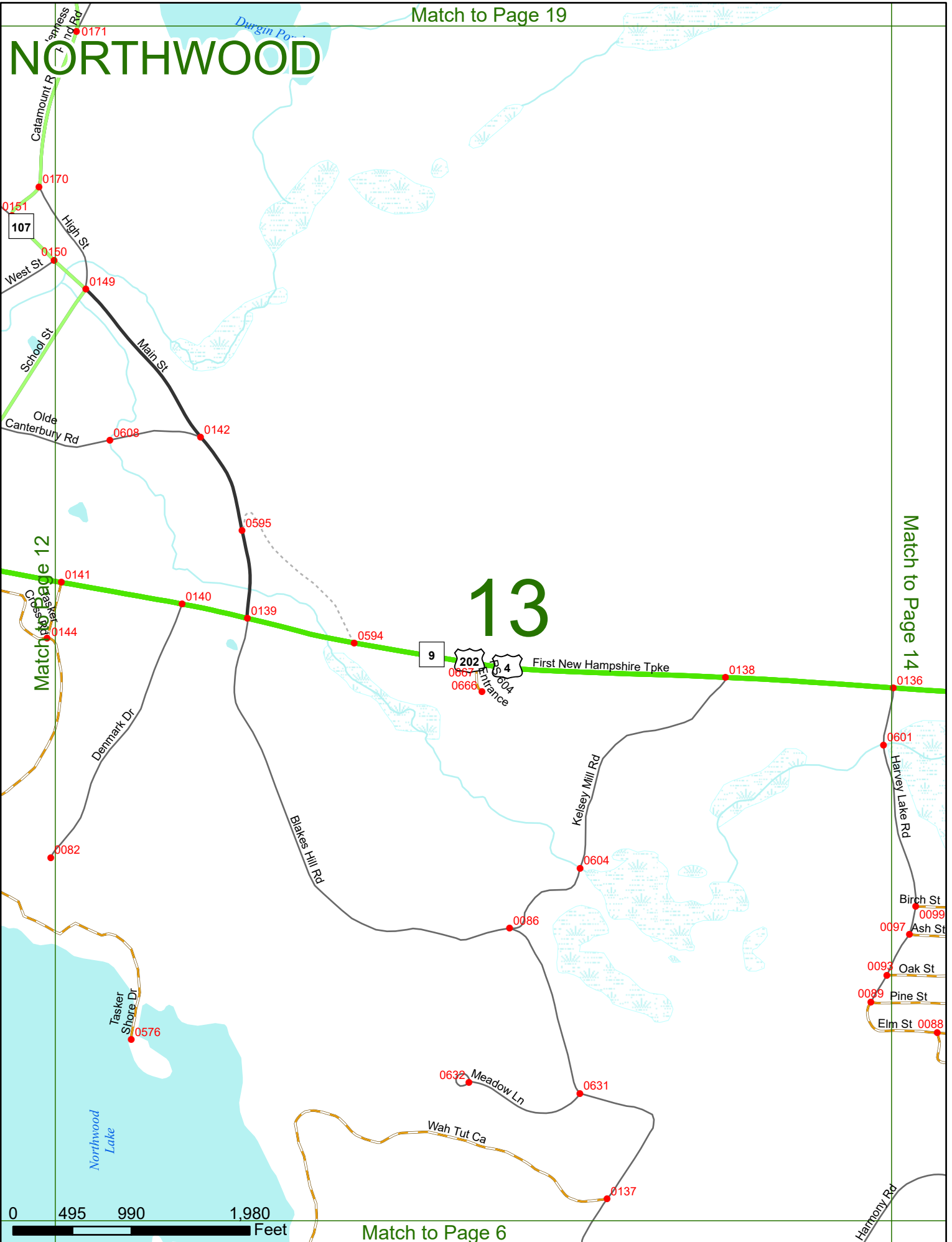
Match to Page 19

# NORTHWOOD

# 13

Match to Page 14

Match to Page 12



Match to Page 6

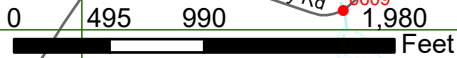
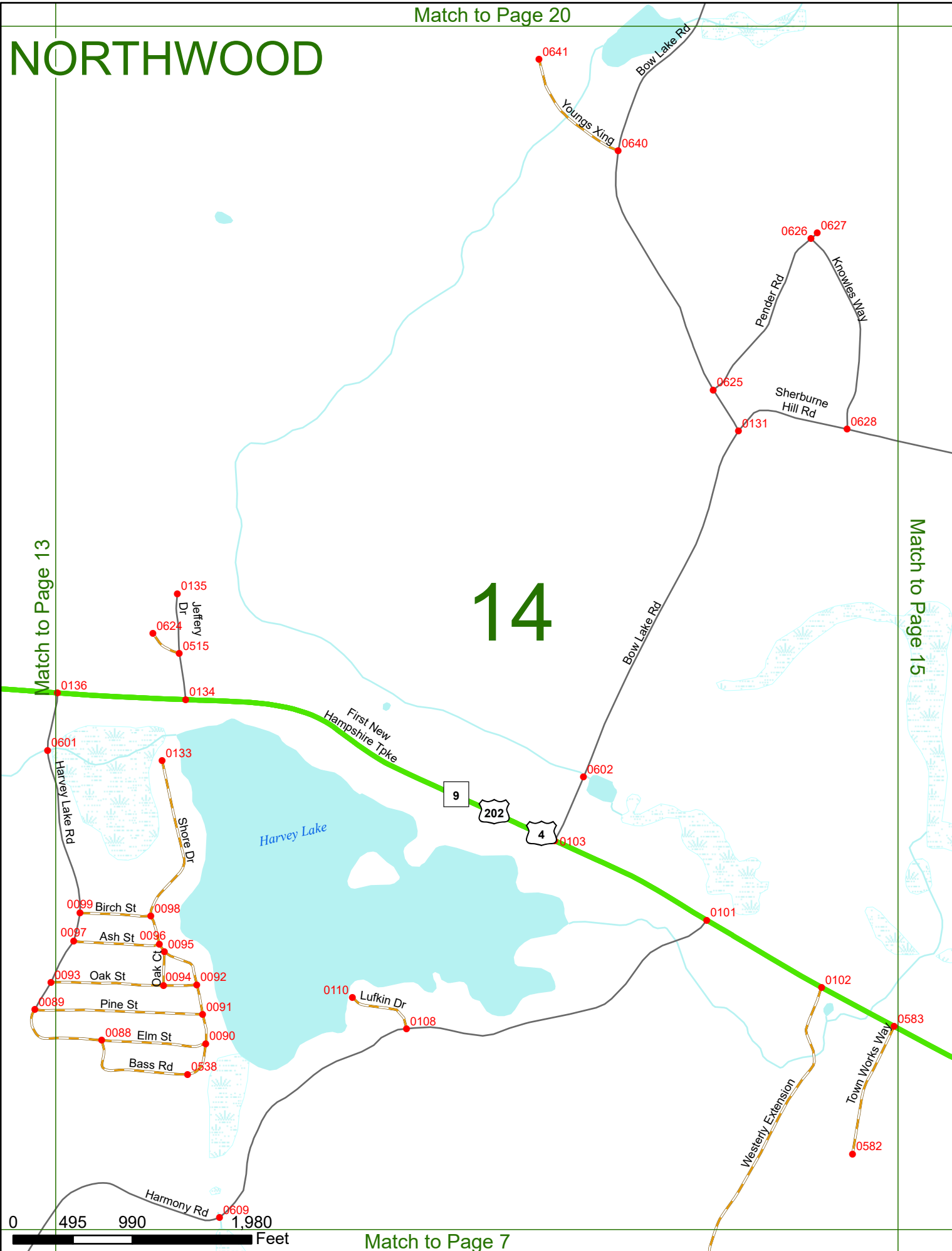


# NORTHWOOD

# 14

Match to Page 13

Match to Page 15



# NORTHWOOD

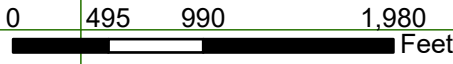
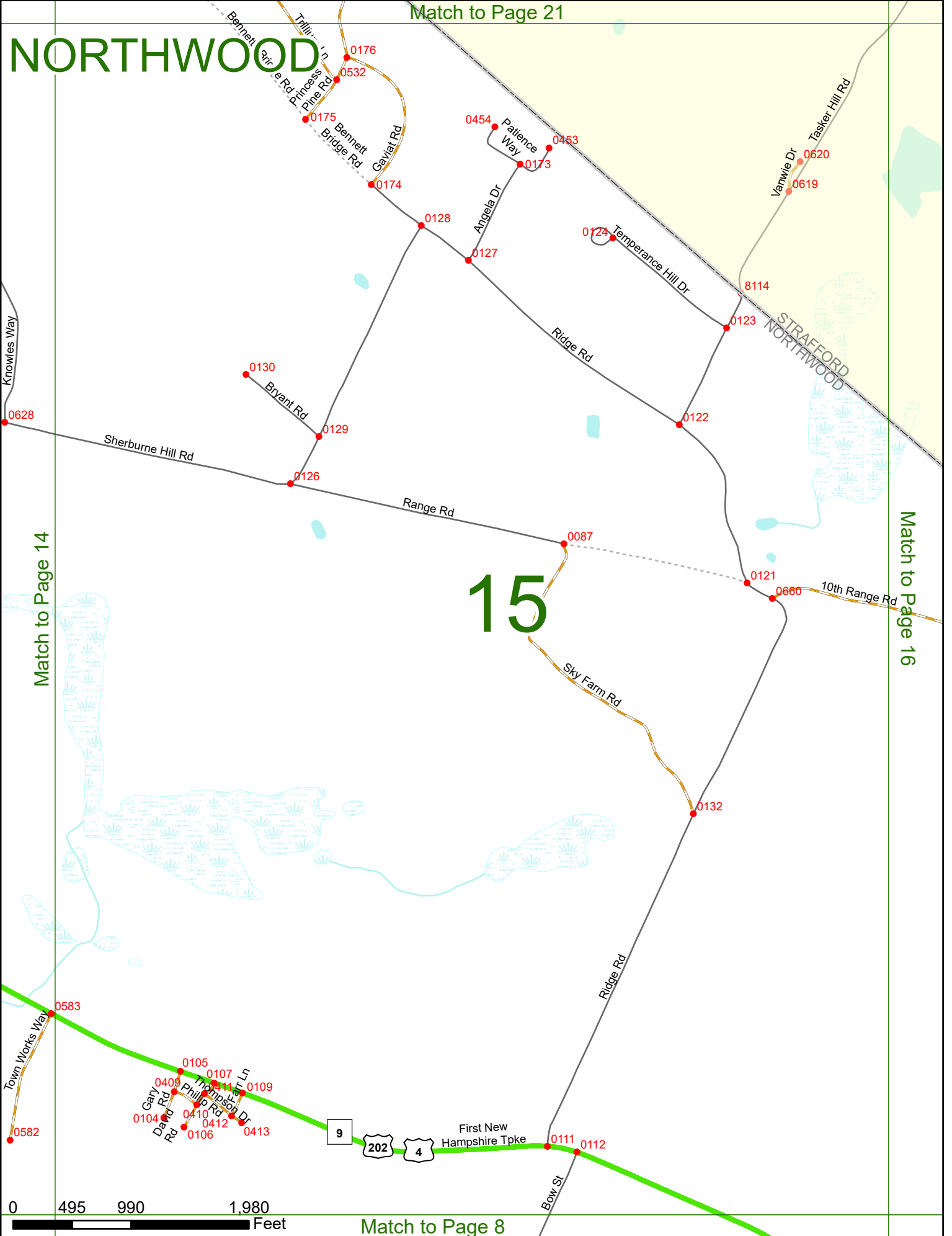
Match to Page 21

# 15

Match to Page 14

Match to Page 16

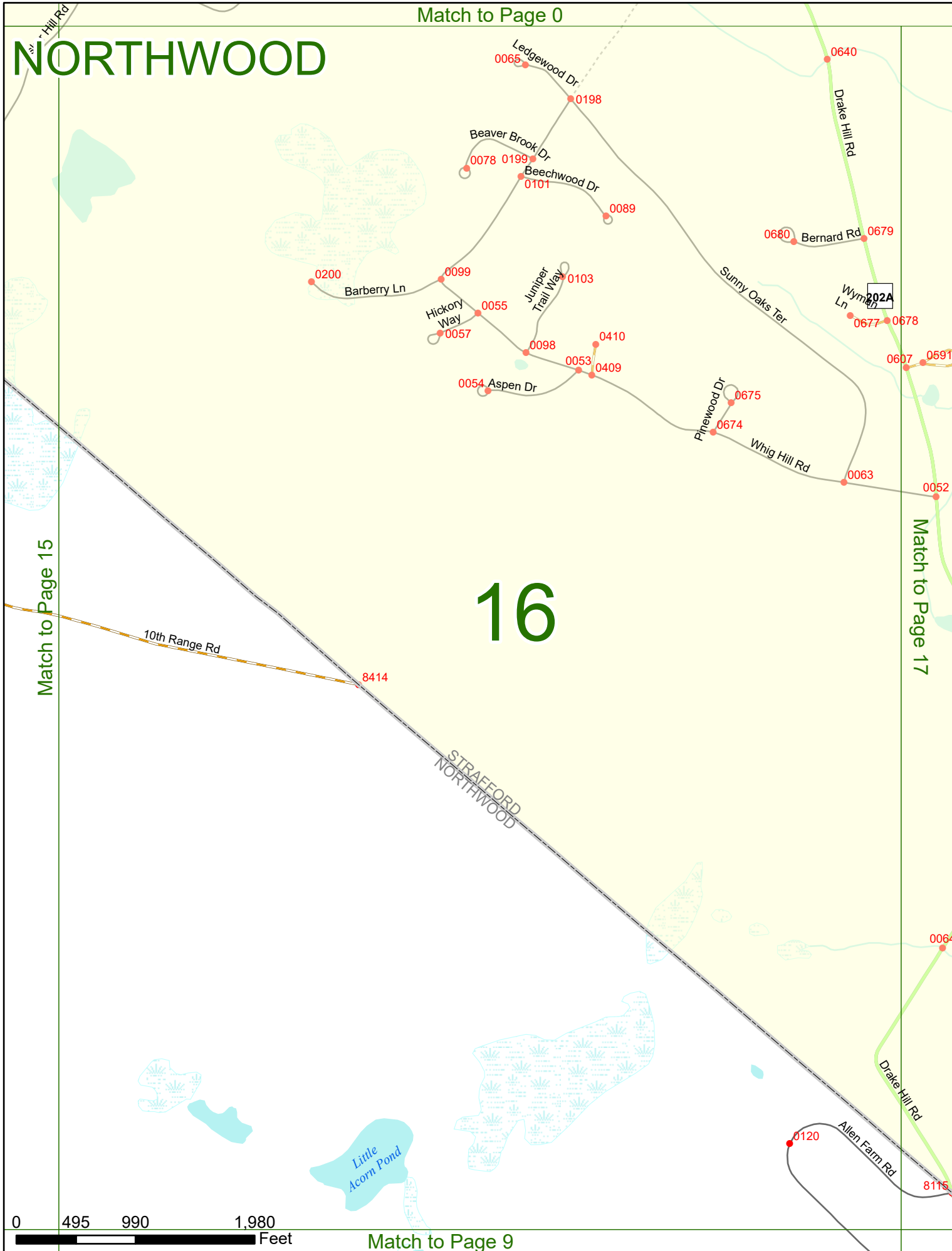
STRAFFORD  
NORTHWOOD



Match to Page 8

Match to Page 0

# NORTHWOOD



# 16

Match to Page 15

Match to Page 17

0 495 990 1,980 Feet

Match to Page 9

# NORTHWOOD

Match to Page 0

# 17

0070

0062

0060

0697

0061

0679

Wyman Ln  
0678

0607 0591

0408

Spruce Ponds

Old Canaan Rd

Sunny Oaks Ter

Drake Hill Rd

Woodland Dr

Whig Hill Rd

0052

0407

Match to Page 16

Match to Page 0

202A

0051

0050

0049

6101

STRAFFORD  
BARRINGTON

Canaan Back Rd

Drake Hill Rd

0064

Canaan Rd

Back Canaan Rd

Canaan Rd

Terri Ct  
0047 0048

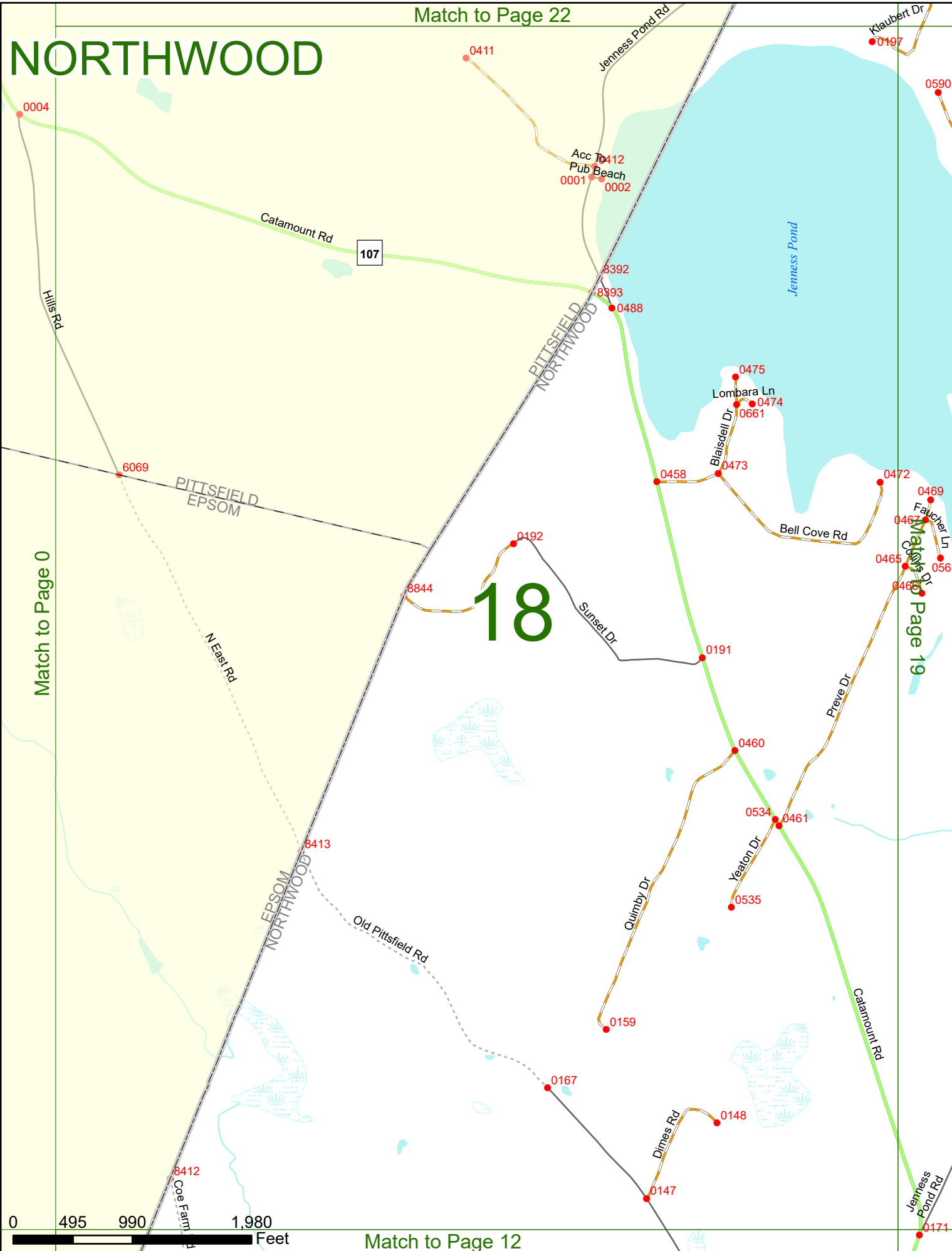
STRAFFORD  
NORTHWOOD  
Allen Farm Rd

8115

0 495 990 1,980 Feet

Garland Rd  
6410 6102  
1584  
Match to Page 10

# NORTHWOOD



Match to Page 0

Match to Page 19

0 495 990 1,980 Feet

Match to Page 23

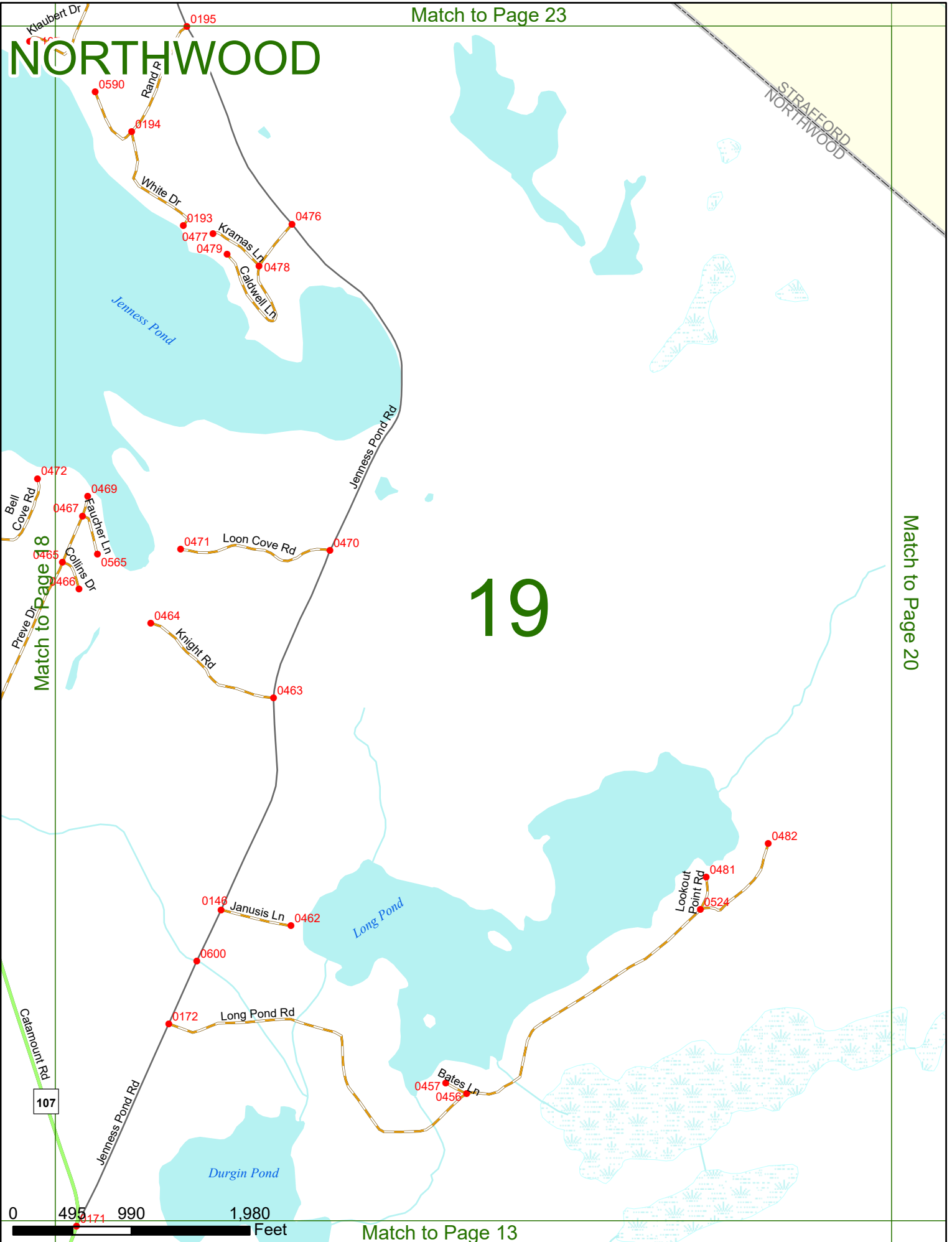
# NORTHWOOD

STAFFORD  
NORTHWOOD

# 19

Match to Page 20

Match to Page 8



Match to Page 13

# NORTHWOOD

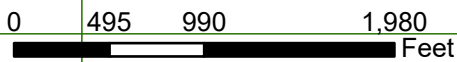
Match to Page 0

Match to Page 19

Match to Page 21

# 20

STRAFFORD  
NORTHWOOD



Match to Page 14

Province Rd

Jalisco Rd

0110

0109

0111

Pointe Trinity Dr

Koocaukee Ct  
0544 0704 0515 0706

Pumphouse Rd  
0518 0517

0108

Carter Way

0695

0684

Northwood Rd

0685

Carter Rd

0112

Piper Dr

0521

0519

Match to Page 21

0612 0613

0190

Corson Dr

8113

0498 0189

0483 0484

0643 0499

0644

0596

0486

0676 0487

0485

Henson Ln

0118 0455

0184

Bennetts Bridge Rd

Balsam Ln

0593 0187 0567

Lakeview Dr

0183

Overlook Rd

0181

0618

Byrne Rd

0617

Mill Pond Rd

0598

0597

0522

Match to Page 0

# NORTHWOOD



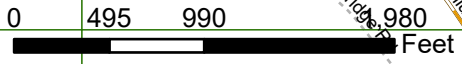
# 21

Match to Page 20

Match to Page 0

Bow Lake

STRAFFORD  
NORTHWOOD



Match to Page 15



# NORTHWOOD

Match to Page 0

Match to Page 0

Match to Page 23

# 22

0126

0121

0125

Tommy Town Rd

Clough Rd

Shingle Mill Brook Rd

0425

0123

Greer Ln

0122

0421

Rocky Point Rd

0015

0014

Clough Rd

PITTSFIELD  
NORTHWOOD

0003

8391

Jeness Pond Rd

0196

0 495 990 1,980 Feet

Match to Page 18

Jeness Pond

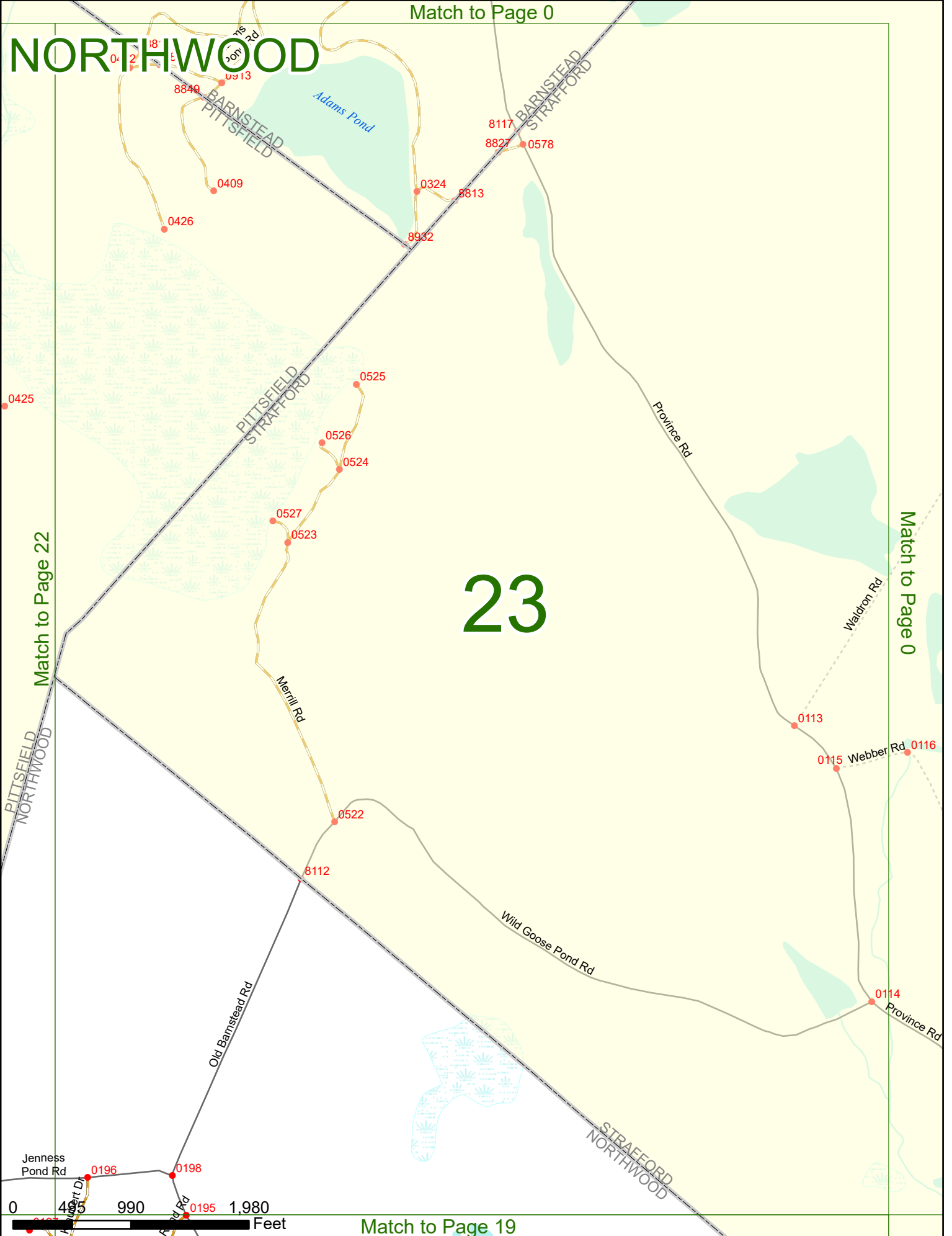
0197

Klaibert Dr

# NORTHWOOD

Match to Page 0

# 23



Match to Page 22

Match to Page 0

Match to Page 19

