




Maps and data sets are not guaranteed to be free from errors and omissions. Data is in a constant state of update and correction by various groups and agencies. Information displayed on this map is the best available at the time of publication.

2024 Nodal Reference Bookmap

LEGEND

Divided Highway Limited Access	Turnpike Toll Road	U.S. Route	N.H. Route
			
State Roads (Carries NO Route Number)	Local Roads	Class 6 Roads (Not Maintained)	Private Roads
			
	State Line		Lakes & Ponds
	County Line		State Parks
	Town Line		National & State Forests
	Rivers & Streams		Reference Nodes

NHDOT will accept crash locations based on the State of NH Uniform Police Traffic Accident Report.

Crash occurred on:

Option 1 Street Address
 123 Main Street

Option 2 Route No and/or Distance from NESW Intesecting Road, Bridge,
 Street name Intersecting Street Town/County line
 Main Street 500 E Oak Street

Option 3 First Node Distance from First Node Second Node
 515 212 632

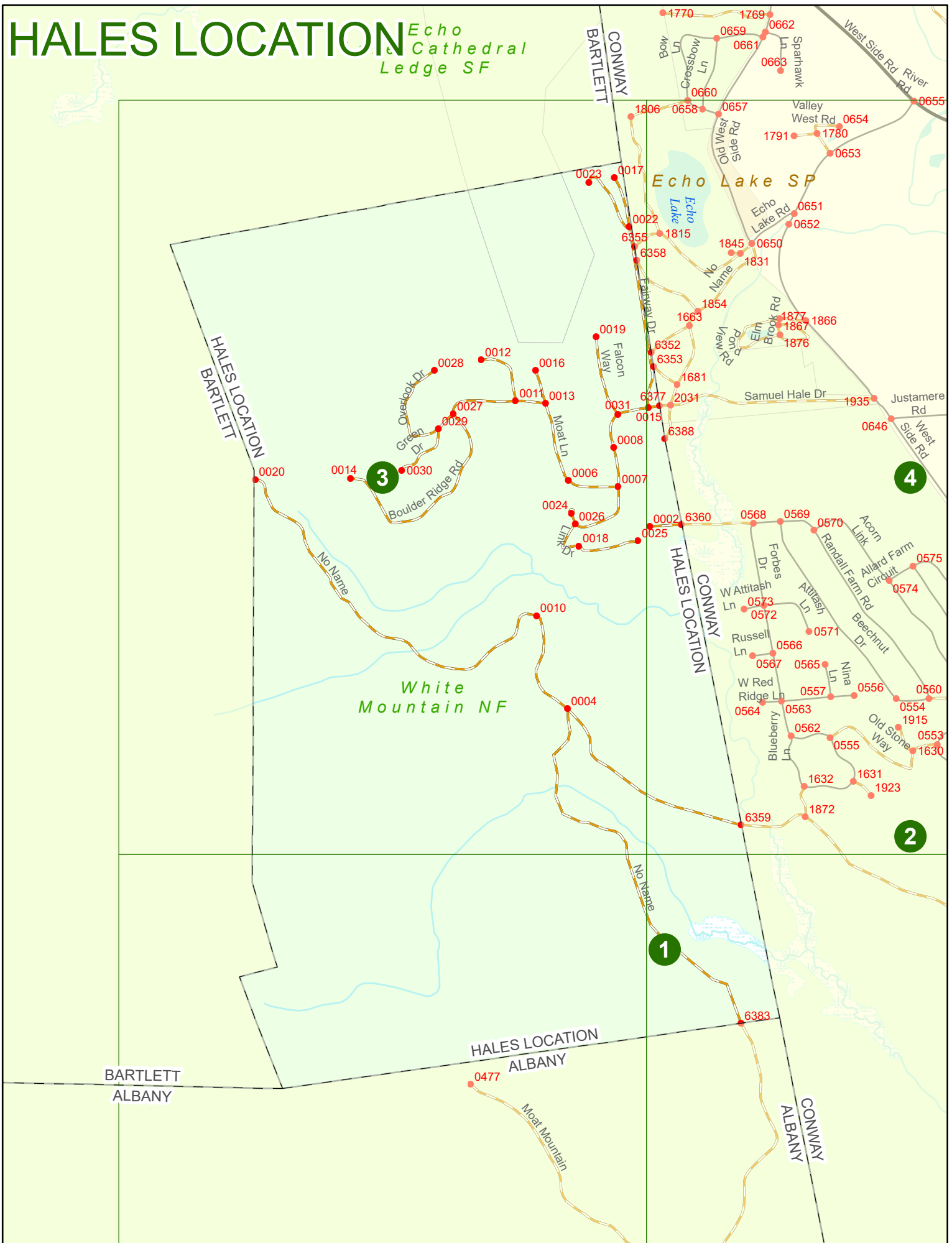
Option 4 Route No and/or Mile Marker on Interstate Only NESW Mile (Marker)
 Street name
 189S 700 feet S 36.8

Option 3 – Example

Street Name Loudon Road
First Node 803
Distance from First Node 318 Ft
Second Node 813



HALES LOCATION Echo & Cathedral Ledge SF



Match to Page 3

HALES LOCATION

HALES LOCATION
BARTLETT

BARTLETT
ALBANY

HALES LOCATION
ALBANY

0477

Meat Mountain

1
White
Mountain NF

Match to Page 0

Match to Page 2

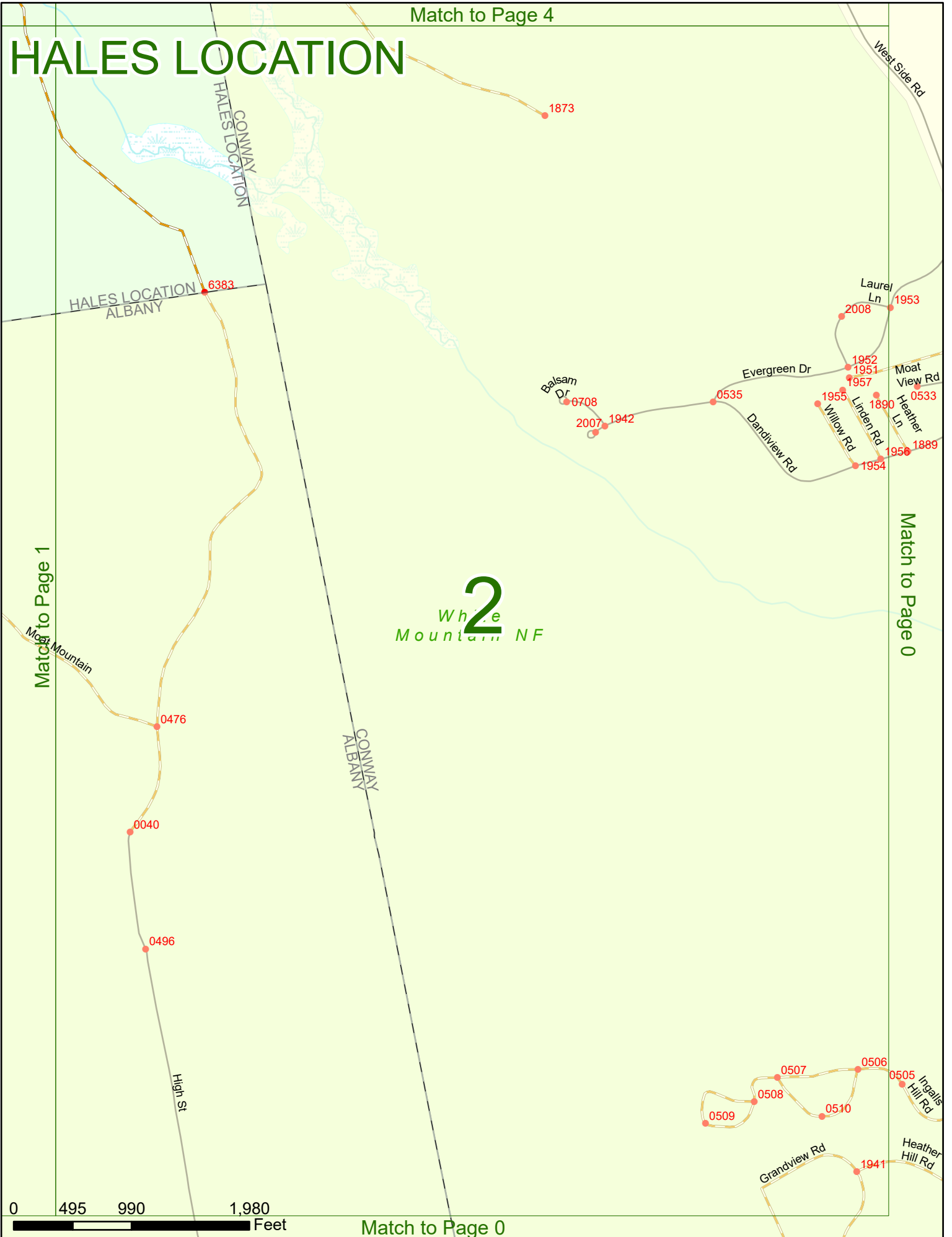
0 495 990 1,980 Feet

Match to Page 0



Match to Page 4

HALES LOCATION



Match to Page 1

Match to Page 0

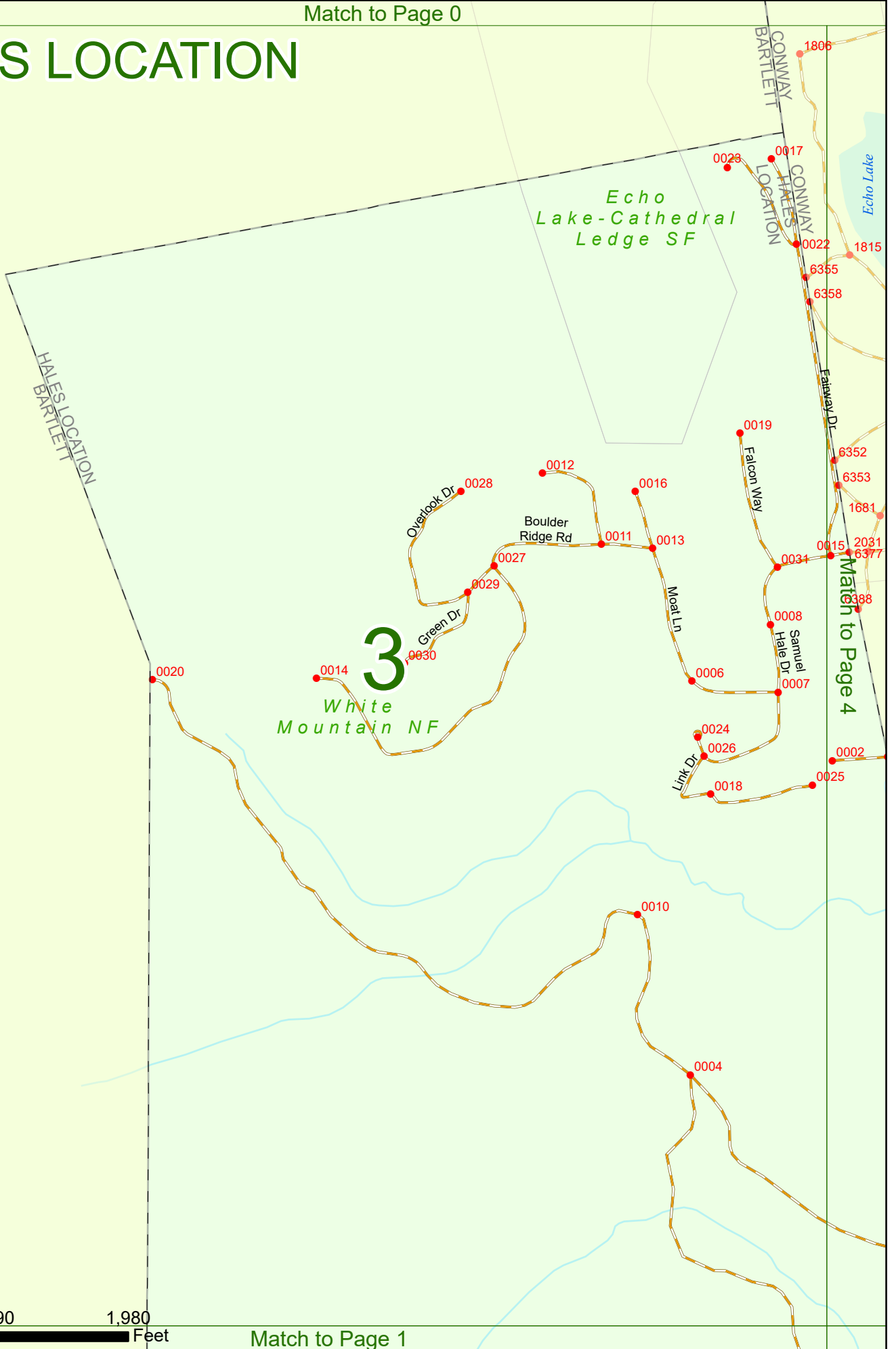
2
White Mountain NF

0 495 990 1,980 Feet

Match to Page 0

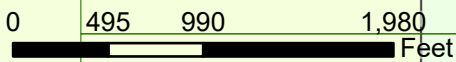
Match to Page 0

HALES LOCATION



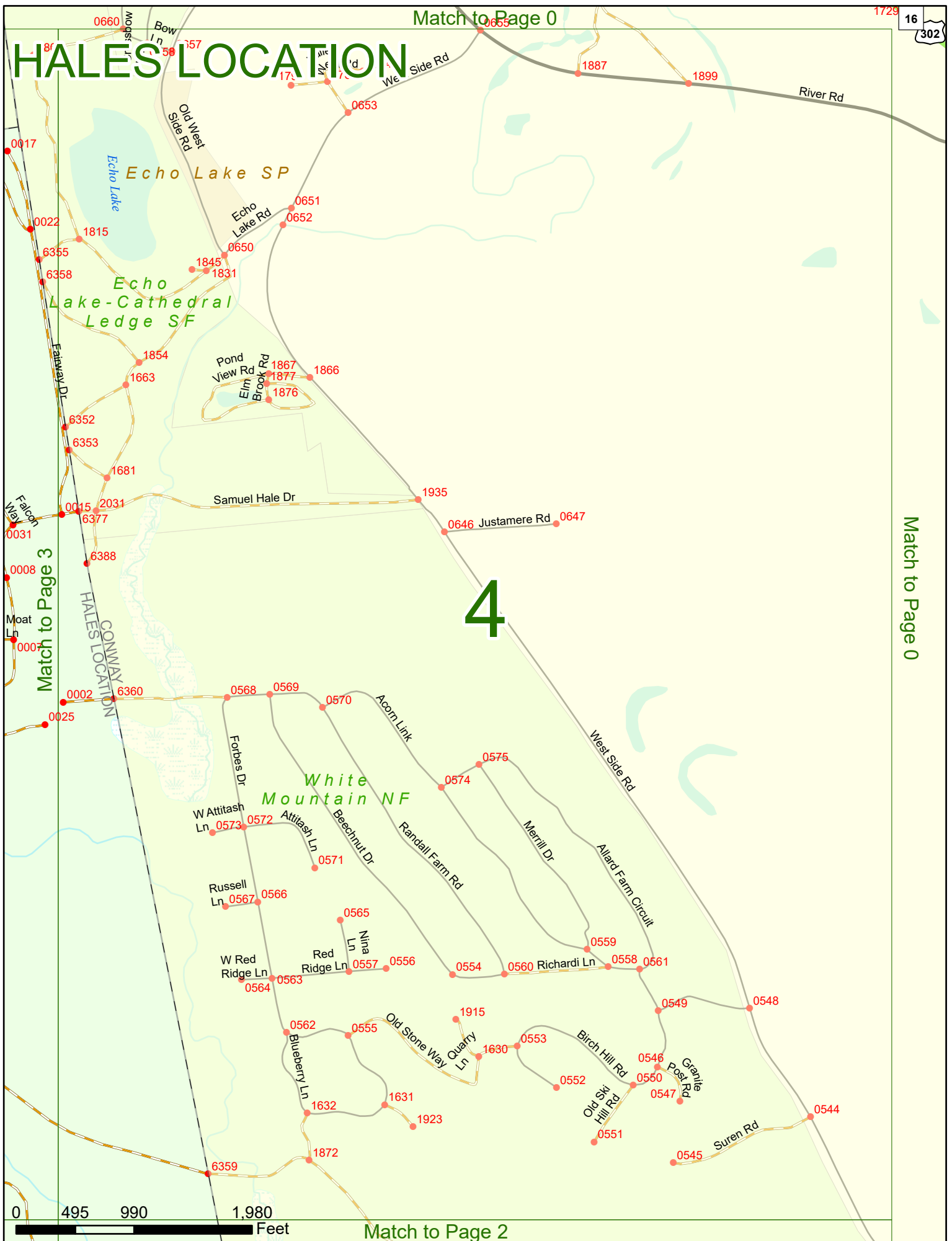
Match to Page 0

Match to Page 4



Match to Page 1

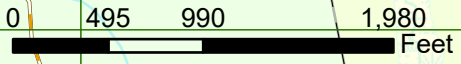
HALES LOCATION



Match to Page 0

4

Match to Page 3



Match to Page 2