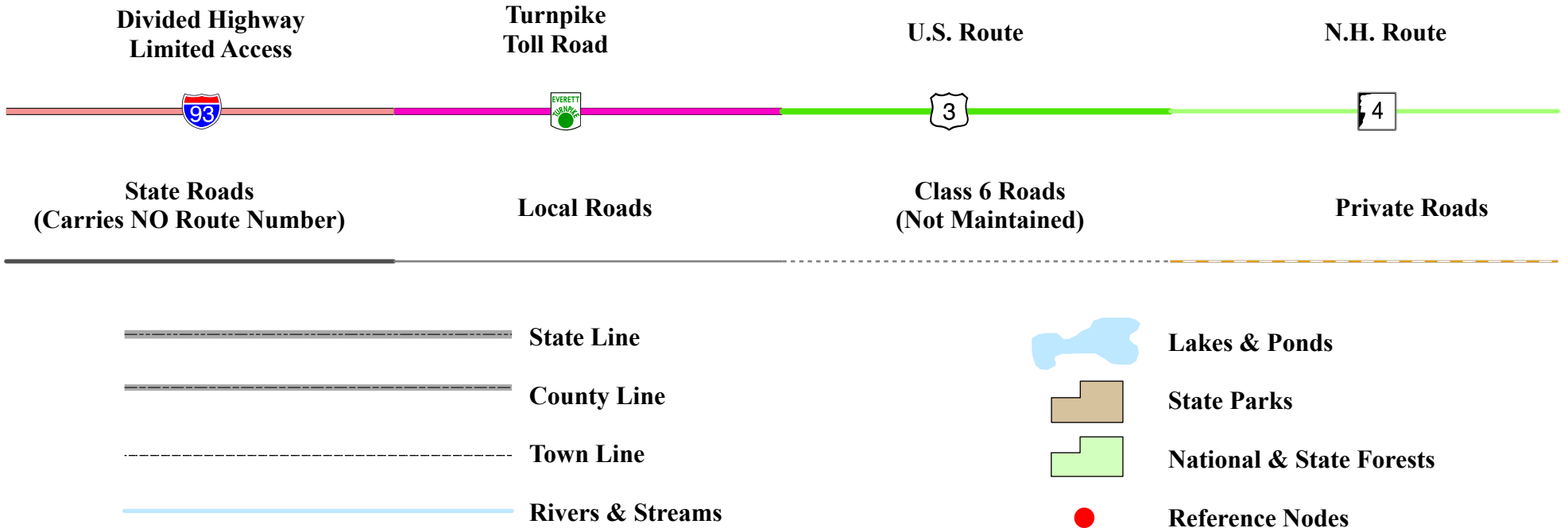


New Hampshire
DOT
 Department of Transportation

Maps and data sets are not guaranteed to be free from errors and omissions. Data is in a constant state of update and correction by various groups and agencies. Information displayed on this map is the best available at the time of publication.

2024 Nodal Reference Bookmap

LEGEND



NHDOT will accept crash locations based on the State of NH Uniform Police Traffic Accident Report.

Crash occurred on:

Option 1 Street Address
 123 Main Street

Option 2 Route No and/or Distance from NESW Intesecting Road, Bridge,
 Street name Intersecting Street Town/County line
 Main Street 500 E Oak Street

Option 3 First Node Distance from First Node Second Node
 515 212 632

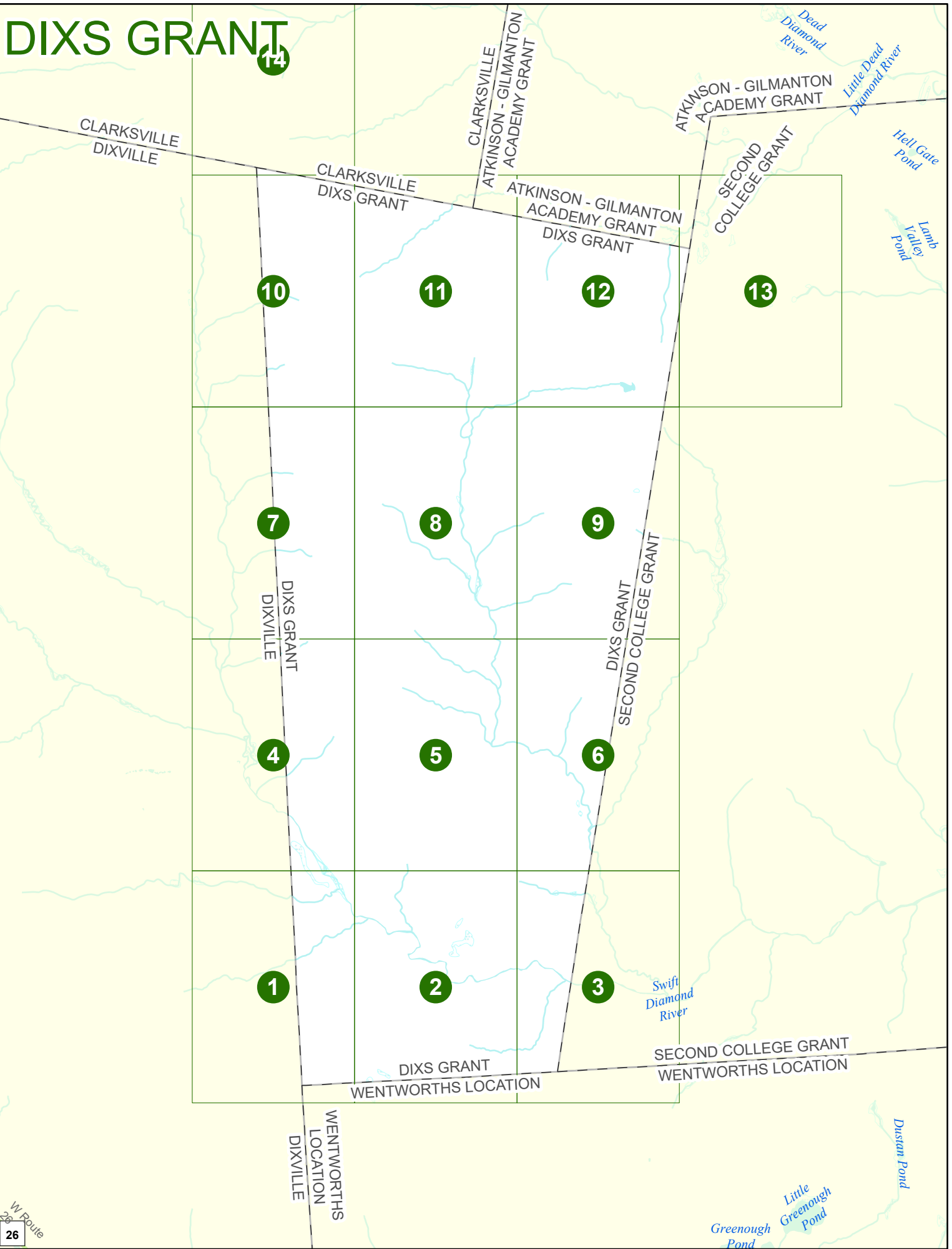
Option 4 Route No and/or Mile Marker on Interstate Only NESW Mile (Marker)
 Street name
 189S 700 feet S 36.8

Option 3 – Example

Street Name Loudon Road
First Node 803
Distance from First Node 318 Ft
Second Node 813



DIXS GRANT



Match to Page 4

DIXS GRANT

Swift
Diamond
River

Match to Page 0

1

DIXS GRANT
DIXVILLE

Match to Page 2

DIXS GRANT
WENTWORTHS LOCATION

WENTWORTHS
LOCATION
DIXVILLE

0 495 990 1,980 Feet

Match to Page 0

Match to Page 5

DIXS GRANT

Match to Page 1

Match to Page 3

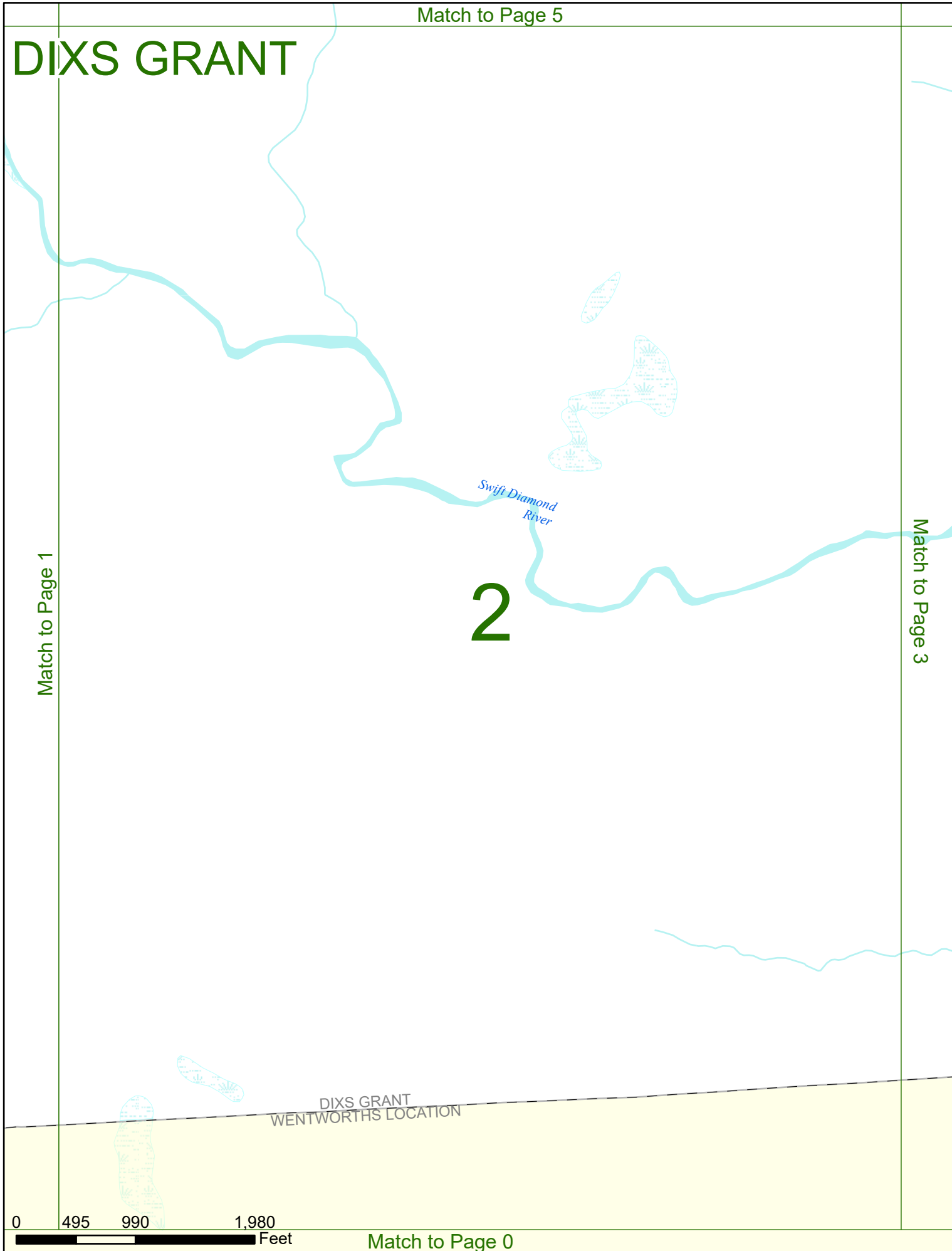
2

Swift Diamond River

DIXS GRANT
WENTWORTHS LOCATION

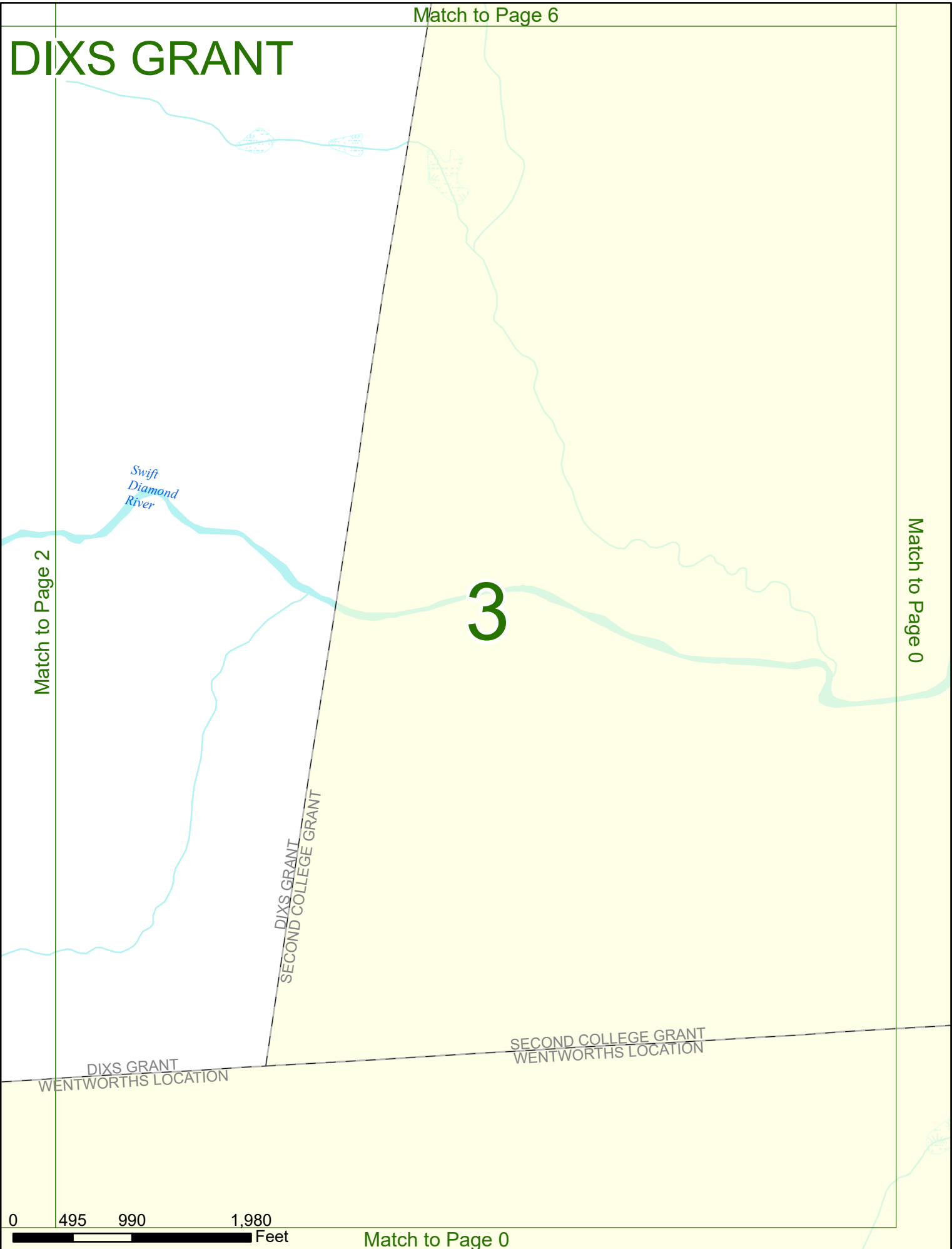
0 495 990 1,980 Feet

Match to Page 0



Match to Page 6

DIXS GRANT



Match to Page 2

Swift
Diamond
River

3

Match to Page 0

DIXS GRANT
SECOND COLLEGE GRANT

DIXS GRANT
WENTWORTHS LOCATION

SECOND COLLEGE GRANT
WENTWORTHS LOCATION

0 495 990 1,980 Feet

Match to Page 0

Match to Page 7

DIXS GRANT

Match to Page 0

4

DIXS GRANT
DIXVILLE

*Swift
Diamond
River*

Match to Page 5

0 495 990 1,980 Feet

Match to Page 1

Match to Page 8

DIXS GRANT

Match to Page 4

Match to Page 6

5

0 495 990 1,980 Feet

Match to Page 2

Match to Page 9

DIXS GRANT

Match to Page 5

6

DIXS GRANT
SECOND COLLEGE GRANT

Match to Page 0

0 495 990 1,980 Feet

Match to Page 3

Match to Page 10

DIXS GRANT

Match to Page 0

DIXS GRANT
DIXVILLE
7

Match to Page 8

0 495 990 1,980 Feet

Match to Page 4

Match to Page 11

DIXS GRANT

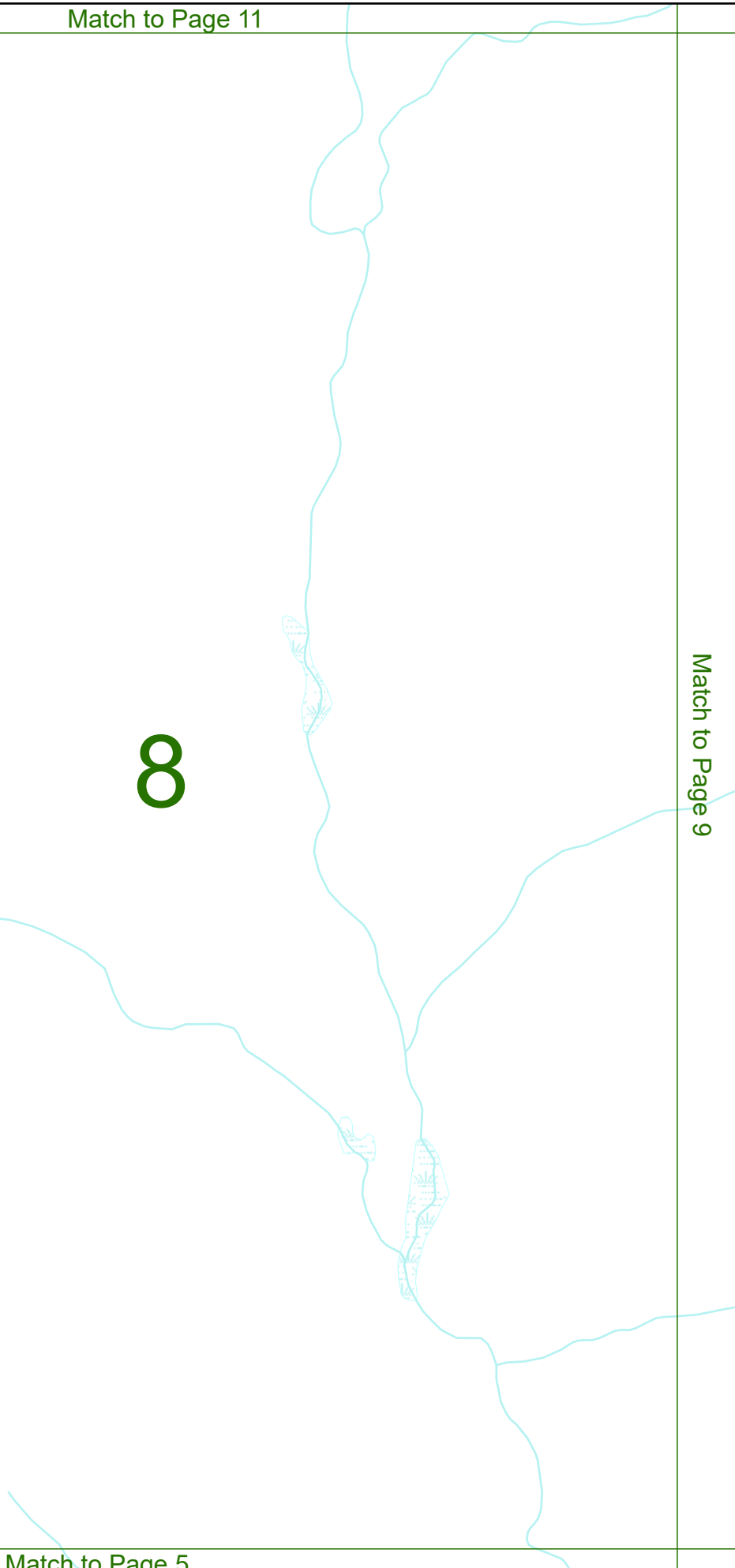
Match to Page 7

Match to Page 9

8

0 495 990 1,980 Feet

Match to Page 5



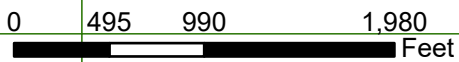
DIXS GRANT

9

Match to Page 8

Match to Page 0

DIXS GRANT
SECOND COLLEGE GRANT



Match to Page 6

DIXS GRANT

Match to Page 14

CLARKSVILLE
DIXS GRANT

Match to Page 0

DIXS GRANT
DIXVILLE

10

Match to Page 11

0 495 990 1,980 Feet

Match to Page 7

Match to Page 0

DIXS GRANT

CLARKSVILLE
DIXS GRANT

CLARKSVILLE
ATKINSON - GILMANTON
ACADEMY GRANT

ATKINSON - GILMANTON
ACADEMY GRANT
DIXS GRANT

11

Match to Page 10

Match to Page 12

0 495 990 1,980 Feet

Match to Page 8

DIXS GRANT

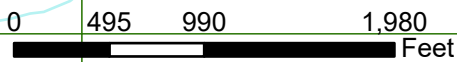
ATKINSON - GILMANTON
ACADEMY GRANT
DIXS GRANT

12

Match to Page 11

Match to Page 13

DIXS GRANT
SECOND COLLEGE GRANT



Match to Page 0

DIXS GRANT

ATKINSON - GILMANTON
ACADEMY GRANT
SECOND COLLEGE GRANT

Match to Page 12

DIXS GRANT
SECOND COLLEGE GRANT

13

Match to Page 0

0 495 990 1,980 Feet

Match to Page 0

Match to Page 0

DIXS GRANT

14

Match to Page 0

Match to Page 0

CLARKSVILLE
DIXVILLE

CLARKSVILLE
DIXS GRANT

0 495 990 1,980 Feet

Match to Page 10