



Maps and data sets are not guaranteed to be free from errors and omissions. Data is in a constant state of update and correction by various groups and agencies. Information displayed on this map is the best available at the time of publication.

# 2023 Nodal Reference Bookmap

## LEGEND



NHDOT will accept crash locations based on the State of NH Uniform Police Traffic Accident Report.

Crash occurred on:

**Option 1**     Street Address  
                   123 Main Street

**Option 2**     Route No and/or     Distance from             NESW             Intesecting Road, Bridge,  
                   Street name             Intersecting Street                                     Town/County line  
                   Main Street                     500                     E                     Oak Street

**Option 3**     First Node                     Distance from First Node                     Second Node  
                   515                                     212                                     632

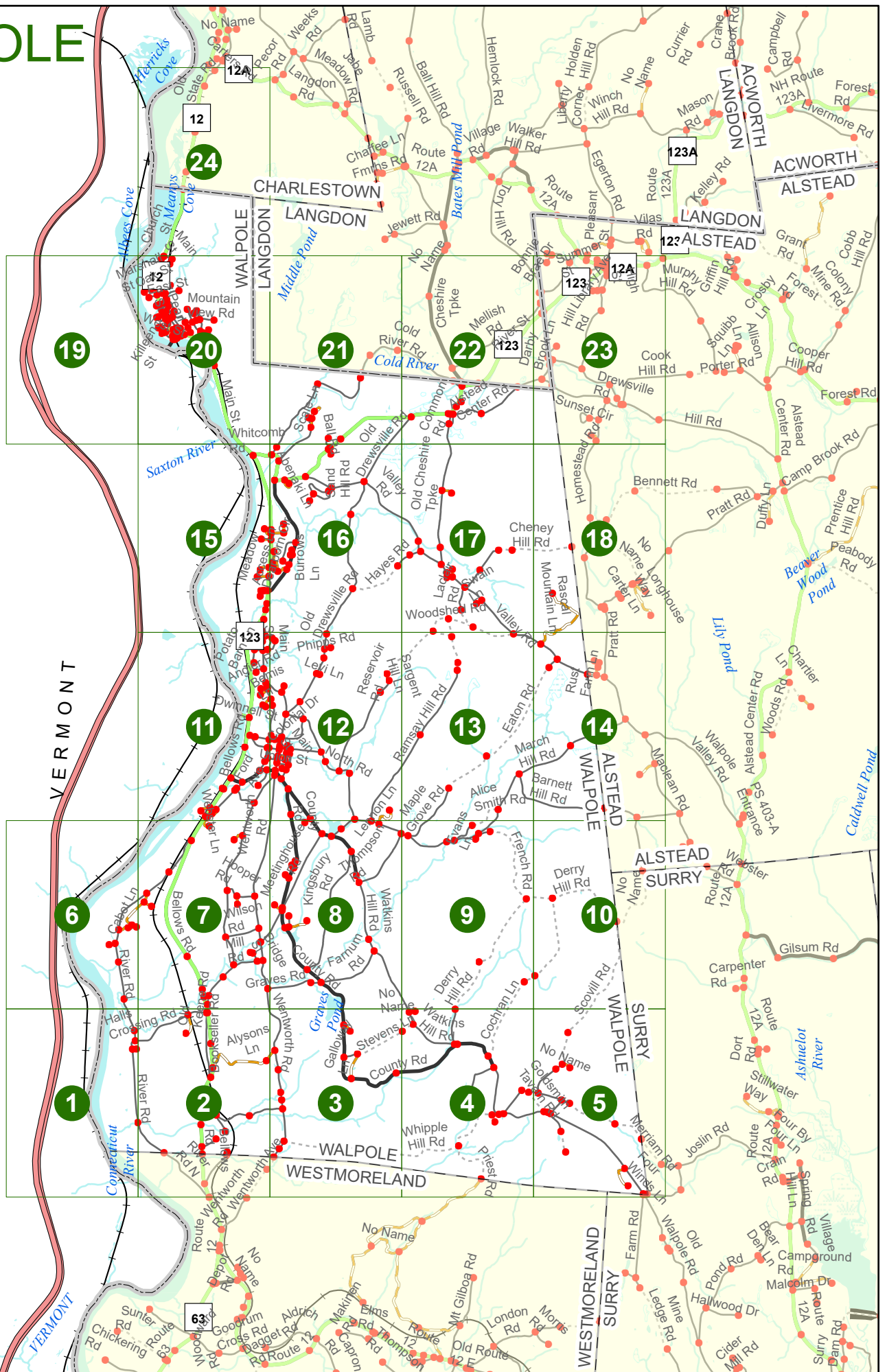
**Option 4**     Route No and/or             Mile Marker on Interstate Only             NESW             Mile (Marker)  
                   Street name  
                   189S                                     700 feet                                     S                     36.8

**Option 3 – Example**

Street Name                     Loudon Road  
First Node                             803  
Distance from First Node             318 Ft  
Second Node                             813



# WALPOLE



# WALPOLE

Match to Page 6

Match to Page 0

VERMONT  
N 91  
N 91

# 1

Connecticut  
River

0384  
0029 Halls Crossing Rd  
Sawyer Ln 0323 0324

Match to Page 2

River Rd

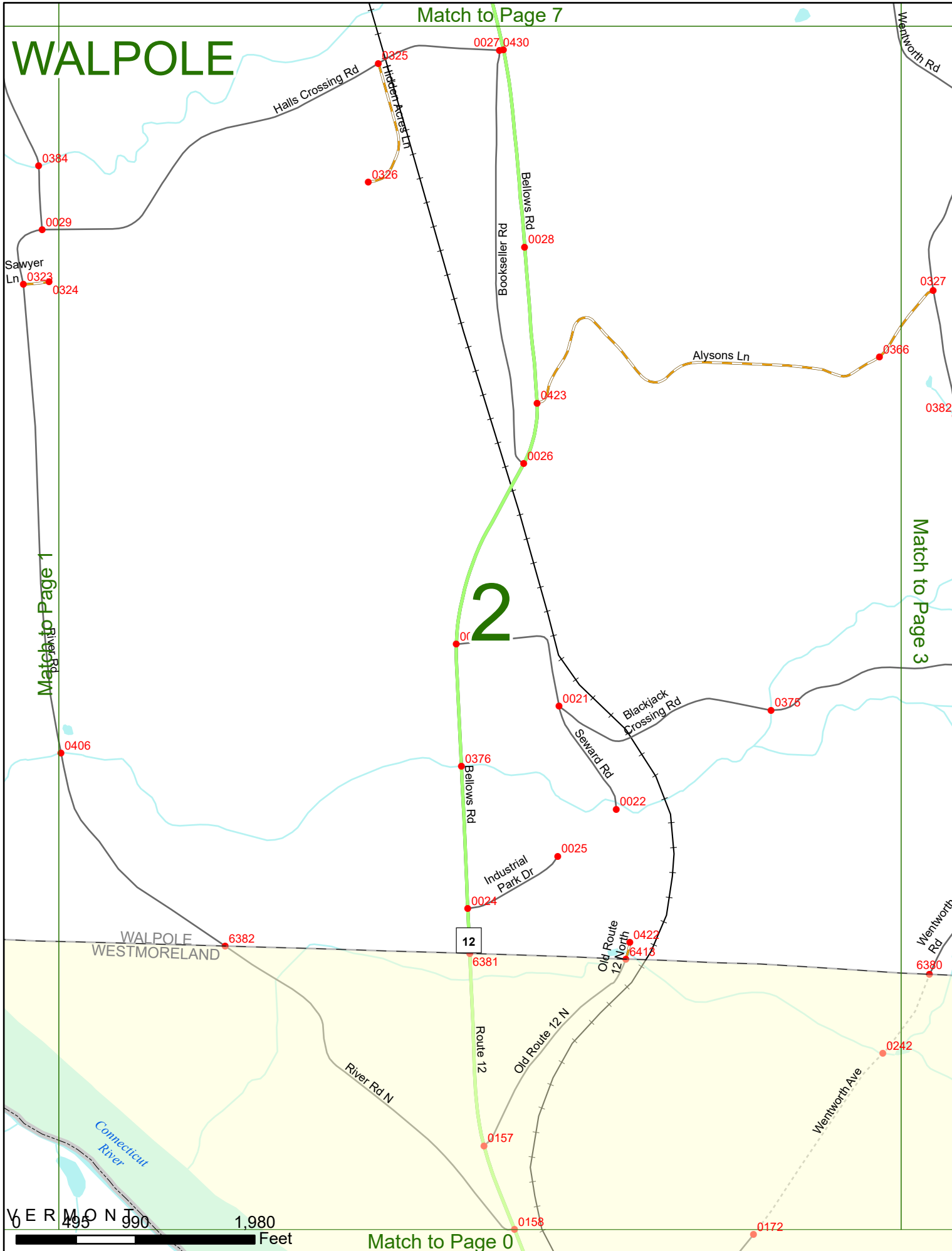
0406

WALPOLE  
WESTMORELAND

0 495 990 1,980 Feet

Match to Page 0

# WALPOLE



# WALPOLE

Match to Page 8

Match to Page 2

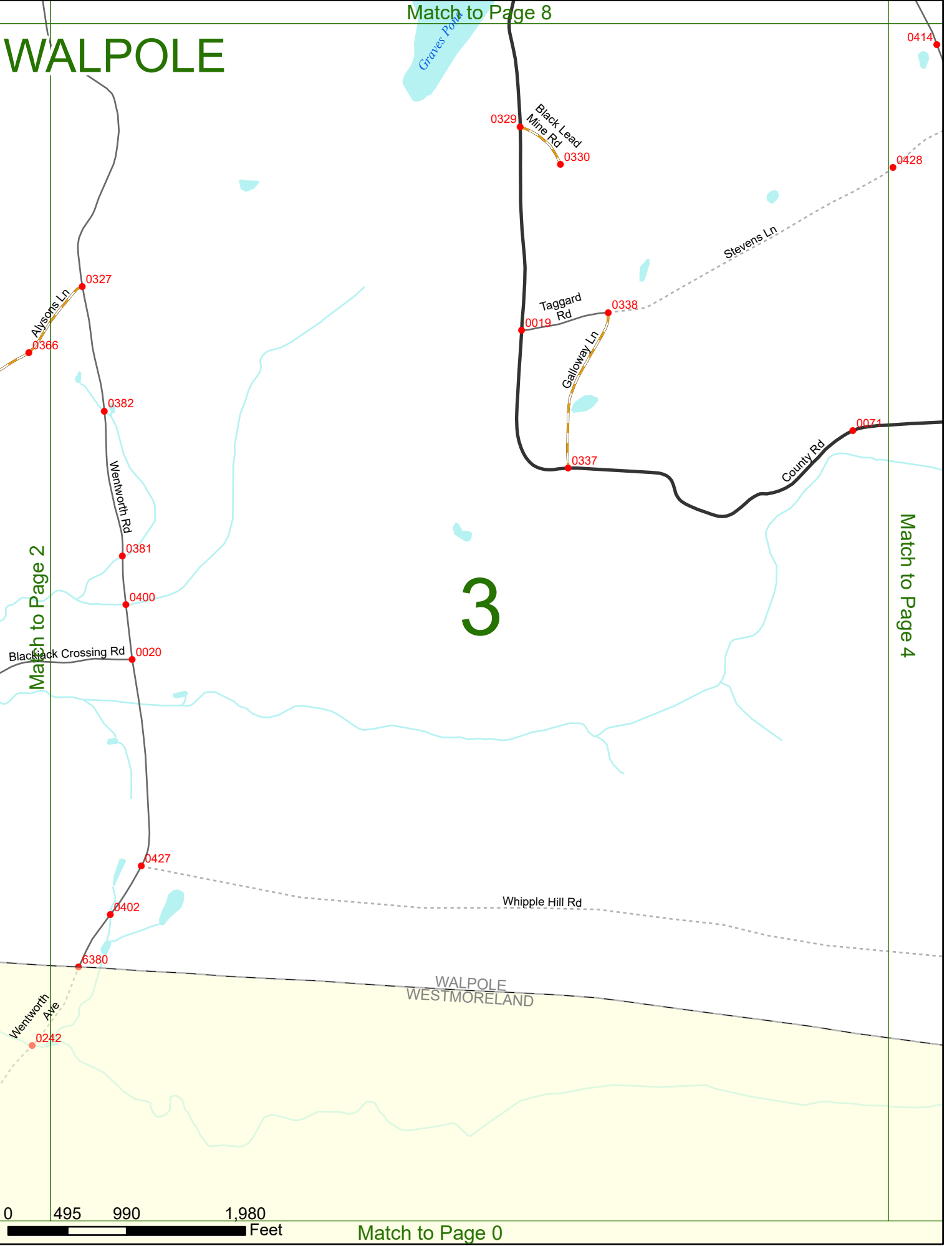
Match to Page 4

Black Rock Crossing Rd

Wentworth Ave

0 495 990 1,980 Feet

Match to Page 0



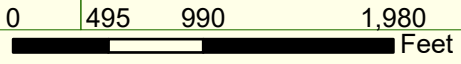
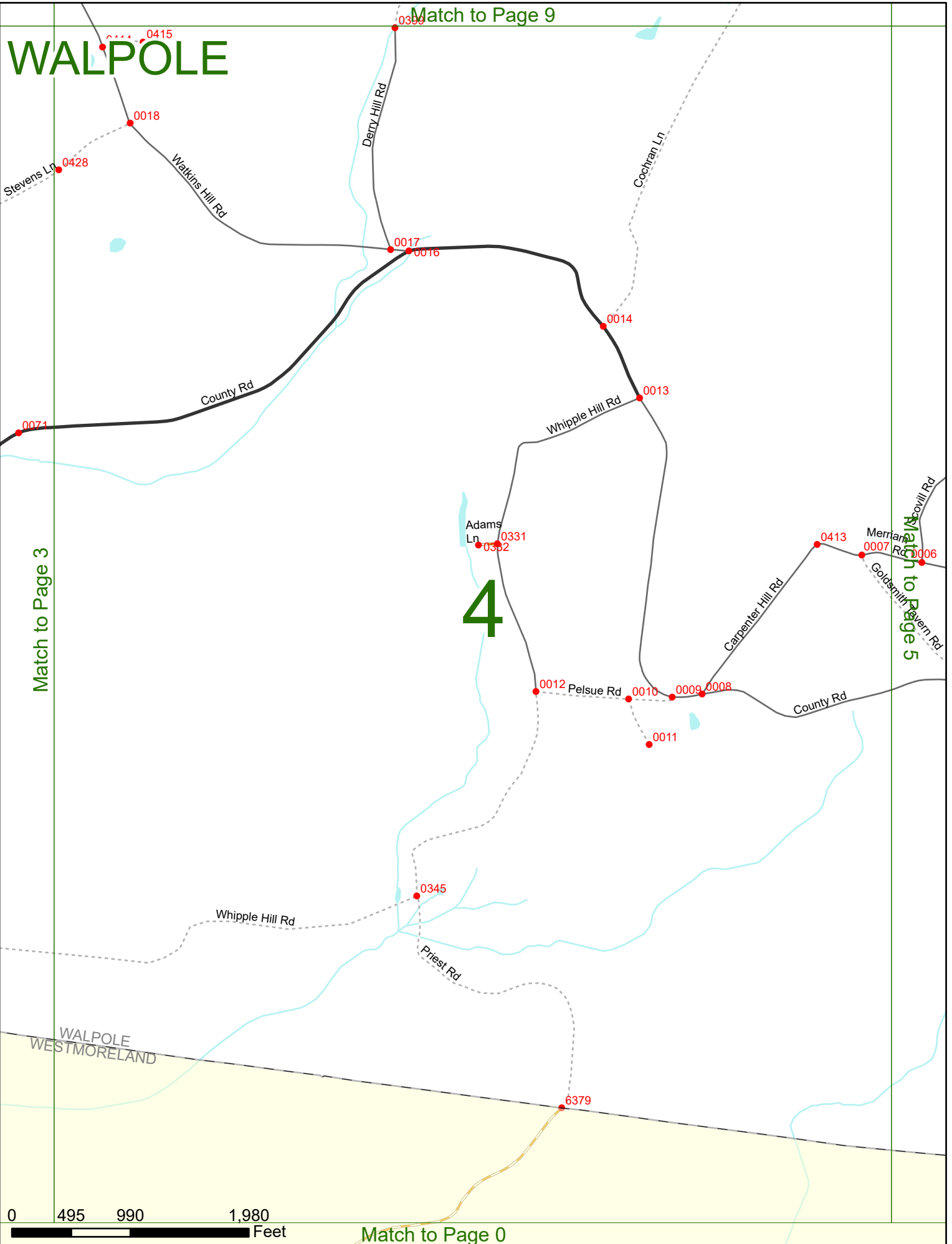
# WALPOLE

Match to Page 9

Match to Page 3

Match to Pages 5

# 4



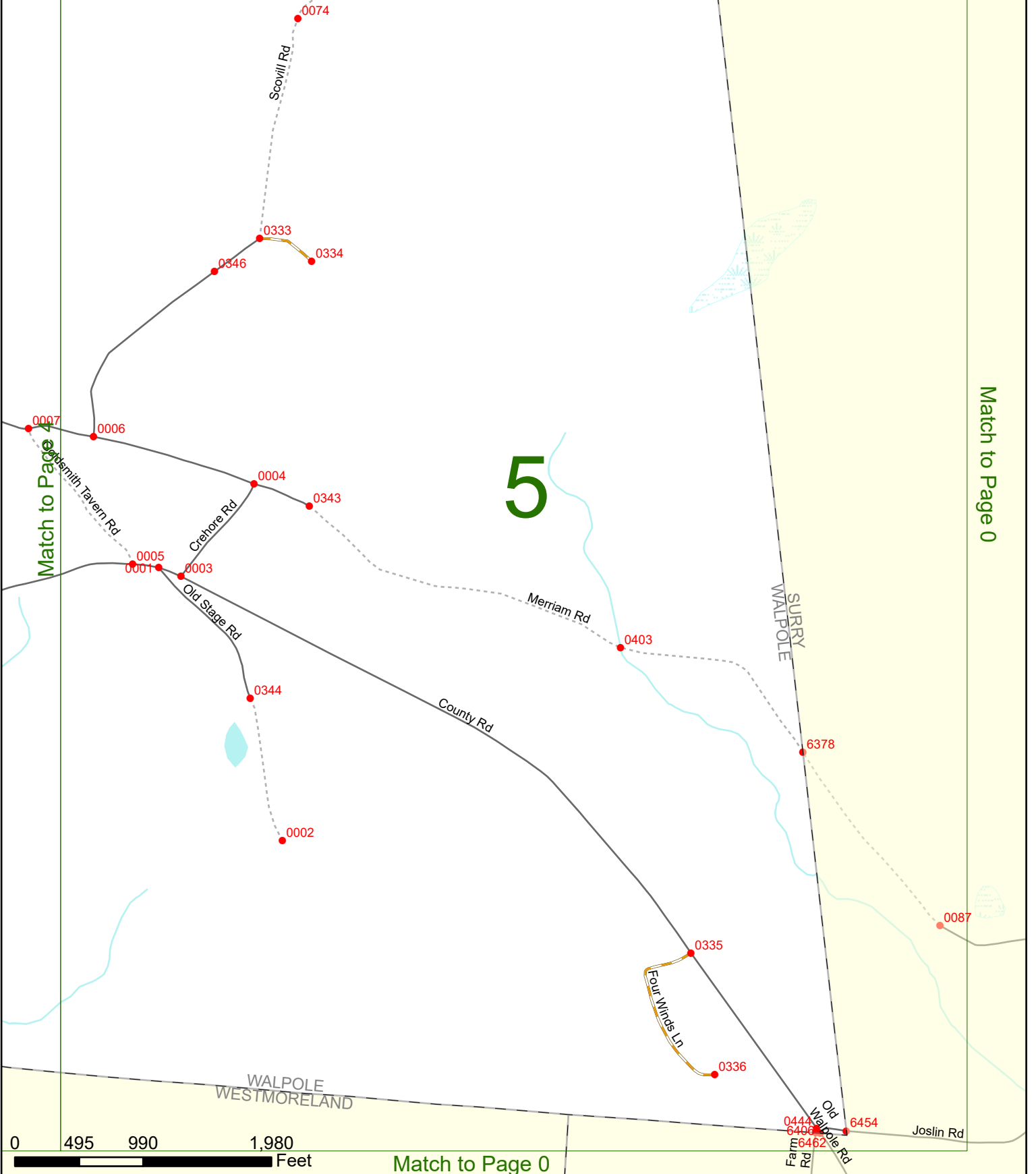
Match to Page 0

# WALPOLE

Match to Page 10

# 5

Match to Page 0



0 495 990 1,980 Feet

Match to Page 0



# WALPOLE

Match to Page 0

Match to Page 0

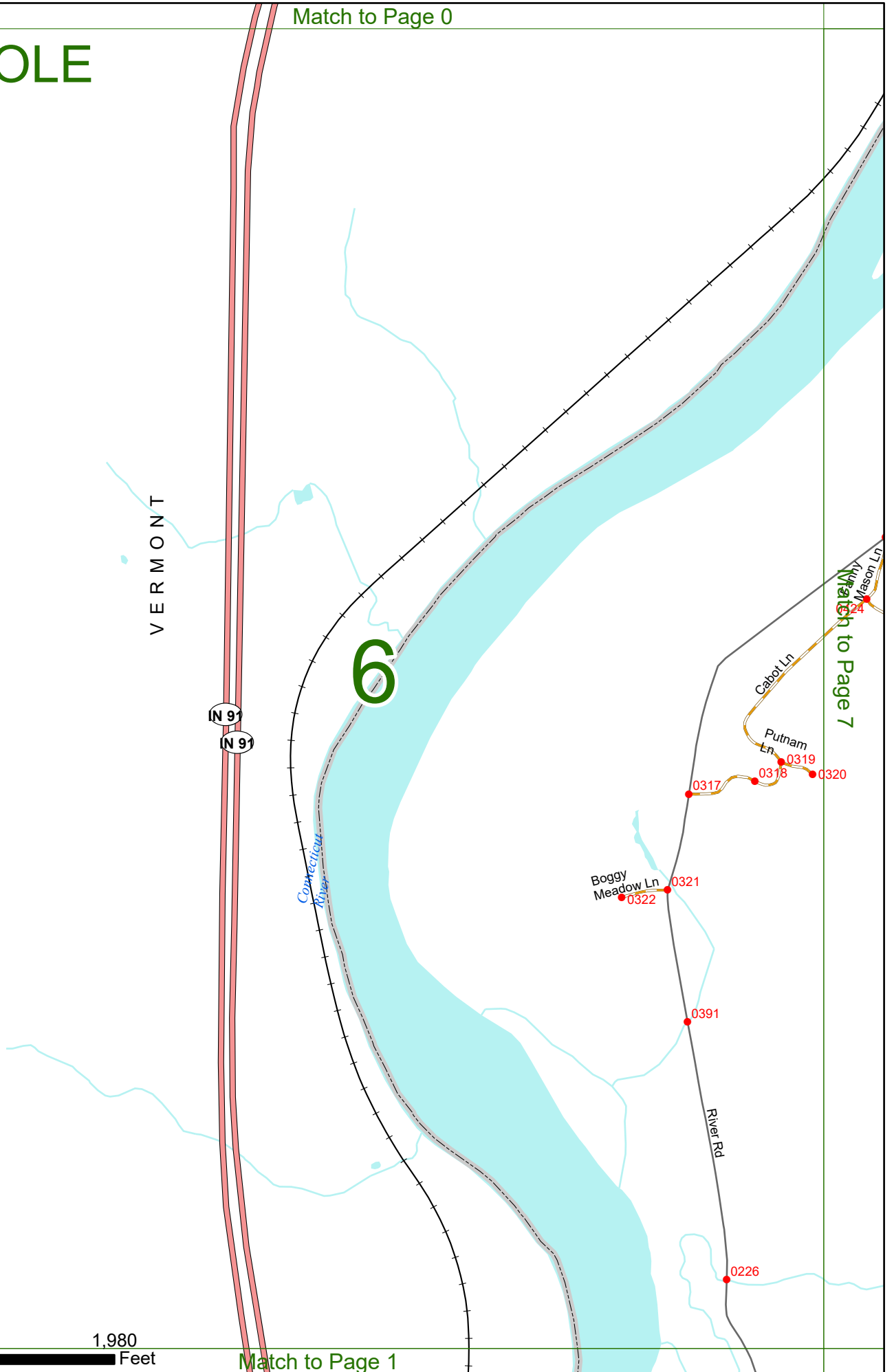
VERMONT

# 6

Match to Page 7

0 495 990 1,980 Feet

Match to Page 1



# WALPOLE

Match to Page 11

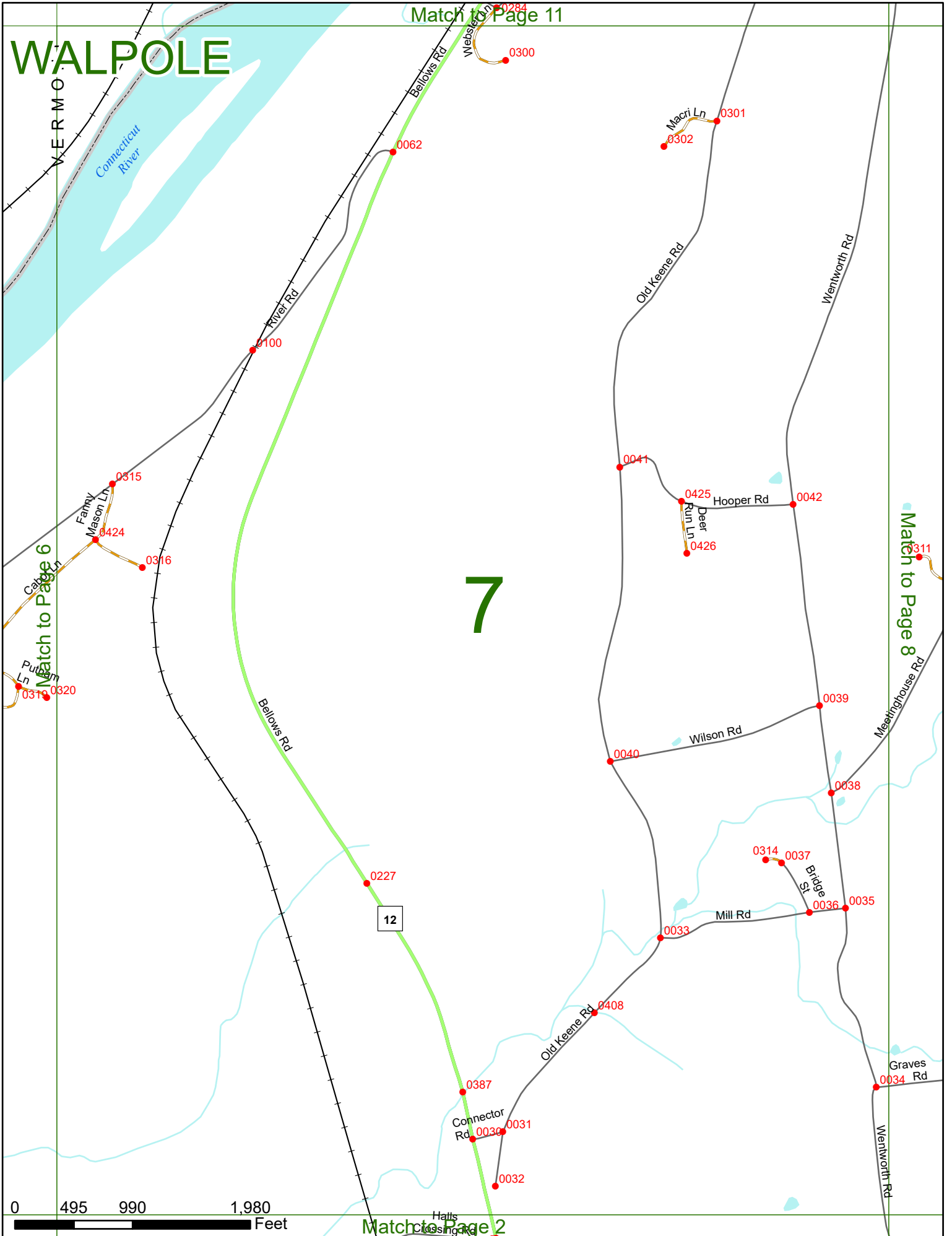
# 7

Match to Page 6

Match to Page 8

Match to Page 2

0 495 990 1,980 Feet





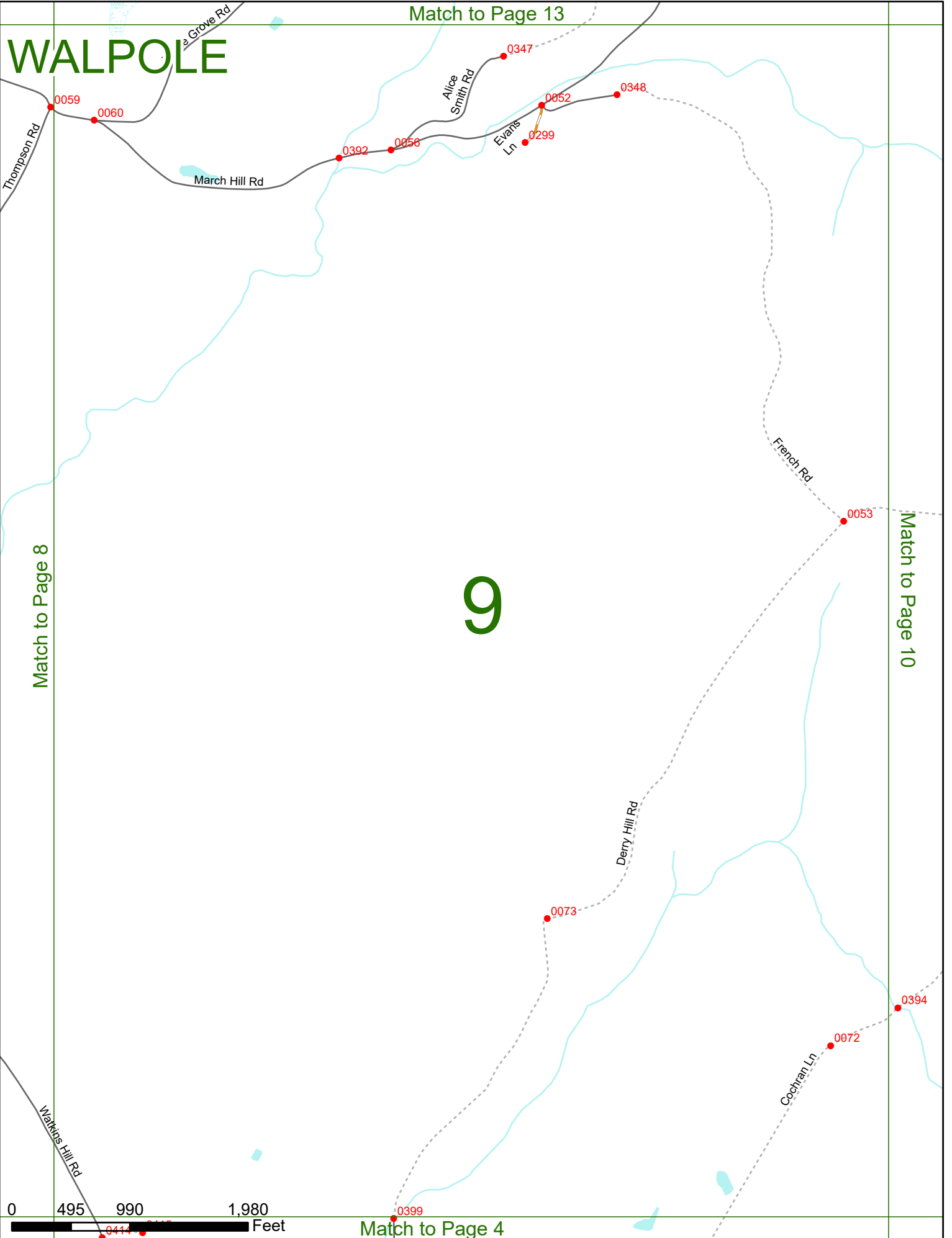
# WALPOLE

Match to Page 13

# 9

Match to Page 8

Match to Page 10



Match to Page 4

Match to Page 14

# WALPOLE

0002

ALSTEAD  
WALPOLE

Proctor Rd

ALSTEAD  
SURRY 6027

Derry Hill Rd

# 10

Match to Page 0

French  
Rd  
0053

0054

6385

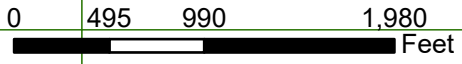
Match to Page 9

Codran Ln

SURRY  
WALPOLE

Scovill Rd

0394



Match to Page 5

# WALPOLE

Match to Page 15

N 91  
N 91

Match to Page 0

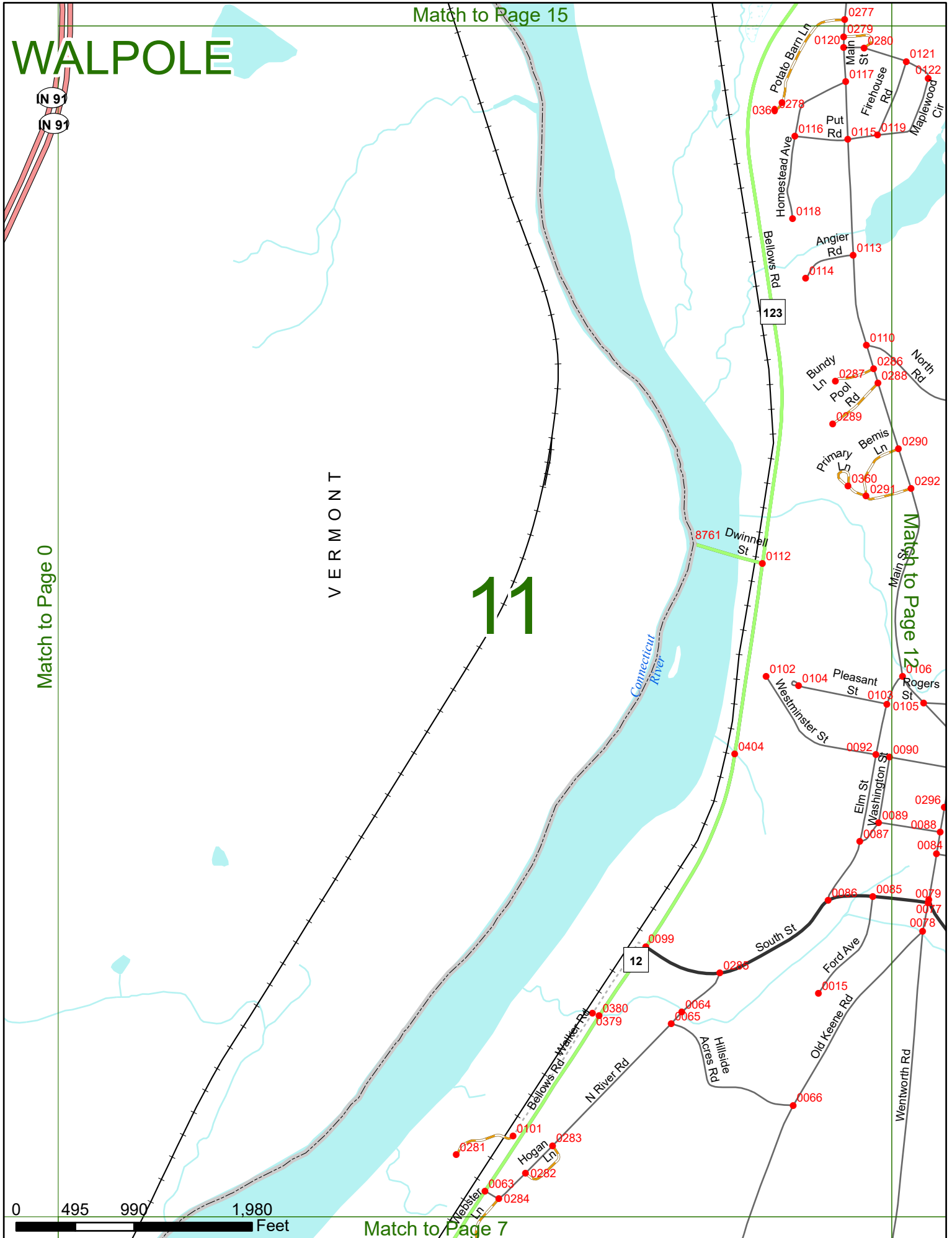
VERMONT

# 11

Match to Page 12

0 495 990 1,980 Feet

Match to Page 7





# WALPOLE

Match to Page 17

# 13

Match to Page 12

Match to Page 14

Match to Page 9

Reservoir Rd

Ramsay Hill Rd

Woodshed Rd

Valley Rd

Ramsay Hill Rd

Eaton Rd

Maple Grove Rd

March Hill Rd

Barnett Hill Rd

Alice Smith Rd

0128

0435

0133

0258

0129

0351

0131

0229

0349

0058

0057





Match to Page 18

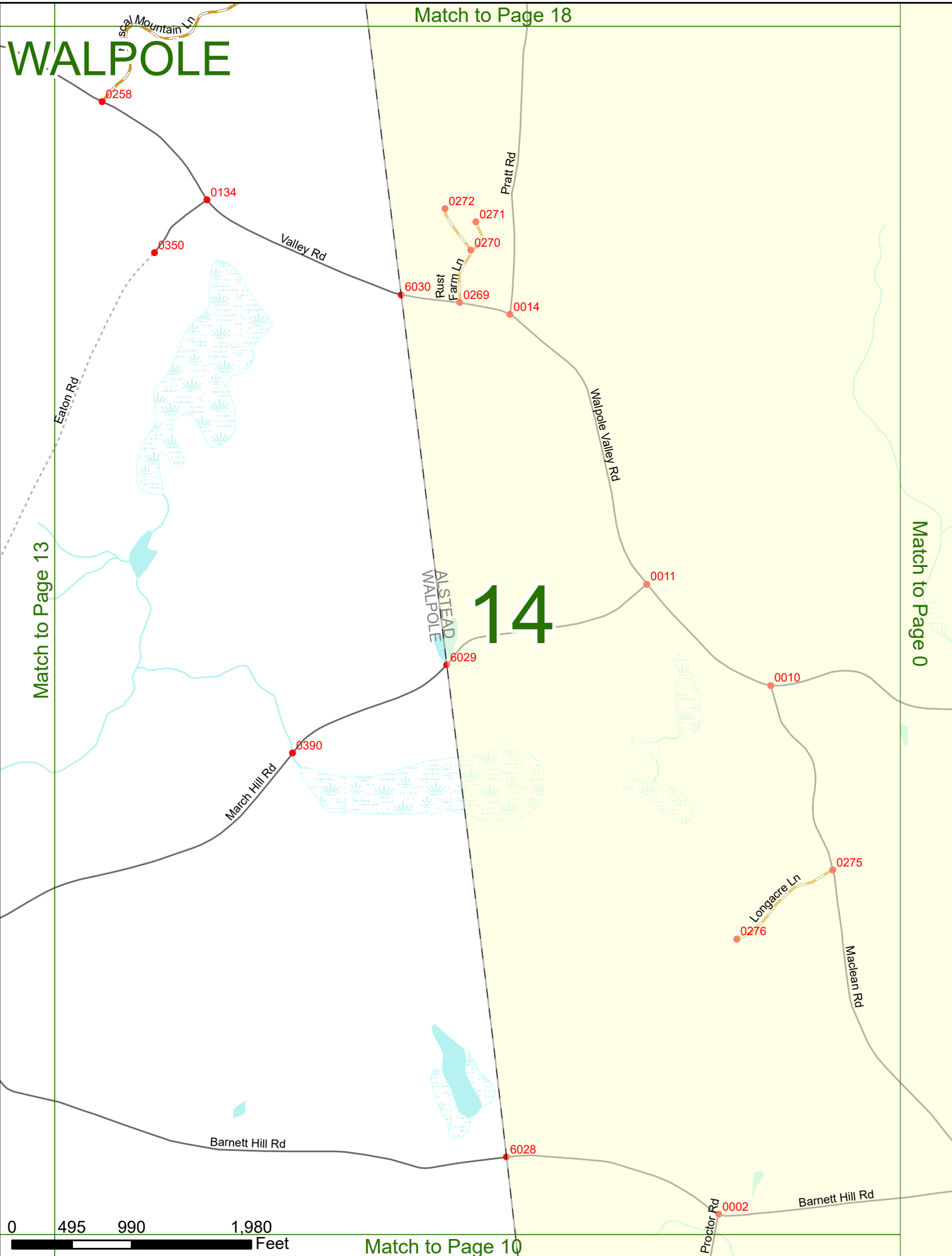
# WALPOLE

# 14

ALSTEAD  
WALPOLE

Match to Page 13

Match to Page 0



Match to Page 10

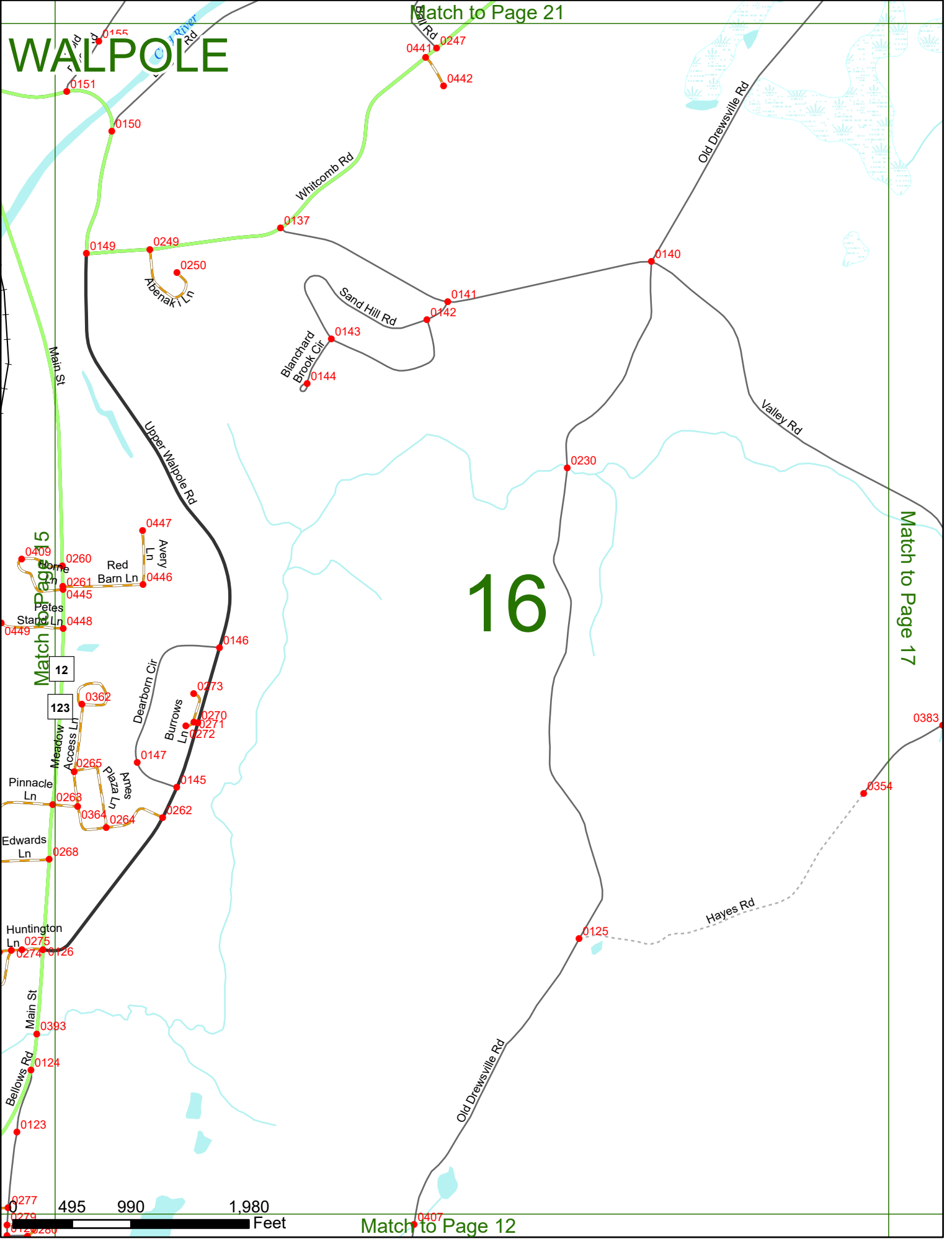


# WALPOLE

Match to Page 21

# 16

Match to Page 17



495 990 1,980 Feet

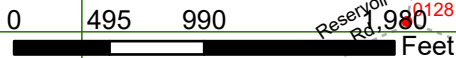
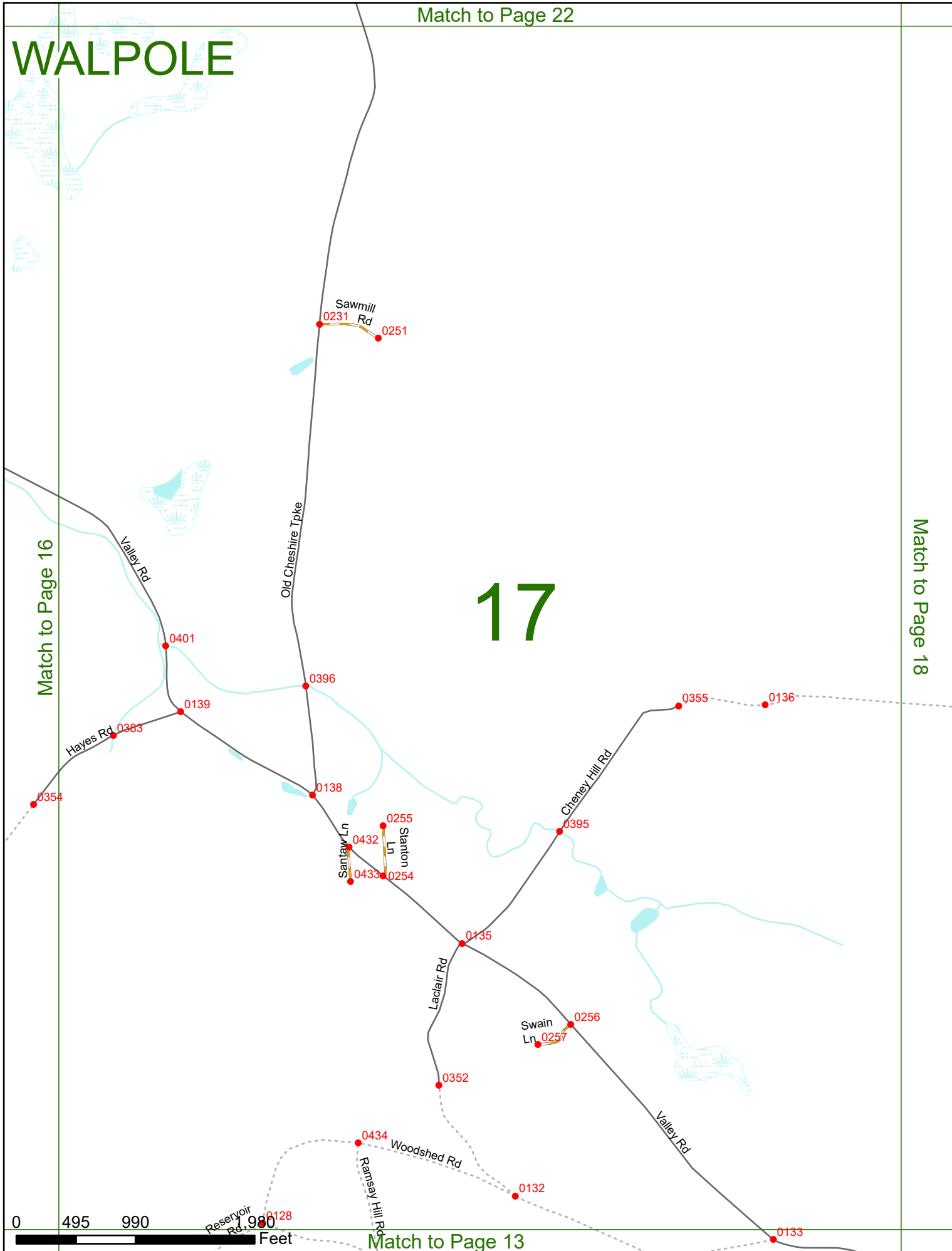
Match to Page 12

# WALPOLE

# 17

Match to Page 16

Match to Page 18



Match to Page 13

Match to Page 23

# WALPOLE

# 18

Match to Page 17

Match to Page 0

Homestead Rd

Bennett Rd

ALSTEAD  
WALPOLE

Cheney Hill Rd

Pratt Rd

Homestead Rd

Carter Ln

Burr Way

Longhouse Way

Rascal Mountain Ln



Match to Page 14

0267

0377

0041

0373

0391

0040

6453

0388

0367

0039

0277 0278

0259

0279

0358

0359

0349

0348

0038

0280

Match to Page 0

WALPOLE

Albees Cove

Connecticut River

Duffy St  
0221  
0233

VERMONT  
19

Match to Page 0

Match to Page 20

IN 91

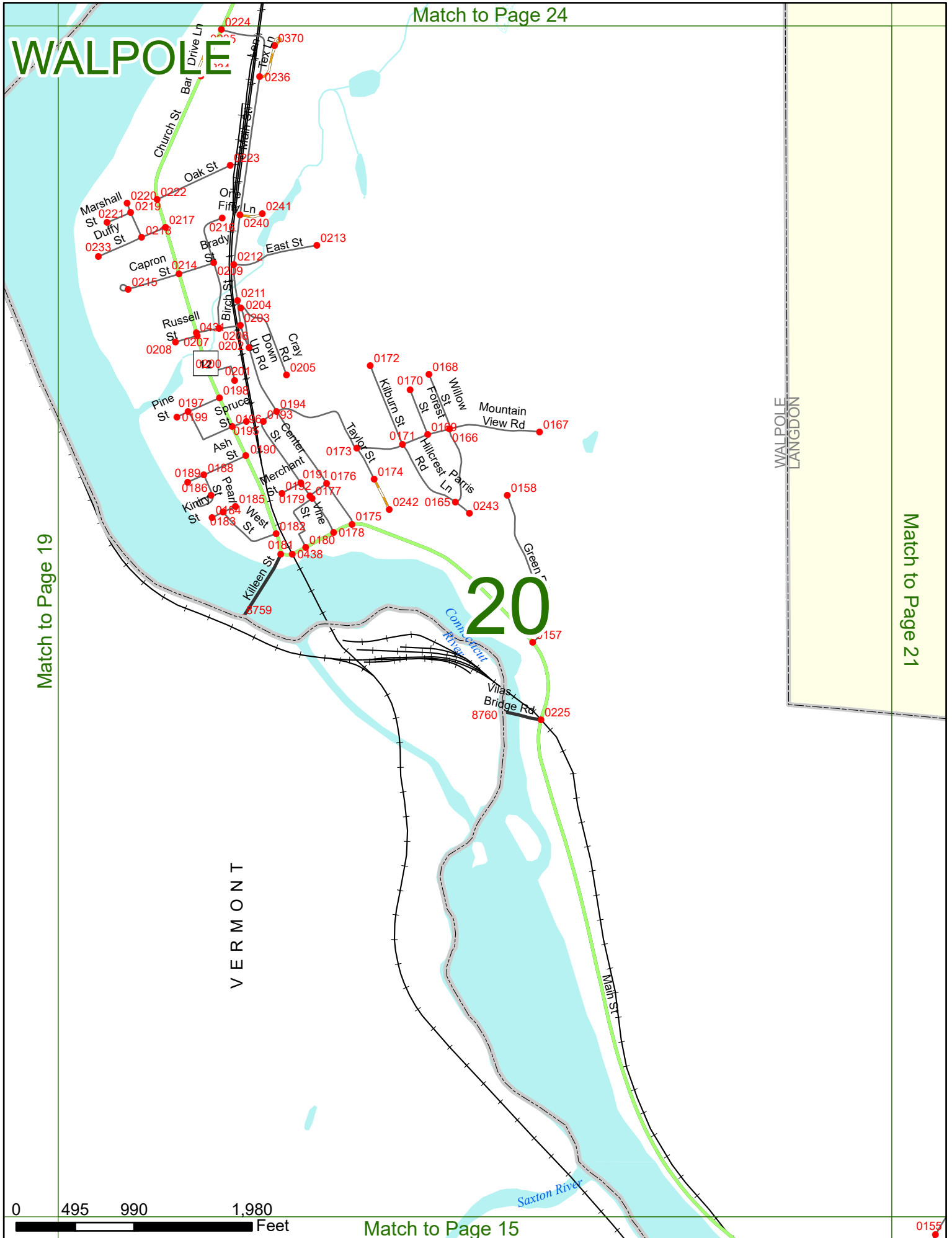
IN 91

0 495 990 1,980 Feet

Match to Page 0

Match to Page 24

# WALPOLE



Match to Page 19

Match to Page 21

# 20

0 495 990 1,980  
 Feet

Match to Page 15

0155

Match to Page 0

# WALPOLE

# 21

Match to Page 20

Match to Page 22

LANGDON  
WALPOLE

Cold River Rd 0006

0507

8410

0443

0156

0372

0245

0152

0244

123

Whitcomb Rd

Old Drewsville Rd

Brewery Rd

Ball Rd 0248

0386



0155

Match to Page 16

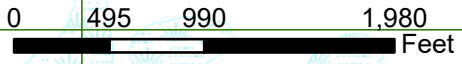
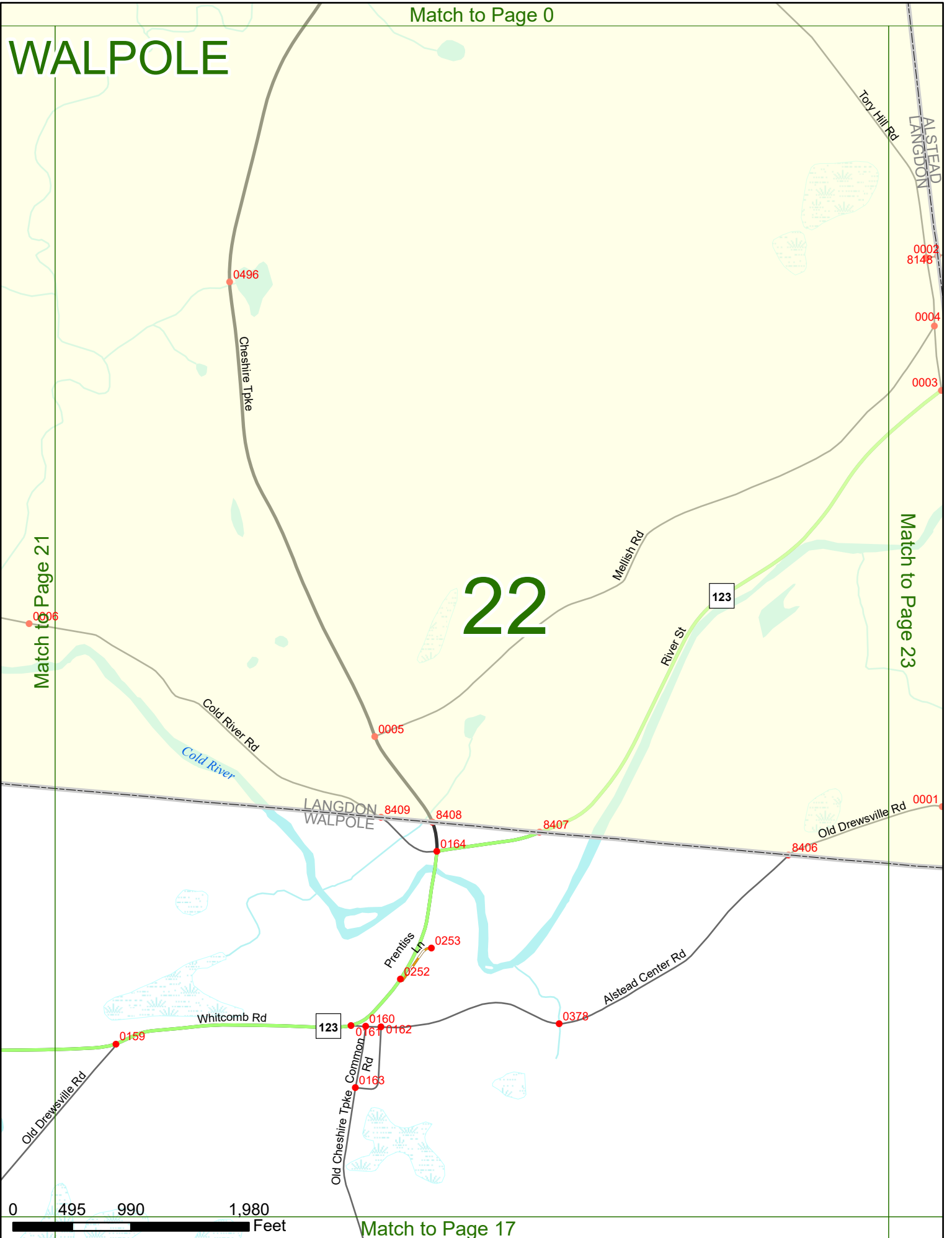


# WALPOLE

# 22

Match to Page 21

Match to Page 23





# WALPOLE

Match to Page 0

Match to Page 0

Match to Page 0

Match to Page 20

