

New Hampshire  
**DOT**  
 Department of Transportation

Maps and data sets are not guaranteed to be free from errors and omissions. Data is in a constant state of update and correction by various groups and agencies. Information displayed on this map is the best available at the time of publication.

# 2023 Nodal Reference Bookmap

## LEGEND



NHDOT will accept crash locations based on the State of NH Uniform Police Traffic Accident Report.

Crash occurred on:

**Option 1**     Street Address  
                   123 Main Street

**Option 2**     Route No and/or     Distance from             NESW             Intesecting Road, Bridge,  
                   Street name             Intersecting Street                                     Town/County line  
                   Main Street                     500                     E                     Oak Street

**Option 3**     First Node                     Distance from First Node                     Second Node  
                   515                                     212                                     632

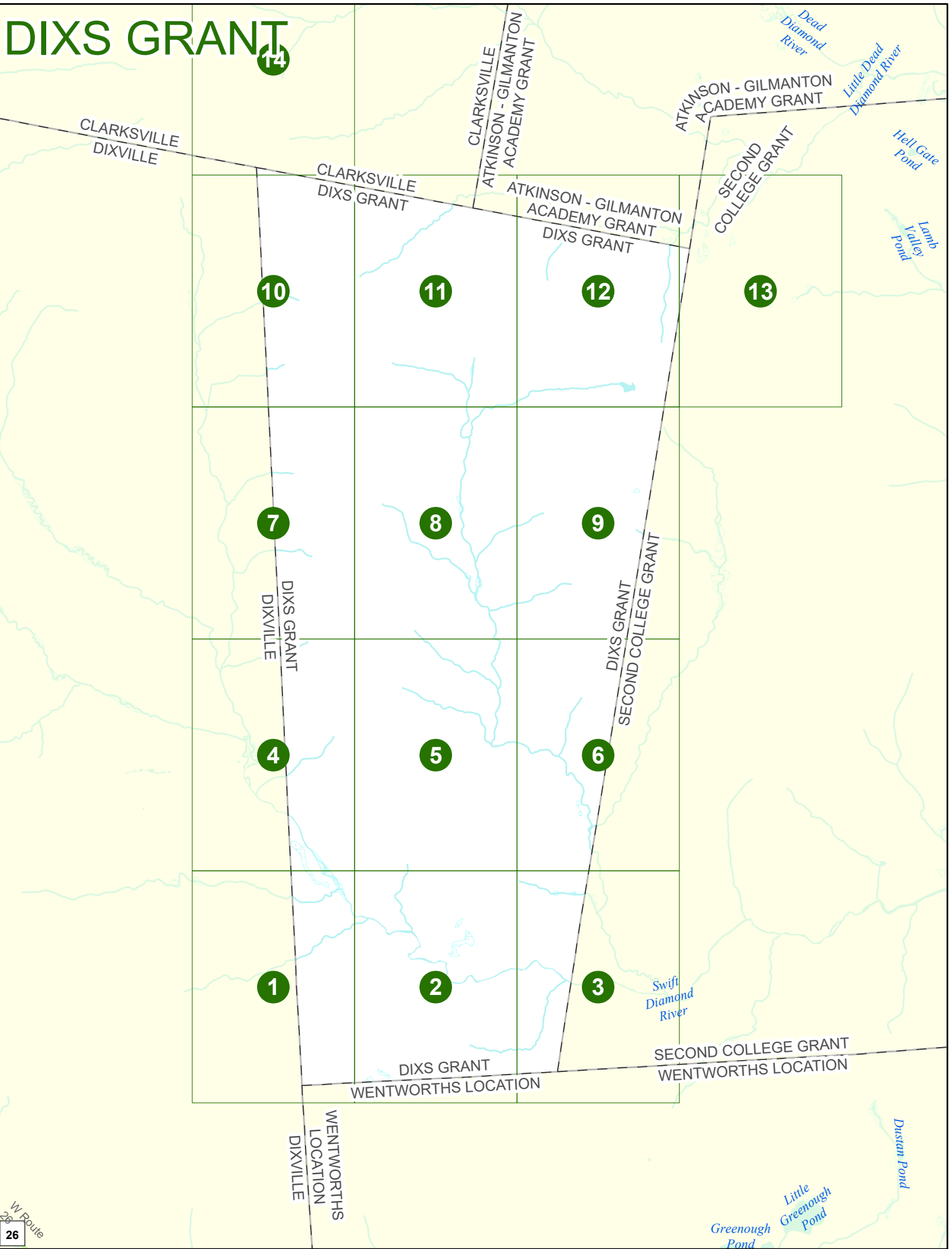
**Option 4**     Route No and/or             Mile Marker on Interstate Only             NESW             Mile (Marker)  
                   Street name  
                   189S                                     700 feet                                     S                     36.8

**Option 3 – Example**

Street Name                     Loudon Road  
First Node                             803  
Distance from First Node             318 Ft  
Second Node                             813



# DIXS GRANT



Match to Page 4

# DIXS GRANT

Swift  
Diamond  
River

Match to Page 0

Match to Page 2

# 1

DIXS GRANT  
DIXVILLE

WENTWORTHS  
LOCATION  
DIXVILLE

DIXS GRANT  
WENTWORTHS LOCATION

0 495 990 1,980 Feet

Match to Page 0

Match to Page 5

# DIXS GRANT

Match to Page 1

Match to Page 3

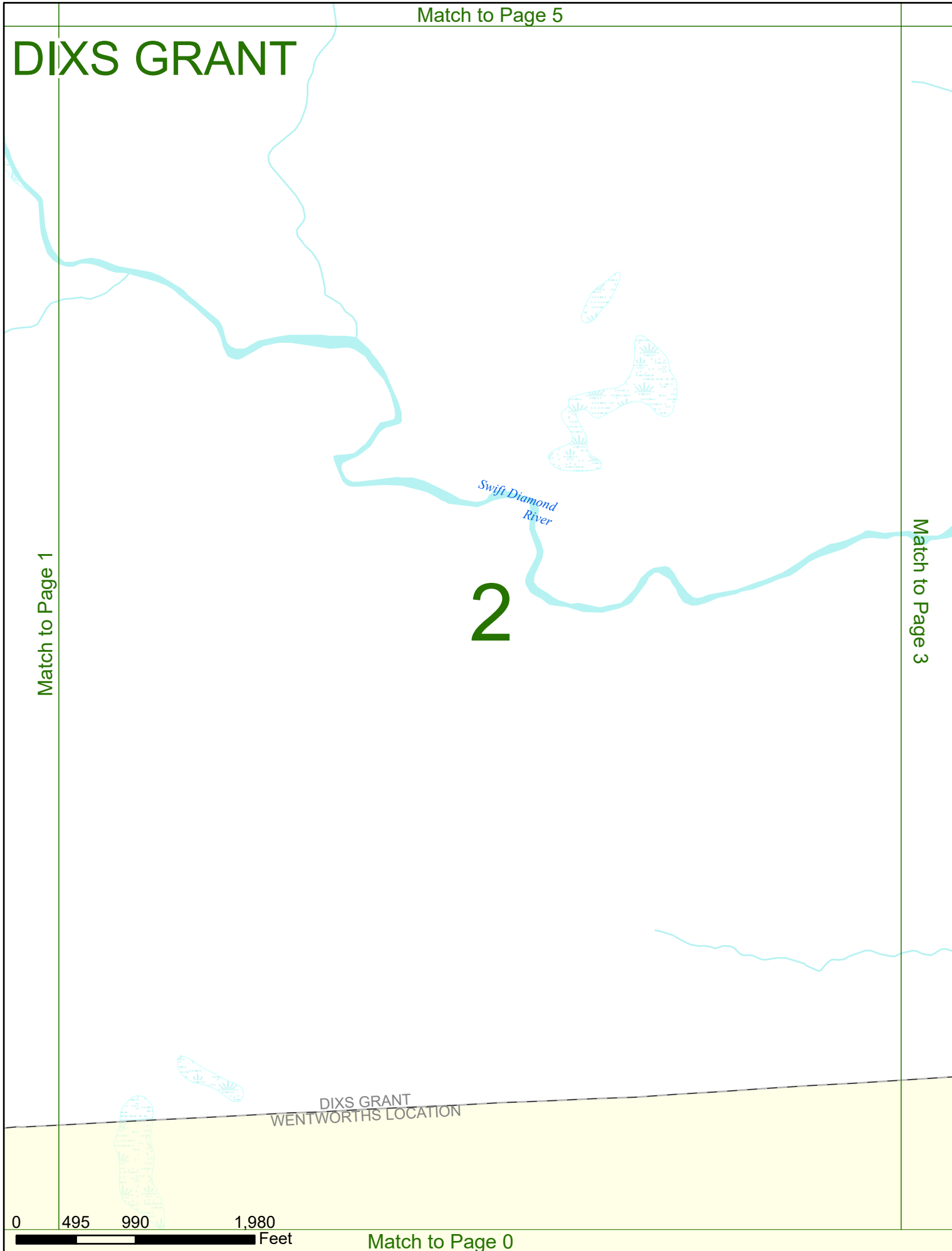
# 2

*Swift Diamond River*

DIXS GRANT  
WENTWORTHS LOCATION

0 495 990 1,980 Feet

Match to Page 0



Match to Page 6

# DIXS GRANT

Match to Page 2

Match to Page 0

*Swift  
Diamond  
River*

# 3

DIXS GRANT  
SECOND COLLEGE GRANT

DIXS GRANT  
WENTWORTHS LOCATION

SECOND COLLEGE GRANT  
WENTWORTHS LOCATION

0 495 990 1,980 Feet

Match to Page 0

Match to Page 7

# DIXS GRANT

Match to Page 0

# 4

DIXS GRANT  
DIXVILLE

Match to Page 5

Swift  
Diamond  
River

0 495 990 1,980 Feet

Match to Page 1

Match to Page 8

# DIXS GRANT

Match to Page 4

Match to Page 6

5

0 495 990 1,980 Feet

Match to Page 2



Match to Page 9

# DIXS GRANT

Match to Page 5

# 6

DIXS GRANT  
SECOND COLLEGE GRANT

Match to Page 0

0 495 990 1,980 Feet

Match to Page 3

Match to Page 10

# DIXS GRANT

Match to Page 0

DIXS GRANT  
DIXVILLE  
**7**

Match to Page 8

0 495 990 1,980 Feet

Match to Page 4

Match to Page 11

# DIXS GRANT

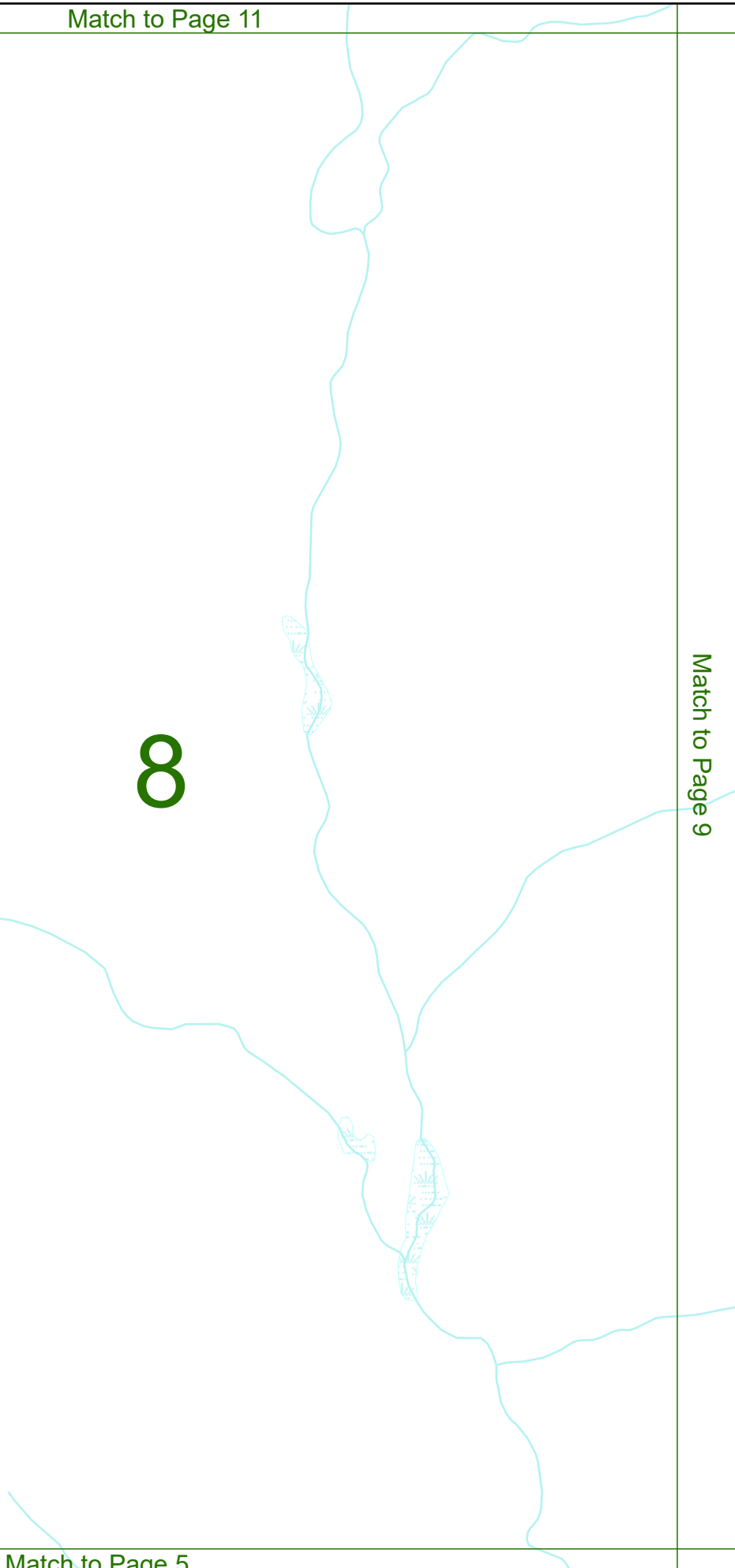
Match to Page 7

Match to Page 9

8

0 495 990 1,980 Feet

Match to Page 5



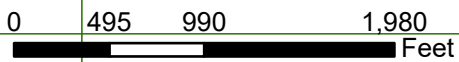
# DIXS GRANT

9

Match to Page 8

Match to Page 0

DIXS GRANT  
SECOND COLLEGE GRANT



Match to Page 6

# DIXS GRANT

Match to Page 14

CLARKSVILLE  
DIXS GRANT

Match to Page 0

DIXS GRANT  
DIXVILLE

# 10

Match to Page 11

0 495 990 1,980 Feet

Match to Page 7

Match to Page 0

# DIXS GRANT

CLARKSVILLE  
DIXS GRANT

CLARKSVILLE  
ATKINSON - GILMANTON  
ACADEMY GRANT

ATKINSON - GILMANTON  
ACADEMY GRANT  
DIXS GRANT

11

Match to Page 10

Match to Page 12

0 495 990 1,980 Feet

Match to Page 8

# DIXS GRANT

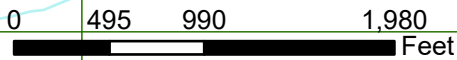
ATKINSON - GILMANTON  
ACADEMY GRANT  
DIXS GRANT

# 12

Match to Page 11

Match to Page 13

DIXS GRANT  
SECOND COLLEGE GRANT



Match to Page 0

# DIXS GRANT

ATKINSON - GILMANTON  
ACADEMY GRANT  
SECOND COLLEGE GRANT

Match to Page 12

DIXS GRANT  
SECOND COLLEGE GRANT

# 13

Match to Page 0

0 495 990 1,980 Feet

Match to Page 0



Match to Page 0

# DIXS GRANT

14

Match to Page 0

Match to Page 0

CLARKSVILLE  
DIXVILLE

0 495 990 1,980 Feet

Match to Page 10

CLARKSVILLE  
DIXS GRANT