

Nh Rt 118
Petelle Dr

White Mountain NF

White Mountain NF

White Mountain NF

White Mountain NF

White Mountain NF

White Mountain NF

ELLSWORTH

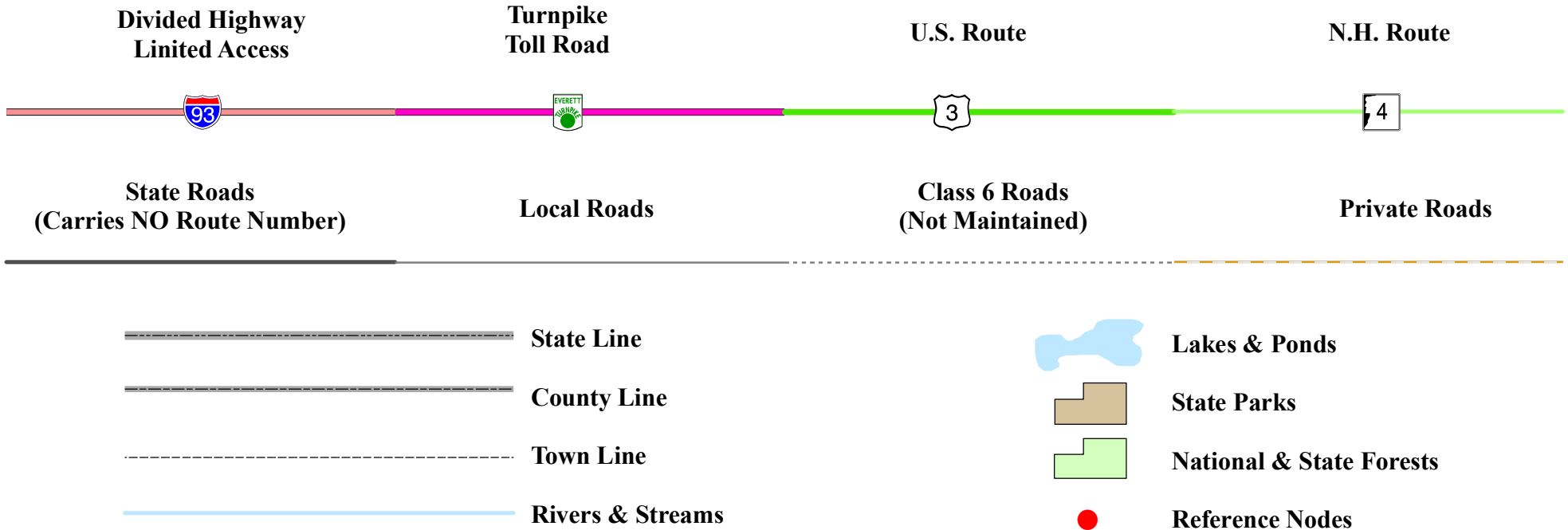


Department of Transportation

Maps and data sets are not guaranteed to be free from errors and omissions. Data is in a constant state of update and correction by various groups and agencies. Information displayed on this map is the best available at the time of publication.

2013 Nodal Reference Bookmap

LEGEND



NHDOT will accept crash locations based on the State of NH Uniform Police Traffic Accident Report.

Crash occurred on:

Option 1 Street Address
 123 Main Street

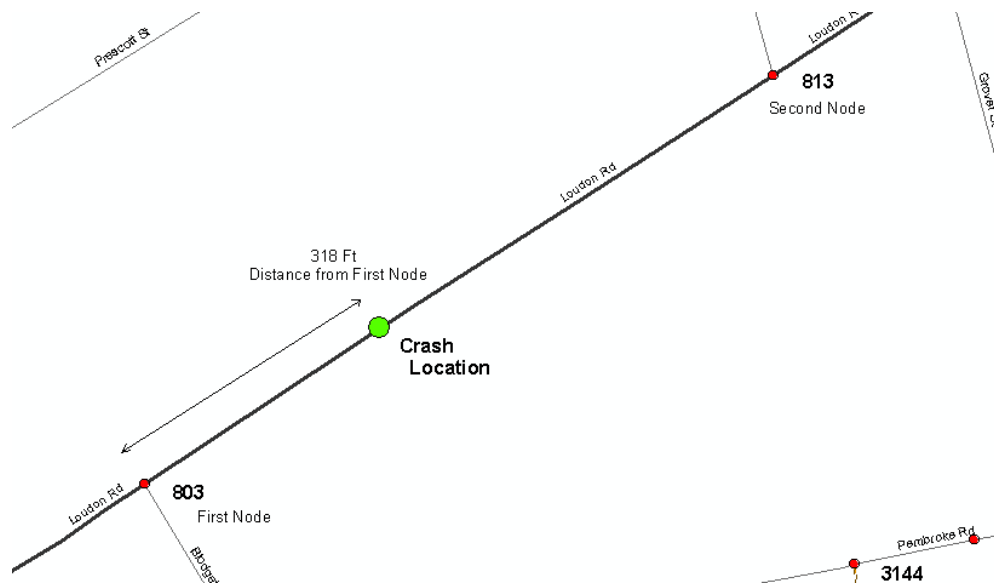
Option 2 Route No and/or Distance from NESW Intesecting Road, Bridge,
 Street name Intersecting Street Town/County line
 Main Street 500 E Oak Street

Option 3 First Node Distance from First Node Second Node
 515 212 632

Option 4 Route No and/or Mile Marker on Interstate Only NESW Mile (Marker)
 Street name
 189S 700 feet S 36.8

Option 3 – Example

Street Name Loudon Road
First Node 803
Distance from First Node 318 Ft
Second Node 813



Match to page 5

ELLSWORTH

White Mountain NF

0061

ELLSWORTH RUMNEY

1

Match to page 2

0 500 1,000 2,000 Feet

White Mountain NF

Dec 4 2012

Match to page 6

ELLSWORTH

White Mountain NF

Batchelder Rd

0002

0005

0004

0067

ELLSWORTH
RUMNEY

CAMPTON
ELLSWORTH

2

Match to page 1

0 500 1,000 2,000 Feet

White Mountain NF

RUMNEY
CAMPTON

Dec 4 2012

Match to page 7

White Mountain NF

WARREN
ELLSWORTH

WENTWORTH
RUMNEY

ELLSWORTH
RUMNEY

3

Match to page 4

0009

Ranchy

6065

6066

Stinson Lake Rd

0089

0 500 1,000 2,000 Feet

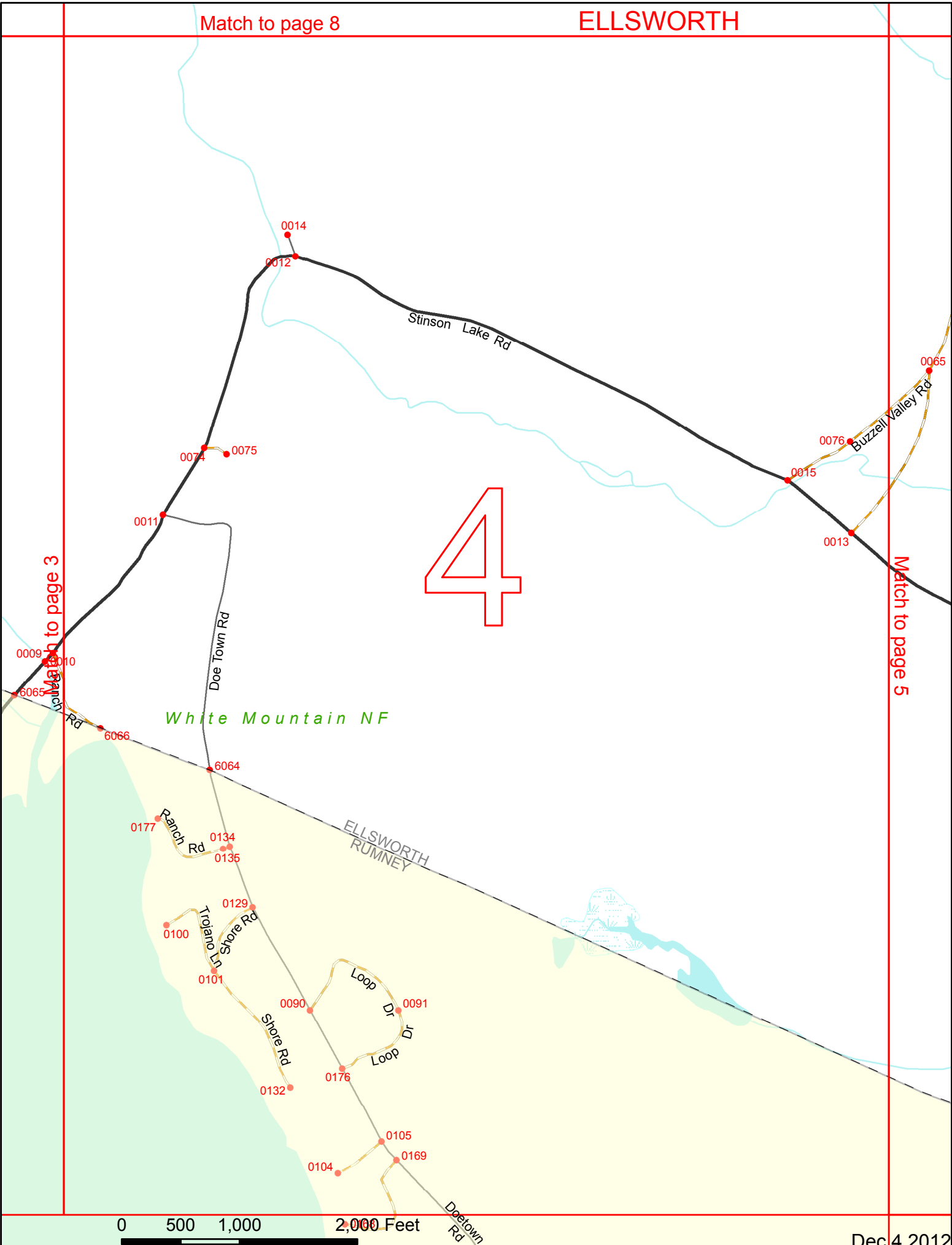
White Mountain NF

0130

4

Match to page 3

Match to page 5



0 500 1,000 2,000 Feet

White Mountain NF

5

Match to page 4

Match to page 6

0066

0065

0076

0013

0016

0064

0077

0020

Stinson Lake Rd

Ellsworth Pond

ELLSWORTH RUMNEY

Arndt Rd

0060

0073

0008
0070

White Mountain NF

Heath Pond

THORNTON
ELLSWORTH

THORNTON
CAMPTON

White Mountain NF

CAMPTON
ELLSWORTH

Loft Cir

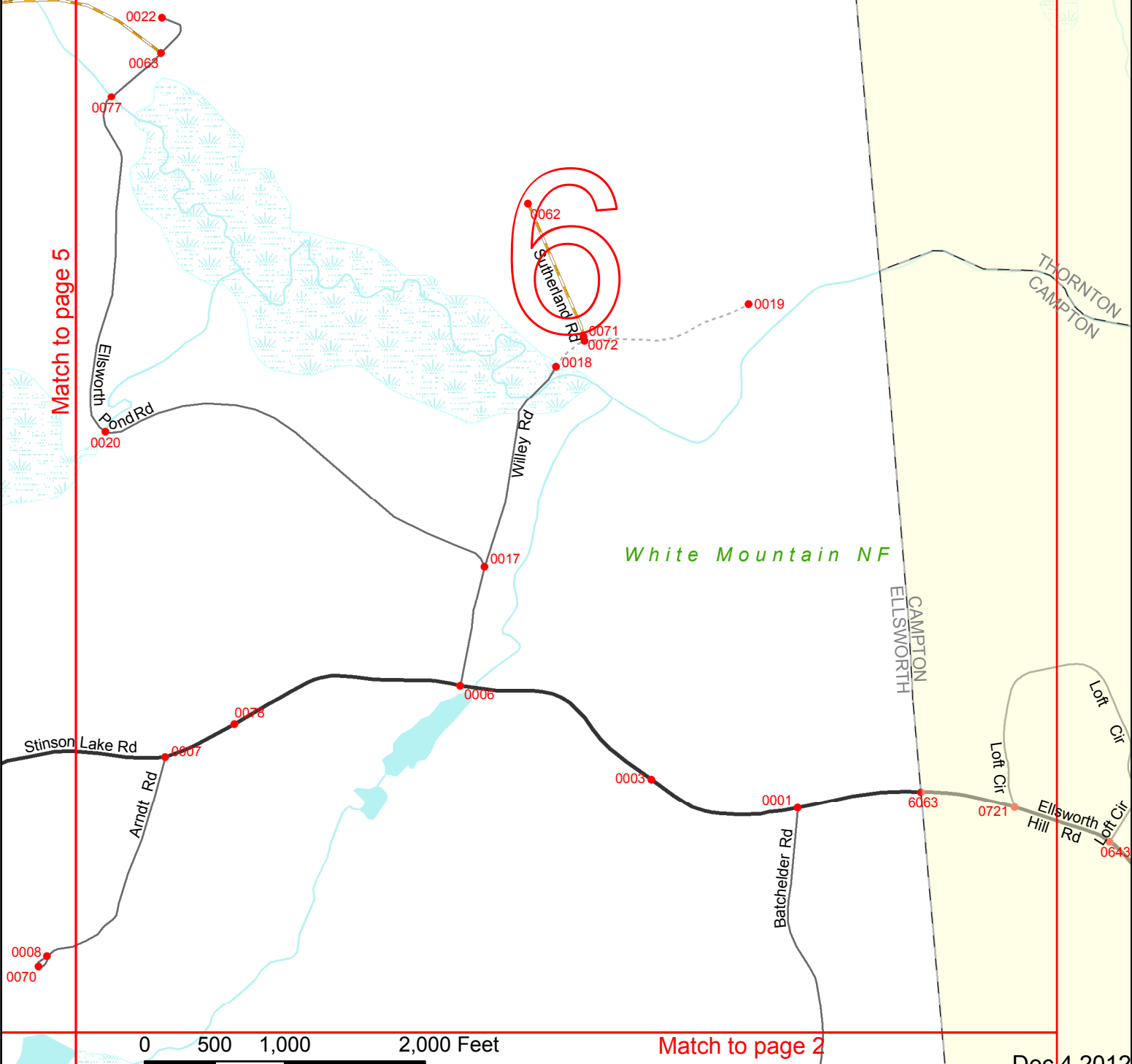
Loft Cir

Ellsworth Hill Rd
Loft Cir

Match to page 5

Match to page 2

0 500 1,000 2,000 Feet



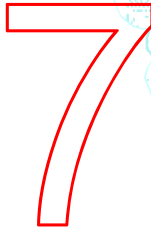
Match to page 11

ELLSWORTH

White Mountain NF

Foxglove Pond

WARREN
ELLSWORTH



Match to page 8

White Mountain NF

0 500 1,000 2,000 Feet

Match to page 3

Dec 4 2012

Match to page 7

Match to page 9

8

White Mountain NF

0 500 1,000 2,000 Feet

Match to page 4

Match to page 8

Match to page 10

9

White Mountain NF

0 500 1,000 2,000 Feet

Match to page 5

Match to page 14

ELLSWORTH

Match to page 9

10

White Mountain NF

THORNTON
ELLSWORTH

Peaked
Hill pond

0 500 1,000 2,000 Feet

Match to page 6

Dec 4 2012

Match to page 15

ELLSWORTH

White
Mountain NF

11

WARREN
ELLSWORTH

Match to page 12

White Mountain NF

0 500 1,000 2,000 Feet

Match to page 7

Dec 4 2012

Match to page 16

ELLSWORTH

WARREN
ELLSWORTH

0017 Hubbard
Brook Rd

6062

0028

0027

WOODSTOCK
ELLSWORTH

White Mountain NF

Gov. Experiment Rd

12

0026

Match to page 13

Match to page 11

0069

0 500 1,000 2,000 Feet

Match to page 8

Dec 4 2012

WOODSTOCK
ELLSWORTH

White Mountain NF

13

Hubbard Brook Experimental Forest Rd

Match to page 12

Match to page 14

Experiment Rd

0025 0068 0024

0023

Hubbard Brook Experimental Forest Rd

0069

0 500 1,000 2,000 Feet

Match to page 9

White Mountain NF

ELLSWORTH

0386

Match to page 13

14

0389

Hubbard Brook Rd

6061

WOODSTOCK
ELLSWORTH

White Mountain NF

WOODSTOCK
THORNTON

THORNTON
ELLSWORTH

0 500 1,000 2,000 Feet

Match to page 10

Dec 4 2012

White Mountain NF

ELLSWORTH

0084

Nh Rt 118

15

Match to page 16

118

Pete's Dr 0213

White Mountain NF

WARREN WOODSTOCK

0 500 1,000 2,000 Feet

Match to page 11

Dec 4 2012

Nh Rt
178

6249

Sawyer Hwy

16

Match to page 15

WARREN
WOODSTOCK

White
Mountain NF

WOODSTOCK
ELLSWORTH

0 500 1,000 2,000 Feet

Match to page 12