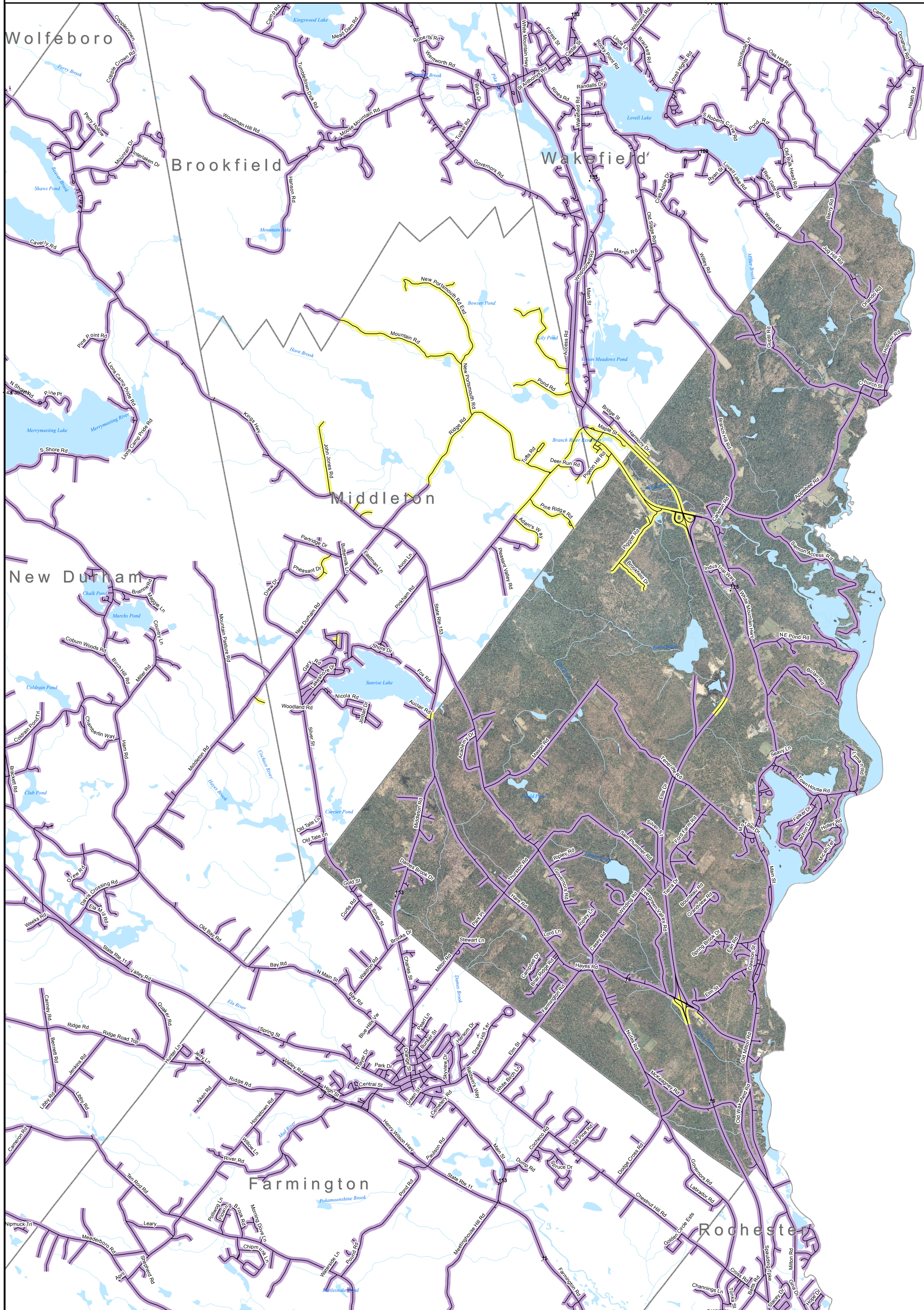


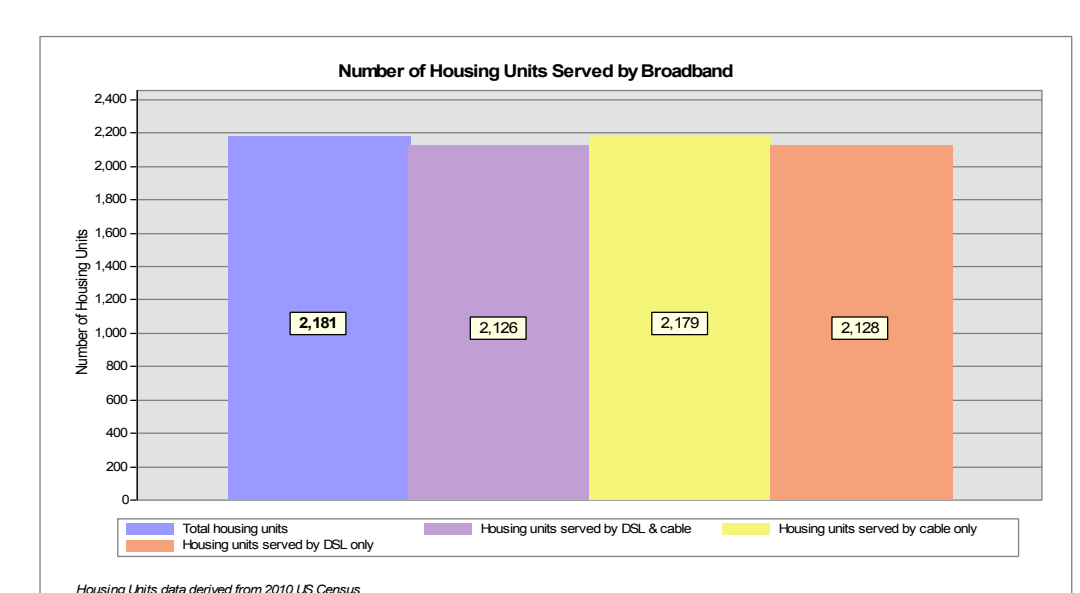
DSL & Cable Broadband Service Availability Town of Milton

MAP REVIEW:		Name:	Email:
Title:		Phone:	Date:
Organization:		Number of changes:	
Comments (please attach separate sheet if needed):			



Map Key
 Purple Roads served by DSL and cable
 Yellow Roads served by cable only
 Orange Roads served by DSL only

This map displays broadband access information submitted to the NH Broadband Mapping & Planning Program (NHBMPP) as of March 31, 2013. The map has been generated for the sole purpose of verifying locations of DSL and cable broadband services in each town in New Hampshire.
 Broadband is defined as access that is at least **768 kbps downstream** and **200 kbps upstream**.
 For more information on this project, please visit the NHBMPP web site at: www.broadbandnh.org



Provider Name	Technology
FairPoint Communications, Inc.	DSL
G4 Communications	DSL
MetroCast	Cable
TIME WARNER CABLE	Cable

Scale: 0 0.2 0.4 0.8 1.2 1.6 Miles

N

Locus Map

NH GRANIT
www.granit.unh.edu

UNIVERSITY of NEW HAMPSHIRE
www.unh.edu