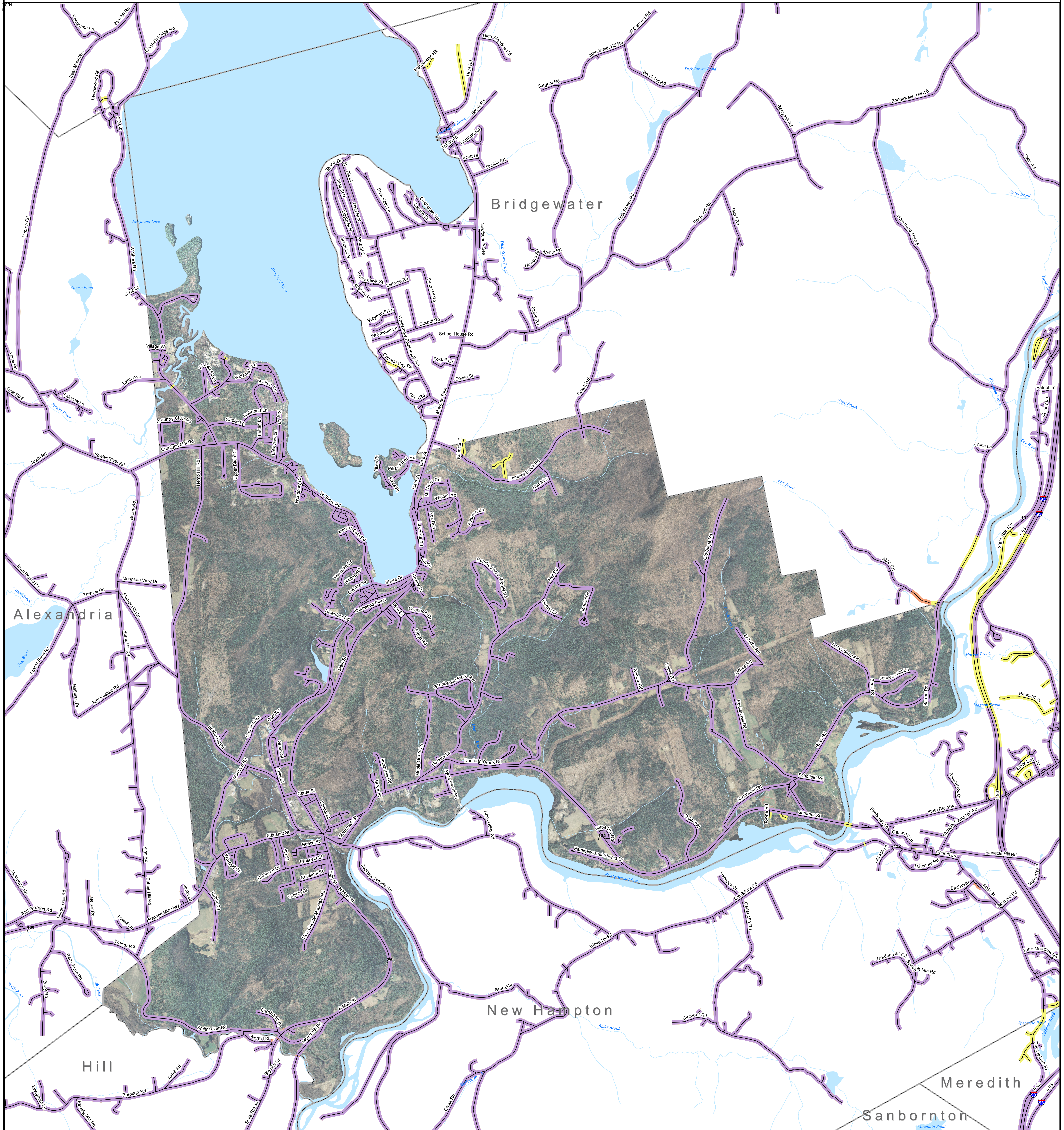


DSL & Cable Broadband Service Availability Town of Bristol

| | | | |
|--------------------|--|--|--|
| MAP REVIEW: | | Email: | |
| Name: | | Phone: | |
| Title: | | Date: | |
| Organization: | | Comments (please attach separate sheet if needed): | |
| Number of changes: | | | |



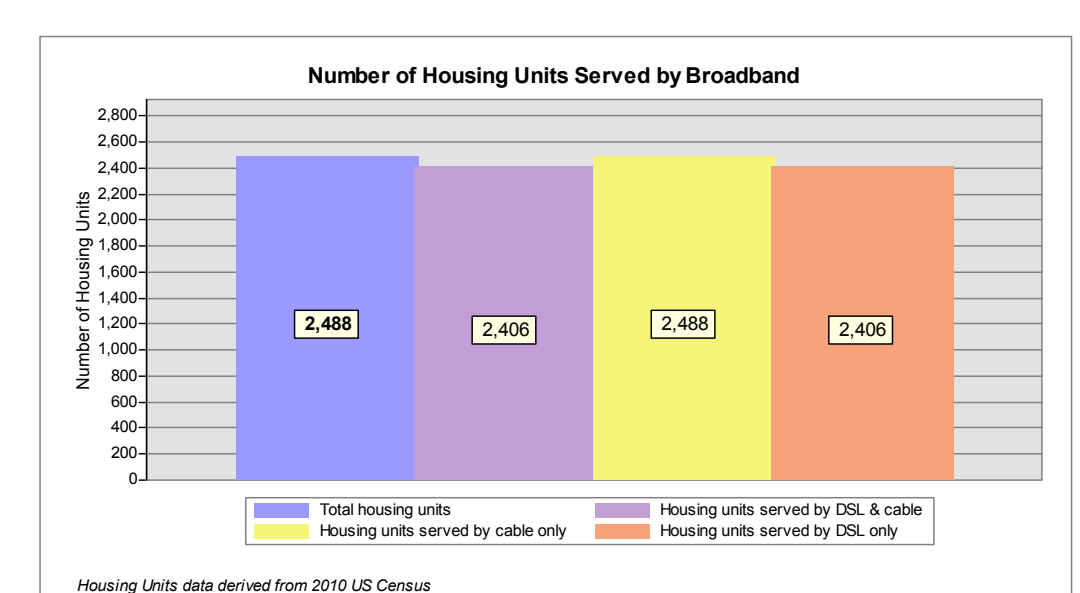
Map Key

- Roads served by DSL and cable
- Roads served by cable only
- Roads served by DSL only

This map displays broadband access information submitted to the NH Broadband Mapping & Planning Program (NHBMP) as of March 31, 2013. The map has been generated for the sole purpose of verifying locations of DSL and cable broadband services in each town in New Hampshire.

Broadband is defined as access that is at least **768 kbps downstream** and **200 kbps upstream**.

For more information on this project, please visit the NHBMP web site at: iwantbroadbandnh.org



| Provider Name | Technology |
|--------------------------------|------------|
| Comcast | Cable |
| FairPoint Communications, Inc. | DSL |
| G4 Communications | DSL |
| MetroCast | Cable |
| TIME WARNER CABLE | Cable |

Locus Map

0 0.125 0.25 0.5 0.75 1 Miles

www.granit.unh.edu

www.unh.edu