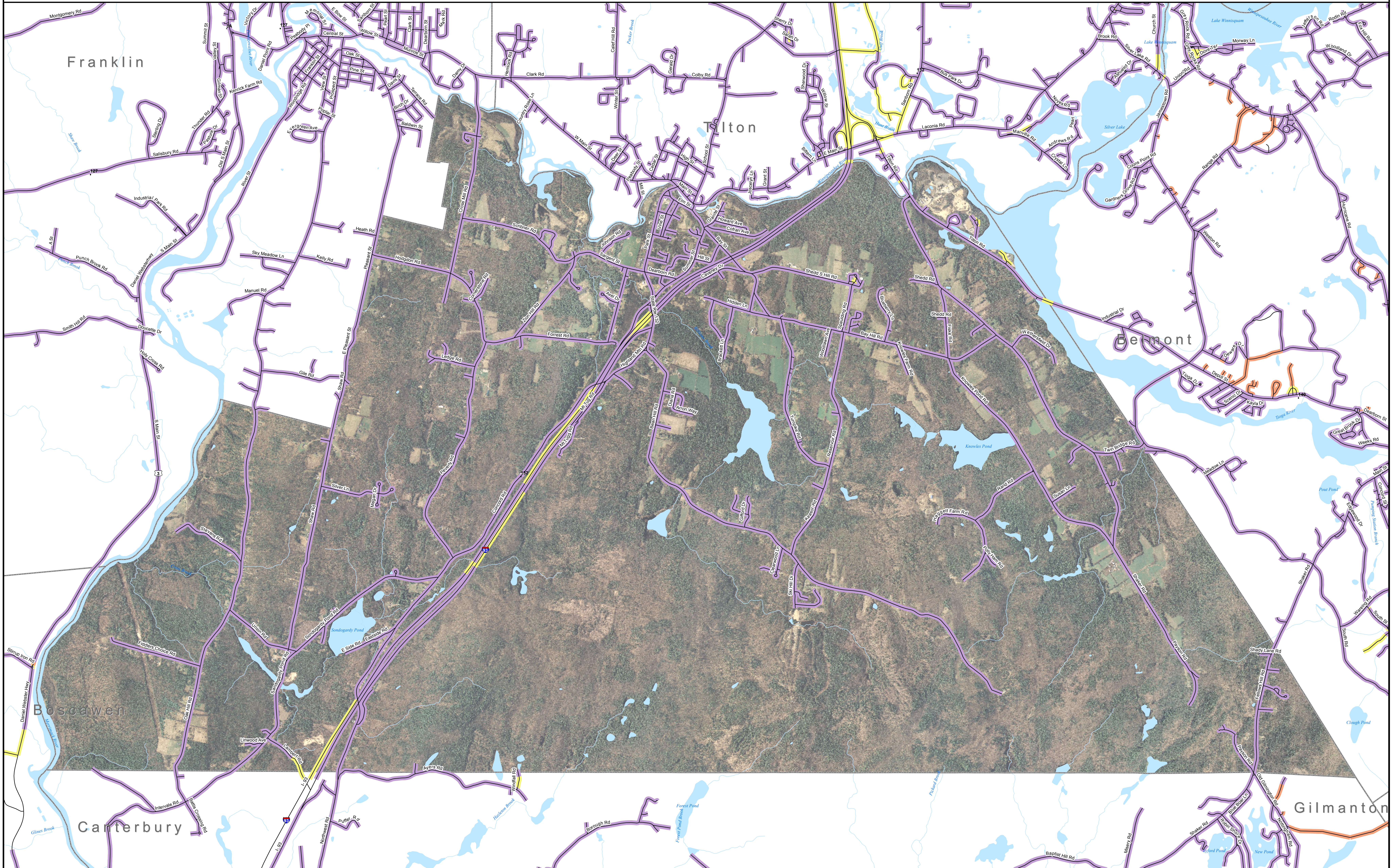


DSL & Cable Broadband Service Availability Town of Northfield

| | | | |
|--|--|--------|--|
| MAP REVIEW: | | Email: | |
| Name: | | Phone: | |
| Title: | | Date: | |
| Organization: | | | |
| Number of changes: | | | |
| Comments (please attach separate sheet if needed): | | | |

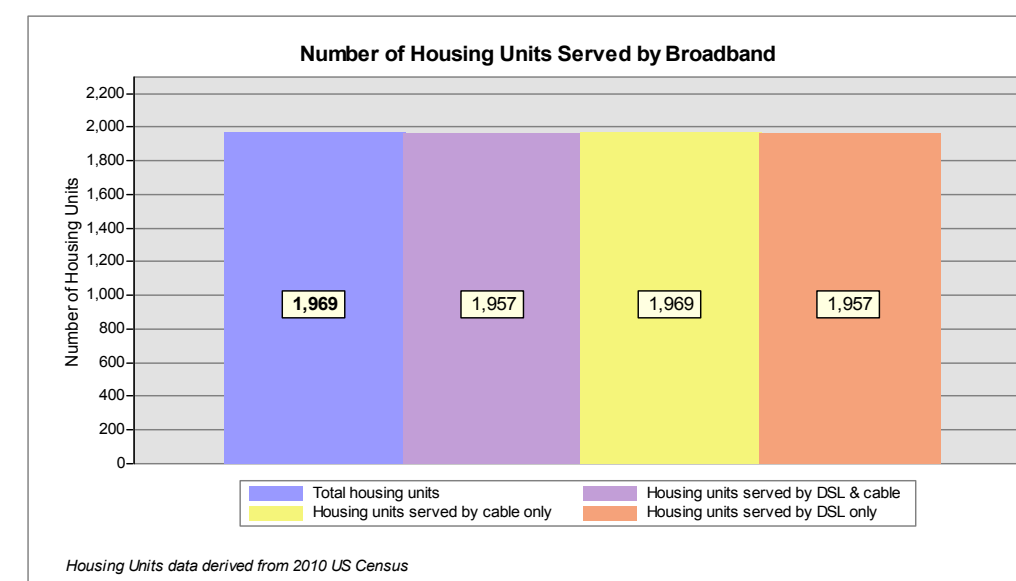


- Map Key**
- Roads served by DSL and cable
 - Roads served by cable only
 - Roads served by DSL only

This map displays broadband access information submitted to the NH Broadband Mapping & Planning Program (NHBMPP) as of March 31, 2013. The map has been generated for the sole purpose of verifying locations of DSL and cable broadband services in each town in New Hampshire.

Broadband is defined as access that is at least **768 kbps downstream** and **200 kbps upstream**.

For more information on this project, please visit the NHBMPP web site at: iwantbroadbandnh.org



Provider Name

FairPoint Communications, Inc.
G4 Communications
Comcast
MetroCast

Technology

DSL
DSL
Cable
Cable

