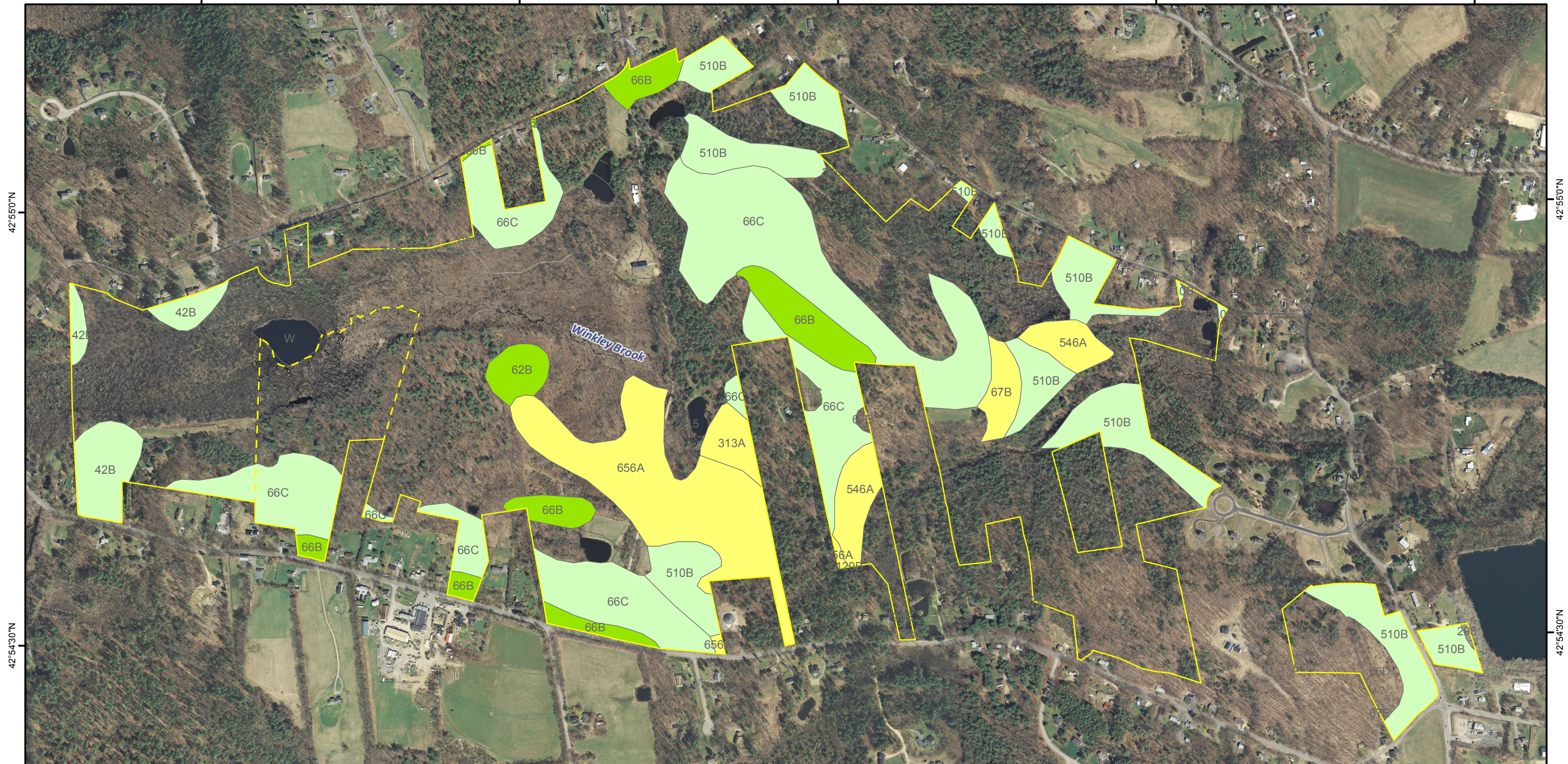


Lewis Family Center Master Plan

AGRICULTURAL SOILS

70°57'30"W 70°57'0"W 70°56'30"W 70°56'0"W 70°55'30"W



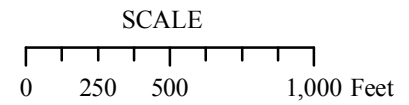
42°55'0"N

42°55'0"N

42°54'30"N

42°54'30"N

70°57'30"W 70°57'0"W 70°56'30"W 70°56'0"W 70°55'30"W



- All areas are prime farmland
- Farmland of local importance
- Farmland of statewide importance
- Not prime farmland
- Property Boundary

Data Source(s):
 Soils - Natural Resources Conservation Service
 Rockingham County Soil Survey

Aerial Photography - 2010, 1 Ft. Resolution

NH
GRANT

NOVEMBER, 2014