





NH Broadband Mapping & Planning Program: Wireline versus Terrestrial Wireless Service Availability

Map Key

-  Wireline service available
-  Terrestrial wireless service available

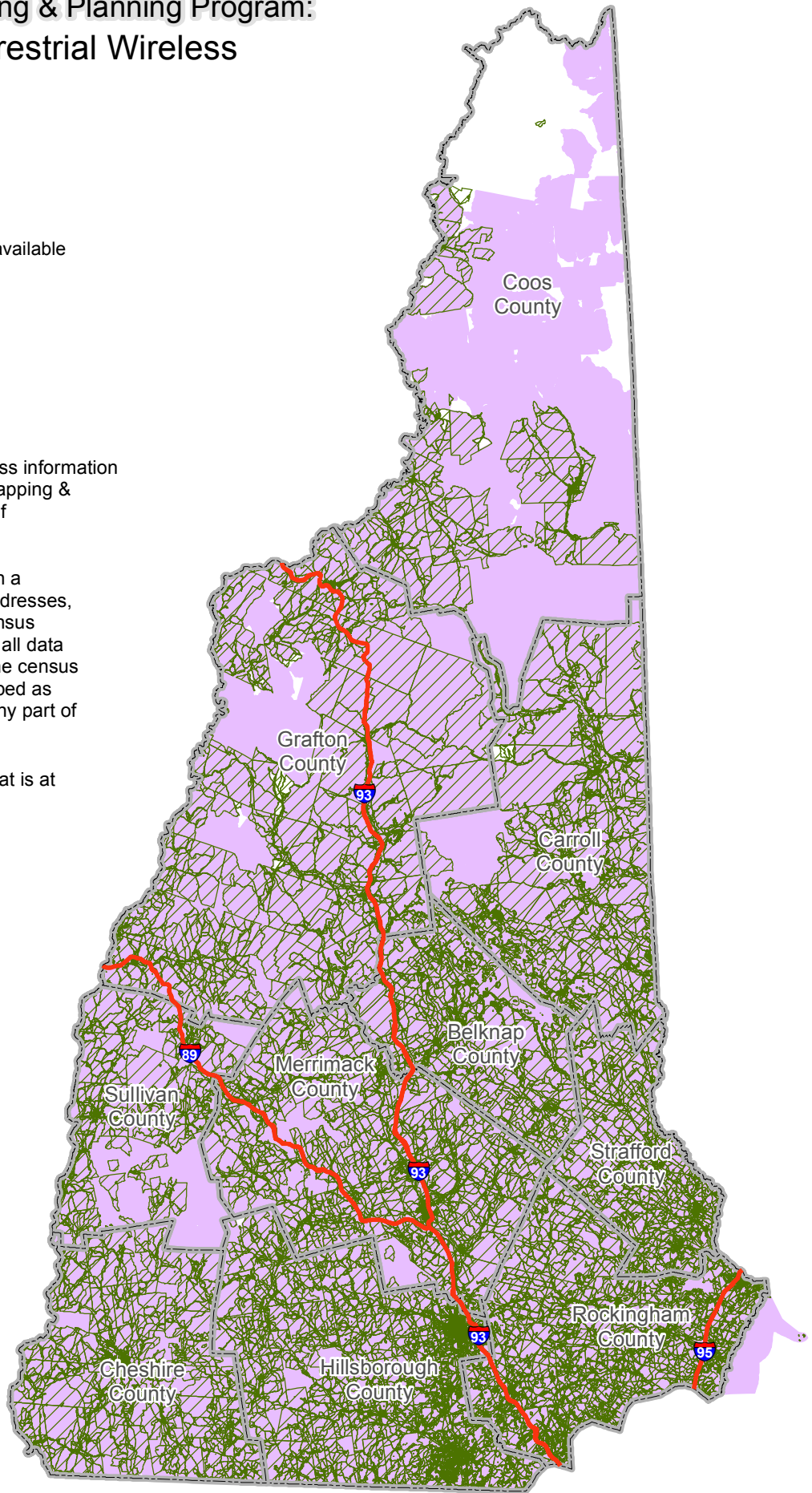
Other Features

-  Interstate
-  County boundary

The map displays broadband access information submitted to the NH Broadband Mapping & Planning Program (NHBMPP) as of September 30, 2010.

Service providers submitted data in a range of geographies, including addresses, road segments, census blocks, census tracts, etc. For mapping purposes, all data are aggregated and displayed at the census block level. A census block is mapped as "served" if service is delivered to any part of the block.

Broadband is defined as access that is at least **768 kbps downstream** and **200 kbps upstream**.



Please visit the NHBMPP web site at: www.wantbroadbandnh.org

